

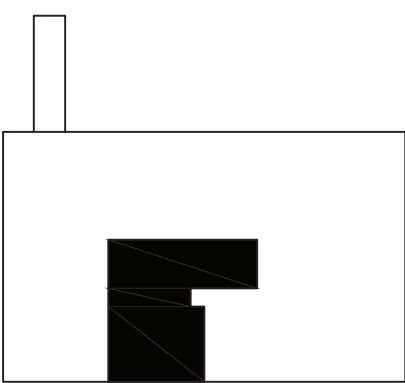
DRAWING NOTES:

- EXISTING WALL MOUNTED AIR COOLED SPLIT UNIT AND CONDENSATE PUMP TO BE REMOVED AND STORED. REMOVE ALL POWER AND CONTROL WIRING. PURGE, CAP, AND SEAL THE REFRIGERANT PIPING. UNIT AND CONDENSATE PUMP TO BE REINSTALLED IN A NEW LOCATION. REFER TO NEW WORK PLANS.
- EXISTING CEILING HUNG HEAT-PUMP UNIT TO BE REMOVED. TURN OVER TO BUILDING MGT OR RE-CLAIM REFRIGERANT AND DISCARD UNIT AS PER BUILDING MANAGEMENT DIRECTION. REMOVE ALL POWER AND CONTROL WIRING.
- EXISTING DUCT UP TO TOILET EXHAUST FAN ON ROOF. CUT AND CAP BRANCH DUCTS AT LOCATION INDICATED AND SEAL REMAINING DUCT. EXISTING FAN TO REMAIN.

GENERAL NOTES

KEY NOTES

KEY PLAN



1 LEVEL 01 DEMOLITION PLAN
SCALE: 1/4" = 1'-0"
0 4 8 FEET

THIS PLAN IS APPROVED ONLY FOR WORK INDICATED ON THE APPLICATION SPECIFICATION SHEET. ALL OTHER MATTERS SHOWN ARE NOT TO BE RELIED UPON, OR TO BE CONSIDERED AS EITHER BEING APPROVED OR IN ACCORDANCE WITH APPLICABLE CODES.

DOB NOW JOB#

155 White Plains Road
Tarrytown, NY 10591

Gensler

1700 Broadway
Suite 400
New York, NY 10019
United States
Tel 212.492.1400
Fax 212.492.1472

LORING

21 Pennsylvania Plaza
New York, NY 10001
United States
Tel 212.563.7400

HARMANGROUP

450 7th Avenue
#1008
New York, NY 10123
United States
Tel 212.433.2326

MER

901 Manchester Avenue
Moyland, PA 19065
United States
Tel 610.565.4607

Date	Description
10.04.21	ISSUE FOR BID
10.12.21	ADDENDUM #1

Seal / Signature

Project Name
INTERVENTIONAL
RADIOLOGY - TARRYTOWN

Project Number
12491.000

Description
MECHANICAL
LEVEL 01
DUCTWORK DEMOLITION PLAN

Scale
AS NOTED

M-102.00

GENERAL NOTES

155 White Plains Road
Tarrytown, NY 10591

Gensler

1700 Broadway
Suite 400
New York, NY 10019
United States
Tel 212.492.1400
Fax 212.492.1472

LORING

21 Pennsylvania Plaza
New York, NY 10001
United States
Tel 212.563.7400

HARMANGROUP

450 7th Avenue
#1008
New York, NY 10123
United States
Tel 212.433.2326

MER

901 Manchester Avenue
Moyland, PA 19065
United States
Tel 610.565.4607

KEY NOTES

DRAWING NOTES:

- 1 EXISTING 3-INCH COPPER CONDENSER WATER SUPPLY AND RETURN PIPING TO BE REMOVED AND REINSTALLED AT A HIGHER ELEVATION TO AVOID CONFLICTS WITH THE NEW IR ROOM CEILING HEIGHT. DRAIN AND REFILL THE SYSTEM AT AS PER BUILDING REQUIREMENTS.
- 2 EXISTING 2-INCH COPPER HOT WATER SUPPLY AND RETURN PIPING TO BE REMOVED AND REINSTALLED AT A HIGHER ELEVATION TO AVOID CONFLICTS WITH NEW IR ROOM CEILING HEIGHT. DRAIN AND REFILL THE SYSTEM AS PER BUILDING REQUIREMENTS.
- 3 EXISTING PERIMETER HOT WATER RADIATION TO BE REMOVED. EXTEND NEW 1-1/2" PIPE UP TO CEILING AND BACK DOWN TO PERIMETER TO MAINTAIN THE LOOP TO ADJACENT SPACES. DRAIN AND REFILL THE SYSTEM AS PER BUILDING REQUIREMENTS.
- 4 EXISTING WALL HUNG AC UNIT TO BE RELOCATED. PURGE AND RECLAIM REFRIGERANT, CUT AND CAP AND CHARGE REFRIGERANT PIPING WITH NITROGEN. PIPING TO BE EXTENDED TO THE NEW UNIT LOCATION. SEE NEW WORK PLAN.

Date	Description
10.04.21	ISSUE FOR BID
10.12.21	ADDENDUM #1

Seal / Signature

Project Name
INTERVENTIONAL
RADIOLOGY - TARRYTOWN

Project Number

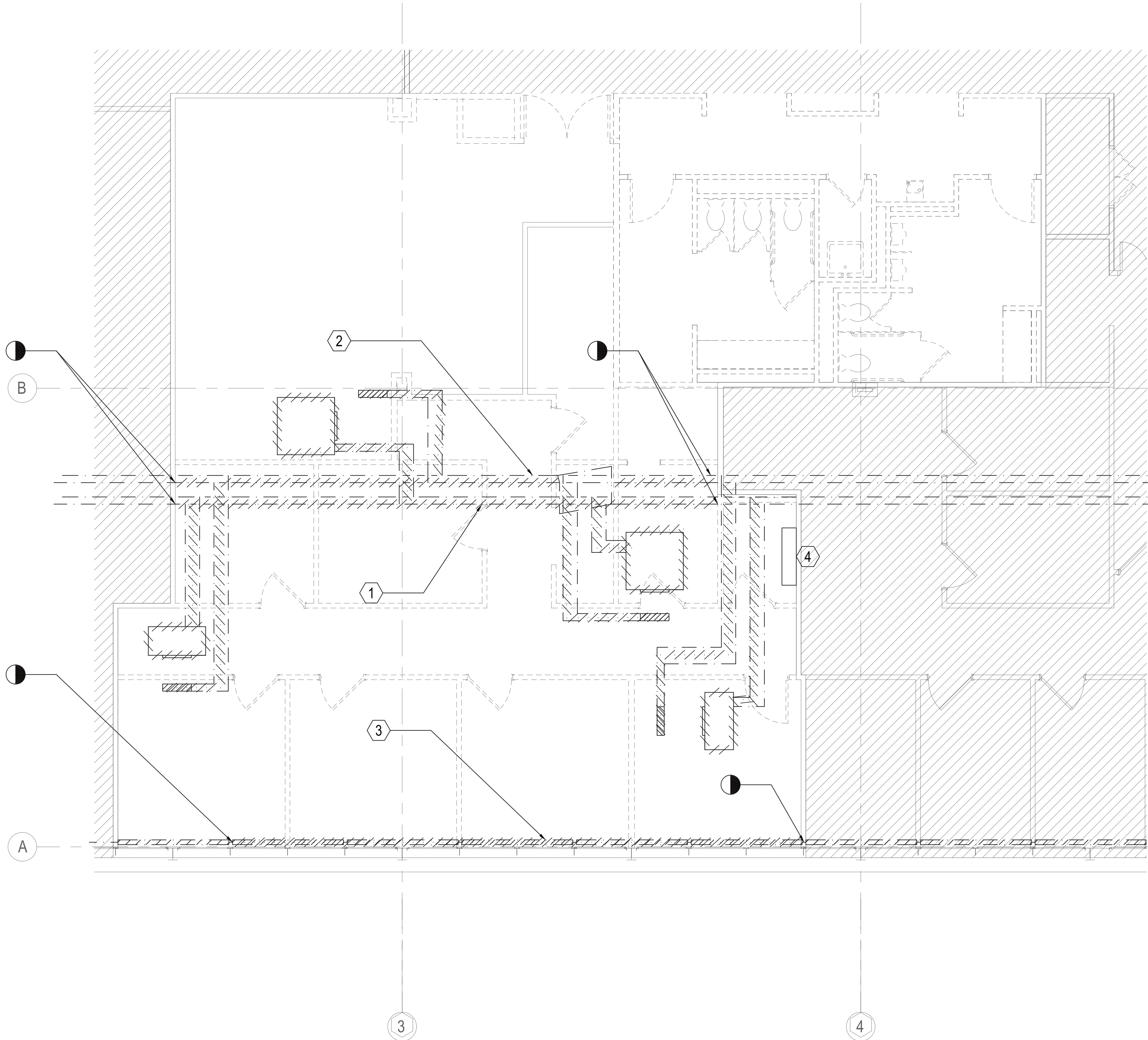
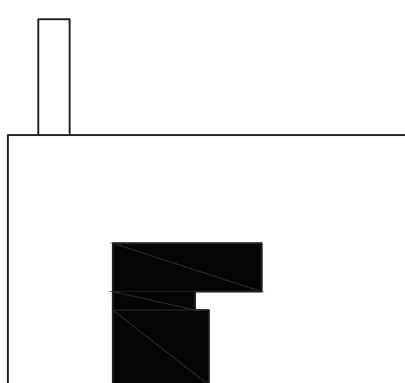
12491.000

Description
MECHANICAL
LEVEL 01
PIPING DEMOLITION PLAN

Scale
AS NOTED

M-101.00

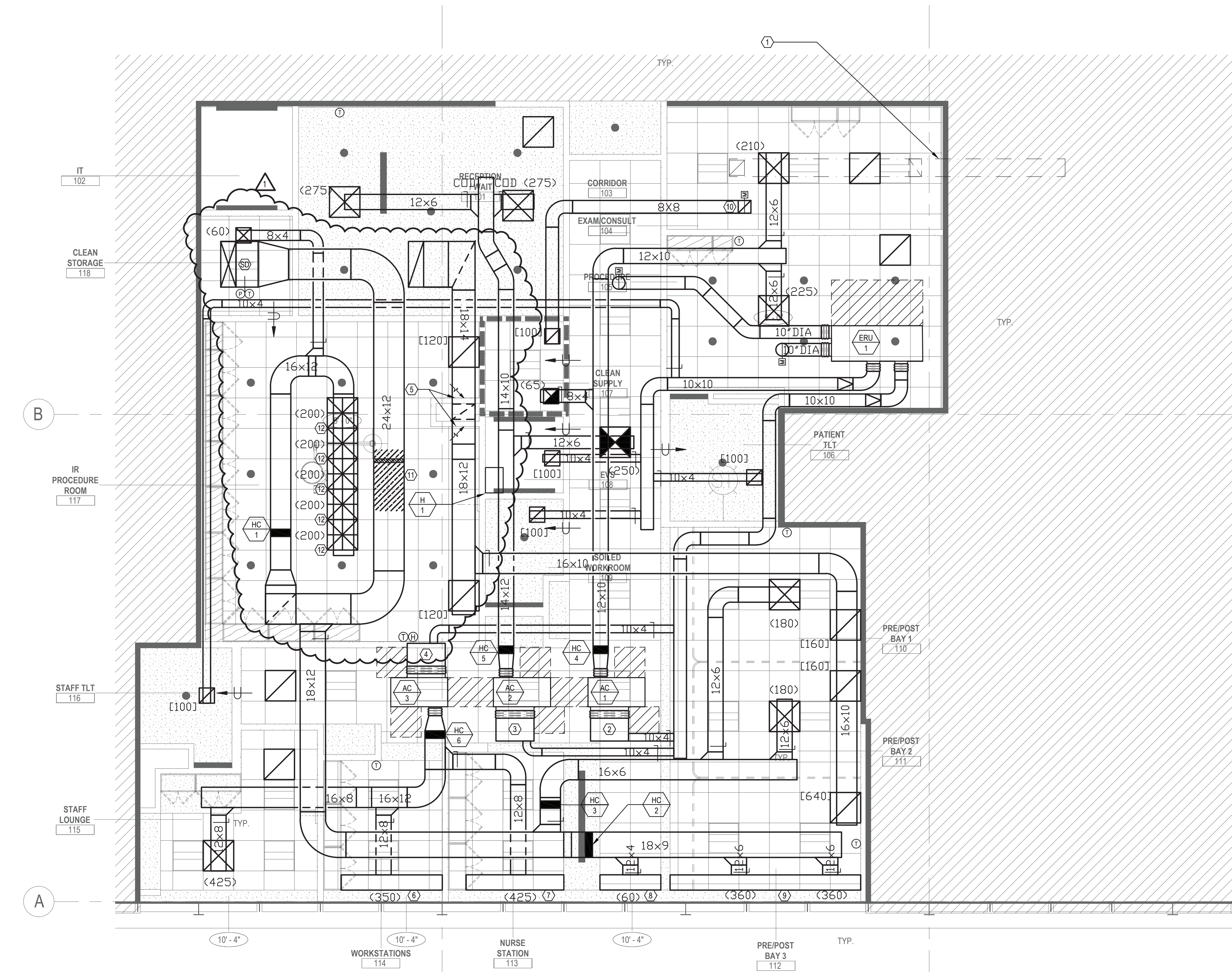
KEY PLAN

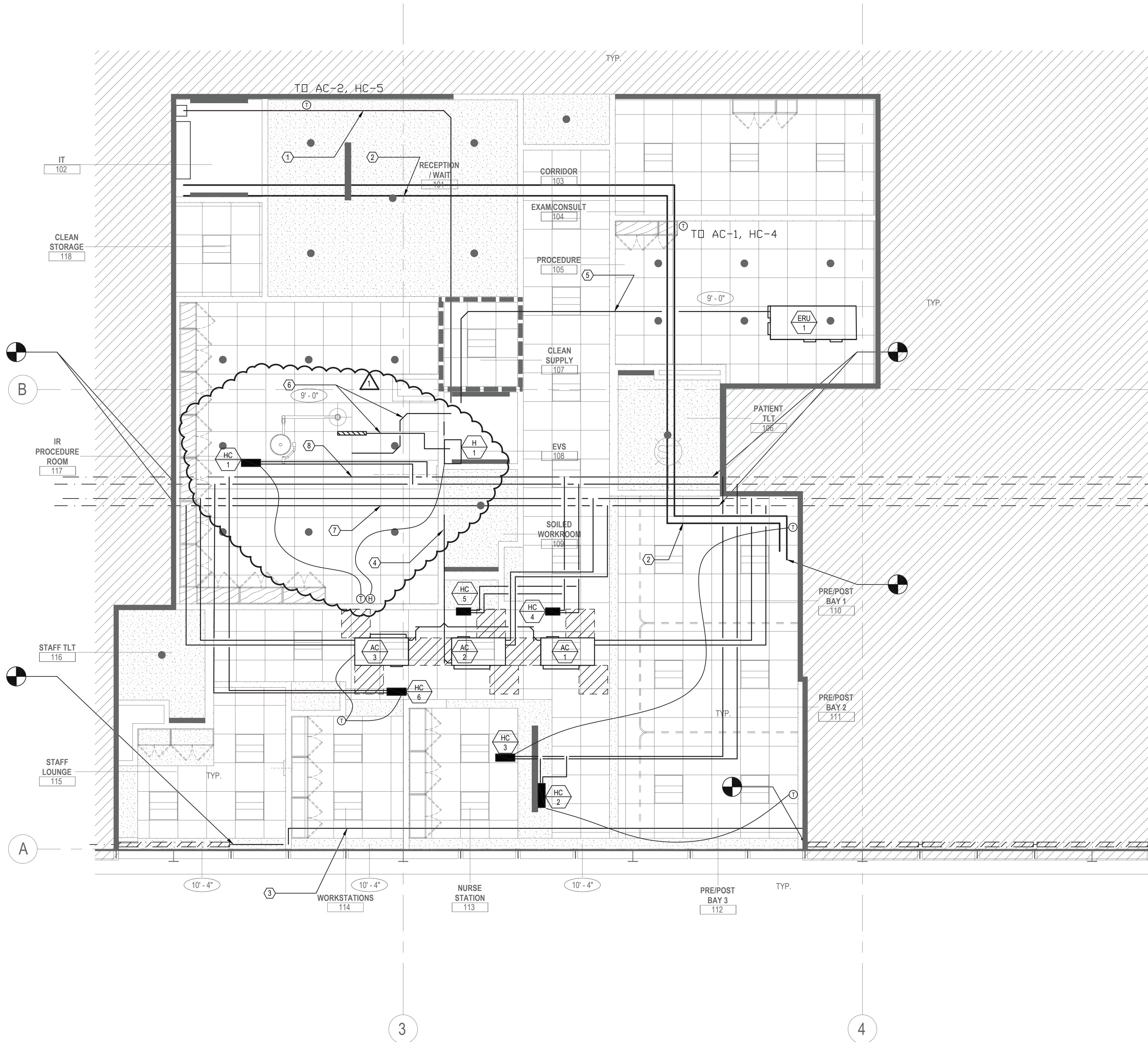


1 LEVEL 01 DEMOLITION PLAN
SCALE: 1/4" = 1'-0"
0 4 8 FEET

THIS PLAN IS APPROVED ONLY FOR WORK INDICATED ON THE APPLICATION SPECIFICATION SHEET. ALL OTHER MATTERS SHOWN ARE NOT TO BE RELIED UPON, OR TO BE CONSIDERED AS EITHER BEING APPROVED OR IN ACCORDANCE WITH APPLICABLE CODES.

DOB NOW JOB#





DRAWING NOTES:

- 1 RUN NEW 3/4-INCH PUMPED CONDENSATE FROM RELOCATED CONDENSATE PUMP TO NEW SLOP SINK.
- 2 RUN NEW REFRIGERANT PIPING FROM EXISTING UNIT LOCATION TO NEW LOCATION. CHARGE CIRCUIT WITH REFRIGERANT AND OIL AS PER MANUFACTURER'S REQUIREMENTS.
- 3 EXTEND NEW 1-1/2-INCH PERIMETER HOT WATER RADIATION PIPING FROM EXISTING FIN TUBE TO NEW WALL. RETAIN EXISTING PIPING ENCLOSURE TO WALL. EXTEND NEW PIPING UP TO CEILING AND ACROSS TO EXISTING PIPING-RADIATION AT THE FLOOR LEVEL.
- 4 RUN 3/4-INCH CONDENSATE DRAIN FROM AC-1, AC-2 AND AC-3 AND SPILL TO SLOP SINK.
- 5 RUN 3/4-INCH CONDENSATE DRAIN FROM ERU-1 AND SPILL TO SLOP SINK.
- 6 RUN 2-INCH INSULATED LOW PRESSURE STEAM PIPE AND 3/4-INCH DRAIN FROM DUCT DISPERSION TUBE AND DUCT DRAIN. CONNECT STEAM TO HUMIDIFIER H-1. SPILL DRAIN TO SLOP SINK.
- 7 RELOCATE (ELEVATE) 2-INCH CWR AND 2-INCH CWS AS REQUIRED TO CLEAR NEW CEILING HEIGHT. VERIFY PIPE SIZES IN FIELD. PROVIDE NEW TAPS IN LOCATIONS SHOWN FOR NEW HEATPUMPS.
- 8 RELOCATE (ELEVATE) 2-INCH HWS AND HWR AS REQUIRED TO CLEAR NEW CEILING HEIGHT. VERIFY PIPE SIZES IN FIELD. PROVIDE NEW TAPS IN LOCATIONS SHOWN FOR NEW HOT WATER COILS

GENERAL NOTES

KEY NOTES

COLUMBIA | COLUMBIA UNIVERSITY IRVING MEDICAL CENTER
155 White Plains Road
Tarrytown, NY 10591

Gensler
1700 Broadway
Suite 400
New York, NY 10019
United States
Tel 212.492.1400
Fax 212.492.1472

LORING
21 Pennsylvania Plaza
New York, NY 10001
United States
Tel 212.563.7400

HARMAN GROUP
450 7th Avenue
#1008
New York, NY 10123
United States
Tel 212.433.2326

MER
901 Manchester Avenue
Moyland, PA 19065
United States
Tel 610.565.4607

Date	Description
10.04.21	ISSUE FOR BID
10.12.21	ADDENDUM #1

Seal / Signature

Project Name
INTERVENTIONAL RADIOLOGY - TARRYTOWN

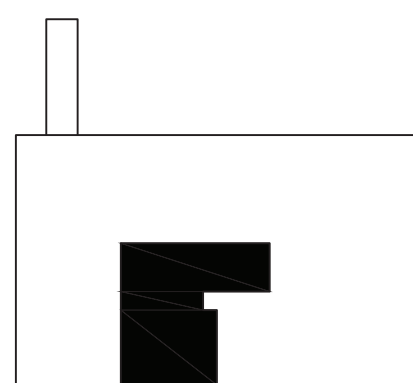
Project Number
12491.000

Description
**MECHANICAL LEVEL 01
NEW PIPING PLAN**

Scale
AS NOTED

M-202.00

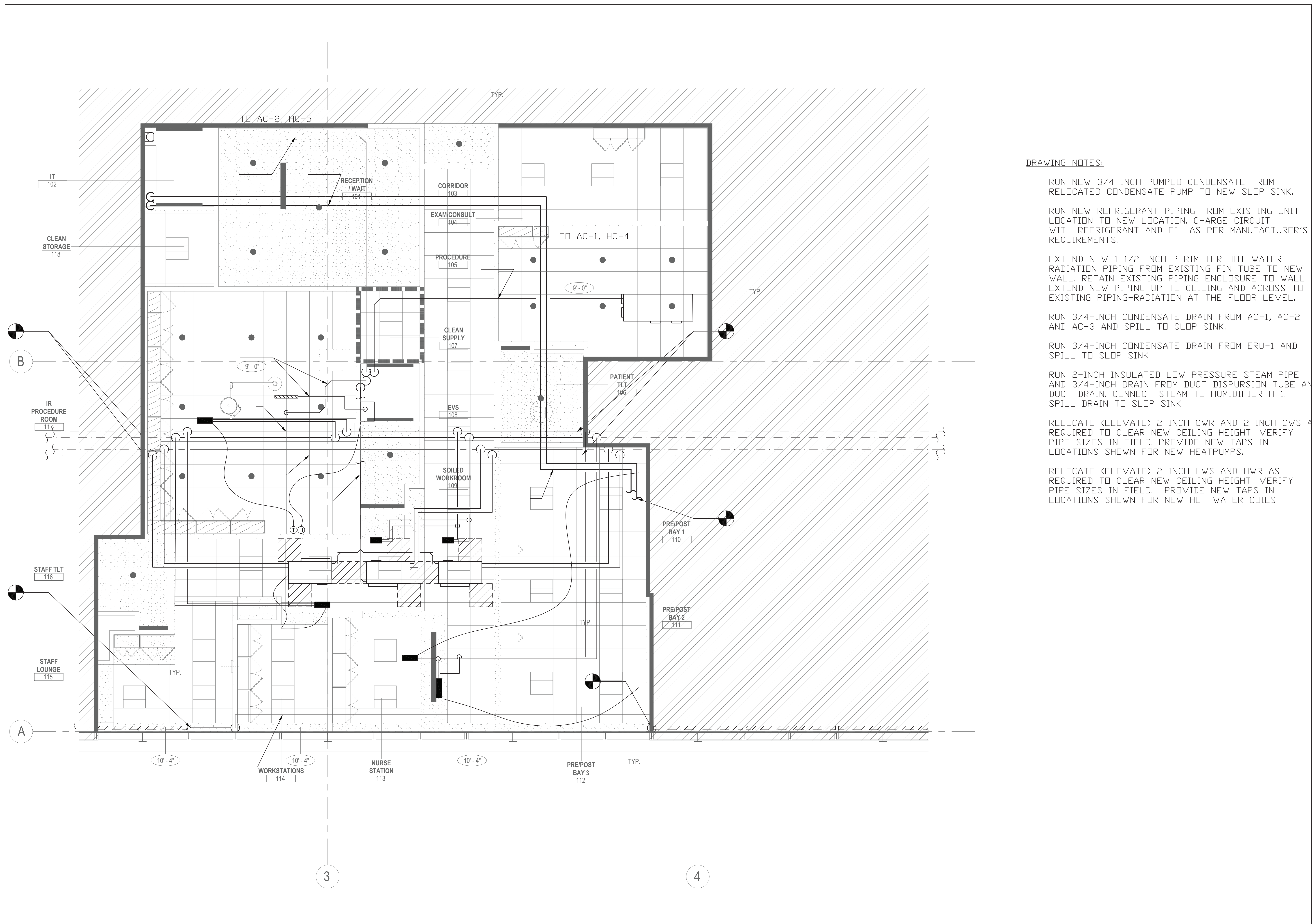
KEY PLAN



1 LEVEL 01 MECHANICAL PLAN - ALTERNATE
SCALE: 1/4" = 1'-0"
0 4 8 FEET

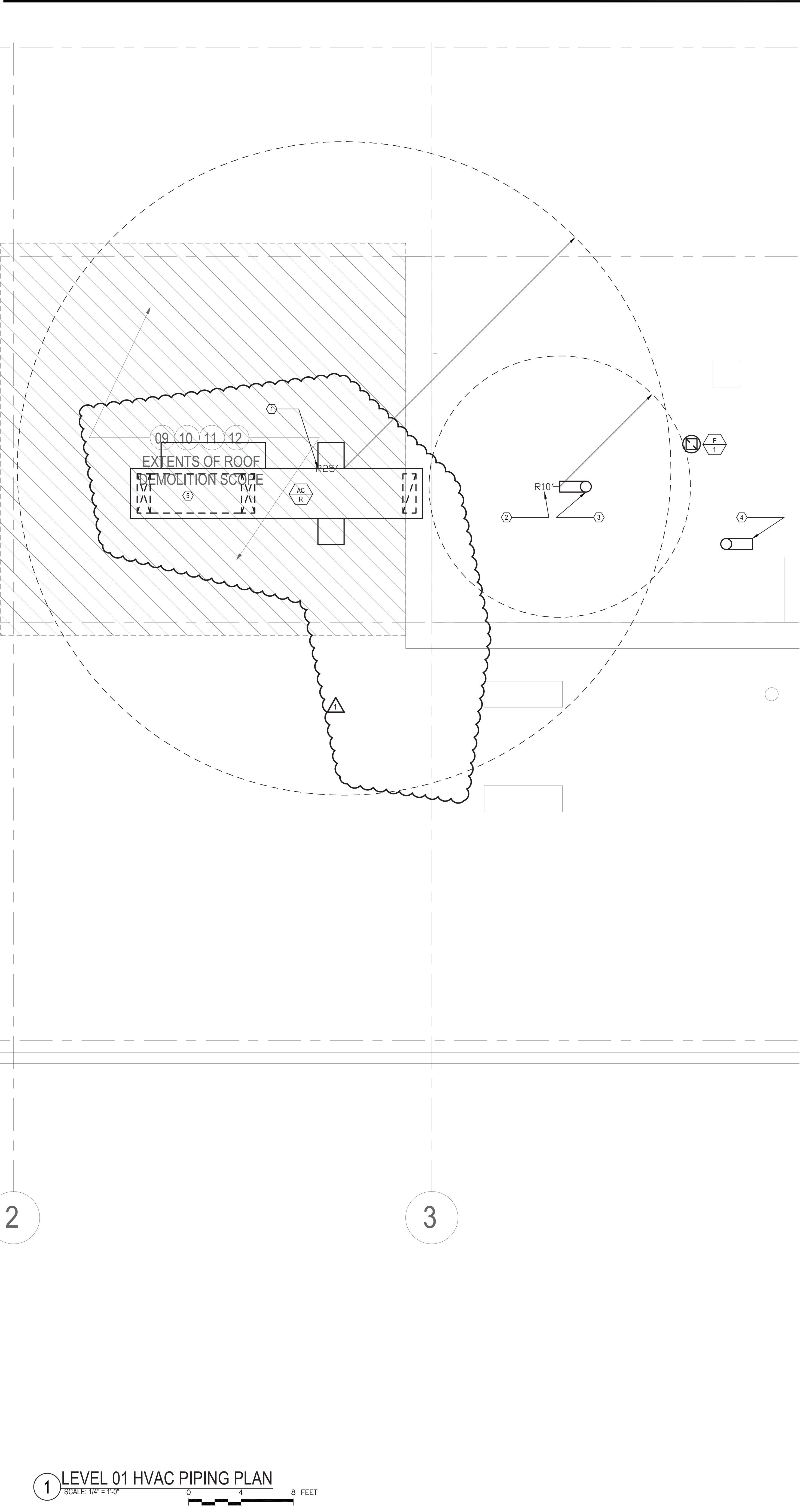
THIS PLAN IS APPROVED ONLY FOR WORK INDICATED ON THE APPLICATION SPECIFICATION SHEET. ALL OTHER MATTERS SHOWN ARE NOT TO BE RELIED UPON, OR TO BE CONSIDERED AS EITHER BEING APPROVED OR IN ACCORDANCE WITH APPLICABLE CODES.

DOB NOW JOB#



DRAWING NOTES:

- RUN NEW 3/4-INCH PUMPED CONDENSATE FROM RELOCATED CONDENSATE PUMP TO NEW SLOP SINK.
- RUN NEW REFRIGERANT PIPING FROM EXISTING UNIT LOCATION TO NEW LOCATION. CHARGE CIRCUIT WITH REFRIGERANT AND OIL AS PER MANUFACTURER'S REQUIREMENTS.
- EXTEND NEW 1-1/2-INCH PERIMETER HOT WATER RADIATION PIPING FROM EXISTING FIN TUBE TO NEW WALL. RETAIN EXISTING PIPING ENCLOSURE TO WALL. EXTEND NEW PIPING UP TO CEILING AND ACROSS TO EXISTING PIPING-RADIATION AT THE FLOOR LEVEL.
- RUN 3/4-INCH CONDENSATE DRAIN FROM AC-1, AC-2 AND AC-3 AND SPILL TO SLOP SINK.
- RUN 3/4-INCH CONDENSATE DRAIN FROM ERU-1 AND SPILL TO SLOP SINK.
- RUN 2-INCH INSULATED LOW PRESSURE STEAM PIPE AND 3/4-INCH DRAIN FROM DUCT DISPERSION TUBE AND DUCT DRAIN. CONNECT STEAM TO HUMIDIFIER H-1. SPILL DRAIN TO SLOP SINK
- RELOCATE (ELEVATE) 2-INCH CWR AND 2-INCH CWS AS REQUIRED TO CLEAR NEW CEILING HEIGHT. VERIFY PIPE SIZES IN FIELD. PROVIDE NEW TAPS IN LOCATIONS SHOWN FOR NEW HEATPUMPS.
- RELOCATE (ELEVATE) 2-INCH HWS AND HWR AS REQUIRED TO CLEAR NEW CEILING HEIGHT. VERIFY PIPE SIZES IN FIELD. PROVIDE NEW TAPS IN LOCATIONS SHOWN FOR NEW HOT WATER COILS



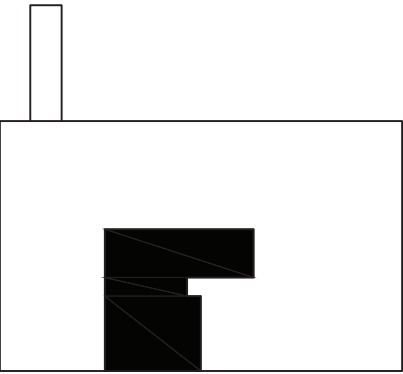
DRAWING NOTES:

- ① MINIMUM 25-FOOT CLEARANCE FROM OUTSIDE AIR INTAKE OF AC-R TO ANY EXHAUST AIR SOURCE.
- ② MINIMUM OF 10-FOOT CLEARANCE BETWEEN OUTSIDE AIR INTAKE TO ERU-1 AND THE DISCHARGE FROM ERU-1
- ③ OUTSIDE AIR INTAKE GOOSENECK WITH WMS IN FACE, 10-INCH DIAMETER TO ERU-1
- ④ SPILL AIR DISCHARGE GOOSENECK WITH WMS IN FACE, 10-INCH DIAMETER FROM ERU-1
- ⑤ RUN 36X12 SUPPLY DUCT UNDER UNIT AND ENTER BUILDING WITHIN THE PROJECT SPACE.

GENERAL NOTES

KEY NOTES

KEY PLAN



155 White Plains Road
Tarrytown, NY 10591

1700 Broadway
Suite 400
New York, NY 10019
United States

Tel 212.492.1400
Fax 212.492.1472

21 Pennsylvania Plaza
New York, NY 10001
United States

Tel 212.563.7400

450 7th Avenue
#1008
New York, NY 10123
United States

Tel 212.433.2326

901 Manchester Avenue
Moyland, PA 19065
United States

Tel 610.565.4607

Date	Description
10.04.21	ISSUE FOR BID
10.12.21	ADDENDUM #1

Seal / Signature

Project Name
INTERVENTIONAL RADIOLOGY - TARRYTOWN

Project Number
12491.000

Description
MECHANICAL ROOF PLAN

Scale
AS NOTED

M-203.00

THIS PLAN IS APPROVED ONLY FOR WORK INDICATED ON THE APPLICATION SPECIFICATION SHEET. ALL OTHER MATTERS SHOWN ARE NOT TO BE RELIED UPON, OR TO BE CONSIDERED AS EITHER BEING APPROVED OR IN ACCORDANCE WITH APPLICABLE CODES.

DOB NOW JOB#

© 2021 Gensler

SC			SELF CONTAINED AIR CONDITIONING UNIT SCHEDULE (AIR COOLED)																									BASIS OF DESIGN: AIR WISE						
UNIT NO.	LOCATION	AREA SERVED	COMPRESSOR DATA		SUPPLY FAN DATA						EVAPORATOR COIL DATA						CONDENSER DATA						FILTER DATA			ELECTRICAL DATA					MODEL No.	MEA No.	REMARKS	
			NO. OF COMP.	HP (EA.)	TOTAL CFM	MIN. O.A. CFM	OUTLET VEL. (FPM)	TOTAL S.P. (IN.W.G.)	MIN. EXT. S.P. (IN.W.G.)	FAN RPM	MOTOR HP	ENT. DB (°F)	ENT. WB (°F)	LVG. DB (°F)	LVG. WB (°F)	MAX. FACE VEL. (FPM)	MIN. ROWS DEEP	OUT—DOOR DESIGN DB (°F)	No. OF FAN	MAX. COND. TEMP. (°F)	TOTAL CFM	FAN RPM	EXT. S.P. (IN.W.G.)	MOTOR HP (EACH)	TYPE	IN. THICK	FACE VEL. (FPM)	VOLT/ PH	FLA	MCA				MFS
AC-R	ROOF	IR — RECOV.	1	—	2200	400	1100	4.88	2.0	3105	5	80	67	50.0	49.6	406	6	95	—	120	—	—	—	—	MERV	2	400	208-3	70.1	70.1	80	—	—	SEE NOTES
—	—	—	—	—	—	—	—	—	—	—	—	—	—	—	—	—	—	—	—	—	—	—	—	—	—	—	—	—	—	—	—	—	—	

- NOTES:
1. PROVIDE UNIT WITH ECM SUPPLY AND RETURN FAN MOTORS. RETURN FAN TO BE 1800 CFM, 1.0 ESP, 1.9 TSP, 1.5 HP, 1770 RPM
 2. UNITS TO HAVE BACKNET COMPATIBLE DDC CONTROLS, MIXED AIR AND SUPPLY AIR THERMOSTATS DISCHARGE AIR SP SENSOR FOR THE SUPPLY AIR FAN CONTROL, AND AIR FLOW SWITCH.
 3. UNIT INLET AND DISCHARGE ARRANGEMENTS ARE TO BE COORDINATED AND CONFIRMED WITH APPROVED SHEETMETAL SHOP DRAWINGS.
 4. UNIT TO HAVE MERV8 PRE-FILTERS, MERV 14 POST FILTERS.
 5. UNIT IS TO HAVE 2-INCH INSULATION AND DOUBLE WALL CONSTRUCTION. UNIT IS TO BE MOUNTED ON A SINGLE SKID AND IS TO BE WEATHERPROOF FOR ROOF MOUNTING.
 6. UNIT IS TO HAVE SINGLE POINT ELECTRICAL CONNECTION AND A 120V OUTLET FOR SERVICING.

SC			SELF CONTAINED AIR CONDITIONING UNIT (WATER COOLED)																			BASIS OF DESIGN: WATER FURNACE										
UNIT NO.	LOCATION	AREA SERVED	COMPRESSOR DATA		SUPPLY FAN DATA						EVAPORATOR COIL DATA						CONDENSER DATA				FILTER DATA			ELECTRICAL DATA				MODEL No.	EER COOLING	REMARKS		
			NO. OF COMP.	HP (EA.)	TOTAL CFM	MIN. O.A. CFM	OUTLET VEL. (FPM)	TOTAL S.P. (IN.W.G.)	MIN. EXT. S.P. (IN.W.G.)	FAN RPM	MOTOR HP	ENT. DB (°F)	ENT. WB (°F)	LVG. DB (°F)	MBH SENS. (MBH)	MBH TOTAL (MBH)	MIN. ROWS DEEP	GPM	TEMP °F		MAX. P.D. (FT.)	FOULING FACTOR	TYPE	IN. THICK	FACE VEL. (FPM)	VOLT/ PH	FLA				MCA	MOCP
																			ENT.	LVG.												
AC-1	CORR. CLG	RM 104 ~ 109	1	—	500	150	720	—	1.0	—	0.5	81	66	55.4	13.81	21.62	—	5.0	85	95.72	6.7	—	MERV8	2	180	208-1	17.5	20.9	30	VERSA-023	15.0	—
AC-2	CORR. CLG	RM 101 ~ 103	1	—	800	100	1150	—	1.0	—	0.5	77	64	58.3	16.14	22.78	—	5.5	85	95.29	7.6	—	MERV8	2	288	208-1	17.5	20.9	30	VERSA-023	15.0	—
AC-3	CORR CLG.	RM 113 ~ 116	1	—	1200	100	1450	—	1.0	—	0.5	76.7	64	5.4	28.25	34.99	—	8.5	85	95.16	9.4	—	MERV8	2	675	208-1	21.3	20.9	40	VERSA-036	15.0	—
—	—	—	—	—	—	—	—	—	—	—	—	—	—	—	—	—	—	—	—	—	—	—	—	—	—	—	—	—	—	—	—	—

- NOTES:
1. PROVIDE UNIT WITH ECM SUPPLY FAN MOTOR.
 2. UNITS TO HAVE BACKNET COMPATIBLE DDC CONTROLS, MIXED AIR AND SUPPLY AIR THERMOSTATS AND AIR FLOW SWITCH.
 3. UNIT INLET AND DISCHARGE ARRANGEMENTS ARE TO BE COORDINATED AND CONFIRMED WITH APPROVED SHEETMETAL SHOP DRAWINGS.

RHC/HC/HRC/PHC			HEATING COIL SCHEDULE (HOT WATER)													MFG: GREENHECK		
COIL NO.	EQUIPMENT OR SYSTEM SERVED	AIR DATA					FLUID DATA					COIL DATA		ARRANGEMENT		REMARKS		
		CFM	FACE VELOC. (FPM)	D.B. TEMP. (°F)		P.D. (N.W.G.)	FLUID TYPE	GPM	TEMP. (°F)		P.D. (FT)	MIN. ROWS DEEP	NOMINAL SIZE (IN.) F.W. X F.L.	TOTAL NO. OF COILS	NO. OF COILS HI X WIDE			
				ENT.	LVG.				ENT.	LVG.								
HC-1	AC-R, IR RM	1060	763	55	79.7	0.10	WTR	2.9	180	160	6.8	1	12.5 X 16	1	1	—		
HC-2	AC-R, REC. #3	780	624	55	94.3	0.12	WTR	3.4	180	160	8.4	1	10 X 18	1	1	—		
HC-3	AC-R, REC. #1,2	360	648	55	88.6	0.15	WTR	1.3	180	160	0.3	1	5 X 16	1	1	—		
HC-4	AC-1	500	600	55	90.6	0.10	WTR	2.0	180	160	3.0	1	10 X 12	1	1	—		
HC-5	AC-2	800	658	55	84.6	0.14	WTR	2.6	180	160	0.2	1	12.5 X 14	1	1	—		
HC-6	AC-3	1200	864	55	88.4	0.21	WTR	4.4	180	160	4.4	2	12.5 X 16	1	1	—		
—	—	—	—	—	—	—	—	—	—	—	—	—	—	—	—	—		

ERV-1 SCHEDULE:

1. UNIT TO BE AN ALPHA-85 MODEL 8AH100G1AST46
2. UNIT TO GE 208 V-1 PH, 9.3 MCA, 15 MOCP, WITH 1 COMPRESSOR, 1 SUPPLY FAN AND 1 RETURN FAN.
3. UNIT TO BE 208 V-1 PH, 9.3 MCA, 15 MOCP, WITH 1 COMPRESSOR, 1 SUPPLY FAN AND 1 RETURN FAN.
4. UNIT IS TO BE 16 MBH(3), 20.4 MBH(7) WITH AN ISMER OF 11.1.
5. UNIT IS TO HAVE 2-INCH MERV 13 FILTERS ON THE OUTSIDE AIR, MERV 8 FILTERS ON THE RETURN AIR.
6. UNIT IS TO HAVE SINGLE POINT ELECTRICAL CONNECTION, NON-FUSED DISCONNECT AND SHALL HAVE DDC CONTROLS WITH BACKNET CAPABILITY.
7. UNIT SHALL HAVE SEALED INTERNAL INSULATION.

SH			STEAM HUMIDIFIER SCHEDULE							BASIS OF DESIGN: NEPTRONIC		
UNIT NO.	LOCATION	AREA OR SYSTEM SERVED	AIR DATA			STEAM DATA		DUCT SIZE, W x H (IN.)	NO. OF MANIF.	MODEL No.	REMARKS	
			TOTAL CFM	MOISTURE CONTENT GR/LB DRY AIR		TOTAL LBS/HR	INLET PRESS. (PSIG)					
				ENT.	LVG.							
H-1	JAN. CL.	IR, RECOV.	2200	26	38	17	5	24X12	11	SKE4-N06M	SEE NOTES	
-	-	-	-	-	-	-	-	-	-	-	-	

- NOTES:
1. PROVIDE UNIT WITH STEAM GENERATING MODULATING HUMIDIFIER - 208V, 3PH, 16.5 FLA
 2. UNIT TO HAVE BACKNET COMPATIBLE DDC CONTROLS, DUCT MOUNTED HIGH AND LOW LIMIT HUMIDISTAT, ROOM MOUNTED HUMIDISTAT, AND AIR FLOW SWITCH.
 3. PROVIDE UNIT WITH LO-HOSE 1-3/8 NF, SCH80, NF SH80, AND SW APS ACCESSORIES.
 4. PROVIDE UNIT WITH MF SAM-AEZ STEAM DISPERSION MANIFOLD.
 5. UNIT TO BE INTERLOCKED WITH ROOFTOP AIR CONDITIONING UNIT AC-R.

SF - SUPPLY FAN EF - EXHAUST FAN			FAN SCHEDULE									BASIS OF DESIGN: GREENHECK		
UNIT NO.	LOCATION	AREA OR SYSTEM SERVED	FAN TYPE	CFM	TSP	FAN RPM	DRIVE	MOTOR DATA			WEIGHT (LBS)	MODEL NO.	REMARKS	
								BHP	HP	V/PH				
F-1	ROOF	MED-GAS / CLEAN STORAGE	MUSHROOM	100	0.375	999	BELT	0.04	0.167	120-1	100	GB-097	SEE NOTE	

- NOTES: PROVIDE UNIT WITH SPARK-PROOF CONSTRUCTION, EXPLOSION PROOF MOTOR, ROOF CURB, MANUAL MOTOR STARTER WITH OVERLOADS, INTERLOCK FAN WITH MOTORIZED DAMPERS. FAN TO RUN CONTINUOUSLY.

THIS PLAN IS APPROVED ONLY FOR WORK INDICATED ON THE APPLICATION SPECIFICATION SHEET. ALL OTHER MATTERS SHOWN ARE NOT TO BE RELIED UPON, OR TO BE CONSIDERED AS EITHER BEING APPROVED OR IN ACCORDANCE WITH APPLICABLE CODES.

DOB-NOW-JOB#

GENERAL NOTES

155 White Plains Road
Tarrytown, NY 10591

Gensler

1700 Broadway
Suite 400
New York, NY 10019
United States
Tel 212.492.1400
Fax 212.492.1472

LORING

21 Pennsylvania Plaza
New York, NY 10001
United States
Tel 212.563.7400

HARMANGROUP

450 7th Avenue
#1008
New York, NY 10123
United States
Tel 212.433.2326

MER

901 Manchester Avenue
Moyland, PA 19065
United States
Tel 610.565.4607

KEY NOTES

Date	Description
10.04.21	ISSUE FOR BID
10.12.21	ADDENDUM #1

Seal / Signature

Project Name

INTERVENTIONAL
RADIOLOGY - TARRYTOWN

Project Number

12491.000

Description

MECHANICAL
SCHEDULES

Scale

AS NOTED

M-300.00