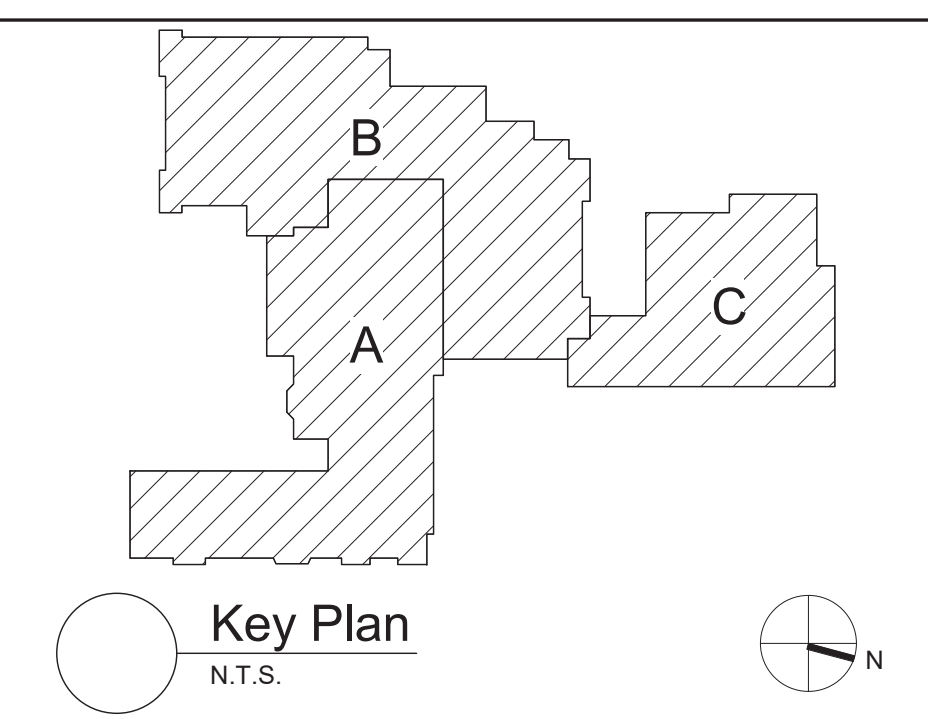


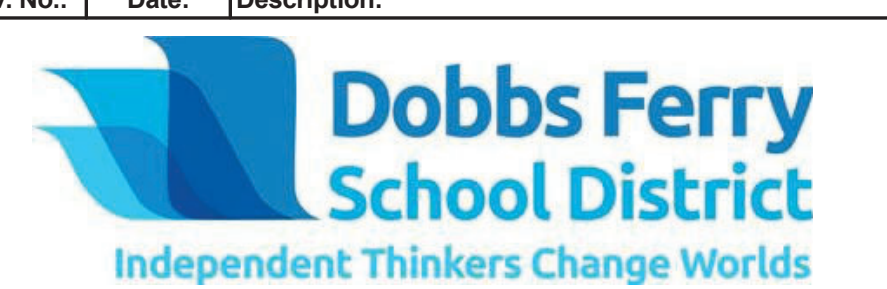
1 Roof Phasing Plan  
1/16" = 1'-0"

- GENERAL PHASING NOTES**
- A. THIS DRAWING HAS BEEN PREPARED BASED UPON INFORMATION SUPPLIED BY THE CONSTRUCTION MANAGER, CALGI CONSTRUCTION COMPANY, INC.
  - B. ROOFING PHASING AREAS MUST BE COORDINATED WITH EXISTING CONDITIONS TO ENSURE POSITIVE ROOF SLOPE AND DRAINAGE TO ROOF DRAINS IS MAINTAINED IN BOTH NEW AND EXISTING ROOFING AREAS AT ALL TIMES.
  - C. ROOF PHASING MUST BE COORDINATED WITH ROOFING SHOP DRAWINGS TO ENSURE APPROPRIATE START AND STOP LOCATIONS BETWEEN PHASES IS DEVELOPED.
  - D. ROOFING AREAS COMPLETED IN ONE PHASE MAY REQUIRE PENETRATIONS AND ADDITIONAL WORK IN ANOTHER PHASE DEPENDENT UPON SEQUENCES OF WORK.
  - E. THE ROOF PHASING AREAS ARE APPROXIMATE AREAS. COORDINATION WILL BE REQUIRED WITH THE CONSTRUCTION MANAGER AND OTHER TRADES RESPECTIVE TO THE PROPOSED IMPROVEMENTS INCLUDING BUT NOT LIMITED TO ADJUSTMENTS TO ROOF SLOPES, REMOVAL AND INSTALLATION OF MECHANICAL IMPROVEMENTS AND PROPOSED STRUCTURAL REINFORCEMENT TO THE ROOF DECK.



S.E.D. Control No. 66-04-03-03-001-019

2	03/07/21	BID ADDENDUM NO 2
Rev. No.:	Date:	Description:



complex world  
CLEAR SOLUTIONS

Tetra Tech Engineers, Architects  
& Landscape Architects, P.C.

**BID SET**



Dobbs Ferry Union Free School District  
Dobbs Ferry, New York

Reconstruction To:  
Middle / High School

Roof Phasing Plan

Drawn By: TTAE	Date: 07/02/2020	Drawing Number:
Project No.:	234903-20001	BG201