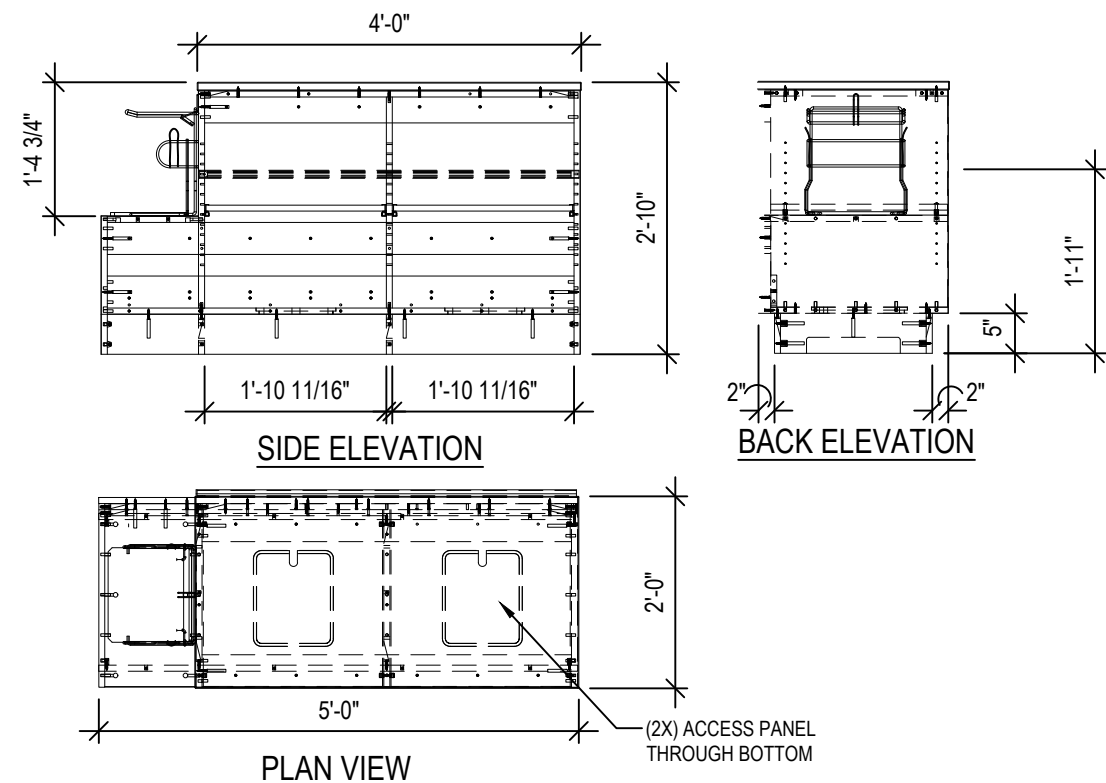


FIXTURE PLAN KEY		
SYMBOL	DESCRIPTION	HEIGHT
AW	ADVERTISING 4 WAY	4'-0" A.F.F.
AF	ADVERTISING FLAT	0'-0" A.F.F.
G	GONDOLA	7'-0" A.F.F. (Consider all unmarked fixtures to be Gondola's)
D	DOUBLE TABLE	1'-9" A.F.F. - 3'-8" A.F.F.
S	SINGLE TABLE	3'-8" A.F.F.
F	FLAT DISPLAY MAT	0'-0" A.F.F.
XP	EXTENDED PEG PANEL	7'-0" A.F.F.
PT	POWER TOOL DISPLAY	7'-0" A.F.F.
AT	AIR TOOL DISPLAY	7'-0" A.F.F.
MPR	MOTOR/ PUMP RACK	7'-0" A.F.F.
B	BOX STOCK ON DISPLAY FLAT	---
UP	UPRIGHT PROTECTOR	---

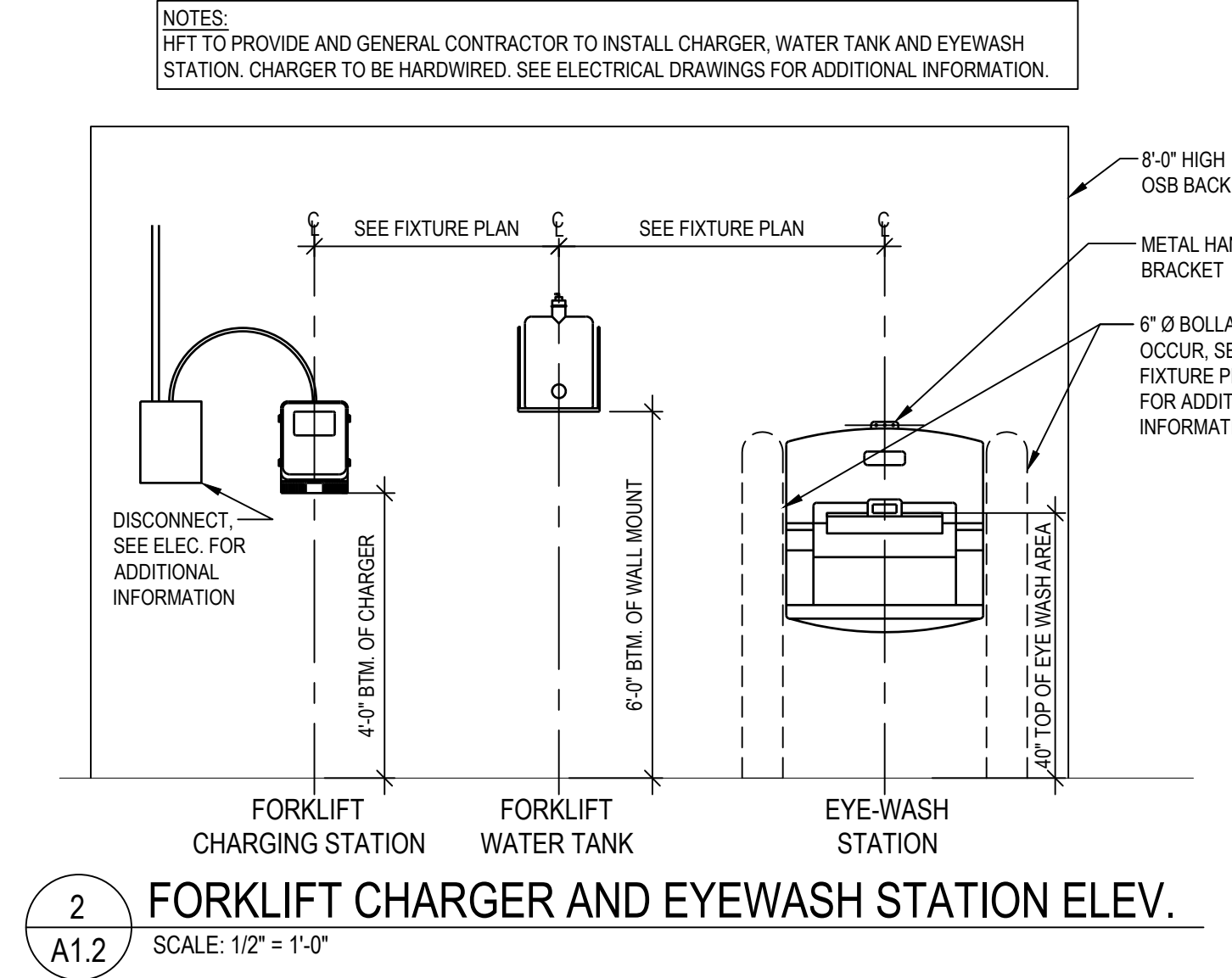
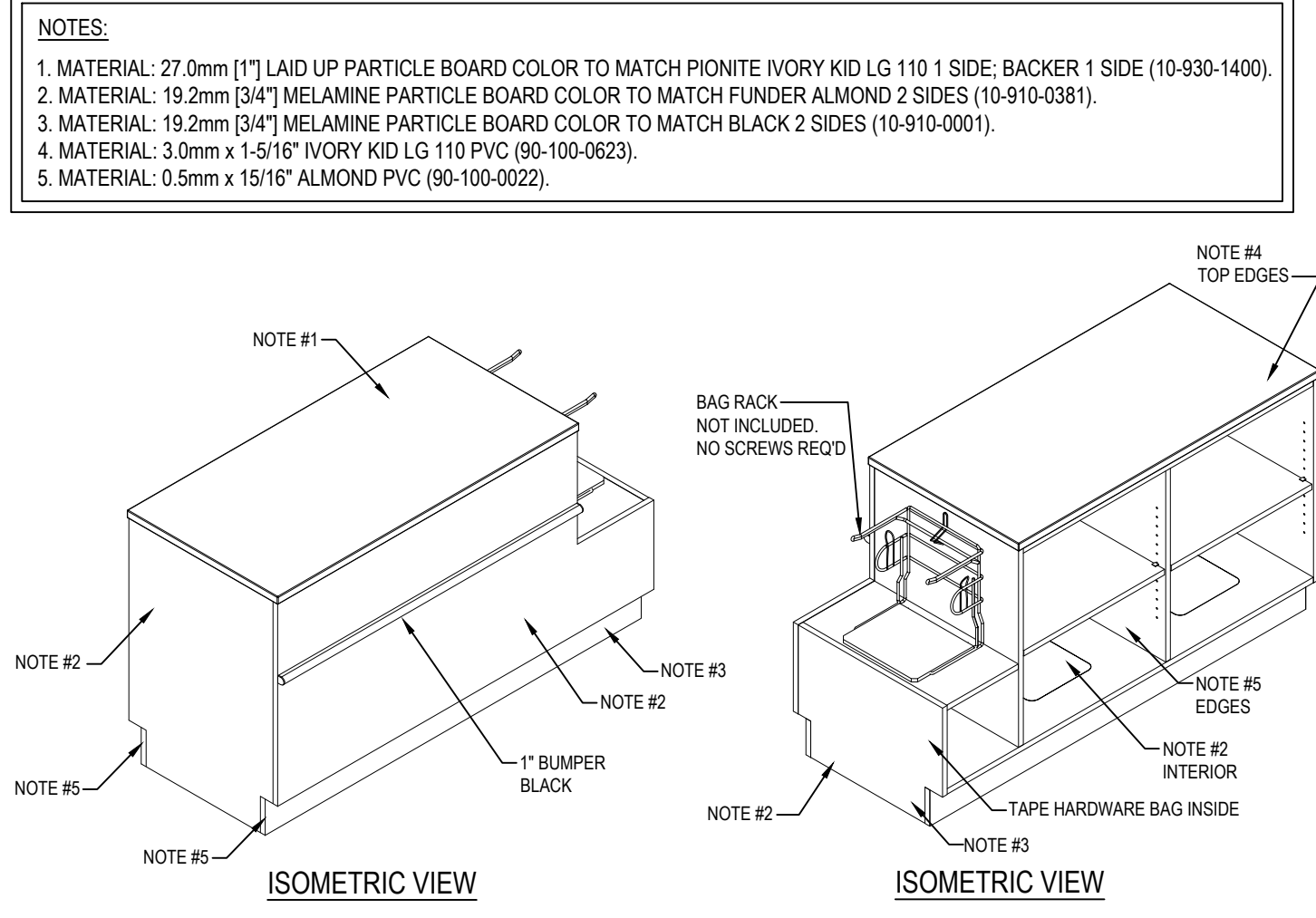
- 400 SERIES FIXTURE PLAN KEY NOTES**
- ABC, CLASS 2A- 20BC (MIN.) WALL MOUNTED FIRE EXTINGUISHER PER CODE. FIRE EXTINGUISHERS LOCATED TO PROVIDE MAXIMUM FLOOR AREA PER UNIT OF 3,000 S.F. AND A MAXIMUM TRAVEL DISTANCE OF 75' AS SHOWN. CONTRACTOR TO VERIFY FINAL LOCATIONS WITH FIRE MARSHAL.
 - FRONT/BACK OF HOUSE FIXTURES ANCHORED TO SLAB PER MANF. INSTRUCTIONS. VERIFY ADDITIONAL REQUIREMENTS WITH THE HARBOR FREIGHT TOOLS CONSTRUCTION MANAGER. SEE A1.4 1.5, 1.6, 1.7, 1.8, 1.9 AND 1.10 FOR ADDITIONAL INFORMATION. SHELVING AT SALES REPLENISHMENT RACKING TO BE OPEN WIRE SHELVES.
 - CASH WRAP. HFT GENERAL CONTRACTOR TO VERIFY EXACT LOCATIONS WITH THE HARBOR FREIGHT TOOLS CONSTRUCTION MANAGER. REFER TO THE ELECTRICAL DRAWINGS FOR ELECTRICAL REQUIREMENTS. INSTALL ALL CASH WRAPS WITH A MAXIMUM COUNTER HEIGHT OF 34" A.F.F. FOR A MINIMUM COUNTER LENGTH OF 36" PER ACCESSIBILITY CODES. SEE DETAIL 1/A1.2 FOR ADDITIONAL INFORMATION.
 - APPROXIMATE POWER POLE LOCATION. APPROXIMATE DECK AT POWER POLE IS 20'-2" IN HEIGHT. HFT GENERAL CONTRACTOR TO CONFIRM CASH WRAP IS IN PROPER LOCATION PRIOR TO POWER POLE INSTALLATION AND FINAL HOOK UP. E.G. TO PROVIDE AND INSTALL UNI-STRUT ATTACHED TO STRUCTURE FOR SECURING POWER POLE IN PLACE. PAINT UNI-STRUT TO MATCH EXPOSED STRUCTURE.
 - CASH REGISTER
 - (1) 6'-0" AND (1) 7'-0" FACTORY GRAY COUNTER TOP FOR THE MANAGERS OFFICE DESK AND (2) 6'-0" FACTORY GRAY COUNTER TOP FOR THE CASH ROOM DESK. SEE DETAIL 12/A4.0 FOR ADDITIONAL INFORMATION.
 - GRAY GROMMET IN COUNTER BY HFT GENERAL CONTRACTOR. VERIFY EXACT LOCATION W/ HFT.
 - APPROXIMATE LOCATION OF SAFE BY HFT.
 - APPROXIMATE LOCATION OF IT CABINET BY HFT.
 - PRINTER.
 - *KRONOS SERIES 4000* TIME CLOCK. MOUNT CENTERED BETWEEN MANAGER OFFICE DOOR & WINDOW @ 44" A.F.F.
 - LOCATION OF HFT FORKLIFT BATTERY CHARGER. SEE ELECTRICAL DRAWINGS & DETAIL 2/A1.2 FOR ADDITIONAL INFORMATION.
 - LOCATION OF HFT FORKLIFT WATER TANK. SEE DETAIL 2/A1.2.
 - LOCATION OF HFT EYE-WASH STATION. SEE DETAIL 2/A1.2.
 - APPROXIMATE LOCATION OF CART RETURN AREA.
 - BANNER STORAGE AND CHARGING STATION. SEE DETAIL 9/A4.0.
 - DASHED LINE INDICATES OSB TO BE ATTACHED TO BACK SIDE OF FIXTURES. SEE TAG SCHEDULE, TAG "OW", ON A1.3 FOR ADDITIONAL INFORMATION. PAINT P-1.
 - 18" ULINE CONVEX SAFETY MIRROR TO BE MOUNTED FOR VISIBILITY AROUND CORNER.

SQUARE FOOTAGE BREAKDOWN	
SALES AREA SQUARE FOOTAGE	9,412 S.F.
SALES REPLENISHMENT SQUARE FOOTAGE	5,052 S.F.
OFFICE AREA SQUARE FOOTAGE	708 S.F.
TOTAL OVERALL LEASE SQUARE FOOTAGE	15,172 S.F.

GENERAL NOTES			
1. REFER TO GENERAL NOTES ON SHEET A0.2 FOR ADDITIONAL INFORMATION			
2. HFT GENERAL CONTRACTOR TO VISIT SITE AND VERIFY EXISTING CONDITIONS PRIOR TO SUBMITTING PROPOSALS AND COMMENCING WORK.			
3. HFT GENERAL CONTRACTOR TO PROVIDE NON-COMBUSTIBLE CEILING AND WALL BLOCKING AS NECESSARY.			
4. HFT GENERAL CONTRACTOR TO INSTALL POWER POLES FOR CASH WRAPS. LOCATIONS INDICATED ON PLAN. PRIOR TO INSTALLATION COORDINATE WITH FIXTURE FABRICATOR.			
5. HFT GENERAL CONTRACTOR TO FIELD SURVEY AND COORDINATE ACCESS OF ALL MILLWORK WITH HARBOR FREIGHT TOOLS OPERATIONS / STORE DESIGN.			
6. HFT GENERAL CONTRACTOR AND FIXTURE FABRICATOR TO COORDINATE WITH APPROVED FIXTURE DRAWINGS.			
7. HFT GENERAL CONTRACTOR TO COORDINATE WITH THE HARBOR FREIGHT TOOLS CONSTRUCTION MANAGER FOR NEW FIXTURE DROP LOCATIONS, TYPES, AND QUANTITIES.			
8. ONLY GRAPHIC REPRESENTATIONS OF FIXTURES ARE SHOWN. ALL DIMENSIONS ARE APPROXIMATE. COORDINATE WITH FIXTURE DESIGNER AND FOLLOW ALL GOVERNING CODES FOR FINAL LOCATIONS AND PLACEMENT.			
9. FIXTURE INSTALLER TO ADJUST FIXTURE LAYOUT AS REQUIRED TO PROVIDE 44" CLEAR PAST ANY COLUMN U.N.O.			
CLEARANCE HEIGHTS CHART			
AREA	CLEARANCE	HIGH POINT	LOW POINT
SALES	BOTTOM OF DECK	±20'-8" A.F.F.	±20'-1" A.F.F.
	BOTTOM OF STRUCTURE	±18'-6 1/2" A.F.F.	±18'-3" A.F.F.
	SPRINKLER LINES	@ L.P. OF STRUCTURE	
SALES REPLENISHMENT	BOTTOM OF DECK	±20'-11" A.F.F.	±20'-8" A.F.F.
	BOTTOM OF STRUCTURE	±19'-6" A.F.F.	±18'-6 1/2" A.F.F.
RECEIVING AREA	SPRINKLER LINES	@ L.P. OF STRUCTURE	
	CLEARANCE @ O.H. DOOR		±11'-7 3/4" A.F.F.



1 ACCESSIBLE TRANSACTION COUNTER
SCALE: 1/2" = 1'-0"



2 FORKLIFT CHARGER AND EYEWASH STATION ELEV.
SCALE: 1/2" = 1'-0"

ADA ARCHITECTS SERVICES, P.C.
17710 Detroit Avenue
Phone (216) 521-5134
www.adaarchitects.com

HARBOR FREIGHT TOOLS

314 NY ROUTE 59
NYACK, NY 10960

THESE DOCUMENTS CONTAIN INFORMATION PROPRIETARY TO ADA ARCHITECTS SERVICES, P.C.
UNAUTHORIZED USE OF THESE DOCUMENTS IS EXPRESSLY PROHIBITED UNLESS AGREED UPON IN WRITING.

REVISIONS								
#	DATE	TYPE						
1								
2								
3								
4								
5								
6								
7								
8								
9								
FIXTURE PLAN								
DATE			9/22/21					
JOB NO.			20420					
			A1.2					
SHEET NO.								