

BID Addendum No. Four (4)

PROJECT: Iona Preparatory School
Addition and Alterations to the
Pail Verni Fine Arts Center
255 Wilmot Road
New Rochelle, NY 10804

ADDENDUM NO. Four (4)
Initiation Date: June 22, 2021

Architect's Project No.: 1618
PGA Contact: Danny Lam
dlam@petergisolfiassociates.com
914-478-3677 x 340

TO ALL BIDDERS:

You are directed to make the following changes in this Contract:

B. Architectural

1. Sheet L-200 – this sheet is being re-issued with location of three (3) condenser units at Verni Center.
2. Sheet A-101 – see sketch SKA-01 for clarification to window tags at room 125.
3. Sheet A-105a – note the exterior light fixtures on the Verni building are part of the base bid and not to be excluded in Deduct Alternate #1.
4. Sheet A-353 – this sheet is being re-issued with clarification on the exterior façade finish at stair B.
5. Sheet A-372 – note this sheet does not exist. All details referencing A-372 shall refer to sheet A-370.
6. Sheet A-601 – the wood species for detail 2 at the proscenium opening shall be white oak.
7. Specification section 10 50 30 Canopies shall be added to the project.
8. Specification section 10 90 00 Miscellaneous Specialties – remove reference to glass marker boards from specifications.
9. The 1" insulated panels referenced on the exterior wall sections shall be Endurex 525 by Nudo or equal.
10. All interior railings are painted steel finish and all site railings are galvanized and powder coated.

C. Structural

1. The GC shall include design for roof trusses and exterior wall framing. Refer to specification section 05 40 00 Formed Metal Framing and sheet S-002 for guidance.

D. Mechanical

No change.

E. Plumbing

No change.

F. Sprinkler

No change.

G. Electrical

1. Sheet E-302 – note symbols L-1, L-2, L-3, R-1, R-2, and R-3 in the theater are wall speakers by others.

PETER GISOLFI ASSOCIATES

566 Warburton Avenue	Architects
Hastings-on-Hudson NY 10706	Landscape Architects
914 478-3677 914 478-1600 fax	Interior Architects

BID Addendum No. Four (4)

2. Sheet E-501 – The new 208V, 3-phase electric service shall terminate in a pullbox in the storage room and safe-off wires. The new distribution related to the renovation work at Parent's Hall is a future/separate project at a later date.
3. Lighting in corridors, vestibules and open floor areas at the non-theater locations will be controlled via time clock, contactor and override switches for each floor. Offices, storage rooms, classrooms, etc. are provided with stand-alone control and dimming switches including vacancy/occupancy sensors type switches. These are separate from the theater lighting control systems.

H. Fire Alarm

1. Sheet FA-301 – note 16 – the campus fire alarm vendor is Open Systems Metro, not AFA Protection Systems.

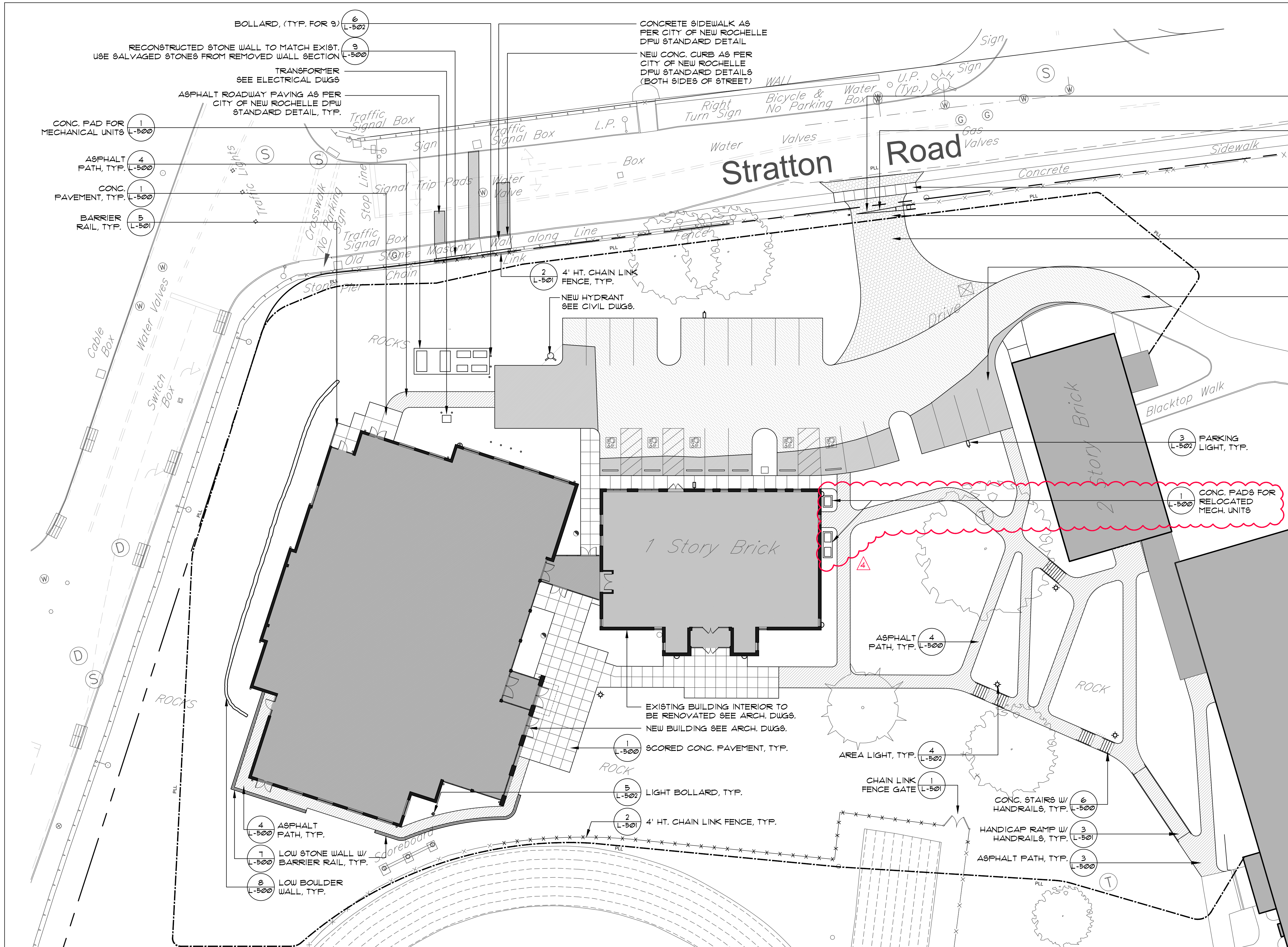
Attachments:

- AIA Document A201-2017 General Conditions and Exhibit A – Article 11 Insurance
- Revised sheet L-200: Location of condenser units.
- Sketch SKA-01: Clarification to window tags.
- Revised sheet A-353: Clarification to exterior finish
- Specification Section 10 50 30 Canopies

End of Addendum No. 4

PETER GISOLFI ASSOCIATES

566 Warburton Avenue	Architects
Hastings-on-Hudson NY 10706	Landscape Architects
914 478-3677 914 478-1600 fax	Interior Architects



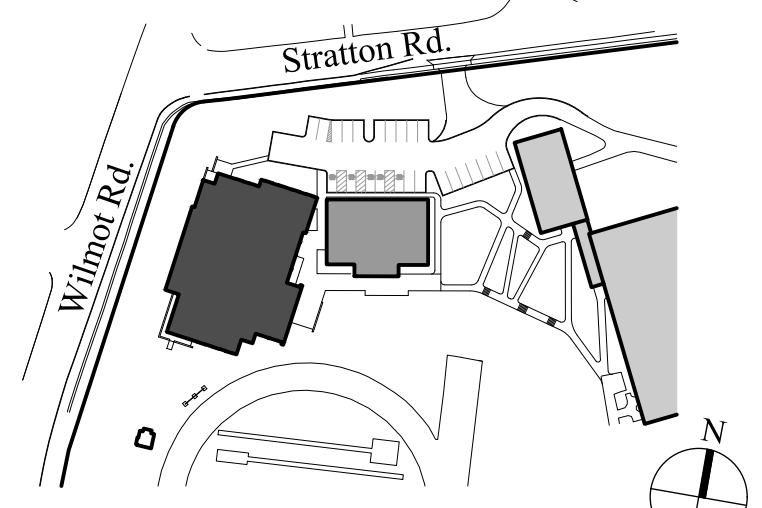
- "DO NOT ENTER EMERGENCY ACCESS ONLY" SIGN ON GATE
- EMERGENCY ACCESS LIFT GATE W/ KNOX BOX FOR CITY FIRE ACCESS KEY
- REINFORCED 8" THICK CONCRETE SIDEWALK AS PER CITY OF NEW ROCHELLE DPW STANDARD DETAIL
- EMERGENCY ONLY ACCESS
- PLASTIC GRASS PAVERS, TYP. MAX. LOADING CAPACITY 15,940 psi WHEN FILLED W/ SAND
- FULL DEPTH ASPHALT PAVEMENT, TYP.
- ASPHALT OVERFOUR, TYP.

GENERAL NOTES

- THE CONTRACTOR SHALL VERIFY ALL FIELD CONDITIONS AND FAMILIARIZE THEMSELVES WITH THE SITE PRIOR TO COMMENCEMENT OF WORK. ACTUAL FIELD CONDITIONS MAY VARY FROM LAYOUT, DIMENSIONS AND EXISTING GRADES AS SHOWN ON THE PLANS. THE CONTRACTOR SHALL PERFORM THE WORK IN ACCORDANCE WITH EXISTING FIELD CONDITIONS. NOTIFY THE OWNER'S REPRESENTATIVE IN WRITING OF ANY DISCREPANCIES PRIOR TO CONTINUING WORK.
- THE CONTRACTOR SHALL SECURE THE WORK AREA WITH SPECIFIED BARRIERS AND FENCING AND MAINTAIN A SAFE AND SECURE CONSTRUCTION SITE.
- PEDESTRIAN AND VEHICULAR TRAFFIC ON ADJACENT ROADS AND SIDEWALKS SHALL BE MAINTAINED DURING CONSTRUCTION.
- CONTRACTOR SHALL TAKE ALL NECESSARY PRECAUTIONS TO PREVENT DAMAGE OR INTERRUPTION TO EXISTING UTILITY SERVICE. ANY DAMAGE OR INTERRUPTION TO EXISTING UTILITY SERVICE SHALL BE RESTORED BY THE CONTRACTOR AT NO EXPENSE TO THE OWNER.
- THE CONTRACTOR SHALL COMPLY WITH ALL APPLICABLE AGENCIES AND UTILITY COMPANIES HAVING JURISDICTION (I.E. DEPARTMENT OF TRANSPORTATION, FIRE DEPARTMENT, DEPARTMENT OF ENVIRONMENTAL PROTECTION TELEPHONE, SEWER, GAS, ETC.) OBTAIN PERMITS AND PAY ANY FEES ASSOCIATED WITH WORK OF THIS PROJECT. SEE BIDDING GUIDE SCOPE OF WORK. WORK NOT INCLUDED FOR EXCLUSIONS.
- IT IS ANTICIPATED THAT VARIOUS TYPES OF WORK FOR THIS CONTRACT WILL BE PERFORMED SIMULTANEOUSLY. THE CONTRACTOR SHALL BE RESPONSIBLE FOR COORDINATING WORK BETWEEN SUBCONTRACTORS AND UTILITY COMPANIES TO ENSURE COMPLETION OF HIS WORK IN A TIMELY AND WORKMAN LIKE MANNER.
- THE CONTRACTOR SHALL PERFORM ALL WORK WITH CARE TO ENSURE MATERIALS TO REMAIN SHALL NOT BE DAMAGED. ANY DAMAGE TO MATERIAL TO REMAIN SHALL BE REPAIRED OR REPLACED TO THE SATISFACTION OF THE OWNER AND PAID FOR BY THE CONTRACTOR.
- REMOVE AND DISPOSE OF ALL ITEMS DESIGNATED AS REMOVALS OFF-SITE IN A LEGAL MANNER. ALL EXISTING INLETS, BASINS AND CONNECTIONS WITHIN THE PROJECT LIMIT SHALL BE CLEANED AND CLEARED TO THE SATISFACTION OF THE OWNER'S REPRESENTATIVE.
- UPON COMPLETION OF THE WORK THE CONTRACTOR SHALL RESTORE ALL "UNIMPROVED" AREAS UTILIZED FOR SITE ACCESS, STOCKPIILING, CONSTRUCTION TRAILERS ETC. TO SERVICEABLE AND SAFE CONDITIONS AND TO THE SATISFACTION OF THE OWNER'S REPRESENTATIVE.

LEGEND

	PROPERTY LINE		FULL DEPTH ASPHALT PAVEMENT
	PROJECT LIMIT LINE		ASPHALT OVERFOUR
	CONCRETE CURB		PLASTIC GRASS PAVERS
	CONCRETE RETAINING WALL W/ BARRIER RAIL		PARKING LIGHT
	DECORATIVE BARRIER RAIL		AREA LIGHT
	CHAIN LINK FENCE		LIGHT BOLLARD
	CONCRETE PAVEMENT WITH EXPANSION JOINT		
	ASPHALT PATH		



Key Plan Not to Scale

9.	6/22/2021	BID ADDENDUM 4	
8.	6/09/2021	BID ADDENDUM 1	
7.	6/01/2021	ISSUED FOR BID	
6.	5/07/2021	RE-ISSUED FOR BUILDING PERMIT REVIEW	
5.	2/01/2021	ISSUED FOR BUILDING PERMIT REVIEW	
4.	10/14/2020	ISSUED FOR PLANNING BOARD REVIEW	
3.	9/23/2020	RESUBMITTED FOR ZONING REVIEW	
2.	8/28/2020	ISSUED FOR PRELIMINARY DOB REVIEW	
1.	1/10/2020	ISSUED FOR PRELIMINARY DOB REVIEW	
No.	Date	Revision/Submission	

STRUCTURAL & CIVIL ENGINEER
DOMINICK R PILLA
ASSOCIATES, P.C.
143 MAIN STREET
NYACK, NY 10960
845-727-7793

MEP ENGINEER
JMV CONSULTING
ENGINEERING, P.C.
37 W. 39 STREET, STE 703
NEW YORK, NY 10018
212-852-9855

ROOFING CONSULTANT
WATSKY ASSOCIATES
20 MADISON AVENUE
VALHALLA, NY 10595
914-948-3450

Project Title
IONA PREPARATORY SCHOOL
VERNI CENTER FOR PERFORMING ARTS

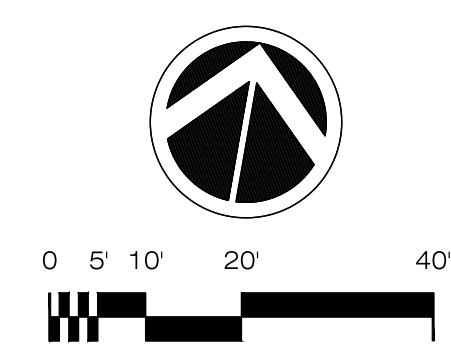
Project Address
IONA PREPARATORY SCHOOL
255 Wilmot Road
New Rochelle, NY 10804

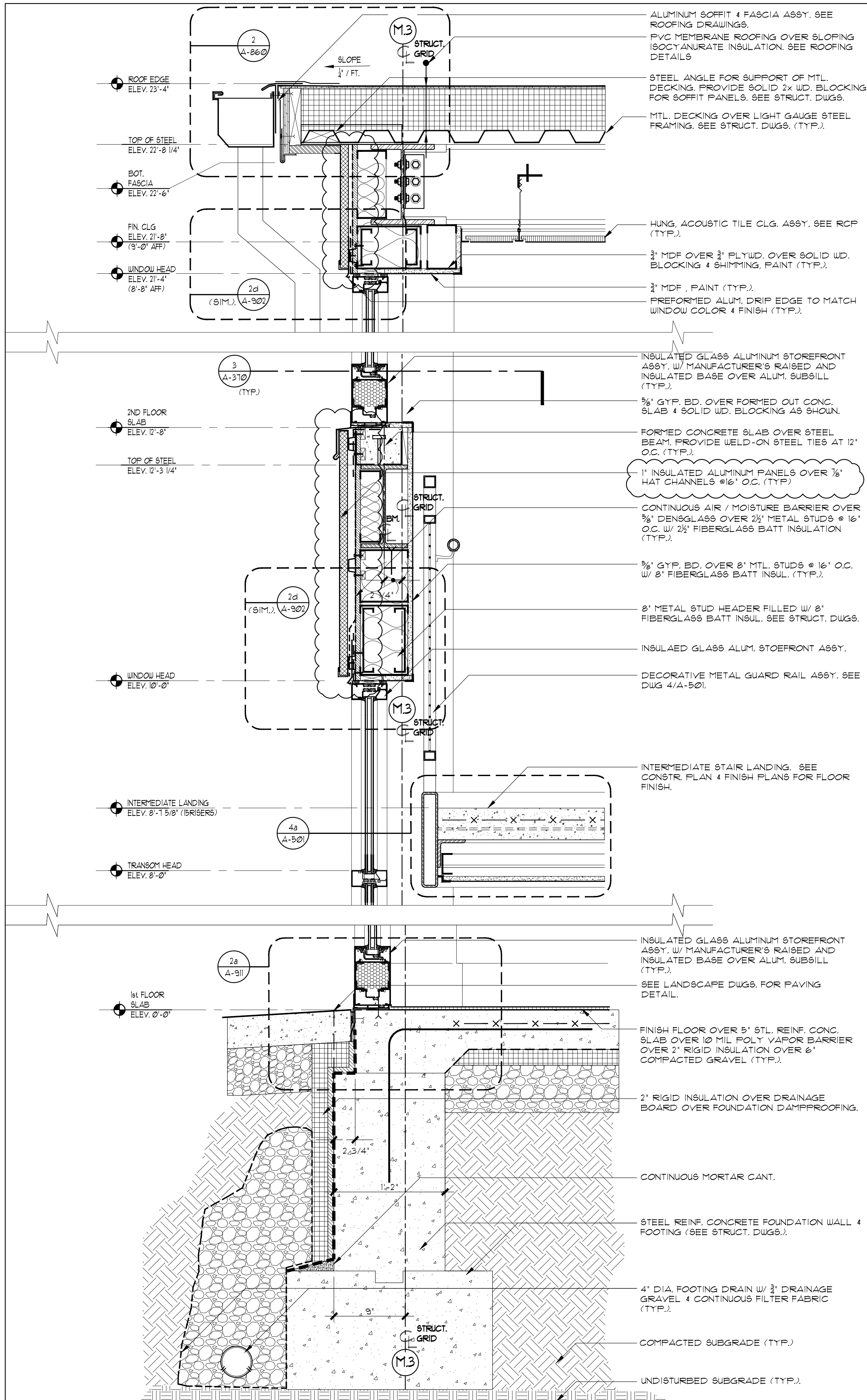
MATERIALS PLAN

Scale	Job No.	Date	Drawing No.
1" = 20'-0"	1618	04/03/2019	L-200
Drawn	Checked	Approved	
RW	RW	MT	

Peter Gisolfi Associates, LLP
Architects, Landscape Architects
566 Warburton Avenue
Hastings on Hudson, NY 10706
914 478 3677

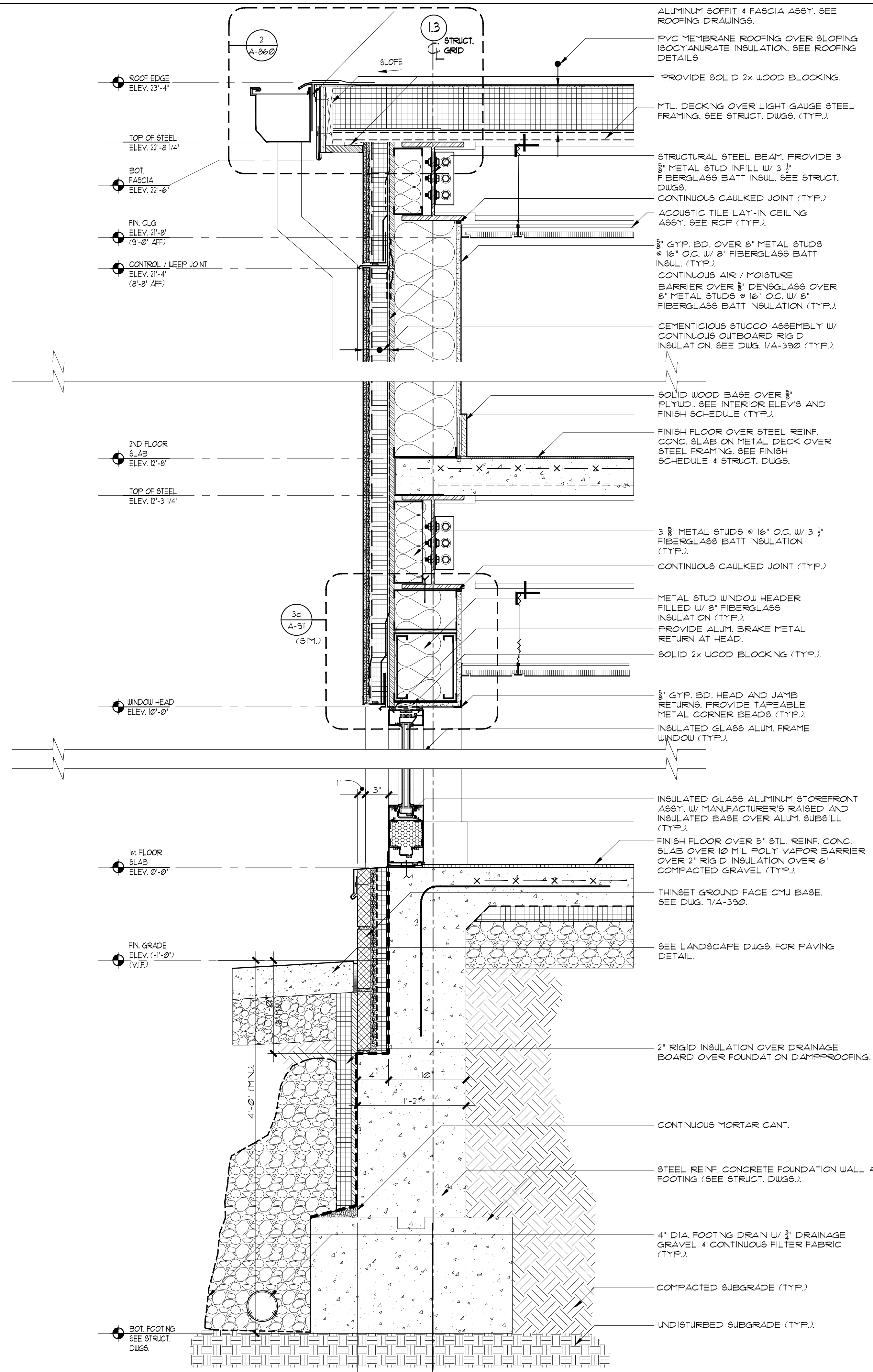
PETER GISOLFI ASSOCIATES





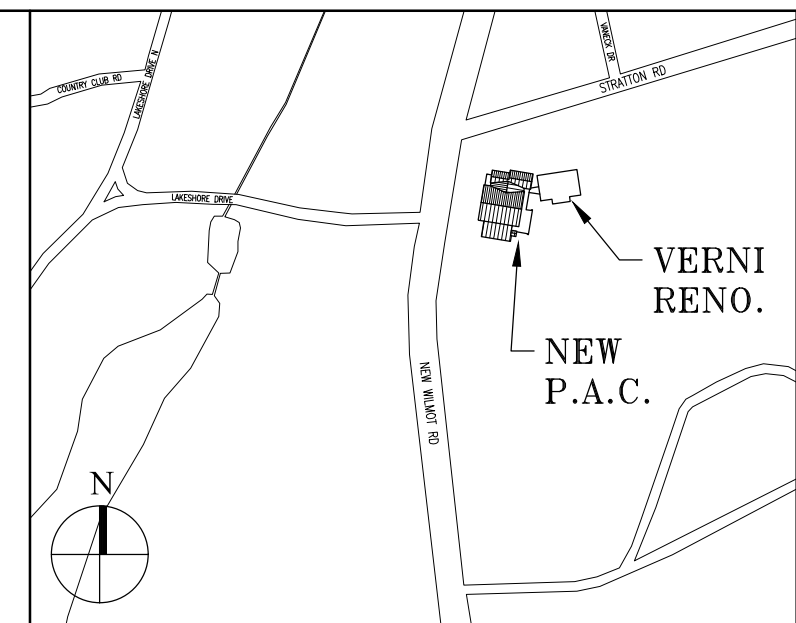
1 EXTERIOR WALL SECTION

SCALE: 1/2"=1'-0"



2 EXTERIOR WALL SECTION

SCALE: 1/2"=1'-0"



Key Plan (not to scale)

9.	6/22/2021	BID ADDENDUM 4
8.	6/09/2021	BID ADDENDUM 1
7.	6/01/2021	ISSUED FOR BID
6.	5/07/2021	RE-ISSUED FOR BUILDING PERMIT REVIEW
5.	2/01/2021	RE-SUBMITTED FOR ZONING REVIEW
4.	10/14/2020	ISSUED FOR PLANNING BOARD REVIEW
3.	9/23/2020	RE-SUBMITTED FOR ZONING REVIEW
2.	8/28/2020	ISSUED FOR PRELIMINARY DOB REVIEW
1.	1/10/2020	ISSUED FOR DD ESTIMATE
No.	Date	Revision/Submission
STRUCTURAL & SITE CIVIL ENGINEER		
DOMINICK R PILLA ASSOCIATES, P.C. 143 MAIN STREET NYACK, NY 10960 845-727-7793		
MEP ENGINEER		ROOFING CONSULTANT
JMV CONSULTING ENGINEERING, P.C. 37 W. 39 STREET, STE 703 NEW YORK, NY 10018 212-852-9855		WATSKY ASSOCIATES 20 MADISON AVENUE VALHALLA, NY 10595 914-948-3450

Stamp

Project Title
IONA PREPARATORY SCHOOL
ADDITION AND ALTERATION TO THE
PAUL VERNI FINE ARTS CENTER

Project Address
IONA PREPARATORY SCHOOL
255 Wilmot Road
New Rochelle, NY 10804

Drawing Title
EXTERIOR WALL SECTIONS

Scale	Job No.	Date	Drawing No.
	1618	04/03/2019	A-353

Drawn

Peter Gisolfi Associates
Architects Landscape Architects, LLP
566 Warburton Avenue
Hastings on Hudson, NY 10706
914 478 3877

PETER GISOLFI ASSOCIATES

SECTION 10 50 30

CANOPIES

PART 1-GENERAL

1.1 SUMMARY

- A. Section Includes:
 - 1. Building supported metal awnings including framing, enclosure, and attachment hardware.
- B. Related Sections:
 - 1. Division 1: Administrative, procedural, and temporary work requirements.
 - 2. Division 5: Metal Fabrication
 - 3. Division 6: Rough Carpentry

1.2 REFERENCES

- A. Aluminum Association (AA) DAF 45 - Designation System for Aluminum Finishes
- B. American Architectural Manufacturers Association (AAMA)
 - 1. 2603 - Voluntary Specification, Performance Requirements and Test Procedures for Pigmented Organic Coatings on Architectural Extrusions and Panels.
- C. American Society of Civil Engineers (ASCE) 7 - Minimum Design Loads for Buildings and Other Structures.
- D. ASTM International (ASTM)
 - 1. B221 - Standard Specification for Aluminum and Aluminum-Alloy Extruded Bars, Rods, Wire, Profiles, and Tubes.
 - 2. B429 - Standard Specification for Aluminum-Alloy Extruded Pipe and Tube.

1.3 SYSTEM DESCRIPTION

- A. Design Requirements: Design awning system to withstand:
 - 1. Standards for wind pressure, snow load, and drifting snow load in accordance with current adopted form of the Uniform Construction code or accepted requirements of local municipality.

1.4 SUBMITTALS

- A. Submittals for Review:
 - 1. Shop Drawings: Indicate system components, dimensions, attachments, and accessories.

2. Samples:
 - a. 3 x 3inch coating samples in specified color.
 - b. 6inch decking/ siding samples showing profile and finish.

1.5 QUALITY ASSURANCE

- A. Installer Qualifications: Minimum 5 years experience in installation of MASA products.
- B. Mockup:
 1. Provide mockup of awning system including all framing members, enclosure materials, and attachments at location selected by architect.)

PART 2-PRODUCTS

2.1 MANUFACTURER

- A. Contract Documents are based on:
MASA Architectural Canopies - Extrudeck Series
250 Shelton Road, Piscataway, NJ 08854
800-761-7446
www.architecturalcanopies.com.

2.2 MATERIALS

- A. Aluminum Extrusions:
 1. ASTM B221& ASTM B429 6063-T5 alloy and temper.
- B. Hardware:
 1. All fasteners shall be stainless steel or hot dip galvanized for corrosion resistance.

2.3 COMPONENTS

- A. Framing:
 1. Type: Extruded aluminum "J" channel fascia
 2. Size: 8" x .125"
- B. Canopy Supports: Extruded Aluminum Canopy Support "I" Beam
- C. Decking: 3" x 6" x .090" Interlocking Extruded aluminum flat soffit decking (as selected from MASA decking options)
- D. Attachment; 1.050" diameter steel hanger rod, finished to match canopy color
- E. Custom Fascia Profiles: As shown on drawings
- F. Other Components: other components as indicated or as required for system attachment and performance.

2.4 ACCESSORIES

- A. Anchors and Fasteners: Stainless steel or hot dip galvanized and corrosion resistant

2.5 FABRICATION

- A. Fabricate canopy system in accordance with approved Shop Drawings.

2.6 FINISHES

A. Aluminum:

- A.1 Pre- Treatment: Pre-treat to ASTM D1730 type B, Method 5 using a multi stage chromate process or an approved chrome- free pretreatment process approved by powder coat manufacturer for optimized weather resistance.

- 1. Type AAMA 2603 Thermosetting Polyester Resin-based Powder
- 2. Source: Tiger Drylac powder coating or equivalent.
- 3. Color: (color) to be selected by architect from MASA's standard 5 colors

Aluminum or Steel

- 1. AAMA 2605, Fluoropolymer coating containing minimum 70% PVDF resins
- 2. Source: Duranar by PPG Industries, Inc.
- 3. Color: (color) to be selected by architect from MASA's full color range

PART 3-EXECUTION

3.1 FIELD DIMENSIONS

- A. Field verify dimensions of supporting structure and any openings at site of installation prior to fabrication.

3.2 INSTALLATION

- A. Install in accordance with manufacturer's instructions and approved Shop Drawings.
- B. Install components plumb and level, in proper plane, free from warp and twist.
- C. Anchor system to building components; provide adequate clearance for movement caused by thermal expansion and contraction and wind loads.

3.3 ADJUSTING

- A. Touch up minor scratches and abrasions on finished surfaces to match original finish.

END OF SECTION