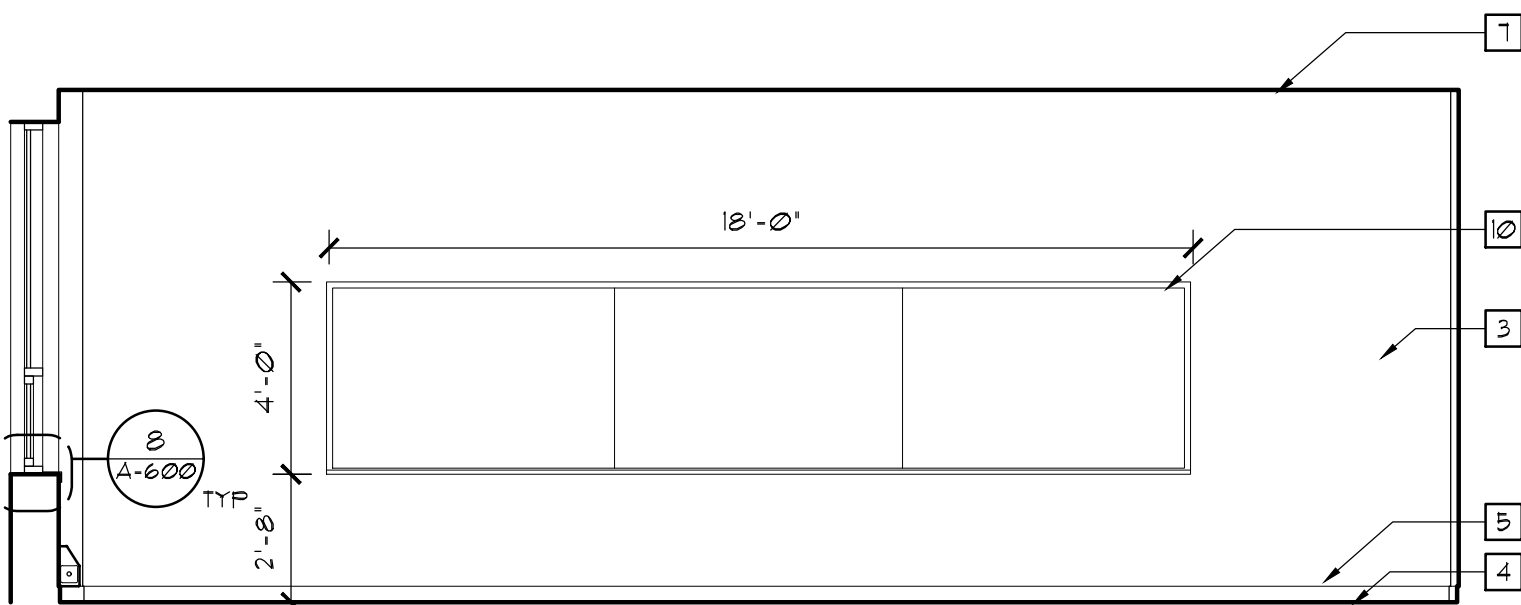
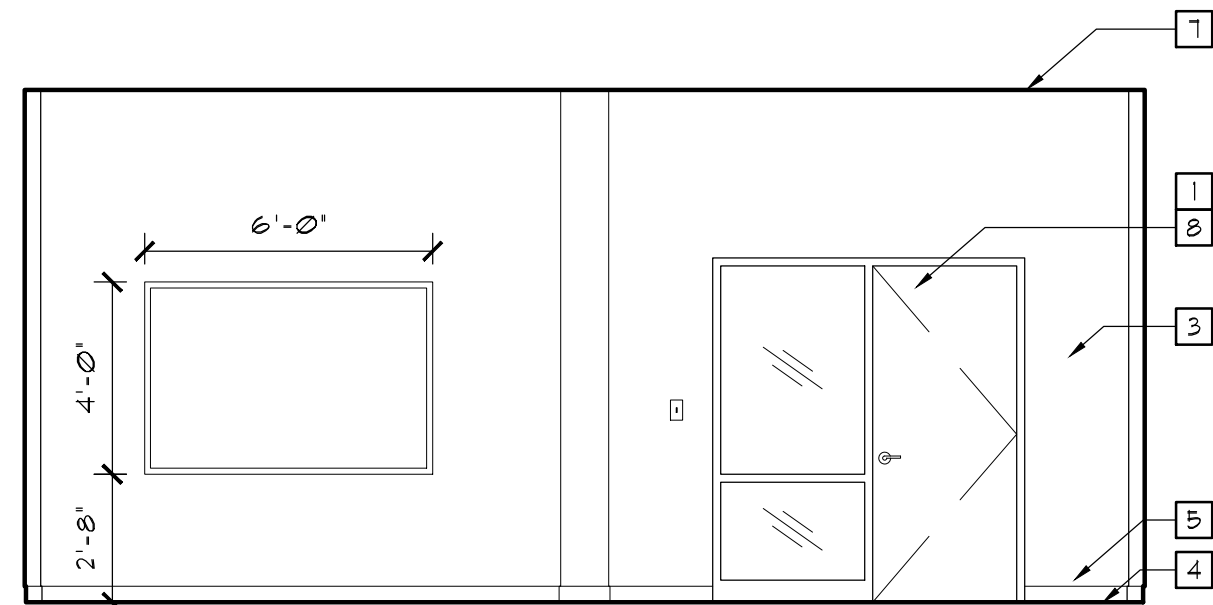


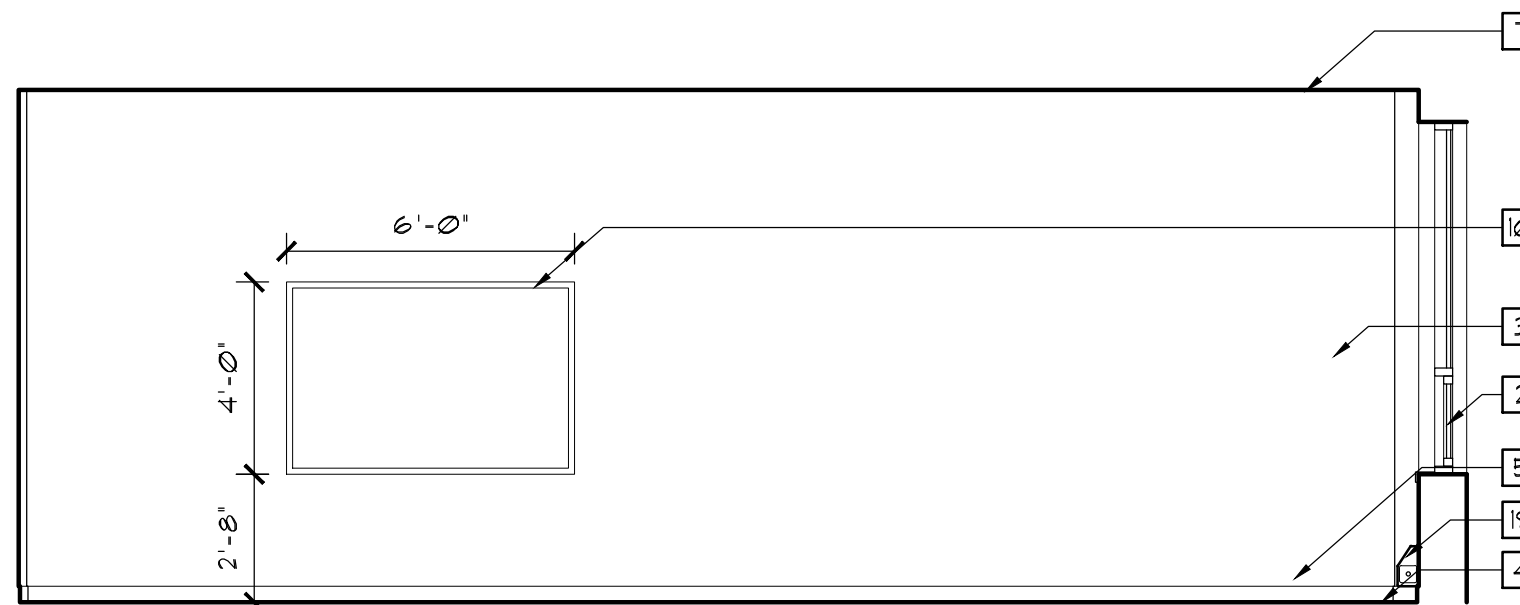
1 CLASSROOM 120
NORTH ELEVATION
SCALE: 1/4"=1'-0"



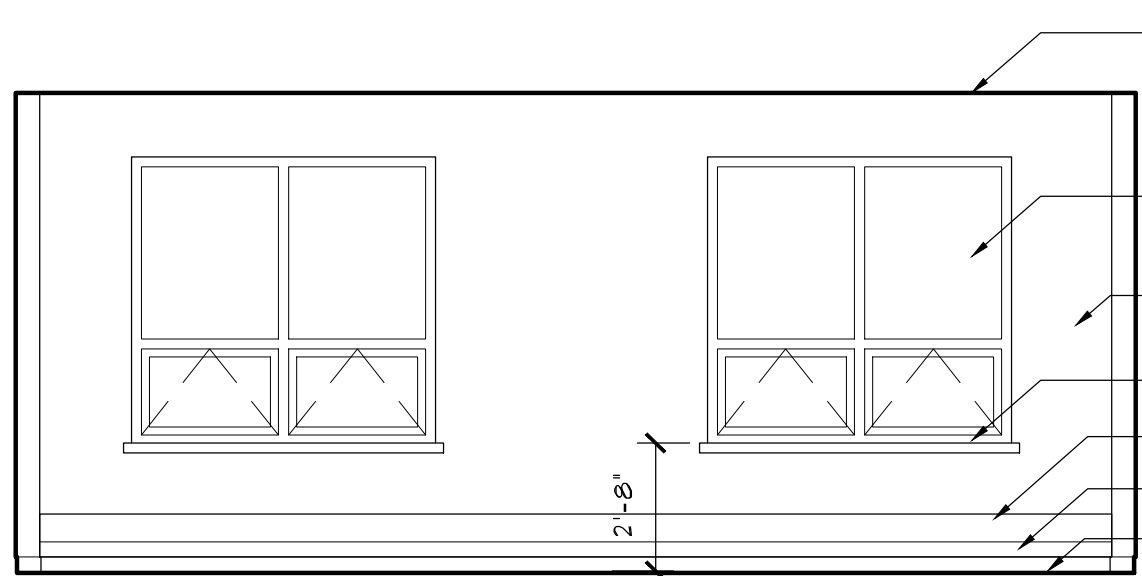
2 CLASSROOM 120
EAST ELEVATION
SCALE: 1/4"=1'-0"



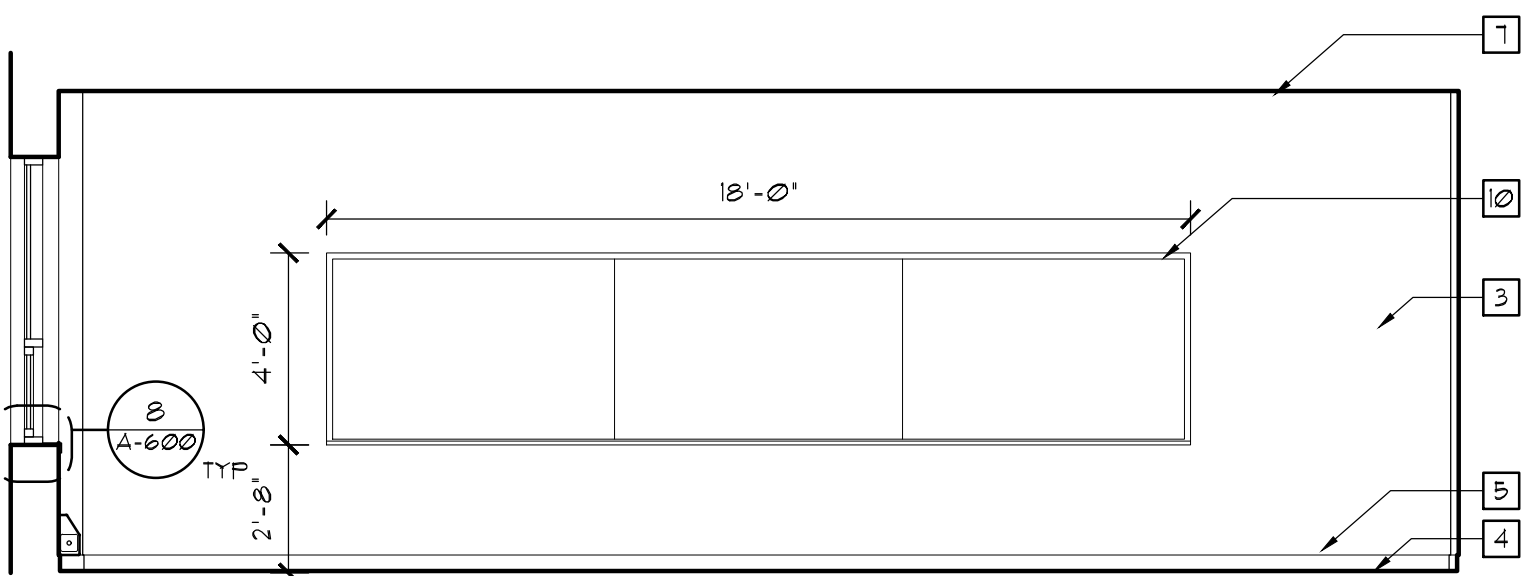
3 CLASSROOM 120
SOUTH ELEVATION
SCALE: 1/4"=1'-0"



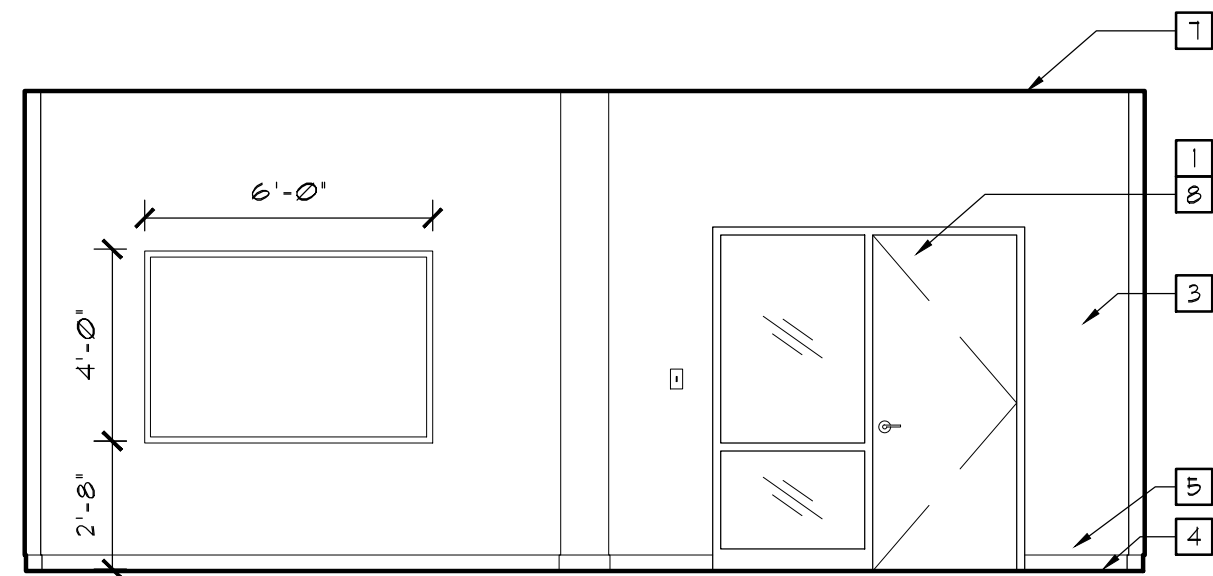
4 CLASSROOM 120
WEST ELEVATION
SCALE: 1/4"=1'-0"



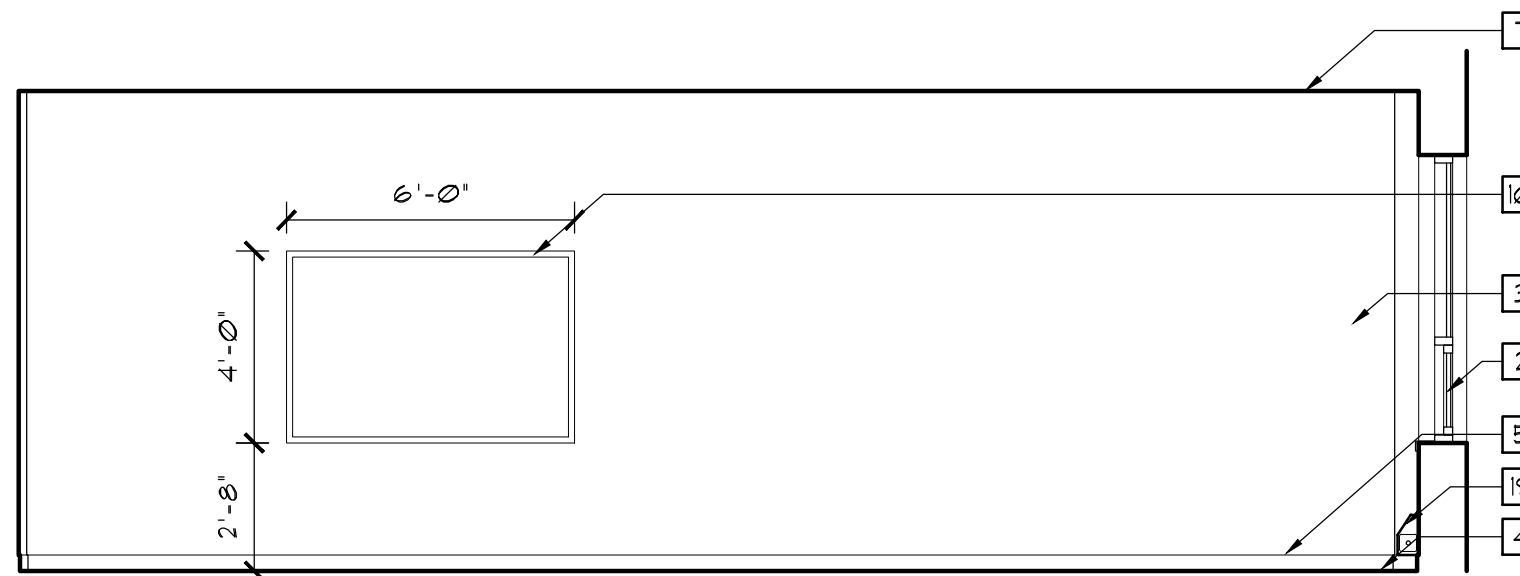
5 TYPICAL CLASSROOM 2nd FLOOR
NORTH ELEVATION
SCALE: 1/4"=1'-0"



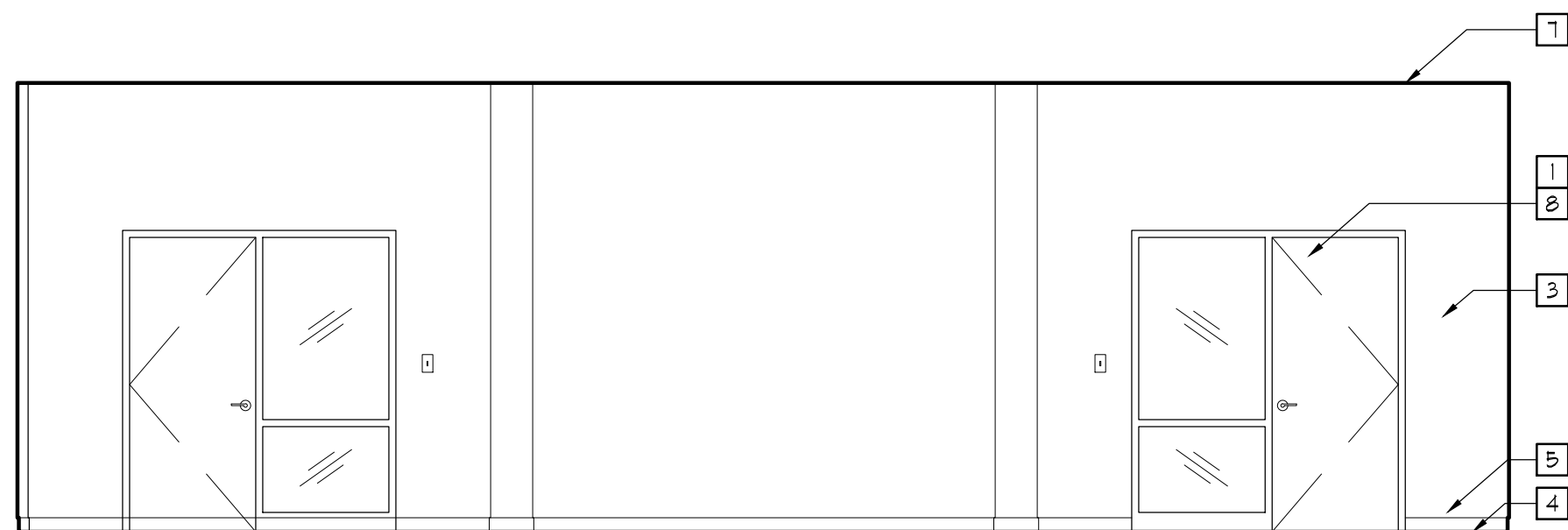
6 TYPICAL CLASSROOM 2nd FLOOR
EAST ELEVATION
SCALE: 1/4"=1'-0"



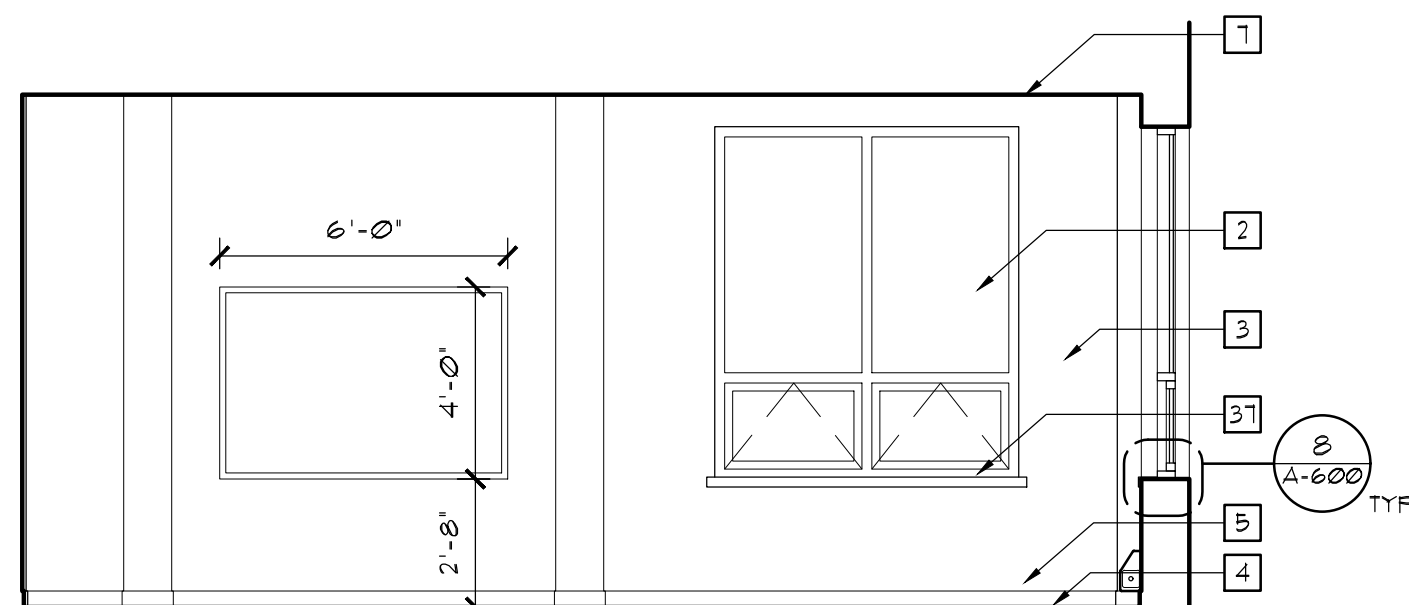
7 TYPICAL CLASSROOM 2nd FLOOR
SOUTH ELEVATION
SCALE: 1/4"=1'-0"



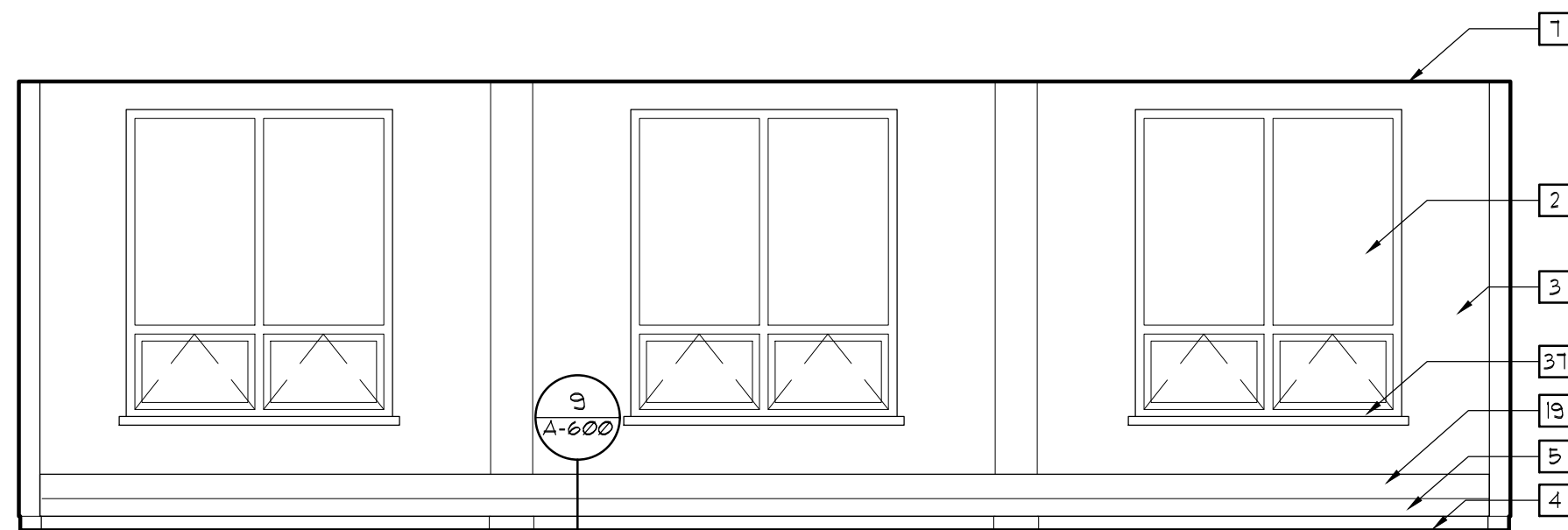
8 TYPICAL CLASSROOM 2nd FLOOR
WEST ELEVATION
SCALE: 1/4"=1'-0"



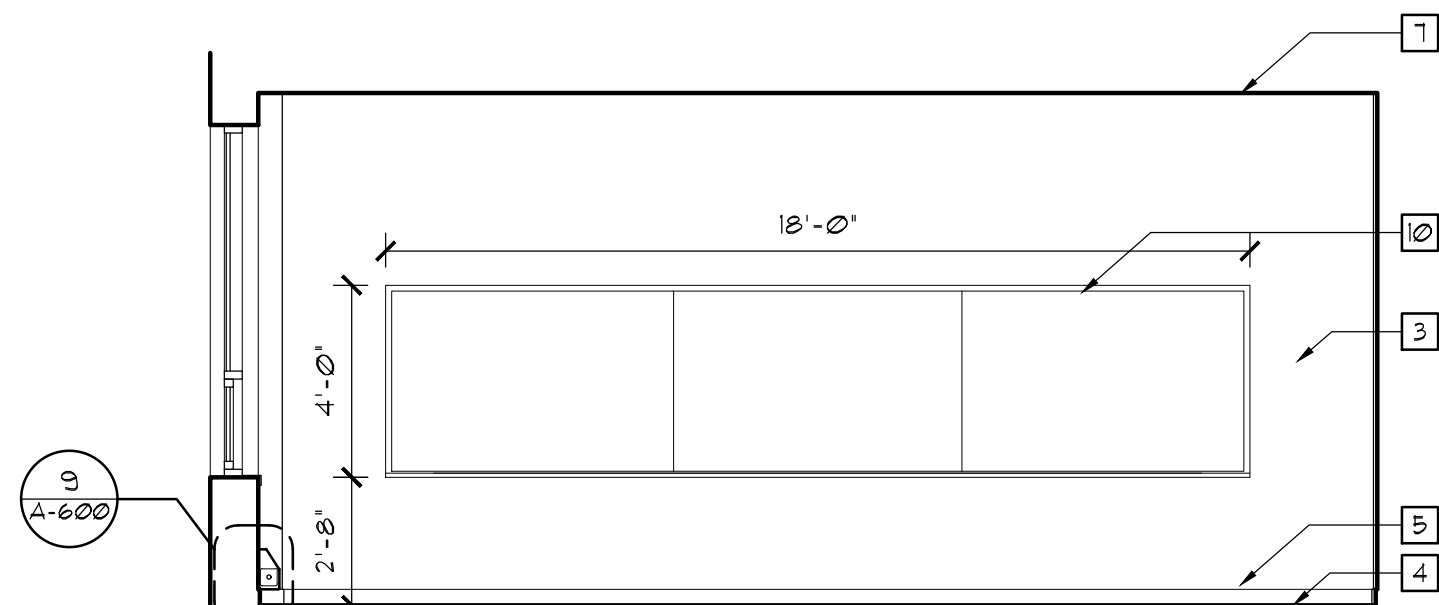
9 CLASSROOM 121
NORTH ELEVATION
SCALE: 1/4"=1'-0"



10 CLASSROOM 121
EAST ELEVATION
SCALE: 1/4"=1'-0"



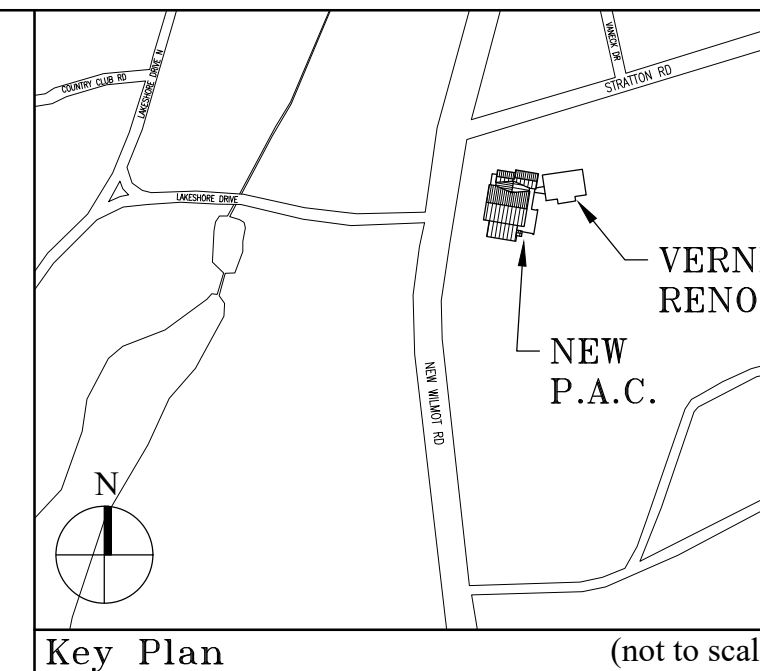
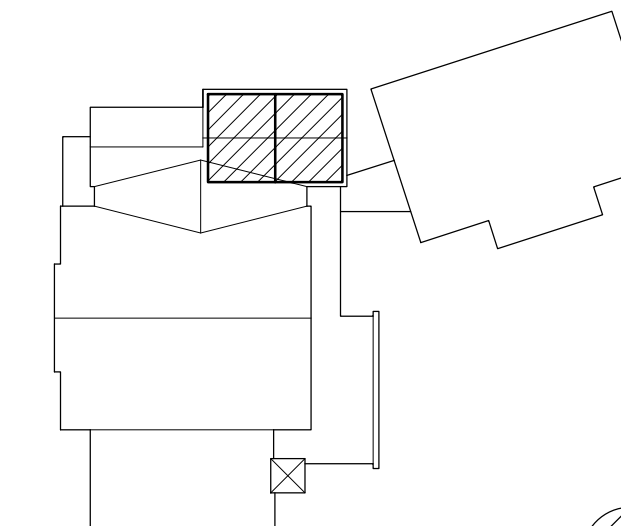
11 CLASSROOM 121
SOUTH ELEVATION
SCALE: 1/4"=1'-0"



12 CLASSROOM 121
WEST ELEVATION
SCALE: 1/4"=1'-0"

NOTES:

- 1 NEW DOOR SEE SCHEDULE
- 2 NEW WINDOW, SEE SCHEDULE
- 3 PAINTED GYP. BD. SEE FINISH SCHEDULE
- 4 NEW FLOORING, SEE FINISH SCHEDULE
- 5 BASE, SEE FINISH SCHEDULE
- 6 MDF BAND SEE FINISH SCHEDULE
- 7 NEW CEILING, SEE RCP
- 8 SEE BORROWED LITE SCHEDULE
- 9 STAIR, SEE DETAIL
- 10 TRIMMED WHITEBOARD (SEE SPECS)
- 11 GYP. BD. SOFFIT (SEE RCP)
- 12 TRIMMED TACK BOARD (SEE SPECS)
- 13 DRINKING FOUNTAIN, (SEE PLUMBING DUGS)
- 14 STRUCTURAL ELEMENTS (SEE STRUCT. DUGS)
- 15 WALL BUILD OUT FOR DOOR
- 16 DUCTWORK, SEE MEP DUGS
- 17 TILE BASE (SEE FINISH SCHEDULE)
- 18 PORCELAIN TILE (SEE FINISH SCHEDULE)
- 19 FIN TUBE (SEE MEP DUGS)
- 20 HOLLOW METAL FRAME OPENING
- 21 ELEVATOR DOOR (SEE SPECS)
- 22 DROPPED GYP. CEILING (SEE RCP)
- 23 BRICK WALL (SEE SPECS)
- 24 WOOD CASING (SEE DETAILS)
- 25 HAND RAIL (SEE DETAILS ON A-505)
- 26 SINK (SEE MEP DUGS)
- 27 VENTED BASE (SEE DETLS. & FINISH SCHEDULE)
- 28 PAINTED MDF (SEE SPECS & DETAILS)
- 29 MILLWORK (SEE A-600 & SPECS)
- 30 EXIST. WINDOW, PROTECT & CLEAN AS NEEDED
- 31 EXIST. SKYLIGHT, PATCH DRYWALL, SURROUND
- 32 EXIST. DOOR, PROTECT & CLEAN AS NEEDED
- 33 EXPANSION JOINT BETW. BUILDINGS, SEE A-305
- 34 SEE A-305 FOR CARPET VINYL TRANSITIONS
- 35 STEEL COLUMN, PAINT
- 36 ACOUSTICAL WALL PANELS
- 37 WINDOW SILL, SEE MILLWORK DETAIL
- 38 FIRE EXTINGUISHER AND CABINET
- 39 SMOKE BAFLE AROUND LOBBY STAIR
- 40 THEATER AV EQUIPMENT
- 41 THEATER RIGGING AND LIGHTING SYSTEM
- 42 LIGHT FIXTURE, SEE RCP & FIXTURE SCHEDULE
- 43 1/2" THICK PLYWOOD FOR EQUIPMENT PANELS
- 44 SIGNAGE (BY OWNER)
- 45 MASONRY INFILL AT WINDOW, PAINT, SEE PLANS
- 46 WALL OPENINGS FOR MECHANICAL DUCTS
- 47 SPRAY-ON ACOUSTICAL INSUL. AT WALLS & CLG.
- 48 MECHANICAL GRILLE, SEE MECHANICAL DUGS
- 49 BLANK OFF OPENING WITH SHEETMETAL
- 50 OUTLINE OF MECHANICAL UNIT, SEE MEP



Key Plan (not to scale)

7.	6/01/2021	ISSUED FOR BID
6.	5/07/2021	RE-ISSUED FOR BUILDING PERMIT REVIEW
5.	2/01/2021	ISSUED FOR BUILDING PERMIT REVIEW
4.	10/14/2020	ISSUED FOR PLANNING BOARD REVIEW
3.	9/23/2020	RESUBMITTED FOR ZONING REVIEW
2.	8/28/2020	ISSUED FOR PRELIMINARY DOB REVIEW
1.	1/10/2020	ISSUED FOR DD ESTIMATE
No.	Date	Revision/Submission
STRUCTURAL & SITE CIVIL ENGINEER		
DOMINICK R PILLA		
ASSOCIATES, P.C.		
143 MAIN STREET		
NYACK, NY 10960		
845-727-7793		
MEP ENGINEER		ROOFING CONSULTANT
JMV CONSULTING		WATSKY ASSOCIATES
ENGINEERING, P.C.		20 MADISON AVENUE
37 W. 39 STREET, STE 703		VALHALLA, NY 10595
NEW YORK, NY 10018		914-948-3450
212-852-9855		

Stamp

Project Title
IONA PREPARATORY SCHOOL
ADDITION AND ALTERATION TO THE
PAUL VERNI FINE ARTS CENTER

Project Address
IONA PREPARATORY SCHOOL
255 Wilmot Road
New Rochelle, NY 10804

Drawing Title
INTERIOR ELEVATIONS
TYPICAL CLASSROOMS

Scale	Job No.	Date	Drawing No.
AS NOTED	1618	04/03/2019	A-407

Drawn
JPE

Peter Gisolfi Associates
Architects Landscape Architects, LLP
566 Warburton Avenue
Hastings on Hudson, NY 10706
914 478 3677

PETER GISOLFI ASSOCIATES