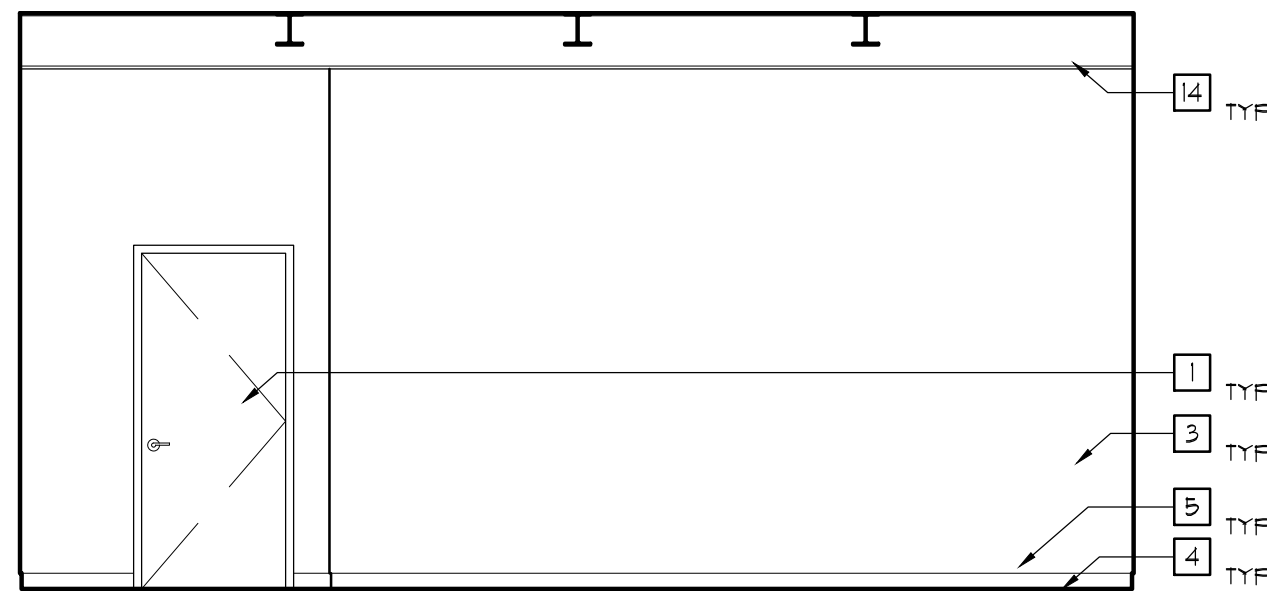


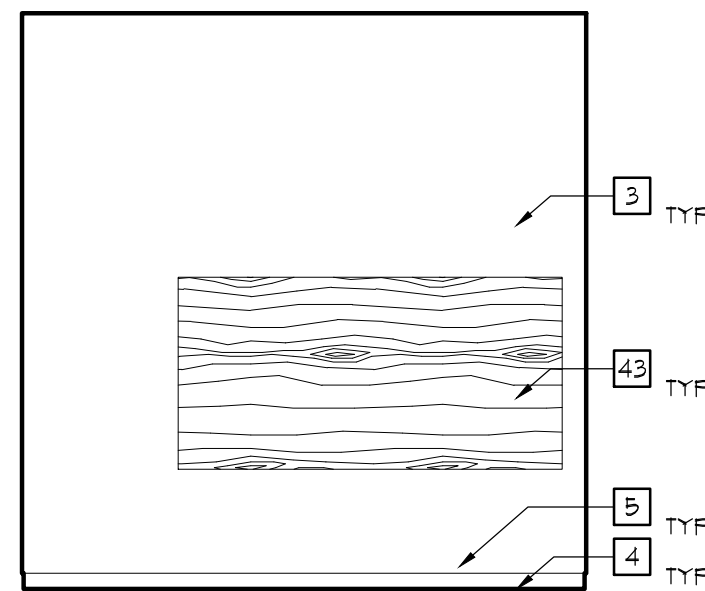
1 STORAGE (ROOM 125)  
NORTH ELEVATION

SCALE: 1/4"=1'-0"



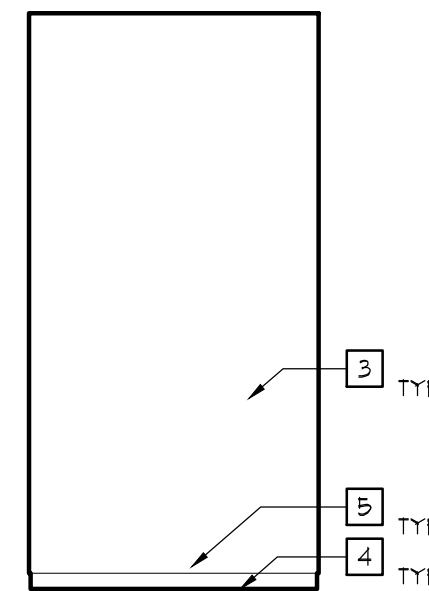
2 STORAGE (ROOM 125)  
EAST ELEVATION

SCALE: 1/4"=1'-0"



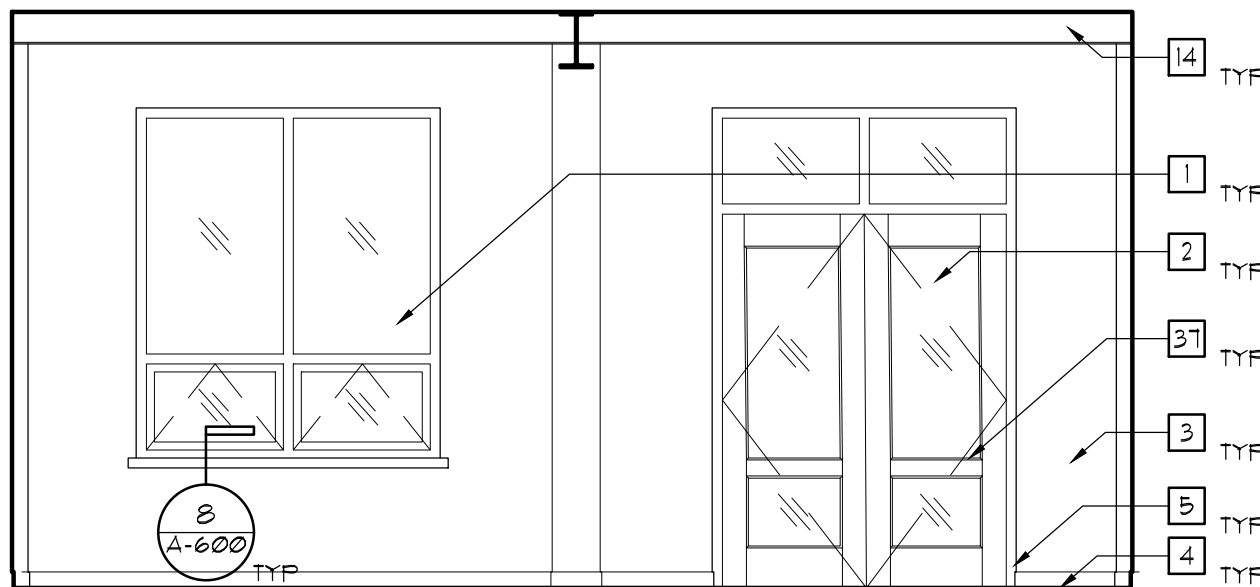
5 DIMMER (ROOM 126)  
NORTH ELEVATION

SCALE: 1/4"=1'-0"



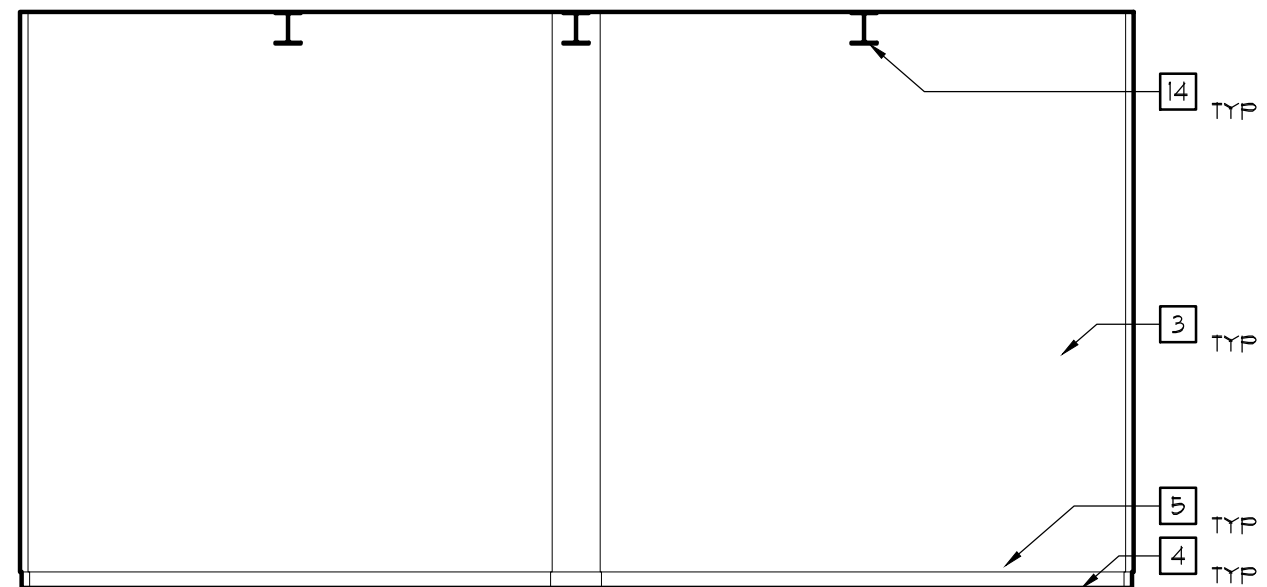
6 DIMMER (ROOM 126)  
EAST ELEVATION

SCALE: 1/4"=1'-0"



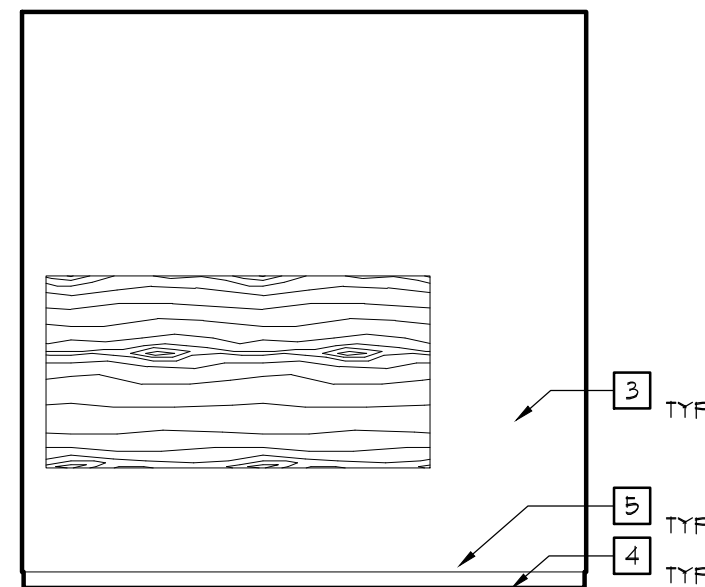
3 STORAGE (ROOM 125)  
SOUTH ELEVATION

SCALE: 1/4"=1'-0"



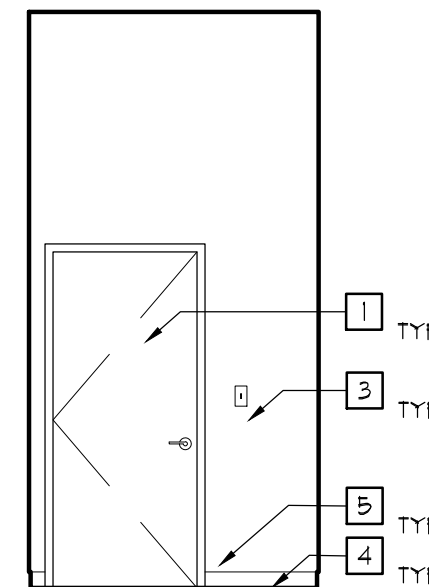
4 STORAGE (ROOM 125)  
WEST ELEVATION

SCALE: 1/4"=1'-0"



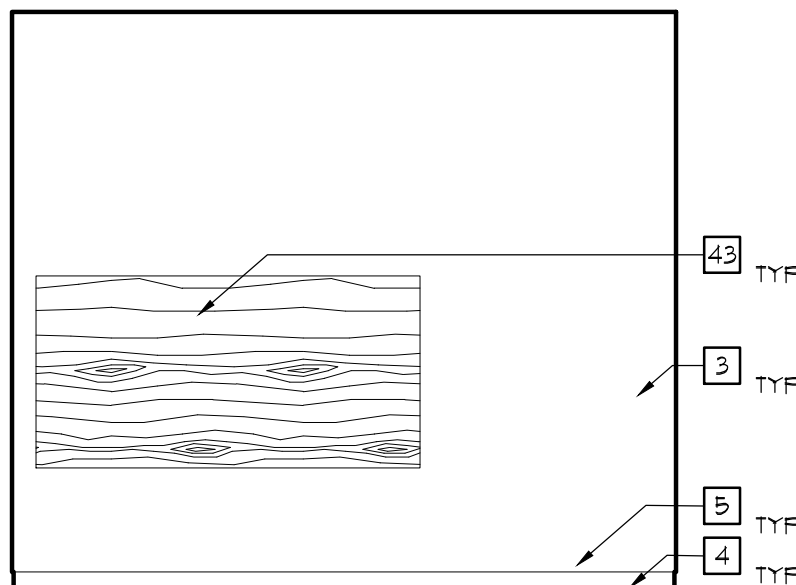
7 DIMMER (ROOM 126)  
SOUTH ELEVATION

SCALE: 1/4"=1'-0"



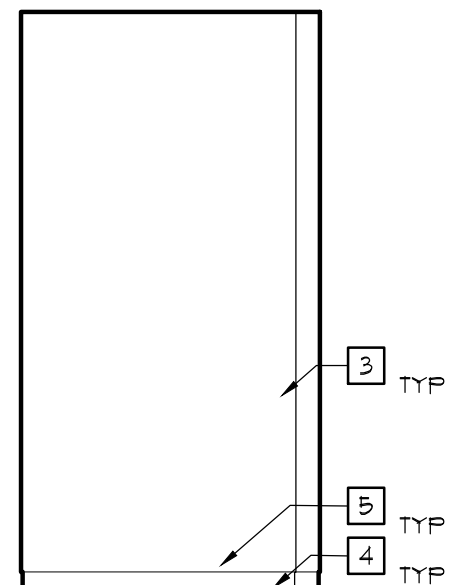
8 DIMMER (ROOM 126)  
WEST ELEVATION

SCALE: 1/4"=1'-0"



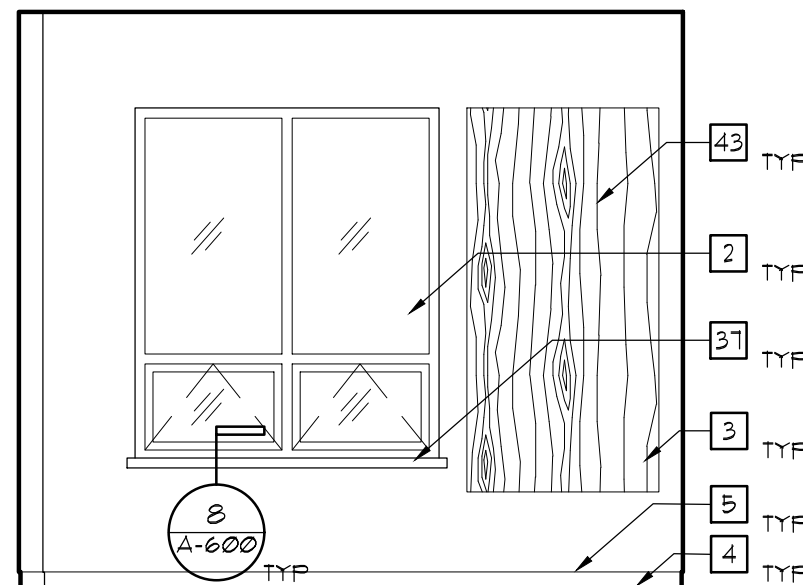
9 MECHANICAL (ROOM 127)  
SOUTH ELEVATION

SCALE: 1/4"=1'-0"



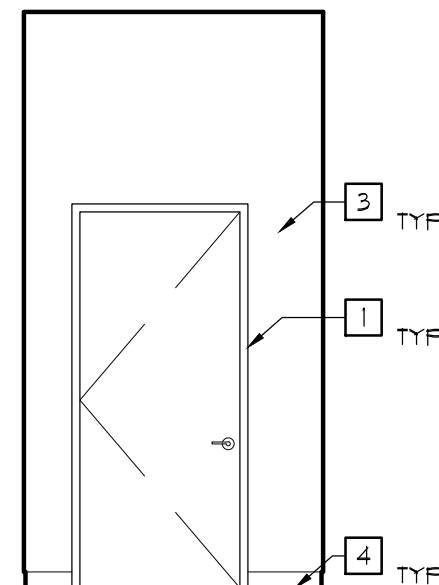
10 MECHANICAL (ROOM 127)  
WEST ELEVATION

SCALE: 1/4"=1'-0"



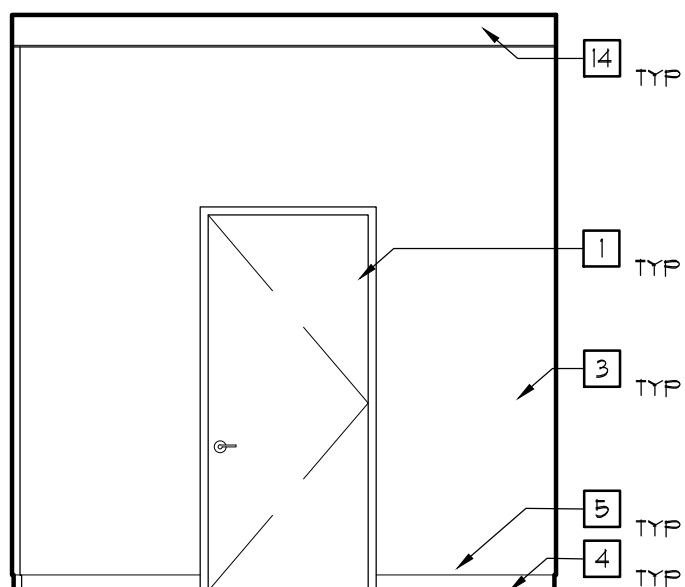
11 MECHANICAL (ROOM 127)  
NORTH ELEVATION

SCALE: 1/4"=1'-0"



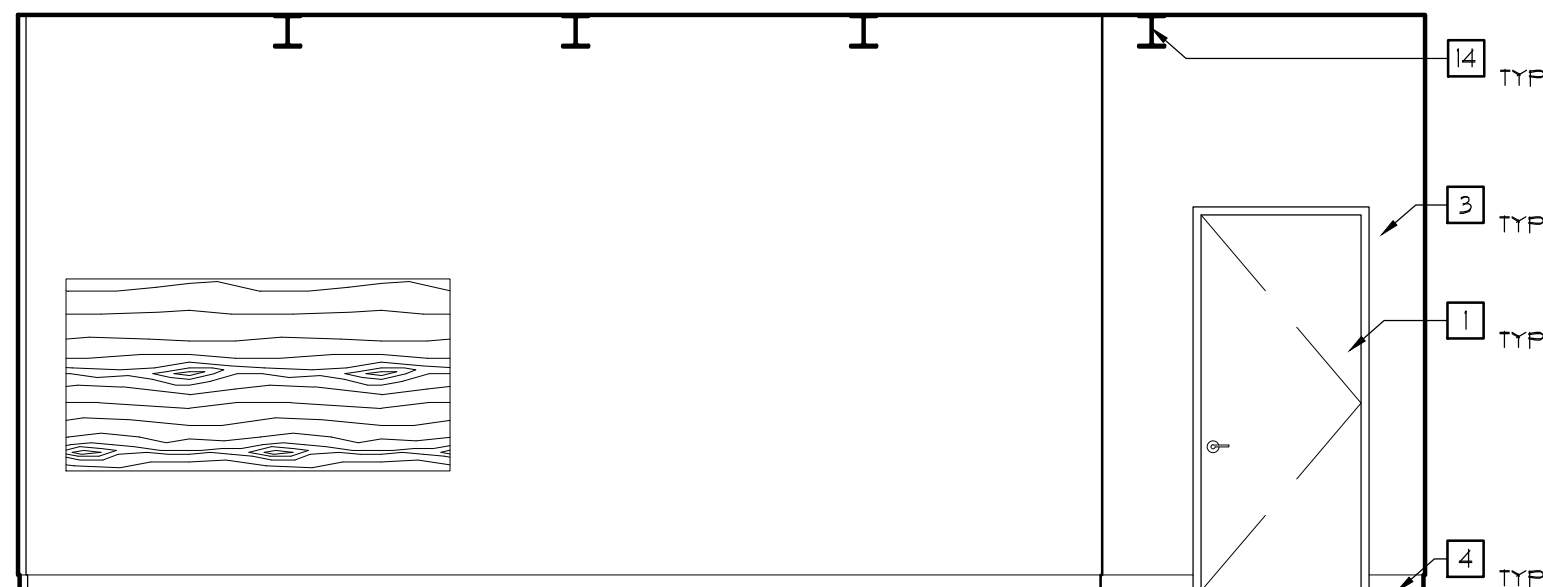
12 MECHANICAL (ROOM 127)  
EAST ELEVATION

SCALE: 1/4"=1'-0"



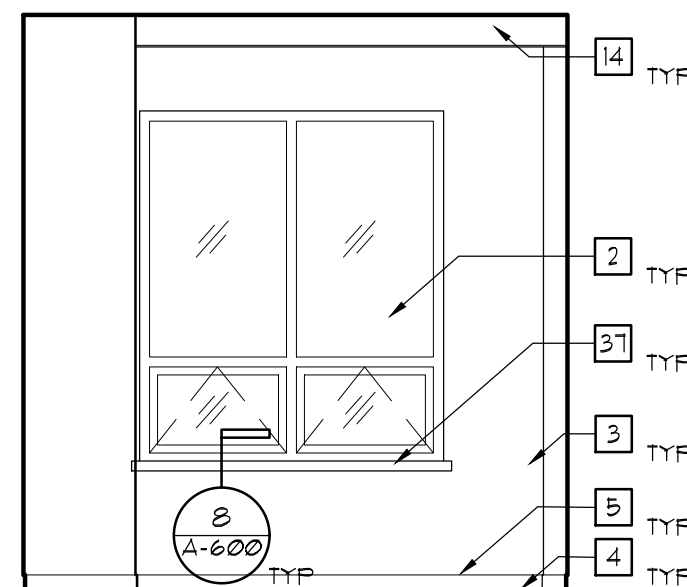
13 MECHANICAL (ROOM 122)  
SOUTH ELEVATION

SCALE: 1/4"=1'-0"



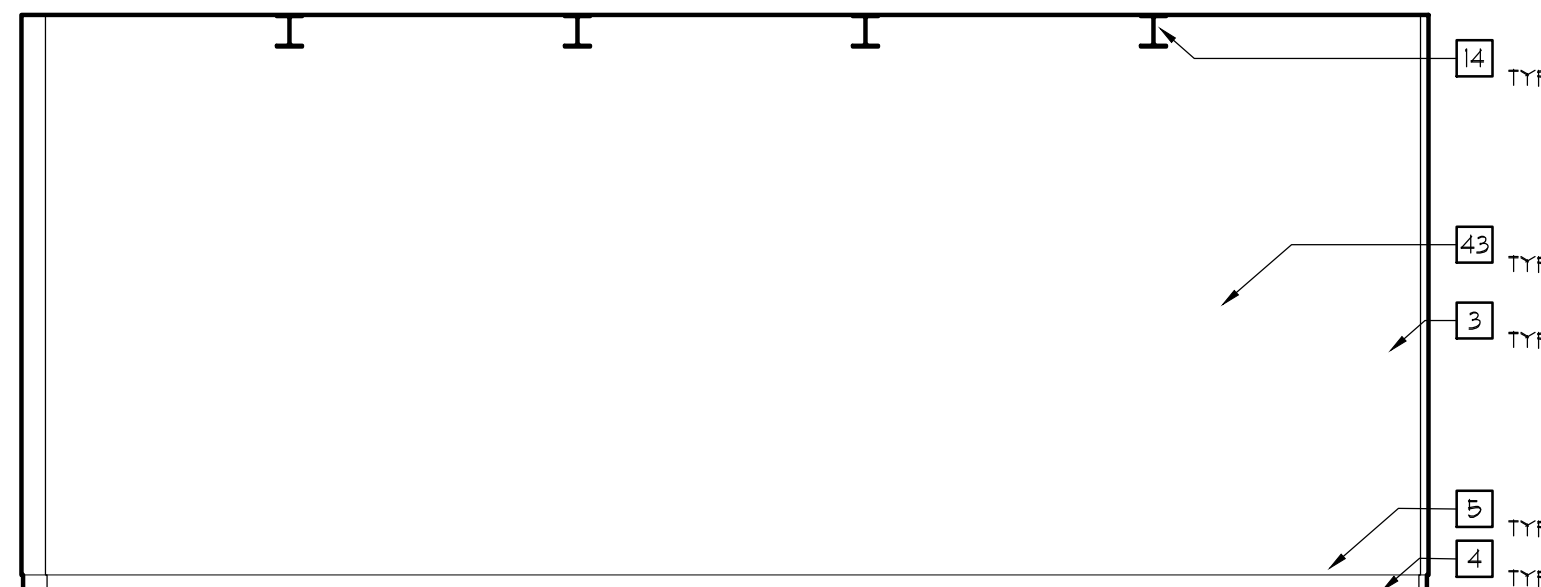
14 MECHANICAL (ROOM 122)  
WEST ELEVATION

SCALE: 1/4"=1'-0"



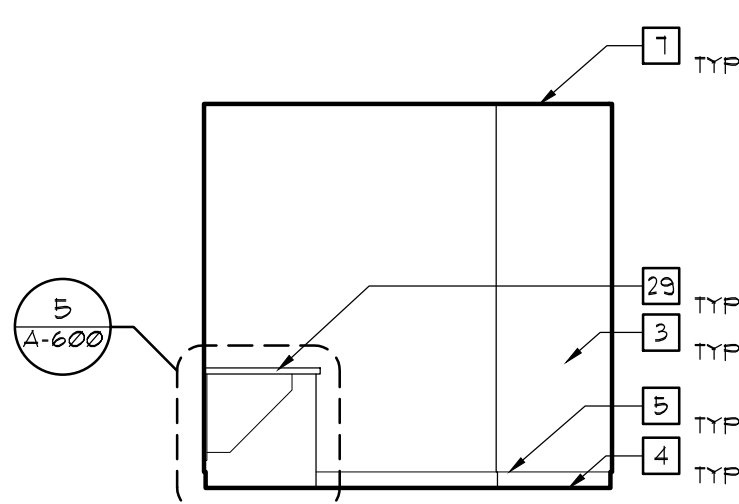
15 MECHANICAL (ROOM 122)  
NORTH ELEVATION

SCALE: 1/4"=1'-0"



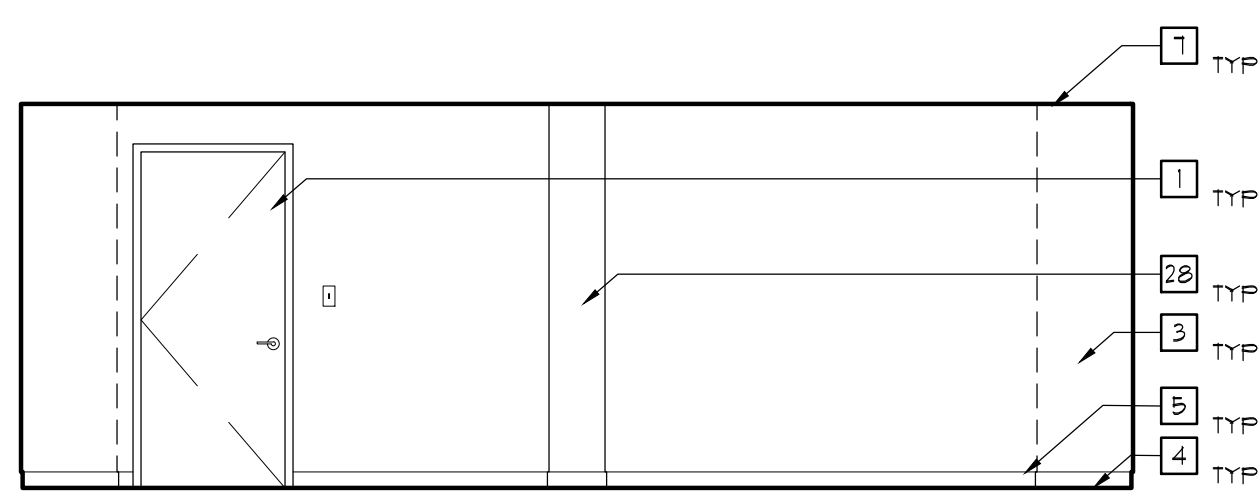
16 MECHANICAL (ROOM 122)  
EAST ELEVATION

SCALE: 1/4"=1'-0"



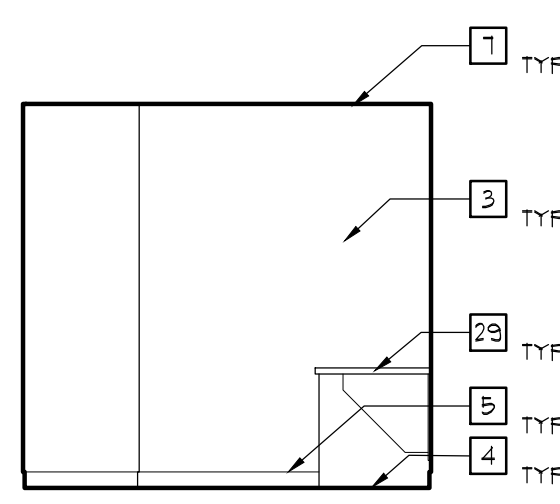
17 CONTROL (ROOM 205)  
NORTH ELEVATION

SCALE: 1/4"=1'-0"



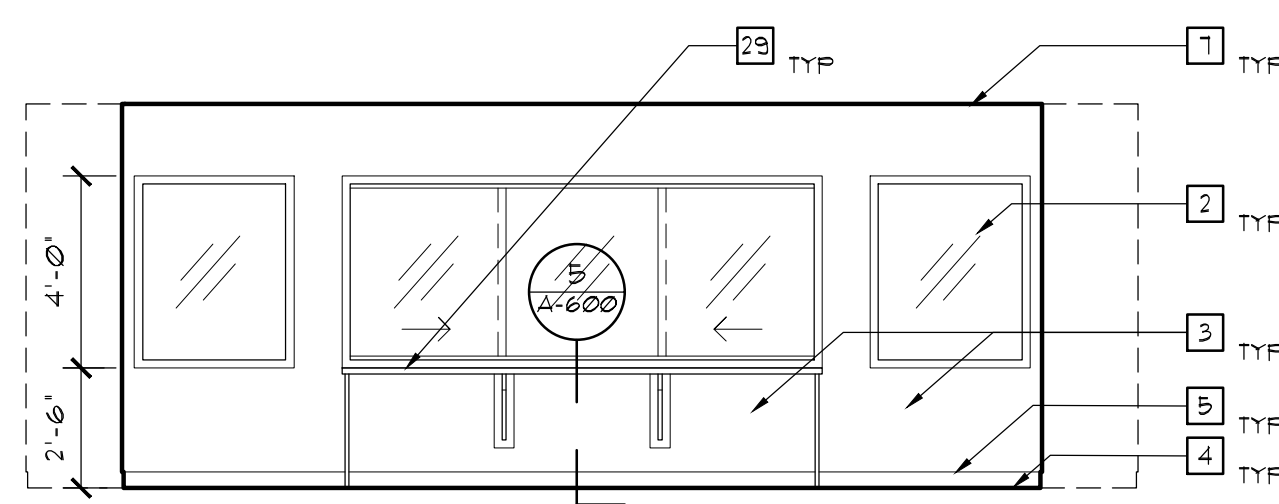
18 CONTROL (ROOM 205)  
EAST ELEVATION

SCALE: 1/4"=1'-0"



19 CONTROL (ROOM 205)  
SOUTH ELEVATION

SCALE: 1/4"=1'-0"

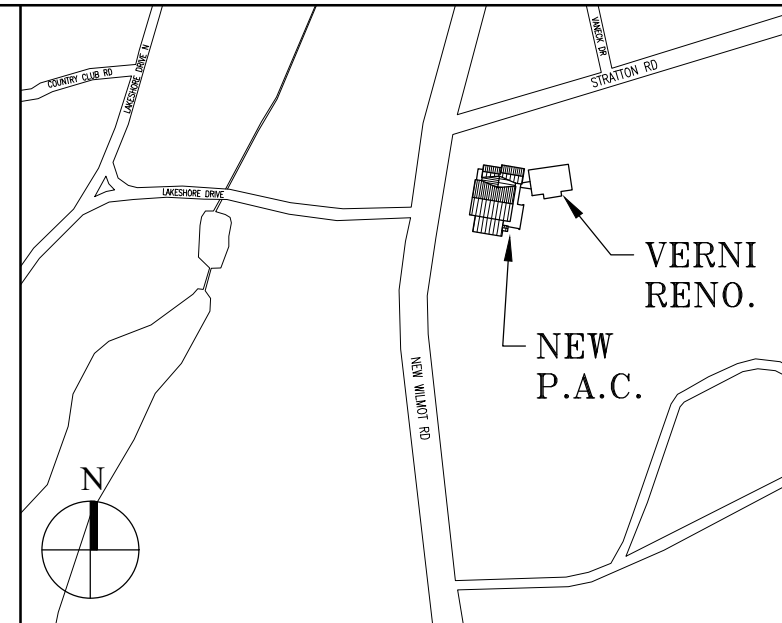


20 CONTROL (ROOM 205)  
WEST ELEVATION

SCALE: 1/4"=1'-0"

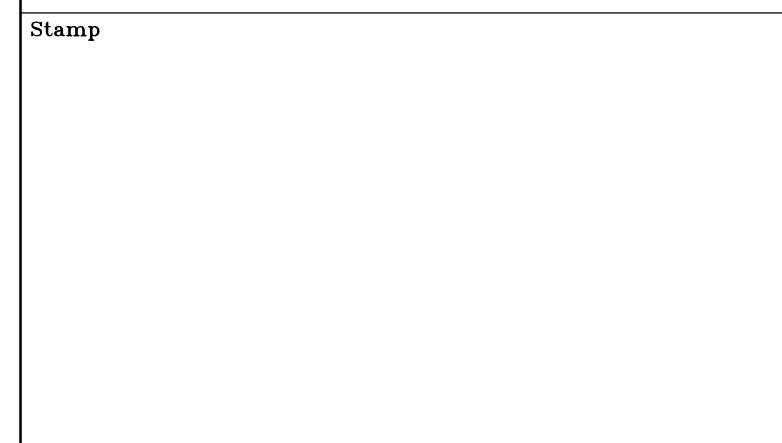
NOTES:

- 1 NEW DOOR, SEE SCHEDULE
- 2 NEW WINDOW, SEE SCHEDULE
- 3 PAINTED GYP. BD. SEE FINISH SCHEDULE
- 4 NEW FLOORING, SEE FINISH SCHEDULE
- 5 BASE, SEE FINISH SCHEDULE
- 6 MDF BAND SEE FINISH SCHEDULE
- 7 NEW CEILING, SEE RCP
- 8 SEE BORROWED LITE SCHEDULE
- 9 STAIR, SEE DETAIL
- 10 TRIMMED WHITEBOARD (SEE SPECS)
- 11 GYP. BD. SOFFIT (SEE RCP)
- 12 TRIMMED TACK BOARD (SEE SPECS)
- 13 DRINKING FOUNTAIN, (SEE PLUMBING DWGS)
- 14 STRUCTURAL ELEMENTS (SEE STRUCT. DWGS)
- 15 WALL BUILD OUT FOR DOOR
- 16 DUCTWORK, SEE MEP DWGS
- 17 TILE BASE (SEE FINISH SCHEDULE)
- 18 PORCELAIN TILE (SEE FINISH SCHEDULE)
- 19 FIN TUBE (SEE MEP DWGS)
- 20 HOLLOW METAL FRAME OPENING
- 21 ELEVATOR DOOR (SEE SPECS)
- 22 DROPPED GYP. CEILING (SEE RCP)
- 23 BRICK WALL (SEE SPECS)
- 24 WOOD CASING (SEE DETAILS)
- 25 HAND RAIL (SEE DETAILS ON A-505)
- 26 SINK (SEE MEP DWGS)
- 27 VENTED BASE (SEE DETLS. & FINISH SCHEDULE)
- 28 PAINTED MDF (SEE SPECS & DETAILS)
- 29 MILLWORK (SEE A-600s & SPECS)
- 30 EXIST. WINDOW, PROTECT & CLEAN AS NEEDED
- 31 EXIST. SKYLIGHT, PATCH DRYWALL SURROUND
- 32 EXIST. DOOR, PROTECT & CLEAN AS NEEDED
- 33 EXPANSION JOINT BETW. BUILDINGS, SEE A-505
- 34 SEE A-505 FOR CARPET VINYL TRANSITIONS
- 35 STEEL COLUMN, PAINT
- 36 ACOUSTICAL WALL PANELS
- 37 WINDOW SILL, SEE MILLWORK DETAIL
- 38 FIRE EXTINGUISHER AND CABINET
- 39 SMOKE Baffle AROUND LOBBY STAIR
- 40 THEATER AV EQUIPMENT
- 41 THEATER RIGGING AND LIGHTING SYSTEM
- 42 LIGHT FIXTURE, SEE RCP & FIXTURE SCHEDULE
- 43 1/2" THICK, PLYWOOD FOR EQUIPMENT PANELS
- 44 SIGNAGE (BY OWNER)
- 45 MASONRY INFILL AT WINDOW, PAINT, SEE PLANS
- 46 WALL OPENINGS FOR MECHANICAL DUCTS
- 47 SPRAY-ON ACOUSTICAL INSUL. AT WALLS & CLG.
- 48 MECHANICAL GRILLE, SEE MECHANICAL DWGS
- 49 BLANK OFF OPENING WITH SHEETMETAL
- 50 OUTLINE OF MECHANICAL UNIT, SEE MEP



Key Plan (not to scale)

7.	6/01/2021	ISSUED FOR BID
6.	5/07/2021	RE-ISSUED FOR BUILDING PERMIT REVIEW
5.	2/01/2021	ISSUED FOR BUILDING PERMIT REVIEW
4.	10/14/2020	ISSUED FOR PLANNING BOARD REVIEW
3.	9/23/2020	RESUBMITTED FOR ZONING REVIEW
2.	8/28/2020	ISSUED FOR PRELIMINARY DOB REVIEW
1.	1/10/2020	ISSUED FOR DD ESTIMATE
No.	Date	Revision/Submission
STRUCTURAL & SITE CIVIL ENGINEER		
DOMINICK R. PILLA		
ASSOCIATES, P.C.		
143 MAIN STREET		
NYACK, NY 10960		
845-727-7793		
MEP ENGINEER		ROOFING CONSULTANT
JMV CONSULTING		WATSKY ASSOCIATES
ENGINEERING, P.C.		20 MADISON AVENUE
37 W. 39 STREET, STE 703		VALHALLA, NY 10595
NEW YORK, NY 10018		914-948-3450
212-852-9855		



Project Title  
IONA PREPARATORY SCHOOL  
ADDITION AND ALTERATION TO THE  
PAUL VERNI FINE ARTS CENTER

Project Address  
IONA PREPARATORY SCHOOL  
255 Wilmot Road  
New Rochelle, NY 10804

Drawing Title  
INTERIOR ELEVATIONS  
MECHANICAL ROOMS

Scale	Job No.	Date	Drawing No.
AS NOTED	1618	04/03/2019	A-409

Drawn  
JPE

Peter Gisolfi Associates  
Architects  
566 Warburton Avenue  
Hastings on Hudson, NY 10706  
914 478 3677

PETER GISOLFI ASSOCIATES