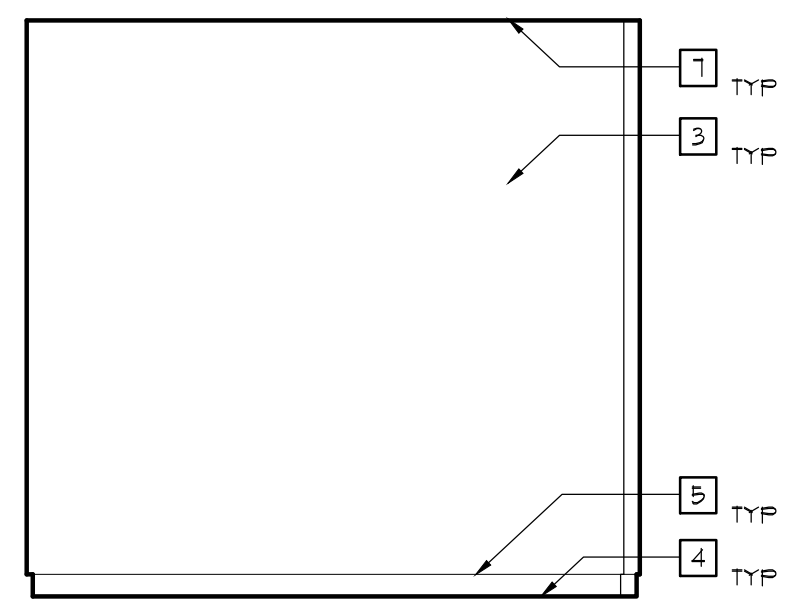
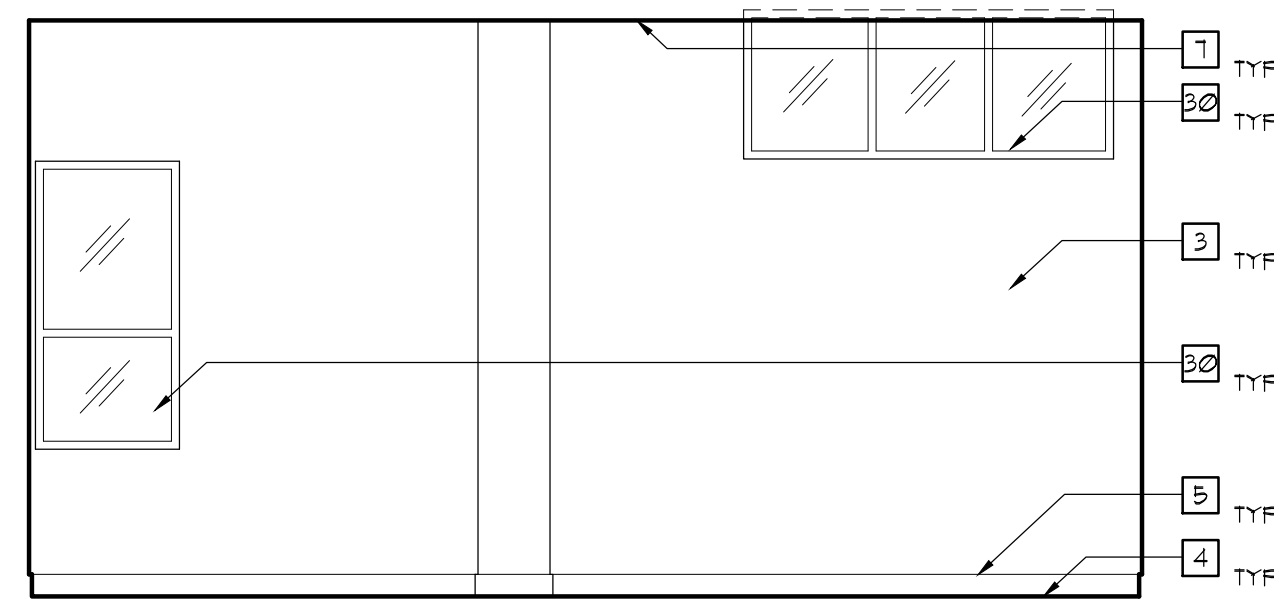


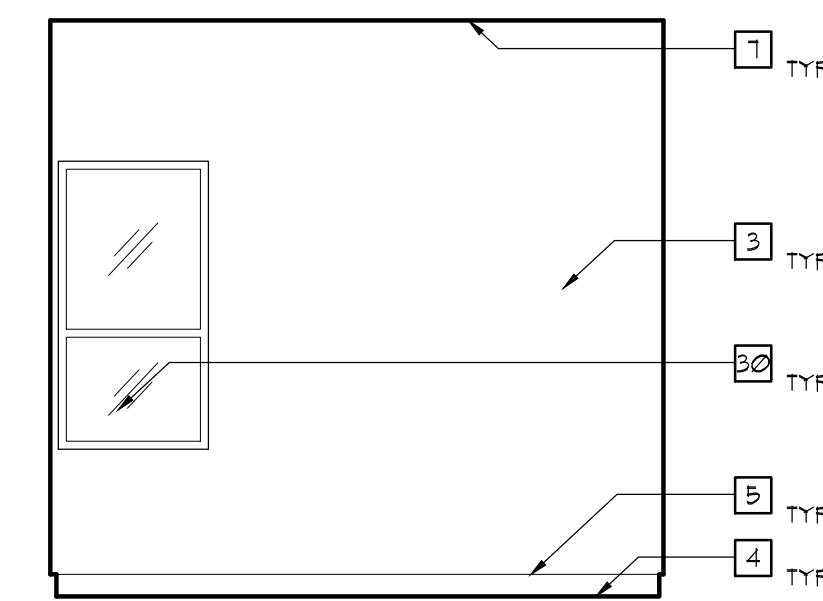
1 DIGITAL MEDIA (ROOM 151)
NORTH ELEVATION
SCALE: 1/4"=1'-0"



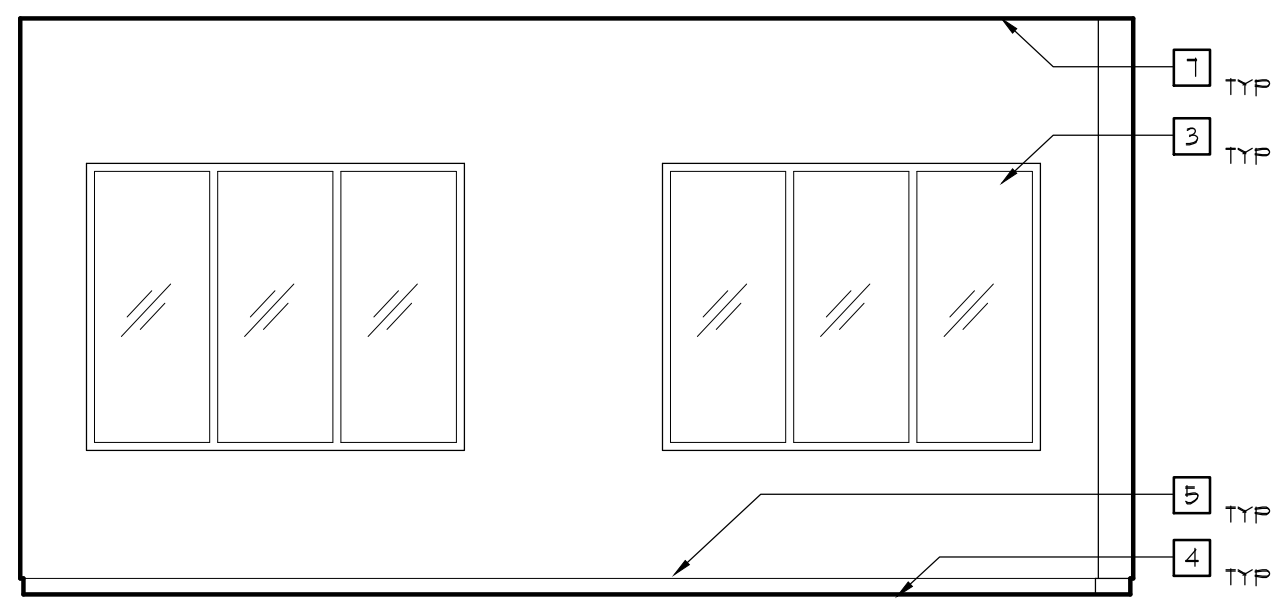
2 DIGITAL MEDIA (ROOM 151)
EAST ELEVATION
SCALE: 1/4"=1'-0"



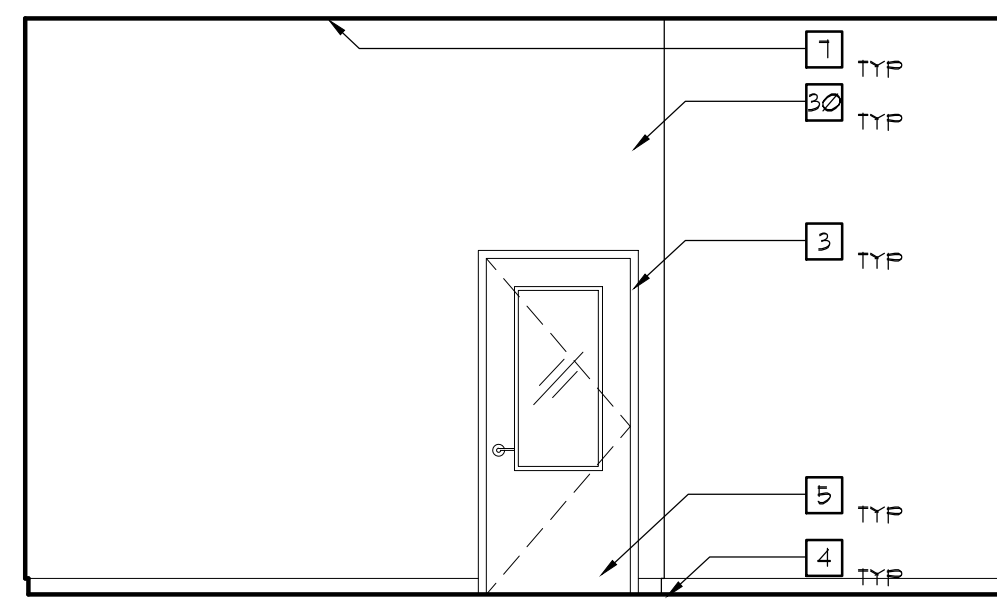
3 DIGITAL MEDIA (ROOM 151)
SOUTH ELEVATION
SCALE: 1/4"=1'-0"



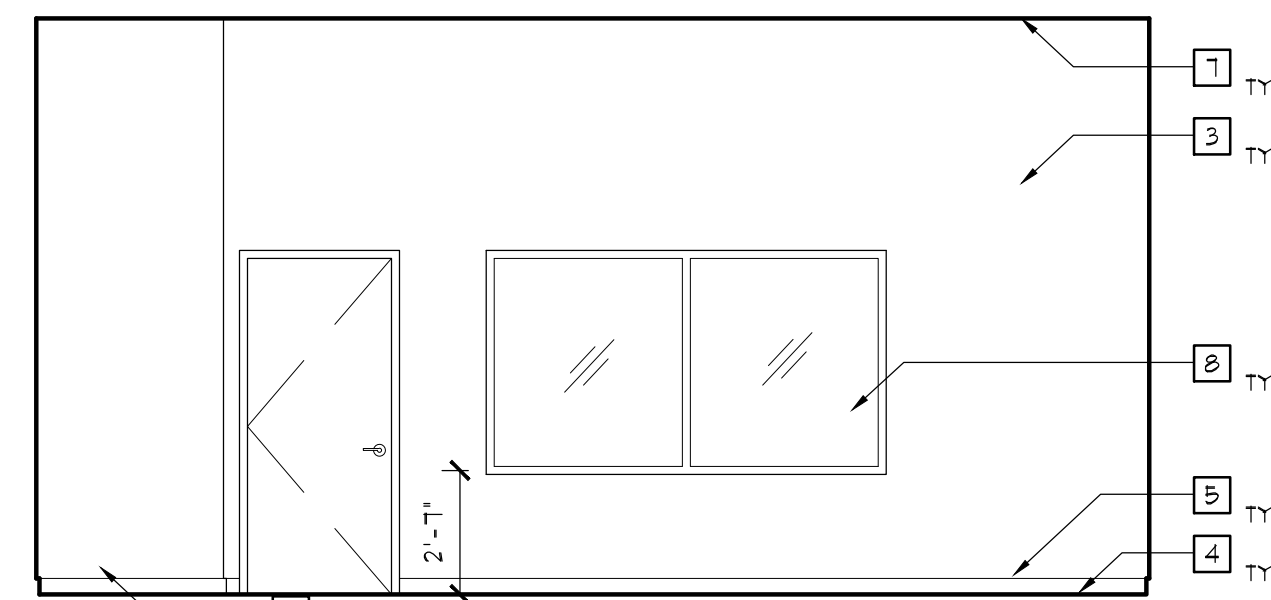
4 DIGITAL MEDIA (ROOM 151)
WEST ELEVATION
SCALE: 1/4"=1'-0"



5 TV / RADIO STUDIO (ROOM 168)
NORTH ELEVATION
SCALE: 1/4"=1'-0"



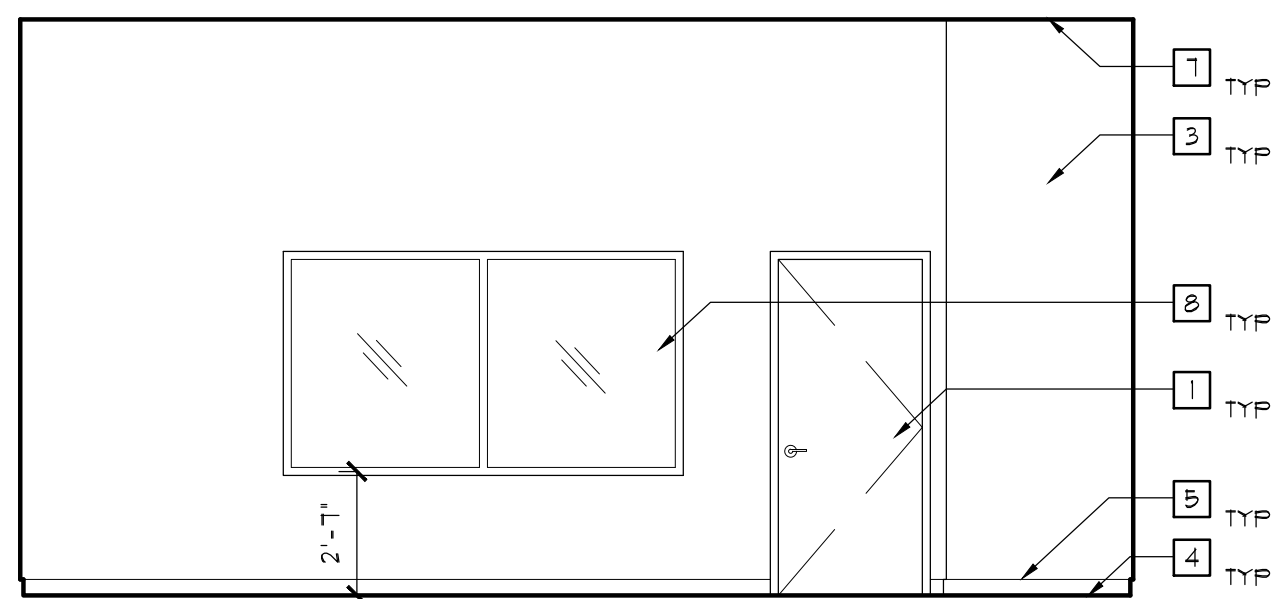
6 TV / RADIO STUDIO (ROOM 168)
EAST ELEVATION
SCALE: 1/4"=1'-0"



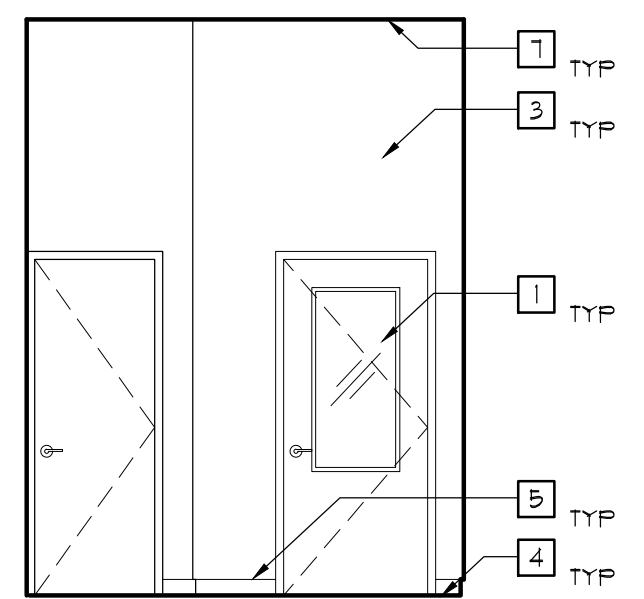
7 TV / RADIO STUDIO (ROOM 168)
SOUTH ELEVATION
SCALE: 1/4"=1'-0"



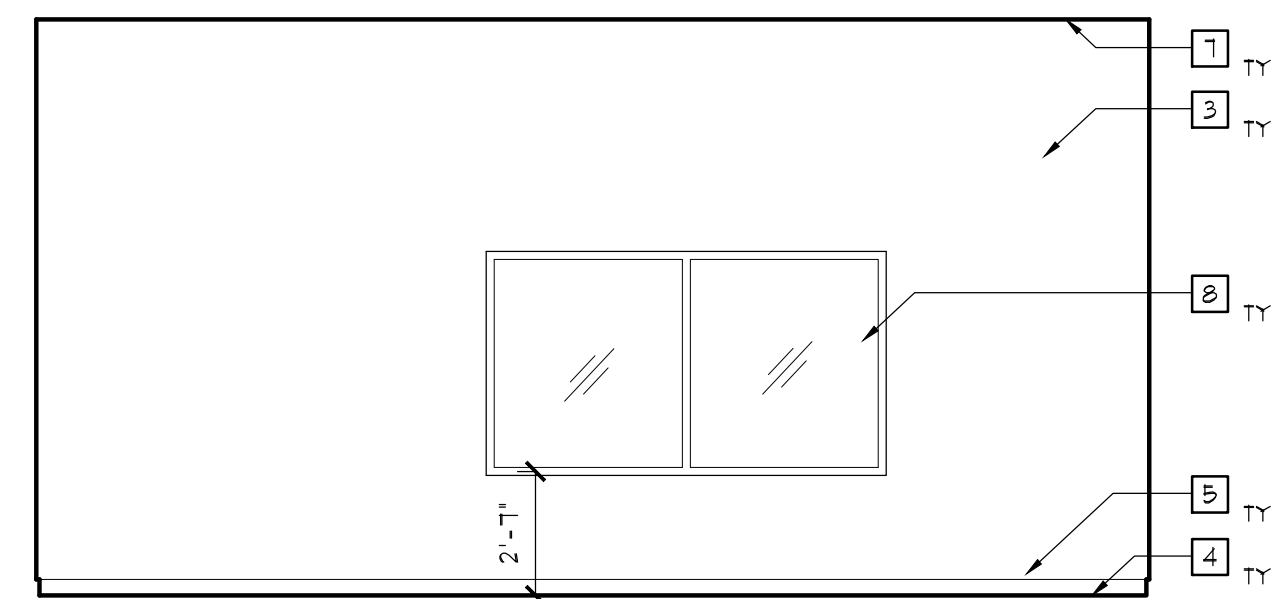
8 TV / RADIO STUDIO (ROOM 168)
WEST ELEVATION
SCALE: 1/4"=1'-0"



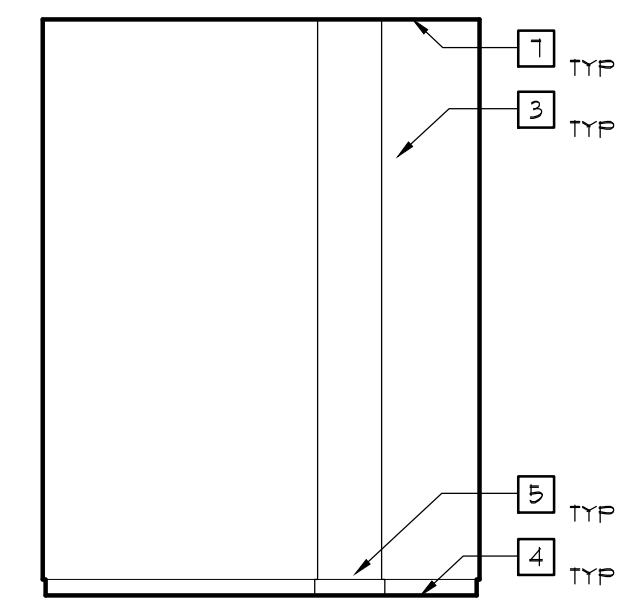
9 PRODUCTION BOOTH (ROOM 169)
NORTH ELEVATION
SCALE: 1/4"=1'-0"



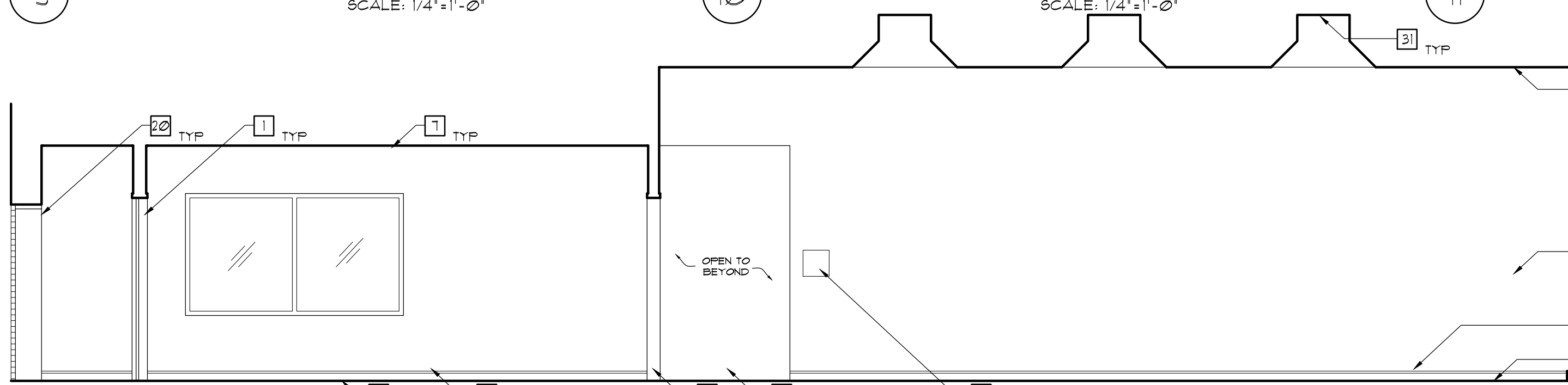
10 PRODUCTION BOOTH (ROOM 169)
EAST ELEVATION
SCALE: 1/4"=1'-0"



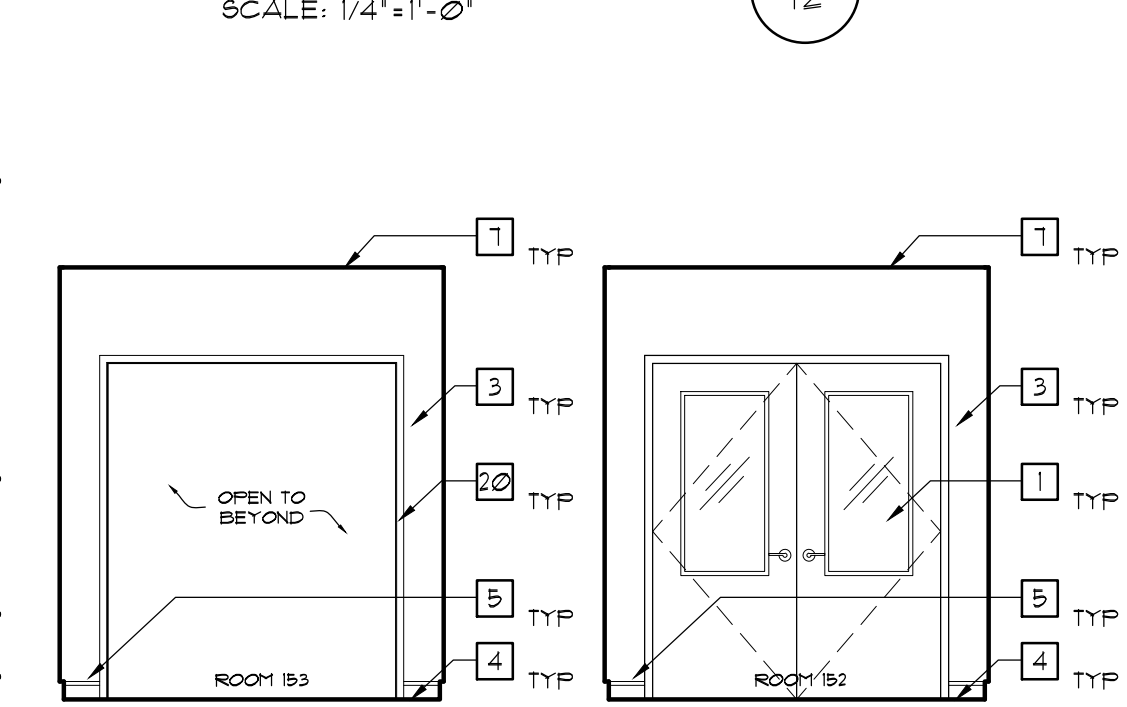
11 PRODUCTION BOOTH (ROOM 169)
SOUTH ELEVATION
SCALE: 1/4"=1'-0"



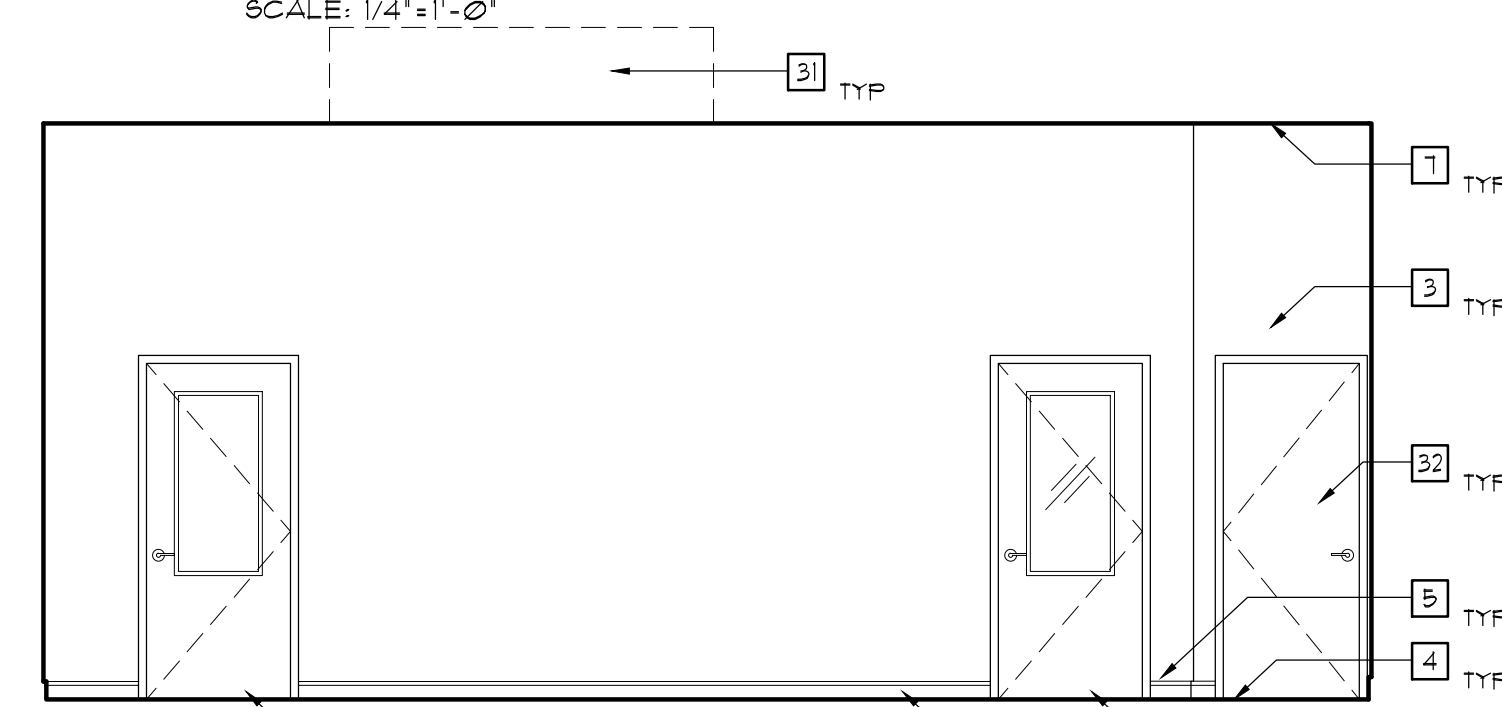
12 PRODUCTION BOOTH (ROOM 169)
WEST ELEVATION
SCALE: 1/4"=1'-0"



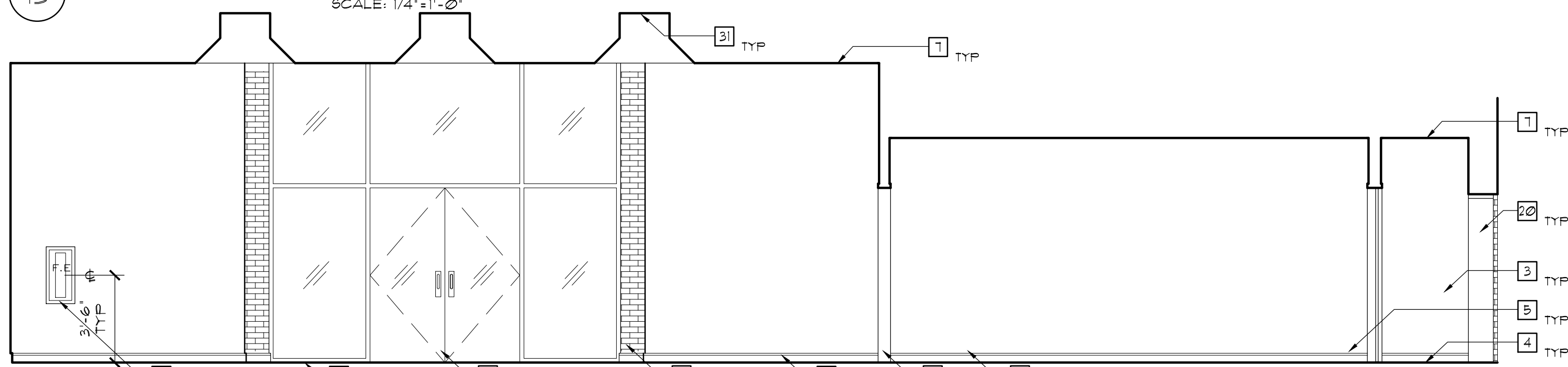
13 WEST CORRIDOR (ROOMS 152 & 153) / PERFORMANCE SPACE (ROOM 150)
NORTH ELEVATION
SCALE: 1/4"=1'-0"



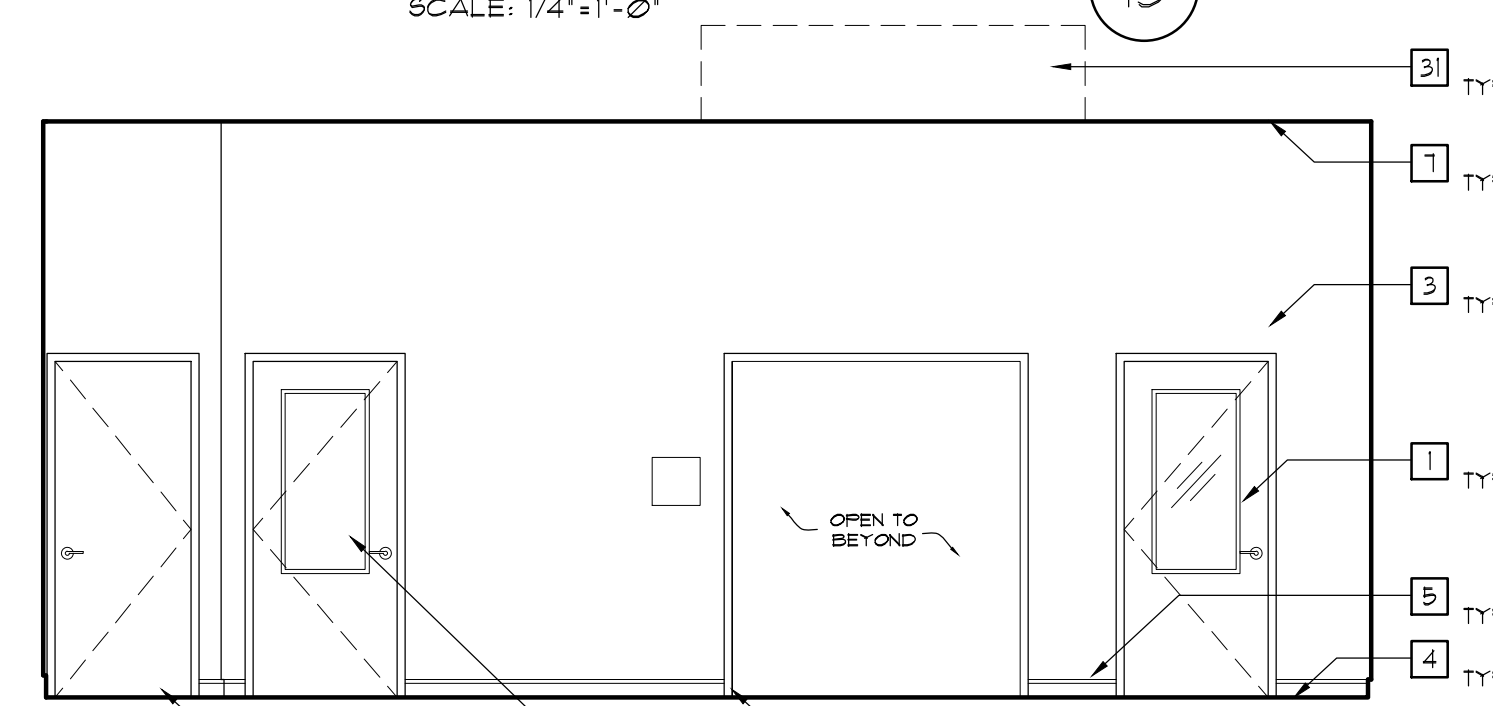
14 WEST CORRIDOR (ROOMS 152 & 153)
EAST ELEVATIONS
SCALE: 1/4"=1'-0"



15 PERFORMANCE SPACE (ROOM 150)
EAST ELEVATION
SCALE: 1/4"=1'-0"



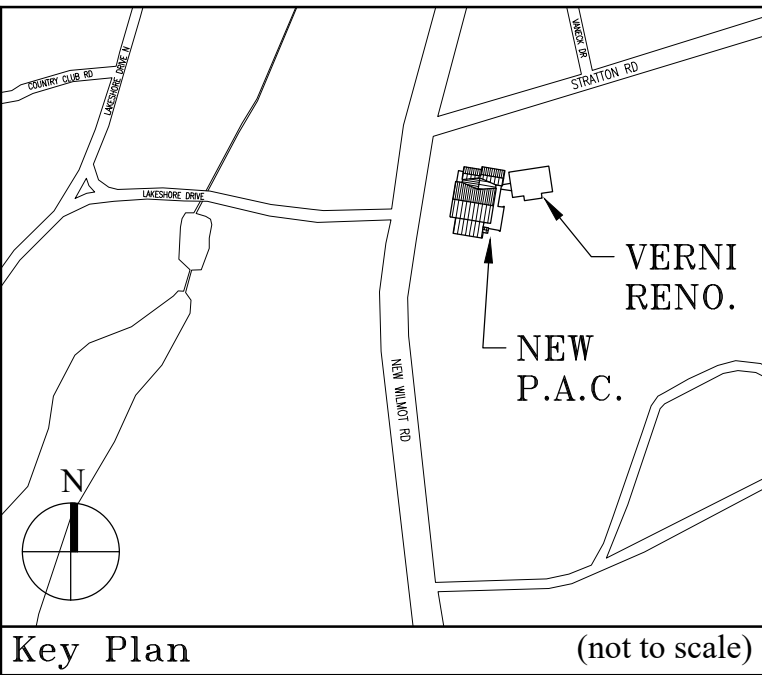
16 PERFORMANCE SPACE (ROOM 150) / WEST CORRIDOR (ROOMS 152 & 153)
SOUTH ELEVATION
SCALE: 1/4"=1'-0"



17 PERFORMANCE SPACE (ROOM 150)
WEST ELEVATION
SCALE: 1/4"=1'-0"

NOTES:

- 1 NEW DOOR, SEE SCHEDULE
- 2 NEW WINDOW, SEE SCHEDULE
- 3 PAINTED GYP. BD. SEE FINISH SCHEDULE
- 4 NEW FLOORING, SEE FINISH SCHEDULE
- 5 BASE, SEE FINISH SCHEDULE
- 6 MDF BAND SEE FINISH SCHEDULE
- 7 NEW CEILING, SEE RCP
- 8 SEE BORROUED LITE SCHEDULE
- 9 STAIR, SEE DETAIL
- 10 TRIMMED WHITEBOARD (SEE SPECS)
- 11 GYP. BD. SOFFIT (SEE RCP)
- 12 TRIMMED TACK BOARD (SEE SPECS)
- 13 DRINKING FOUNTAIN (SEE PLUMBING DWGS)
- 14 STRUCTURAL ELEMENTS (SEE STRUCT. DWGS)
- 15 WALL BUILD OUT FOR DOOR
- 16 DUCTWORK, SEE MEP DWGS
- 17 TILE BASE (SEE FINISH SCHEDULE)
- 18 PORCELAIN TILE (SEE FINISH SCHEDULE)
- 19 FIN TUBE (SEE MEP DWGS)
- 20 HOLLOW METAL FRAME OPENING
- 21 ELEVATOR DOOR (SEE SPECS)
- 22 DROPPED GYP. CEILING (SEE RCP)
- 23 BRICK WALL (SEE SPECS)
- 24 WOOD CASING (SEE DETAILS)
- 25 HAND RAIL (SEE DETAILS ON A-505)
- 26 SINK (SEE MEP DWGS)
- 27 VENTED BASE (SEE DETLS. & FINISH SCHEDULE)
- 28 PAINTED MDF (SEE SPECS & DETAILS)
- 29 MILLWORK (SEE A-600s & SPECS)
- 30 EXIST. WINDOW PROTECT & CLEAN AS NEEDED
- 31 EXIST. SKYLIGHT PATCH DRYWALL SURROUND
- 32 EXIST. DOOR . PROTECT & CLEAN AS NEEDED
- 33 EXPANSION JOINT BETW. BUILDINGS. SEE A-205
- 34 SEE A-205 FOR CARPET VINYL TRANSITIONS
- 35 STEEL COLUMN PAINT
- 36 ACOUSTICAL WALL PANELS
- 37 WINDOW SILL. SEE MILLWORK DETAIL
- 38 FIRE EXTINGUISHER AND CABINET
- 39 SMOKE Baffle AROUND LOBBY STAIR
- 40 THEATER AV EQUIPMENT
- 41 THEATER RIGGING AND LIGHTING SYSTEM
- 42 LIGHT FIXTURE. SEE RCP & FIXTURE SCHEDULE
- 43 1/2" THICK PLYWOOD FOR EQUIPMENT PANELS
- 44 SIGNAGE (BY OWNER)
- 45 MASONRY INFILL AT WINDOW. PAINT. SEE PLANS
- 46 WALL OPENINGS FOR MECHANICAL DUCTS
- 47 SPRAY-ON ACOUSTICAL INSUL. AT WALLS & CLG.
- 48 MECHANICAL GRILLE. SEE MECHANICAL DWGS
- 49 BLANK OFF OPENING WITH SHEETMETAL
- 50 OUTLINE OF MECHANICAL UNIT. SEE MEP



Key Plan (not to scale)

No.	Date	Revision/Submission
7.	6/01/2021	ISSUED FOR BID
6.	5/07/2021	RE-ISSUED FOR BUILDING PERMIT REVIEW
5.	2/01/2021	ISSUED FOR BUILDING PERMIT REVIEW
4.	10/14/2020	ISSUED FOR PLANNING BOARD REVIEW
3.	9/23/2020	RESUBMITTED FOR ZONING REVIEW
2.	8/28/2020	ISSUED FOR PRELIMINARY DOB REVIEW
1.	1/10/2020	ISSUED FOR DD ESTIMATE

STRUCTURAL & SITE CIVIL ENGINEER
DOMINICK R PILLA
ASSOCIATES, P.C.
143 MAIN STREET
NYACK, NY 10960
845-727-7793

MEP ENGINEER
JMV CONSULTING
ENGINEERING, P.C.
37 W. 39 STREET, STE 703
NEW YORK, NY 10018
212-852-9855

ROOFING CONSULTANT
WATSKY ASSOCIATES
20 MADISON AVENUE
VALHALLA, NY 10595
914-848-3450

Stamp

Project Title
IONA PREPARATORY SCHOOL
ADDITION AND ALTERATION TO THE
PAUL VERNI FINE ARTS CENTER

Project Address
IONA PREPARATORY SCHOOL
255 Wilnot Road
New Rochelle, NY 10804

Drawing Title
INTERIOR ELEVATIONS
PERFOR. SPACE, DIGITAL MEDIA, RADIO & PROD.

Scale	Job No.	Date	Drawing No.
AS NOTED	1618	04/03/2019	A-420

Drawn
JPE

Peer Gisolfi Associates
Architects Landscape Architects, LLP
586 Warburton Avenue
Hastings on Hudson, NY 10706
914 478 3677

PETER GISOLFI ASSOCIATES