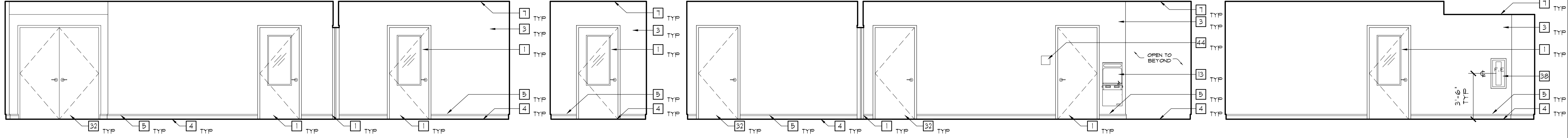


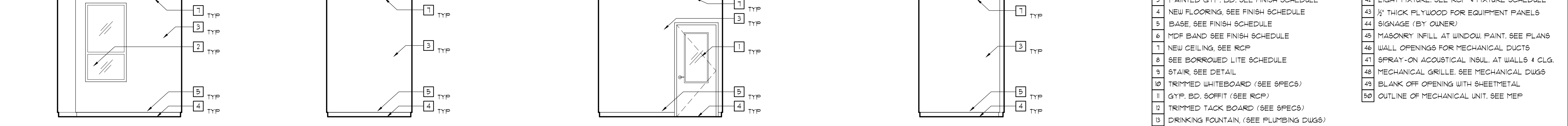
1 NE CLASSROOM (ROOM 167) NORTH ELEVATION SCALE: 1/4"=1'-0"
 2 NE CLASSROOM (ROOM 167) EAST ELEVATION SCALE: 1/4"=1'-0"
 3 NE CLASSROOM (ROOM 167) SOUTH ELEVATION SCALE: 1/4"=1'-0"
 4 NE CLASSROOM (ROOM 167) WEST ELEVATION SCALE: 1/4"=1'-0"



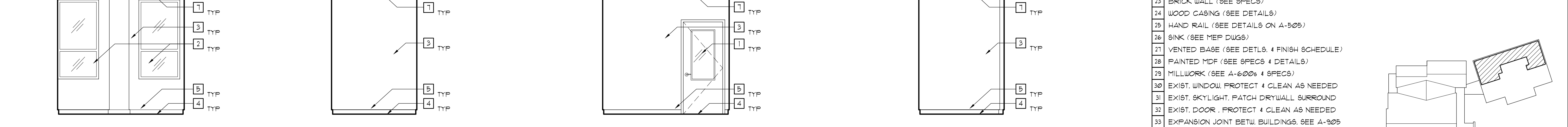
5 SE CLASSROOM (ROOM 154) NORTH ELEVATION SCALE: 1/4"=1'-0"
 6 SE CLASSROOM (ROOM 154) EAST ELEVATION SCALE: 1/4"=1'-0"
 7 SE CLASSROOM (ROOM 154) SOUTH ELEVATION SCALE: 1/4"=1'-0"
 8 SE CLASSROOM (ROOM 154) WEST ELEVATION SCALE: 1/4"=1'-0"



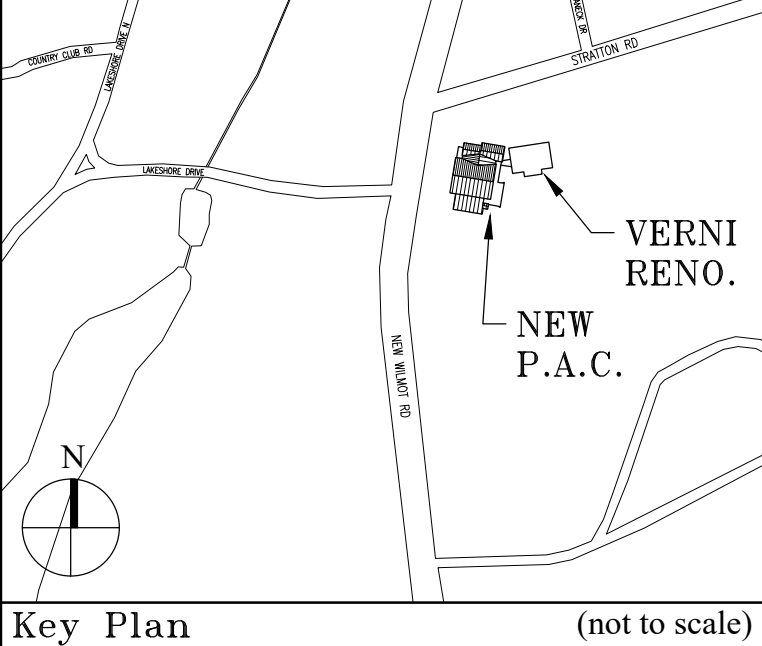
9 NORTH CORRIDOR (ROOMS 156 & 164) NORTH ELEVATION SCALE: 1/4"=1'-0"
 10 NORTH CORRIDOR (ROOMS 156 & 164) EAST ELEVATIONS SCALE: 1/4"=1'-0"
 11 NORTH CORRIDOR (ROOMS 156 & 164) SOUTH ELEVATION SCALE: 1/4"=1'-0"
 12 NORTH CORRIDOR (ROOM 156) WEST ELEVATION SCALE: 1/4"=1'-0"



13 OFFICE (ROOM 161) NORTH ELEVATION SCALE: 1/4"=1'-0"
 14 OFFICE (ROOM 161) EAST ELEVATION SCALE: 1/4"=1'-0"
 15 OFFICE (ROOM 161) SOUTH ELEVATION SCALE: 1/4"=1'-0"
 16 OFFICE (ROOM 161) WEST ELEVATION SCALE: 1/4"=1'-0"



17 OFFICE (ROOM 165) NORTH ELEVATION SCALE: 1/4"=1'-0"
 18 OFFICE (ROOM 165) EAST ELEVATION SCALE: 1/4"=1'-0"
 19 OFFICE (ROOM 165) SOUTH ELEVATION SCALE: 1/4"=1'-0"
 20 OFFICE (ROOM 165) WEST ELEVATION SCALE: 1/4"=1'-0"



Key Plan (not to scale)

No.	Date	Revision/Submission
1.	1/10/2020	ISSUED FOR DD ESTIMATE
2.	8/28/2020	ISSUED FOR PRELIMINARY DOB REVIEW
3.	9/23/2020	RESUBMITTED FOR ZONING REVIEW
4.	10/14/2020	ISSUED FOR PLANNING BOARD REVIEW
5.	2/01/2021	ISSUED FOR BUILDING PERMIT REVIEW
6.	5/07/2021	RE-ISSUED FOR BUILDING PERMIT REVIEW
7.	6/01/2021	ISSUED FOR BID

STRUCTURAL & SITE CIVIL ENGINEER
 DOMINICK R. PILLA
 ASSOCIATES, P.C.
 143 MAIN STREET
 NYACK, NY 10960
 845-727-7793

MEP ENGINEER
 JMV CONSULTING
 ENGINEERING, P.C.
 37 W. 39 STREET, STE 703
 NEW YORK, NY 10018
 212-852-9855

ROOFING CONSULTANT
 WATSKY ASSOCIATES
 20 MADISON AVENUE
 VALHALLA, NY 10595
 914-848-3450

- NOTES:
- 1 NEW DOOR. SEE SCHEDULE
 - 2 NEW WINDOW. SEE SCHEDULE
 - 3 PAINTED GYP. BD. SEE FINISH SCHEDULE
 - 4 NEW FLOORING. SEE FINISH SCHEDULE
 - 5 BASE. SEE FINISH SCHEDULE
 - 6 MDF BAND. SEE FINISH SCHEDULE
 - 7 NEW CEILING. SEE RCP
 - 8 SEE BORROWED LITE SCHEDULE
 - 9 STAIR. SEE DETAIL
 - 10 TRIMMED WHITEBOARD (SEE SPECS)
 - 11 GYP. BD. SOFFIT (SEE RCP)
 - 12 TRIMMED TACK BOARD (SEE SPECS)
 - 13 DRINKING FOUNTAIN. (SEE PLUMBING DUGS)
 - 14 STRUCTURAL ELEMENTS (SEE STRUCT. DUGS)
 - 15 WALL BUILD OUT FOR DOOR
 - 16 DUCTWORK. SEE MEP DUGS
 - 17 TILE BASE (SEE FINISH SCHEDULE)
 - 18 PORCELAIN TILE (SEE FINISH SCHEDULE)
 - 19 FIN TUBE (SEE MEP DUGS)
 - 20 HOLLOW METAL FRAME OPENING
 - 21 ELEVATOR DOOR (SEE SPECS)
 - 22 DROPPED GYP. CEILING (SEE RCP)
 - 23 BRICK WALL (SEE SPECS)
 - 24 WOOD CASING (SEE DETAILS)
 - 25 HAND RAIL (SEE DETAILS ON A-505)
 - 26 SINK (SEE MEP DUGS)
 - 27 VENTED BASE (SEE DETLS. & FINISH SCHEDULE)
 - 28 PAINTED MDF (SEE SPECS & DETAILS)
 - 29 MILLWORK (SEE A-600 & 4 SPECS)
 - 30 EXIST. WINDOW. PROTECT & CLEAN AS NEEDED
 - 31 EXIST. SKYLIGHT. PATCH DRYWALL SURROUND
 - 32 EXIST. DOOR. PROTECT & CLEAN AS NEEDED
 - 33 EXPANSION JOINT BETW. BUILDINGS. SEE A-905
 - 34 SEE A-905 FOR CARPET VINYL TRANSITIONS
 - 35 STEEL COLUMN. PAINT
 - 36 ACOUSTICAL WALL PANELS
 - 37 WINDOW SILL. SEE MILLWORK DETAIL
 - 38 FIRE EXTINGUISHER AND CABINET
 - 39 SMOKE BAFFLE AROUND LOBBY STAIR
 - 40 THEATER AV EQUIPMENT
 - 41 THEATER RIGGING AND LIGHTING SYSTEM
 - 42 LIGHT FIXTURE. SEE RCP & 4 FIXTURE SCHEDULE
 - 43 1/2" THICK PLYWOOD FOR EQUIPMENT PANELS
 - 44 SIGNAGE (BY OWNER)
 - 45 MASONRY INFILL AT WINDOW. PAINT. SEE PLANS
 - 46 WALL OPENINGS FOR MECHANICAL DUCTS
 - 47 SPRAY-ON ACOUSTICAL INSUL. AT WALLS & CLG.
 - 48 MECHANICAL GRILLE. SEE MECHANICAL DUGS
 - 49 BLANK OFF OPENING WITH SHEETMETAL
 - 50 OUTLINE OF MECHANICAL UNIT. SEE MEP

Project Title
 IONA PREPARATORY SCHOOL
 ADDITION AND ALTERATION TO THE
 PAUL VERNI FINE ARTS CENTER

Project Address
 IONA PREPARATORY SCHOOL
 255 Wilnot Road
 New Rochelle, NY 10804

Drawing Title
 INTERIOR ELEVATIONS
 CLASS RM, NORTH CORRIDOR & OFFICES

Scale	Job No.	Date	Drawing No.
AS NOTED	1618	04/03/2019	A-421

Drawn
 JPE

Peter Gisolfi Associates
 Architects Landscape Architects, LLP
 586 Warburton Avenue
 Hastings on Hudson, NY 10706
 914 478 3677

PETER GISOLFI ASSOCIATES