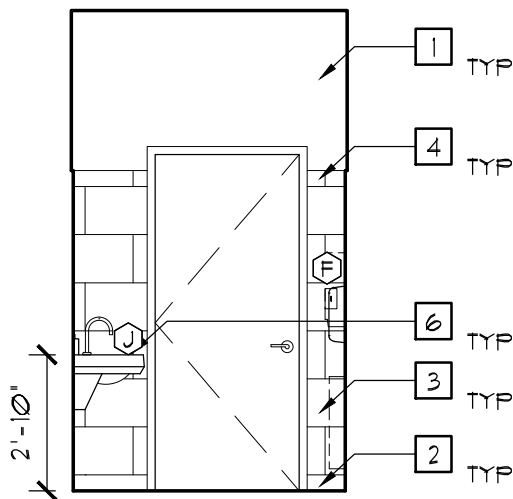
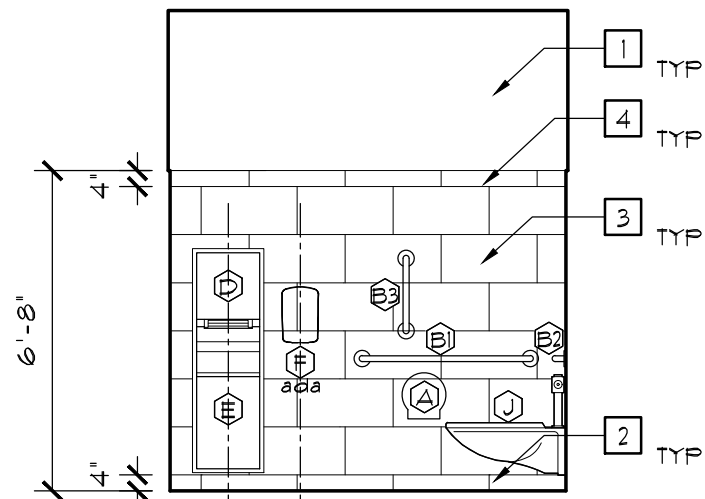


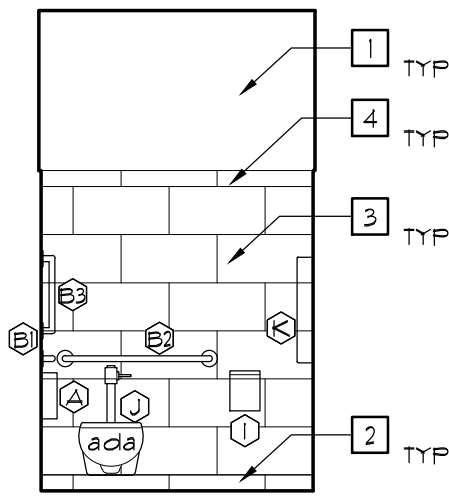
1 FAMILY RESTROOM (ROOM 151)
PARTIAL PLAN
SCALE: 1/4"=1'-0"



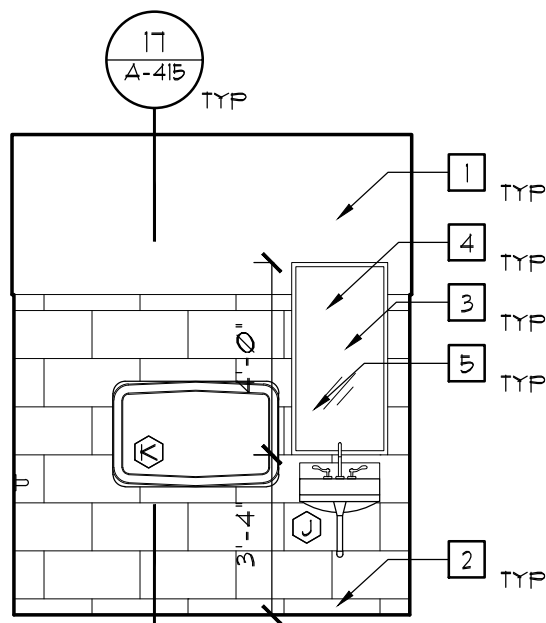
2 FAMILY RESTRM ELEV
SCALE: 1/4"=1'-0"



3 FAMILY RESTRM ELEV
SCALE: 1/4"=1'-0"

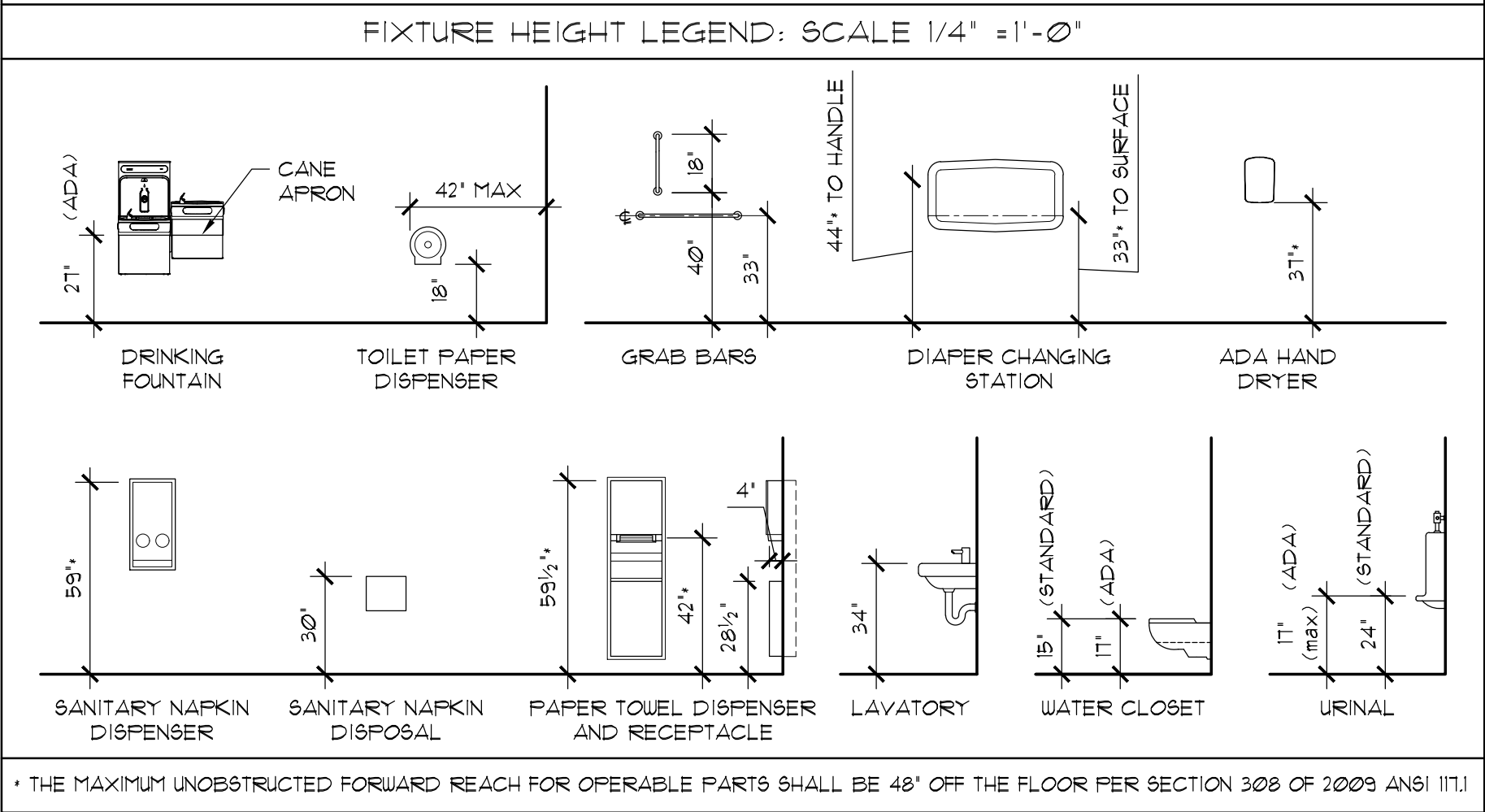


4 FAMILY RESTRM ELEV
SCALE: 1/4"=1'-0"

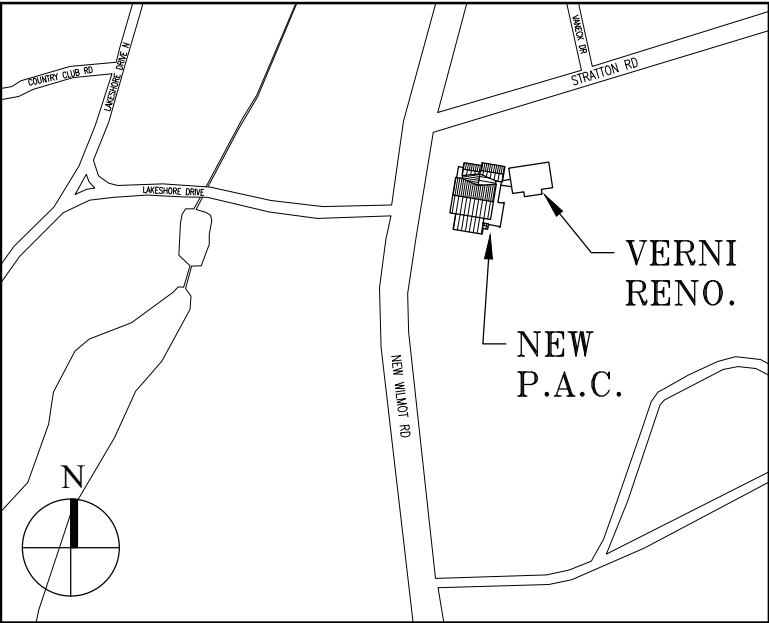


5 FAMILY RESTRM ELEV
SCALE: 1/4"=1'-0"

RESTROOM ACCESSORY SCHEDULE		
SYMBOL	DESCRIPTION	PRODUCT DETAILS/NOTES
(A)	TOILET TISSUE DISPENSER	TO BE PROVIDED BY OWNER FOR GC TO INSTALL
(B)	GRAB BAR	BOBRICK B-5006 X 42, 1/2" DIA TUBING, CONCEALED FLANGE, COVER SNAPS OVER MOUNTING FLANGE TO CONCEAL SCREWS. B1 (42"), B2 (36"), B3 (18")
(C)	SOAP DISPENSER	TO BE PROVIDED BY OWNER FOR COUNTERTOP PLACEMENT
(D)	PAPER TOWEL DISPENSER AND WASTE RECEPTACLE	BOBRICK 3061-50 AUTOMATIC ROLL PAPER TOWEL DISPENSER WITHIN BOBRICK B-3914 RECESSED CABINET, STAINLESS STEEL
(E)	WASTE RECEPTACLE	BOBRICK 360-60 10 GALLON WASTE RECEPTACLE WITHIN BOBRICK B-3914 RECESSED CABINET, STAINLESS STEEL
(F)	ADA HAND DRYER	EXCEL ThinAir HAND DRYER (3 3/8" PROJECTION)
(G)	PARTITION SYSTEM	1" THICK SOLID PLASTIC PARTITION, FURNISHED WITH STAINLESS STEEL HARDWARE AND ACCESSORIES. SEE SPEC.
(H)	SANITARY NAPKIN DISPENSER	BOBRICK B-3106, STAINLESS STEEL, SEMI-RECESSED
(I)	SANITARY NAPKIN DISPOSAL	BOBRICK B-4354 FOR PARTITION MOUNTED AND B-210 FOR SURFACE MOUNTED AT ADA STALLS, STAINLESS STEEL
(J)	PLUMBING FIXTURE	SEE PLUMBING FIXTURE SCHEDULE
(K)	DIAPER CHANGING STATION	BOBRICK KOALA KARE KB200-S6



* THE MAXIMUM UNOBSTRUCTED FORWARD REACH FOR OPERABLE PARTS SHALL BE 48" OFF THE FLOOR PER SECTION 308 OF 2009 ANSI (IT)



Key Plan (not to scale)

- TOILET ROOM TYPICAL NOTES:
- 1 GYP. BD. PAINT (SEE FINISH SCHEDULE)
 - 2 SANITARY COVE, SEE FINISH SCHEDULE
 - 3 PORCELAIN TILE, SEE FINISH SCHEDULE
 - 4 BULLNOSE TILE
 - 5 MIRROR (SEE DETAILS AND SPECS)
 - 6 CAESARSTONE COUNTER, SKIRT AND SIDE PANEL
 - 7 TOILET PARTITIONS
 - 8 MOP SINK, FAUCET, 5/8 GUARD

7.	6/01/2021	ISSUED FOR BID
6.	5/07/2021	RE-ISSUED FOR BUILDING PERMIT REVIEW
5.	2/01/2021	ISSUED FOR BUILDING PERMIT REVIEW
4.	10/14/2020	ISSUED FOR PLANNING BOARD REVIEW
3.	9/23/2020	RESUBMITTED FOR ZONING REVIEW
2.	8/28/2020	ISSUED FOR PRELIMINARY DOB REVIEW
1.	1/10/2020	ISSUED FOR DD ESTIMATE
No.	Date	Revision/Submission
STRUCTURAL & SITE CIVIL ENGINEER		
DOMINICK R PILLA ASSOCIATES, P.C. 143 MAIN STREET NYACK, NY 10960 845-727-7793		
MEP ENGINEER		ROOFING CONSULTANT
JMV CONSULTING ENGINEERING, P.C. 37 W. 39 STREET, STE 703 NEW YORK, NY 10018 212-852-9855		WATSKY ASSOCIATES 20 MADISON AVENUE VALHALLA, NY 10595 914-848-3450

Stamp

Project Title
IONA PREPARATORY SCHOOL
ADDITION AND ALTERATION TO THE
PAUL VERNI FINE ARTS CENTER

Project Address
IONA PREPARATORY SCHOOL
255 Wilmot Road
New Rochelle, NY 10804

Drawing Title
INTERIOR ELEVATIONS
TOILET – VERNI BUILDING

Scale	Job No.	Date	Drawing No.
AS NOTED	1618	04/03/2019	A-425

Drawn
JPE

Peter Gisolfi Associates
Architects Landscape Architects, LLP
566 Warburton Avenue
Hastings on Hudson, NY 10706
914 478 3677

PETER GISOLFI ASSOCIATES

