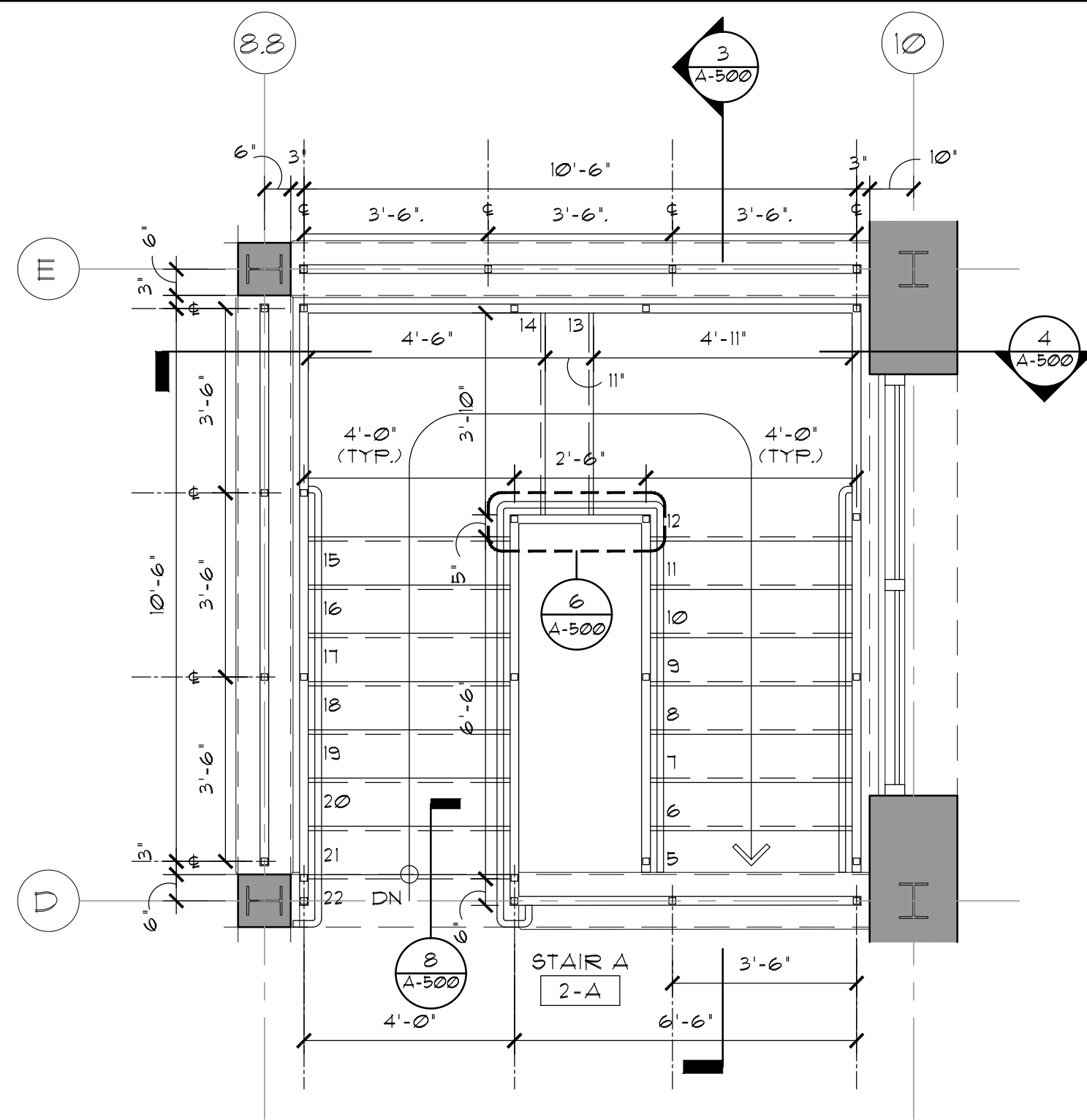
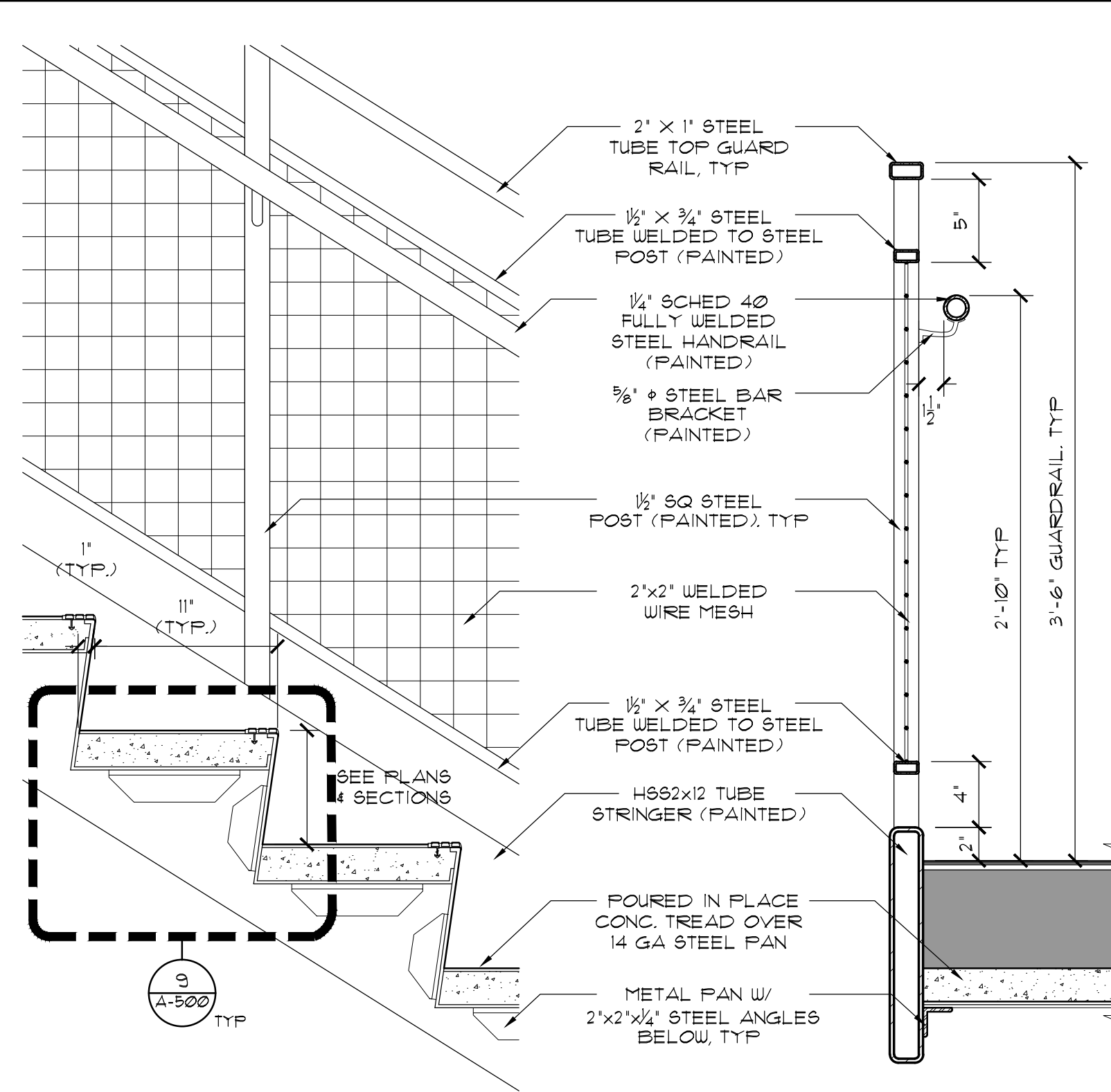


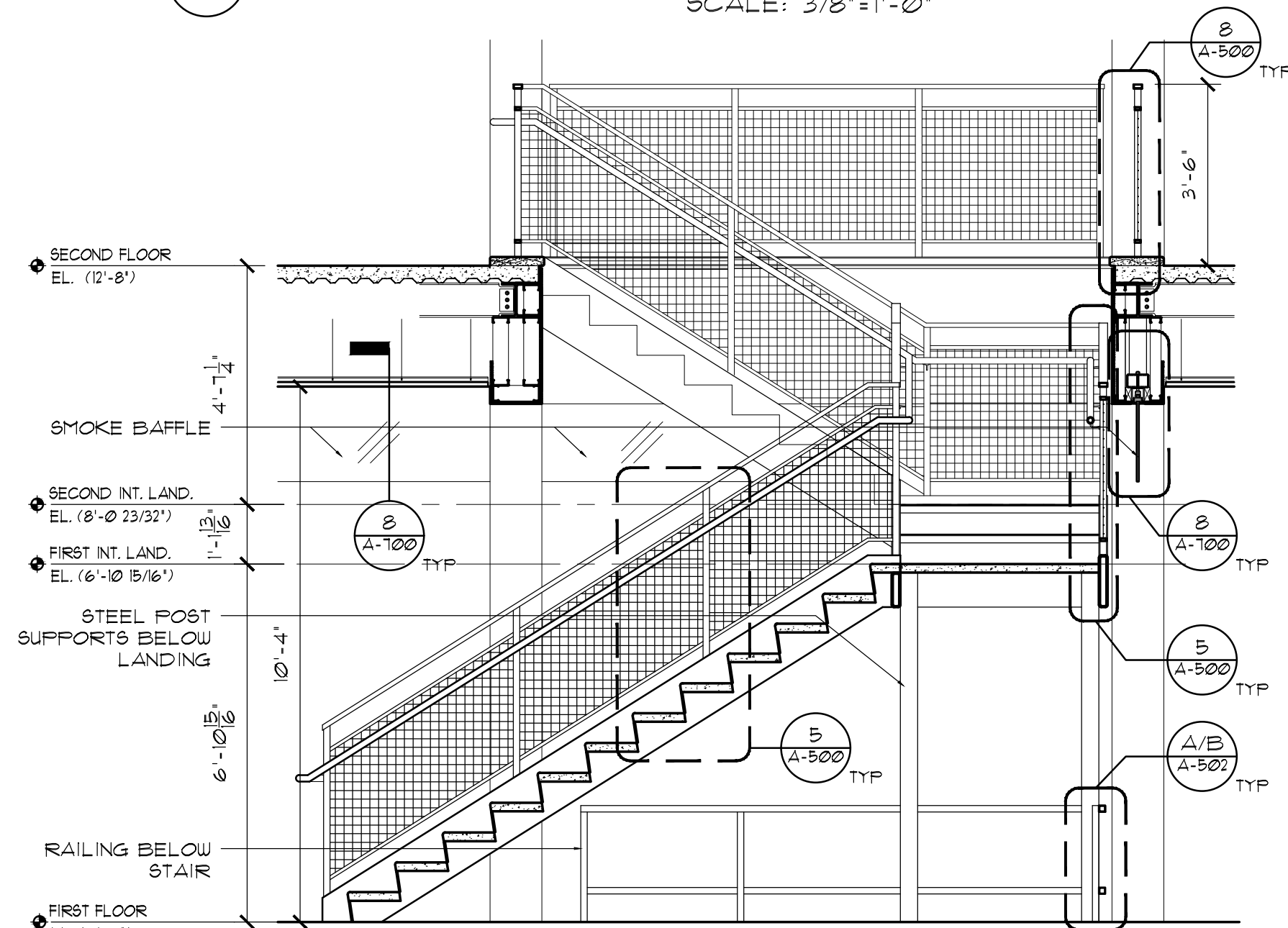
1 STAIR A - FIRST FLOOR PLAN
SCALE: 3/8" = 1'-0"



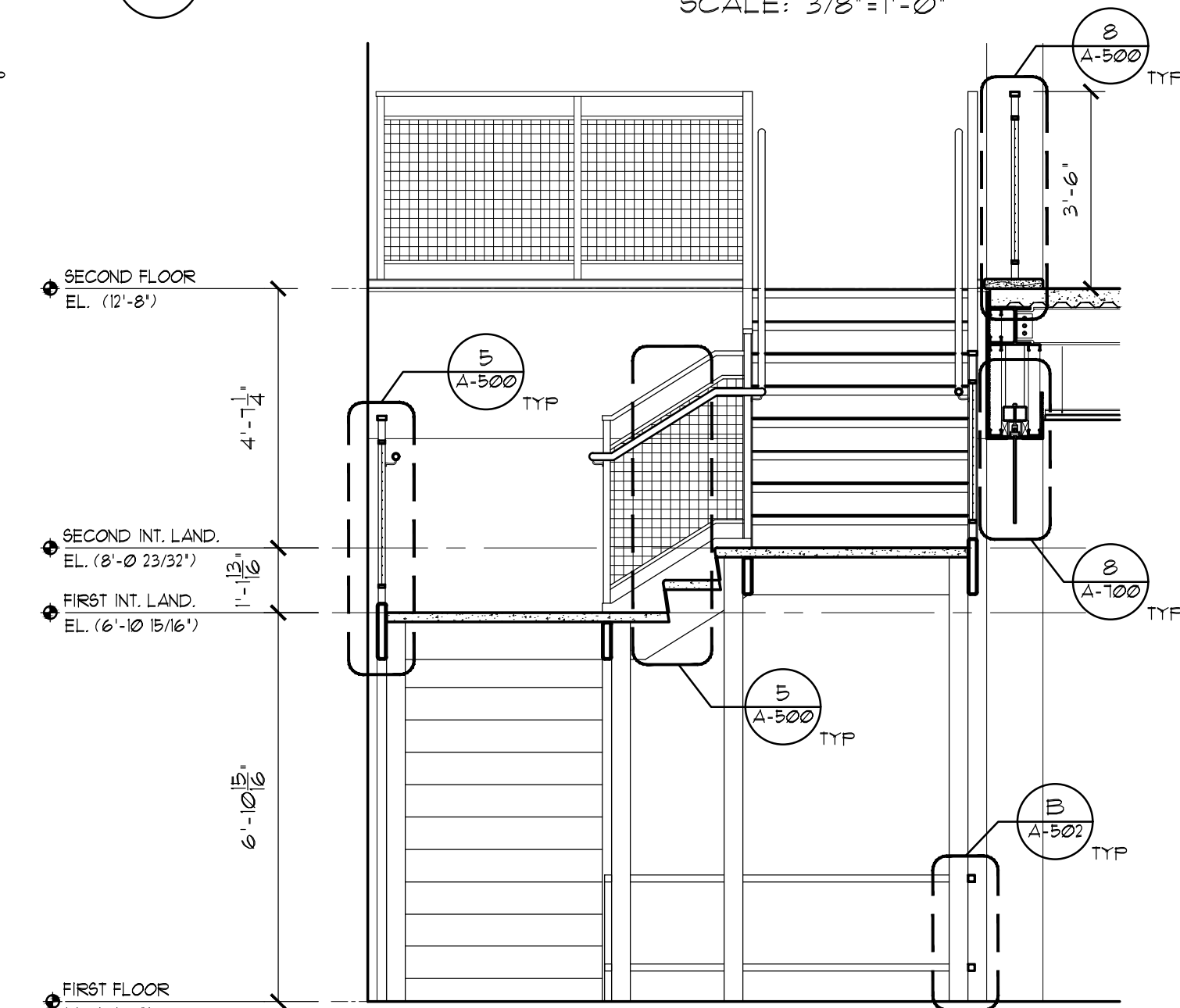
2 STAIR A - SECOND FLOOR PLAN
SCALE: 3/8" = 1'-0"



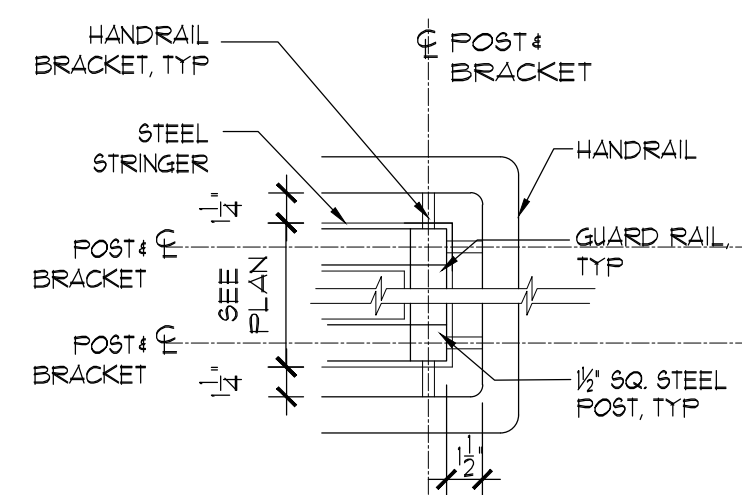
5 STAIR DETAIL
SCALE: 1-1/2" = 1'-0"



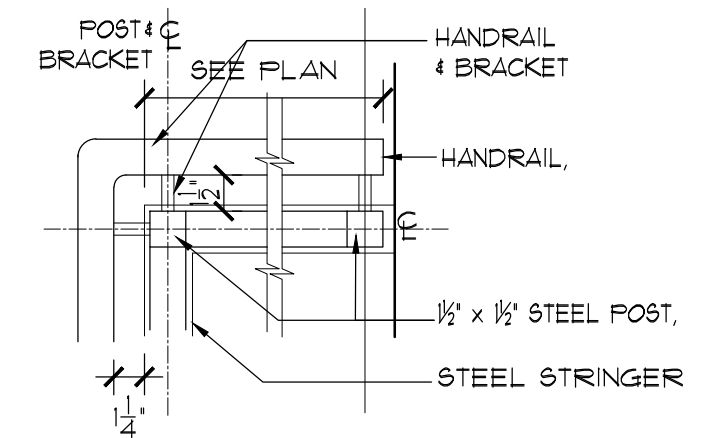
3 STAIR A - SECTION
SCALE: 3/8" = 1'-0"



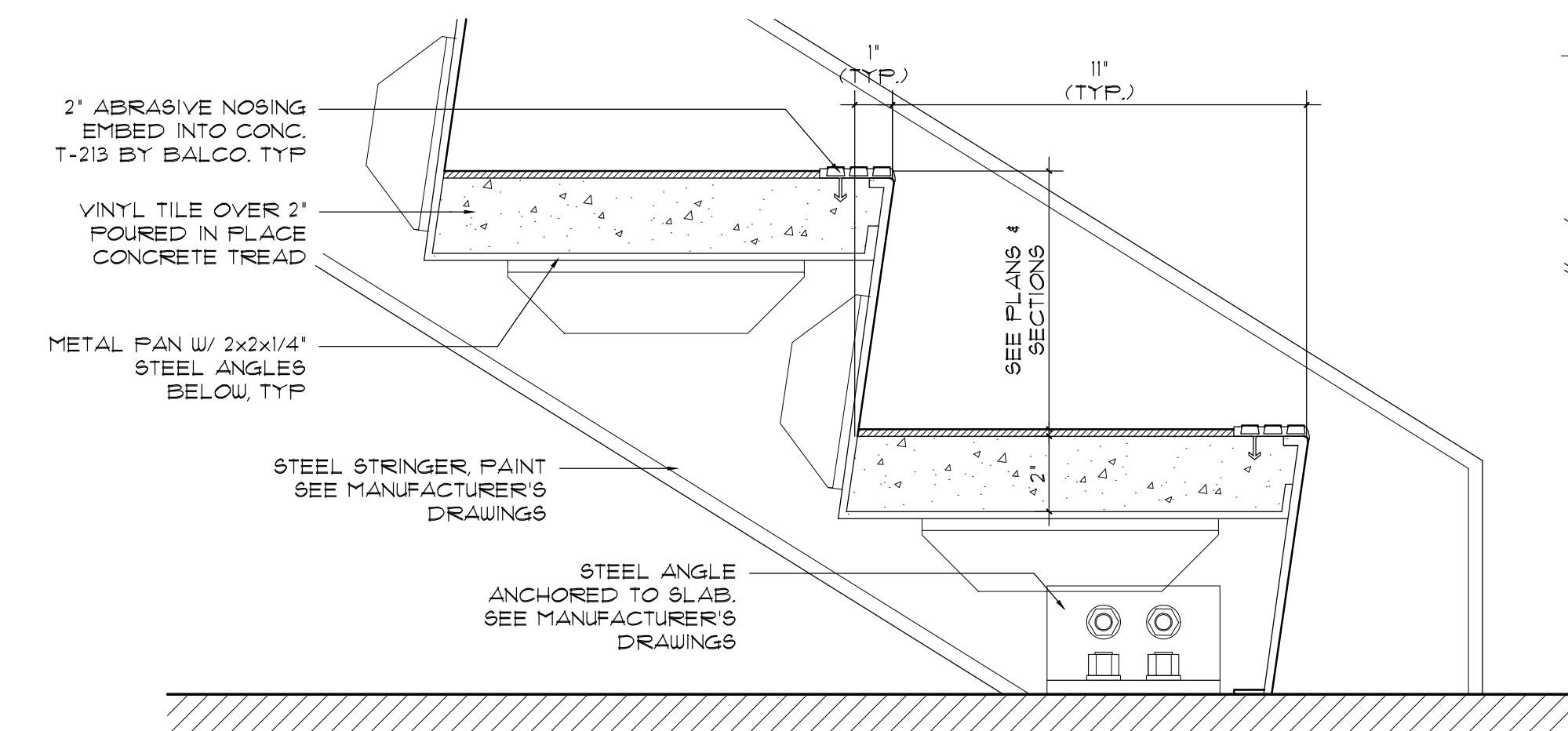
4 STAIR A - SECTION
SCALE: 3/8" = 1'-0"



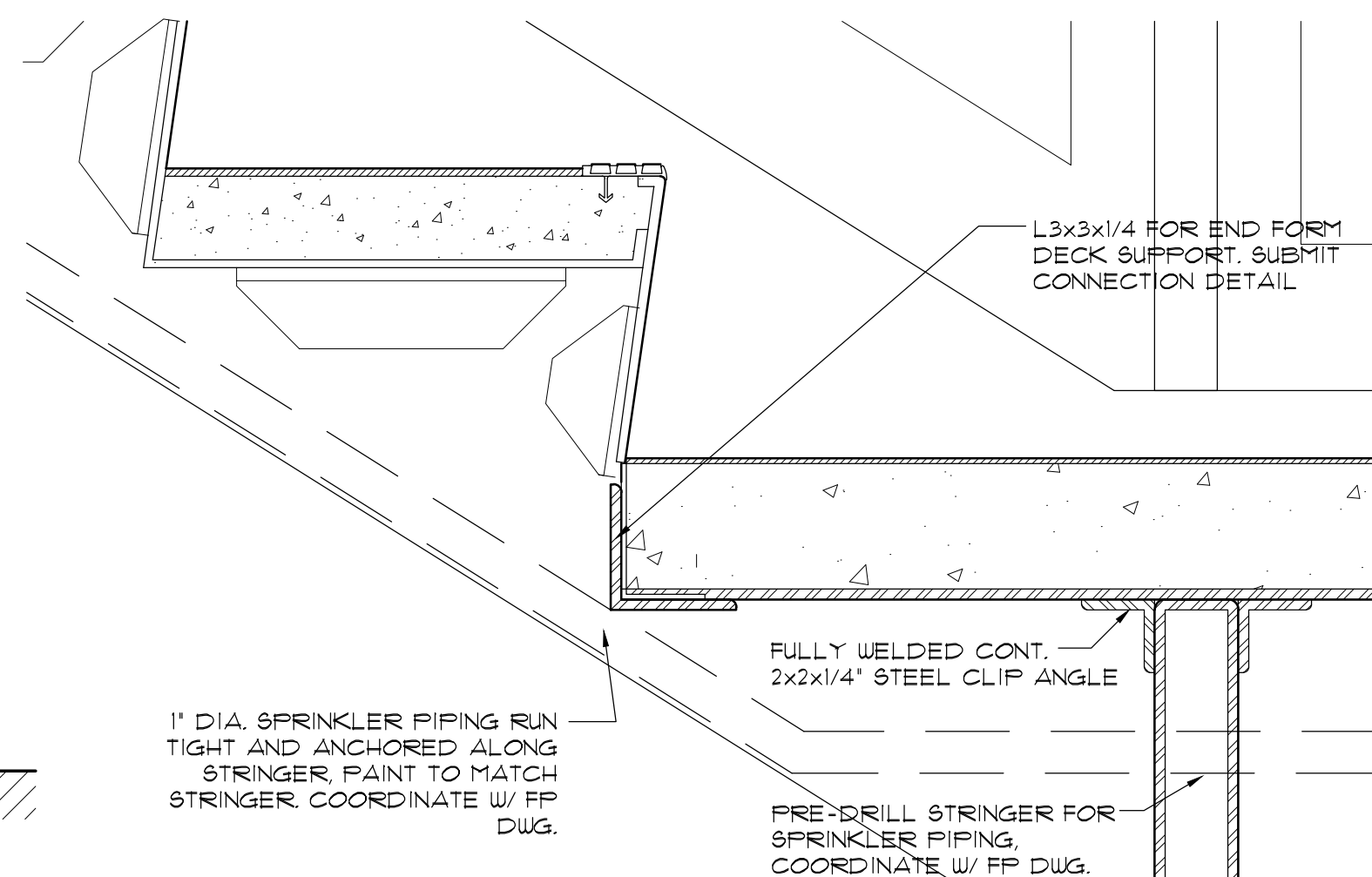
6 TYPICAL HANDRAIL DETAILS
SCALE: 1 1/2" = 1'-0"



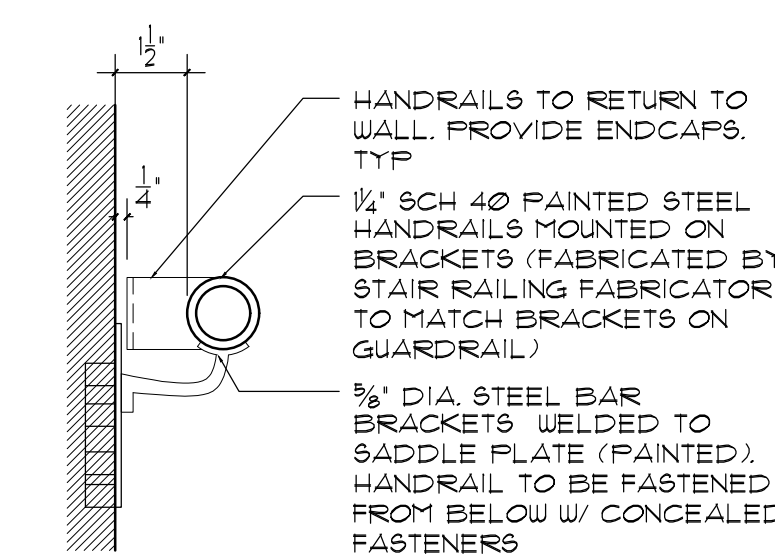
7 TYPICAL HANDRAIL DETAILS
SCALE: 1 1/2" = 1'-0"



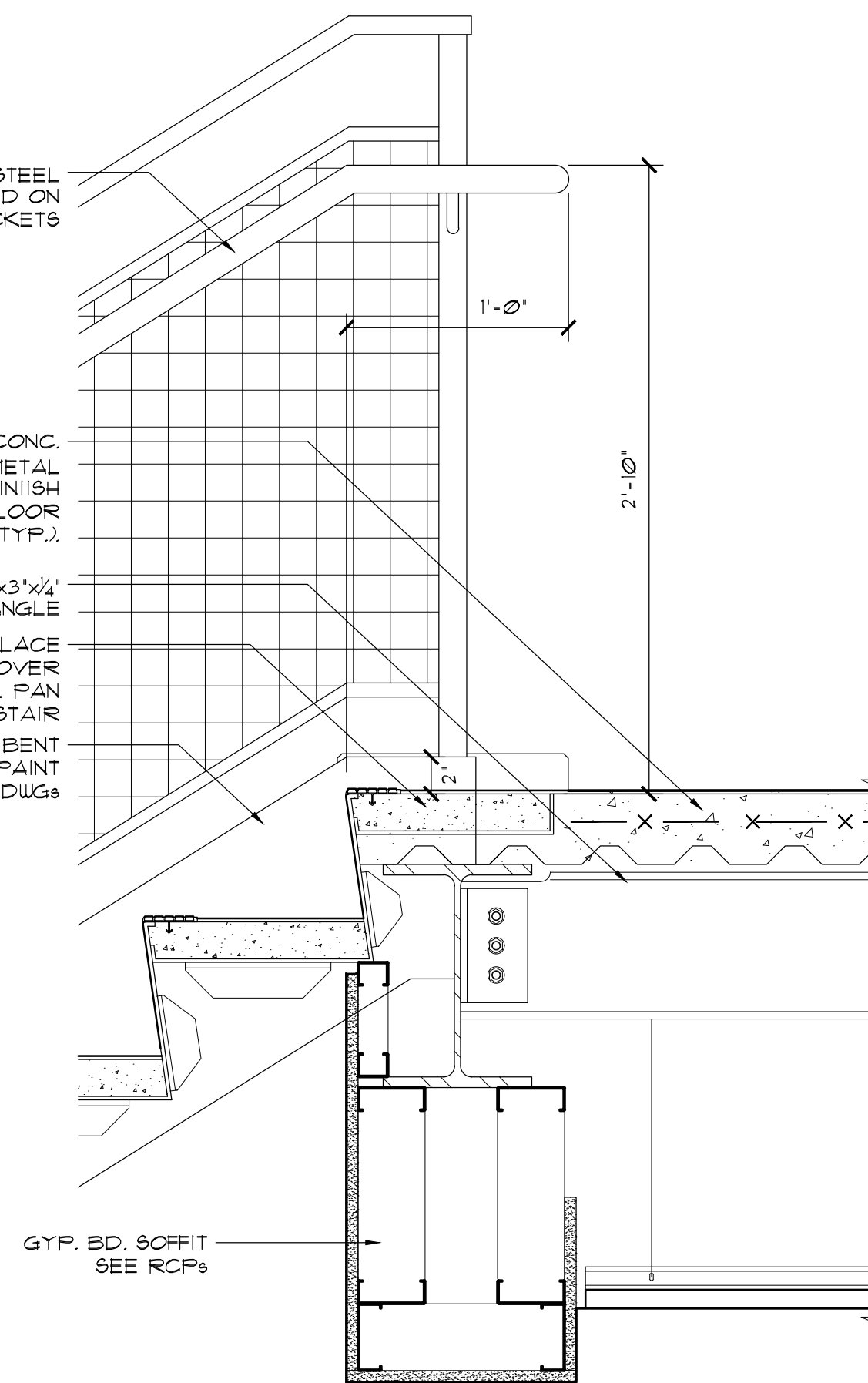
9 STAIR TREAD DETAIL
SCALE: 3" = 1'-0"



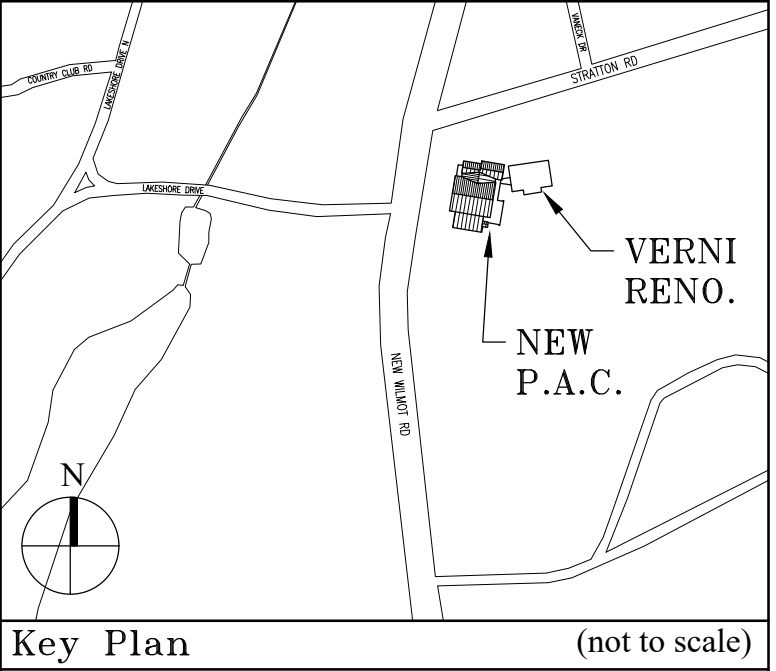
10 TYP. DETAIL AT BOTTOM OF STAIR RUN
SCALE: 3" = 1'-0"



11 HANDRAIL DETAIL
SCALE: 3" = 1'-0"



8 TYP. DETAIL AT TOP OF STAIR RUN
SCALE: 1-1/2" = 1'-0"



Key Plan (not to scale)

7.	6/01/2021	ISSUED FOR BID
6.	5/07/2021	RE-ISSUED FOR BUILDING PERMIT REVIEW
5.	2/01/2021	ISSUED FOR BUILDING PERMIT REVIEW
4.	10/14/2020	ISSUED FOR PLANNING BOARD REVIEW
3.	9/23/2020	RESUBMITTED FOR ZONING REVIEW
2.	8/28/2020	ISSUED FOR PRELIMINARY DOB REVIEW
1.	1/10/2020	ISSUED FOR DD ESTIMATE
No.	Date	Revision/Submission
STRUCTURAL & SITE CIVIL ENGINEER		
DOMINICK R PILLA		
ASSOCIATES, P.C.		
143 MAIN STREET		
NYACK, NY 10960		
845-727-7793		
MEP ENGINEER		ROOFING CONSULTANT
JMV CONSULTING		WATSKY ASSOCIATES
ENGINEERING, P.C.		20 MADISON AVENUE
37 W. 39 STREET, STE 703		VALHALLA, NY 10595
NEW YORK, NY 10018		914-948-3450
212-852-9855		

Stamp

Project Title
IONA PREPARATORY SCHOOL
ADDITION AND ALTERATION TO THE
PAUL VERNI FINE ARTS CENTER

Project Address
IONA PREPARATORY SCHOOL
255 Wilmot Road
New Rochelle, NY 10804

Drawing Title
STAIR A - PLANS,
SECTIONS AND DETAILS

Scale	Job No.	Date	Drawing No.
AS NOTED	1618	04/03/2019	A-500

Drawn

Peter Gisolfi Associates
Architects Landscape Architects, LLP
566 Warburton Avenue
Hastings on Hudson, NY 10706
914 478 3677

PETER GISOLFI ASSOCIATES