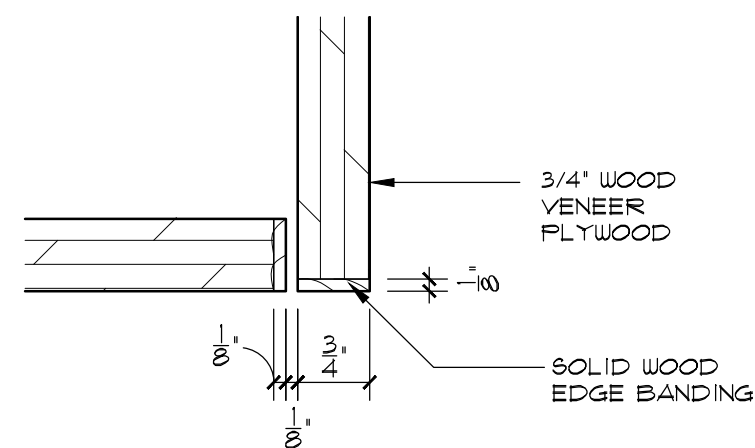
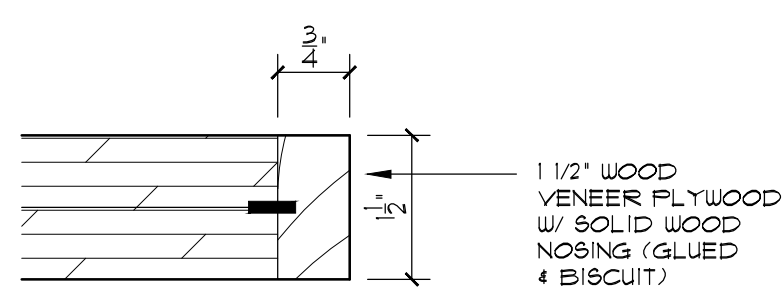


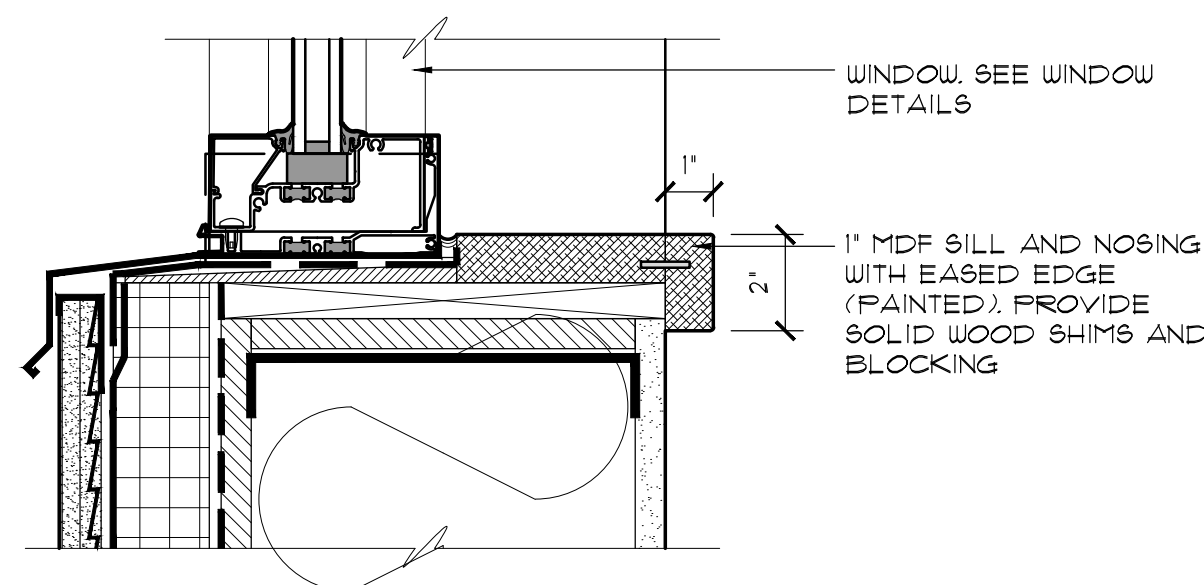
1 BASE BOARD, TACK BOARD TRIM & MDF MOLDING TYP. DETAIL
SCALE: 6"=1'-0"



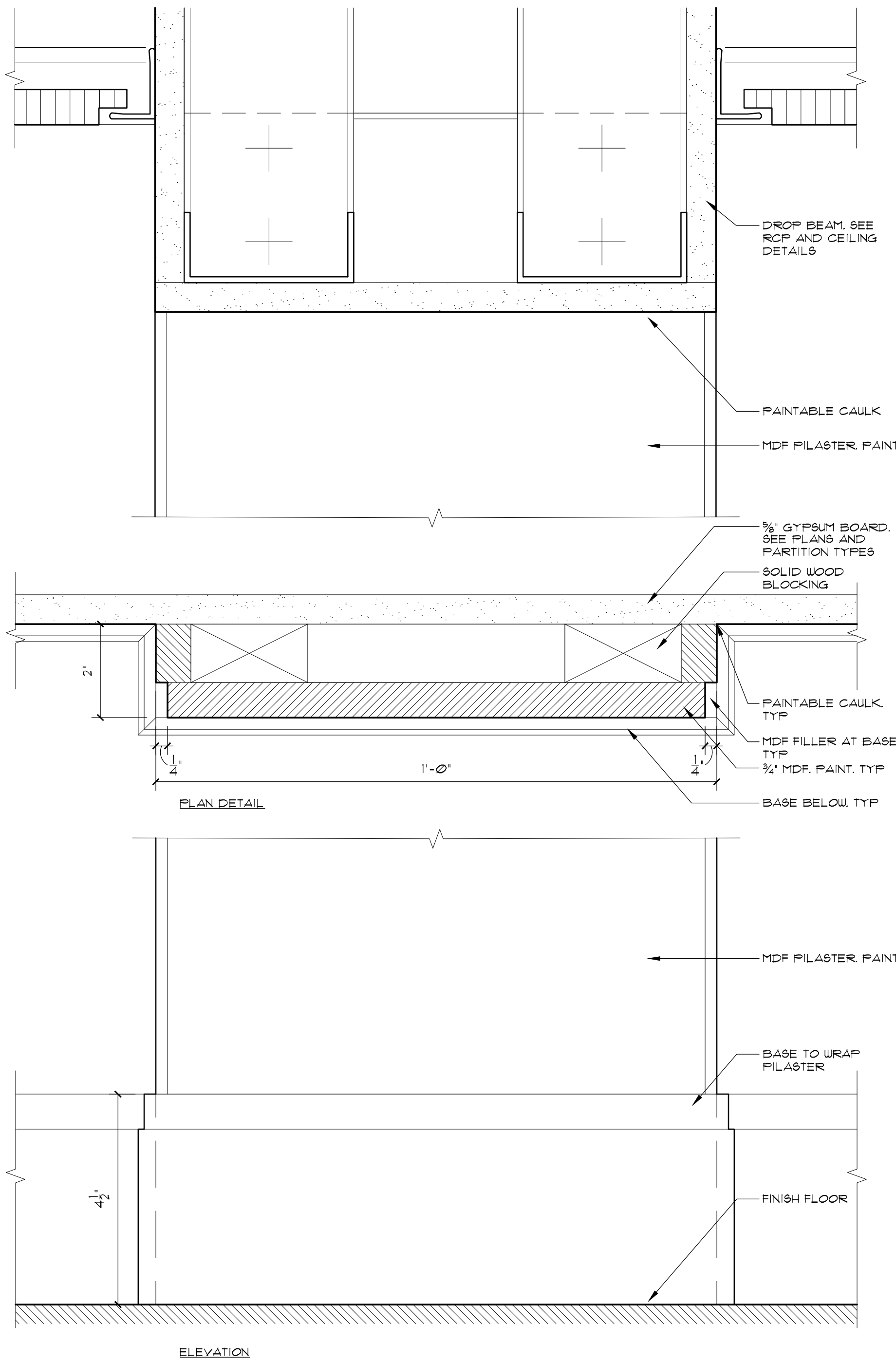
6 TYPICAL CABINET EDGE DETAIL
SCALE: 6"=1'-0"



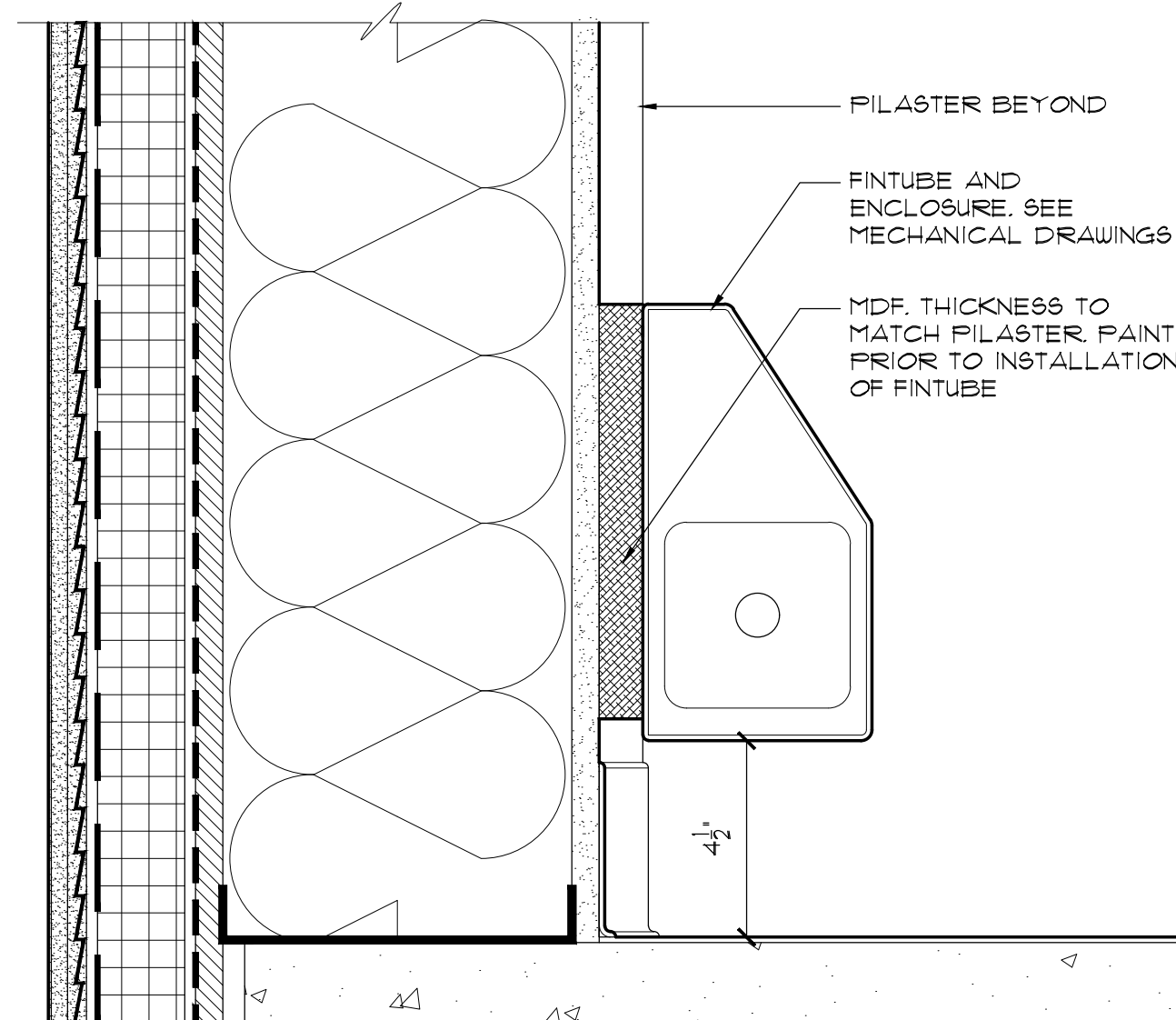
7 TYPICAL NOSING DETAIL
SCALE: 6"=1'-0"



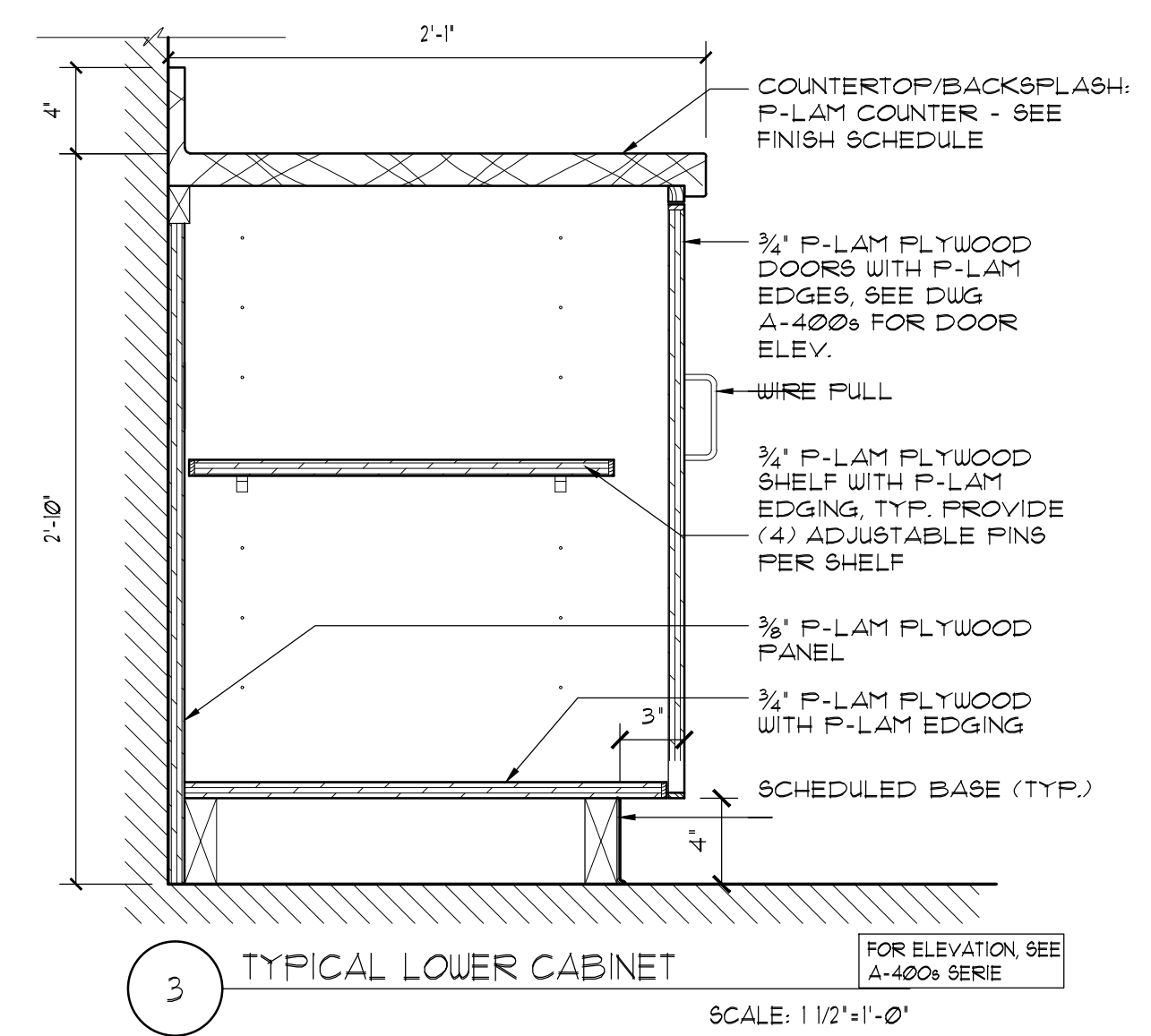
8 TYPICAL WINDOW SILL DETAIL
SCALE: 3"=1'-0"



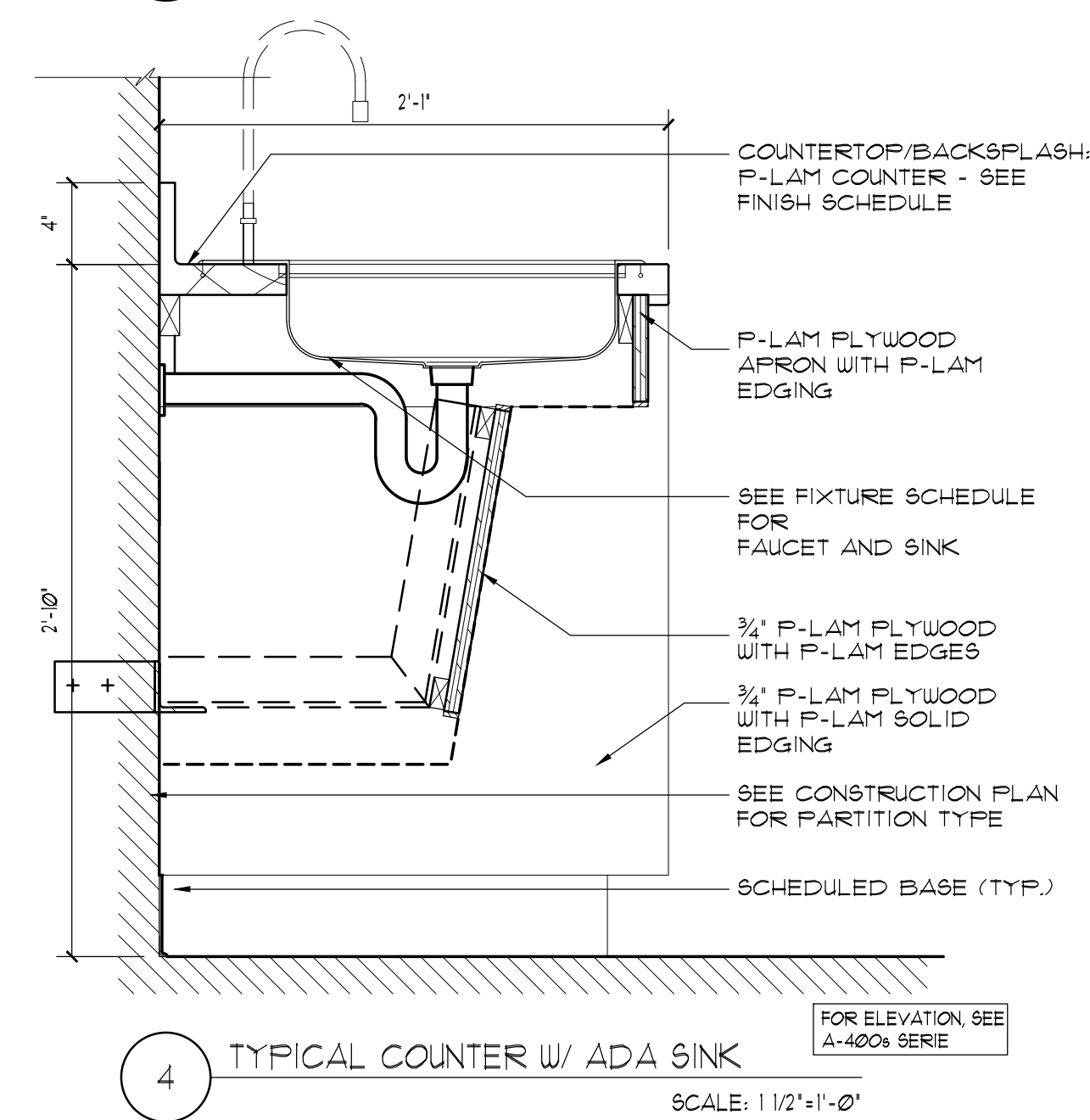
2 TYPICAL PILASTER DETAIL
AT CORRIDORS AND LOBBY
SCALE: 6"=1'-0"



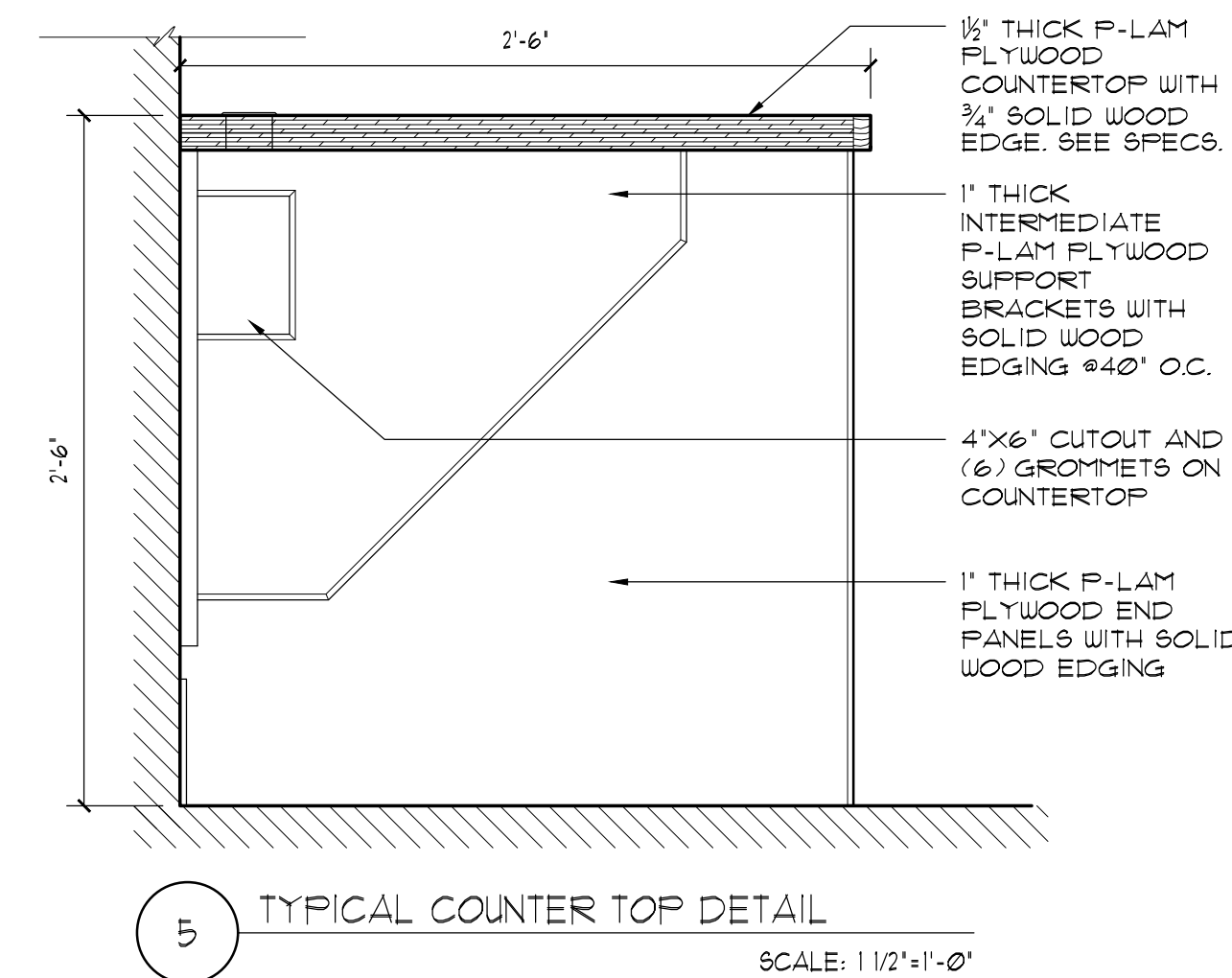
9 TYPICAL FIN TUBE ENCLOSURE DTL.
SCALE: 3"=1'-0"



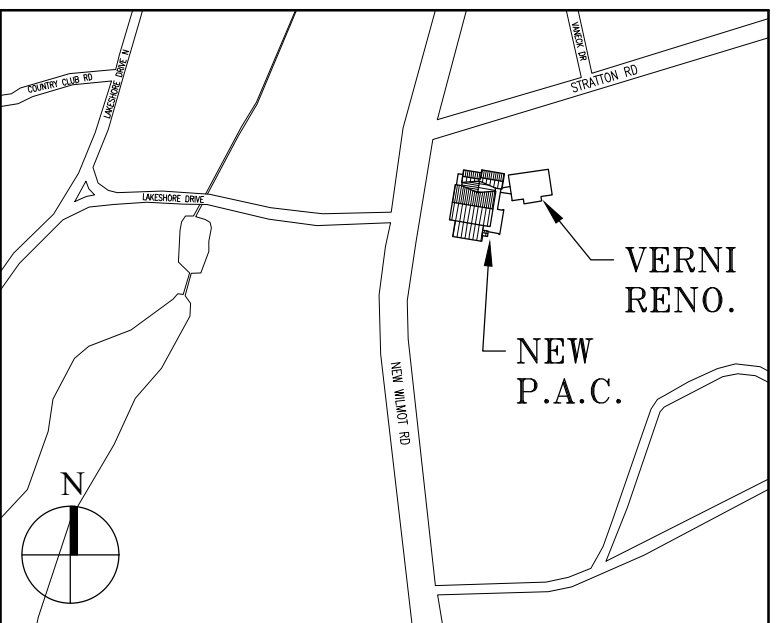
3 TYPICAL LOWER CABINET
SCALE: 1 1/2"=1'-0"



4 TYPICAL COUNTER W/ ADA SINK
SCALE: 1 1/2"=1'-0"



5 TYPICAL COUNTER TOP DETAIL
SCALE: 1 1/2"=1'-0"



Key Plan (not to scale)

7.	6/01/2021	ISSUED FOR BID
6.	5/07/2021	RE-ISSUED FOR BUILDING PERMIT REVIEW
5.	2/01/2021	ISSUED FOR BUILDING PERMIT REVIEW
4.	10/14/2020	ISSUED FOR PLANNING BOARD REVIEW
3.	9/23/2020	RESUBMITTED FOR ZONING REVIEW
2.	8/28/2020	ISSUED FOR PRELIMINARY DOB REVIEW
1.	1/10/2020	ISSUED FOR DD ESTIMATE
No.	Date	Revision/Submittal
STRUCTURAL & SITE CIVIL ENGINEER		
DOMINICK R PILLA		
ASSOCIATES, P.C.		
143 MAIN STREET		
NYACK, NY 10960		
845-727-7793		

MEP ENGINEER	ROOFING CONSULTANT
JMV CONSULTING	WATSKY ASSOCIATES
ENGINEERING, P.C.	20 MADISON AVENUE
37 W. 39 STREET, STE 703	VALHALLA, NY 10595
NEW YORK, NY 10018	914-948-3450
212-852-9855	

Stamp

Project Title
IONA PREPARATORY SCHOOL
ADDITION AND ALTERATION TO THE
PAUL VERNI FINE ARTS CENTER

Project Address
IONA PREPARATORY SCHOOL
255 Wilmot Road
New Rochelle, NY 10804

Drawing Title

MILLWORK

Scale	Job No.	Date	Drawing No.
AS NOTED	1618	04/03/2019	A-600

Drawn

Peter Gisolfi Associates
Architects Landscape Architects, LLP
566 Warburton Avenue
Hastings on Hudson, NY 10706
914 478 3677

PETER GISOLFI ASSOCIATES