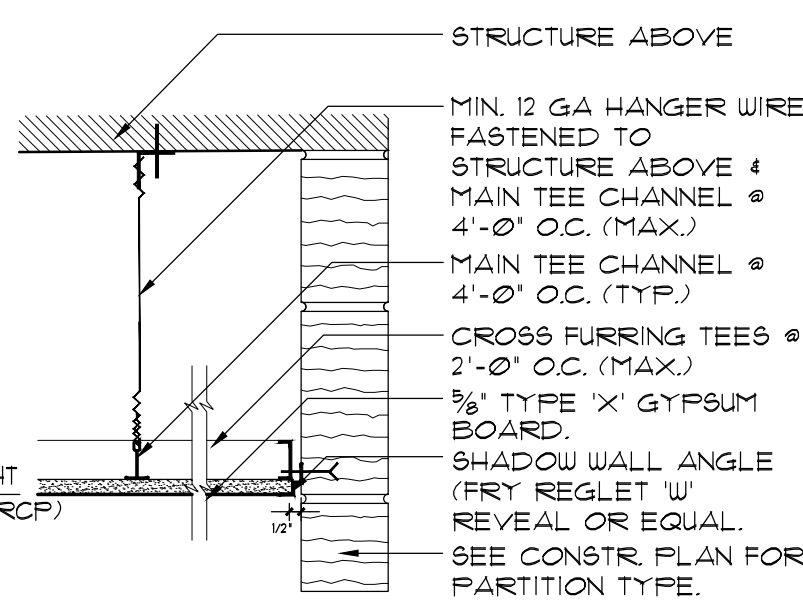
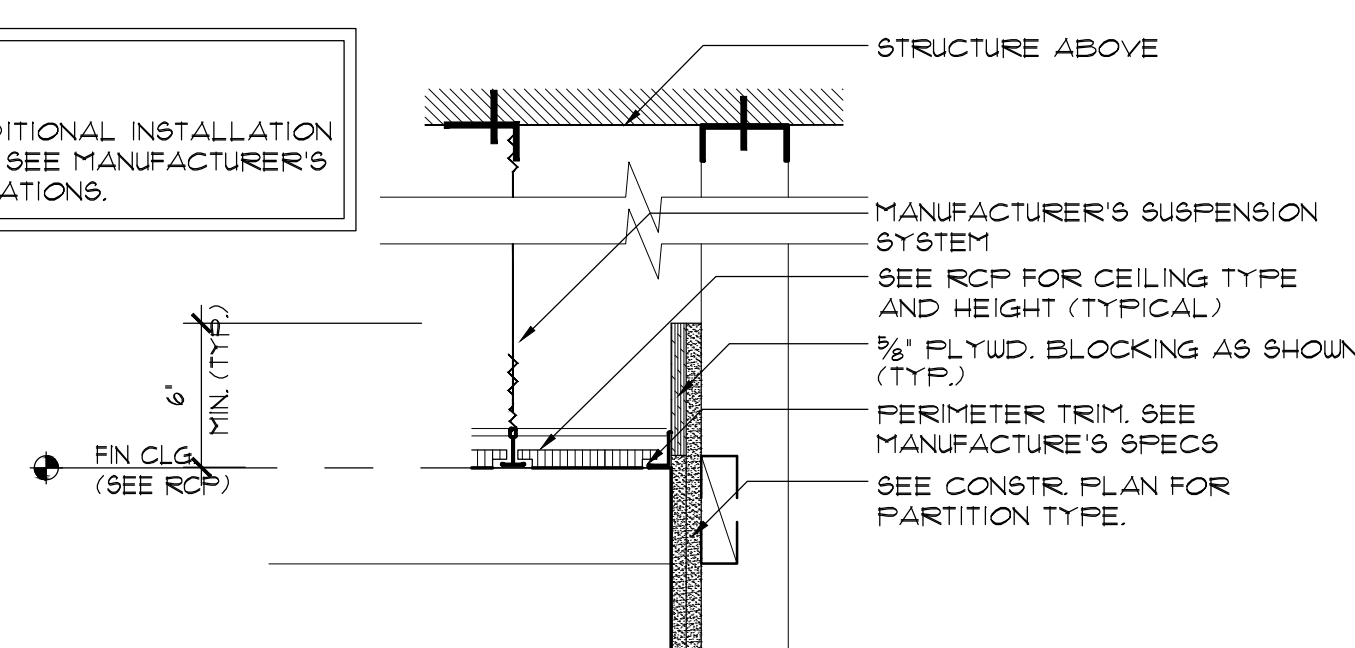


DETAIL AT GYP. BD. WALL

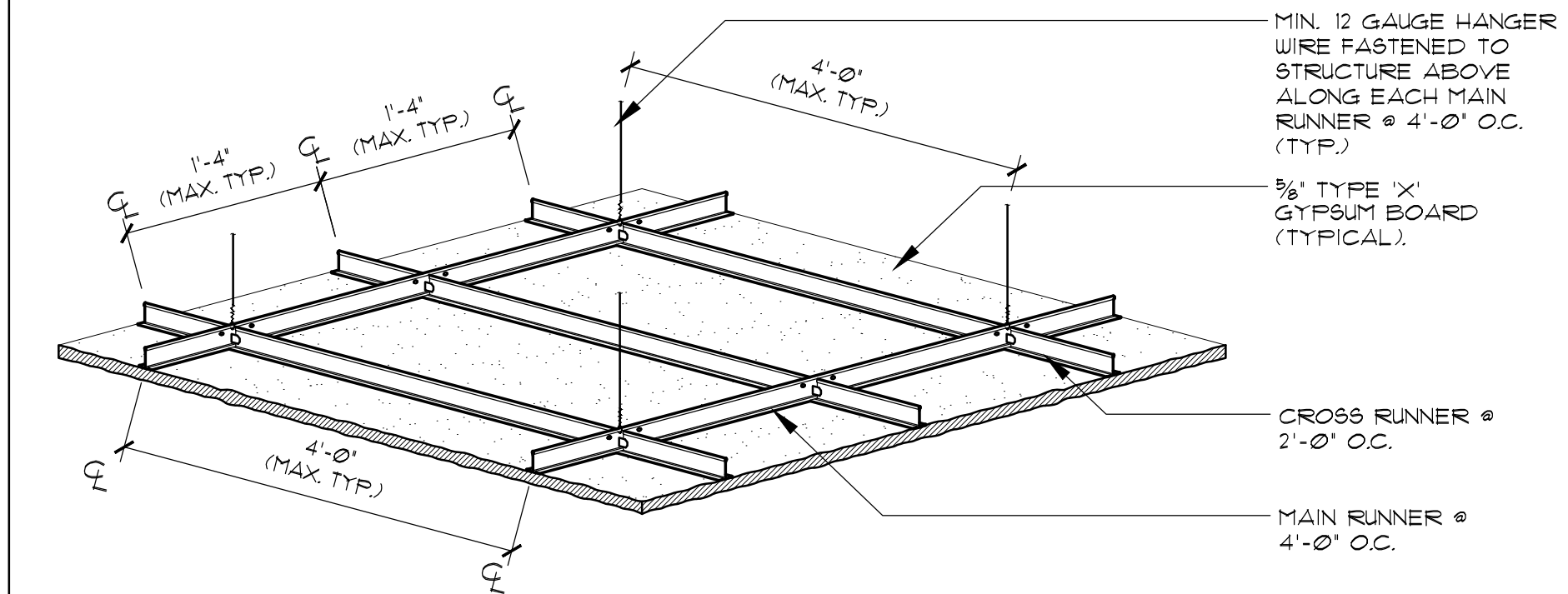


DETAIL AT MASONRY WALL

NOTES:
FOR ADDITIONAL INSTALLATION DETAILS, SEE MANUFACTURER'S SPECIFICATIONS.

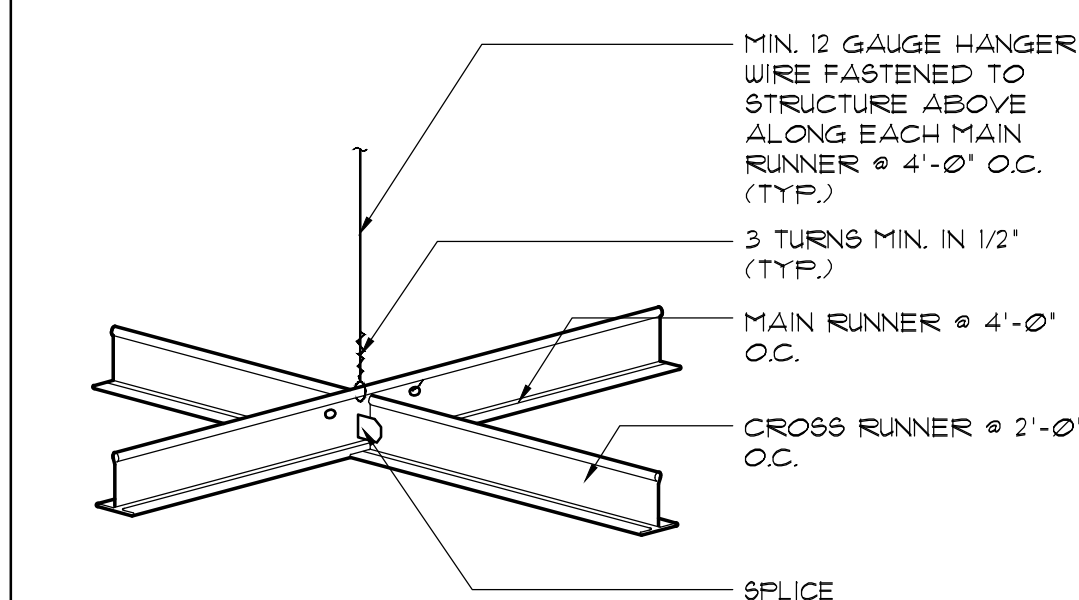


SLAT CEILING DETAIL
SCALE: 1 1/2"=1'-0"



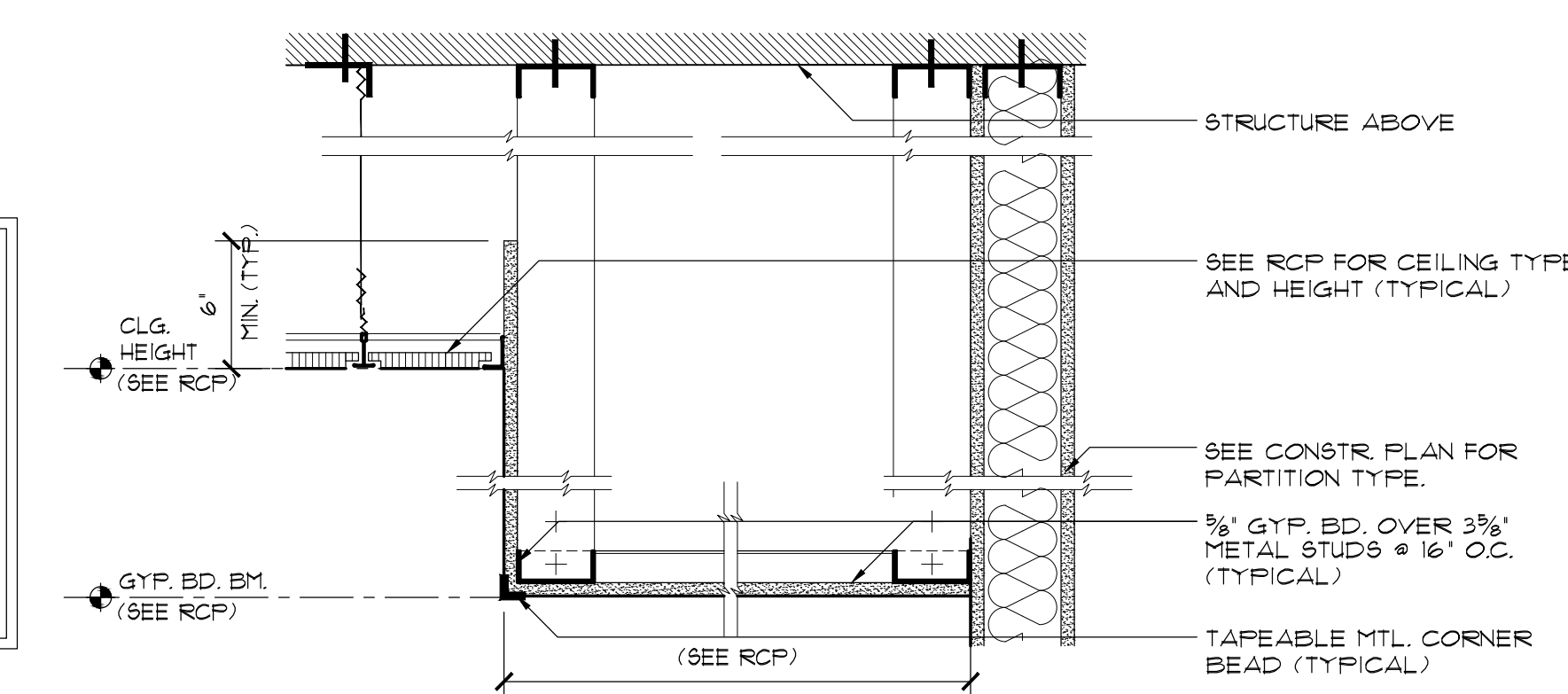
GRID DIAGRAM (N.T.S.)

HUNG GYPSUM BOARD CEILING DETAIL
SCALE: 1 1/2"=1'-0"

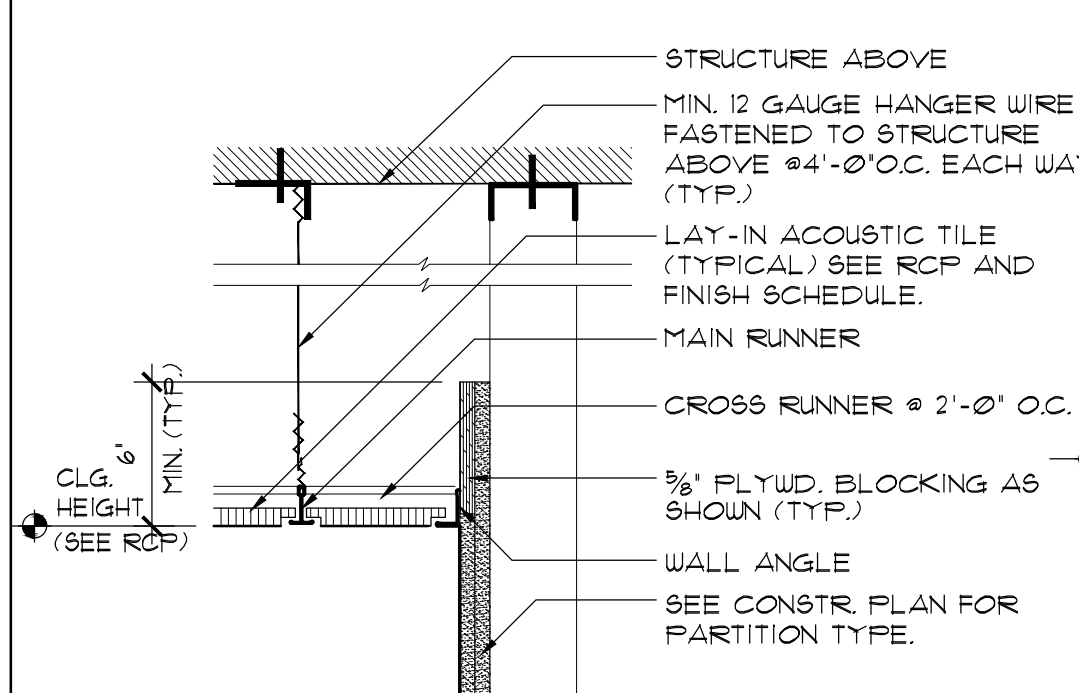


GRID DIAGRAM (N.T.S.)

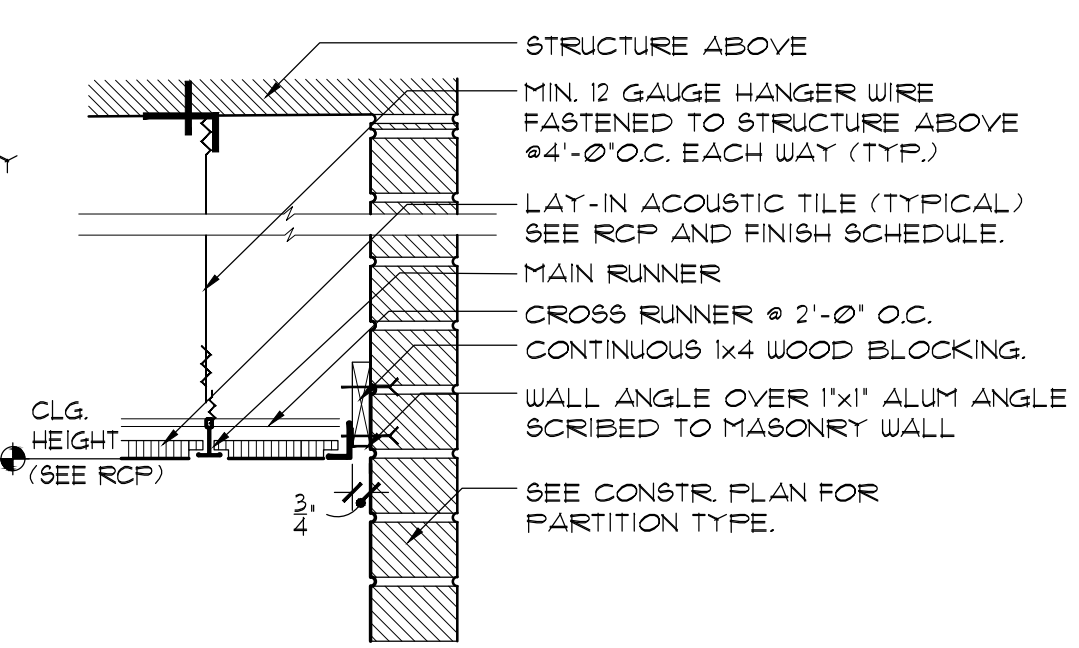
NOTES:
ALL 2' x 2' AND OR 2' x 4' CEILING LIGHT FIXTURES AND HVAC AIR REGISTERS SHALL BE SUPPORTED BY A MINIMUM OF FOUR (4) HANGERS AT OPPOSITE CORNERS. CEILING SYSTEM SHALL NOT SUPPORT OTHER ITEMS.
HANGERS: HANGERS FOR SUSPENDED CEILINGS SHALL BE FASTENED TO THE METAL DECK, JOISTS OR CONCRETE SLAB. HANGERS SHALL BE SADDLE TIED AROUND MAIN RUNNERS TO DEVELOP THE FULL STRENGTH OF THE HANGERS.



GYPSUM BOARD SOFFIT DETAIL
SCALE: 1 1/2"=1'-0"

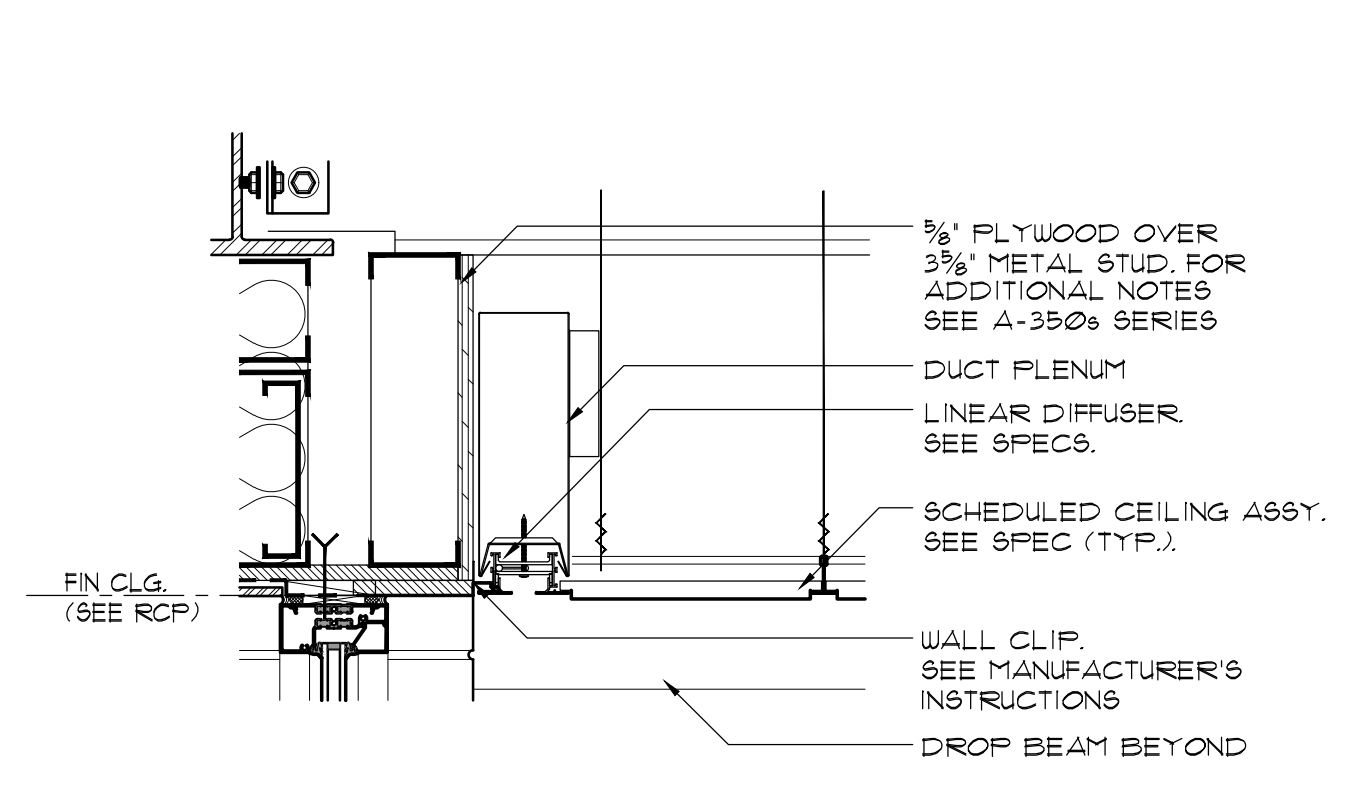


DETAIL AT GYP. BD. WALL

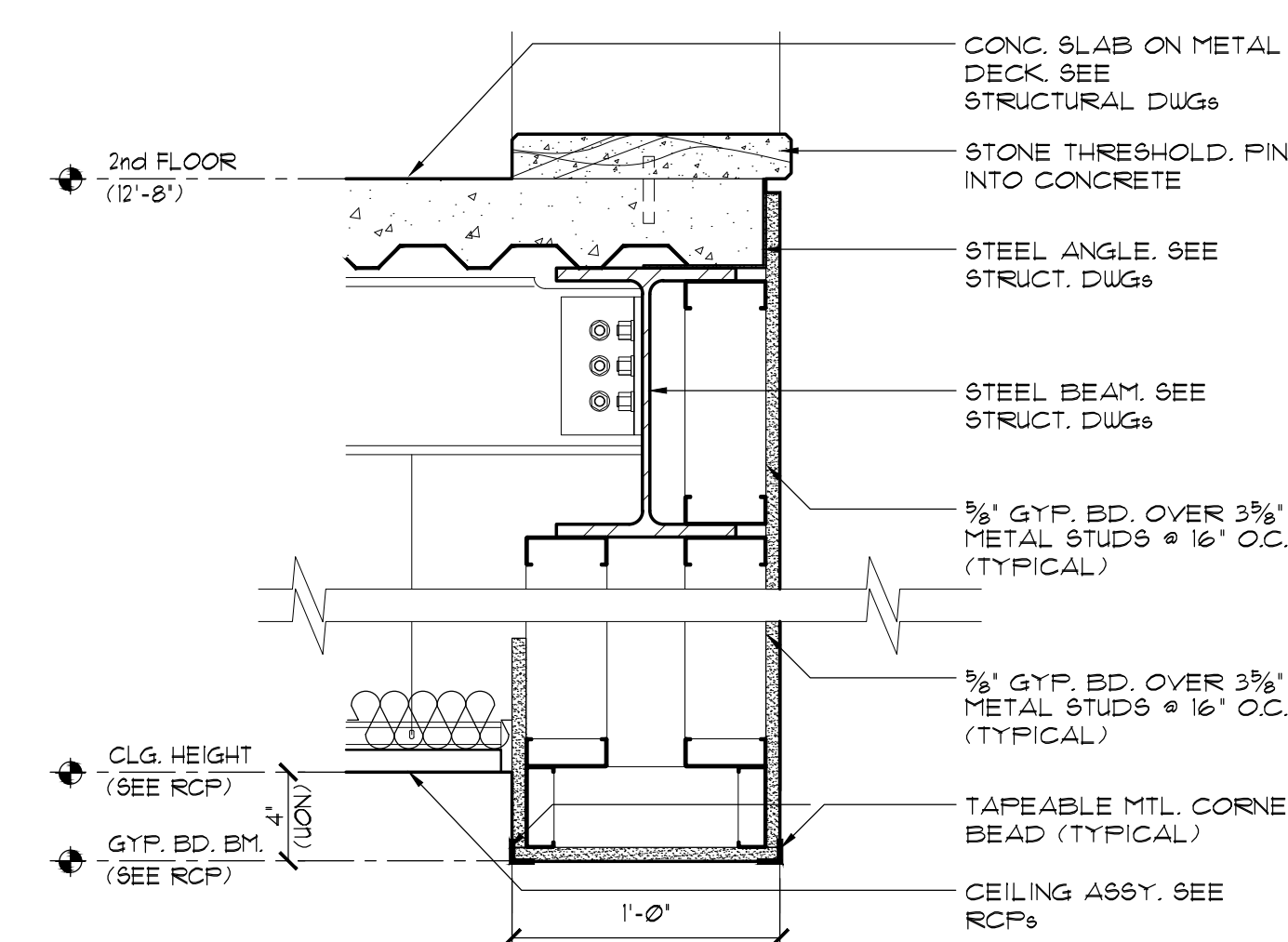


DETAIL AT MASONRY WALL

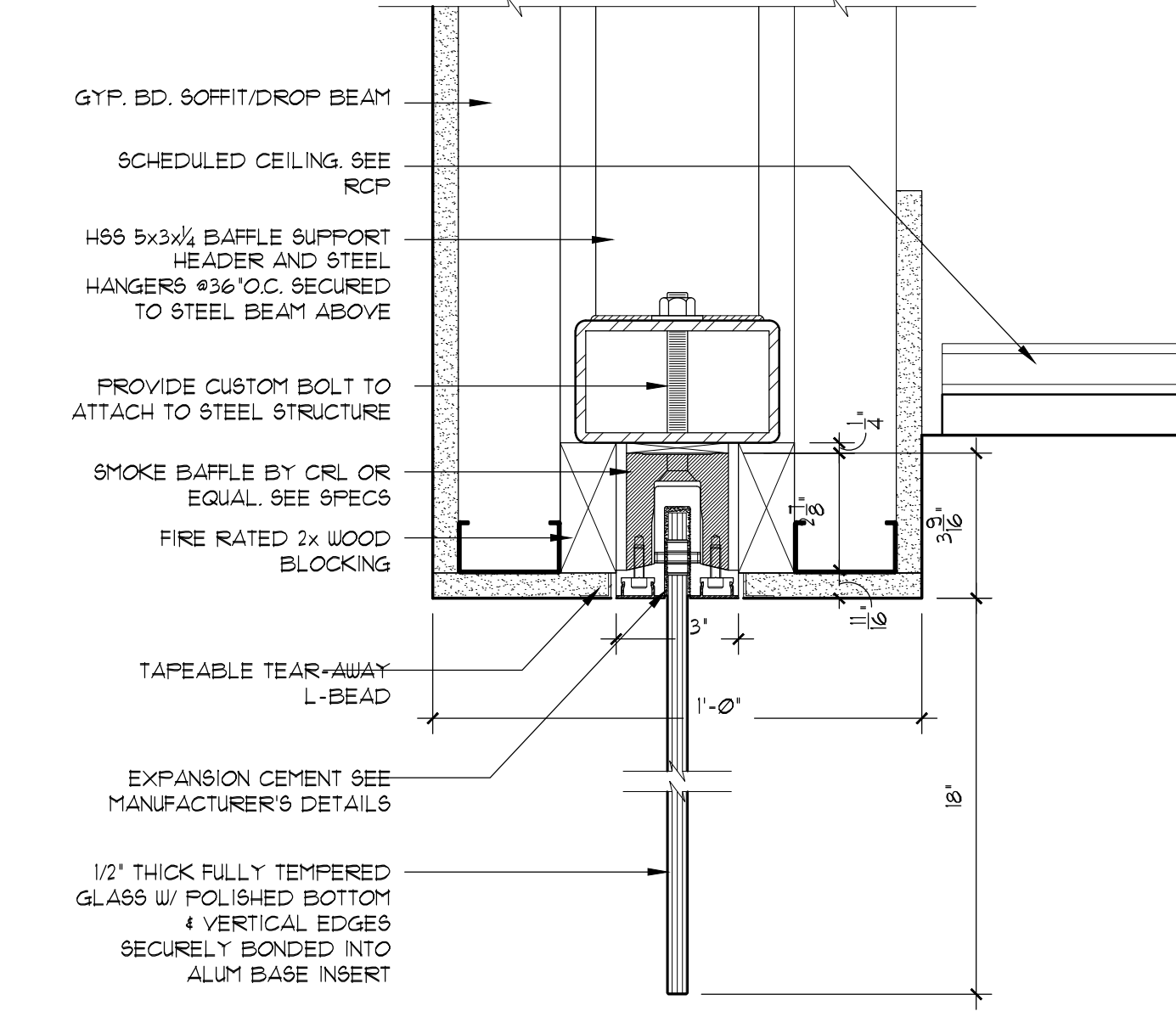
ACOUSTIC TILE LAY-IN CEILING DETAIL
SCALE: 1 1/2"=1'-0"



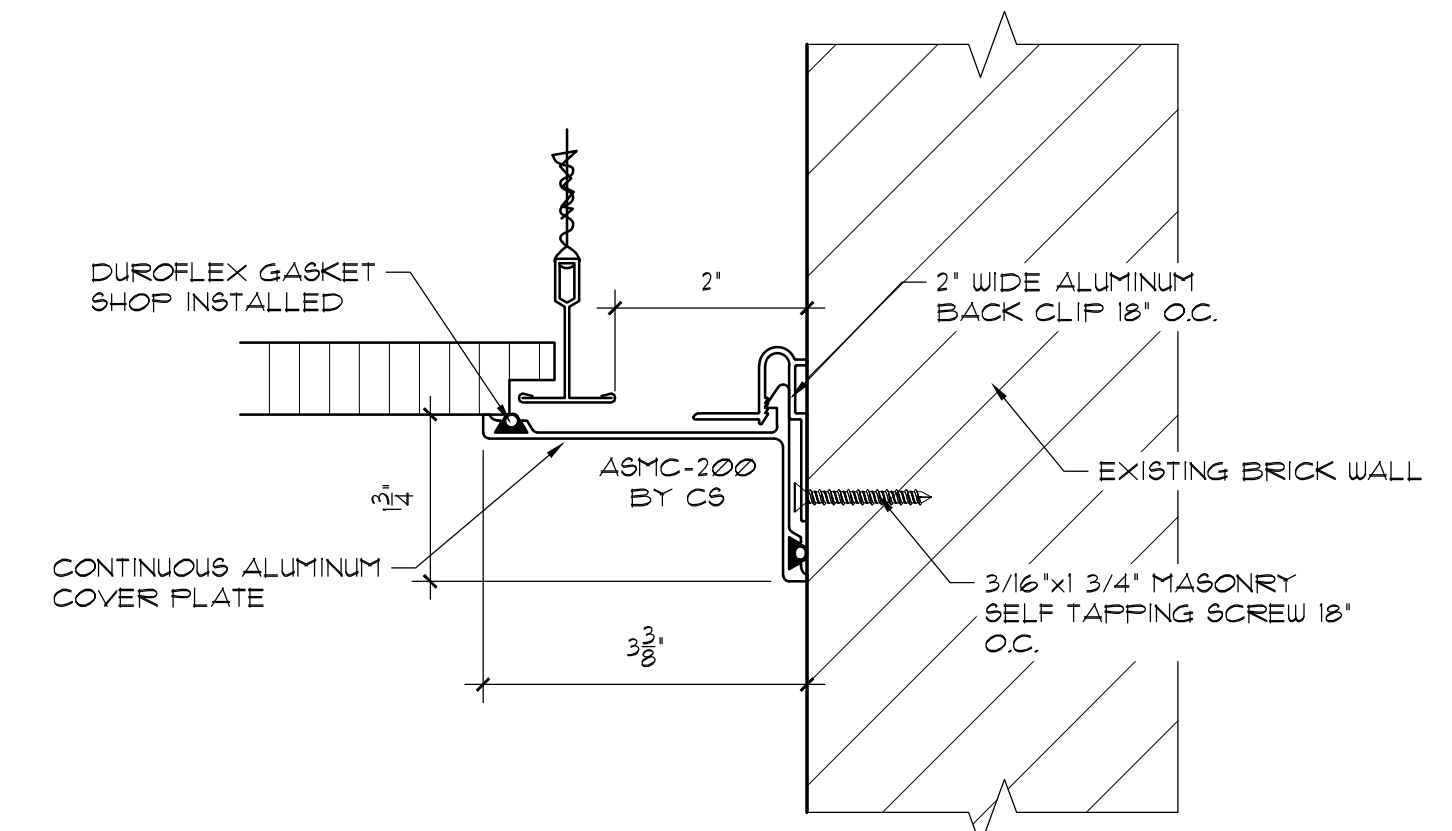
LOBBY LINEAR DIFFUSER DETAIL
SCALE: 1 1/2"=1'-0"



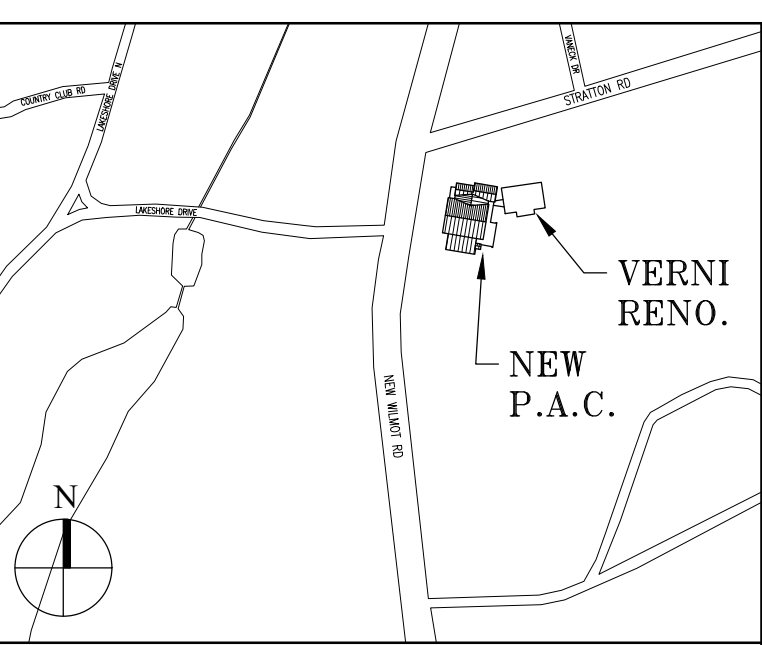
GYPSUM BOARD SOFFIT DETAIL
SCALE: 1 1/2"=1'-0"



LOBBY STAIR SMOKE BAFFLE DETAIL
SCALE: 3"=1'-0"



CEILING EXPANSION JOINT DETAIL
SCALE: 6"=1'-0"



Key Plan (not to scale)

7.	6/01/2021	ISSUED FOR BID
6.	5/07/2021	RE-ISSUED FOR BUILDING PERMIT REVIEW
5.	2/01/2021	ISSUED FOR BUILDING PERMIT REVIEW
4.	10/14/2020	ISSUED FOR PLANNING BOARD REVIEW
3.	9/23/2020	RESUBMITTED FOR ZONING REVIEW
2.	8/28/2020	ISSUED FOR PRELIMINARY DOB REVIEW
1.	1/10/2020	ISSUED FOR DD ESTIMATE
No.	Date	Revision/Submission
STRUCTURAL & SITE CIVIL ENGINEER		
DOMINICK R PILLA ASSOCIATES, P.C.		
143 MAIN STREET		
NYACK, NY 10960		
845-727-7793		
MEP ENGINEER		ROOFING CONSULTANT
JMV CONSULTING		WATSKY ASSOCIATES
ENGINEERING, P.C.		20 MADISON AVENUE
37 W. 39 STREET, STE 703		VALHALLA, NY 10595
NEW YORK, NY 10018		914-948-3450
212-852-9855		

Stamp

Project Title
IONA PREPARATORY SCHOOL
ADDITION AND ALTERATION TO THE
PAUL VERNI FINE ARTS CENTER

Project Address
IONA PREPARATORY SCHOOL
255 Wilmot Road
New Rochelle, NY 10804

Drawing Title
CEILING DETAILS

Scale Job No. Date Drawing No.
AS NOTED 1618 04/03/2019 A-700

Drawn

Peter Gisolfi Associates
Architects Landscape Architects, LLP
566 Warburton Avenue
Hastings on Hudson, NY 10706
914 478 3677

PETER GISOLFI ASSOCIATES