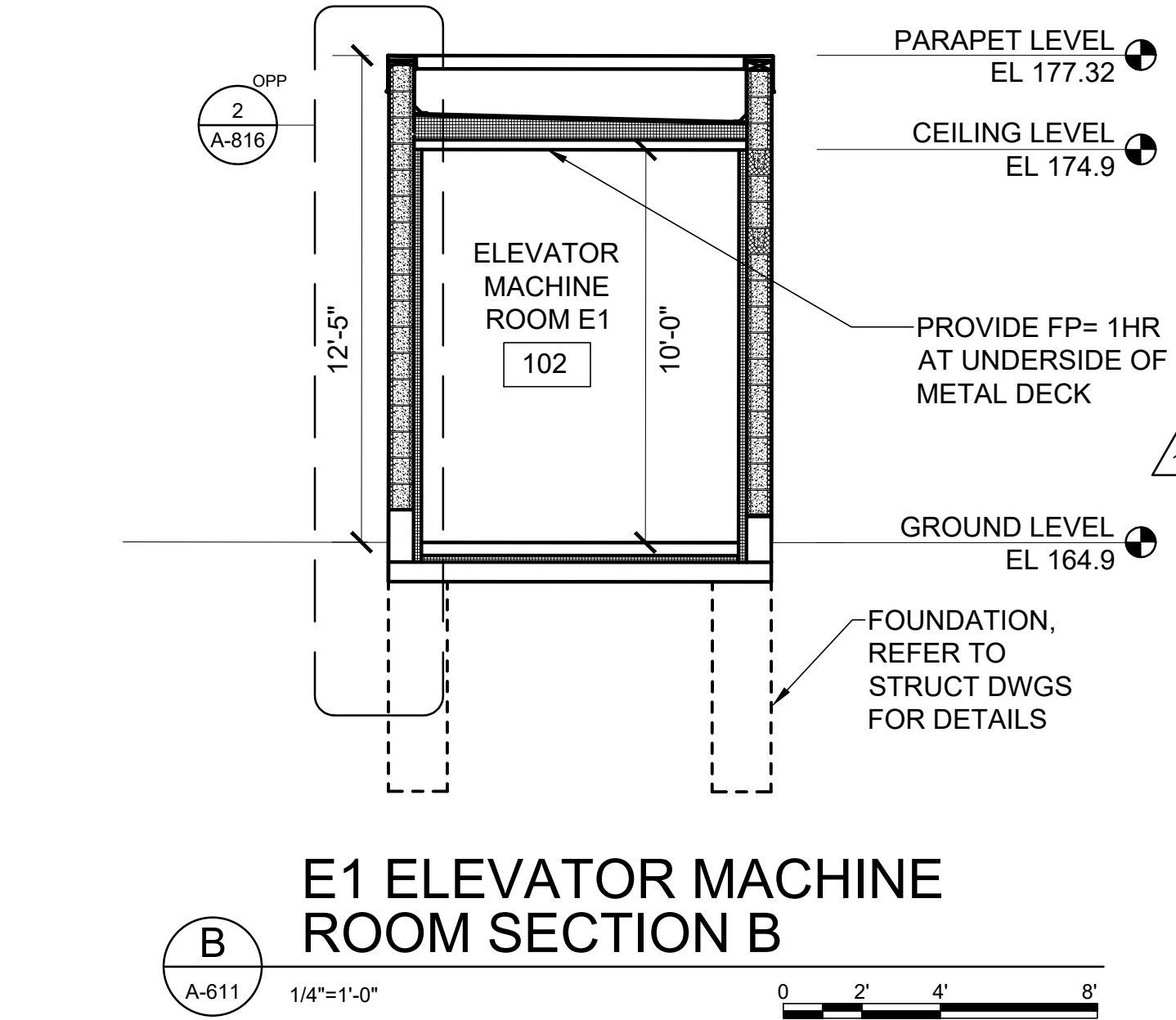
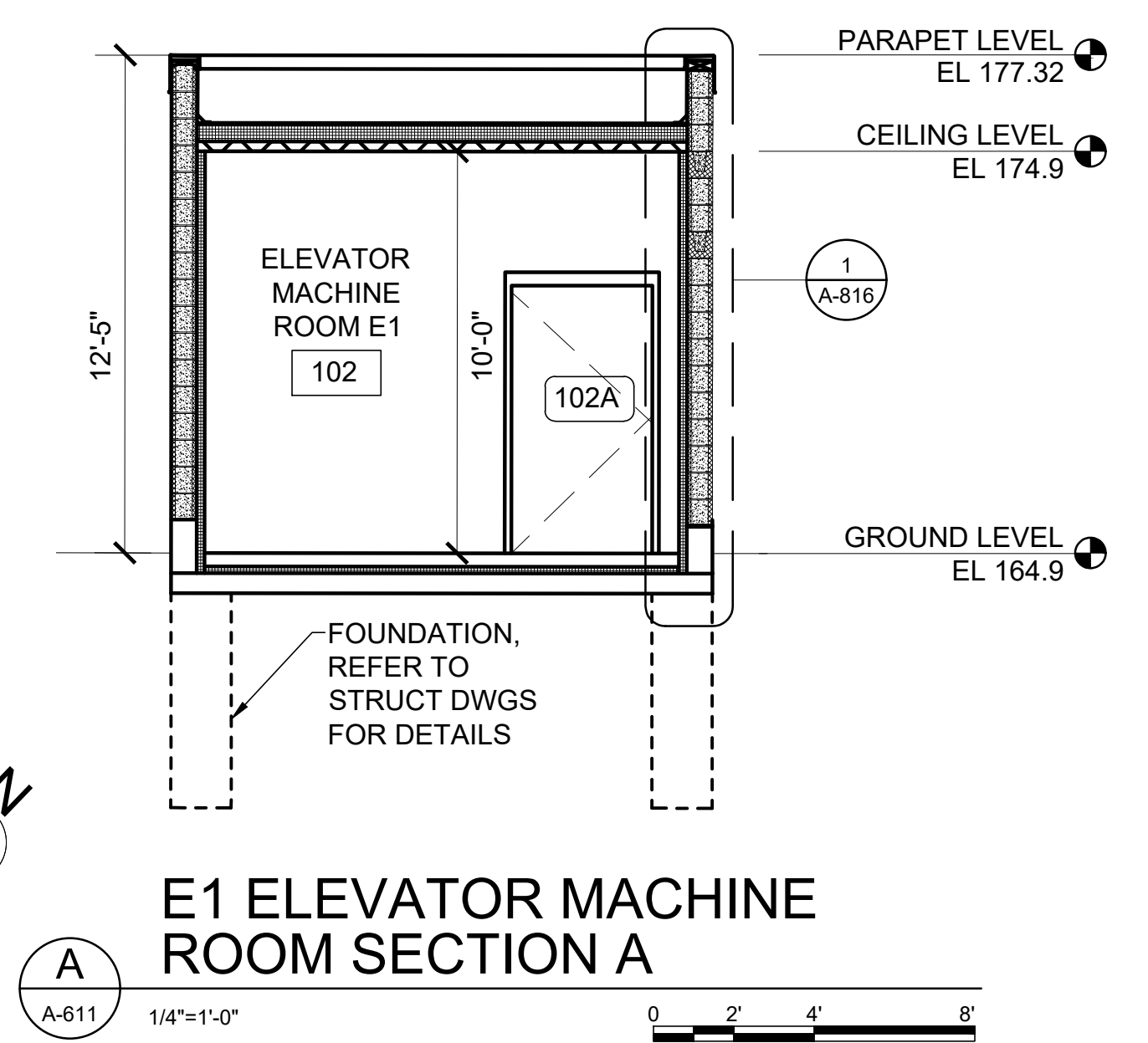


3 ENLARGED E1 ELEVATOR MACHINE ROOM NORTH ELEVATION  
A-611 1/4"=1'-0" 0 2' 4' 8"

4 ENLARGED E1 ELEVATOR MACHINE ROOM EAST ELEVATION  
A-611 1/4"=1'-0" 0 2' 4' 8"

5 ENLARGED E1 ELEVATOR MACHINE ROOM SOUTH ELEVATION  
A-611 1/4"=1'-0" 0 2' 4' 8"

6 ENLARGED E1 ELEVATOR MACHINE ROOM WEST ELEVATION  
A-611 1/4"=1'-0" 0 2' 4' 8"



A ENLARGED E1 ELEVATOR MACHINE ROOM SECTION A  
A-611 1/4"=1'-0" 0 2' 4' 8"

B ENLARGED E1 ELEVATOR MACHINE ROOM SECTION B  
A-611 1/4"=1'-0" 0 2' 4' 8"

LEGEND:  
 16" LIGHT COLOR  
 8" LIGHT COLOR

100% RFC SUBMISSION

DESIGNED	PL
DRAWN	GD
CHECKED	EC
APPROVED	PL

NO.		DATE		REVISION			CONFORMED		
2	09/27/21	ADDENDUM 5	VJD	PL	PL				
1	09/10/21	ADDENDUM 3	VJD	PL	PL				

225 PARK AVENUE SOUTH,  
NEW YORK, NY 10003

420 Lexington Avenue  
New York, NY 10017

TITLE  
 HARTSDALE AND SCARSDALE STATION  
 IMPROVEMENTS  
 ENLARGED ELEVATOR E1  
 MACHINE ROOM PLANS,  
 ELEVATIONS AND SECTIONS  
 HARTSDALE STATION

CONTRACT NO. 1000106733	
SCALE 1/4" = 1'-0"	DATE 08/03/2021
DRAWING NO. HTD-A-611	
SHEET 35 OF 99	