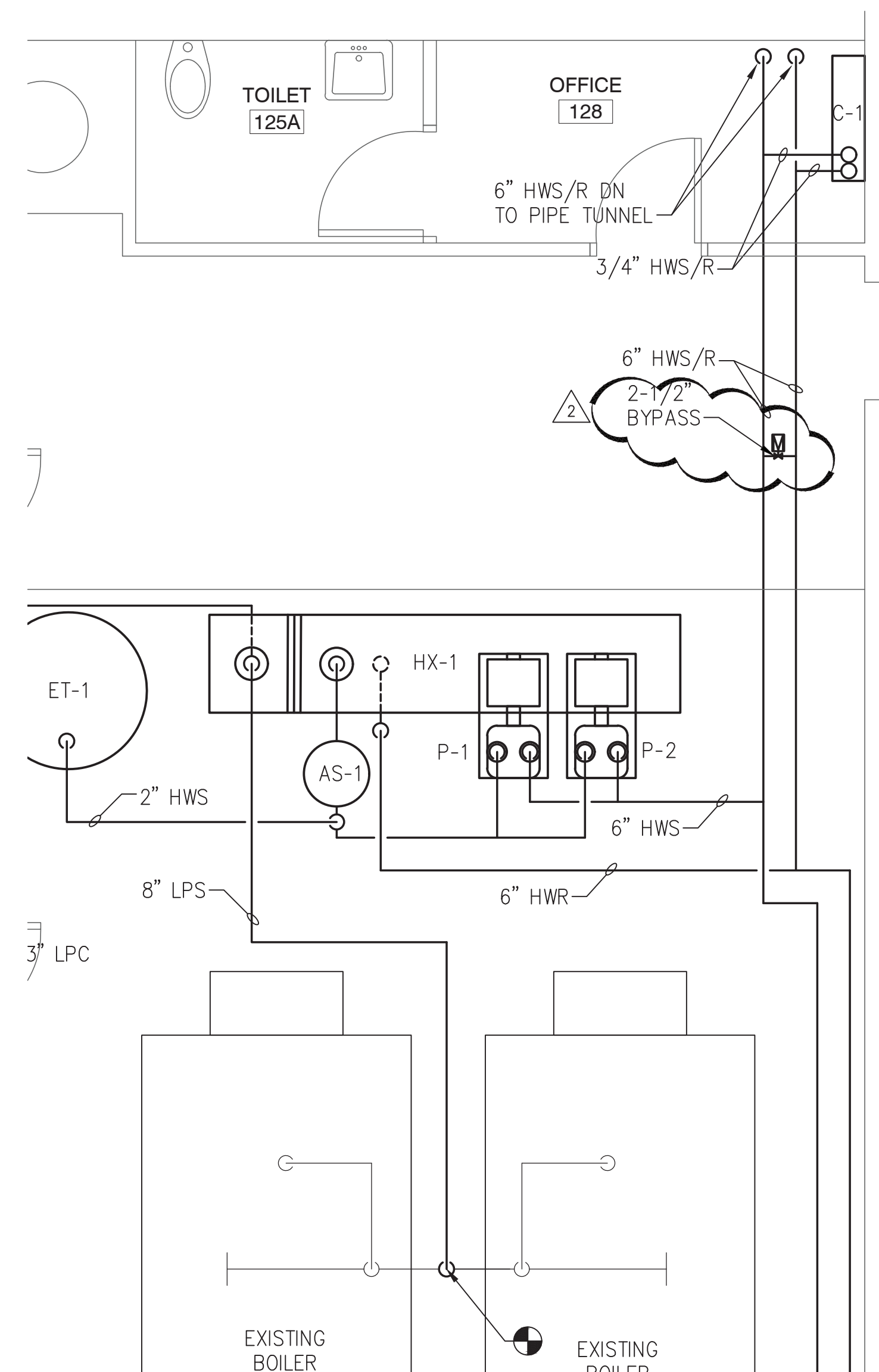


1 HVAC PLAN
MES-M124 SCALE: 1/8" = 1'-0"



2 HVAC MECH. EQUIP RM. PLAN
MES-M124 SCALE: Custom

KEYED NOTES

- ① NOT USED.
- ② EXISTING CONVECTOR HOUSING TO REMAIN. REPLACE ALL STEAM PIPING AND HEATING ELEMENTS WITH HYDRONIC. PROVIDE LINE SIZE MODULATING THERMOSTATIC VALVE WITH DDC ACTUATOR.
- ③ PROVIDE FINNED TUBE RADIATION (FTR-1) AND ENCLOSURE. SEE DETAIL 9/MES-M501. ENCLOSURE TO GO FROM UV TO WALL. ACTIVE FIN TO COME WITHIN 12 INCHES OF EACH END. FIELD VERIFY DIMENSIONS.
- ④ PROVIDE WITH UNIT VENTILATOR. PIPING TO BE SUPPLIED FROM PIPE TUNNEL BELOW. CONNECT TO EXISTING LOWVOLT. PROVIDE UNIT VENTILATOR WITH FALSE BACK AND INSULATED PIPE ENCLOSURE.
- ⑤ PROVIDE CONVECTOR. PIPING TO BE SUPPLIED FROM PIPE TUNNEL BELOW.

GENERAL NOTES

1. UNLESS OTHERWISE NOTED, UV'S SHALL REUSE EXISTING ON A LOUVER/GRIFFE. PROVIDED, AN AIRIGHT ADAPTER TO FIT THE UV'S ON INLET.
2. EXISTING FLOOR TILES CONTAIN ASBESTOS MATERIALS. IF THE ACM MUST BE DISTURBED TO PENETRATE FLOOR OR ABOVE REASON, COORDINATE WORK WITH OWNER AND ENGINEER. OWNER SHALL PROVIDE THE ABATEMENT BY CERTIFIED PERSONNEL.
3. WHEN SETTING UV'S OR CASEWORK LEVEL FLOOR AS NECESSARY WITH NON ACM FLOOR TILES.
4. CONTRACTOR SHALL VERIFY CONDITIONS IN FIELD TO PROVIDE MATERIAL AND LABOR NECESSARY FOR EACH AVAILABLE CONDITION. EXISTING CONDITIONS MAY VARY FROM TYPICAL DETAILS.
5. EXPANSION JOINTS SHALL HAVE A MINIMUM 1" COMPRESSION AND 1/3" TENSION CAPACITY UNLESS OTHERWISE NOTED.

ARCHITECT

ksqdesign

NEW YORK **OKLAHOMA** **NORTH**
CAROLINA
TEXAS **COLORADO** **SOUTH**
CAROLINA

KSQ Design
215 W 40th Street
New York, NY 10018
914.682.3700 office
917.591.7013 fax
www.ksq.design

Owner
Nanuet Union Free School District
Nanuet High School Global Learning Commons
103 Church St, Nanuet, NY 10954
845.627.9880 office
845.624.5338 fax
<http://www.nanuetsd.org/>

Environmental Engineer

Green Path Environmental, Inc.
79 Glover Street, Suite 1
Staten Island, NY 10308
347.276.2339 office

MEP Engineer
**DELTA Engineers, Architects, & Land
Surveyors, DPC**
220 Harborside Dr, Suite 202
Schenectady, NY 12305
518.427.7200 office

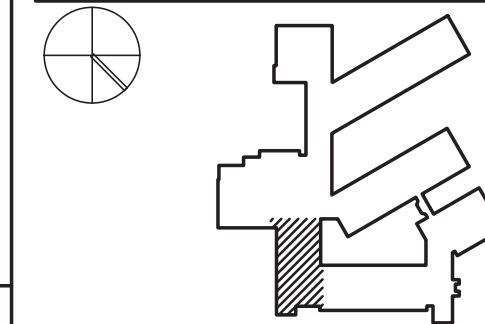
SED CONTROL NUMBERS
MILLER ES #: 50-01-08-03-0-001-022



NANUET
MILLER ES
HYDRONIC
CONVERSION
2020

103 Church St, Nanuet,
NY 10954

KEY PLAN



REVISIONS

[illegible]

ISSUED: ISSUE FOR BID

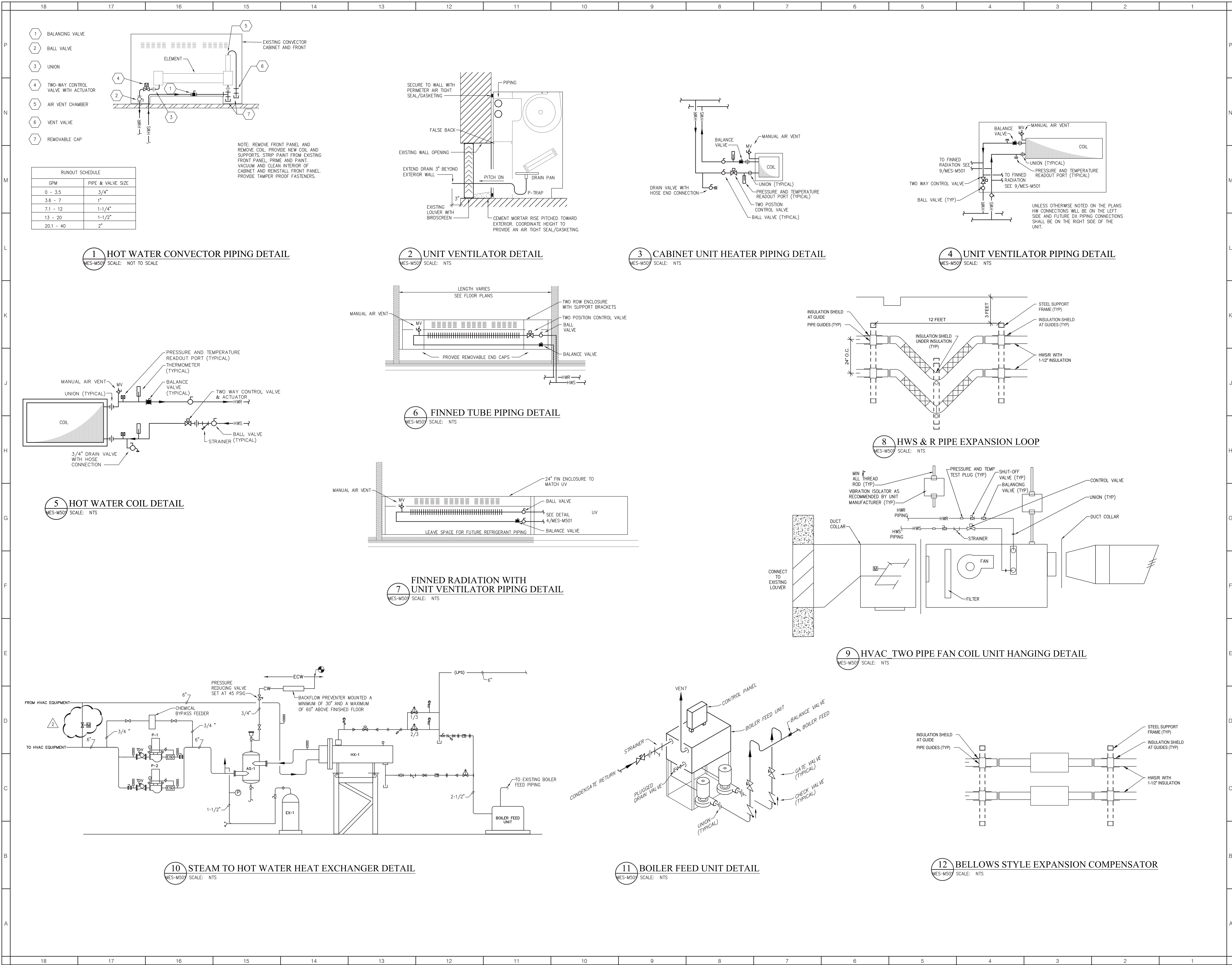
DATE: MARCH 15, 2021

SCALE: As indicated

SHEET NAME:
HVAC PLAN

SHEET NUMBER:

MES-M124



ARCHITECT

ksqdesign

NEW YORK OKLAHOMA NORTH
CAROLINA COLORADO SOUTH
TEXAS CAROLINA

KSQ Design
215 W 40th Street
New York, NY 10018
914 682 3700 office
917 691 7013 fax
www.ksqdesign.com

Owner
Nanuet Union Free School District
Nanuet High School Global Learning Commons
103 Church St. Nanuet, NY 10954
945 627 9880 office
945 624 5338 fax
http://www.nanuetd.org/

Environmental Engineer
Green Path Environmental, Inc.
79 Glover Street, Suite 1
Staten Island, NY 10308
347 276 2339 office

MEP Engineer
DELTA Engineers, Architects, & Land
Surveyors, DPC
220 Harborside Dr. Suite 202
Schenectady, NY 12305
518 427 7200 office

SED CONTROL NUMBERS
MILLER ES # 50-01-08-03-0-001-022

**NANUET
MILLER ES
HYDRONIC
CONVERSION
2020**

103 Church St, Nanuet,
NY 10954

REVISIONS

No.	Description	Date
2	ADDENDUM 2	04/06/2021

ISSUED: ISSUE FOR BID
DATE: MARCH 15, 2021
SCALE: As indicated
SHEET NAME: HVAC DETAILS
SHEET NUMBER:

MES-M501

ISSUE FOR BID SET

