

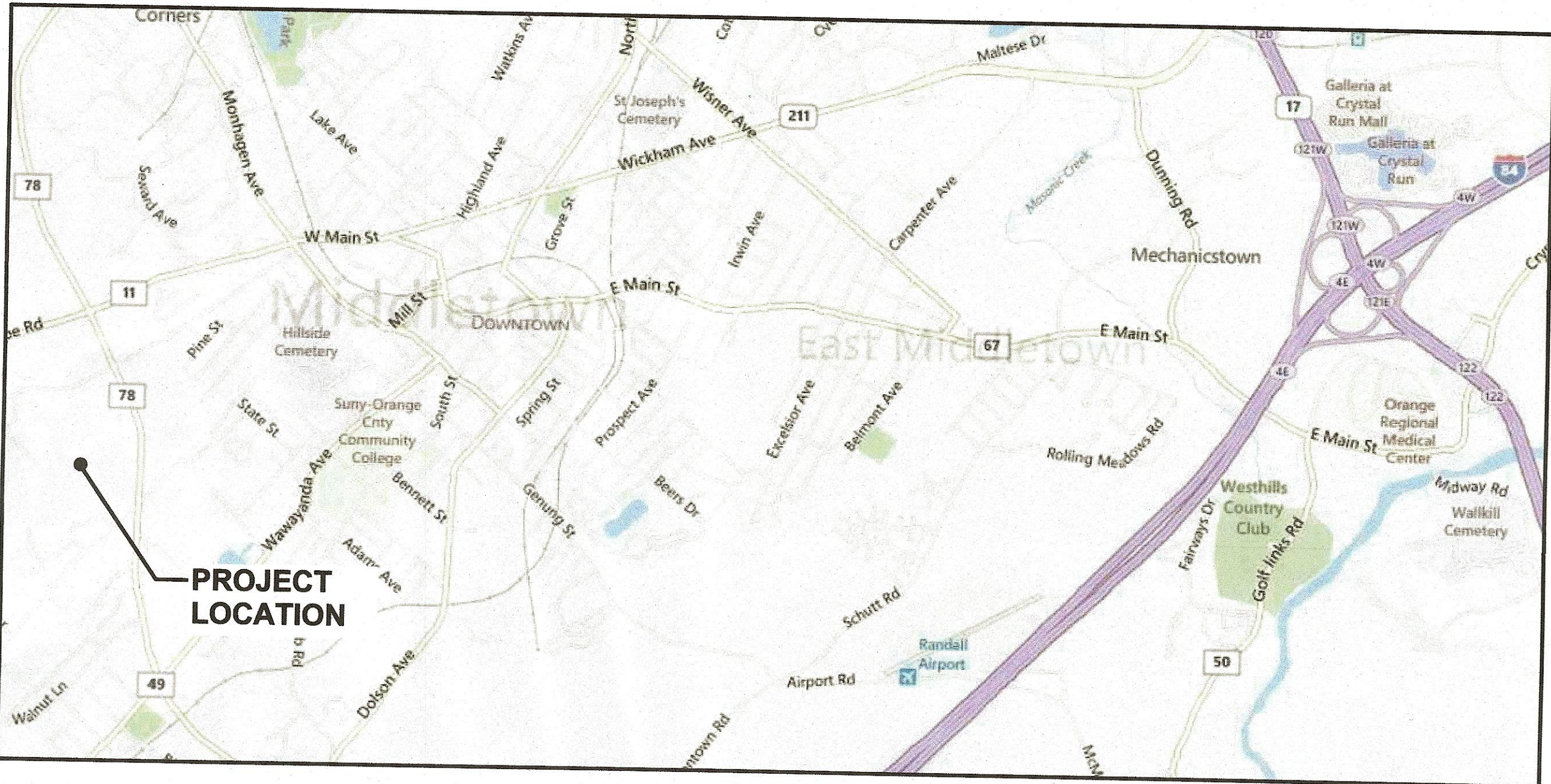
# ORANGE COUNTY COMMUNITY COLLEGE MIDDLETOWN CAMPUS

115 SOUTH STREET, MIDDLETOWN NY

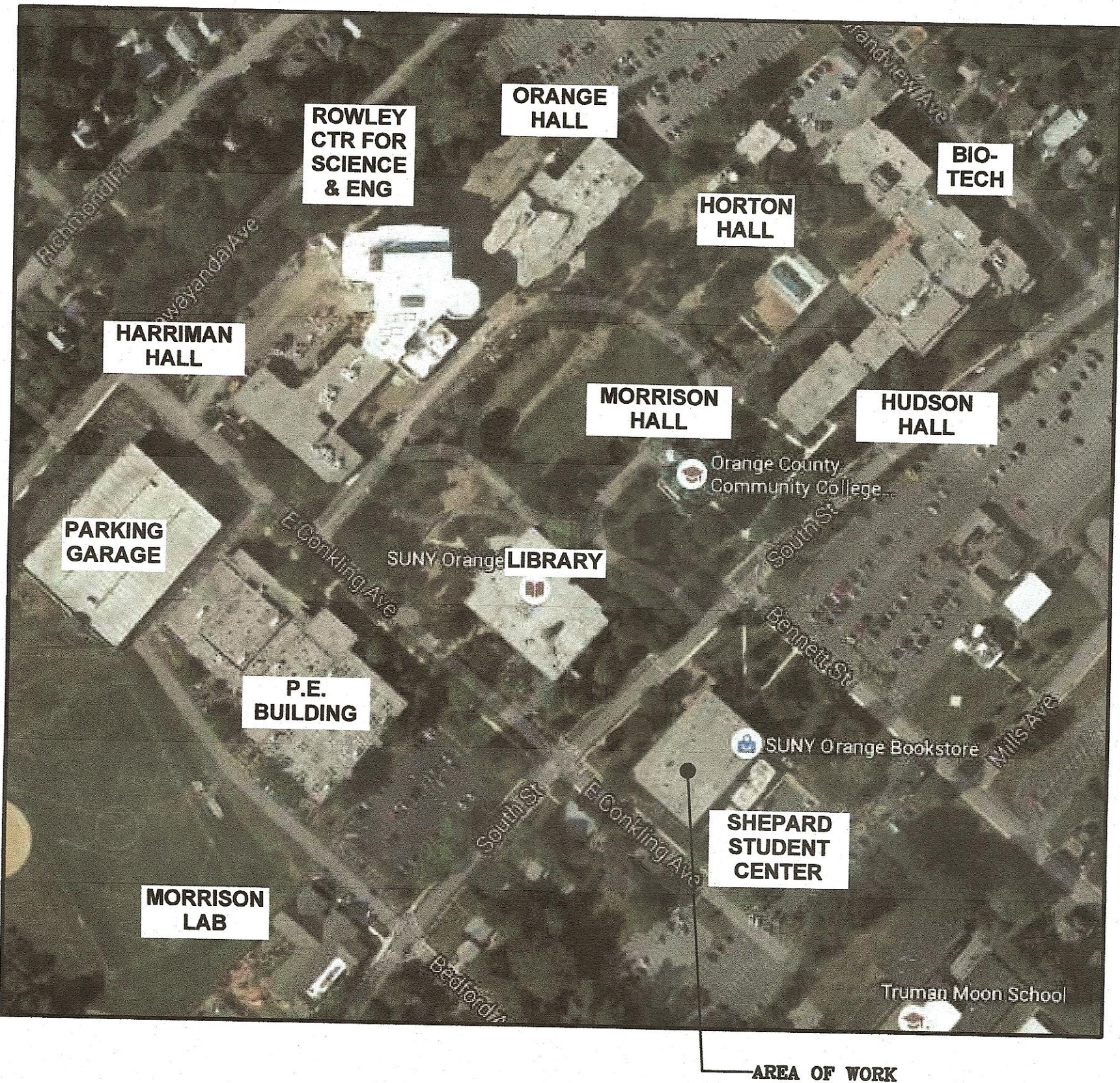
## SHEPARD STUDENT CENTER CHILLER REPLACEMENT

COUNTY JOB NUMBER: OCCC-2021-25

LOCATION MAP



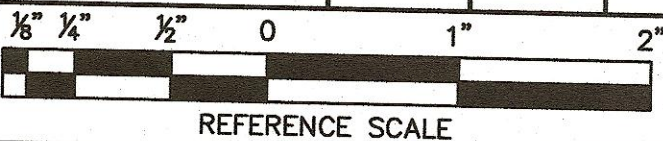
CAMPUS MAP



DRAWING LIST

PAGE	DWG. #	DRAWING TITLE
1	TS	TITLE SHEET
2	MEP-001	SYMBOLS, NOTES & ABBREVIATIONS
3	MEPD-101	MEP BASEMENT DEMOLITION PLAN
4	MEP-101	MEP BASEMENT CONSTRUCTION PLAN
5	MEP-102	PARTIAL BASEMENT ELECTRICAL DISTRIBUTION PLAN
6	MEP-801	FLOW DIAGRAMS
7	MEP-701	DETAILS, SCHEDULES & CONTROLS
8	MEP-702	DETAILS

REV #	DATE	REMARKS:	ISSUE #	DATE	ISSUED FOR:
			1	9/2/21	BID



UNAUTHORIZED ALTERATION OR ADDITION TO A PLAN BEARING A  
LICENSED PROFESSIONAL ENGINEER'S SEAL IS A VIOLATION OF  
SECTION 7209, SUB-DIVISION 2 OF THE N.Y. STATE EDUCATION LAW.

**FELLENZER III**  
ENGINEERING LLP

22 Mulberry St., Suite 2A,  
Middletown, NY 10940  
t 845-343-1481 fx 845-343-4986

181 Church St., Suite 100,  
Poughkeepsie, NY 12601  
t 845-454-9704 fx 855-320-8735

PROJECT TITLE: <b>OCCC SHEPARD STUDENT CENTER CHILLER REPLACEMENT</b> 115 SOUTH STREET, MIDDLETOWN, NY 10940					
DRAWING TITLE: <b>TITLE SHEET</b>					
DESIGNED BY: JDD	DRAWN BY: WPB	APPROVED BY P.E.: EDF	APPROVED BY P.E.: EDF	DRAWING #:	TS
DATE: 09/02/2021	SCALE: AS SHOWN	FE PROJECT #:	20-357	PAGE 1	OF 8