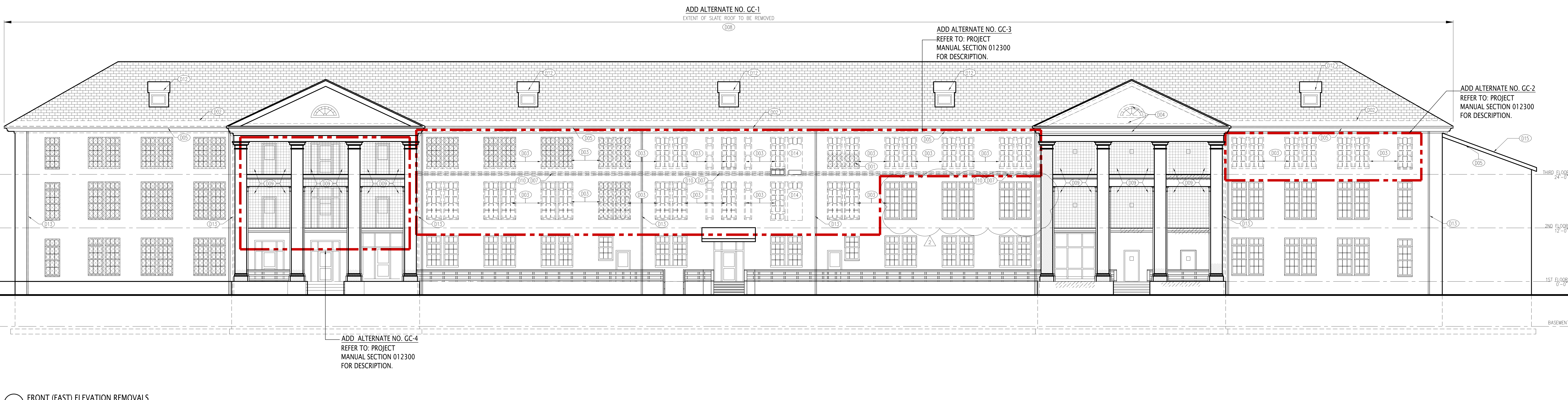


one eighth inch = one foot
 one quarter inch = one foot
 three eighths inch = one foot
 one half inch = one foot
 three quarters inch = one foot
 one inch = one foot
 one eighth inch = one foot
 one quarter inch = one foot
 three eighths inch = one foot
 one half inch = one foot
 three quarters inch = one foot
 one inch = one foot
 one eighth inch = one foot
 one quarter inch = one foot
 three eighths inch = one foot
 one half inch = one foot
 three quarters inch = one foot
 one inch = one foot



1 FRONT (EAST) ELEVATION REMOVALS
 SCALE: 1/8" = 1'-0"

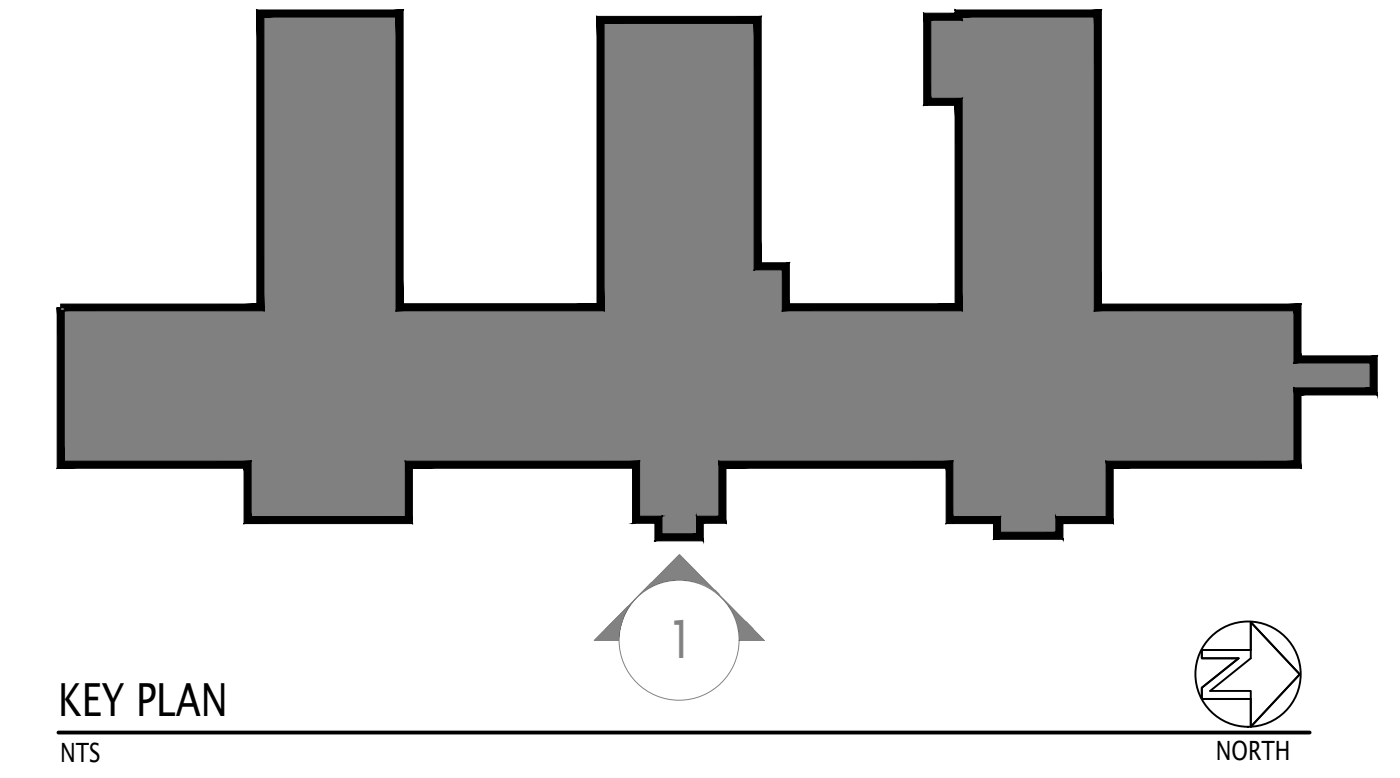
SYMBOLS LEGEND

	EXISTING WINDOW GRILLES
	EXISTING METAL SCREEN TO BE REMOVED
	EXISTING SLATE ROOF TO BE REMOVED
	EXISTING SPALLED/DAMAGED CONCRETE
	EXISTING DAMAGED STUCCO ON BRICK
	REMOVE EXISTING WOOD FRIEZE
	REMOVE BRICK MORTAR JOINTS
	EXISTING TO BE REMOVED

REMOVAL KEY NOTES REFER TO PROJECT MANUAL SECTION 012300 FOR DESCRIPTION OF ALTERNATES

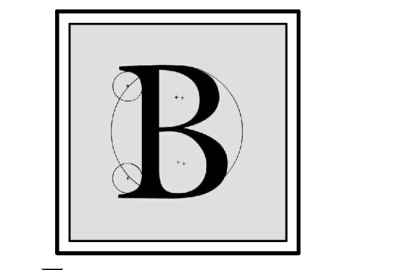
D01- REMOVE WINDOW SECURITY SCREEN/WIRE MESH ALTERNATE NO. GC-2 WINDOWS-NORTH WING- THIRD FLOOR ALTERNATE NO. GC-3 WINDOWS-EAST ELEVATION AND WEST WING
D02- REMOVE EXISTING BUILT-IN GUTTER AND ASSOCIATED FRAMING INCLUDING FASCIA BOARD, TRIM AND SOFFIT ADD ALTERNATE NO. GC-2 WINDOWS-NORTH WING- THIRD FLOOR ADD ALTERNATE NO. GC-3 WINDOWS-EAST ELEVATION AND WEST WING
D03- REMOVE EXISTING WINDOW, WOOD TRIM AND FRAME IN ITS ENTIRETY ADD ALTERNATE NO. GC-2 WINDOWS-NORTH WING- THIRD FLOOR ADD ALTERNATE NO. GC-3 WINDOWS-EAST ELEVATION AND WEST WING
D04- REMOVE PEELING PAINT, REMOVE DAMAGED MATERIAL WHERE ENCOUNTERED.
D05- REMOVE EXISTING WOOD SOFFIT, TRIM AND FASCIA ADD ALTERNATE NO. GC-1 ROOF
D06- REMOVE DETERIORATED TRIM AT FRIEZE ADD ALTERNATE NO. GC-1 ROOF
D07- REMOVE PROTRUDING METAL FLASHING INCLUDING BRICK COURSES ABOVE FLASHING REMOVE MORTAR JOINT 1 COURSE BELOW EXISTING FLASHING

D08- REMOVE EXISTING SLATE ROOFING, BATTENS, FASTENERS, FLASHING AND UNDERLAYMENT DOWN TO EXISTING ROOF SHEATHING ADD ALTERNATE NO. GC-1 ROOF
D09- REMOVE EXISTING METAL SCREEN, RAILING SYSTEM AND ASSOCIATED MOUNTING HARDWARE
D10- CLEAN AND REPOINT EXISTING BRICK VENEER.
D11- NOT USED
D12- REMOVE EXISTING DORMER ROOFING, UNDERLAYMENT AND FLASHING DOWN TO EXISTING SHEATHING.
D13- REMOVE EXISTING RAIN WATER LEADERS AND STRAPS. ADD ALTERNATE NO. GC-1 ROOF
D14- REMOVE EXISTING WOOD INFILL PANEL AT WINDOWS ADD ALTERNATE NO. GC-2 WINDOWS-NORTH WING- THIRD FLOOR ADD ALTERNATE NO. GC-3 WINDOWS-EAST ELEVATION AND WEST WING
D15- REMOVE EXISTING ROOF SHINGLES - DEDUCT ALTERNATE NO. GC-1 ROOF
D16- REMOVE EXISTING WOOD PANEL ENCLOSURE



Lothrop
 Lothrop Associates LLP Architects
 333 Westchester Avenue
 White Plains, New York 10604
 914-741-1115

White Plains Rochester Red Bank Hartford



BLAKE ENGINEERING PLLC
 1898 COUNTY ROUTE 1, WESTTOWN, NY 10998
 TEL: 845-467-9207 FAX: 845-767-5050
 MBLAKE@BLAKEENGINEERINGPLLC.COM
 MATTHEW G. BLAKE, P.E., LEED AP
 NY - 89039 NJ - GE050037 PA - PE079303
 MA - 53197 CT - 32283 FL - 85928



ISSUE NO.	ISSUE DATE	DESCRIPTION
1	03-19-2021	ISSUED FOR BID
	07-16-2021	ADDENDUM #4

ALTERATIONS TO BUILDING # 51, EMERGENCY HOUSING GROUP
 38 SEWARD AVENUE
 MIDDLETOWN, NY 10940

EXTERIOR ELEVATIONS REMOVALS-I

PROJECT NO.: 1802-01

DRAWING NO.:

ED-200