

N:\10 PROJECTS\Government\1802-01 - Orange County - Housing Suite\1802-01 Drawings\1802-01_18_1105_18-01 - Asbestos Remedial.dwg
one eighth inch = one foot
one quarter inch = one foot
three eighths inch = one foot
one half inch = one foot
three quarters inch = one foot
one inch = one foot

one inch = one foot

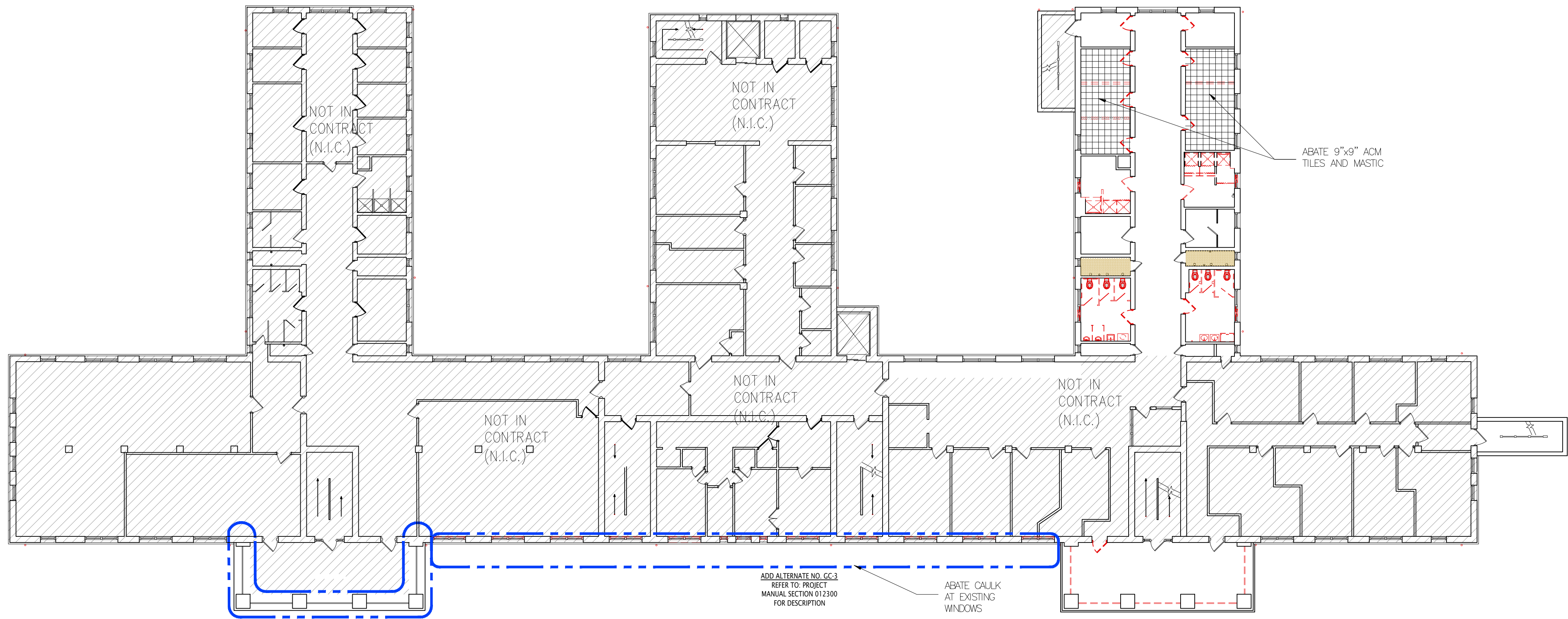
three quarters inch = one foot

one half inch = one foot

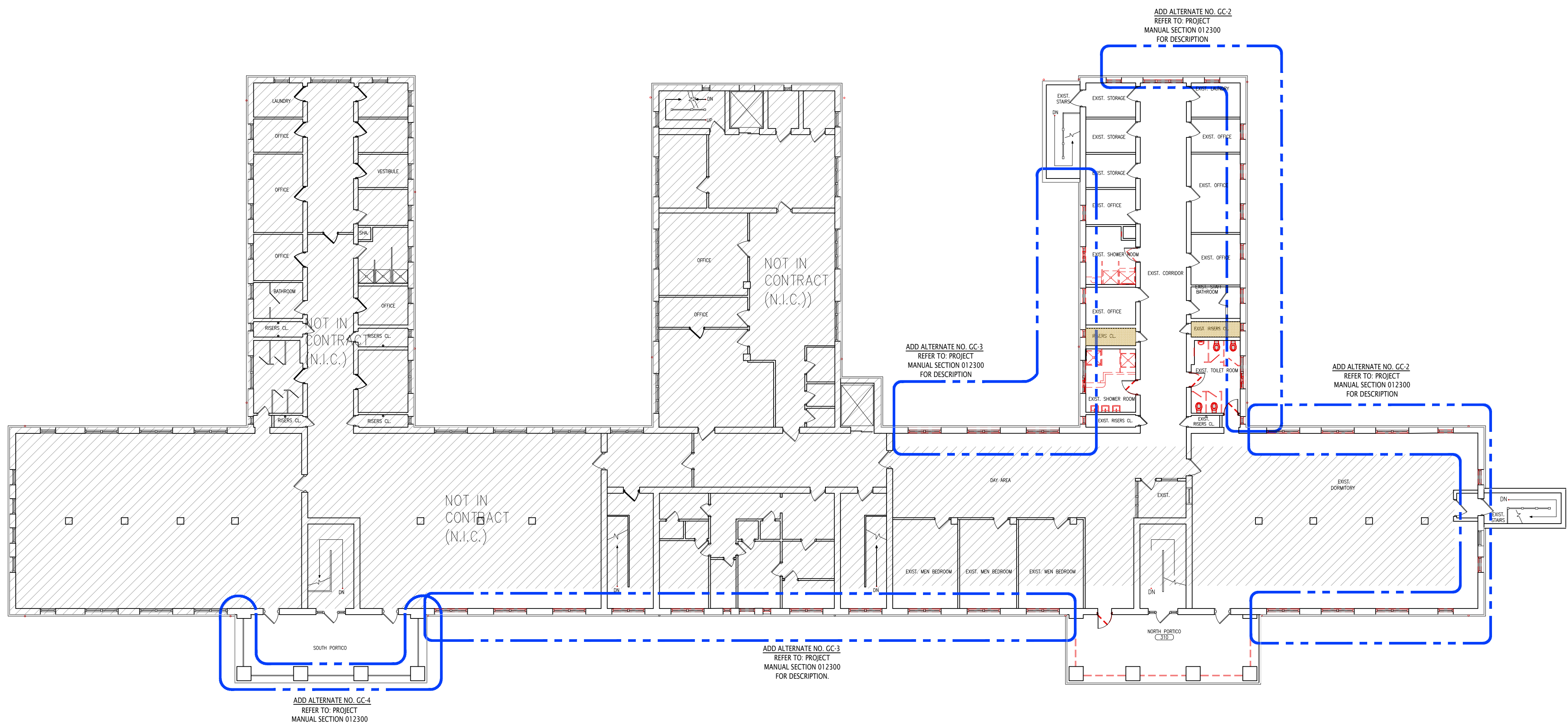
three eighths inch = one foot

one quarter inch = one foot

one eighth inch = one foot



2 SECOND FLOOR PLAN
SCALE: N.T.S.



3 THIRD FLOOR PLAN
SCALE: N.T.S.

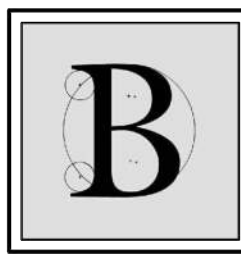
NOTES

- WINDOW CAULK**
ABATEMENT CONTRACTOR IS RESPONSIBLE FOR COMPLETE REMOVAL AND DISPOSAL OF ASBESTOS CONTAINING CAULK AT EXISTING WINDOWS. SEE ALSO ADD ALTERNATE #3 AND #4
- PIPE INSULATION**
ABATEMENT CONTRACTOR IS RESPONSIBLE FOR COMPLETE REMOVAL AND DISPOSAL OF ASBESTOS CONTAINING INSULATION AT PIPES IN PLUMBING CHASE WALLS
- NOT IN SCOPE**
ATTIC SPACE
NOT IN SCOPE
- TO BE REMOVED**
ABATEMENT CONTRACTOR IS RESPONSIBLE FOR COMPLETE REMOVAL AND DISPOSAL OF ASBESTOS CONTAINING 9"x9" ACM TILES AND MASTIC

Lothrop

Lothrop Associates LLP Architects
333 Westchester Avenue
White Plains, New York 10604
914-741-1115

White Plains Rochester Red Bank Hartford

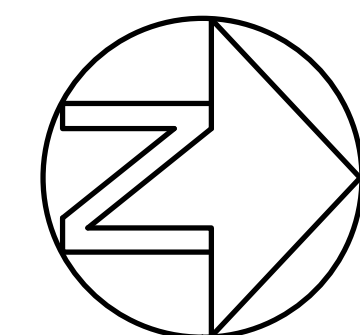


BLAKE ENGINEERING PLLC
1898 COUNTY ROUTE 1, WESTTOWN, NY 10998
TEL: 845-467-9207 FAX: 845-707-5050
M.BLAKE@BLAKEENGINEERINGPLLC.COM

MATTHEW G. BLAKE, P.E., LEED AP
NY - 89039 NJ - GE050037 PA - PE079303
MA - 53197 CT - 32283 FL - 85928



ENVIRONMENTAL MANAGEMENT SOLUTIONS
420 COLUMBUS AVENUE,
VALHALLA, NY 10995



NORTH



**ALTERATIONS TO
BUILDING # 51,
EMERGENCY HOUSING
GROUP
38 SEWARD AVENUE
MIDDLETOWN, NY 10940**

**ASBESTOS
ABATEMENT
PLANS**

PROJECT NO.: 1802-01

DRAWING NO.:

H-001