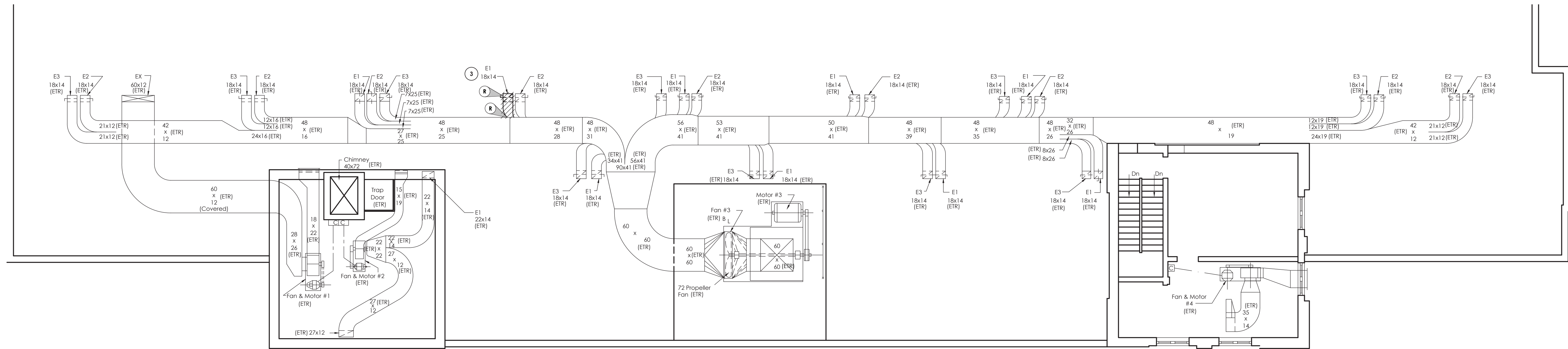
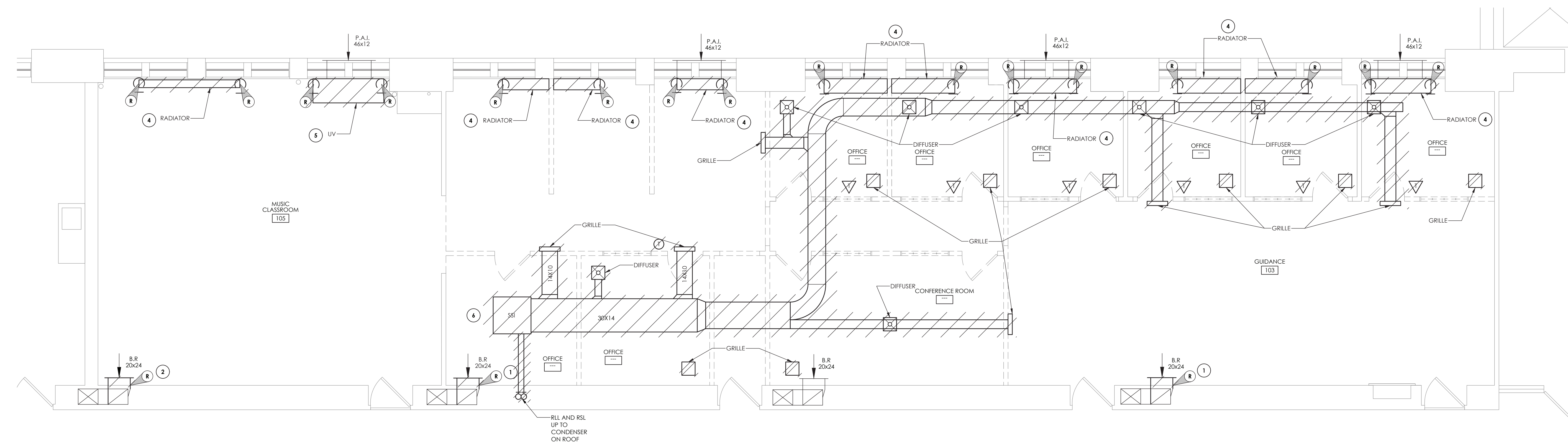


1
H101
ROOF DEMOLITION PLAN
SCALE: 1/8" = 1'-0"



2
H101
ATTIC DEMOLITION PLAN
SCALE: 1/8" = 1'-0"



3
H101
FIRST FLOOR DEMOLITION PLAN
SCALE: 1/4" = 1'-0"

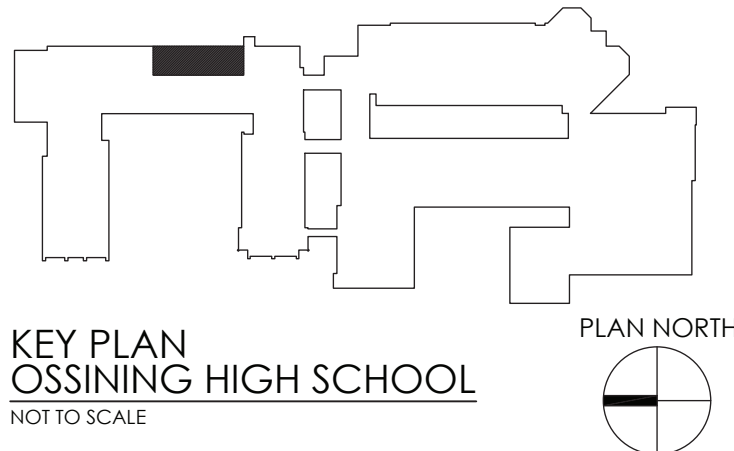
KEY NOTES:

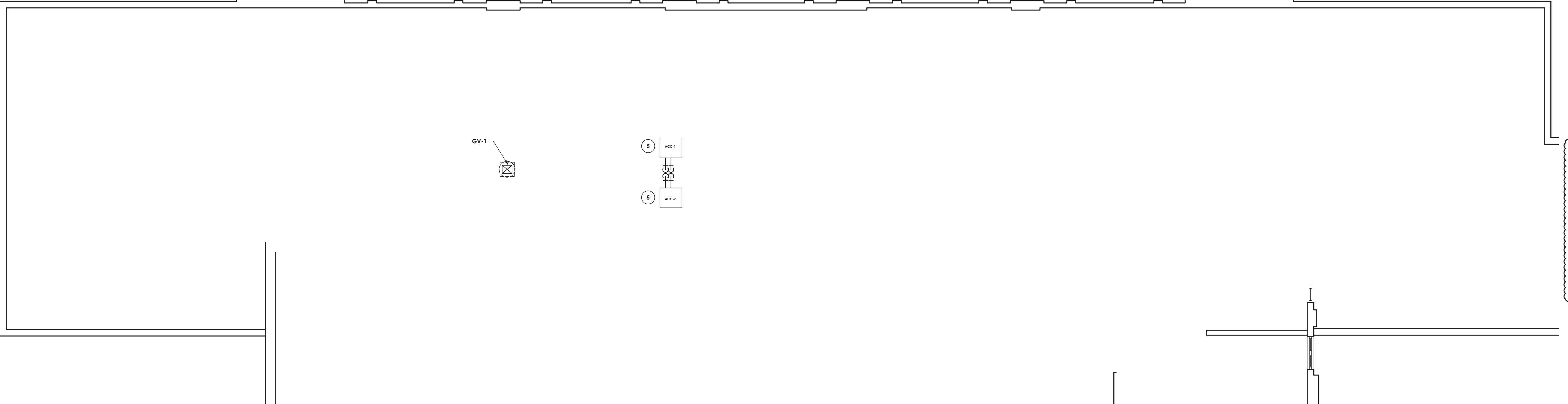
1. REMOVE EXISTING GRILLE. ABANDON DUCTWORK. COORDINATE WALL PATCHING WITH G.C.
2. REMOVE EXISTING GRILLE. PREPARE FOR NEW WORK.
3. REMOVE EXISTING DUCTWORK FROM ROOF PENETRATION BACK TO MAIN. PREPARE FOR NEW WORK.
4. REMOVE EXISTING STEAM RADIATOR AND PIPING BACK TO FLOOR. PREPARE FOR NEW WORK.
5. REMOVE EXISTING UNIT VENTILATOR AND PIPING BACK TO FLOOR. COORDINATE SEALING AND INSULATING PENETRATION AT INTERIOR OF BUILDING WITH G.C. PREPARE FOR NEW WORK.
6. REMOVE EXISTING FAN COIL UNIT AND ALL ASSOCIATED DUCTWORK, PIPING AND CONTROLS. REMOVE PIPING UP TO CONDENSER ON ROOF. PREPARE FOR NEW WORK.
7. REMOVE EXISTING CONDENSING UNIT AND ALL ASSOCIATED PIPING, WIRING AND SUPPORTS. PREPARE FOR NEW WORK.

GENERAL NOTES:

1. ALL CONTROLS WORK SHALL BE DONE USING THE EXISTING BUILDING MANAGEMENT SYSTEM. CONTACT AUTOMATED CONTROL LOGIC, INC. FOR ALL CONTROLS WORK.
2. MODIFY AND PATCH ROOFING AND DECK AS NECESSARY TO ACCOMMODATE MECHANICAL WORK SCOPE. COORDINATE WITH OWNER AND THE EXISTING ROOFING MANUFACTURER TO MAINTAIN THE EXISTING ROOF WARRANTY. ALL ROOFING WORK SHALL BE PER THE ROOFING MANUFACTURER'S AND NRCA REQUIREMENTS AND RECOMMENDATIONS.
3. PRIOR TO CLOSEOUT, SUBMIT ROOFING MANUFACTURER'S WRITTEN APPROVAL OF ALL ROOFING WORK.

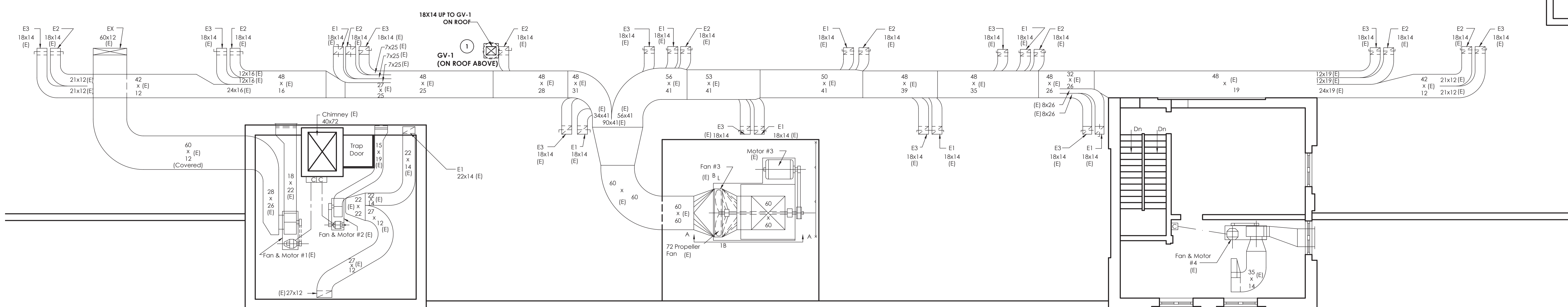
REVISIONS	NO.	DATE	DESCRIPTION
	1	12/18/2020	BID ADDENDUM 1



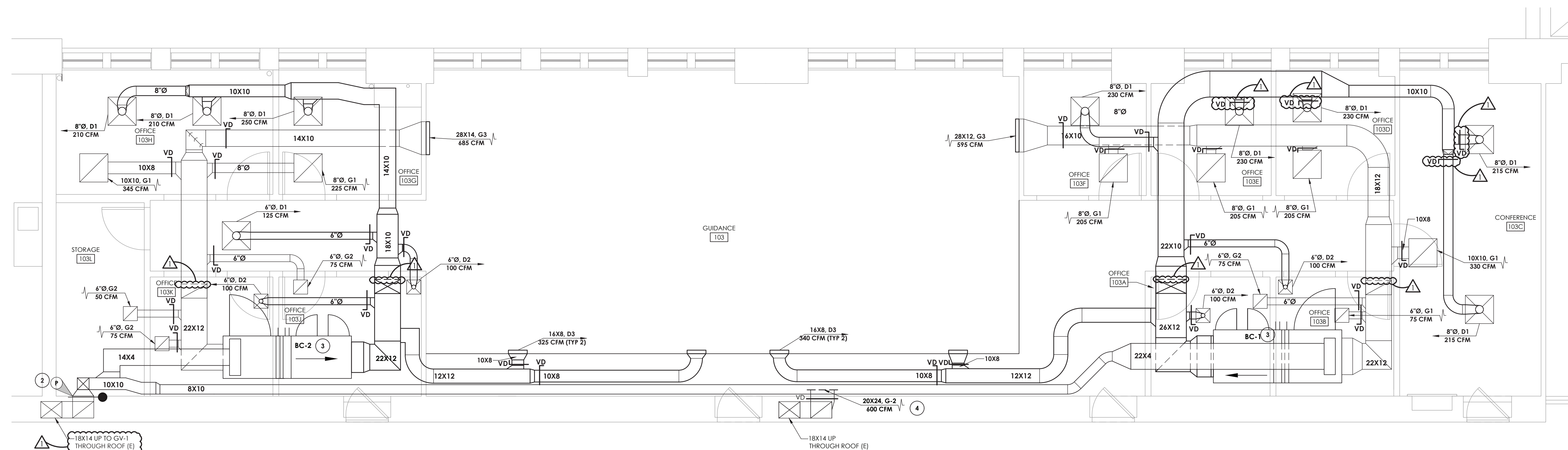


1 ROOF NEW WORK PLAN
SCALE: 1/8" = 1'-0"

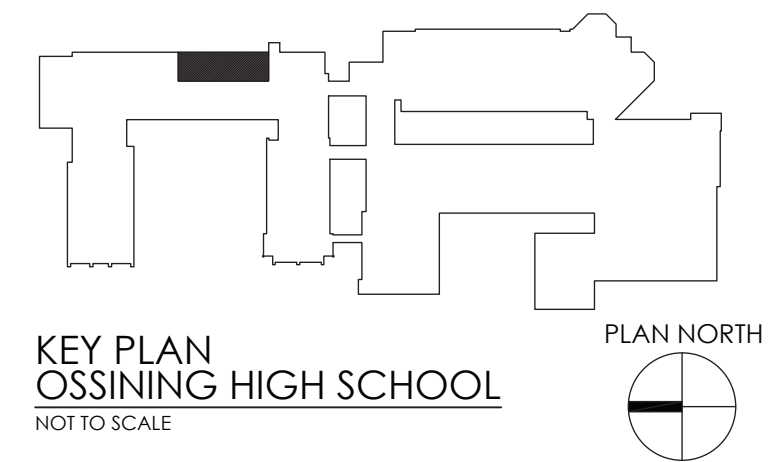
- KEY NOTES:**
1. EXTEND EXISTING 18X14 DUCT FROM ATTIC SPACE FLOOR UP TO GV-1 ON ROOF ABOVE. PROVE 2" CURB FOR GV-1.
 2. CONNECT OUTSIDE AIR DUCT INTAKE TO EXISTING WALL PENETRATION WHERE GRILLE WAS REMOVED. MODIFY OPENING AS REQUIRED TO CONNECT NEW OUTSIDE AIR DUCT. PROVIDE NEW FIRE DAMPER.
 3. INSTALL BLOWER COIL UNIT ABOVE DROP CEILING. PROVIDE SPACE FOR FILTER ACCESS. COORDINATE FINAL LOCATION WITH THE G.C.
 4. INSTALL NEW 20X24 GRILLE IN EXISTING LOCATION APPROXIMATELY 12" ABOVE FINISHED FLOOR. BALANCE TO 400 CFM.
 5. PROVIDE NEW CONDENSER ON 18-INCH HIGH EQUIPMENT RAILS. EXTEND RAILS A MINIMUM OF SIX-INCHES BEYOND EACH SIDE OF THE UNIT. SECURE CONDENSER TO RAILS WITH CADMIUM PLATED HARDWARE. PROVIDE REFRIGERANT PIPING TO THE ASSOCIATED BLOWER COIL UNIT BELOW. SIZE REFRIGERANT PIPING AND PROVIDE ACCESSORIES PER THE MANUFACTURER'S RECOMMENDATIONS. PROVIDE PORTAL. COORDINATE WITH THE OWNER AND EXISTING ROOFING MANUFACTURER TO MAINTAIN THE WARRANTY ON THE EXISTING ROOF. ALL ROOFING WORK SHALL BE PER NRCA RECOMMENDATIONS.
- GENERAL NOTES:**
1. ALL CONTROLS WORK SHALL BE DONE USING THE EXISTING BUILDING MANAGEMENT SYSTEM. CONTACT AUTOMATED CONTROL LOGIC, INC. (ACL) FOR ALL CONTROLS WORK.



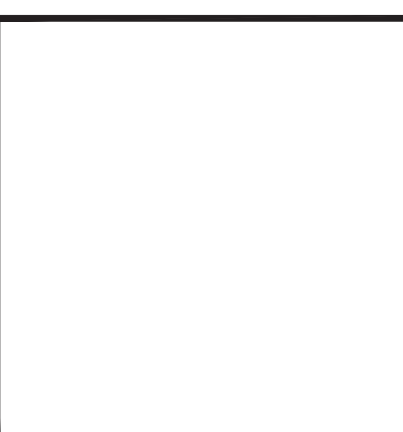
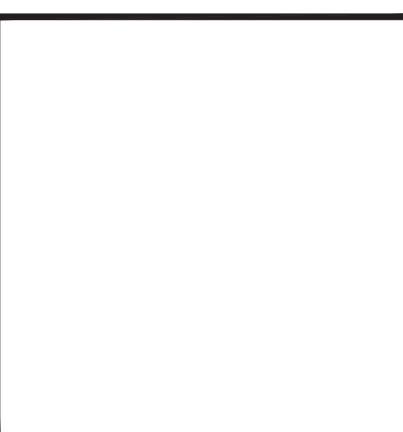
2 ATTIC NEW WORK PLAN
SCALE: 1/8" = 1'-0"



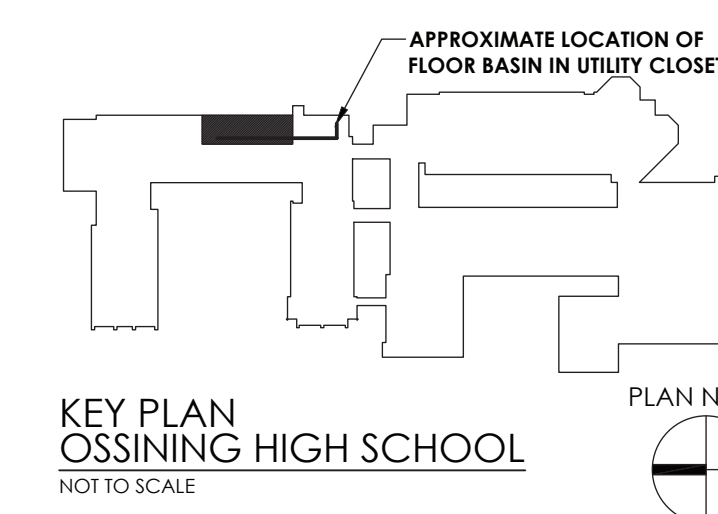
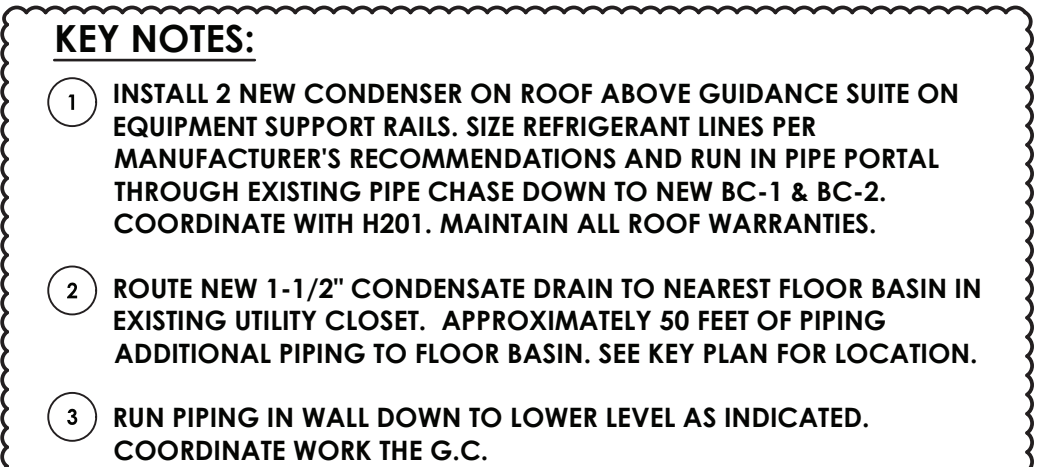
3 FIRST FLOOR NEW WORK PLAN
SCALE: 1/4" = 1'-0"



REVISIONS	NO.	DATE	DESCRIPTION
	1	12/18/2020	BID ADDENDUM 1



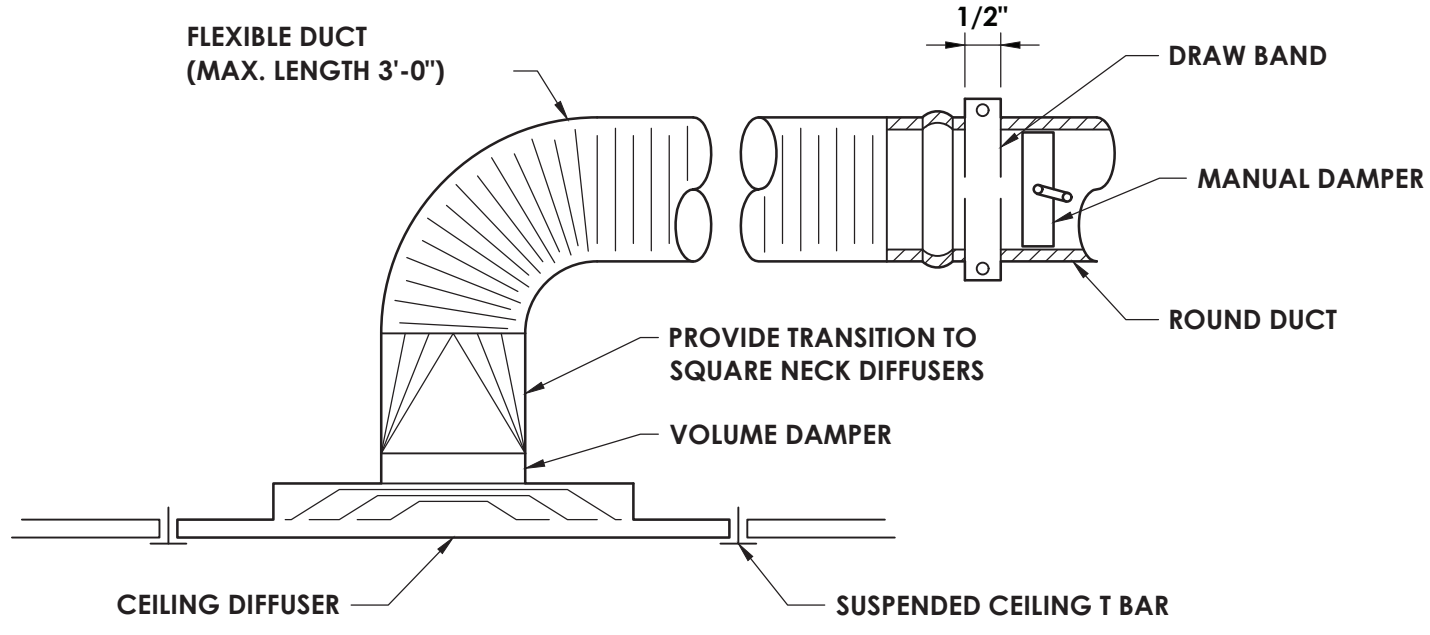
DATE	DRAWN	CHECKED
08/31/2020	AJS	AJS
SCALE	AS SHOWN	
SHEET TITLE	MECHANICAL DUCTWORK NEW WORK PLANS	



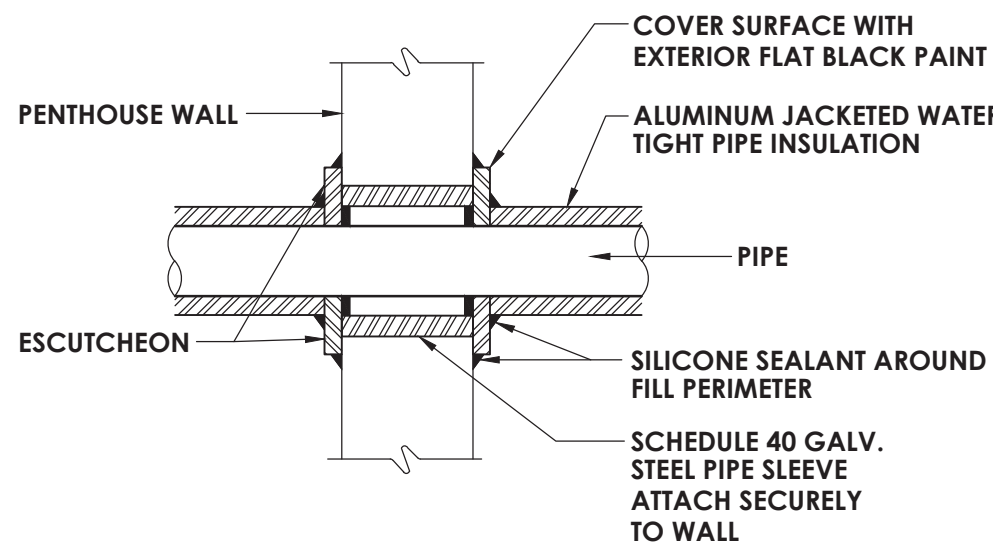
PROJECT NUMBER
14428.12

OHS
H301

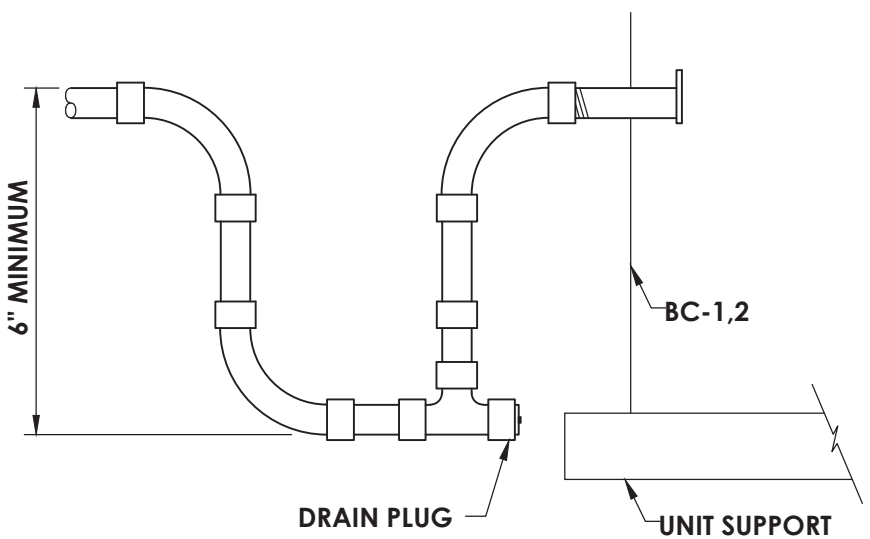
DRAWING NUMBER



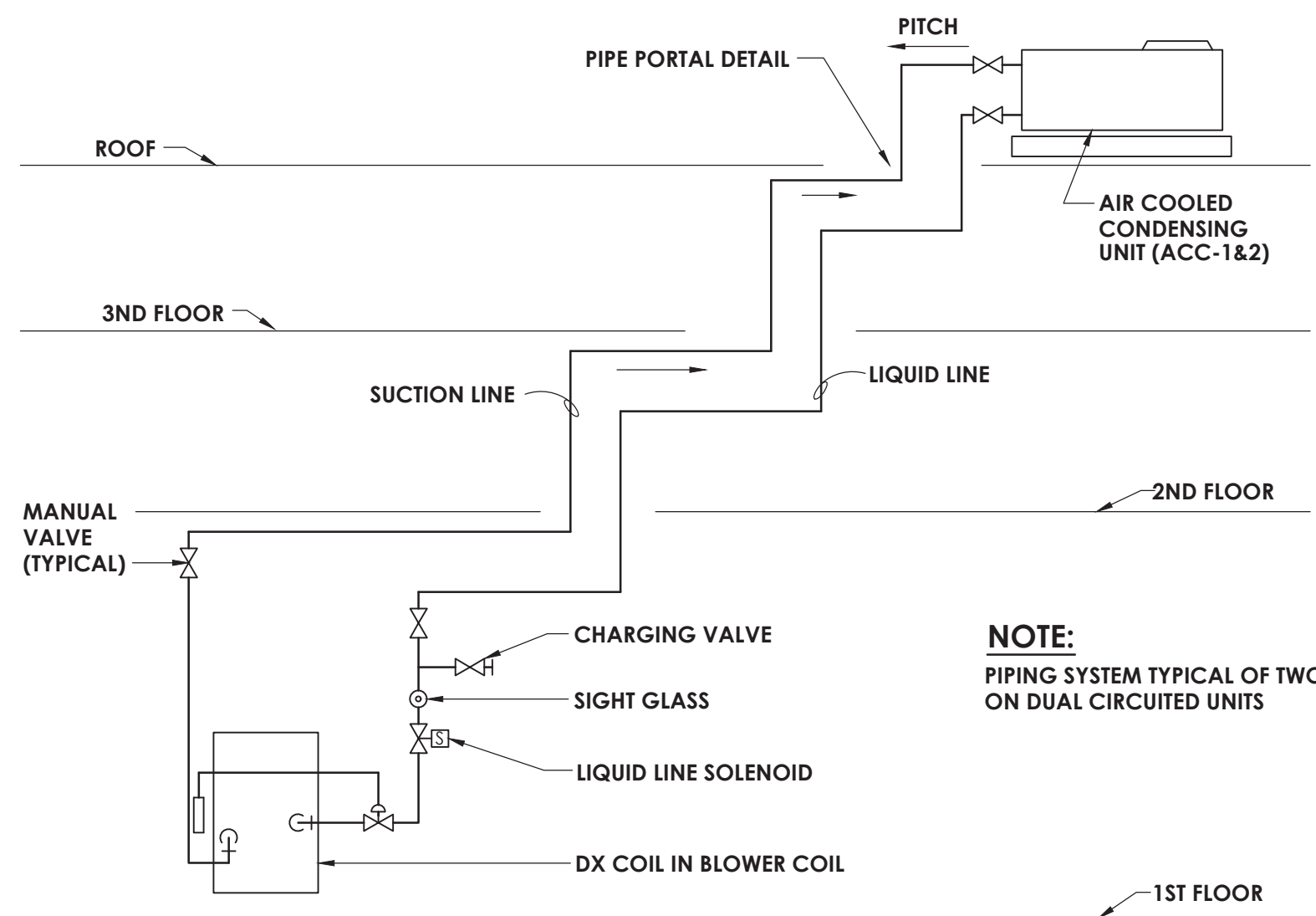
1
H800
NOT TO SCALE
DIFFUSER DETAIL



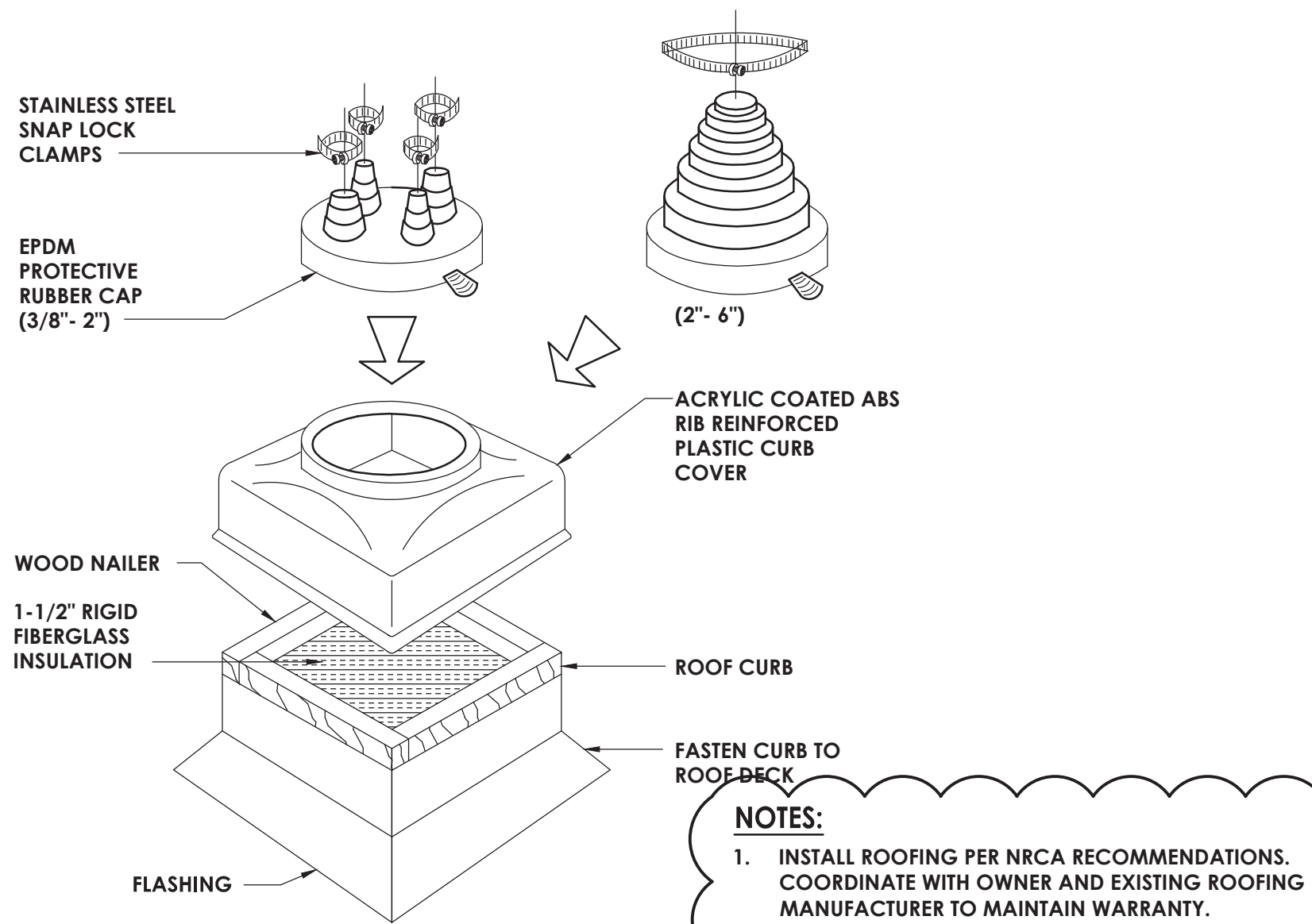
3
H800
NOT TO SCALE
PIPE THROUGH NON-RATED WALL



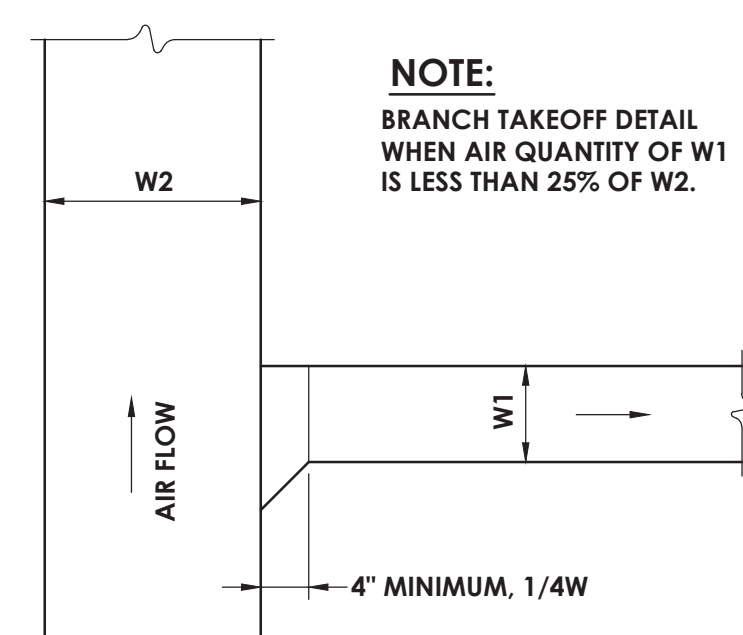
5
H800
NOT TO SCALE
CONDENSATE TRAP DETAIL



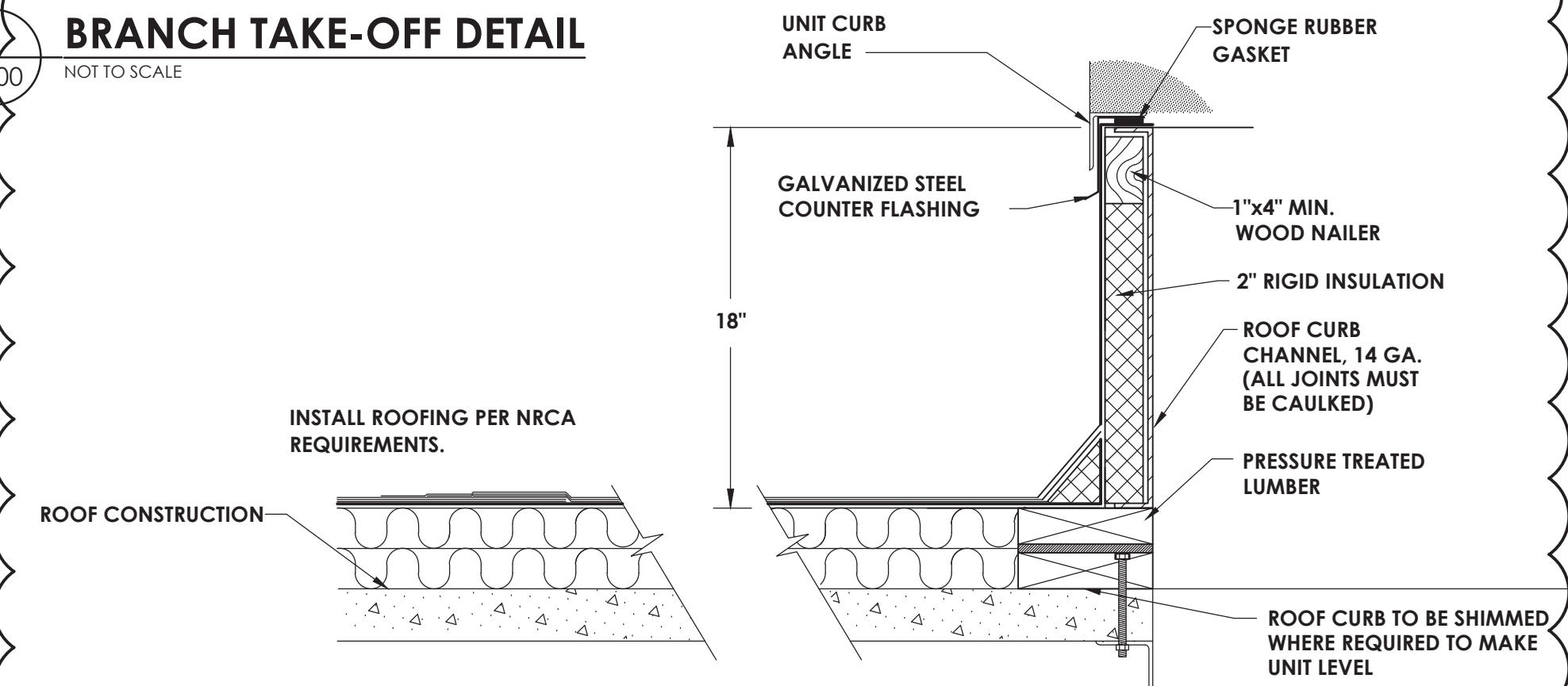
8
H800
NOT TO SCALE
REFRIGERANT PIPING SCHEMATIC



12
H800
NOT TO SCALE
PIPE PORTAL DETAIL

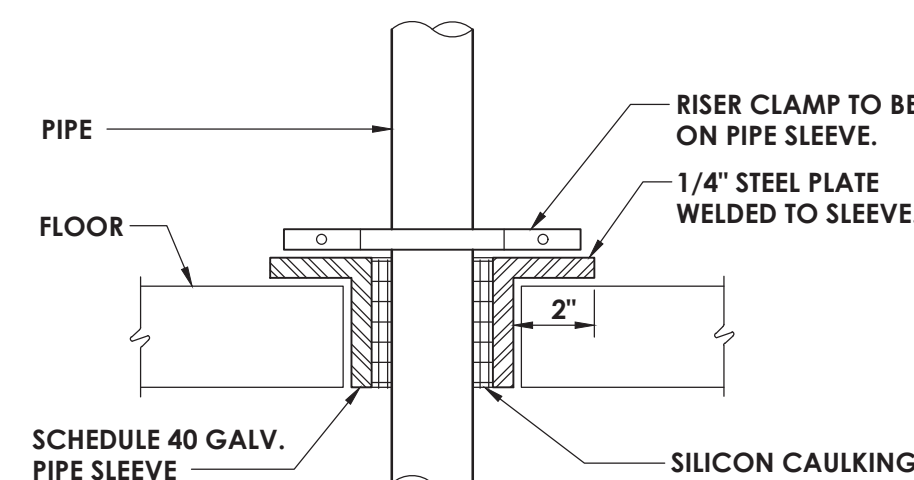


2
H800
NOT TO SCALE
BRANCH TAKE-OFF DETAIL

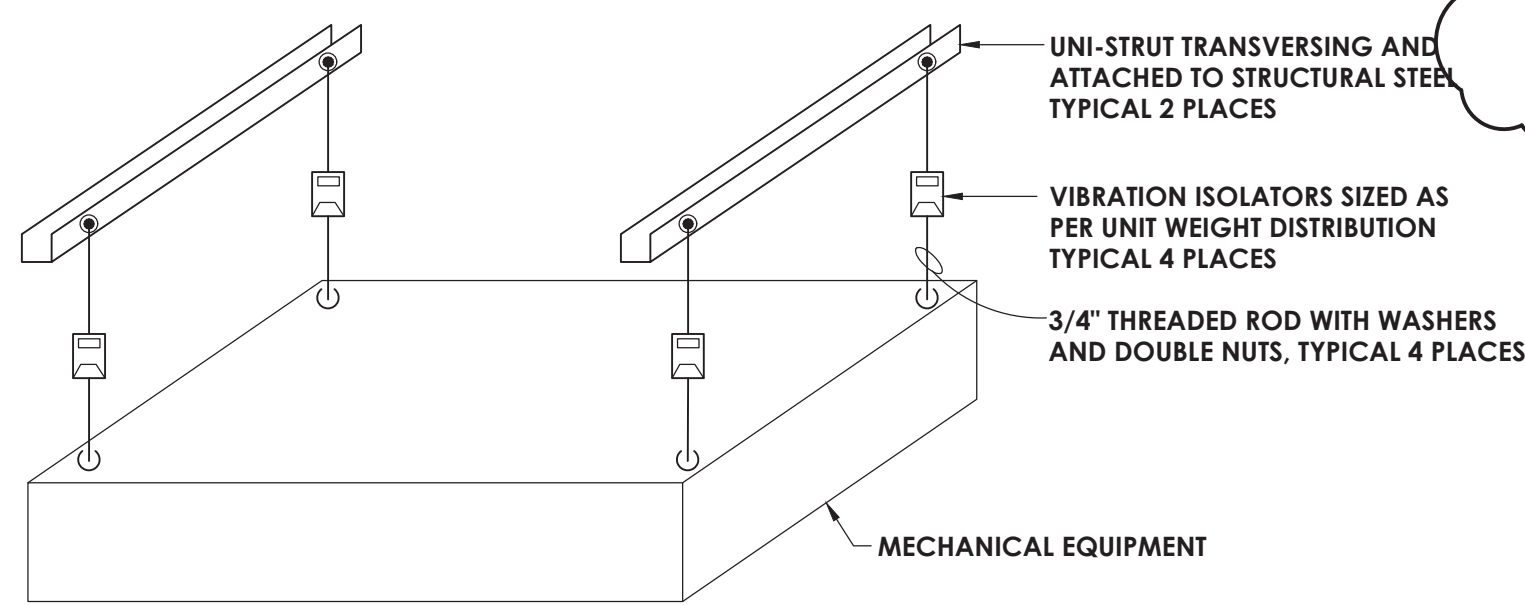


- NOTES:**
1. ALL ROOF TOP HVAC EXHAUST FANS REQUIRED TO HAVE CURB AND CURB INTERIOR AS SHOWN UNLESS OTHERWISE NOTED.
 2. INSTALL ROOFING PER NRCA RECOMMENDATIONS. COORDINATE WITH OWNER AND EXISTING ROOFING MANUFACTURER TO MAINTAIN WARRANTY.
 3. REMOVE EXISTING ROOFING AND ROOF INSULATION DOWN TO EXISTING ROOF DECK AS NECESSARY FOR INSTALLATION OF HVAC EQUIPMENT CURB. CUT OPENING IN EXISTING ROOF DECK AND PROVIDE STRUCTURAL SUPPORT FOR MECHANICAL EQUIPMENT AND OPENING EDGE.
 4. SECURE EQUIPMENT TO RAIL WITH CADMIUM PLATED HARDWARE.
 5. INSTALLATION OF ALL MECHANICAL EQUIPMENT, RAILS AND CURBS SHALL CONFORM TO NYS BUILDING CODE SECTION 1604.9 AND THE WIND RESTRAINT REQUIREMENTS OF THIS PROJECT.

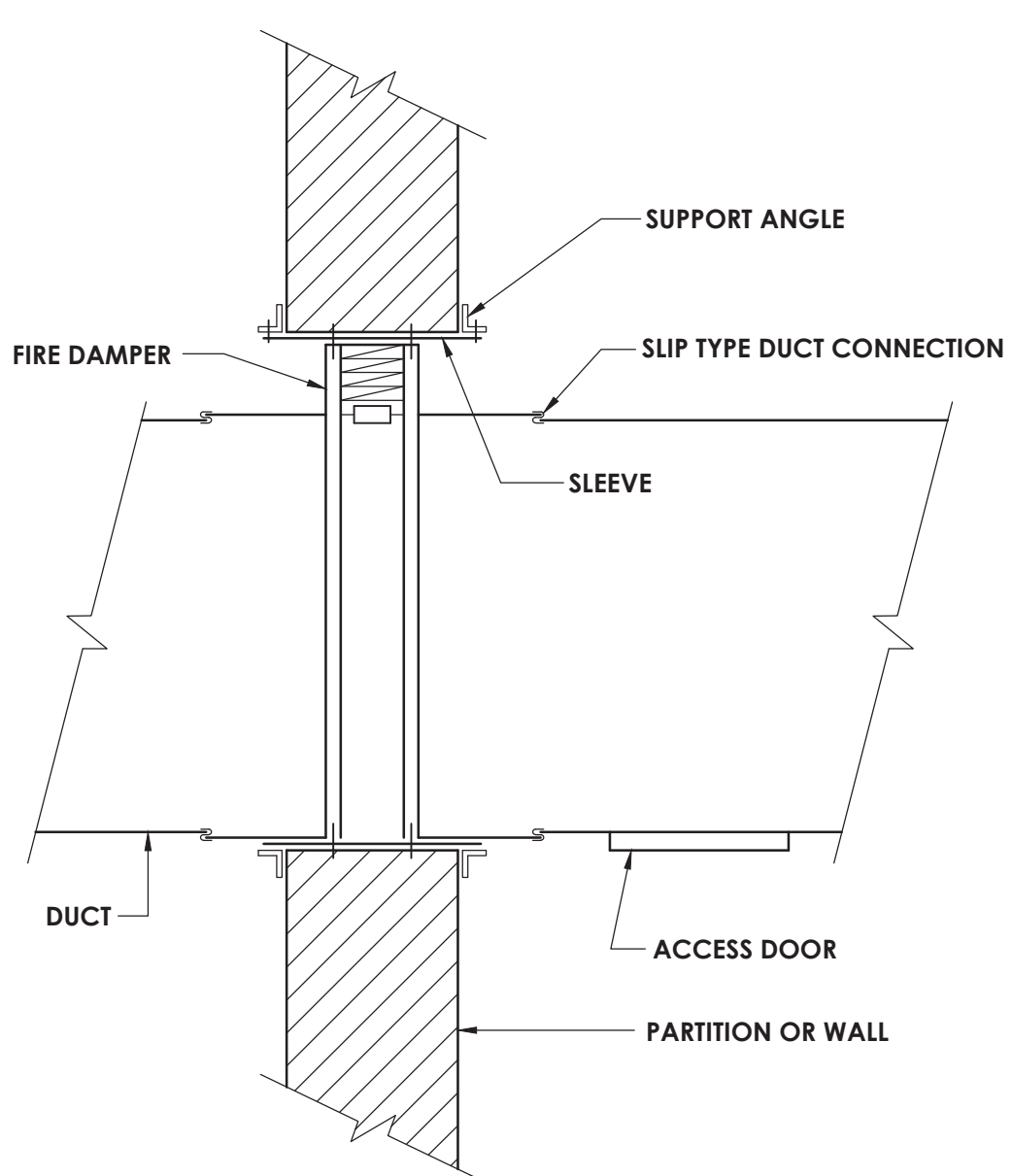
4
H800
NOT TO SCALE
ROOF VENT ROOF CURB DETAIL - EXISTING ROOF



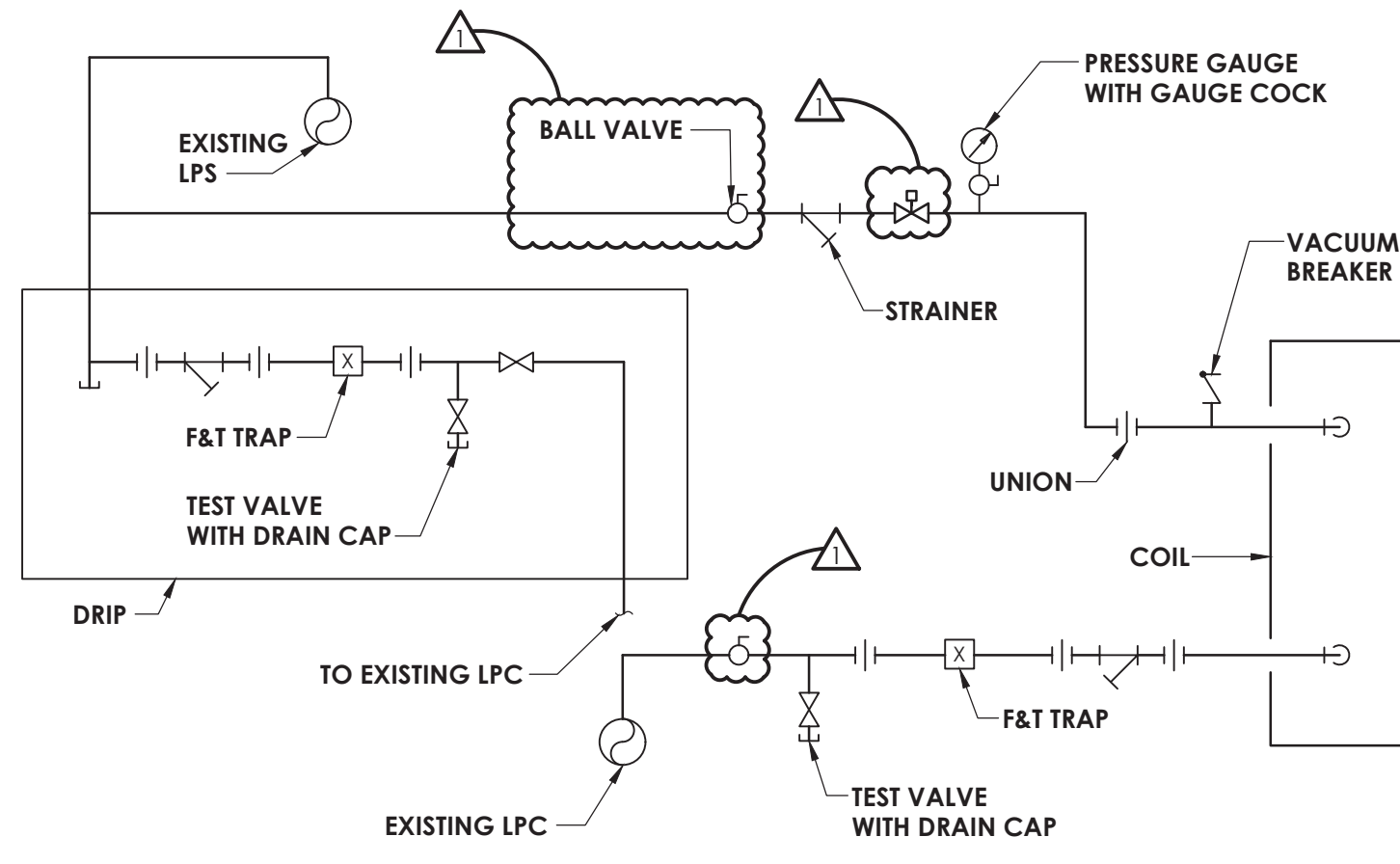
6
H800
NOT TO SCALE
PIPE THROUGH NON-RATED FLOOR



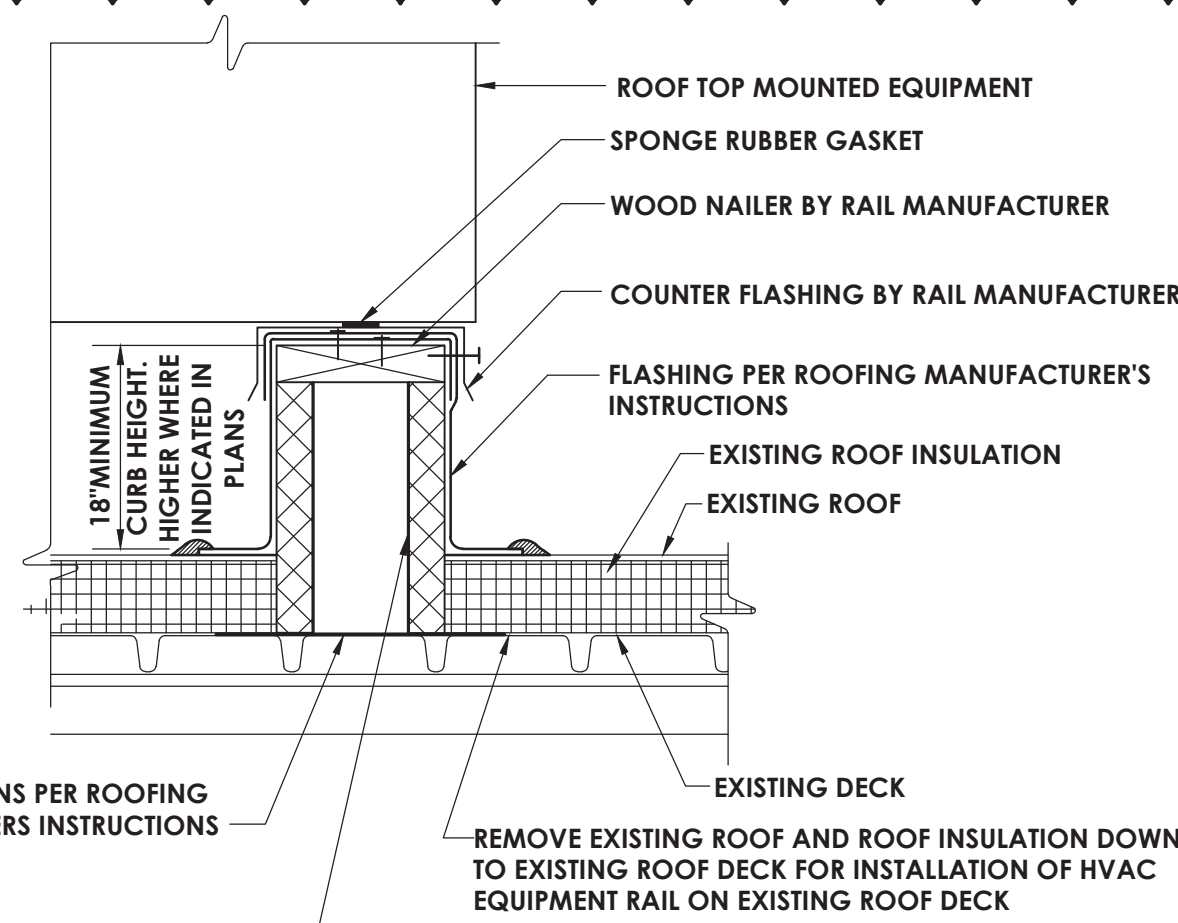
9
H800
NOT TO SCALE
INDOOR UNIT SUPPORT INSTALLATION DETAIL



13
H800
NOT TO SCALE
VERTICAL FIRE DAMPER DETAIL

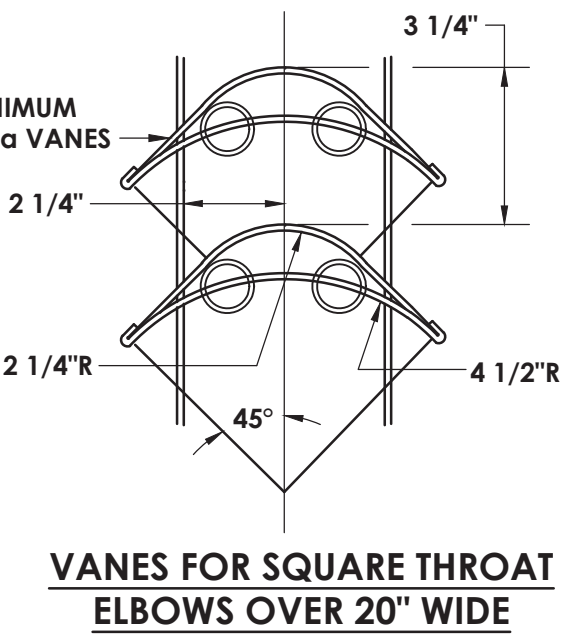


14
H800
NOT TO SCALE
STEAM COIL PIPING DETAIL

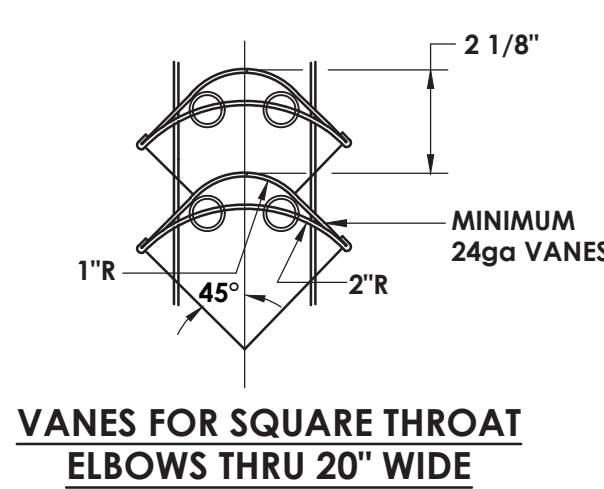


- NOTE:**
1. INSTALL ROOFING PER NRCA RECOMMENDATIONS. COORDINATE WITH OWNER AND EXISTING ROOFING MANUFACTURER TO MAINTAIN WARRANTY.
 2. REMOVE EXISTING ROOFING AND ROOF INSULATION DOWN TO EXISTING ROOF DECK AS NECESSARY FOR INSTALLATION OF HVAC EQUIPMENT CURB. CUT OPENING IN EXISTING ROOF DECK AND PROVIDE STRUCTURAL SUPPORT FOR MECHANICAL EQUIPMENT AND OPENING EDGE. CRICKET AWAY FROM RAILS FOR DRAINAGE.
 3. SECURE EQUIPMENT TO RAIL WITH CADMIUM PLATED HARDWARE.
 4. INSTALLATION OF ALL MECHANICAL EQUIPMENT, RAILS AND CURBS SHALL CONFORM TO NYS BUILDING CODE SECTION 1604.9 AND THE WIND RESTRAINT REQUIREMENTS OF THIS PROJECT.

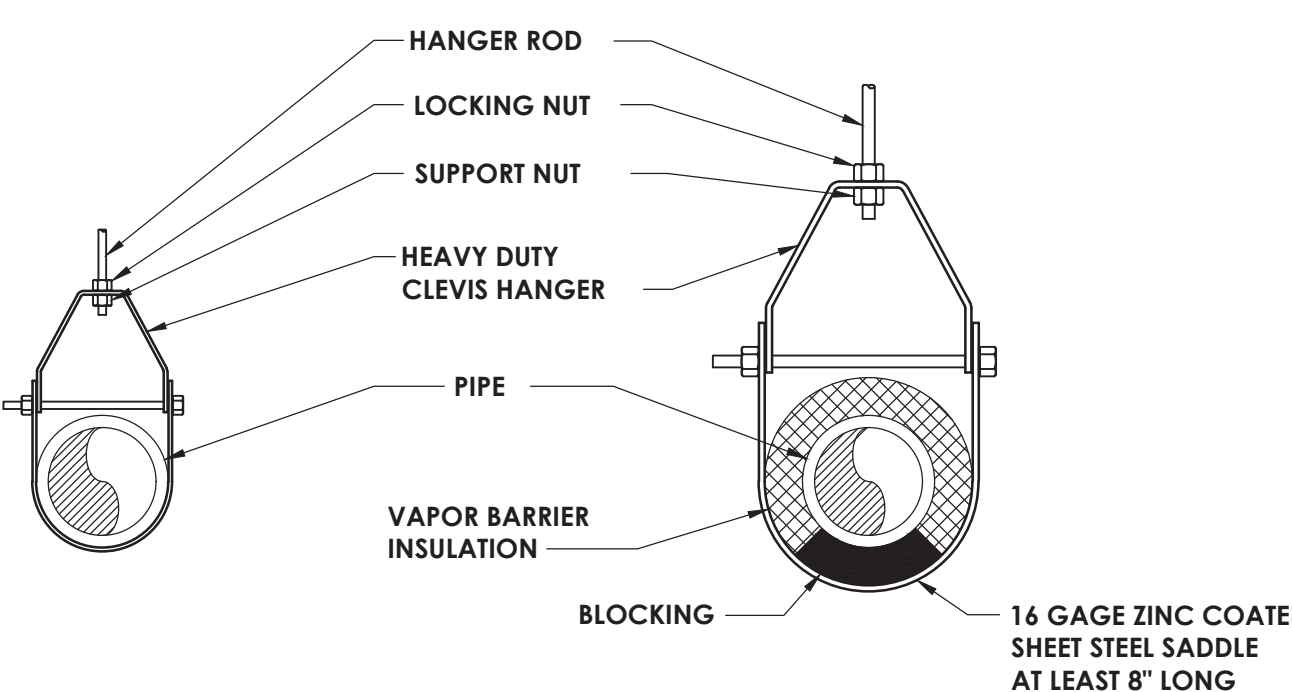
7
H800
SCALE: NOT TO SCALE
EQUIPMENT, DUCT AND PIPING ROOF RAILS



10
H800
NOT TO SCALE
TYPICAL TURNING VANE DETAIL



11
H800
NOT TO SCALE
PIPE SUPPORT DETAIL



15
H800
NOT TO SCALE
FAN COIL CONTROL SCHEMATIC - STEAM BC-1.2

BLOWER COIL SCHEDULE																												
MARK	SUPPLY CFM	MIN. OA CFM	RETURN CFM	FAN DATA				ELECTRICAL DATA				STEAM HEATING COIL DATA				DX COOLING DATA										WT (LBS)	TYPICAL UNIT MFG & MODEL NO.	REMARKS:
				EXT SP	TOTAL SP	RPM	BHP	VOLT	PH	HZ	MBH	TEMP°F		INLET (PSI)	FACE AREA (FT²)	COND. LB/HR	DX FACE AREA (FT²)	ROWS	FPI	EAT °F /WB	DB /WB	LAT °F DB/WB	COOLING MBH					
												ENT	LVG										TOTAL	SENS				
BC-1	1977	310	1667	1.5	2.45	2678	1.34	208	3	60	85.8	59.1	99.2	2	6.3	87.8	6.4	3	12	78.5 / 66.1	56.4 / 54.8	67.7	46.9	1406	KRIEGER KAH-30M46	1.3,4,5		
BC-2	1646	190	1456	1.5	2.98	2640	1.32	208	3	60	57.1	61.8	93.9	2	3.8	58.5	3.8	5	10	77.2 / 65.7	54.5 / 53.7	58.6	40.3	1225	KRIEGER KAH-30K36	1.2,4,5		
REMARKS:				1. PROVIDE FACTORY MOUNTED DISCONNECT SWITCH 2. PROVIDE ACCESS DOORS AND COIL CONNECTIONS ON LEFT SIDE 3. PROVIDE ACCESS DOORS AND COIL CONNECTIONS ON RIGHT SIDE 4. PROVIDE 2" SPRING ISOLATORS ON SUPPLY FANS 5. FILTER MEDIA MERV 8 WITH 6.3" ALLOWANCE ADDED FOR MERV 13																								

- REMARKS:**
1. PROVIDE FACTORY MOUNTED DISCONNECT SWITCH
 2. PROVIDE ACCESS DOORS AND COIL CONNECTIONS ON LEFT SIDE
 3. PROVIDE ACCESS DOORS AND COIL CONNECTIONS ON RIGHT SIDE
 4. PROVIDE 2" SPRING ISOLATORS ON SUPPLY FANS
 5. FILTER MEDIA MERV 8 WITH 0.3" ALLOWANCE ADDED FOR MERV 13

AIR COOLED CONDENSER UNIT SCHEDULE													
MARK	LOCATION	SERVES	NOMINAL TONS	NET CAPACITY (MBH)	SENSIBLE CAPACITY (MBH)	ELECTRICAL DATA			REFRIGERANT	SEER/EER	OPERATING WEIGHT (LBS.)	TYPICAL UNIT MFG & MODEL NO.	REMARKS:
						VOLT/Ø	MCA	POWER (KW)					
ACCU-1	ROOF	BC-1	5	56.7	39.8	208Ø	21.2	4.56	R-410A	14/12	205	YORK YCD06831S	1
ACCU-2	ROOF	BC-2	4	44.2	39.2	208Ø	18.4	4.1	R-410A	15.75/12.75	200	YORK YCD46831S	1
REMARKS: 1. PROVIDE FACTORY MOUNTED DISCONNECT.													
2.													
3.													

- REMARKS:**
1. PROVIDE FACTORY MOUNTED DISCONNECT.
 - 2.
 - 3.

GRAVITY VENTILATOR SCHEDULE								
MARK	LOCATION	SERVICE	THROAT AREA (SQ. FT.)	HOOD AREA (SQ. FT.)	AIR FLOW (CFM)	SP (IN. W.G.)	TYPICAL UNIT MFG & MODEL NO.	REMARKS:
GV-1	ROOF	BC-1 AND BC-2 OUTSIDE AIR	1	4.7	600	0.026	GREENHECK GRSI-16	1, 2
REMARKS:	1. PROVIDE WITH WIRE MESH BIRD SCREEN 2. PROVIDE MANUFACTURER'S 8-INCH INSULATED ROOF CURB							

- REMARKS:**
1. PROVIDE WITH WIRE MESH BIRD SCREEN
 2. PROVIDE MANUFACTURER'S 18-INCH INSULATED ROOF CURB

REGISTERS, GRILLES, AND DIFFUSERS							
MARK	APPLICATION	MATERIAL	TYPE	FINISH	FACE SIZE	DESIGN EQUIP.	REMARKS
D1	SUPPLY	STEEL	LAY IN	WHITE	24X24	PRICE SCD	-
D2	SUPPLY	STEEL	LAY IN	WHITE	12X12	PRICE SCD	-
D3	SUPPLY	STEEL	SIDE WALL	WHITE	SEE PLANS	PRICE S10	-
G1	RETURN/EA	STEEL	LAY IN	WHITE	24X24	PRICE PDOR	-
G2	RETURN/EA	STEEL	LAY IN	WHITE	12X12	PRICE PDOR	-
G3	RETURN/EA	STEEL	SIDE WALL	WHITE	SEE PLANS	PRICE S30	-

- REMARKS:**