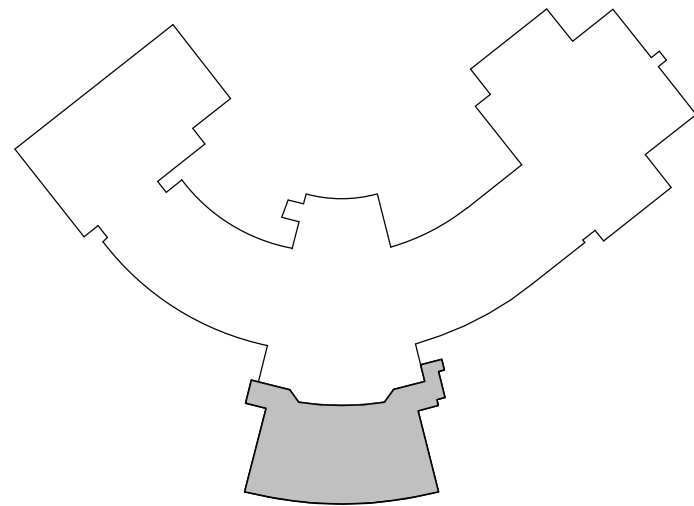


**1 LOWER LEVEL FLOOR PLAN**  
SCALE: 1/8" = 1'-0"



**KEY PLAN - LOWER LEVEL**  
NOT TO SCALE



## GENERAL FLOOR PLAN NOTES

1. FIELD VERIFY ALL DIMENSIONS AND CONDITIONS PRIOR TO PROCEEDING WITH WORK. IMMEDIATELY NOTIFY THE ARCHITECT OF ANY DISCREPANCY. ADJUST DIMENSIONS OF NEW WORK AS REQUIRED BY THE ARCHITECT.
2. DIMENSIONS SHOWN ON PLANS ARE TO FACE OF NOMINAL MASONRY WALLS, THE CENTER LINES OF COLUMNS, OR THE FINISHED FACE OF GWB ASSEMBLIES UNLESS NOTED OTHERWISE. DIMENSION STRINGS THROUGH WINDOW OPENINGS ARE TO FACE OF WALL AND DO NOT INCLUDE SILL OVERHANGS.
3. ALL PARTITIONS ARE CENTERED ON COLUMN LINES UNLESS NOTED OR DIMENSIONED OTHERWISE.
4. REFER TO DRAWING GP801 FOR WALL TYPE DESIGNATIONS AND DESCRIPTIONS.
5. ALL INTERIOR CMU WALLS ARE TYPE XXX UNLESS NOTED OTHERWISE.
6. SIMILAR DETAILS APPLY TO SIMILAR CONDITIONS, UNLESS NOTED OTHERWISE.
7. SEE STRUCTURAL DRAWINGS FOR ADDITIONAL REQUIREMENTS INCLUDING BUT NOT LIMITED TO: LINTELS, BRACING, BOND BEAMS, BEARING WALL LOCATIONS, GROUTING, REINFORCING REQUIREMENTS, AND LOCATIONS AND SIZES OF CONCRETE PADS.
8. GC SHALL COORDINATE ALL MECHANICAL CHASES AND WALL OPENINGS WITH EC, ME, AND PC. GC SHALL PROVIDE ALL OPENINGS AND LINTELS AS REQUIRED. COORDINATE MASONRY OPENING SIZES AND DETAILS FOR LOWERS WITH MC.
9. ALL NEW DRINKING FOUNTAINS, FLOOR DRAINS, LAVATORIES, WATER CLOSETS, URINALS TO BE PROVIDED BY PC.
10. PROVIDE CONTINUOUS 8" WIDE 16 GA GALVANIZED STEEL STRAP IN METAL STUD WALLS TO RECEIVE NEW CASEWORK, SHELVING, TOILET PARTITIONS, TOILET ACCESSORIES, LOCKERS, OR OTHER WALL MOUNTED EQUIPMENT. SEE EQUIPMENT DRAWINGS, PARTIAL PLANS, AND INTERIOR ELEVATIONS. COORDINATE EXACT LOCATIONS IN FIELD. PROVIDE CONTINUOUS METAL STAPPING ACROSS FACE OF STUDS IN ALL LOCATIONS WHERE NEW CABINETS ABUT NEW STUD WALLS AS FOLLOWS:  
A. TOP AND BOTTOM OF BASE CABINETS  
B. TOP AND BOTTOM OF WALL CABINETS  
C. TOP, BOTTOM, AND MIDPOINT OF TALL CABINETS  
D. TOP, BOTTOM, AND MIDPOINT OF COUNTERTOP SUPPORTS  
E. TOP, BOTTOM, AND MIDPOINT OF SHELVING STANDARDS
13. AT CMU INFILL, TOOTH IN AND PATCH WALL AREA. RESTORE EXPOSED FINISHES OF ADJACENT AREAS AND EXTEND FINISHES INTO ADJOINING CONSTRUCTION TO REMAIN IN THE MANNER THAT ELIMINATES EVIDENCE OF PATCHING AND REFINISHING.
14. GENERAL CONTRACTOR TO PROVIDE ALL CONCRETE SLAB REMOVALS AND SLAB INFILLS FOR ALL CONTRACTORS INSIDE THE BUILDING. EXCAVATION AND BACKFILL IS BY EACH CONTRACTOR FOR THEIR OWN WORK. CONTRACTORS SHALL COORDINATE EXACT SIZES AND LOCATIONS.

## NEW WORK PLAN LEGEND

- NEW CONCRETE FROST-PROOF LANDING OR RAMP. REFER TO DIMENSIONS AND DETAILS FOR CONSTRUCTION INFORMATION.
- INFILL NEW CONCRETE FLOOR SLAB WHERE REMOVED. HATCH INDICATES APPROXIMATE EXTENT OF INFILL. COORDINATE ALL TRADES. SEE STRUCTURAL DRAWINGS FOR SLAB INFILL INFORMATION.

## NEW CONSTRUCTION KEYNOTES

1. NOT USED.
2. DISPLAY CASE. SEE 6A/GP802 AND GP801 FOR DETAILS.
3. INFILL EXISTING WALL OPENING WITH CMU BACKUP AND SALVAGED FACE BRICK TO MATCH EXISTING ADJACENT MASONRY. TOOTH IN BRICK AND CMU.
4. FORMED METAL COLUMN ENCLOSURE. SEE DETAIL 5/GP802.
5. NOT USED.
6. PROVIDE LOOSE STEEL LINTEL. SEE STRUCTURAL DRAWINGS FOR ADDITIONAL INFORMATION. GC SHALL PROVIDE ALL OPENINGS AND LINTELS IN MASONRY WALLS FOR THE WORK OF OTHER TRADES. COORDINATE WITH MEP DRAWINGS FOR SIZES AND LOCATIONS.
7. ALTERNATE 2-G: OPERABLE MARKERBOARD PARTITION. BASE BID SHALL BE WALL TYPE A1 WITH PAINTED DRY ERASE COATING ON BOTH SIDES.
8. ALTERNATE 2-G: OPERABLE PARTITION POCKET DOOR FOR OPERABLE MARKERBOARD PARTITION.
9. FOLDING GLASS PARTITION WITH INSULATING DOOR.
10. PAINT WALL FLOOR TO CEILING WITH DRY ERASE COATING. REFER TO SPECIFICATIONS FOR ADDITIONAL INFORMATION.
11. FLAT PANEL DISPLAY BY OWNER. INSTALL (2) ROWS X 48" LONG FIRE-TREATED WOOD BACKING PLATE WITHIN WALL. COORDINATE EXACT LOCATION IN FIELD.
12. SUNSHADE CANOPY ABOVE DOORS. SEE SECTION 4/GP810.
13. WALL TO RECEIVE VINYL WALL COVERING (VWC) WITH CUSTOM GRAPHIC.
14. METALLIC LAMINATE PANEL CLADDING SYSTEM. SEE WALL SECTION 5/GP801.
15. TRACK AND CABLE ART DISPLAY SYSTEM MOUNTED AT 8'-0" AFF.
16. ART DISPLAY RAIL SYSTEM MOUNTED AT 6'-0" AFF.
17. MANUALLY OPERATED OVERHEAD DOOR IN EXISTING OPENING.
18. BUILT-IN BENCH. SEE GP801 FOR DETAILS.

Revision:  
ISSUED FOR BID  
02/01/2021  
BID ADDENDUM  
02/01/2021  
02/01/2021

LOWER LEVEL FLOOR PLAN

PEEKSKILL HIGH SCHOOL

Date: 02/01/2021

Drawn by: JN

Alterations to School District Facilities

Phase Two

Peekskill City School District  
Peekskill, NY

Consultant:

Seal

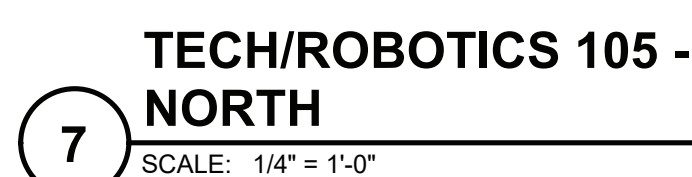
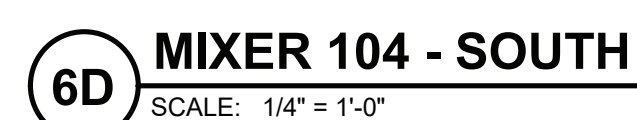
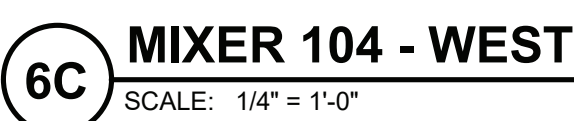
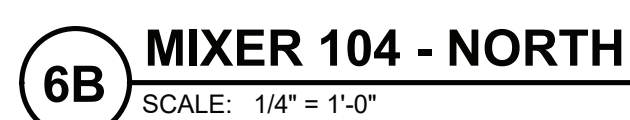
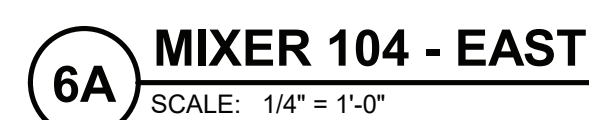
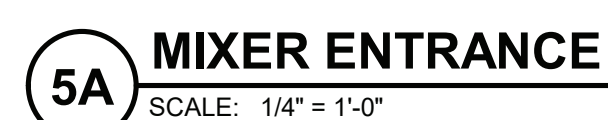
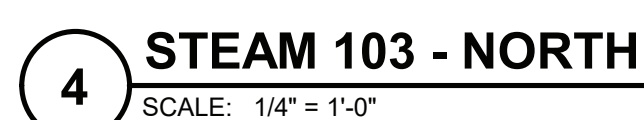
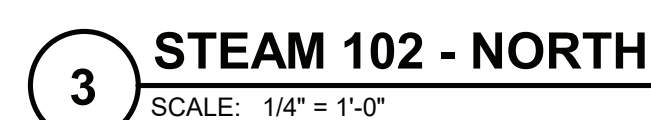
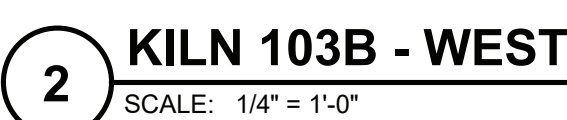
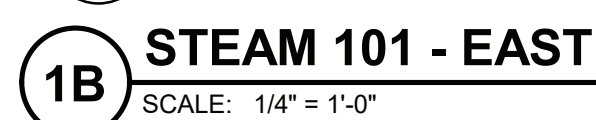
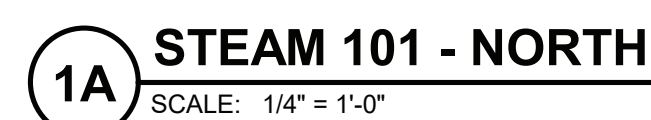
**MOSAIC**  
ASSOCIATES

Mosaic Associates Architects, DPC  
The Fire Building, 2 Third Street, Suite 440, Troy, NY 12180

**GP**  
**101**

SED NUMBERS:  
BEFORE WORK IS STARTED, CONTRACTOR SHALL VERIFY ALL THE DIMENSIONS AT THE SITE AND IMMEDIATELY NOTIFY THE ARCHITECT OF ANY DISCREPANCIES. ALTERATION OF THIS DOCUMENT BY OTHER THAN AN AUTHORIZED LICENSED REGISTERED ARCHITECT IS ILLEGAL AND A VIOLATION OF SECTION 7207 OF THE NEW YORK STATE EDUCATION LAW.





## CASEWORK LEGEND

X0000 ← INDICATES MODEL NUMBER  
00.00" D ← INDICATES CABINET DEPTH



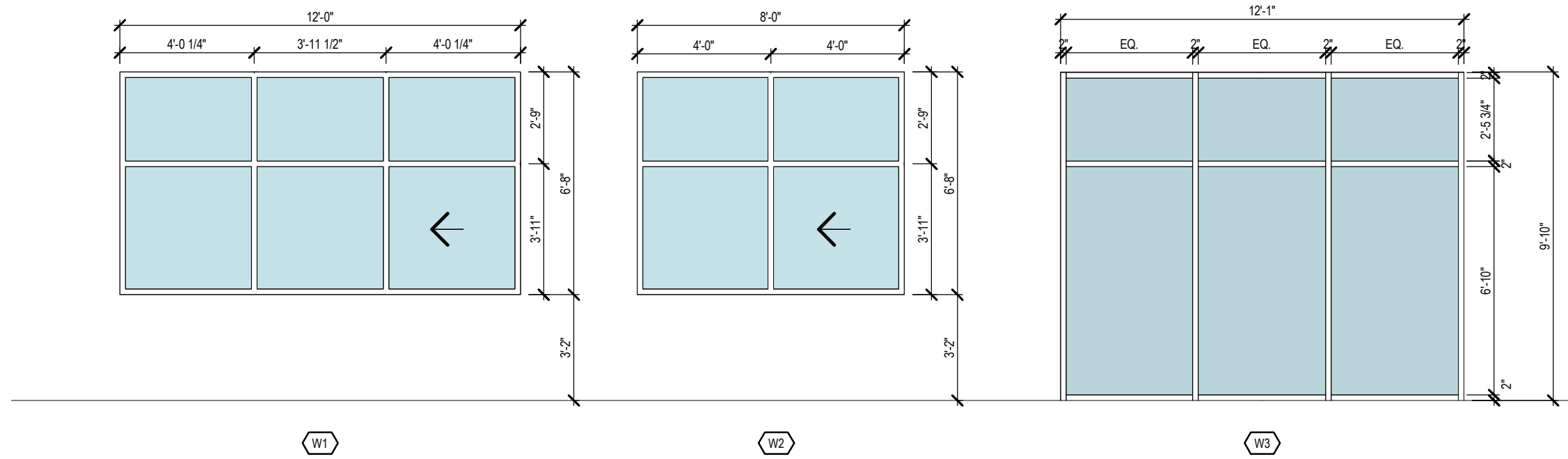
WINDOW SCHEDULE										
WINDOW TYPE	FRAME CONSTRUCTION	GLAZING MATERIAL	FRAME FINISH	WINDOW SASH OPERATION	HEAD DETAIL	JAMB DETAIL	INTERMEDIATE DETAIL	SILL DETAIL	FIRE RATING	REMARKS
W1	AL	INSG	FF	SL	10/GP 704	11/GP 704	12/GP 704	13/GP 704	-	PROVIDE MANUAL ROLLER SHADES ABOVE WINDOWS
W2	AL	INSG	FF	SL	10/GP 704	11/GP 704	12/GP 704	13/GP 704	-	PROVIDE MANUAL ROLLER SHADES ABOVE WINDOWS
W3	AL	INSG	FF	FX	11/GP 705	12/GP 705, 10/GP 802	3/GP 705, 6/GP 705	7/GP 705	-	
W4	AL	FG2	FF	FX	14/GP 704	15/GP 704	-	16/GP 704	60	
W5	HM	IRSG	MP	FX	2/GP 703	6/GP 703	-	11/GP 703	-	
W6	AL	FG2	FF	FX	17/GP 704	18/GP 704	-	19/GP 704	120	

GLASS AND GLAZING TYPES

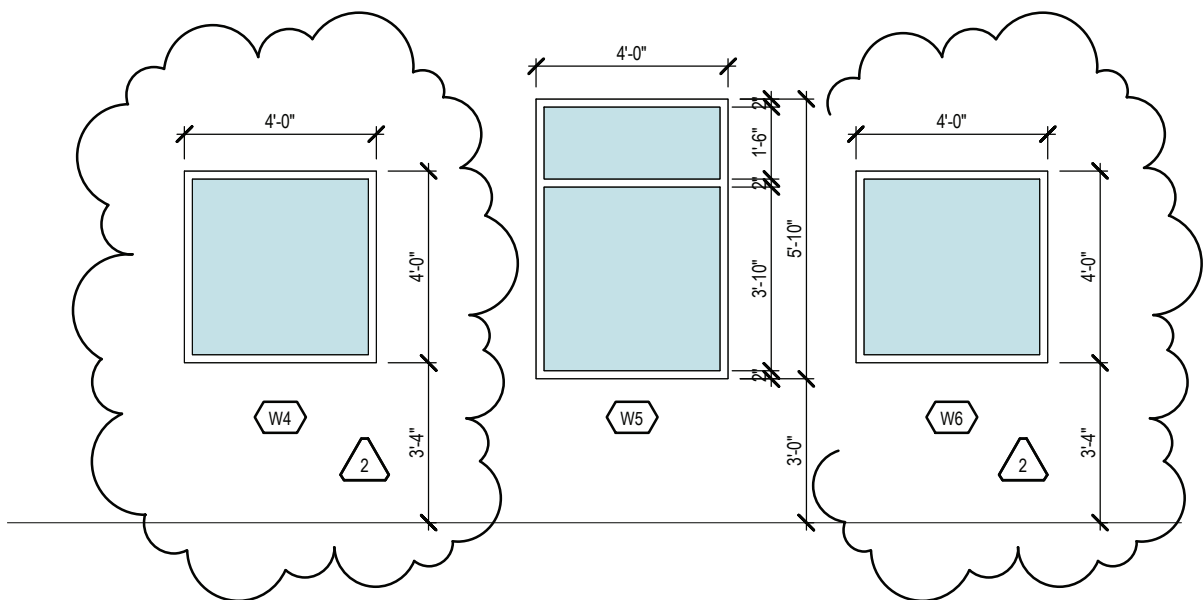
INLG	INSULATED LAMINATED GLAZING
INSG	INSULATED SAFETY GLAZING
IP	INSULATED METAL PANEL
IRSG	IMPACT RESISTANT SAFETY GLASS
FG1	20 MINUTE FIRE PROTECTION RATED GLASS
FG2	FIRE RESISTANCE RATED GLASS, RATING VARIES
SG	INSULATED SPANDREL GLASS PANEL

WINDOW SASH OPERATION

AW	AWNING
CS	CASEMENT
DH	DOUBLE HUNG
FX	FIXED
SL	SLIDER
SH	SINGLE HUNG

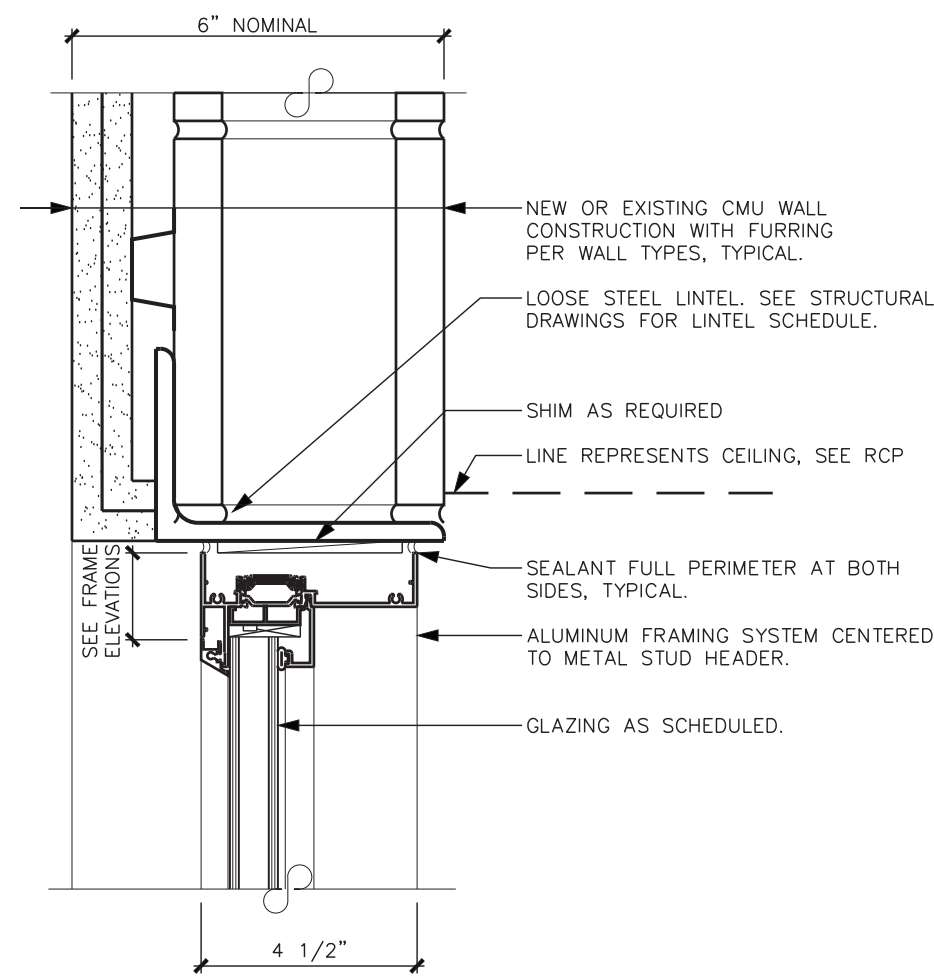


1 EXTERIOR WINDOW TYPES  
SCALE: 1/4" = 1'-0"

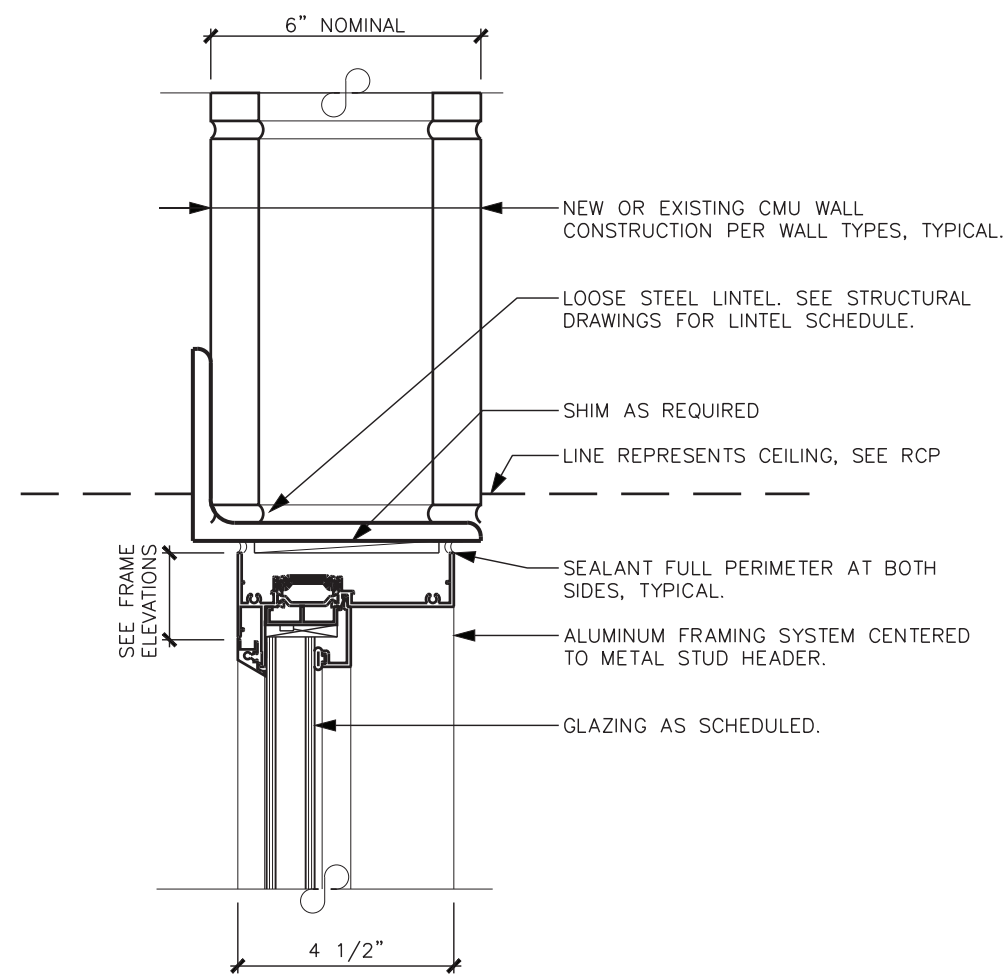


2 INTERIOR WINDOW TYPES  
SCALE: 1/4" = 1'-0"

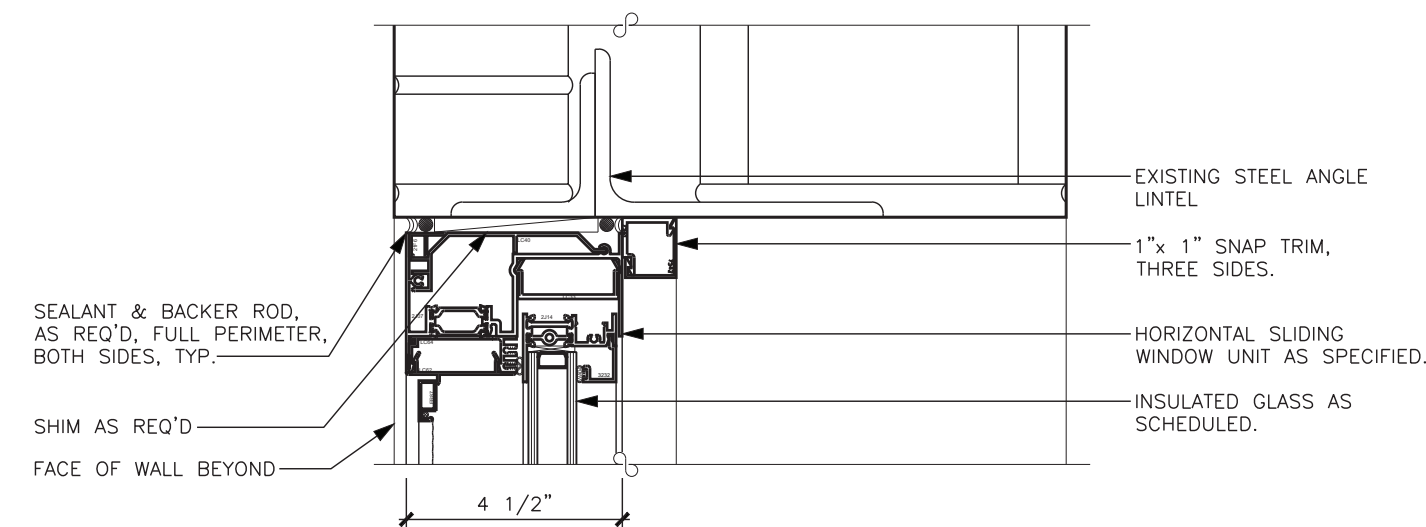




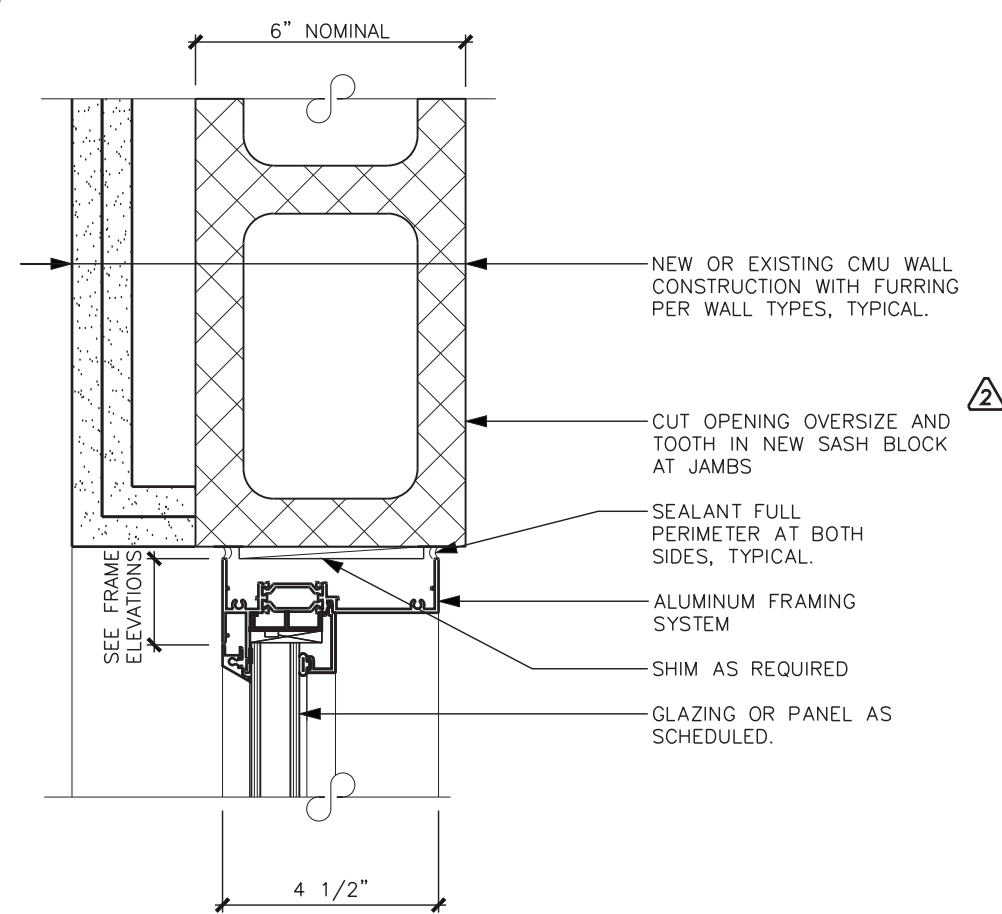
**17 HEAD DETAIL**  
SCALE : 3"=1'-0"



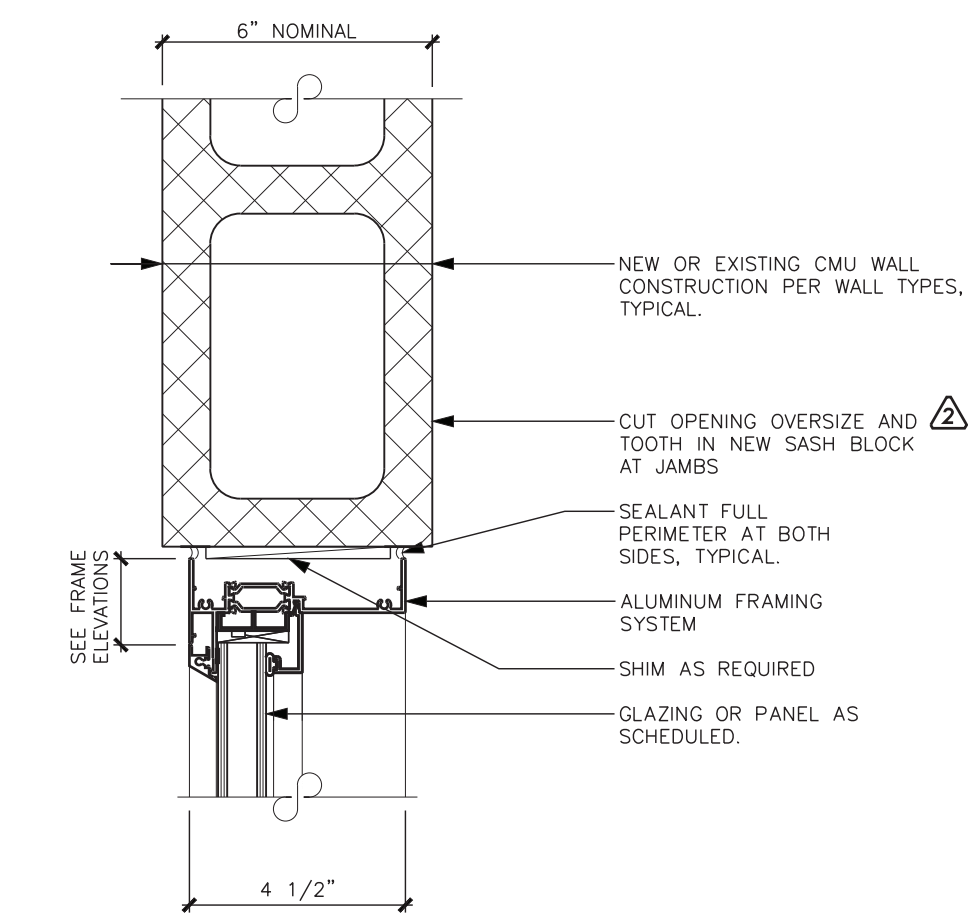
**14 HEAD DETAIL**  
SCALE : 3"=1'-0"



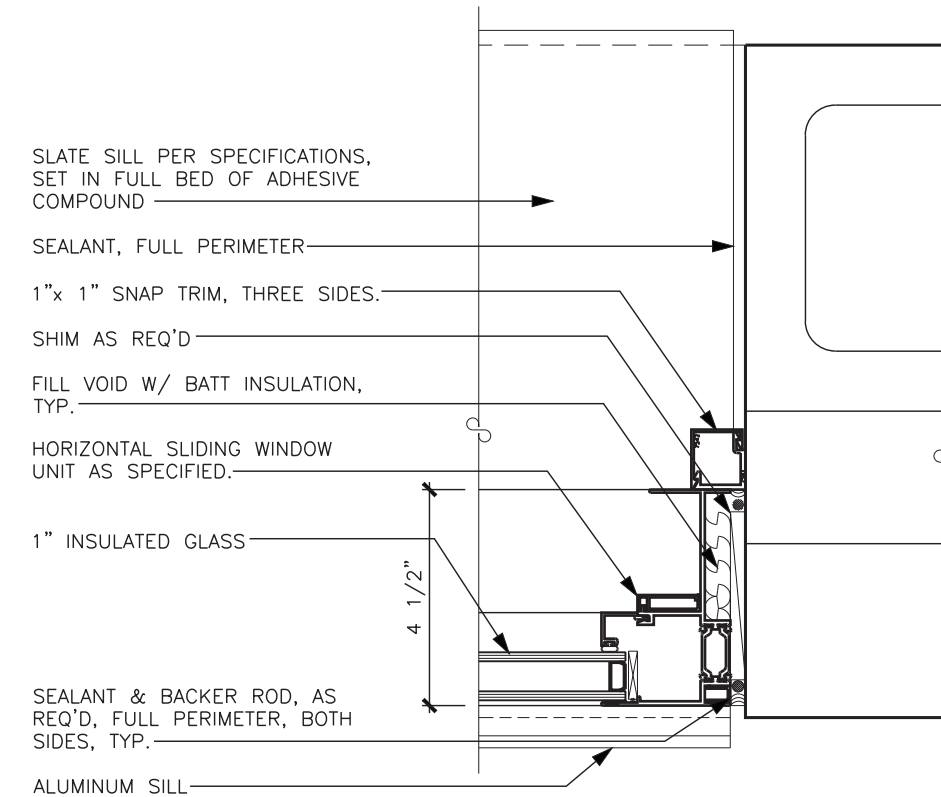
**10 HEAD DETAIL**  
SCALE : 3"=1'-0"



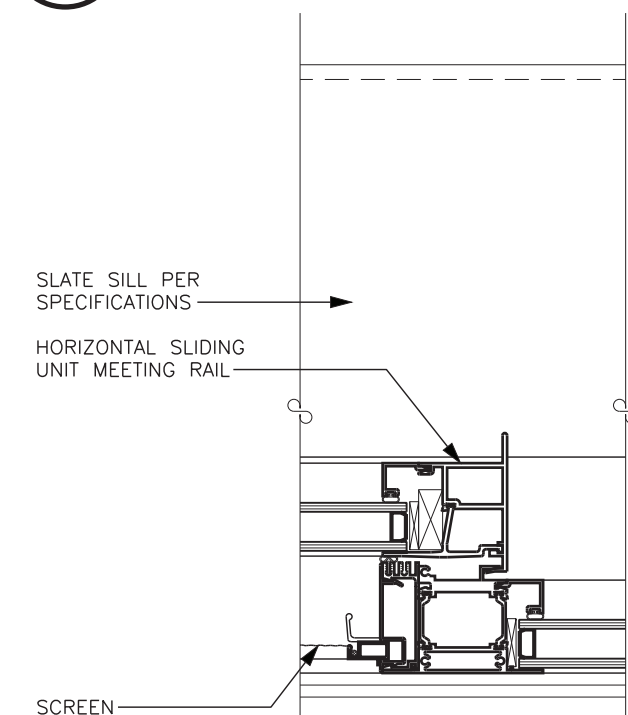
**18 JAMB DETAIL**  
SCALE : 3"=1'-0"



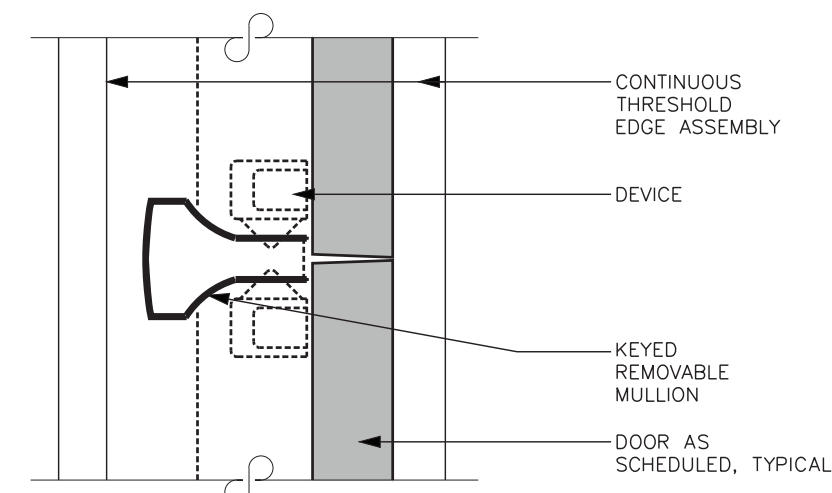
**15 JAMB DETAIL**  
SCALE : 3"=1'-0"



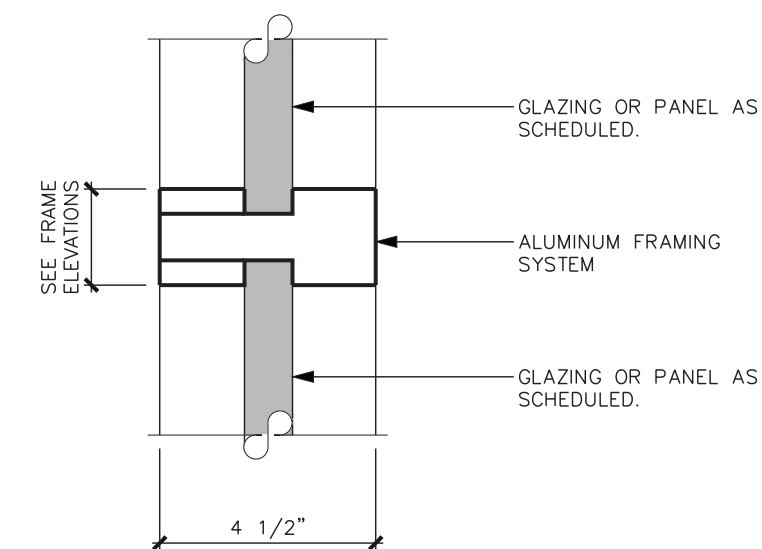
**11 JAMB DETAIL**  
SCALE : 3"=1'-0"



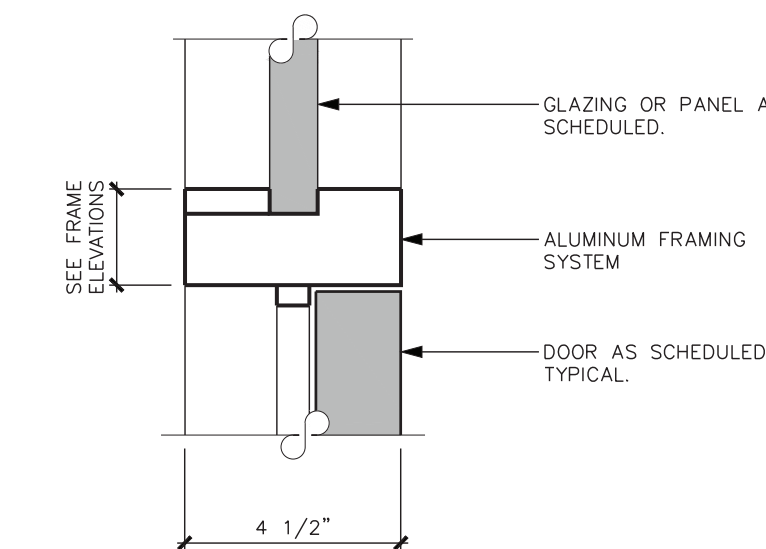
**12 INTERMEDIATE DETAIL**  
SCALE : 3"=1'-0"



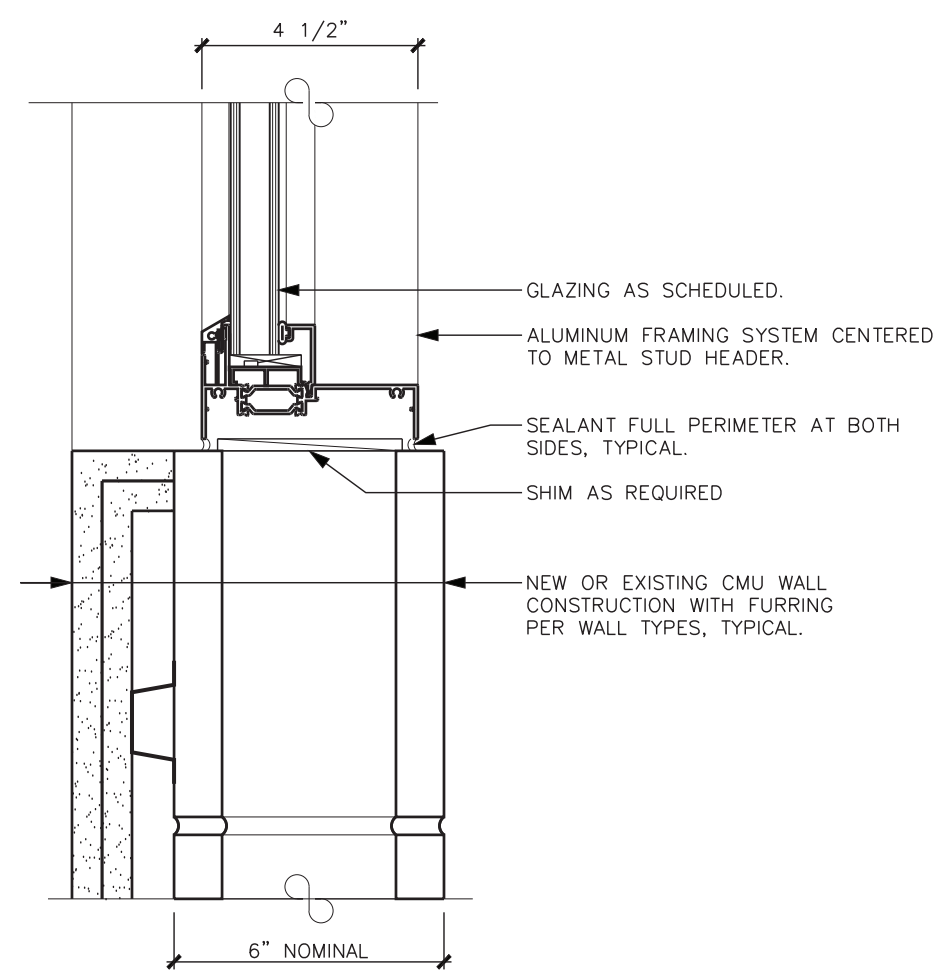
**9 INTERMEDIATE DETAIL**  
SCALE : 3"=1'-0"



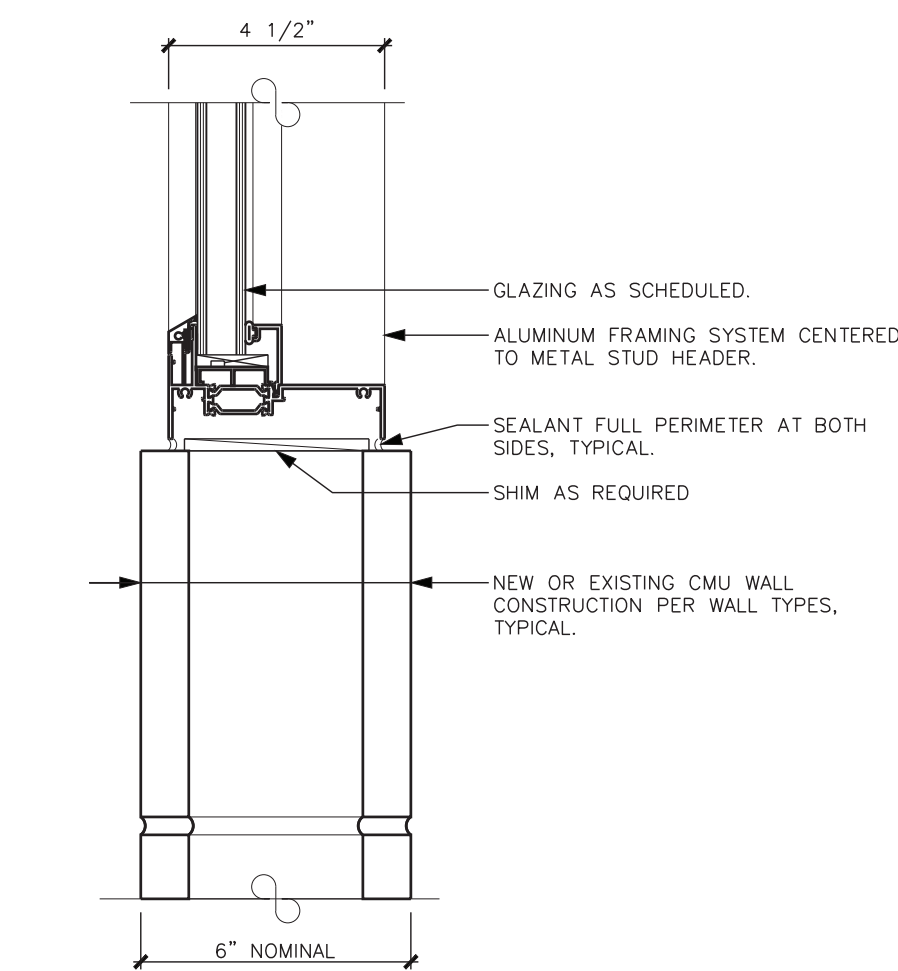
**7 INTERMEDIATE DETAIL**  
SCALE : 3"=1'-0"



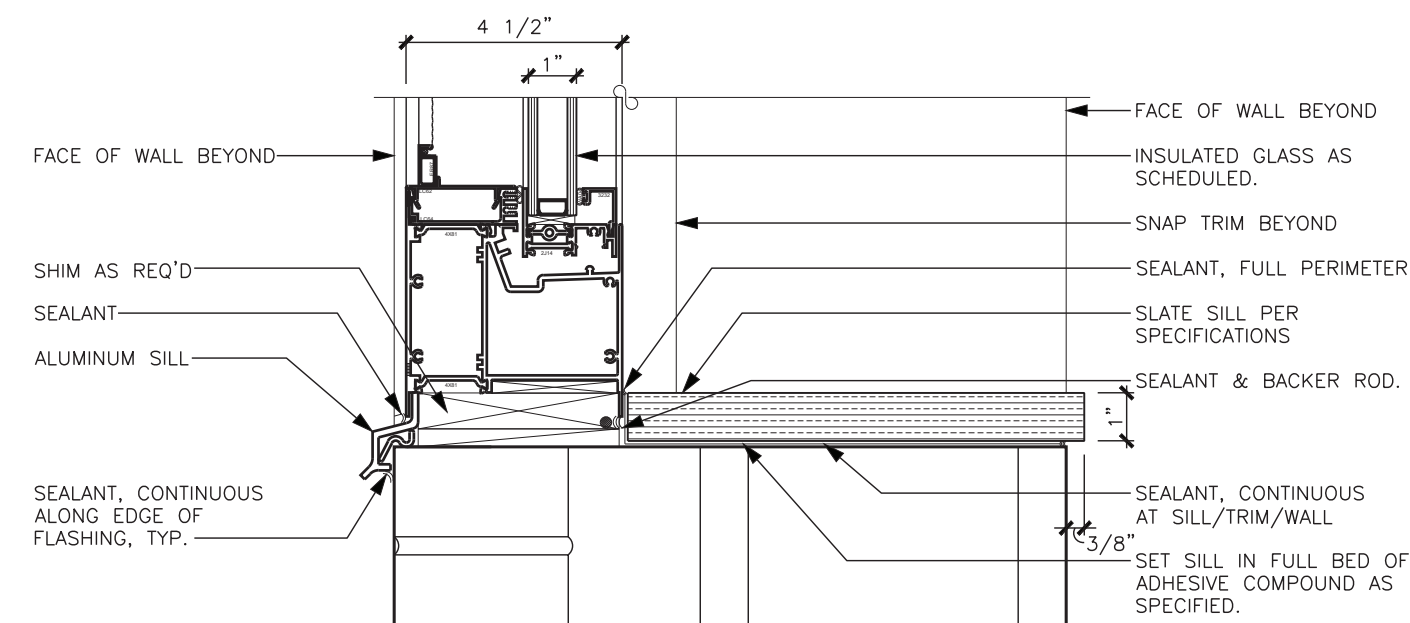
**3 INTERMEDIATE DETAIL**  
SCALE : 3"=1'-0"



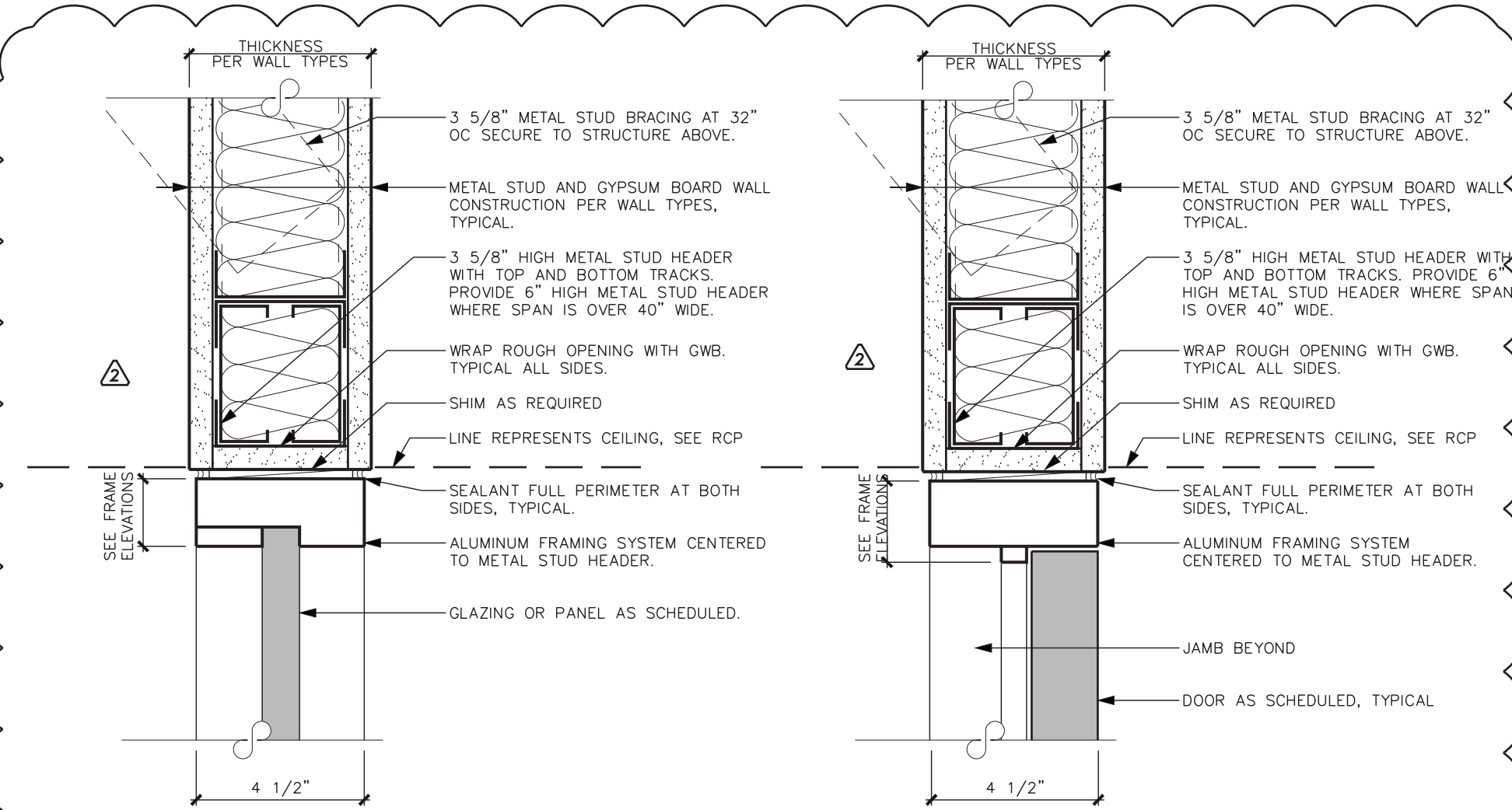
**19 SILL DETAIL**  
SCALE : 3"=1'-0"



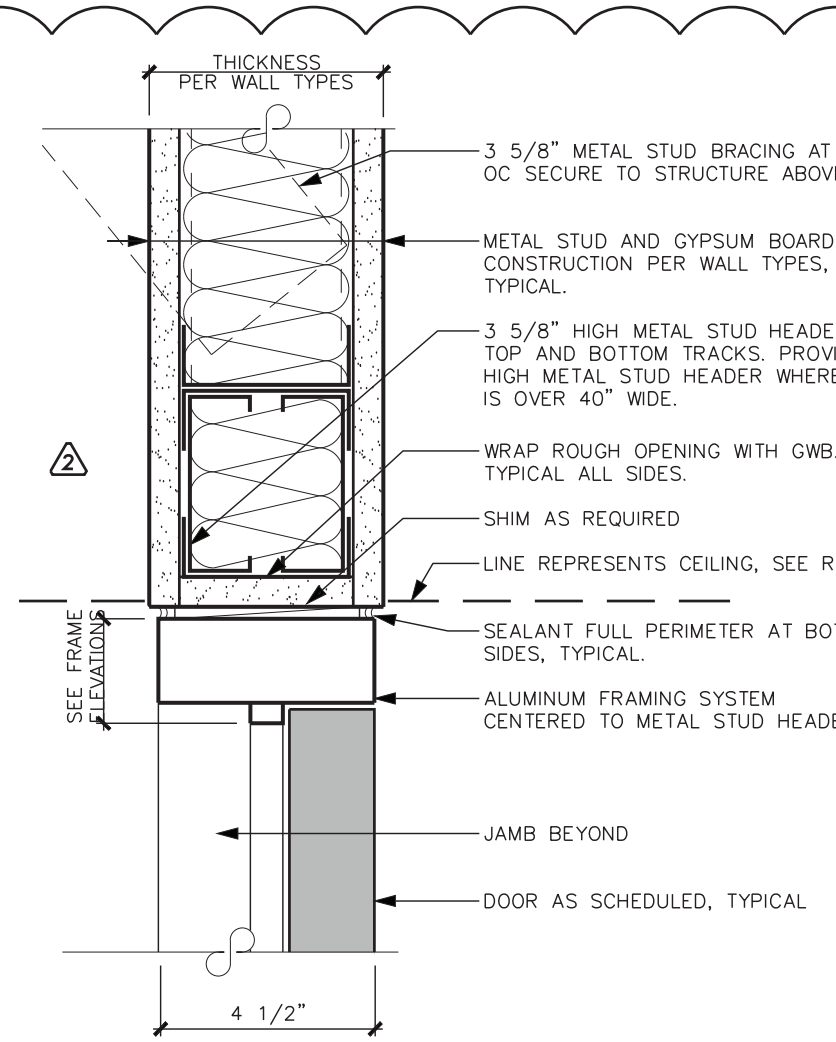
**16 SILL DETAIL**  
SCALE : 3"=1'-0"



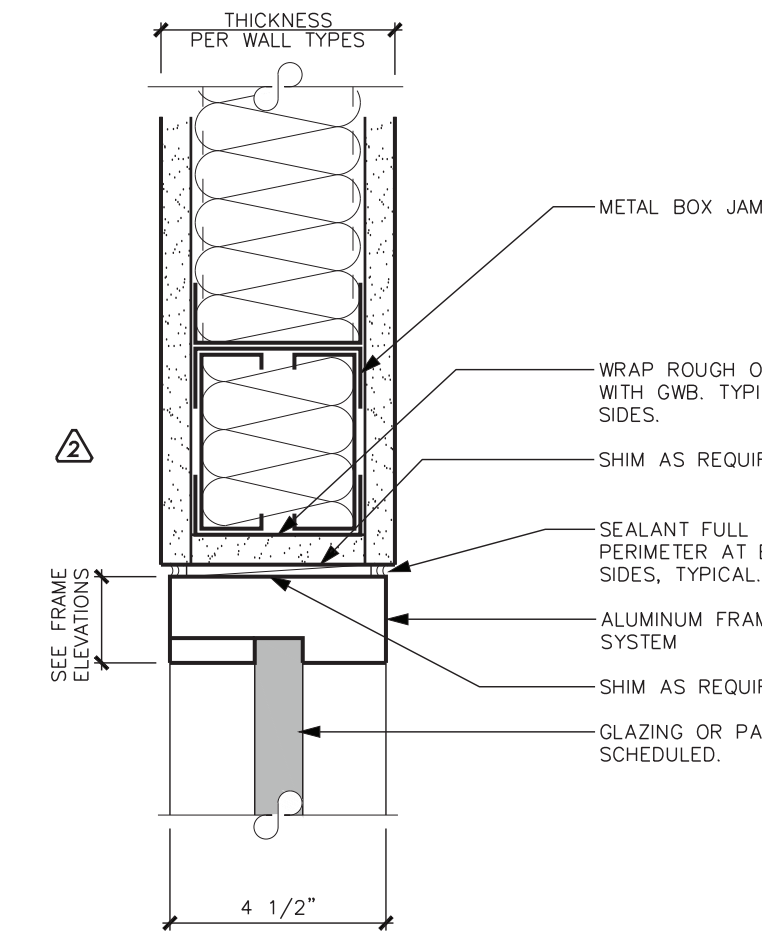
**13 SILL DETAIL**  
SCALE : 3"=1'-0"



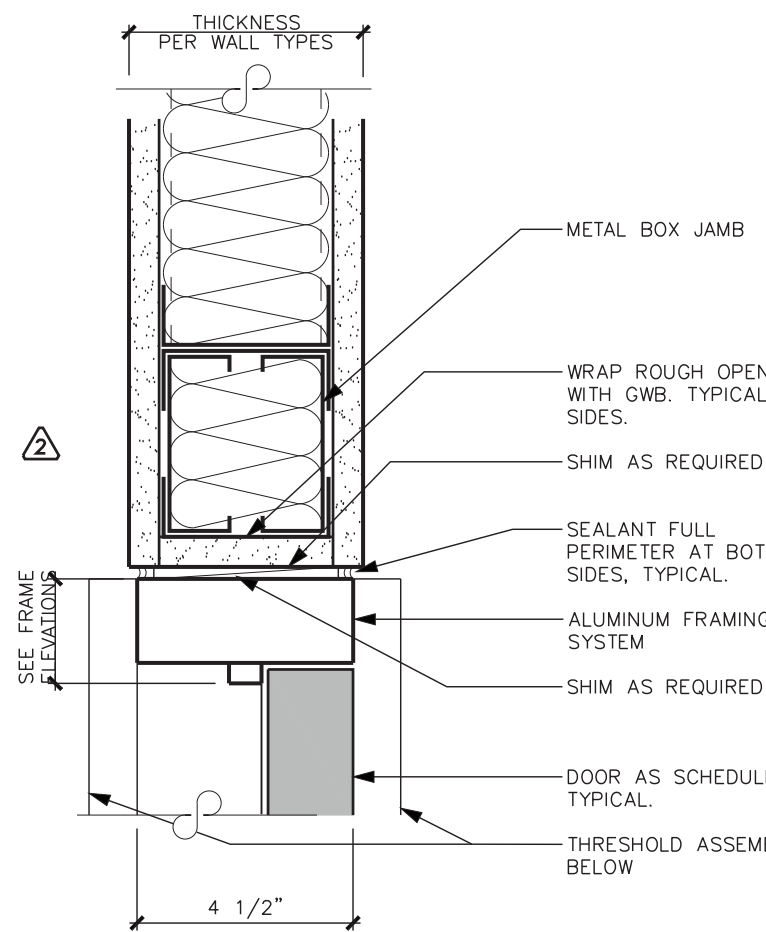
**5 HEAD DETAIL**  
SCALE : 3"=1'-0"



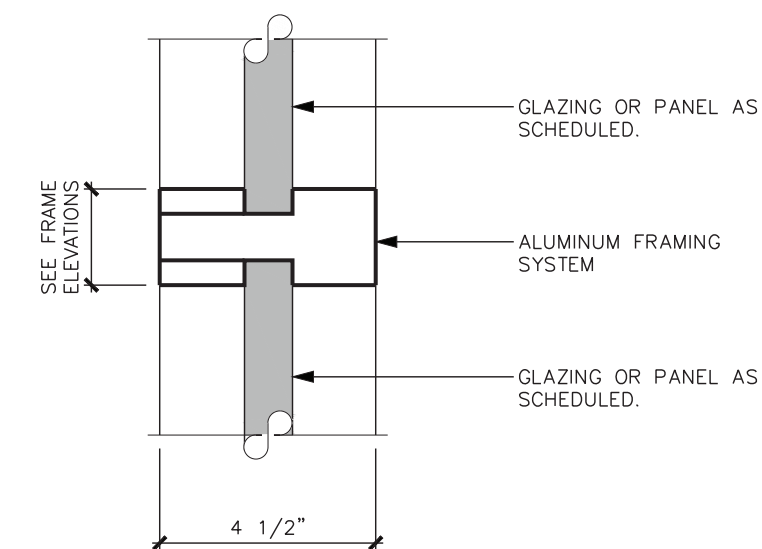
**1 HEAD DETAIL**  
SCALE : 3"=1'-0"



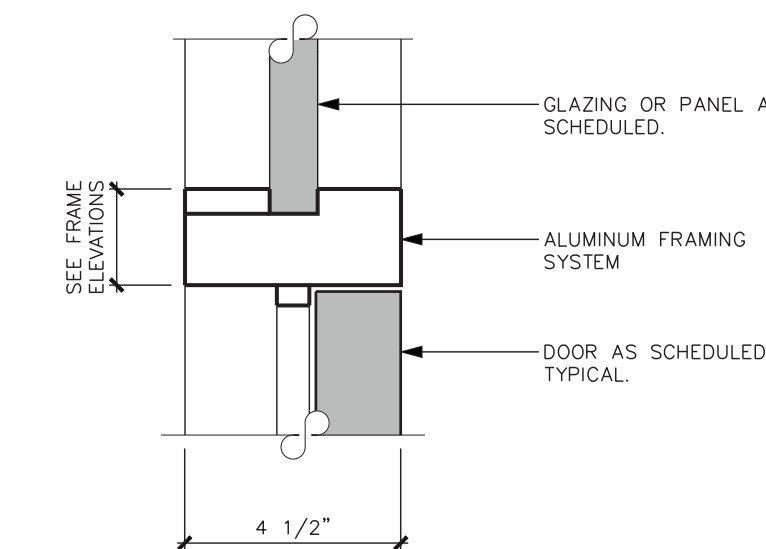
**6 JAMB DETAIL**  
SCALE : 3"=1'-0"



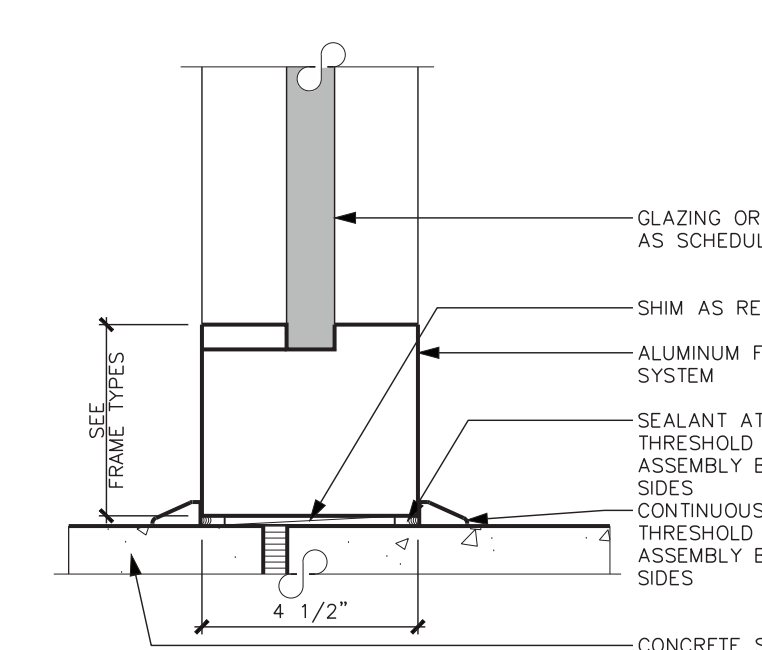
**2 JAMB DETAIL**  
SCALE : 3"=1'-0"



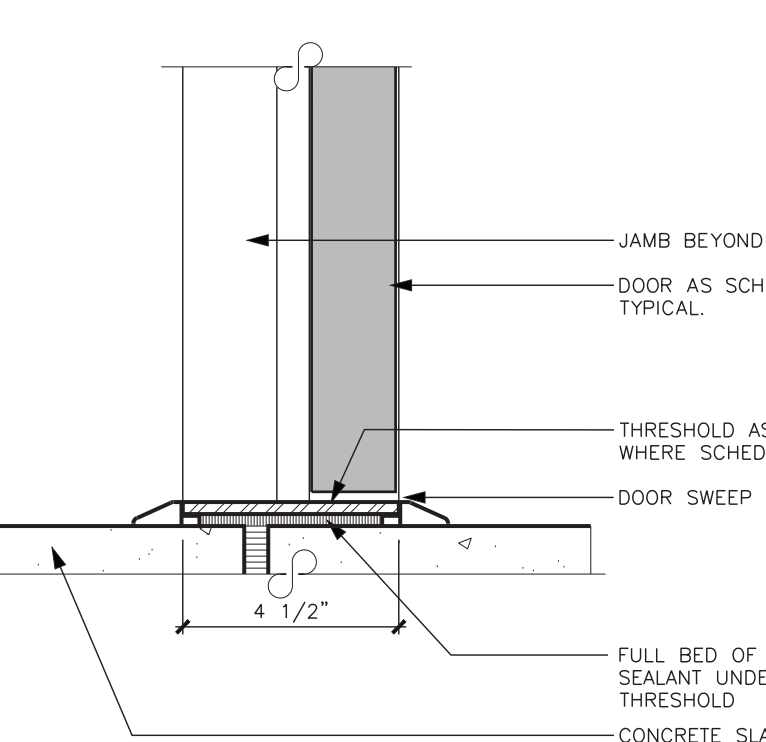
**7 INTERMEDIATE DETAIL**  
SCALE : 3"=1'-0"



**3 INTERMEDIATE DETAIL**  
SCALE : 3"=1'-0"

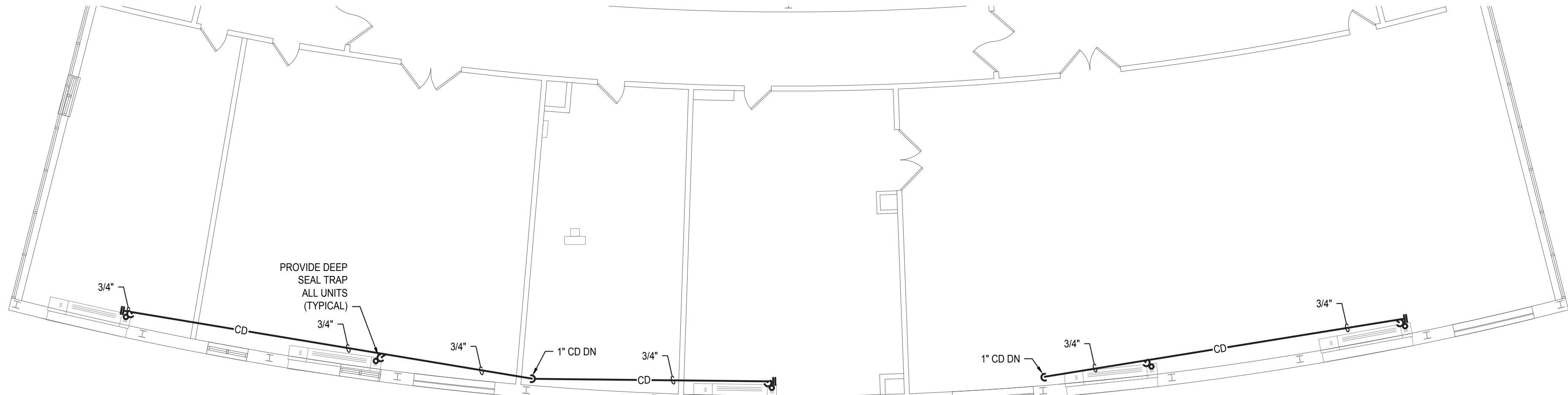


**8 SILL DETAIL**  
SCALE : 3"=1'-0"



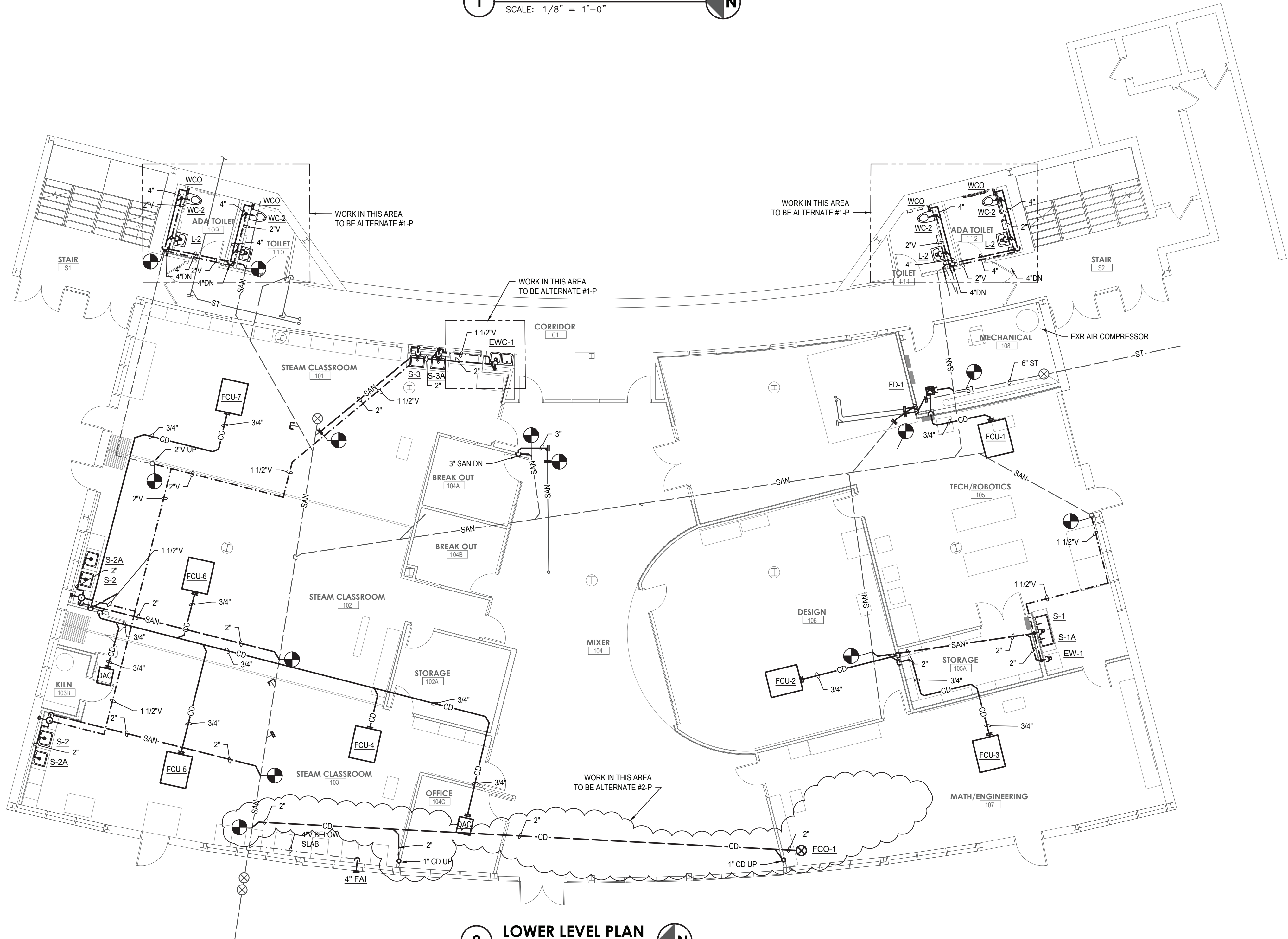
**4 SILL DETAIL**  
SCALE : 3"=1'-0"



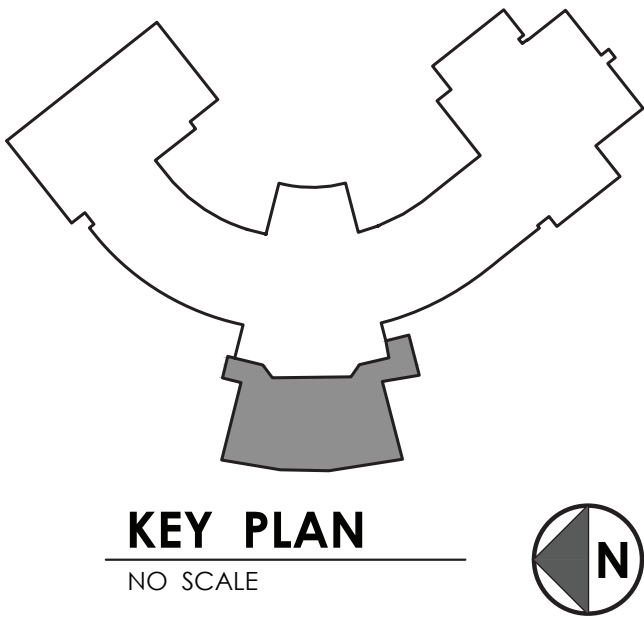


ALL WORK REQUIRED FOR THE AC DRAINS FOR THESE UNITS SHALL BE A PART OF ALTERNATE #2-P

**1 INTERMEDIATE LEVEL PLAN**  
SCALE: 1/8" = 1'-0"



**2 LOWER LEVEL PLAN**  
SCALE: 1/8" = 1'-0"



S.E.D. NUMBER : █ PEESKILL HIGH SCHOOL : 66-15-00-01-0-010-022 █ HILLCREST ELEMENTARY : 66-15-00-01-0-004-016 █ URIAH HILL ELEMENTARY : 66-15-00-01-0-007-015  
BEFORE WORK IS STARTED, CONTRACTOR SHALL VERIFY ALL THE DIMENSIONS AT THE SITE AND IMMEDIATELY NOTIFY THE ARCHITECT OF ALL DISCREPANCIES. █ ALTERATION OF THE DOCUMENT BY OTHER THAN AN AUTHORIZED LICENSED REGISTERED ARCHITECT IS ILLEGAL AND A VIOLATION OF SECTION 7307 OF THE NEW YORK STATE EDUCATION LAW.

Drawing Title : LOWER LEVEL DRAINAGE PLAN  
Drawing Number : PP 301  
Date : October 2, 2020  
Drawn by : DAK

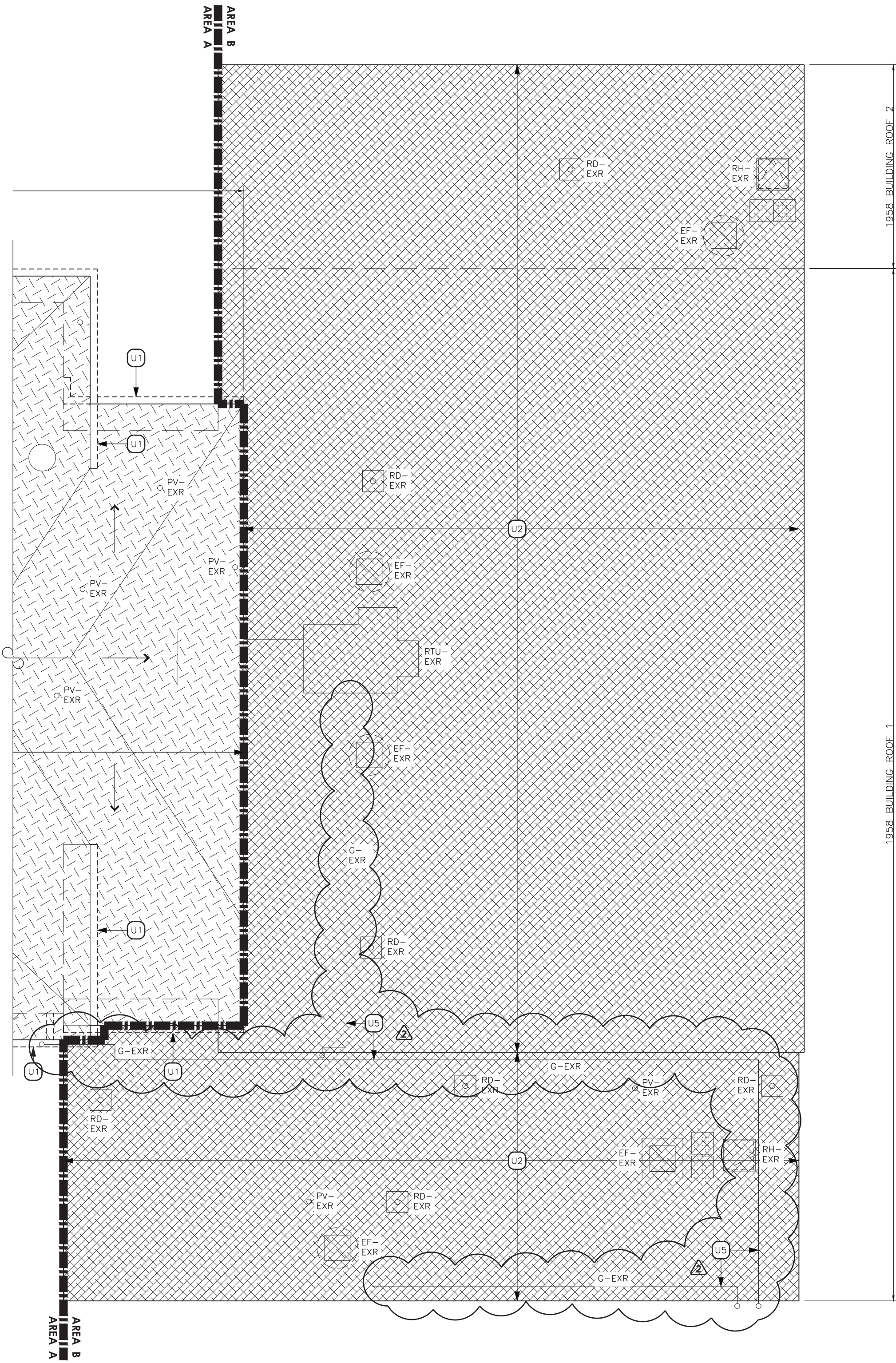
**Alterations to School District Facilities**  
**Phase Two**  
Peekskill City School District  
Peekskill, New York

**MOSAIC ASSOCIATES**  
Engineered Solutions  
440 Third Street, Suite 440  
Peekskill, NY 10870  
www.mosaicassociates.net  
Tel: 845.238.2310  
Fax: 845.238.2311  
Cell: 845.238.2312  
Email: info@mosaicassociates.net









**1** PARTIAL ROOF DEMO PLAN - AREA B  
SCALE: 1/8"=1'-0"

## DEMOLITION ROOF PLAN NOTES

- CONTRACTOR IS RESPONSIBLE FOR FIELD VERIFYING ALL ROOF CONDITIONS PRIOR TO START OF CONSTRUCTION. NOTIFY THE ARCHITECT OF ANY DISCREPANCY IMMEDIATELY. ADJUST DIMENSIONS OF NEW WORK AS REQUIRED BY THE ARCHITECT.
- FIELD VERIFY AND REMOVE ALL ITEMS NECESSARY FOR INSTALLATION OF NEW WORK.
- COMPLETELY REMOVE ALL EXISTING ROOFING, BASE FLASHINGS, FASTENERS, ADHESIVES AND INSULATION IN AREAS TO RECEIVE NEW ROOFING. PREPARE EXISTING ROOF DECK TO RECEIVE ROOFING SYSTEM.
- PROTECT AND MAINTAIN INTEGRITY OF ITEMS THAT ARE TO EXISTING TO REMAIN. PATCH ALL REMAINING SURFACES DISTURBED BY DEMOLITION AND/OR NEW CONSTRUCTION TO MATCH EXISTING ADJACENT SURFACES.
- REMOVE AND REINSTALL ANY EXISTING EXTERIOR LIGHT FIXTURES, CONDUITS, MECHANICAL UNITS, ANTENNAE, EQUIPMENT, ETC AS REQUIRED FOR INSTALLATION OF NEW ROOFING SYSTEM.
- SIMILAR DETAILS SHALL APPLY TO SIMILAR CONDITIONS UNLESS OTHERWISE INDICATED.

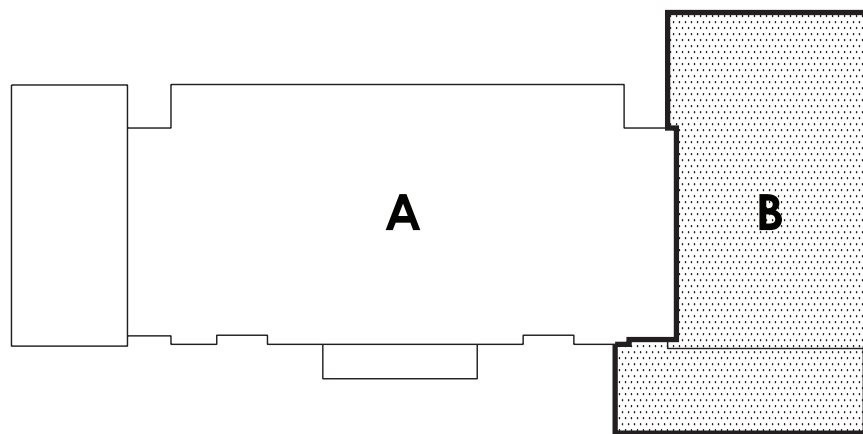
## DEMOLITION ROOF PLAN KEYNOTES

- U1** REMOVE AND REPLACE EXISTING GUTTERS AND DOWNSPOUT SYSTEM TO VERTICAL PIPES COMPLETE. EXISTING VERTICAL PIPES TO REMAIN. TURN OVER COPPER GUTTER AND DOWNSPOUT SYSTEM TO OWNER. REMOVE EXISTING WOOD FASCIA BOARD BEHIND GUTTERS COMPLETE.
- U2** SCARIFY AND PREPARE EXISTING SURFACE OF SPRAY-APPLIED ROOF SYSTEM FOR REHABILITATION.
- U3** INSPECT ENTIRE EXISTING SLATE ROOF SYSTEM AND IDENTIFY PORTIONS OF ROOF THAT REQUIRE RECONSTRUCTION OR REPLACEMENT. REFER TO SPECIFICATION 070130 FOR ADDITIONAL INFORMATION. NOTE TAR PATCH IS ASBESTOS CONTAINING.
- U4** REMOVE PORTIONS OF EXISTING SLATE ROOF SYSTEM AS ASBESTOS CONTAINING BUILDING MATERIALS IN AREAS ROOF INSPECTION IDENTIFIED AS REQUIRING RECONSTRUCTION OR REPLACEMENT (ASSUME 2,000 SF FOR BIDDING PURPOSES). TAR PATCH AT SEAMS AND PENETRATIONS IS ASBESTOS CONTAINING. SALVAGE SOUND, UNDMAGED SLATES, WITHOUT ASBESTOS TAR PATCH FOR REUSE.

- U5** REMOVE AND REINSTALL SUPPORTS AS REQUIRED TO PERFORM WORK. EXISTING GAS LINES TO REMAIN.

## ROOF RECONSTRUCTION LEGEND

- RH EXR** ROOF HATCH-EXISTING TO REMAIN
- SV EXR** SMOKE VENT-EXISTING TO REMAIN
- SK EXR** SKYLIGHT-EXISTING TO REMAIN
- LADDER EXR** LADDER-EXISTING TO REMAIN
- EF EXR** EXHAUST FAN OR ROOF HOOD-EXISTING TO REMAIN
- RTU EXR** ROOFTOP UNIT-EXISTING TO REMAIN
- CU EXR** CONDENSING UNIT-EXISTING TO REMAIN
- RD EXR** ROOF DRAIN-EXISTING TO REMAIN
- PV EXR** PLUMBING VENT-EXISTING TO REMAIN
- REHABILITATE COATED FOAM (SPF) ROOF SYSTEM**
- RECONSTRUCT AND/OR REPLACE PORTIONS OF SLATE ROOF SYSTEM WHICH WERE IDENTIFIED IN SLATE ROOFING INSPECTION**
- WALKWAY PADS**
- LINE OF WALL BELOW ROOF**
- G-EXR** EXISTING ROOFTOP GAS LINE TO REMAIN



**ROOF KEY PLAN**  
NO SCALE

S.E.D. NUMBER: ☐ PEESKILL HIGH SCHOOL: 66-15-00-01-0-010-022 ☐ HILLCREST ELEMENTARY: 66-15-00-01-0-004-016 ☐ URIAH HILL ELEMENTARY: 66-15-00-01-0-007-015  
BEFORE WORK IS STARTED, CONTRACTOR SHALL VERIFY ALL THE DIMENSIONS AT THE SITE AND IMMEDIATELY NOTIFY THE ARCHITECT OF ALL DISCREPANCIES.

ALTERATION OF THIS DOCUMENT BY OTHER THAN AN AUTHORIZED LICENSED REGISTERED ARCHITECT IS ILLEGAL AND A VIOLATION OF SECTION 7-207 OF THE NEW YORK STATE EDUCATION LAW.

Drawing Title :

PARTIAL ROOF  
DEMOLITION PLAN - AREA B

Revision :

ISSUED FOR BID  
2/01/2021  
AS2

Alterations to School District Facilities  
Phase Two

Peekskill City School District  
Peekskill, New York

Consultant

Seal

Consultant

**MOSAIC ASSOCIATES**  
Mosaic Associates Architects  
The Freed Building, 2 Third Street, Suite 440, Troy, NY 12180

Drawing Number :

URIAH HILL ELEMENTARY

APN: 1901.2 Date : 10/02/2020 Drawn by :

**RU D02**



