

SCHEDULE OF DUCTLESS HEAT PUMP SPLIT SYSTEMS													
INDOOR AIR HANDLER INFORMATION						OUTDOOR CONDENSING UNIT INFORMATION							
GENERAL DATA		SUPPLY FAN DATA		COOLING		HEATING		GENERAL INFO.		ELECTRICAL INFORMATION			REMARKS
MARK	MODEL No. ①	CFM	ELECTRIC SERVICE	(MBH)	(MBH)	MARK	MODEL No. ①	V/PH/Hz	TOTAL MCA (AMPS)	TOTAL MOPC (AMPS)			
HP 1	40MBQ809C-3	380	208/1/60	9.0	10.0	CU 1	38MAQ809-3	208/230 /1/60	15	15	REFER TO ②③④⑤⑥⑦		
HP 2						CU 2							
HP 3						CU 3							
HP 4						CU 4							
HP 5						CU 5							

1

AS MANUFACTURED BY "CARRIER".

2

INSTALL PER MANUFACTURERS' RECOMMENDATIONS.

3

PROVIDE INDOOR UNITS WITH OUTDOOR AIR CONNECTION

4

CABINET SHALL HAVE KNOCK-OUT ON SIDE PANEL FOR PROVISIONS FOR OUTDOOR AIR.

5

PROVIDE PROGRAMMABLE THERMOSTAT AND WIRED REMOTE CONTRL.

6

PROVIDE ALL CONTROLS, BMS INTEGRATION, REFRIGERATION SPECIALITIES, SENSORS, CONDENSATE PUMPS, FILTER RACKS AND EXTERNAL VIBRATION ISOLATION.

7

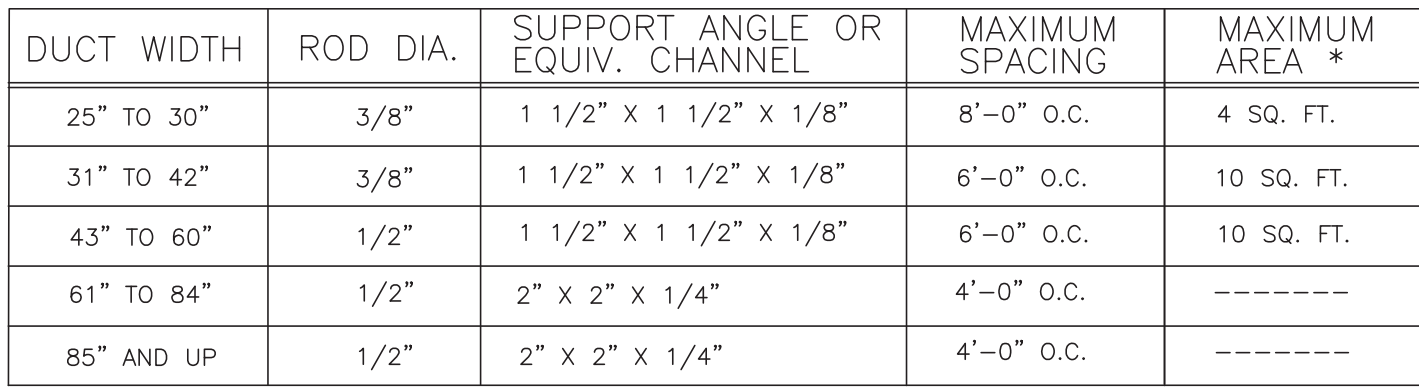
INSERT SCREEN FOR AIR INTAKE.

NOTES

MARK	SERVICE	LOCATION	TYPE	MODEL No. ①	CFM	RPM	ELECTRIC SERVICE	REMARKS
EF 1	PARK OFFICE-1	CEILING	IN-LINE	SP-AP0511W	110	934	115	②③④
EF 2	PARK OFFICE-2							
EF 3	JFK OFFICE-1							
EF 4	JFK OFFICE-2							

N ① AS MANUFACTURED BY "GREENHECK".
 O ② INSTALL PER MANUFACTURER'S RECOMMENDATIONS.
 T ③ PROVIDE MOTION AND CO2 SENSOR.
 E ④ PROVIDE C.U. WITH SNOW/ WIND GUARD AT FAN INTAKE AND DISCONNECT SWITCHES.
 S ⑤ COORDINATE LOCATION OF FENCE ENCLOSURE WITH SPACE REQUIRED TO SERVICE THE CONDENSING UNIT.
 ⑥ PROVIDE WALL CAP WITH BUILT-IN DAMPER

	EXISTING DUCTWORK, EQUIPMENT, ETC. TO REMAIN
	EXISTING DUCTWORK, EQUIPMENT, ETC. TO BE REMOVED
	POINT OF CHANGE IN DUCT SIZE
	NEW DUCTWORK
	MECHANICAL KNOCKOUT (NOM. 1/2" rowspan="2">
	POINT OF CHANGE IN DUCT SIZE
	FURNACE CONNECTION
	NEW DUCTWORK
	POINT OF CHANGE IN DUCT SIZE
	REGISTER/DIFFUSER IDENTIFICATION
	SQUARE DUCT TURN WITH TURNING VANES
	EXISTING 4-WAY CEILING DIFFUSER
	EXISTING CEILING REGISTER
	TYPE SEE SCHEDULE
	NEW 4-WAY CEILING DIFFUSER
	TYPE SEE SCHEDULE
	NEW 3-WAY CEILING DIFFUSER
	TYPE SEE SCHEDULE
	CEILING EXHAUST/RETURN REGISTER
	DUCT MTD. MANUAL AIR VOLUME DAMPER (W/LOCKING DEVICE)
	MOTORIZED AIR VOLUME DAMPER (WITH ACCESS DOOR)
	FD & AD
	FIRE DAMPER (U.L. APPROVED) & ACCESS DOOR
	EXISTING HOT WATER SUPPLY PIPING
	EXISTING HOT WATER RETURN PIPING
	NEW HOT WATER SUPPLY PIPING
	NEW HOT WATER RETURN PIPING
	FLOW DIRECTION WITHIN PIPE
	SHUT OFF VALVE
	EXISTING EXHAUST FAN IDENTIFICATION
	EXISTING CABINET HEATER IDENTIFICATION
	NEW CABINET HEATER IDENTIFICATION
	EXISTING FINNED TUBE RADIATION IDENTIFICATION
	NEW DDC WALL MTD. (5'-2" rowspan="2">
	EXISTING PNEUMATIC THERMOSTAT
	EXISTING DDC SENSOR
	NEW THERMOSTAT
	POINT OF DISCONNECTION
	POINT OF CONNECTION, NEW TO EXISTING
	DOOR UNDERCUT BY C.C.
	LOW DOOR LOUVER BY C.C.
	CUBIC FEET PER MINUTE
	CEILING DIFFUSER
	CEILING REGISTER
	BOTTOM WALL REGISTER
	TOP WALL REGISTER
	FULL SIZE CONNECTION
	ABOVE FINISHED FLOOR
	OUTSIDE AIR INTAKE
	FLEXIBLE CONNECTION
	ACCESS DOOR
	ITEM CONTROLLED WALL MOUNTED (5'-2" rowspan="2">
	SECTION/DETAIL/ELEVATION/PART PLAN NUMBER
	DRAWING NUMBER
	SECTION/ELEVATION IDENTIFICATION
	EXISTING TO REMAIN
	EXISTING TO BE RELOCATED
	REMOVE EXISTING



B DUCT SUPPORT DETAIL
SCALE: N.T.S.

PLUMBING REMOVAL NOTES

REMOVE SINK AS INDICATED, INCLUDING BUT NOT LIMITED TO EQUIPMENT, SPECIALTIES, DRAINS, CONTROLS, HANICERS, BASINS, SUPPORTS, PIPING VALVES, TUBING AND PLUMBING ACCESSORIES THAT ARE NOT INCORPORATED IN THE NEW LAYOUT.

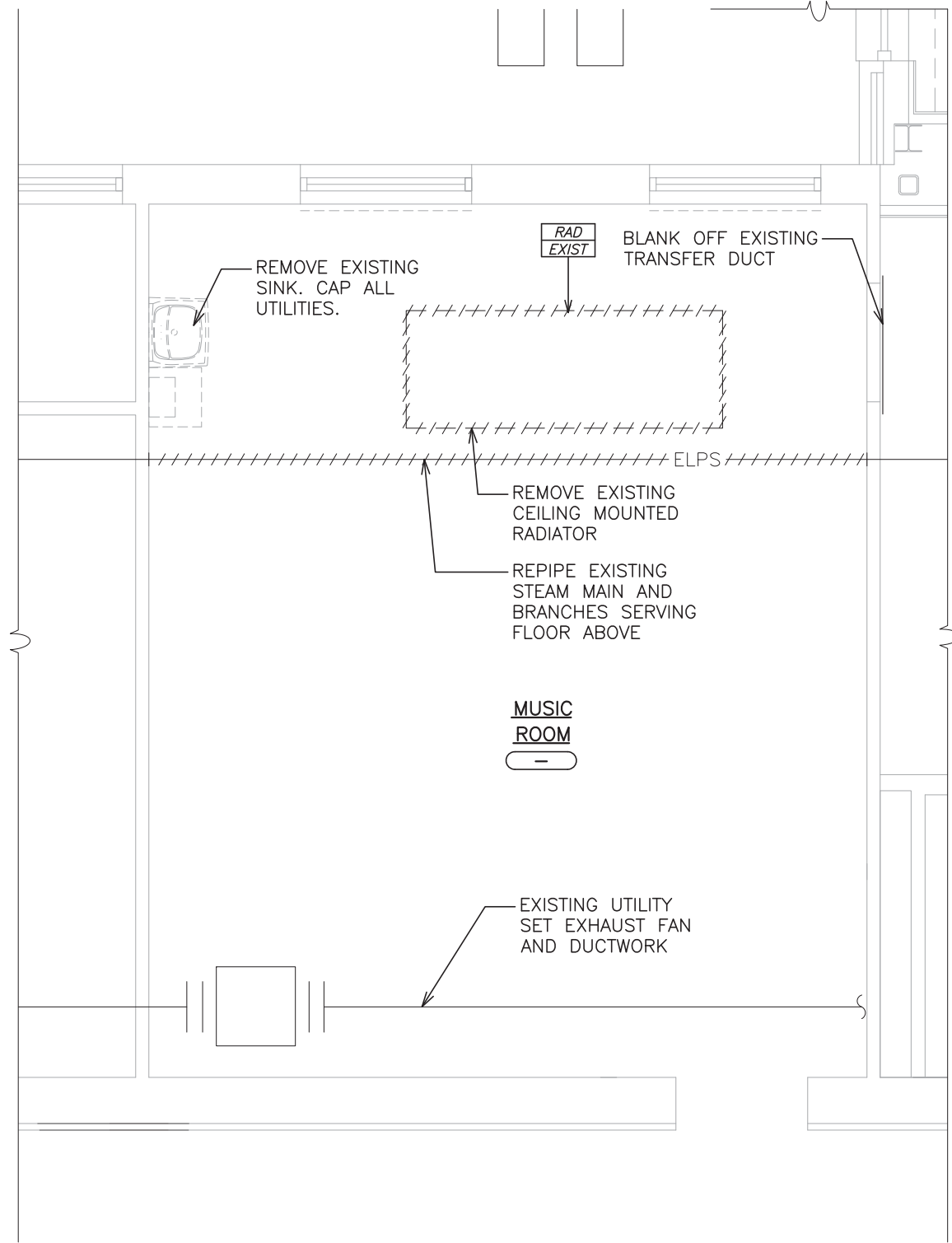
2. WHERE REMOVAL IS INDICATED OR IMPLIED OR NOT INCORPORATED IN THE NEW LAYOUT, THE ITEM ITSELF IS TO BE REMOVED COMPLETELY TOGETHER WITH ALL CONNECTING PIPING, SPECIALTIES, SUPPORTS, CONTROLS, ETC. CONNECTING PIPING IS TO BE REMOVED BACK TO MAIN WHERE THEY ARE TO BE CAPPED OR DISCONNECTED. THIS INCLUDES ALL SANITARY, VENT, WATER, DISCHARGE PIPING. REFER TO DIVISION I OF SPECIFICATION FOR CUTTING AND PATCHING REQUIREMENTS.

3. WHERE EXISTING PIPING ENTERS INACCESSIBLE TRENCHES, TUNNELS, SHAFTS, WALLS AND CEILINGS UNDER THE EXISTING BUILDING, IT SHALL BE CUT BACK AT LEAST 2" INTO SUCH INACCESSIBLE SPACES AND SHALL BE SUITABLY CAPPED AND SEALED BY THE CONTRACTOR.

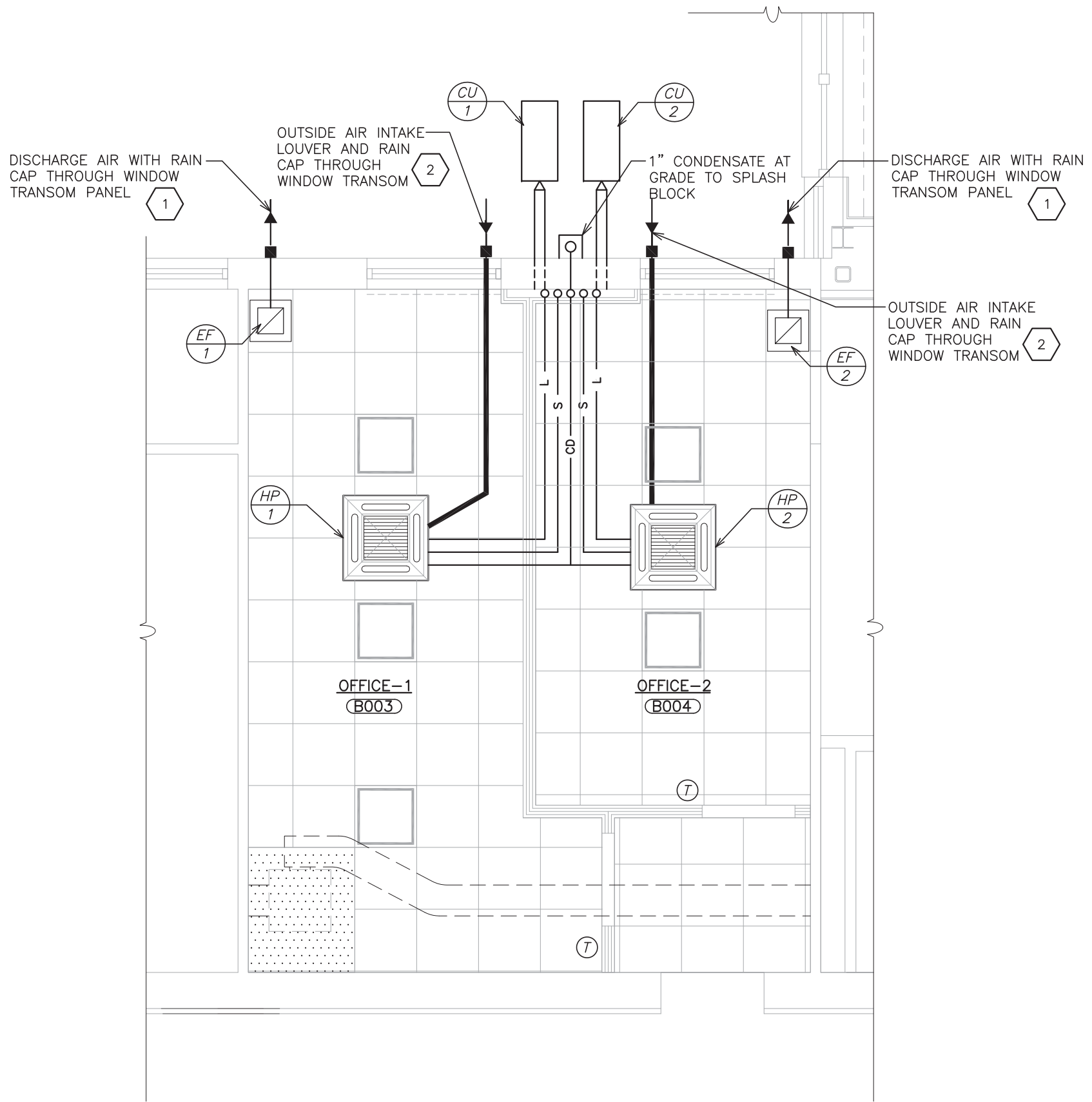
4. THE CONTRACTOR SHALL EXERCISE NORMAL CAUTION TO PREVENT UNNECESSARY CUTTING AND DAMAGE TO THE EXISTING BUILDING. ANY EXCESSIVE DAMAGE AS DETERMINED BY THE OWNER SHALL BE REPAIRED AND PAID FOR BY THE CONTRACTOR CAUSING THE DAMAGE.

5. ALL DEMOLISHED EQUIPMENT ETC. EXCEPT THOSE ITEMS SPECIFICALLY REQUESTED BY THE OWNER SHALL BECOME THE CONTRACTOR'S PROPERTY, SHALL BE REMOVED FROM THE PREMISES, AND DISPOSED OF LEGALLY.

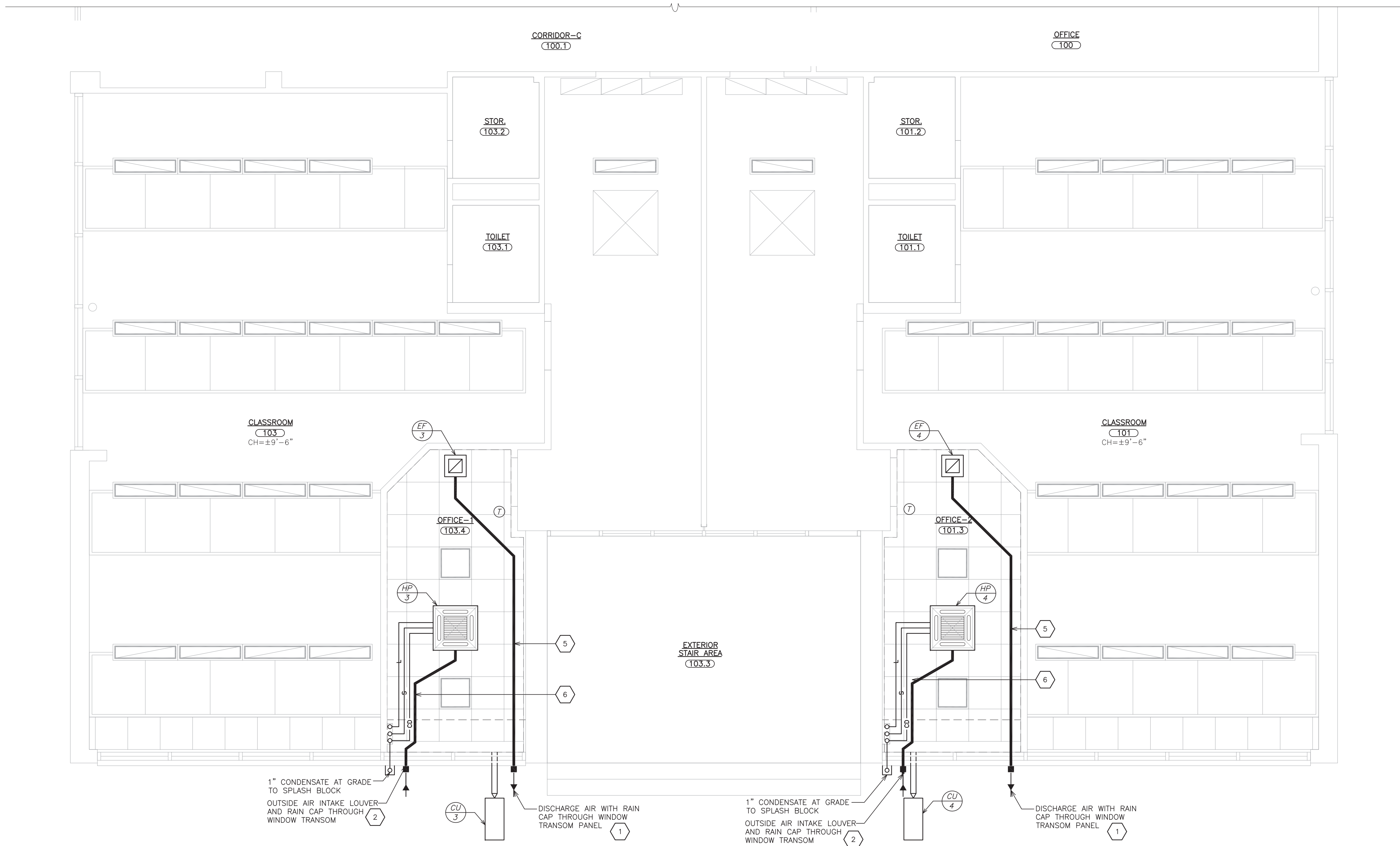
WORK SCOPE NOTES - KEYED	
WS1	MODIFY OPENING AND EXTEND DUCT TO NEW EXHAUST AIR GRILL MOUNTED IN SUSPENDED CEILING AND CENTERED IN TILE. REFER TO ARCHITECTURAL REFLECTED CEILING PLAN AND SPECIFICATIONS.
WS2	MODIFY AND EXTEND EXISTING DUCTWORK FROM DUCT TO NEW REGISTER/DIFFUSER LOCATIONS
WS3	PROVIDE NEW SUPPLY DUCT WORK INCLUDING INSULATION AND 2'X2" DIFFUSERS TO MATCH EXISTING.



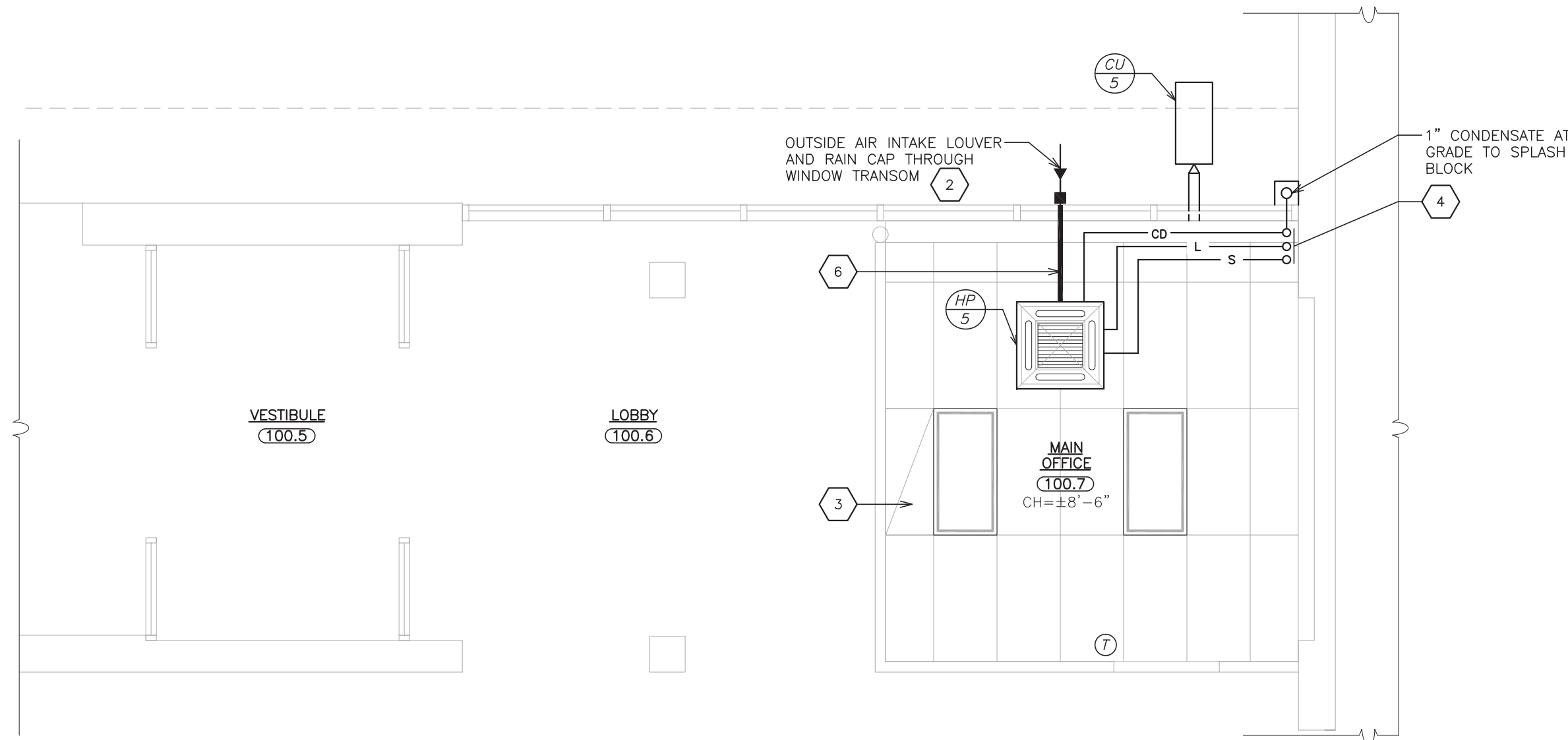
1 PARK AVE. ELEMENTARY SCHOOL
EXISTING/ REMOVAL PLAN
SCALE: 1/4" = 1'-0"



2 PARK AVE. ELEMENTARY SCHOOL
REFLECTED CEILING PLAN
SCALE: 1/4" = 1'-0"



3 JOHN F. KENNEDY PRIMARY SCHOOL
REFLECTED CEILING PLAN
SCALE: 1/4" = 1'-0"



4 JOHN F. KENNEDY PRIMARY SCHOOL
REFLECTED CEILING PLAN
SCALE: 1/4" = 1'-0"



- WORKSCOPE NOTES**
- 1 MAINTAIN MAXIMUM DISTANCE BETWEEN EXHAUST FAN DISCHARGE AND HEAT PUMP AIR INTAKE. INSTALL DISCHARGE GRILLE THROUGH WINDOW TRANSOM. TRANSITION AS REQUIRED FROM FAN TO TRANSOM.
 - 2 INSTALL INTAKE THROUGH EXISTING WINDOW TRANSOM. TRANSITION AS REQUIRED FROM UNIT TO TRANSOM.
 - 3 EXISTING EXHAUST.
 - 4 PROVIDE PVC LINE SET COVER.
 - 5 RUN DUCT AND PIPING BELOW EXISTING CEILING AND ABOVE NEW CEILING. TRANSITION FROM FAN AS REQUIRED. SUPPORT FROM CONCEALED TEE OF CEILING.
 - 6 RUN DUCT AND PIPING BELOW EXISTING CEILING AND ABOVE NEW CEILING. TRANSITION FROM HP AS REQUIRED. SUPPORT FROM CONCEALED TEE OF CEILING.