



Kevin P. Hengst,
Architect

1250 Old River Road Suite 201 Cleveland Ohio 44113-1243 216 586 0440 f 216 325 0535 t

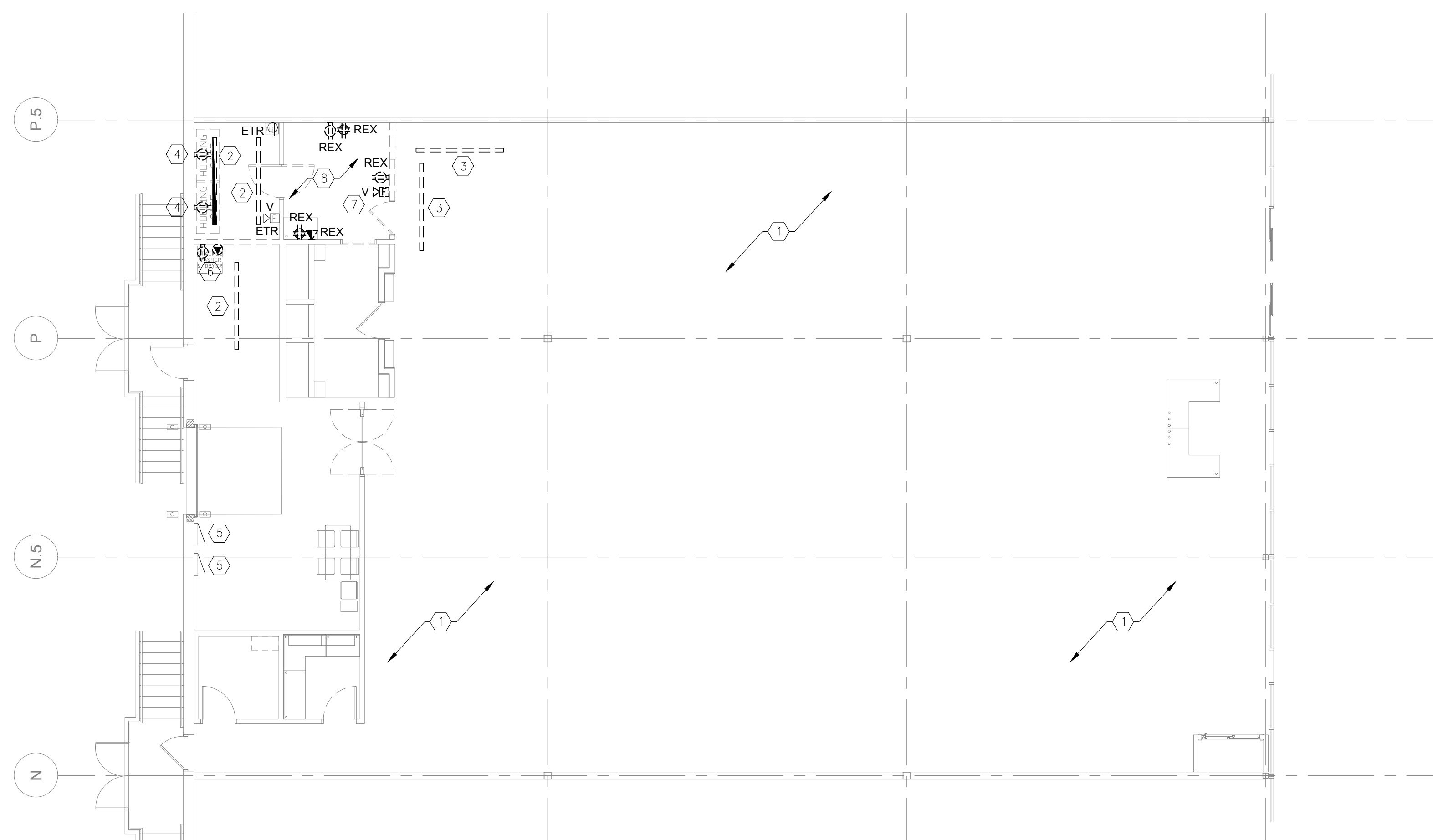
Job No. 21256

PET SUPPLIES PLUS
Store #4175 Stony Point, NY
Interior Renovation

22 Holt Dr. Suite 107,
Stony Point, NY 10980

Electrical Demolition Plan

ED 1.0



	1	2	3	4	5
C	<div><div>CODED NOTES</div><div>#</div><div><div>1.</div><div>ALL EXISTING LIGHTING AND ELECTRICAL DEVICES ARE EXISTING TO REMAIN UNLESS OTHERWISE NOTED. MAINTAIN ALL EXISTING CONNECTIONS AS REQUIRED.</div></div><div><div>2.</div><div>EXISTING LIGHT FIXTURE TO BE REMOVED. PROTECT AND MAINTAIN EXISTING CIRCUIT CONTINUITY AS REQUIRED. FIELD COORDINATE ALL REQUIREMENTS.</div></div><div><div>3.</div><div>REX LIGHT FIXTURE AND ASSOCIATED INTERCONNECTION CIRCUITING. SALVAGE LIGHTING BRANCH CIRCUITING TO THE EXTENT REQUIRED TO SERVE NEW LIGHTING LAYOUT. SALVAGE FIXTURE FOR REINSTALLATION AS FIXTURE TYPE RA'.</div></div><div><div>4.</div><div>EXISTING RECEPTACLE TO BE REMOVED AND RELOCATED. PROTECT AND MAINTAIN EXISTING CIRCUITING FOR EXTENSION TO NEW LOCATION INDICATED ON SHEET E1.0.</div></div><div><div>5.</div><div>EXISTING ELECTRICAL GEAR/PANELS TO REMAIN. PROTECT AND MAINTAIN ALL EXISTING CONNECTIONS AS REQUIRED.</div></div><div><div>6.</div><div>EXISTING WASHER/DRYER TO BE RELOCATED. PROTECT AND MAINTAIN EXISTING DEVICES AND CIRCUITING FOR EXTENSION TO NEW LOCATION INDICATED ON SHEET E1.0.</div></div><div><div>7.</div><div>EXISTING FIRE ALARM DEVICE TO BE RELOCATED. PROTECT AND MAINTAIN EXISTING WIRING FOR EXTENSION TO NEW LOCATION INDICATED ON SHEET E1.0.</div></div><div><div>8.</div><div>EXISTING GROOMING ROOM TO BE DEMOLISHED AND EXPANDED. REMOVE EXISTING DEVICES AS INDICATED. PROTECT AND MAINTAIN CIRCUITING FOR EXTENSION TO NEW DEVICE LOCATION INDICATED ON SHEET E1.0.</div></div></div>				
B					
A	<p>The plan shows a building footprint with several rooms and corridors. Stairs are located on the left side. Electrical symbols include REX (Receptacle), ETR (Electrical Transformer), V (Vent), and P (Panel). Callouts 1 through 8 point to specific areas: 1 points to a large open area; 2 points to a room near the stairs; 3 points to a room near the top right; 4 points to a room near the top left; 5 points to a room near the bottom left; 6 points to a room near the bottom center; 7 points to a room near the bottom right; 8 points to a room near the top center. Arrows indicate the direction of extension or relocation for items 1, 2, 3, 4, 5, 6, 7, and 8.</p>				
	01	ELECTRICAL DEMOLITION PLAN			SCALE: 1/8" = 1'-0"