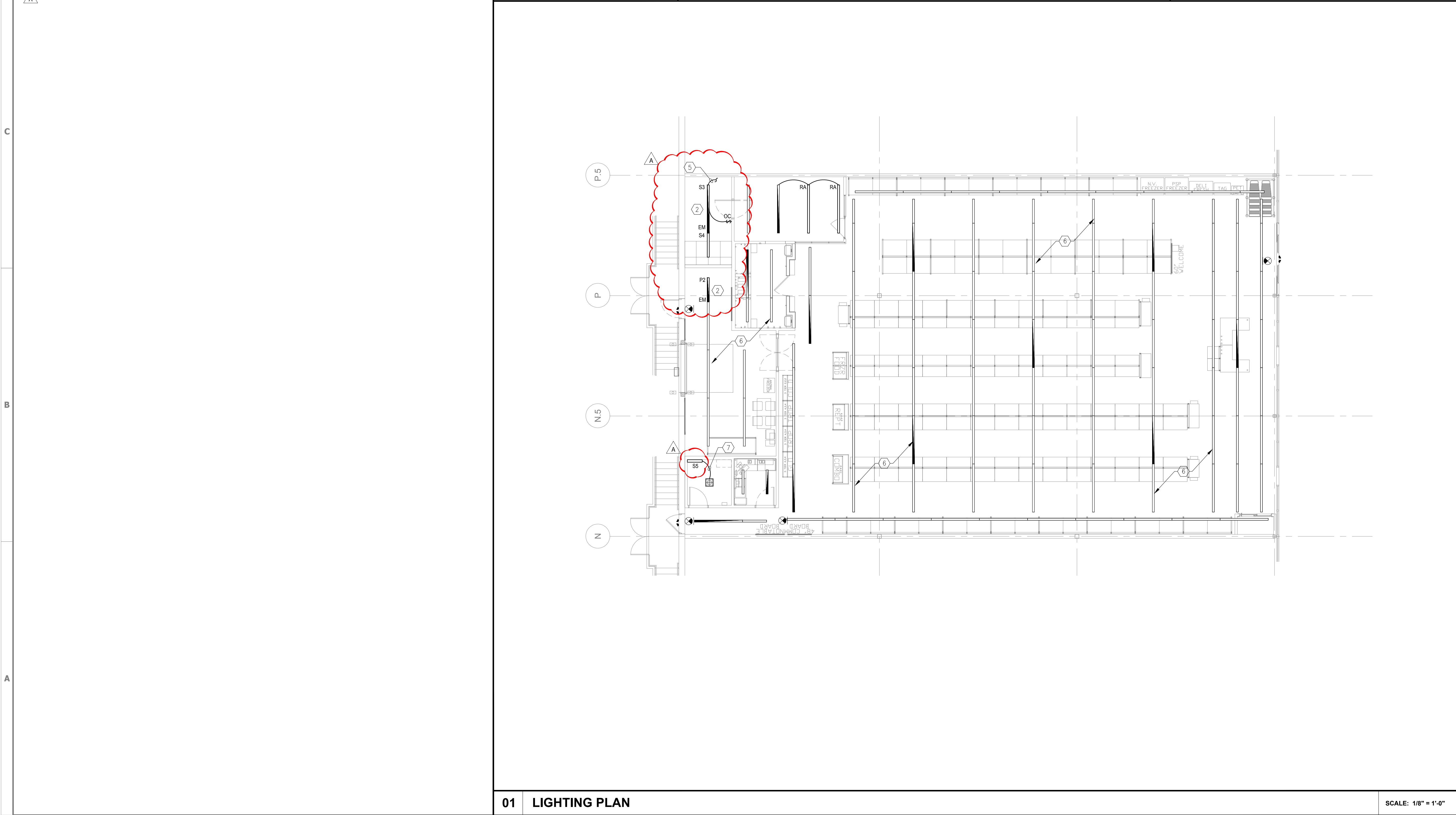


© Kevin P. Hengst, Architect. All rights reserved. No part of this document may be reproduced, stored in a retrieval system, or transmitted in any form or by any means, electronic, mechanical, photocopying, recording, or by any information storage and retrieval system, without prior written permission from Kevin P. Hengst, Architect. These plans are not to be reproduced, changed or copied without the express written permission of Kevin P. Hengst, Architect. THE ENGINEER OR ARCHITECT DISCLAIMS RESPONSIBILITY FOR THESE PLANS AND SPECIFICATIONS IF THEY ARE ALTERED OR USED IN WHOLE OR IN PART AT ANY OTHER SITE OR PROJECT THAN THE ONE FOR WHICH THEY WERE SPECIFICALLY PREPARED.

LIGHTING FIXTURE SCHEDULE								
TYPE	DESCRIPTION	MOUNTING	LAMPS	FIXTURE VA	WATTAGE	VOLTS	MANUFACTURER	CATALOG NO.
RA	4" RELOCATED STRIP FIXTURE	SURFACE	EXISTING	60	60	120-277	EXISTING	EXISTING
P2-EM	4" LED STRIP FIXTURE, ONE (1) MVOLT LED DRIVER, EM BATTERY BACKUP. COORDINATE WITH SHEET A3.0 AND INTERIOR ELEVATIONS FOR MOUNTING HEIGHT.	AIRCRAFT CABLE	LED	41.5	35.3	120-277	LITHONIA	CSS L48 4000LM MVOLT 40K 80CRI with ILB CP10 B M20
S3-EM	8" WET LOCATION VAPORTIGHT ACRYLIC LENS, ONE (1) MVOLT LED DRIVER, EM BATTERY BACKUP. COORDINATE WITH SHEET A3.0 AND INTERIOR ELEVATIONS FOR MOUNTING HEIGHT.	SURFACE MOUNT	LED	88.8	75.5	120-277	LITHONIA	FEM L96 12000LM IMAFL MD MVOLT GZ10 40K 80CRI E10WMCP
S4	4" WET LOCATION VAPORTIGHT ACRYLIC LENS, ONE (1) MVOLT LED DRIVER. COORDINATE WITH SHEET A3.0 AND INTERIOR ELEVATIONS FOR MOUNTING HEIGHT.	SURFACE MOUNT	LED	59.4	50.5	120-277	LITHONIA	FEM L48 8000LM IMAFL MD MVOLT GZ10 40K 80CRI
TWIST CLIP WITH WING NUT FOR USE WITH S-TYPE FIXTURES							ERICO	4G16
S5	24" LED BATHROOM VANITY LIGHT	WALL MOUNT	LED	35.3	30	120-277	MAXLITE	ML8LARBN30830

LIGHTING FIXTURE SCHEDULE GENERAL NOTES	
A. REFER TO SPECIFICATIONS FOR FURTHER INFORMATION.	K. FIELD VERIFY CEILING TYPES AND DETERMINE PROPER MOUNTING HARDWARE PRIOR TO ORDERING FIXTURES.
B. ALL EXIT SIGNS TO HAVE RED LETTERS WITH 6" x 3/4" LETTERS AND 90 MINUTES OF BATTERY BACKUP.	L. ALL EXIT SIGNS, NIGHTLIGHTS, AND EMERGENCY EGRESS LIGHTING FIXTURES SHALL BE WIRED AHEAD OF LOCAL SWITCHES TO REMAIN ENERGIZED.
C. CONFIRM ALL FIXTURE VOLTAGES WITH CIRCUITING ON PLAN. PROVIDE UNIVERSAL DRIVER IF AVAILABLE AND WIRED FOR 120V OPERATION FROM FACTORY IF NOT INDICATED OTHERWISE ON THE LIGHTING FIXTURE SCHEDULE/OR LIGHTING FLOOR PLANS.	M. PROVIDE LOCAL DISCONNECTING MEANS FOR INDOOR LED LUMINAIRES WHICH CONTAIN DRIVERS. USE DOUBLE-ENDED LAMPS, AND BE SERVICED IN PLACE PER 2011 NEC 410.130 (G).
D. MANUFACTURER TO VERIFY FIXTURE CATALOG NUMBER WITH THE DESCRIPTION OF THE FIXTURE AND CIRCUITING ON THE PLANS.	N. REFER TO SHEET A3.0 FOR ADDITIONAL CEILING INFORMATION.
E. WHERE 'EM' IS SHOWN ADJACENT TO A LIGHT FIXTURE ON THE LIGHTING PLAN, IT INDICATES THAT THE FIXTURE IS TO HAVE A FACTORY INSTALLED LED EMERGENCY BATTERY DRIVER. DRIVER SHALL BE IOTA #ILB-CP10.	O. LIGHTS IN THE GROOMING, BATHING, HOLDING, PUBLIC PET WASH AREAS AND THE AQUARIUMS ARE TO BE ROUTED THROUGH THE LIGHTING CONTRACTOR. SEE SHEET E3.0 FOR DETAILS. THESE LIGHTS ARE TO REMAIN ON DURING BUSINESS HOURS. COORDINATE ALL PROGRAMMING WITH PET SUPPLIES PLUS.
F. 'NL' INDICATES THAT FIXTURE IS CONNECTED TO AN UNSWITCHED CIRCUIT FOR NIGHT-LIGHT ILLUMINATION.	P. NOT ALL FIXTURES MAY BE USED.
G. REFER TO ARCHITECTURAL SET FOR RESPONSIBILITY SCHEDULE FOR LIGHTING.	Q. CEILING, LIGHTING, ETC. SUPPORTING SYSTEMS SHALL ATTACH TO STRUCTURAL MEMBERS ONLY, ARE NOT PERMITTED TO BE ATTACHED TO ROOF DECKING, BRIDGING OR WIND BRACING, AND SHALL COMPLY WITH SEISMIC ZONING BRACING REQUIREMENTS. DESIGN OF THE SUPPORTING SYSTEM IS TO FOLLOW THE MANUFACTURERS INSTALLATION REQUIREMENTS AND IS THE CONTRACTORS RESPONSIBILITY.
H. REFER TO MANUFACTURER'S RECOMMENDATIONS FOR PROPER INSTALLATION OF SUSPENDED OR SURFACE MOUNTED LED FIXTURES.	R. ANY EXISTING CEILING ITEMS THAT ARE TO REMAIN IN OPERATION (FOR EXAMPLE, EXISTING GENERAL PIPING, EXISTING CONDUITS, OR ANY OTHER EXISTING BUILDING SYSTEM ELEMENTS ARE TO BE RAISED AS REQUIRED FOR LIGHT FIXTURE INSTALLATION. G.C. TO COORDINATE AS REQUIRED.
I. REFER TO ARCHITECTURAL DETAILS REGARDING CEILING CONSTRUCTION (AS APPLICABLE) FOR SPECIFIC DIRECTIVES ASSOCIATED WITH INSTALLATION/SUPPORT OF NEW LIGHTING FIXTURES IDENTIFIED THEREIN.	
J. PROVIDE SUPPORT WIRES FROM STRUCTURE FROM A MINIMUM OF TWO (2) OPPOSING CORNERS OF EACH SUSPENDED FIXTURE OR STRIP LED FIXTURES BEING SUPPORTED BY THE STRUCTURE AND BEING ALIGNED WITH T-GRID WITH MANUFACTURER-PROVIDED SURFACE MOUNT HANGER.	

CODED NOTES	
1. NOT USED.	
2. ALL EMERGENCY LIGHTING UNITS AND INTERIOR LED LIGHT FIXTURES (LOCATED OUTSIDE OF SALES AREA) PROVIDED WITH EMERGENCY BATTERY BALLASTS FOR EMERGENCY EGRESS LIGHTING SHALL BE FED FROM THE LIGHTING CIRCUIT WITHIN ROOM AND CONNECTED AHEAD OF ALL LOCAL CONTROLS.	
3. NOT USED.	
4. NOT USED.	
5. CONNECT TO EXISTING 120V LIGHTING CIRCUIT SERVING THIS ROOM/AREA. FIELD VERIFY THAT EXISTING CIRCUIT HAS ADEQUATE CAPACITY TO HANDLE LOAD. DO NOT EXCEED 16A ON A 20A CIRCUIT.	
6. ALL EMERGENCY LIGHTING AND EXIT SIGNS IN THIS AREA ARE EXISTING TO REMAIN.	
7. CIRCUIT AND CONTROL NEW VANITY LIGHT WITH EXISTING RESTROOM LIGHTING.	
NOTE: NOT ALL CODED NOTES ARE USED ON THE PLAN	
GENERAL NOTES	
1. ALL SWITCHES TO BE MOUNTED AT 44" AFF UNLESS OTHERWISE NOTED.	



Date  
05/28/2021  
08/06/2021

Issue  
Bid Permit Set  
Addendum A

LICENSED ARCHITECT  
KEVIN HENGST  
025652  
STATE OF NEW YORK

Kevin P. Hengst,  
Architect

1250 Old River Road  
Suite 201  
Cleveland Ohio 44113-1243  
216 586 0440 f  
216 325 0535 t

Job No. 21256

PET SUPPLIES PLUS

Store #4175 Stony Point, NY

Interior Renovation

22 Holt Dr. Suite 107,  
Stony Point, NY 10980

Lighting Plan

E 2.0