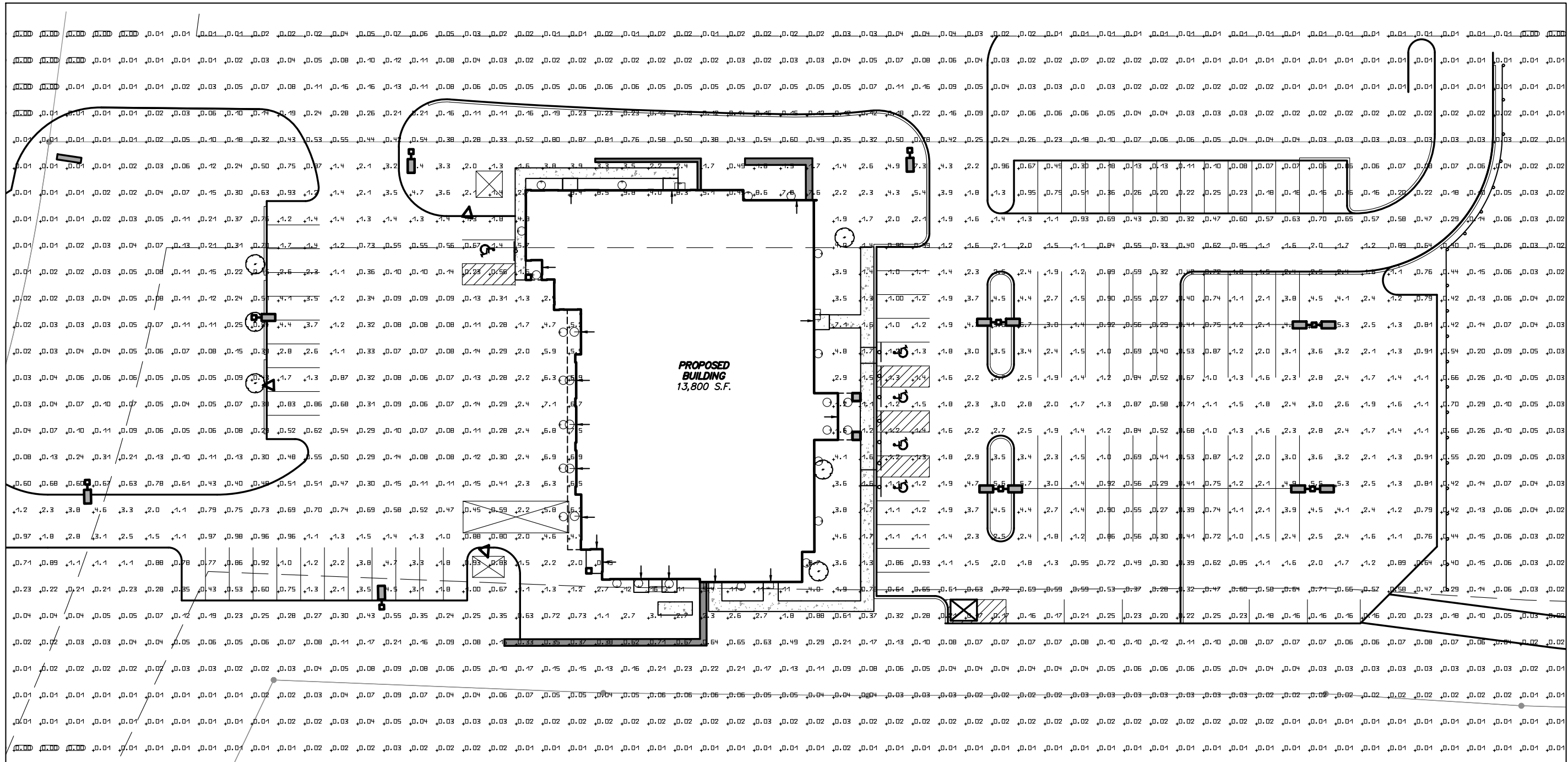
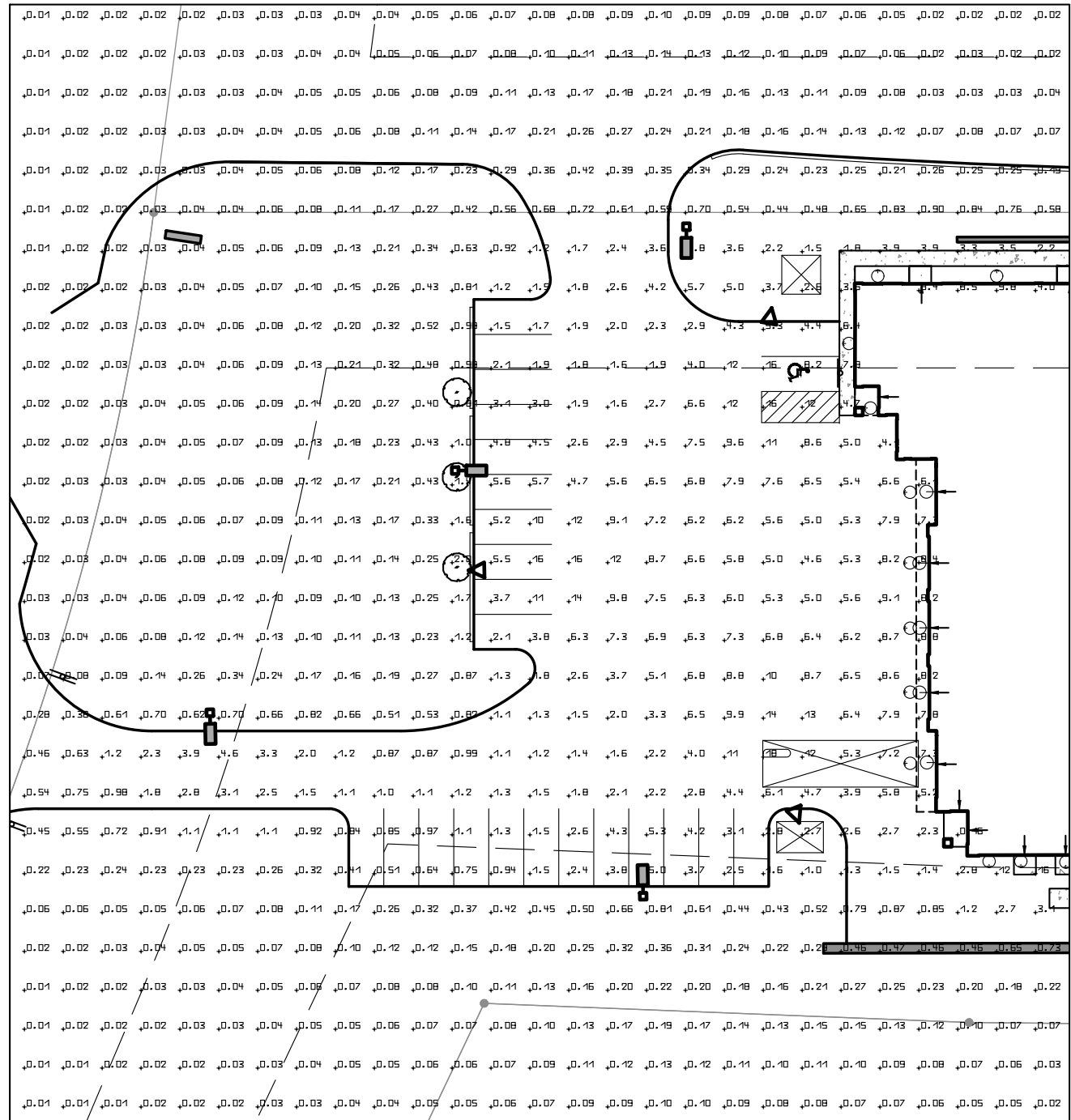
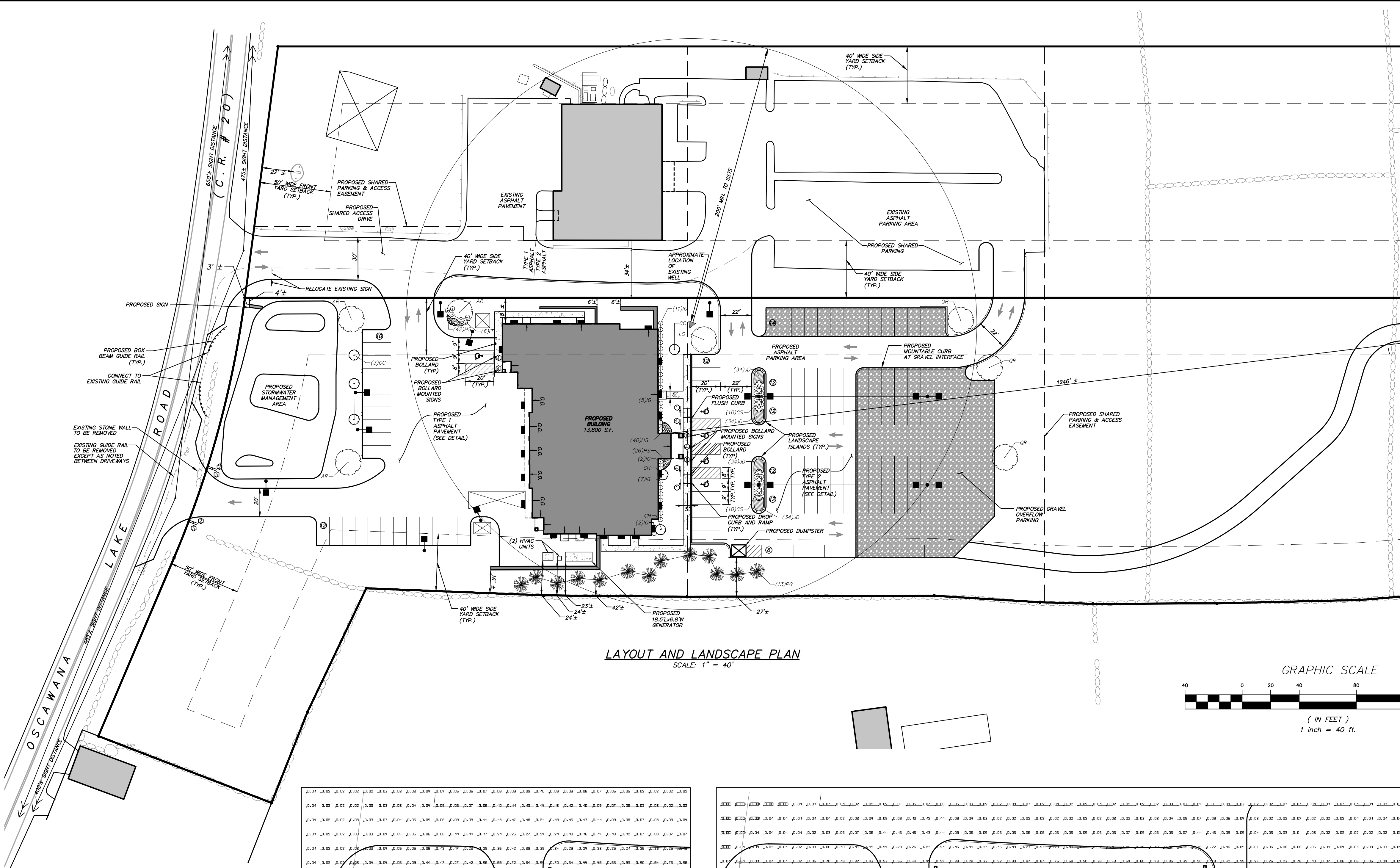
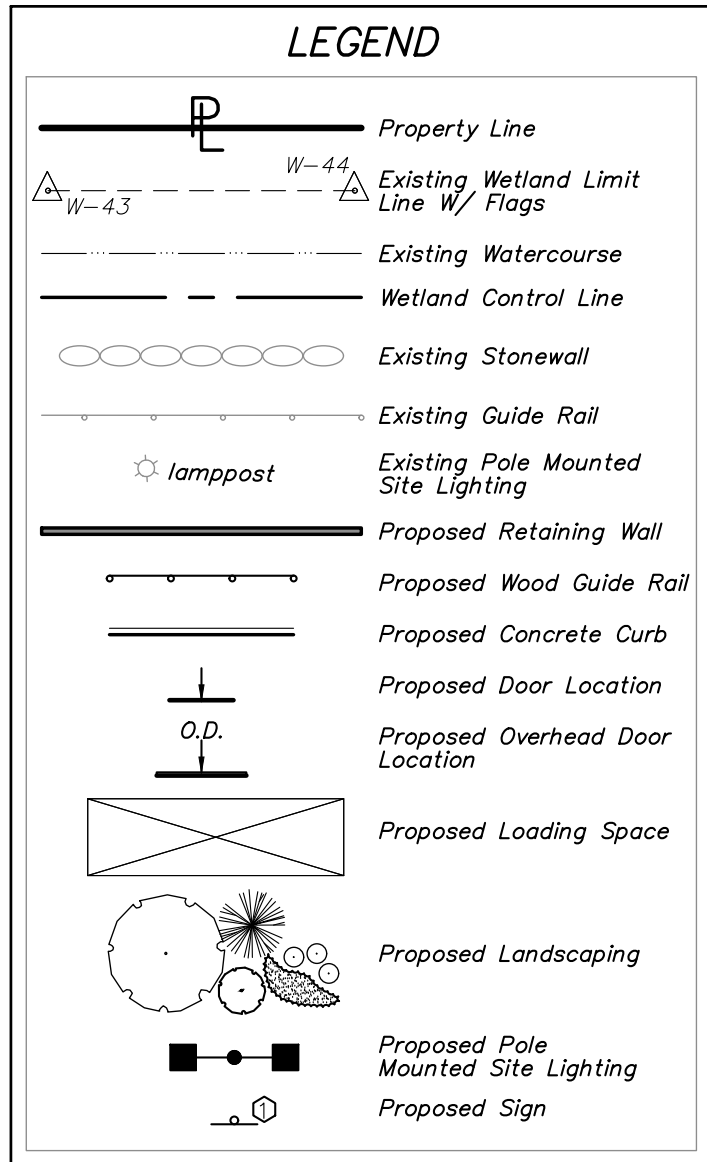


ALTERATION OF THIS DOCUMENT, UNLESS UNDER THE DIRECTION OF A LICENSED PROFESSIONAL ENGINEER, IS A VIOLATION OF SECTION 7209 OF ARTICLE 145 OF THE EDUCATION LAW.



**Lighting Note:**

- Lighting information shown for reference only. See electrical plans for installation details.
- Parking Lot Lights shall be operated by photo cell and motion sensor.

**General Notes:**

- Property line, topography, existing conditions and wetland flag locations shown hereon are based upon Boundary & Topography Map of Property prepared by Baxter Land Surveying, P.C., Mahopac, New York, dated November 5, 2007, last revised June 29, 2016. Wetlands were delineated by Steve Marino of Tim Miller Associates on May 15, 2016.
- Existing tree locations shown hereon are based upon Tree Survey prepared by Baxter Land Surveying, P.C., Mahopac, New York, dated November 4, 2009.

**SCHEMATIC PLANT LIST**

QUANTITY	SYMBOL	BOTANICAL/COMMON NAME	SIZE	ROOT
13	PG	<b>EVERGREEN TREES</b>		
		Picea glauca / White Spruce	6' - 8' HT.	B & B
3	AR	<b>SHADE TREES</b>		
		Acer rubrum 'October Glory' / October Glory Red Maple	2-2 1/2" CAL.	B & B
		Liquidambar styraciflua / Sweetgum	2-2 1/2" CAL.	B & B
1	LS	Quercus rubra / Northern Red Oak	2-2 1/2" CAL.	B & B
3	QR			
4	CC	<b>FLOWERING/SPECIMEN TREES</b>		
		Cercis canadensis / Eastern Redbud	6' - 8' HT.	B & B
		Crataegus crus-galli / Cockspur Hawthorn	6' - 8' HT.	B & B
2	CM			
20	CS	<b>SHRUBS &amp; GROUND COVERS</b>		
		Cornus sericea (stolonifera) / Red-osier Dogwood	2' - 3' HT.	#3 CONT.
		Hemerocallis "Stella D'Oro" / Miniature Daylilies	#1 CONT.	CONT.
		Ilex glabra compacta / Compact Inkberry	2' - 3' HT.	#5 CONT.
		Itea virginica / Henry's Garnet Itlea	18"-24" HT.	#3 CONT.
		Juniperus davurica 'Parsoni' / Parson's Juniper	15"-18" SPR.	#2 CONT.

**LUMINAIRE SCHEDULE**

SYMBOL	CAT. NO.	DESCRIPTION	LAMP	LUMENS	WATTS	MOUNTING/HT	QTY
Q	LUMCA-CPL0427-18-LED07-42-40K	WALL MOUNTED LIGHT FIXTURE OVER GARAGE DOOR	LED	3100	42	WALL MOUNT 16"-0"	5
EX-A	L3-47-120-MA-CFS1						
□	BROWNLEE-7047-C17LED-40K	EXTERIOR WALL MOUNTED LIGHT FIXTURE	LED	1829	17	WALL MOUNT 8'-4"	5
○	BROWNLEE-7047-C24LED-40K	EXTERIOR WALL MOUNTED LIGHT FIXTURE	LED	2558	24	WALL MOUNT 8'-4"	18
EX-C							
○	WILLIAMS-L80-L30C/835-CS	6" ROUND RECESSED DOWNLIGHT	LED	6400	52	CEILING RECESSED	6
EX-D	DECO-D826-LED-320-40-UNV-LP-55-LYM-BL	POLE MOUNTED FLOOD LIGHT W/ YOKE MOUNT	LED	38536	320	25'	2
□	LUMCA-OL30-36LED07-40K-L3-120	POLE MOUNTED PARKING LOT FIXTURE	LED	8400	80	*25' IN FRONT YARD *20' IN REAR YARD	5
□	LUMCA-OL30-36LED07-40K-L3-120	POLE MOUNTED PARKING LOT FIXTURE	LED	8400	80	*25' IN FRONT YARD *20' IN REAR YARD	4

**GENERAL PLANTING NOTES:**

- All proposed planting beds to receive a 12" min. depth of topsoil. Soil amendments and fertilizer application rates shall be determined based on specific testing of topsoil material.
- Any new soils added will be amended as required by results of soil testing and placed using a method that will not cause compaction.
- All plant material to be nursery grown.
- Plants shall conform with ANSI Z60.1 American Standard for Nursery Stock in all ways including dimensions.
- Plant material shall be taken from healthy nursery stock.
- All plants shall be grown under climate conditions similar to those in the locality of the project.
- Plants shall be planted in all locations designed on the plan or as staked in the field by the Landscape Architect.
- The location and layout of landscape plants shown on the site plan shall take precedence in any discrepancies between the quantities of plants shown on the plans and the quantity of plants in the Plant List.
- Provide a 3" layer of shredded bark mulch (or as specified) over entire watering saucer at all tree pits or over entire planting bed. Do not place mulch within 3" of tree or shrub trunks.
- All landscape plantings shall be maintained in a healthy condition at all times. Any dead or diseased plants shall immediately be replaced "in kind" by the contractor (during warranty period) or project owner.

**GENERAL SITE SEEDING NOTES:**

- All proposed seeded areas to receive 4" min. depth of topsoil. Soil amendments and fertilizer application rates shall be determined based on specific testing of topsoil material.
- Upon final grading and placement of topsoil and any required soil amendments, areas to receive permanent vegetation cover in combination with suitable mulch as follows:
  - select seed mixture per drawings and seeding notes.
  - fertilizer applied at the manufacturer's recommended rate using Lesco 10-0-18 (no phosphorus) fertilizer or equivalent.
  - mulch: soft hay or small grain straw applied at a rate of 90 lbs./1000 s.f. or 2 tons/acre, to be applied and anchored according to New York State Standards and Specifications for Erosion and Sediment Control, August 2005.
  - if the season prevents the establishment of a permanent vegetation cover, the disturbed areas will be mulched with straw or equivalent.
- The seed mixes as specified on these drawings are as follows:
  - A. Seed Mix for lawn areas at a rate of 100 lbs. per acre:
    - Kentucky Bluegrass 50%
    - Creeping Red Fescue 40%
    - Perennial Ryegrass 20%
    - Annual Ryegrass 20%
  - B. Seed Mix for meadow areas at a rate of 23 lbs. per acre:
    - New England Wildflower Mix from New England Wetland Plants, Inc. of Amherst, MA.

11	1-27-21	REVISED PER PCDFH COMMENTS	MEU
10	12-7-20	REVISED PER TOWN & PCDFH COMMENTS	JWM
9	8-13-20	ISSUED FOR BID	JWM
8	2-18-20	REVISED PER TOWN COMMENTS	GM
7	1-21-20	REVISED PER TOWN COMMENTS	GM
6	1-8-20	REVISED FOR ZBA SUBMISSION	GM
5	11-6-19	REVISED FOR ZBA SUBMISSION	GM
4	9-13-19	REVISED PER TOWN COMMENTS	MEU
3	07-29-19	REVISED FOR PLANNING BOARD SUBMISSION	KAM
2	02-24-17	REVISED FOR COORDINATED REVIEW	SJC
1	11-30-16	REVISED FOR TEAM REVIEW	MEU
NO.	DATE	REVISION	BY



3 Garrett Place  
Carmel, NY 10512  
(845) 225-9690  
(845) 225-9717 fax  
www.insite-eng.com

PROJECT:  
**PUTNAM VALLEY FIRE STATION #1  
AND AMENDED SITE PLAN FOR  
PUTNAM VALLEY AMBULANCE CORPS**

DRAWING:

**LAYOUT AND LANDSCAPING PLAN**

PROJECT NUMBER	09105.100	PROJECT MANAGER	J.J.C.	DRAWING NO.	SHEET
DATE	11-20-09	DRAWN BY	E.J.K.	SP-1	2
SCALE	1" = 40'	CHECKED BY	E.M.S.		