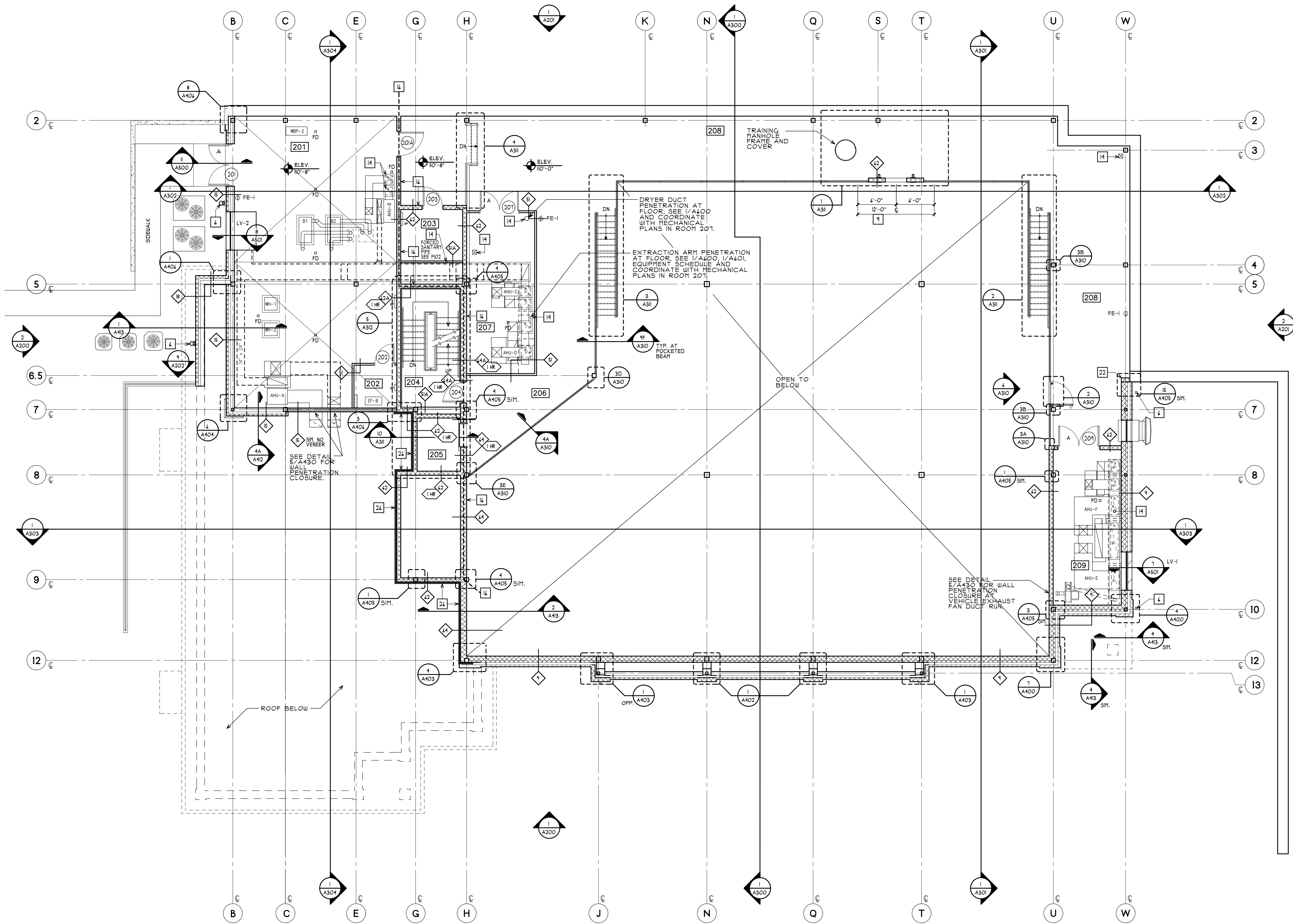
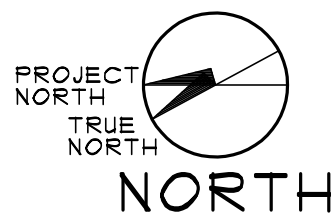


DWG ID#: S-V DrivePutnam Valley NPV_A100



1 2nd FLOOR PLAN
A101 SCALE: 1/8" = 1'-0"



GENERAL NOTES

1. ALL PLAN DIMENSIONS ARE NOMINAL U.O.N.
2. DIMENSIONS ARE TO FACE OF MASONRY OR FACE OF FRAMING, NOT TO FACE OF FURRING.
3. FIRST FLOOR REFERENCE ELEVATION 419.0' = 100'-0".
2ND/MEZZANINE FLOOR REFERENCE ELEVATION 489.0' = 10'-0".
MECH./ELEC. FLOOR REFERENCE ELEVATION 489.44' = 10'-8".
THIRD FLOOR REFERENCE ELEVATION 499.0' = 120'-0".
4. TYPICAL DIMENSION AT HINGE SIDE OF INTERIOR DOOR UNLESS OTHERWISE NOTED.
5. ALL PENETRATIONS THROUGH A RATED ASSEMBLY ARE TO BE PROPERLY FIRE STOPPED. SEE FIRE STOPPING SPECIFICATION.
6. A = ACTIVE DOOR LEAF.
7. IN ALL LAVATORIES, ROOMS WITHOUT DROP CEILINGS AND IN ALL ROOMS OR PARTITIONS WITH ACOUSTICAL INSULATION, WALLS ARE TO EXTEND TO UNDERSIDE OF STRUCTURE.
8. SEE ALSO 1/4" SCALE PLANS FOR ADDITIONAL WALL TYPE AND DIMENSION INFORMATION.
9. SEE ALSO ELEVATIONS FOR CONTROL JOINTS (C/J) IN C.M.U.
10. ALL SHOWER STALLS TO HAVE 5/8" FIBERGLASS FACED G.W.B. AT TILED WALLS.
11. PROVIDE METAL STUD BLOCKING BETWEEN METAL STUD FRAMING FOR WALL MOUNTED OVERHEAD CABINETS AND SHELVING. COORDINATE WITH INSTALLER. SEE A100'S.
12. SEE A100 FOR FFIE DESIGNATIONS, EQUIPMENT PLACEMENT, DIMENSIONS AND NOTES.
13. SEE 1001, 1011 & 1021 FOR DIMENSION PLANS.
14. SEE 10/A430 FOR TYPICAL INTERIOR WALL CONNECTION DETAILS.
15. SEE 4 & 1/A430 FOR TYPICAL FLOOR AND WALL PENETRATION CLOSURES.

2nd FLOOR ROOM LEGEND

NO.	NAME	NO.	NAME
201	BOILER/ELEC. ROOM	204	MEZZANINE
202	ELEVATOR MACHINE ROOM	205	MECHANICAL 1
203	SERVER	208	MEZZANINE
204	STAR	209	MECHANICAL 2
205	ELEVATOR		

KEYNOTE LEGEND

- 1 GUARDIAN FALL PROTECTION (CONCRETE SWIVEL ANCHOR #00242, GALVANIZED 5.5" LADDER TIE OFF, 12" ABOVE FINISH SLAB, FILL SOLID W/ 3000 P.S.I. CONCRETE FIRST TWO BLOCK, ALIGN W/ TRAINING WINDOW CENTER LINE.
- 2 ALIGN ENDS OF TRENCH DRAINS/CATCH BASINS
- 2A IN LINE CATCH BASIN
- 3 SOUND ATTENUATION BLANKETS IN WALL FRAMING FROM FLOOR TO UNDERSIDE OF STRUCTURE, G.W.B. TO EXTEND TO UNDERSIDE OF STRUCTURE, FILL VOIDS AT UNDERSIDE OF STRUCTURE PER DETAILS.
- 4 4" HIGH CONCRETE HOUSEKEEPING PAD COORDINATE SIZE OF PAD WITH EQUIPMENT TO BE PLACED ATOP PAD WITH MANUFACTURERS REQUIREMENTS. COORDINATE LOCATION WITH ALL TRADES. SEE DIMENSION PLANS.
- 5 EXTRACTOR SLAB, COORDINATE SIZE OF PAD WITH EQUIPMENT TO BE PLACED ATOP PAD WITH MANUFACTURERS REQUIREMENTS. COORDINATE LOCATION WITH ALL TRADES. SEE STRUCTURAL DRAWINGS FOR EXTRACTOR SLAB DETAILS.
- 6 DOWNSPOUT TO STORM. SEE ROOF PLAN, ELEVATIONS & CIVIL DRAWINGS.
- 7 DISPLAY CASE - SEE DETAIL 9/A430
- 8 WATER HOSE REEL HIGH INSTALLATION
- 9 KEEP THIS WALL AREA CLEAR FROM FIXED OBJECTS THAT COULD INTERFERE WITH THE LADDER EVOLUTION TRAINING WINDOW, SUCH AS SWITCHES/THERMOSTATS, LIGHT FIXTURES, ETC. COORDINATE WITH ALL TRADES.
- 10 LOUVER, SEE 1/A302 AND MECHANICAL DRAWINGS
- 11 AIR HOSE REEL SEE A100'S, 3/A431 & PLUMBING DRAWINGS.
- 12 TRUCK FILL - SEE PLUMBING DWGS & 3/A430
- 13 COMPRESSED AIR TAP, WALL MOUNTED SEE PLUMBING DRAWINGS
- 14 FLOOR PENETRATION FOR DUCTWORK/PIPING ETC. COORDINATE SIZE OF OPENING WITH APPROPRIATE DRAWINGS AND DETAIL 4/A430. SEE STRUCTURAL DRAWINGS FOR ADDITIONAL INFORMATION.
- 15 FIRE DEPARTMENT CONNECTION. SEE DETAIL 10/A304 & FIRE PROTECTION DRAWINGS.
- 16 THE WALL BETWEEN THE APPARATUS BAY AND THE BALANCE OF THE BUILDING IS TO BE AS AIRTIGHT AS POSSIBLE. ACCORDINGLY, ALL CONTRACTORS ARE TO MAKE ALL OF THEIR PENETRATIONS OF THIS WALL IN ACCORDANCE WITH MAXIMUM OPENING CRITERIA SET FORTH IN OM000 AND SEAL AS REQUIRED.
- 17 20" DOOR SWITCH PANEL. SEE SHEET A432. CENTER IN WALL, TOP OF PANEL AT 40" A.F.F.
- 18 WALL MOUNTED SHOWER SYSTEM. SEE 11/A411 AND PLUMBING DRAWINGS.
- 19 STEEL BOLLARD, SEE STRUCTURAL DWGS
- 20 DRYING RACK. SEE DETAIL 4/A430
- 21 KEEP THIS CEILING AREA CLEAR FROM FIXED OBJECTS THAT COULD INTERFERE WITH THE CONFINED SPACE EXTRACTION TRAINING OPENING, SUCH AS LIGHT FIXTURES, SPRINKLER LINES, DUCTWORK, ETC. COORDINATE WITH ALL TRADES.
- 22 ROUND OFF VERTICAL EDGE OF C.M.U. AT CORNER TO A MINIMUM OF 1/2" RADIUS.
- 23 FIRE ALARM PANEL. SEE FIRE PROTECTION DRAWINGS
- 24 4" DIA. S.S. SLEEVE IN C.M.U. FLUSH WITH EACH FACE OF WALL, LEASE ALL EDGES FOR HOUSING SCBA COMPRESSOR LINES FROM ROOM 108 TO 109. COORDINATE LOCATION WITH OWNER AND SCBA EQUIPMENT VENDOR RECOMMENDATIONS. PROVIDE COMPRESSIBLE FILLER AT INSIDE OF SLEEVE AT EACH END AROUND COMPRESSOR LINE RUNS, ENSURE CLEAN NEAT APPEARANCE AND MUST BE FLUSH WITH FACE OF WALLS. SEE 1/A300
- 25 COAT RACK AT 48" MAX TO TOP OF SHELF FOR ADA PORTIONS
- 26 SPECIFICATIONS FOR R-VALUE ALL EXPOSED FOAMED IN PLACE INSULATION ABOVE CEILING, IN TRUSS/ATTIC SPACE ETC., REQUIRES INTUMESCENT COATING, (TYP)
- 27 ENTRY MAT - SEE SPECIFICATIONS AND DETAIL 8/A430
- 28 PLASTIC LAMINATE BASE AND WALL CABINETS. SEE DRAWING A100
- EP ELECTRICAL PANEL SEE ELECTRICAL DRAWINGS
- HC MANIFOLD CABINET FOR RADIANT PIPES SEE DETAIL 2/A430, MECHANICAL & STRUCTURAL DRAWINGS
- CHH CABINET UNIT HEATER SEE MECHANICAL DRAWINGS

MA

MITCHELL
ASSOCIATES
ARCHITECTS
PLLC

29 THACHER PARK ROAD
VOORHEESVILLE, NY 12186
(518) 745-4511 FAX (518) 745-2950
WWW.MITCHELL-ARCHITECTS.COM

EMERGENCY
SERVICE
FACILITIES

CONSULTANTS:
INSITE ENGINEERING SURVEYING
& LANDSCAPE ARCHITECTURE, P.C.
3 GARRETT PLACE
CARMEL, NY 12012
(518) 225-9410 FAX: (518) 225-9111

CRAIG A. MALONEY, P.E.
STRUCTURAL ENGINEERING CONSULTANT
3 BENEDICT COURT
BALSTON SPA, NY 12020
(518) 584-9444 FAX: (518) 584-9955

GERARD ASSOCIATES
CONSULTING ENGINEERS, P.C.
MECHANICAL, PLUMBING,
AND ELECTRICAL
223 MAIN STREET
COSHEN, NY 12024
(518) 231-1212 FAX: (518) 231-1939

COPYRIGHT 2020
MITCHELL ASSOCIATES ARCHITECTS
UNAUTHORIZED ALTERATION OR ADDITION
TO THIS DOCUMENT IS A VIOLATION OF LAW

NEW STATION
FOR
PUTNAM VALLEY
FIRE STATION #1

OSCAWANA LAKE ROAD
PUTNAM VALLEY, NEW YORK

REVISION HISTORY

	DATE	DESCRIPTION
1		
2		
3		
4		
5		
6		
7		
8		
9		
10		

2nd FLOOR PLAN

SCALE: 1/8" = 1'-0"
DWG. BY: RAM/JDA
DWG. DATE: 8/14/2020
STATUS: BID DRAWINGS

A101

PLOT TIME: 1:03 AM