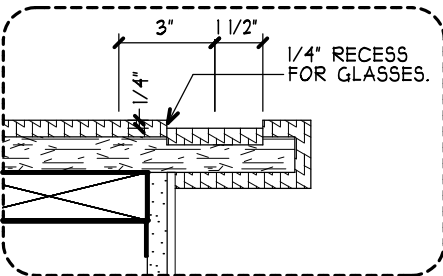
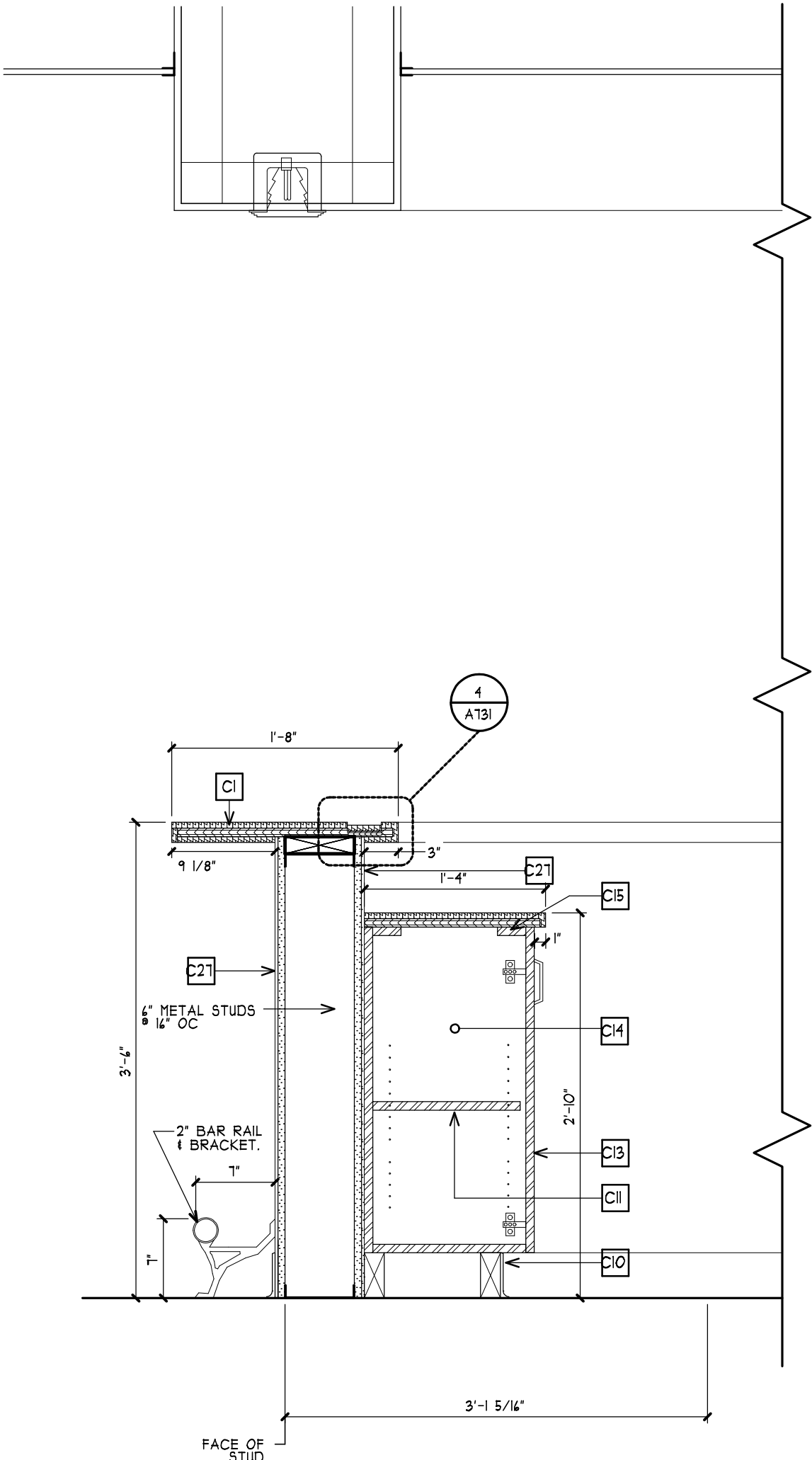


3 SECTION @ COUNTER  
A131 SCALE: 1" = 1'-0" 1/A13

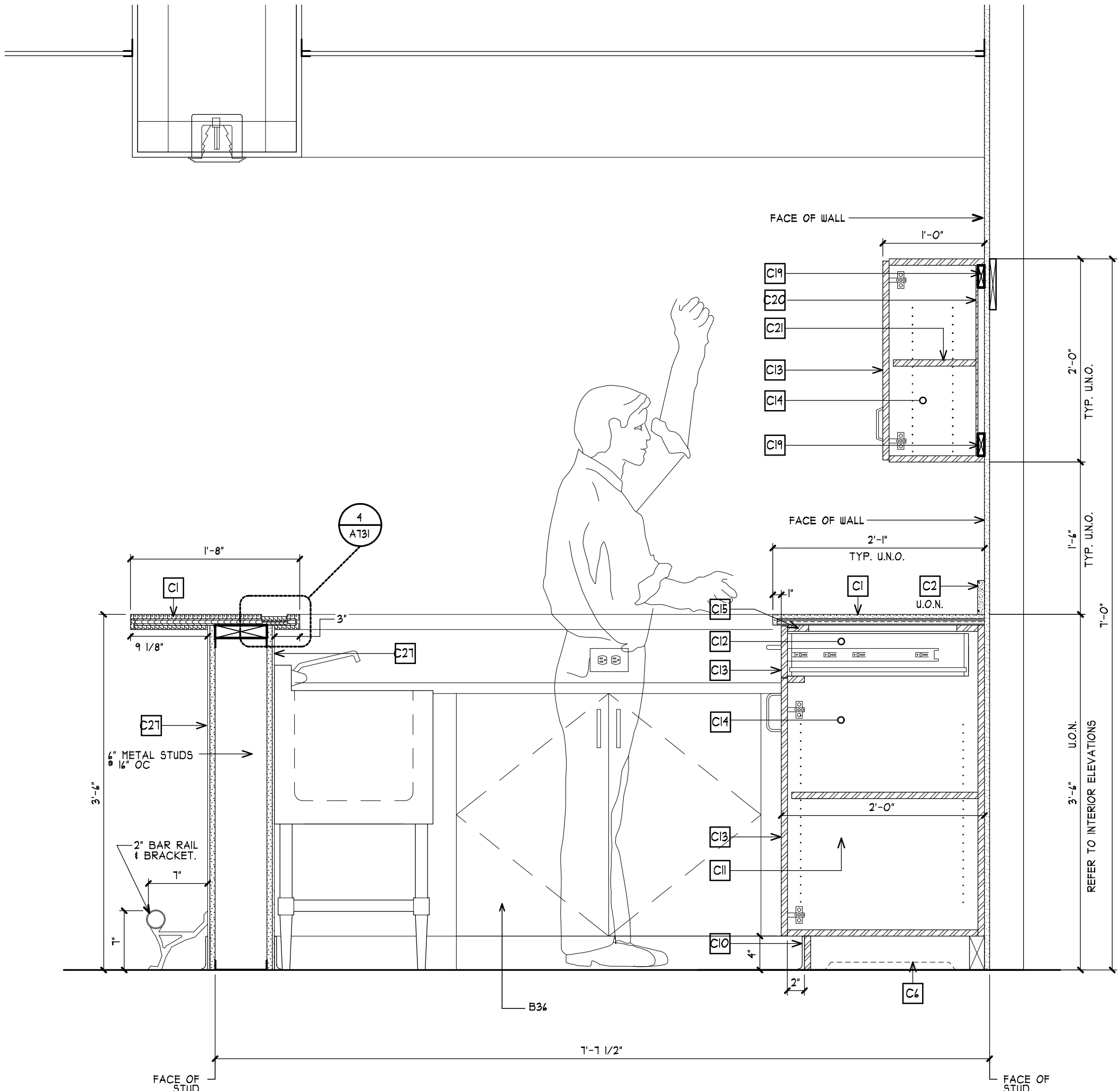


4 BAR COUNTER DETAIL  
A131 SCALE: 2" = 1'-0"

2 SECTION @ COUNTER  
A131 SCALE: 1" = 1'-0" 1/A13



1 SECTION @ COUNTER  
A131 SCALE: 1" = 1'-0" 1/A13



CASEWORK KEY NOTES			
C1	1/2" SOLID SURFACE COUNTERTOP W/ 3/4" SUBSTRATE.	C14	CABINET BODY: PLASTIC LAMINATED ON 3/4" PARTICLE BOARD W/ 3mm PVC EDGE.
C2	BACKSPLASH - 4" HIGH / 1" SOLID SURFACE.	C15	3/4" x 2 1/2" WEB FRAME PLASTIC LAMINATED AT EXPOSED EDGES.
C3	BACKSPLASH - 4" HIGH / 1" SOLID SURFACE.	C16	SHELF, 3/4" PARTICLE BOARD W/ PLASTIC LAMINATE FINISH AND PVC EDGE BAND.
C4	APRON - 3/4" PARTICLE BOARD W/ PLASTIC LAMINATED FINISH AND 3mm PVC EDGE BAND. PLASTIC LAMINATE ALL EXPOSED SURFACES.	C17	WORKSTATION SCREEN: PLASTIC LAMINATED ON 3/4" PARTICLE BOARD W/ 3mm PVC EDGE. 5mm RADIUS AT CORNERS AS SHOWN. PROVIDE BACK SUPPORT.
C5	CONTINUOUS 3/4" PARTICLE BOARD W/ PLASTIC LAMINATED FINISH. PLASTIC LAMINATE ALL EXPOSED SURFACES.	C18	TACKABLE SURFACE: 1/2" THICK MIN.
C6	WOOD OR PANEL PRODUCT STRETCHERS ON CENTER IN CABINETS GREATER THAN 30 INCHES WIDE.	C19	3/4" x 2 1/2" WOOD STRETCH CLEAT TOP & BOTTOM.
C7	FILE DRAWERS (TYP): PROVIDE ALUMINUM RAILS FOR LETTER SIZED HANGING FILE FOLDERS.	C20	CABINET BACK: PLASTIC LAMINATED ON 1/4" HARD BOARD, FULL RABBET BOUND.
C8	COUNTER-TOP SUPPORT - 3/4" PARTICLE BOARD W/ PLASTIC LAMINATE FINISH AND PVC EDGE BAND.	C21	ADJUSTABLE SHELF/FULL DEPTH: PLASTIC LAMINATED ON 3/4" PARTICLE BOARD W/ 3mm PVC EDGE. 5mm MULTIPLE HOLE PIN SUPPORT AT 1" ON CENTER.
C9	3/4" PARTICLE BOARD, PLASTIC LAMINATED AT EXPOSED SURFACES.	C22	CLEAR ANODIZED ALUMINUM SUPPORT BRACKET: 24" X 18"
C10	TOE KICK: 3/4" EXTERIOR GRADE PLYWOOD W/ BASE AS SCHEDULED.	C23	CONTINUOUS 1-1/2" X 1-1/2" ANGLE. PAINTED TO MATCH WALL COLOR.
C11	ADJUSTABLE SHELF: PLASTIC LAMINATED ON 3/4" PARTICLE BOARD W/ 3mm PVC EDGE. 5mm MULTIPLE HOLE PIN SUPPORT AT 1" ON CENTER.	C24	STAINLESS STEEL COUNTERTOP (TYP)
C12	DRAWER BOX: 1/2" PLYWOOD SIDES W/ 1/2" PLYWOOD BOTTOM SET INTO DADO AT ALL SIDES.	C25	CLEAR ANODIZED ALUMINUM SUPPORT BRACKET: 6" X 8"
C13	DRAWER/CABINET FRONT: PLASTIC LAMINATED ON 3/4" PARTICLE BOARD W/ 3mm PVC EDGE (ALL DOOR & DRAWERS).	C26	STAINLESS STEEL SHELF
NOTE: -SEE OFFICE ELEVATIONS FOR CURRENT COMPONENT LOCATIONS AND OFFICE EQUIPMENT. -PROVIDE ADEQUATE BLOCKING IN ALL WALLS WHERE CABINETS, SHELVING OR EQUIPMENT ARE TO BE MOUNTED.		C27	SPECIAL FRP

MA

Mitchell Associates Architects PLLC

29 THACHER PARK ROAD  
VOORHEESVILLE, NY 12184  
(518) 745-4571 FAX (518) 745-2950  
WWW.MITCHELL-ARCHITECTS.COM

EMERGENCY SERVICE

FACILITIES

CONSULTANTS:

INSITE ENGINEERING SURVEYING & LANDSCAPE ARCHITECTURE, P.C.  
3 CARETT PLACE  
CARMEL, NY 12012  
(845) 225-9490 FAX: (845) 225-9111

CRAIG A. MALONEY, P.E.  
STRUCTURAL ENGINEERING CONSULTANT  
3 BENEDICT COURT  
BALLSTON SPA, NY 12020  
(518) 584-9444 FAX: (518) 584-9955

GERARD ASSOCIATES

CONSULTING ENGINEERS, P.C.  
MECHANICAL, PLUMBING, AND ELECTRICAL  
223 MAIN STREET  
GOSHEN, NY 10924  
(845) 291-1212 FAX: (845) 291-1939

COPYRIGHT 2020  
MITCHELL ASSOCIATES ARCHITECTS  
UNAUTHORIZED ALTERATION OR ADDITION  
TO THIS DOCUMENT IS A VIOLATION OF LAW

NEW STATION FOR PUTNAM VALLEY FIRE STATION #1

OSCAWANA LAKE ROAD  
PUTNAM VALLEY, NEW YORK

REVISION HISTORY	
DATE	DESCRIPTION
Δ	
Δ	
Δ	
Δ	
Δ	
Δ	
Δ	
Δ	

CASEWORK ELEVATIONS & DETAILS

SCALE: AS NOTED  
DWG BY: JDA  
DWG DATE: 8/14/2020  
STATUS: BID DRAWINGS

A131

PLOT TIME: 11/1 PM