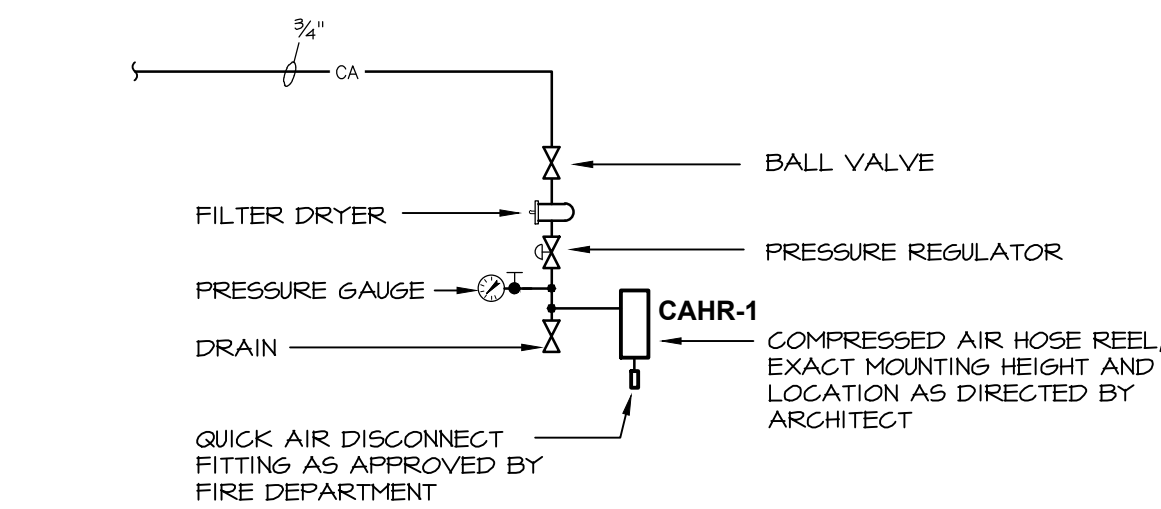


- NOTES:
- SEWAGE EJECTOR IS CONNECTED TO THE EMERGENCY GENERATOR.
 - SEWAGE EJECTOR CONTROL PANEL IS EQUIPPED WITH AN AUDIBLE AND VISUAL ALARM. FIELD LOCATED IN MECHANICAL ROOM

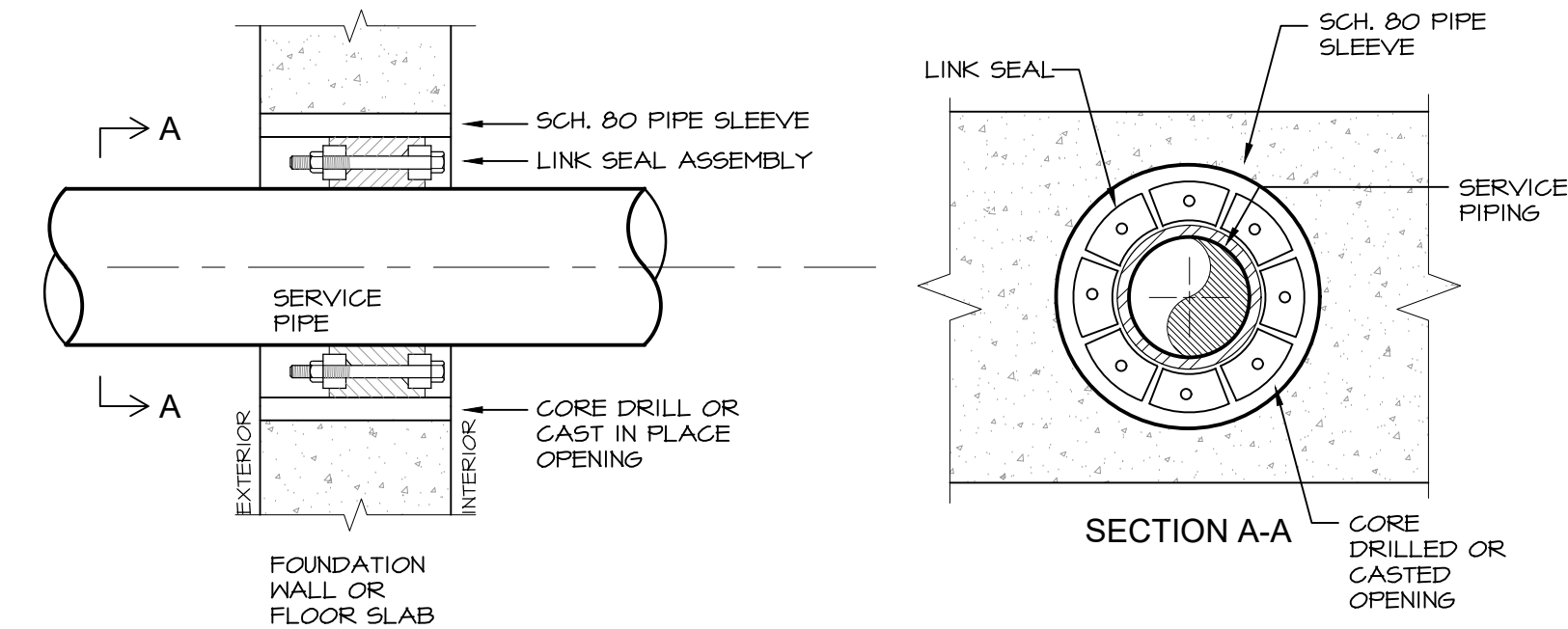
1 DUPLEX SEWAGE EJECTOR (SE-1) DETAIL

P201 NOT TO SCALE



4 COMPRESSED AIR HOSE REEL DETAIL

P201 NOT TO SCALE



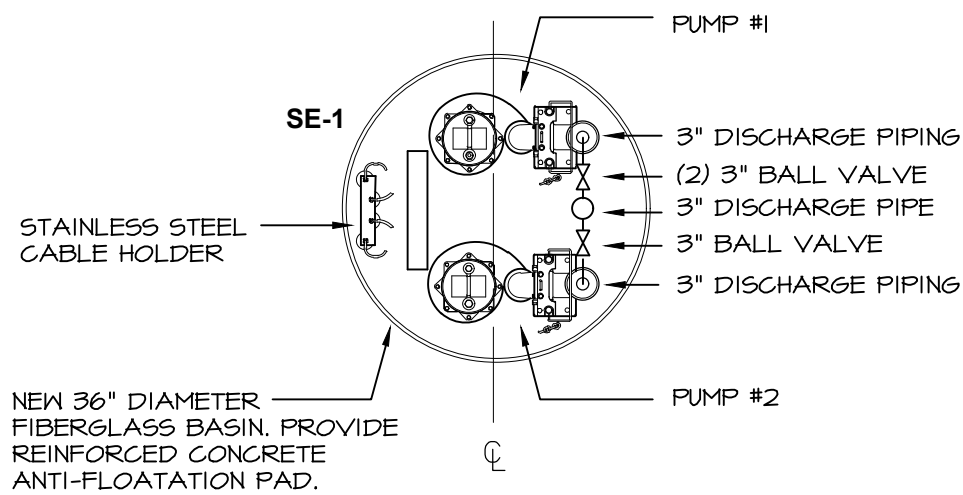
- NOTES:
- SEAL ASSEMBLY BASED ON THUNDERLINE MODEL "C" LINK-SEAL MODULAR SEAL, WITH EPDM SEAL ELEMENT, COMPOSITE PRESSURE PLATES, STEEL WITH 2-PART ZINC DICHROMATE & ORGANIC COATED NUTS AND BOLTS RATED FOR AN OPERATING TEMPERATURE RANGE OF -40°F TO +250°F.
 - USE LINK SEAL AT ALL LOCATIONS WHERE PIPES PENETRATE NEW OR EXISTING FOUNDATION WALLS AND SLABS ON GRADE.

7 LINK SEAL DETAIL

P201 NOT TO SCALE

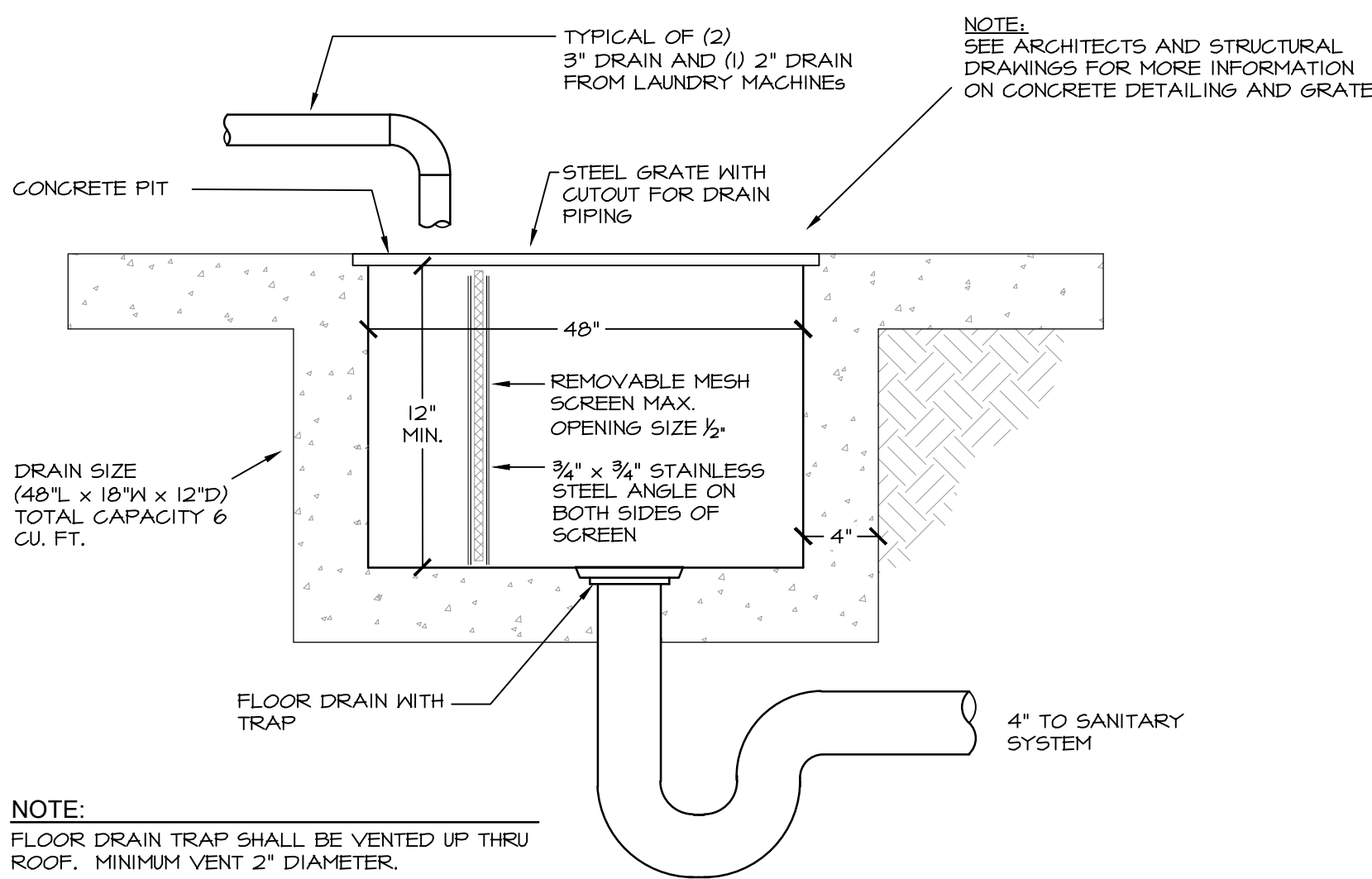
DUPLEX SEWAGE PUMP SYSTEM (SE-1)	
QUANTITY	DESCRIPTION
2	LEHIO3M2-2 SEWAGE PUMPS, 1 HP, 208 V, 3 PHASE, CAPACITIES OF 200 GPM HEADS TO 53' TDH, 25' POWER CORD
1	AE34-3-511 NEMA 4X DUPLEX ALTERNATING CONTROL PANEL INCLUDING THREE FLOATS, AUX, CONTACTS, AND INTEGRAL AUDIO/VISUAL HIGH LEVEL ALARM
1	36" DIA. x 12" H FIBERGLASS BASIN WITH ANTI-FLOATATION FLANGE WITH 3" TOP DISCHARGE
1	36" STEEL GLASS TIGHT HATCH COVER (1) 3" DISCHARGE FLANGE (1) 3" VENT FLANGE, (1) 2" ELECTRICAL FLANGE
2	GUIDE RAIL ASSEMBLY, INCLUDING 6R22-LE GUIDE RAIL, 1/2" GALVANIZED STEEL RAILS, S/S LIFTING CHAIN, ETC.
1	(1) 4" UNMOUNTED INLET HUB
1	MISCELLANEOUS HARDWARE AND PLUMBING, INCLUDING PVC BALL VALVES, PVC CHECK VALVES, FLOAT BRACKET, PVC DISCHARGE PIPE, ETC.
1	JB70 JUNCTION BOX, WITH WATERTIGHT CABLE CONNECTIONS AND 2" CONDUIT COUPLING.

LIBERTY PUMPS MODEL # EPS618T4, 36"x12" DUPLEX LEHIO3M2-2 SEWAGE SYSTEM



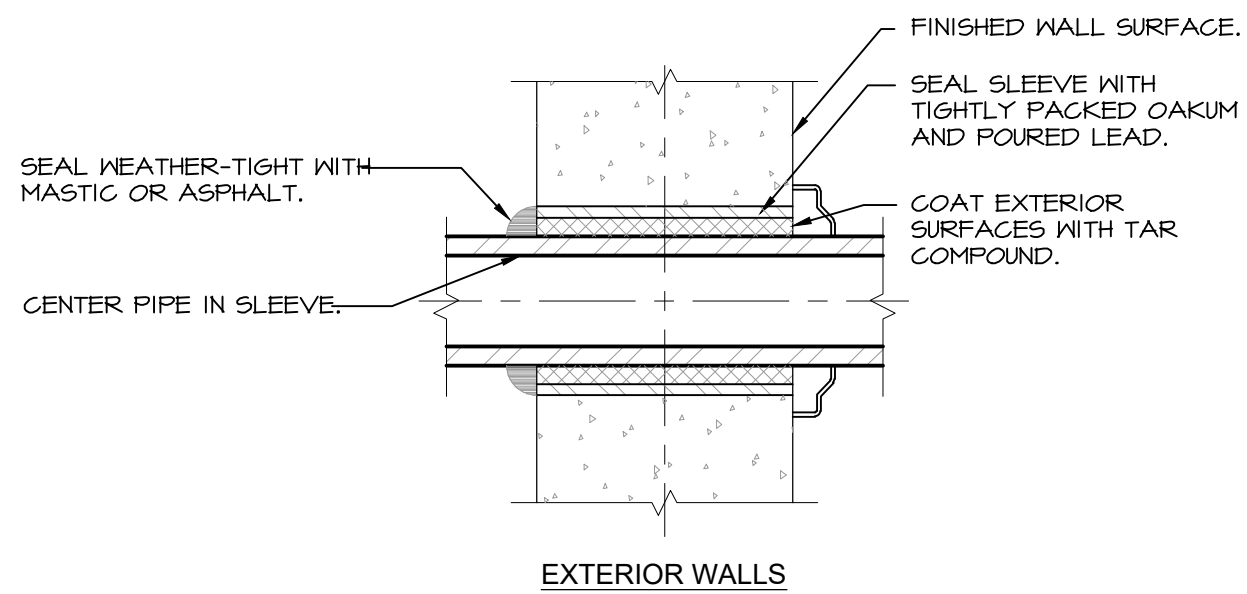
2 DUPLEX SEWAGE EJECTOR (SE-1) PLAN DETAIL

P201 NOT TO SCALE



5 TROUGH DETAIL

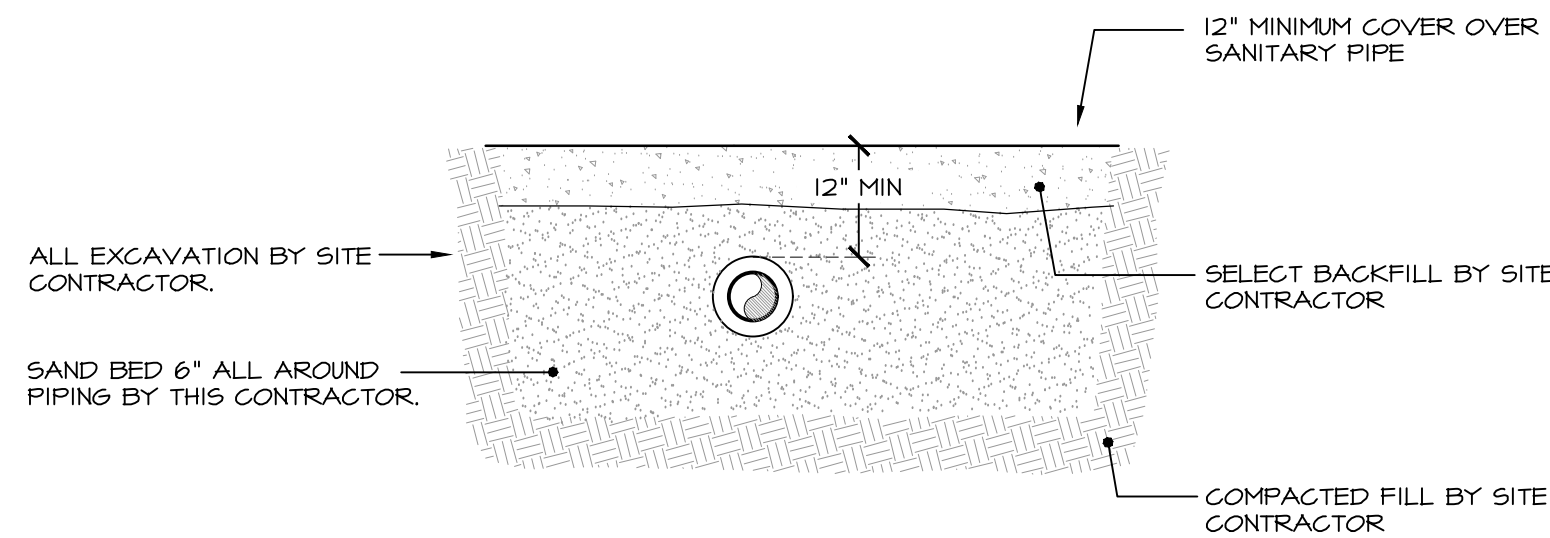
P201 NOT TO SCALE



- NOTE:
- PIPE SLEEVE FOR EXTERIOR WALL ABOVE GRADE.

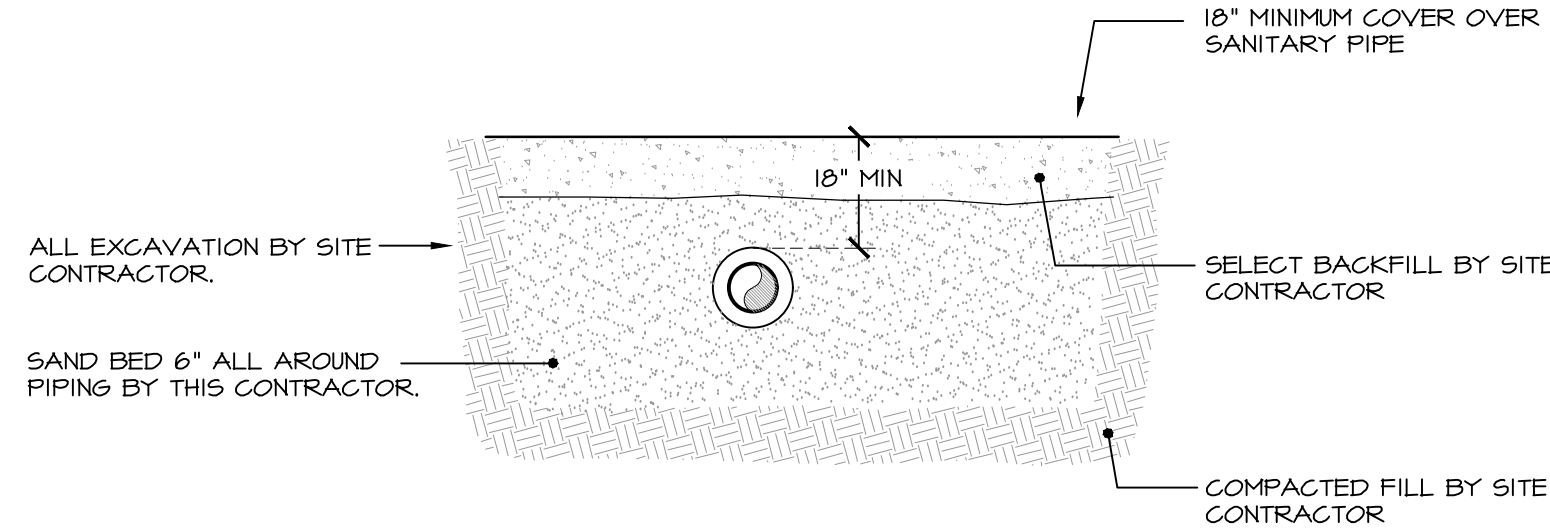
8 EXTERIOR WALL PIPE PENETRATION DETAIL

P201 NOT TO SCALE



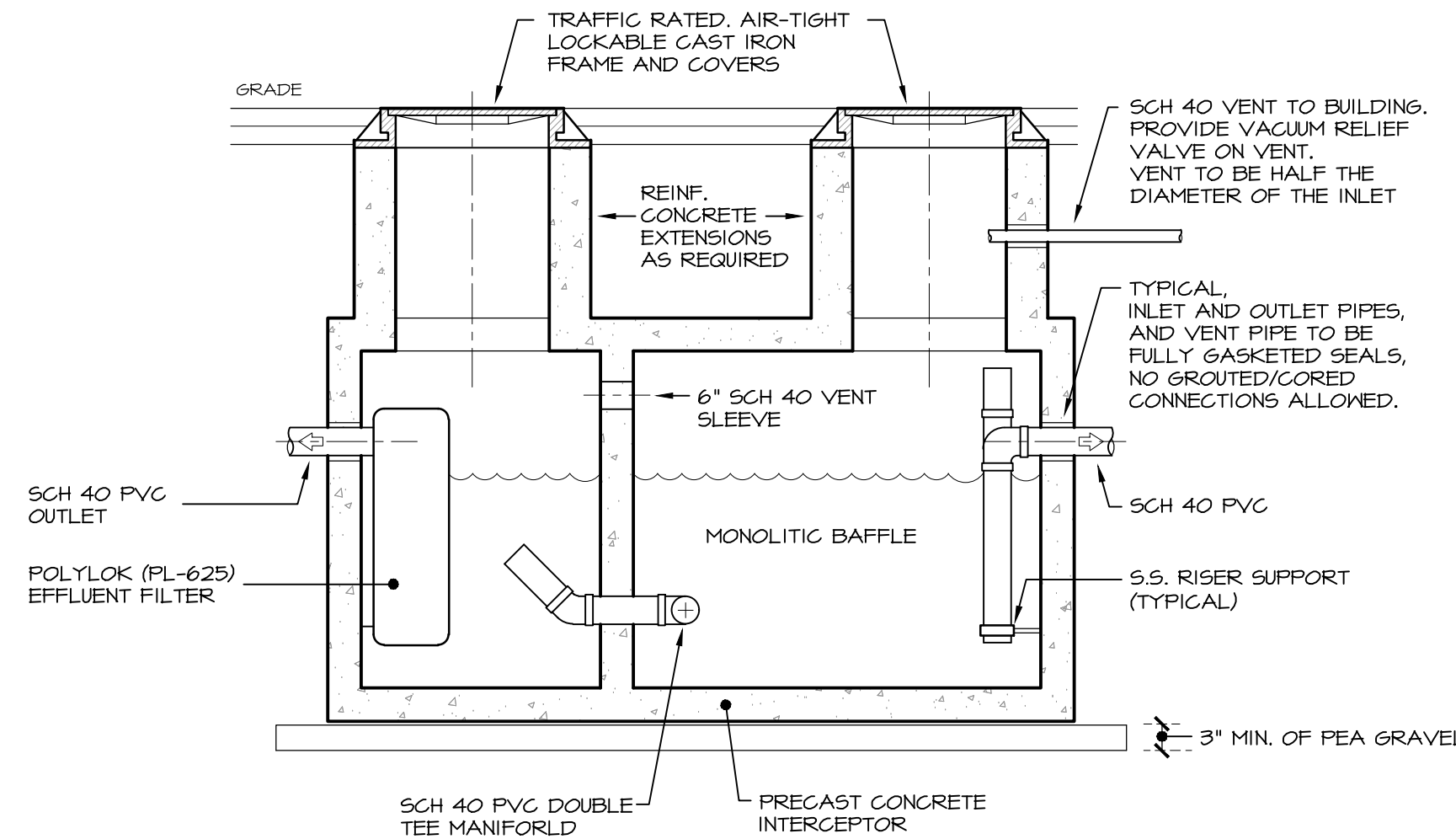
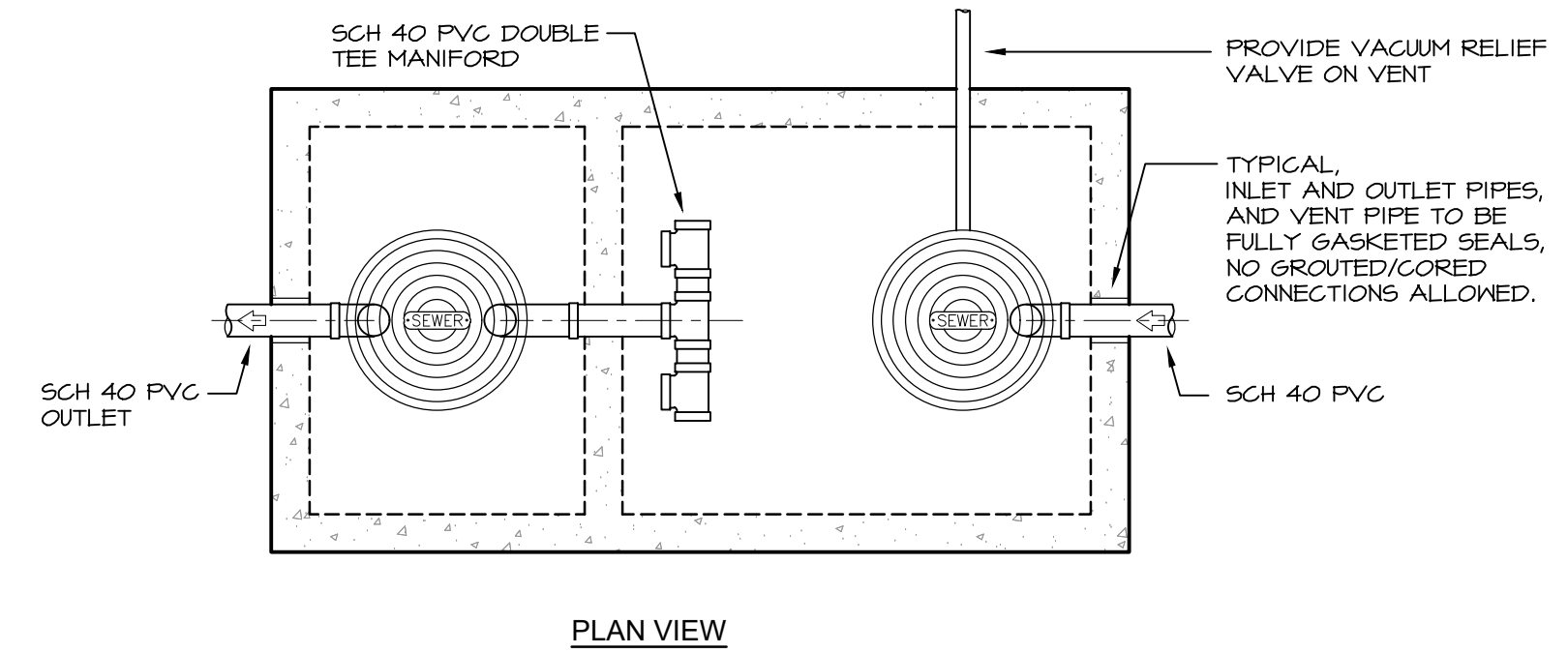
3 INSIDE BUILDING SANITARY PIPING DETAIL

P201 NOT TO SCALE



6 OUTSIDE BUILDING SANITARY PIPING DETAIL

P201 NOT TO SCALE

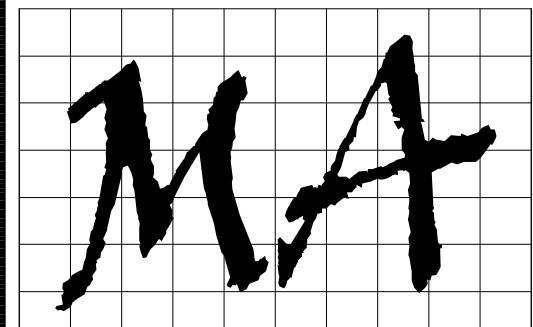


SPECIFICATIONS	
USE WOODARD'S CONCRETE PRODUCTS OR APPROVED EQUAL AS FOLLOWS	
CONCRETE MINIMUM STRENGTH - 4,000 PSI @ 28 DAYS.	
STEEL REINFORCEMENT - #4 AND #5 REBAR/ASTM A615	
CONSTRUCTION JOINT - BUTYL RUBBER SEALANT	
PIPE CONNECTION - POLYLOC SEAL OR AS NEEDED	
GREASE TANK SHALL BE CONSTRUCTED FOR HIGHWAY LOADING.	

- NOTE:
- THIS DETAIL CONTAINS THE BASIC ELEMENTS AND EQUIPMENT FOR A GREASE TRAP. THE CONFIGURATION OF CONNECTIONS MAY VARY. SEE PLUMBING DRAWINGS.

9 GREASE TANK 1000 GALLON DETAIL

P201 NOT TO SCALE



MITCHELL ASSOCIATES ARCHITECTS

29 THACHER PARK ROAD
VOORHEESVILLE, NY 12186
(518) 765-4511 FAX (518) 765-2150
WWW.MITCHELL-ARCHITECTS.COM

EMERGENCY SERVICE

FACILITIES

CONSULTANTS:
INSITE ENGINEERING SURVEYING
& LANDSCAPE ARCHITECTURE, P.C.
3 GARRET PLACE
CARMEL, NY 10512
(845) 225-9640 FAX: (845) 225-9717

CRAIG A. MALONEY P.E.
STRUCTURAL ENGINEERING CONSULTANT
3 BENEDICT COURT
BALLSTON SPA, NY 12020
(518) 584-4844 FAX: (518) 584-4855

GERARD ASSOCIATES
CONSULTING ENGINEERS, P.C.
MECHANICAL, PLUMBING
AND ELECTRICAL
223 MAIN STREET
GOSHEN, NY 10924
(845) 241-1212
GARD011

COPYRIGHT 2012
MITCHELL ASSOCIATES ARCHITECTS
UNAUTHORIZED ALTERATION OR ADDITION
TO THIS DOCUMENT IS A VIOLATION OF LAW

NEW STATION FOR

PUTNAM VALLEY FIRE STATION #1

OSCAWANA LAKE ROAD
PUTNAM VALLEY, NEW YORK

REVISION HISTORY		
DATE	DESCRIPTION	
△		
△		
△		
△		
△		
△		
△		

PLUMBING: DETAILS

SCALE: AS NOTED
DWG. BY: KC
DWG. DATE: 8/14/2020
STATUS: BID DRAWINGS

P201