

IF A VIOLATION OF STATE EDUCATION LAW FOR ANY PERSON, UNLESS UNDER THE DIRECTION OF A LICENSED ARCHITECT/ENGINEER TO ALTER THE DOCUMENT IN ANYWAY. ALTERATIONS MUST HAVE THE SEAL APPLIED ALONG WITH A DESCRIPTION OF THE ALTERATIONS. DATE AND ARCHITECT/ENGINEER'S SIGNATURE. COPYRIGHT © 2021

Architect:
 Saratoga Associates
 21 Congress Street, Suite 201
 Saratoga Springs, NY 12866

SARATOGA ASSOCIATES
 Landscape Architects, Architects, Engineers, and Planners, P.C.

Engineer:
 Barton and Loguidice
 443 Electronics Parkway
 Liverpool, NY 13088

Barton & Loguidice

Exhibit Designer:
 AMAZE DESIGN
 PO Box 51905
 Boston, MA 02205-9761

amaze DESIGN

NYS OPRHP Taconic Region
 9 Old Post Rd, PO Box 308
 Staatsburg, New York 12580
 (845) 889-4100
 Regional Director: Linda Cooper
 District Manager: Garrett Jobson

Project Title:
 Philipse Manor Hall State Historic Site
 Construction of Elevator/Restroom
 Addition, Interior and
 Exterior Rehabilitation and Site
 Enhancements

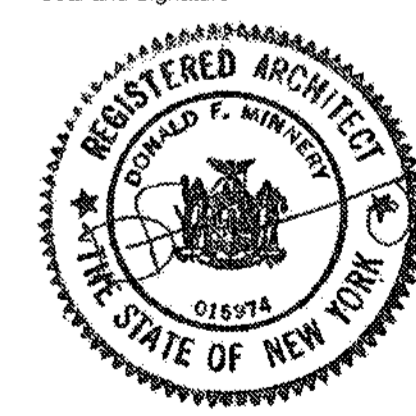
Project Location:
 29 Warburton Ave, Yonkers, NY 10701

Key Plan

REVISIONS

Rev No	Description	Date
1	Addendum #2	6/24/21

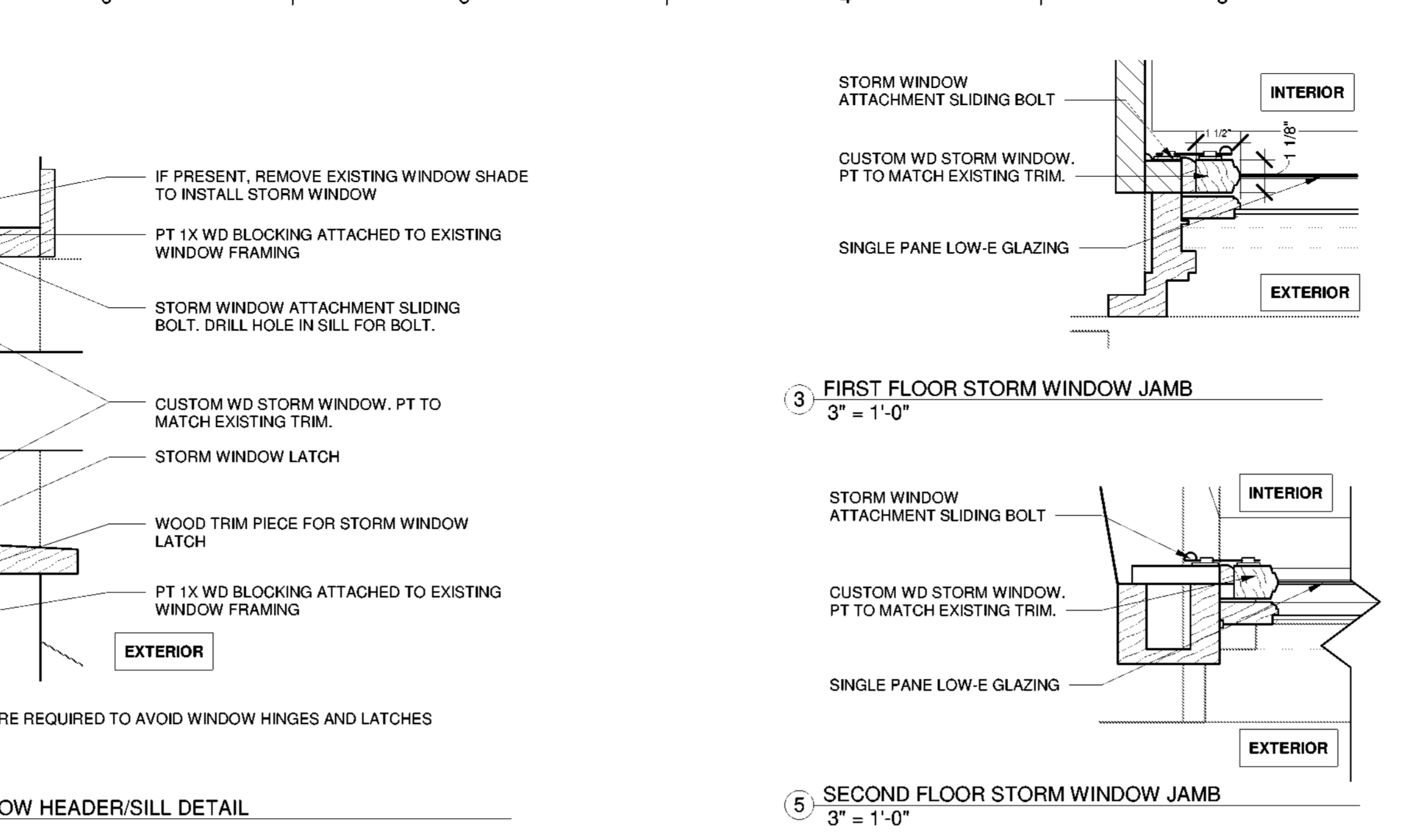
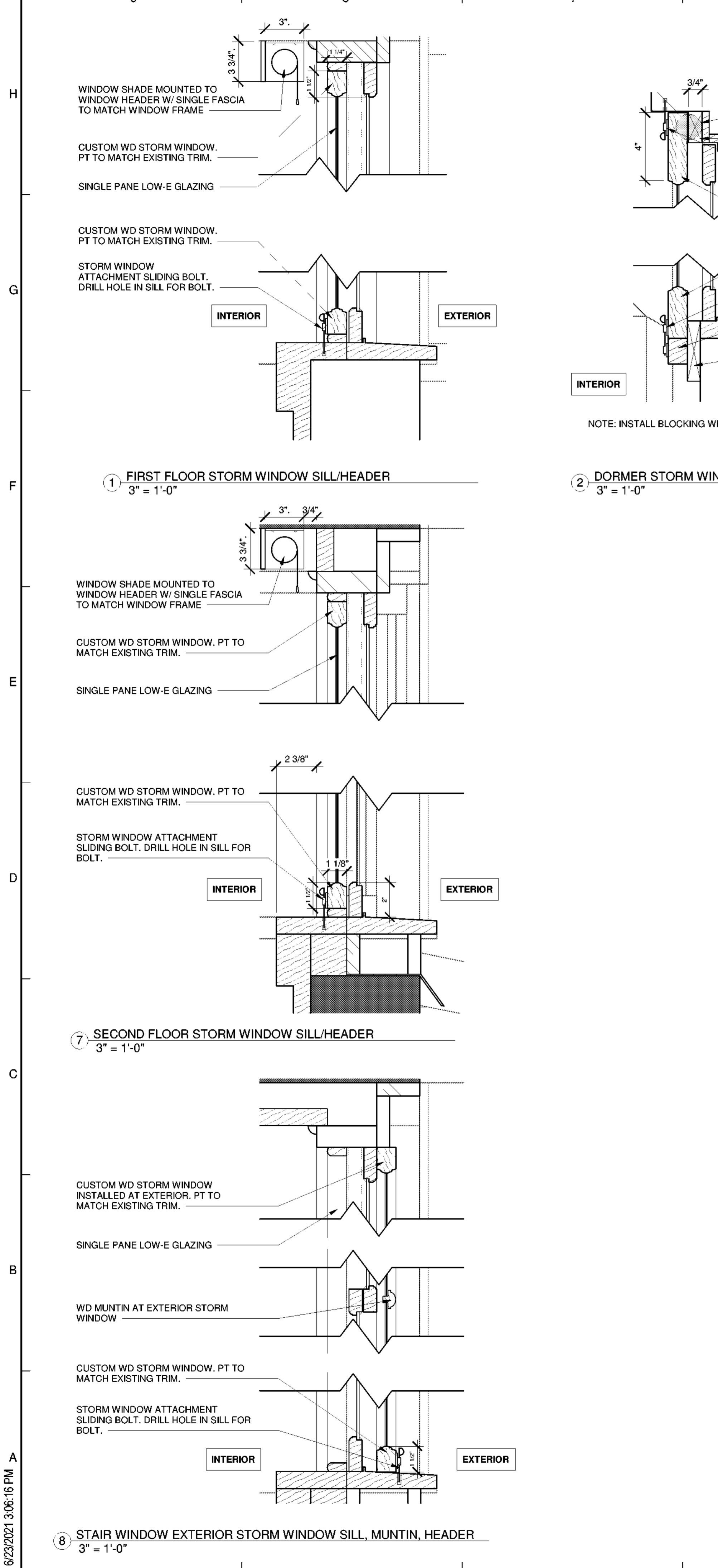
Drawn By: **ACM**
 Design By: **EDW**
 Checked By: **CTS**
 Approved By: **DFM**
 Date: **5/28/2021**

Seal and Signature


Sheet Title:
 MANOR WINDOW SCHEDULE AND DETAILS

Drawing Number:
A800

Bid Documents
 Project Number: **18006.47**
 Sheet:



Window Schedule									
Mark	Width	Height	Sill	Jamb	Head	Storm Windows	Shutters	Comments	
01	4' - 7"	6' - 8"	1 / A800	3 / A800	1 / A800	INTERIOR	REPLACE MISSING RIGHT SHUTTER DOG, REATTACH IRON HANDLE ON LEFT SHUTTER.		
02	4' - 7"	6' - 8"	1 / A800	3 / A800	1 / A800	INTERIOR			
03	4' - 8"	6' - 8"	1 / A800	3 / A800	1 / A800	INTERIOR			
04	4' - 8"	6' - 8"	1 / A800	3 / A800	1 / A800	INTERIOR			
05	4' - 8"	6' - 8"	1 / A800	3 / A800	1 / A800	INTERIOR			
06	4' - 8"	6' - 8"	1 / A800	3 / A800	1 / A800	INTERIOR			
07	4' - 4"	6' - 8"	7 / A800	5 / A800	7 / A800	INTERIOR			
08	4' - 4"	6' - 8"	7 / A800	5 / A800	7 / A800	INTERIOR			
09	4' - 4"	6' - 8"	7 / A800	5 / A800	7 / A800	INTERIOR			
10	4' - 7"	6' - 2"	7 / A800	5 / A800	7 / A800	INTERIOR			
11	4' - 7"	6' - 2"	7 / A800	5 / A800	7 / A800	INTERIOR			
12	4' - 7"	6' - 2"	7 / A800	5 / A800	7 / A800	INTERIOR			
13	4' - 7"	6' - 2"	7 / A800	5 / A800	7 / A800	INTERIOR			
14	4' - 7"	6' - 2"	7 / A800	5 / A800	7 / A800	INTERIOR			
15	4' - 2"	6' - 8"	1 / A800	3 / A800	1 / A800	INTERIOR	REPLACE DAMAGED "H" HINGE AND RE-HANG.		
16	4' - 3"	6' - 8"	1 / A800	3 / A800	1 / A800	INTERIOR			
17	4' - 7"	6' - 8"	1 / A800	3 / A800	1 / A800	INTERIOR			
18	4' - 7"	6' - 8"	1 / A800	3 / A800	1 / A800	INTERIOR			
19	4' - 3"	6' - 8"	7 / A800	5 / A800	7 / A800	INTERIOR			
20	4' - 3"	6' - 8"	7 / A800	5 / A800	7 / A800	INTERIOR			
21	4' - 3"	6' - 8"	7 / A800	5 / A800	7 / A800	INTERIOR			
22	4' - 4"	6' - 8"	7 / A800	5 / A800	7 / A800	INTERIOR			
23	4' - 4"	6' - 8"	7 / A800	5 / A800	7 / A800	INTERIOR			
24	4' - 0"	6' - 8"	1 / A800	3 / A800	1 / A800	INTERIOR			
25	4' - 0"	6' - 8"	1 / A800	3 / A800	1 / A800	INTERIOR	LEFT SHUTTER - DISASSEMBLE AND REGLUE ALL JOINTS. REHANG RIGHT SHUTTER (STORED IN BASEMENT), REUSE EXISTING "H" HINGES.		
26	4' - 3"	6' - 8"	7 / A800	5 / A800	7 / A800	INTERIOR			
27	4' - 3"	6' - 8"	7 / A800	5 / A800	7 / A800	INTERIOR			
28	4' - 8"	6' - 8"	1 / A800	3 / A800	1 / A800	INTERIOR			
29	4' - 9"	6' - 8"	1 / A800	3 / A800	1 / A800	INTERIOR			
30	4' - 10"	6' - 8"	1 / A800	3 / A800	1 / A800	INTERIOR	REPLACE RIGHT SHUTTER DOG. RETURN RIGHT SHUTTER TO PARKS.		
31	4' - 10"	6' - 8"	1 / A800	3 / A800	1 / A800	INTERIOR	REMOVE SHUTTERS AND HARDWARE & TURN OVER TO PARKS.		
32	4' - 7"	6' - 2"	7 / A800	5 / A800	7 / A800	INTERIOR			
33	4' - 7"	6' - 2"	7 / A800	5 / A800	7 / A800	INTERIOR			
34	4' - 7"	6' - 2"	7 / A800	5 / A800	7 / A800	INTERIOR	RIGHT SHUTTER - REMOVE SHUTTER AND HARDWARE & TURN OVER TO PARKS.	EPOXY FILLER AND CONSOLIDATION ON SILL.	
35	4' - 7"	6' - 2"				INTERIOR	DISMANTLE, SAVE ALL SASH, SHUTTERS, TRIM, HARDWARE & TURN OVER TO PARKS.		
36	3' - 4"	6' - 0"	8 / A800	4 / A800	8 / A800	EXTERIOR			
37	3' - 4"	6' - 0"	8 / A800	4 / A800	8 / A800	EXTERIOR		DUTCHMAN REPAIR ON LOWER LEFT OF BOTTOM SASH.	
38	4' - 2"	6' - 8"	1 / A800	3 / A800	1 / A800	INTERIOR		MASONRY - REPOINT ABOVE WINDOW OPENING	
39	4' - 2"	6' - 8"	1 / A800	3 / A800	1 / A800	INTERIOR		MINOR EPOXY FILLER AND CONSOLIDATION ON RIGHT SHUTTER.	
D1	3' - 5"	3' - 0"	2 / A800	6 / A800	2 / A800	INTERIOR		REMAIN UNDISTURBED	
D2	3' - 5"	3' - 0"	2 / A800	6 / A800	2 / A800	INTERIOR		REMAIN UNDISTURBED	
D3	3' - 5"	3' - 0"	2 / A800	6 / A800	2 / A800	INTERIOR			
D4	3' - 5"	3' - 0"	2 / A800	6 / A800	2 / A800	INTERIOR			
D5	3' - 5"	3' - 0"	2 / A800	6 / A800	2 / A800	INTERIOR			
D6	3' - 5"	3' - 0"	2 / A800	6 / A800	2 / A800	INTERIOR			
D7	3' - 5"	3' - 0"	2 / A800	6 / A800	2 / A800	INTERIOR			
D8	3' - 5"	3' - 0"	2 / A800	6 / A800	2 / A800	INTERIOR			
D9	3' - 5"	3' - 0"	2 / A800	6 / A800	2 / A800	INTERIOR		RIGHT SASH IS PAINTED SHUT. LEFT HINGE IS LOOSE (REATTACH). 50% GLAZING PUTTY REPLACEMENT BOTH SASH.	
D10	3' - 5"	3' - 0"	2 / A800	6 / A800	2 / A800	INTERIOR		REMAIN UNDISTURBED	
D11	3' - 5"	3' - 0"	2 / A800	6 / A800	2 / A800	INTERIOR		REMAIN UNDISTURBED	

GENERAL NOTES:

- LIGHT FILTERING SHADES TO BE INSTALLED ON ALL EXISTING WINDOWS.
- RETAIN PARTIAL WEATHERSTRIPPING ON ALL DORMER WINDOWS. PROVIDE SEALANT AT ALL DORMER WINDOWS FOR WEATHERTIGHT SEAL.
- ASSUME 10% GLAZING PUTTY REPLACEMENT ON EAST, NORTH AND UNDER THE WEST PORCH. ASSUME 25% GLAZING PUTTY REPLACEMENT ABOVE THE WEST PORCH AND ALL OF SOUTH WINDOWS.
- HARDWARE: SEE SPECS. NEW HARDWARE TO BE CUSTOM WROUGHT STEEL. ALL WOOD SCREWS TO BE FLAT-HEAD SLOTTED, NOT PHILIPS HEAD.