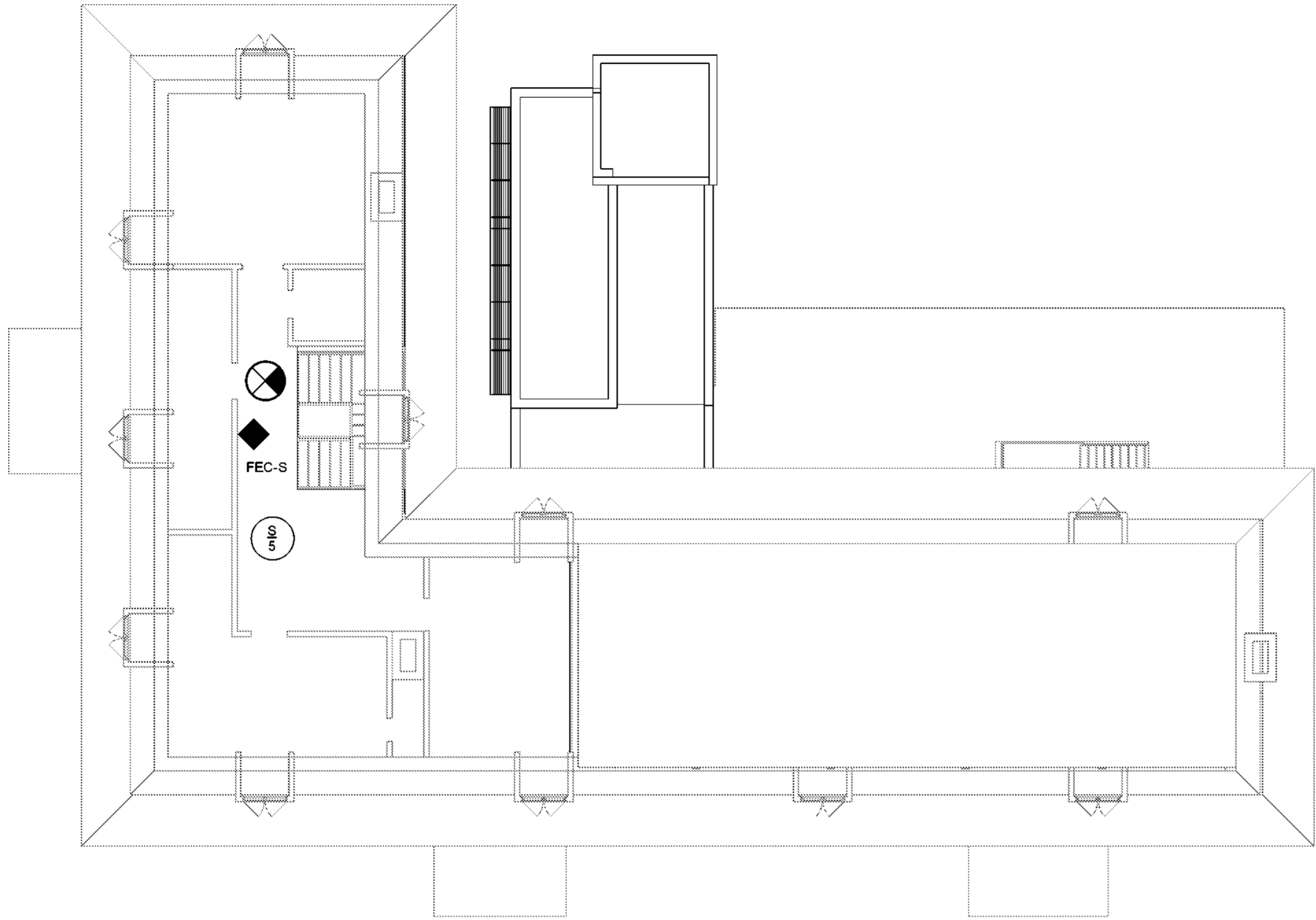
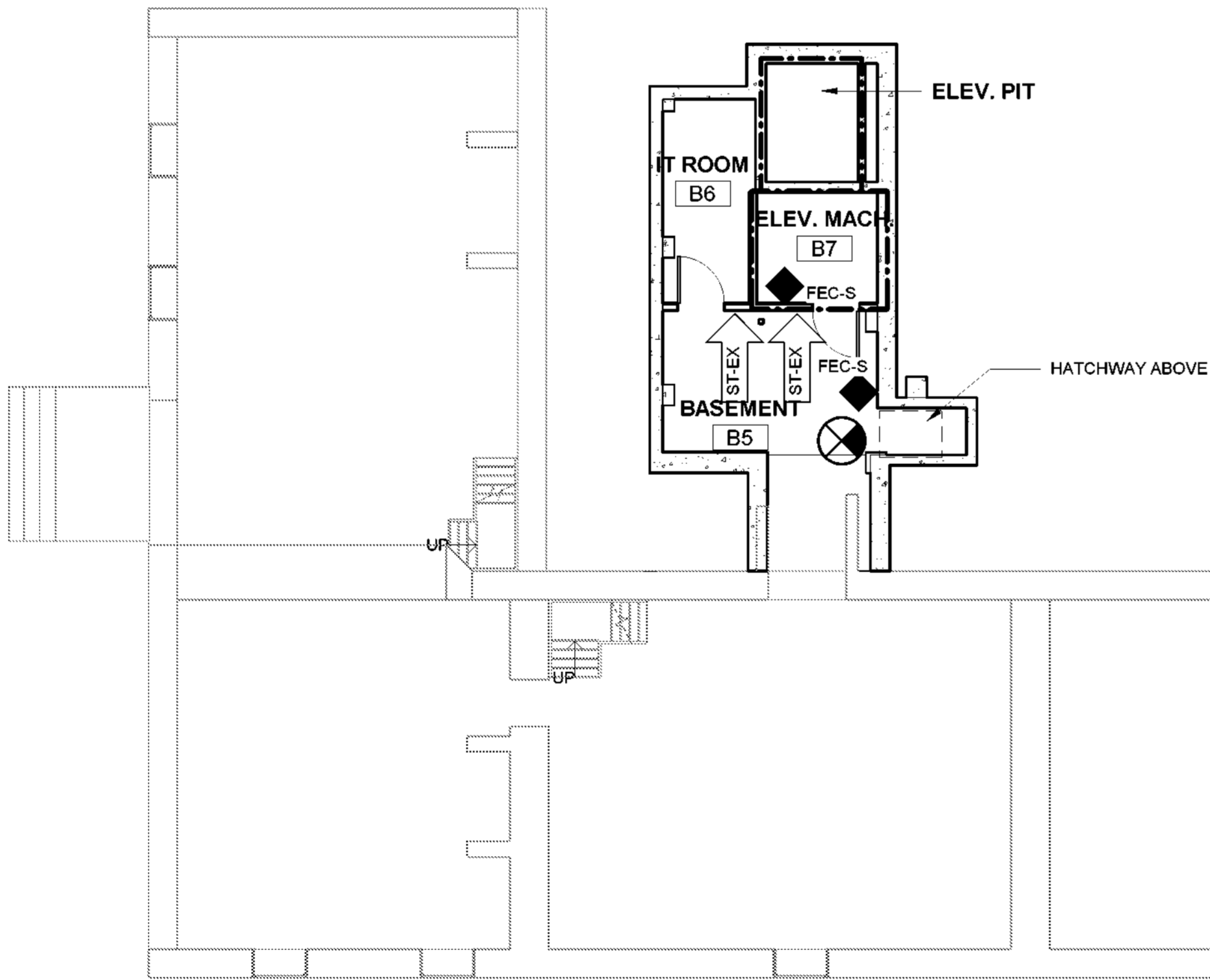


H
G
F
E
D
C
B
A
6/4/2021 8:20:00 AM



1 ATTIC FLOOR PLAN
1/8" = 1'-0"



2 BASEMENT LIFE SAFETY PLAN
1/8" = 1'-0"

GENERAL NOTES:

1. REFER TO ELECT. DWGS. FOR EXIT SIGNAGE LOCATIONS.
2. PROJECT WILL BE EQUIPPED WITH EMERGENCY LIGHTING. REF. ELECT. DWGS. FOR LOCATIONS.
3. PROJECT WILL BE EQUIPPED WITH SMOKE AND FIRE DETECTION SYSTEM. REF. TO ELECT. DWGS. FOR LOCATIONS.
4. FIRE EXTINGUISHERS REQUIRED BY CODE TO BE PLACED WITH 75' TRAVEL DISTANCE WITHIN BUILDING (AS SHOWN)

DRAWING LEGEND

- -- INDICATES EGRESS PATH AND DISTANCE TO EXITS
- -- INDICATED 2-HR FIRE BARRIER
- | | |
|------|----|
| EXIT | 95 |
| | 20 |
| | 36 |
- EXIT / DOOR WIDTH
OCCUPANCY COUNT
REQUIRED WIDTH (INCHES)
ACTUAL EXIT WIDTH
- A-3
64
- USE GROUP IN SPACE
MAX OCCUPANCY
- FIRE EXTINGUISHER
CABINET - SURFACE TYPE
- FIRE EXTINGUISHER
CABINET - SEMI-RECESSED TYPE
- ST-EX
- SIGN LOCATION, SEE SPECIFICATIONS
- EXIT SIGN, DIRECTIONAL

NEW YORK
STATE OF
OPPORTUNITY.

**Parks, Recreation
and Historic Preservation**

Governor Andrew M. Cuomo

Commissioner Erik Kulesseid

Architect:
Saratoga Associates
21 Congress Street, Suite 201
Saratoga Springs, NY 12866

SARATOGA ASSOCIATES
Landscape Architects, Architects,
Engineers, and Planners, P.C.

Engineer:
Barton and Loguidice
443 Electronics Parkway
Liverpool, NY 13088

Barton & Loguidice

Exhibit Designer:
AMAZE DESIGN
PO Box 51905
Boston, MA 02205-9761

amaze DESIGN

NYS OPRHP Taconic Region
9 Old Post Rd, PO Box 308
Staatsburg, New York 12580
(845) 889-4100
Regional Director: Linda Cooper
District Manager: Garrett Jobson

Project Title:
Philipse Manor Hall State Historic Site
Construction of Elevator/Restroom
Addition, Interior and
Exterior Rehabilitation and Site
Enhancements

Project Location:
29 Warburton Ave, Yonkers, NY 10701

Key Plan

REVISIONS		
Rev No	Description	Date

Drawn By:
KET

Design By:
EDW

Checked By:
CTS

Approved By:
DFM

Date:
5/28/2021

Seal and Signature

Sheet Title:
MANOR LIFE
SAFETY PLAN

Bid Documents

Project Number:
18006.47

Drawing Number:

LS101

Sheet: