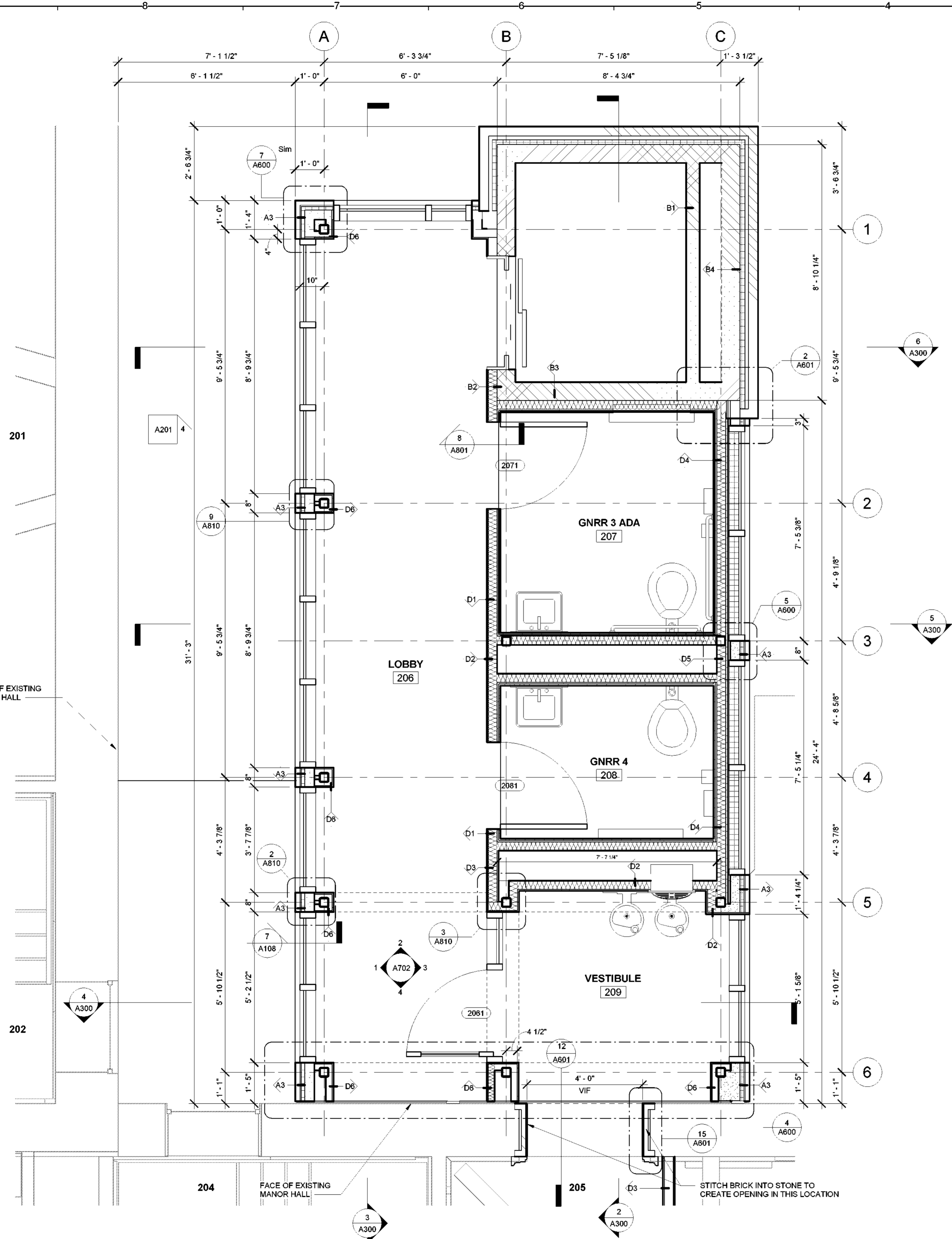


6/4/2021 2:39:51 PM

9 8 7 6 5 4 3 2 1


H G F E D C B A



1 ADDITION SECOND FLOOR PLAN  
1/2" = 1'-0"

#### GENERAL NOTES

1. REFER TO A130 FOR WALL TYPES
2. REFER TO A800 FOR WINDOW SIZES AND DETAILS
3. REFER TO A801 FOR DOOR SIZES AND DETAILS
4. REFER TO A810 FOR STOREFRONT SIZES AND DETAILS
5. REFER TO STRUCTURAL DWGS. FOR ADDITIONAL DIMENSIONS.
6. DO NOT SCALE DRAWINGS. USE FIGURED DIMENSIONS. CENTER PARTITIONS ON COLUMNS OR MULLIONS UNLESS OTHERWISE NOTED, OR USE (EQUAL / EQUAL) AND ALIGN NOTES TO LOCATE PARTITIONS. NOTIFY THE OWNERS REPRESENTATIVE OF MISSING DIMENSIONS AND DISCREPANCIES AND GET RESOLVED PRIOR TO PROCEEDING WITH THE WORK.
7. UNLESS INDICATED OTHERWISE, ALL DIMENSIONS ARE TO/FROM FACE OF STUD, FACE OF CONC., OR STRUCT. COLUMN GRIDS
8. SEE FINISH SCHEDULE AND NOTES FOR WALL BASE MATERIALS. IT IS INTENDED THAT THE FACE OF EVERY CONTINUOUS PARTITION BE FLUSH WITHOUT OFFSETS. CHANGES IN PARTITION THICKNESS SHALL OCCUR AT CORNERS OR OTHER FEATURES WHICH INTERRUPT THE PLANES OF THE PARTITION.
9. THE DISTANCE FROM THE CLEAR FACE OF DOOR JAMB TO ADJACENT PERPENDICULAR WALL SHALL BE 6" IN STUD WALL CONSTRUCTION, UNO.
10. PROVIDE CONTINUOUS CONTROL JOINTS AT 30' - 0" O.C. MAXIMUM VERTICAL AND HORIZONTAL IN ALL WALLS AND CEILINGS (UNO). COORDINATE ACTUAL LOCATIONS IN THE FIELD WITH DIRECTOR'S REPRESENTATIVE.
11. TELEPHONE, ELECTIC AND COMMUNICATIONS CLOSETS TO HAVE PTD. 3/4" AC FIRE TREATED PLYWOOD BACK BOARDS INSTALLED. COORDINATE WITH ELECTRIC DRAWINGS FOR LOCATIONS.
12. REFER TO DOOR SCHEDULE AND FINISH SCHEDULE WITHIN PROJECT SPECIFICATIONS FOR ADDITIONAL INFORMATION RELATED TO DOORS AND ROOM FINISHES.



**NEW YORK**  
STATE OF  
OPPORTUNITY.

**Parks, Recreation  
and Historic Preservation**

Governor Andrew M. Cuomo

Commissioner Erik Kulesseid

**Architect:**  
Saratoga Associates  
21 Congress Street, Suite 201  
Saratoga Springs, NY 12866

**SARATOGA  
ASSOCIATES**  
Landscape Architects, Architects,  
Engineers, and Planners, P.C.

**Engineer:**  
Barton and Loguidice  
443 Electronics Parkway  
Liverpool, NY 13088

**Barton  
&Loguidice**

**Exhibit Designer:**  
AMAZE DESIGN  
PO Box 51905  
Boston, MA 02205-9761

**amaze DESIGN**

**NYS OPRHP Taconic Region**  
9 Old Post Rd, PO Box 308  
Staatsburg, New York 12580  
(845) 889-4100  
Regional Director: Linda Cooper  
District Manager: Garrett Jobson

**Project Title:**  
Philipse Manor Hall State Historic Site  
Construction of Elevator/Restroom  
Addition, Interior and  
Exterior Rehabilitation and Site  
Enhancements

**Project Location:**  
29 Warburton Ave, Yonkers, NY 10701

**Key Plan**

REVISIONS		
Rev No	Description	Date

Drawn By:  
**KET**


Design By:  
**EDW**

Checked By:  
**CTS**

Approved By:  
**DFM**

Date:  
**5/28/2021**

Seal and Signature



**Sheet Title:**  
ADDITION  
SECOND FLOOR

**Bid Documents**

Drawing Number:  
**A106**

Project Number:  
**18006.47**

Sheet: