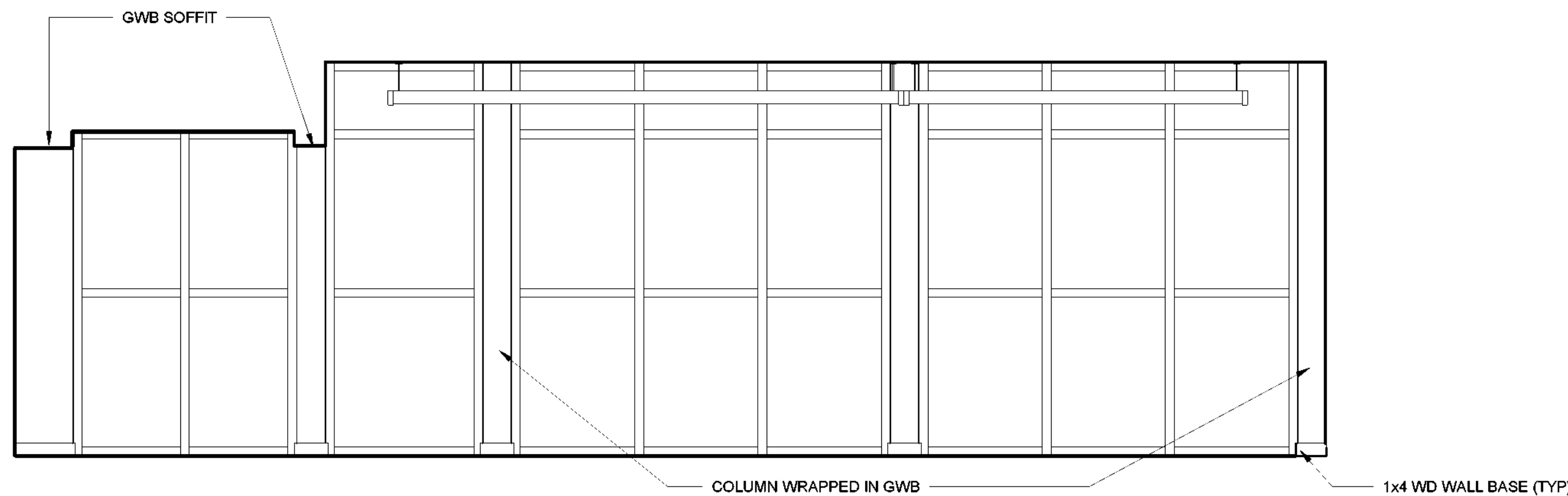
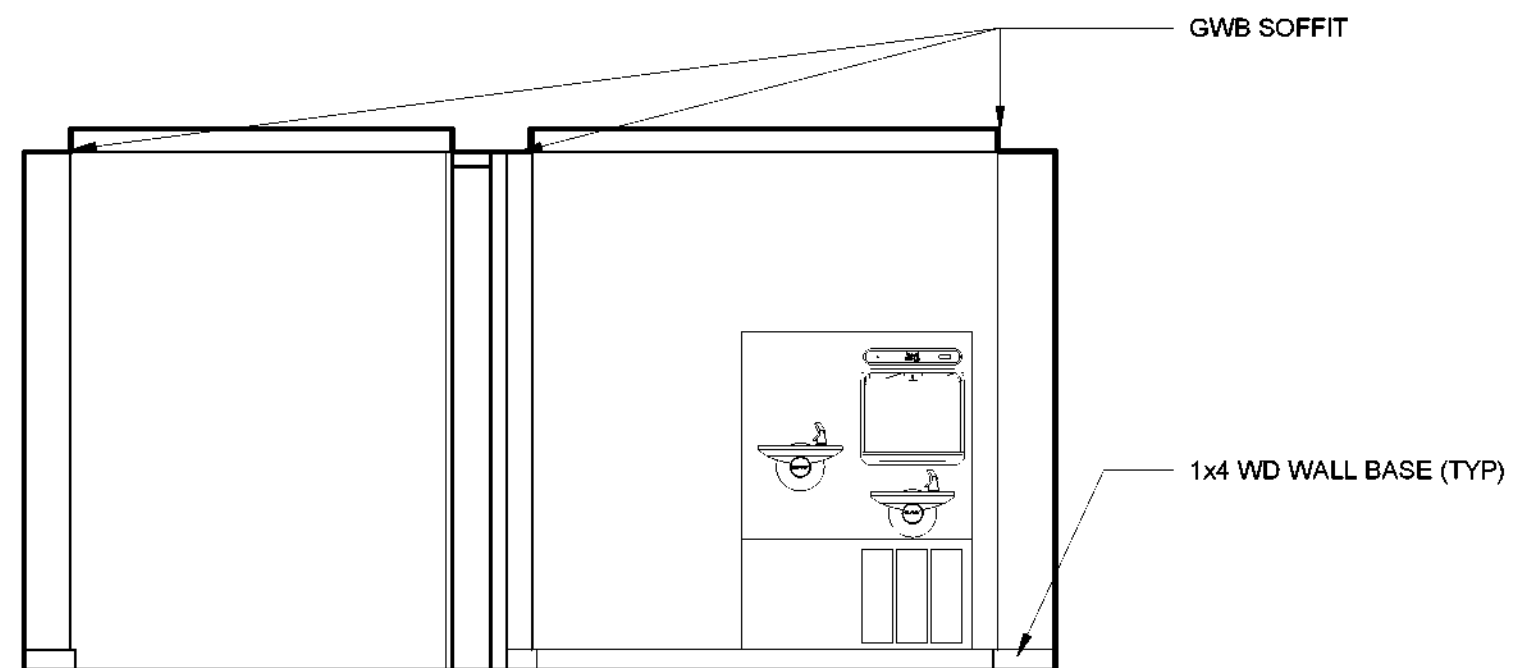


6/4/2021 8:18:12 AM

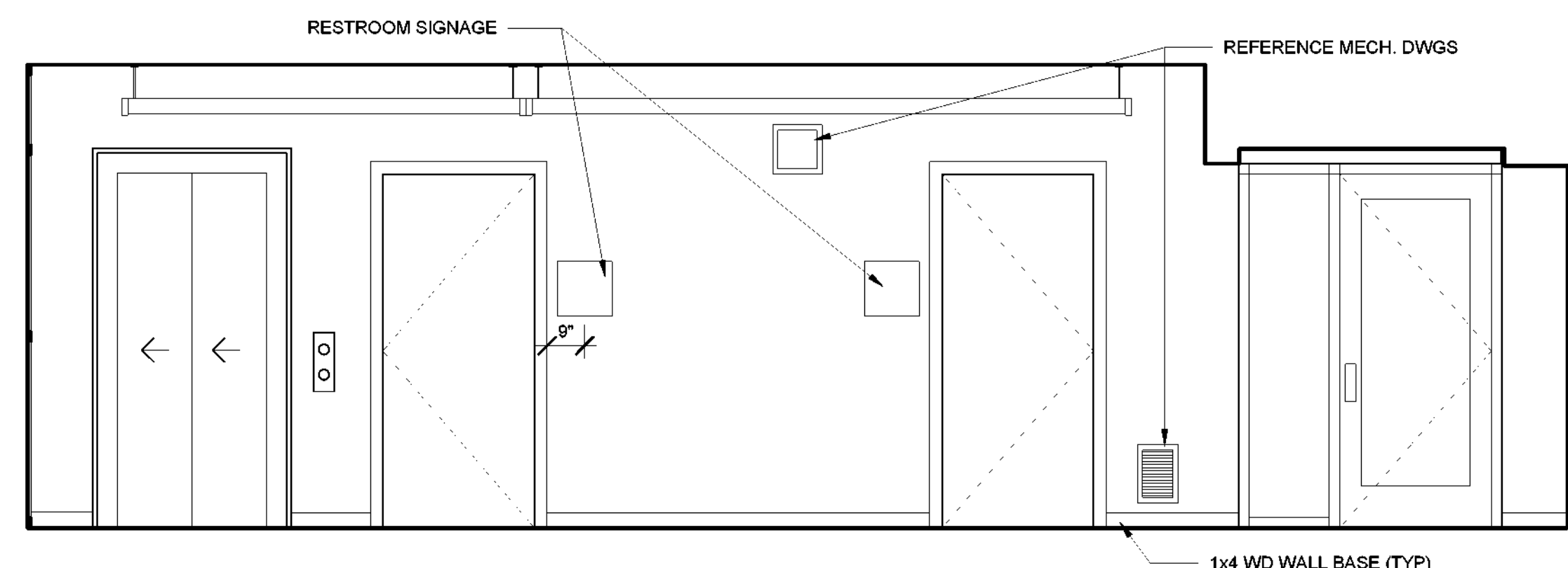
H
G
F
E
D
C
B
A



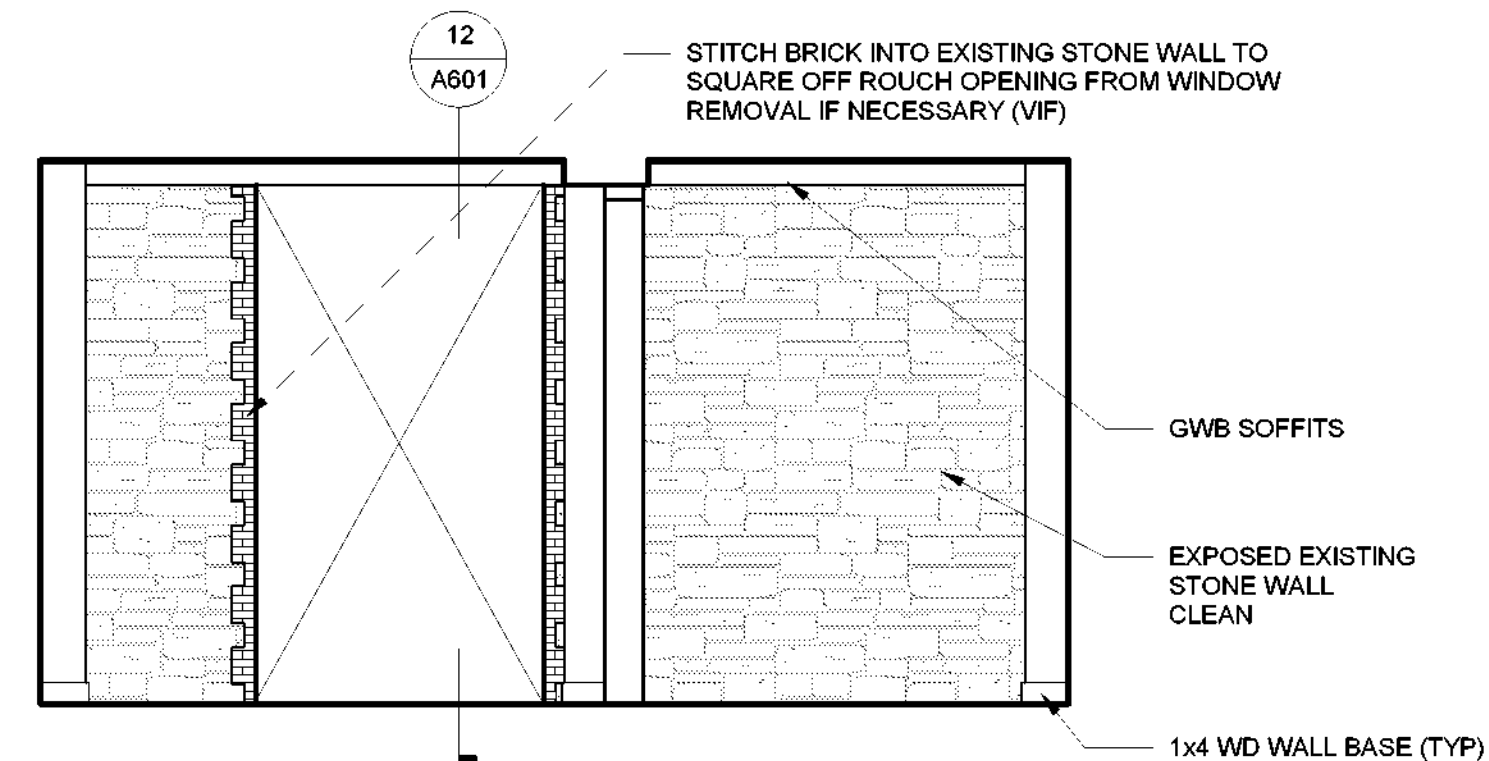
1 ADDITION 2ND FLOOR LOBBY SOUTHELEVATION
3/8" = 1'-0"



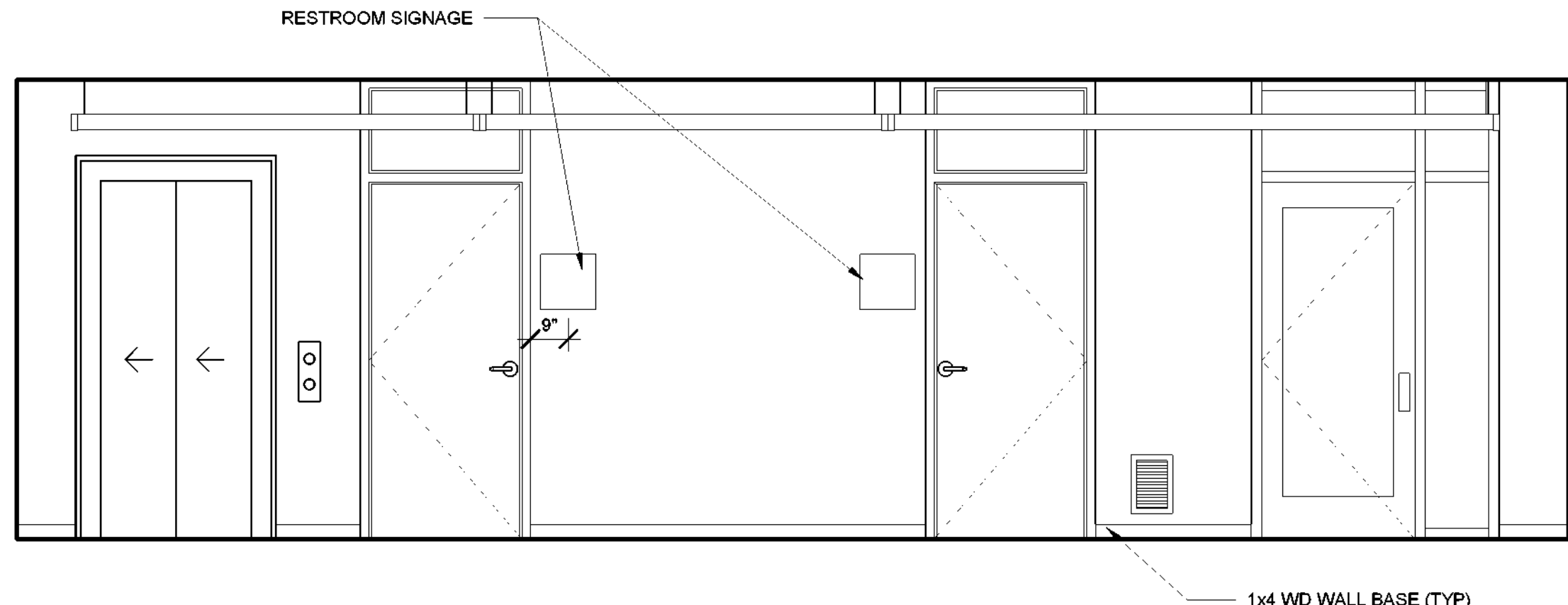
2 ADDITION 2ND FLOOR WEST ELEVATION
3/8" = 1'-0"



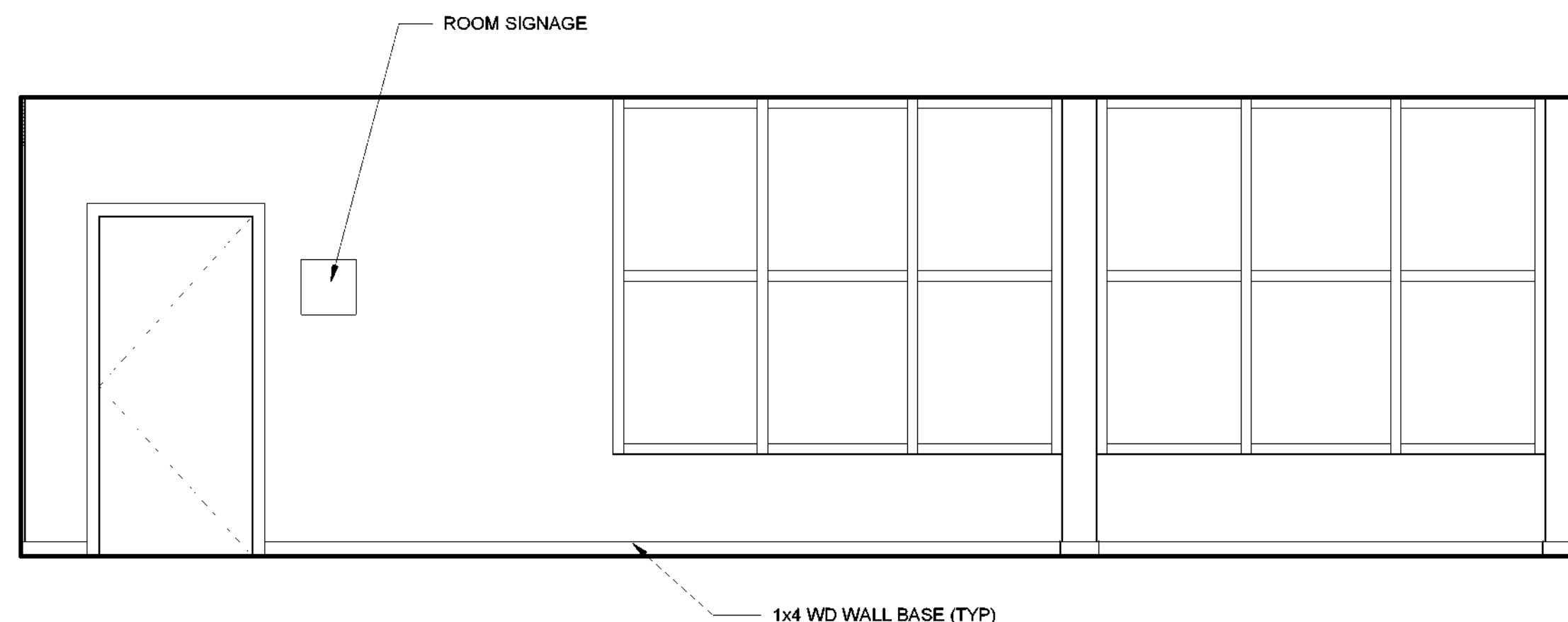
3 ADDITION 2ND FLOOR LOBBY NORTH ELEVATION
3/8" = 1'-0"




4 ADDITION 2ND FLOOR EAST ELEVATION
3/8" = 1'-0"



5 ADDITION 1ST FLOOR LOBBY NORTH ELEVATION
3/8" = 1'-0"



6 ADDITION 1ST FLOOR LOBBY SOUTH ELEVATION
3/8" = 1'-0"



NEW YORK
STATE OF
OPPORTUNITY.

**Parks, Recreation
and Historic Preservation**

Governor Andrew M. Cuomo

Commissioner Erik Kulesseid

Architect:
Saratoga Associates
21 Congress Street, Suite 201
Saratoga Springs, NY 12866

**SARATOGA
ASSOCIATES**
Landscape Architects, Architects,
Engineers, and Planners, P.C.

Engineer:
Barton and Loguidice
443 Electronics Parkway
Liverpool, NY 13088

**Barton
&Loguidice**

Exhibit Designer:
AMAZE DESIGN
PO Box 51905
Boston, MA 02205-9761

amaze DESIGN

NYS OPRHP Taconic Region
9 Old Post Rd, PO Box 308
Staatsburg, New York 12580
(845) 889-4100
Regional Director: Linda Cooper
District Manager: Garrett Jobson

Project Title:
Philipse Manor Hall State Historic Site
Construction of Elevator/Restroom
Addition, Interior and
Exterior Rehabilitation and Site
Enhancements

Project Location:
29 Warburton Ave, Yonkers, NY 10701

Key Plan

| REVISIONS | | |
|-----------|-------------|------|
| Rev No | Description | Date |
| | | |
| | | |
| | | |
| | | |
| | | |
| | | |
| | | |
| | | |

Drawn By:
EDW


Design By:
EDW

Checked By:
CTS

Approved By:
DFM

Date:
5/28/2021

Seal and Signature



Sheet Title:
ADDITION
INTERIOR
ELEVATIONS

Bid Documents
Project Number:
18006.47

Drawing Number:

A702

Sheet: