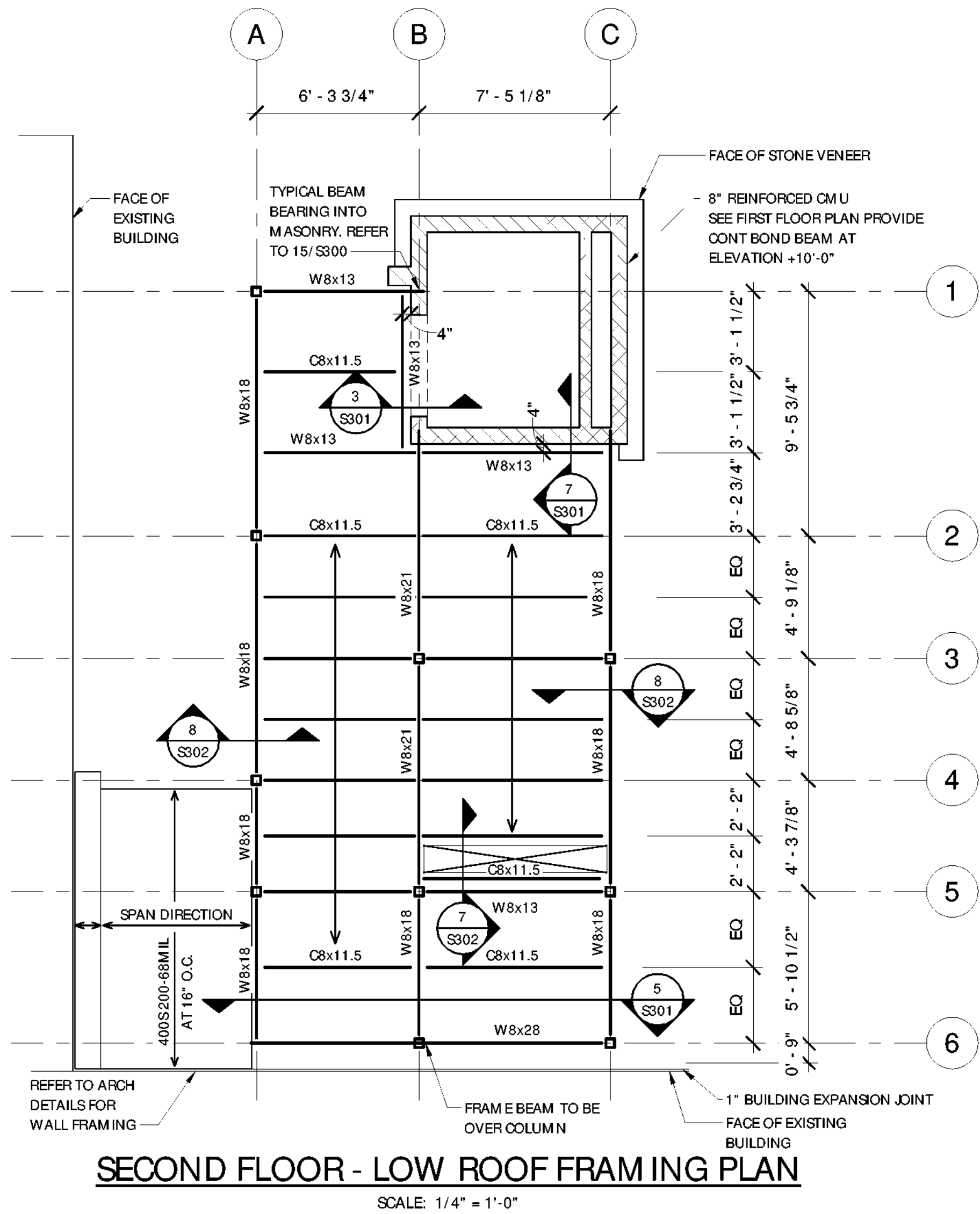
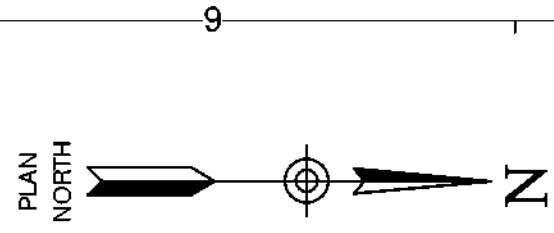
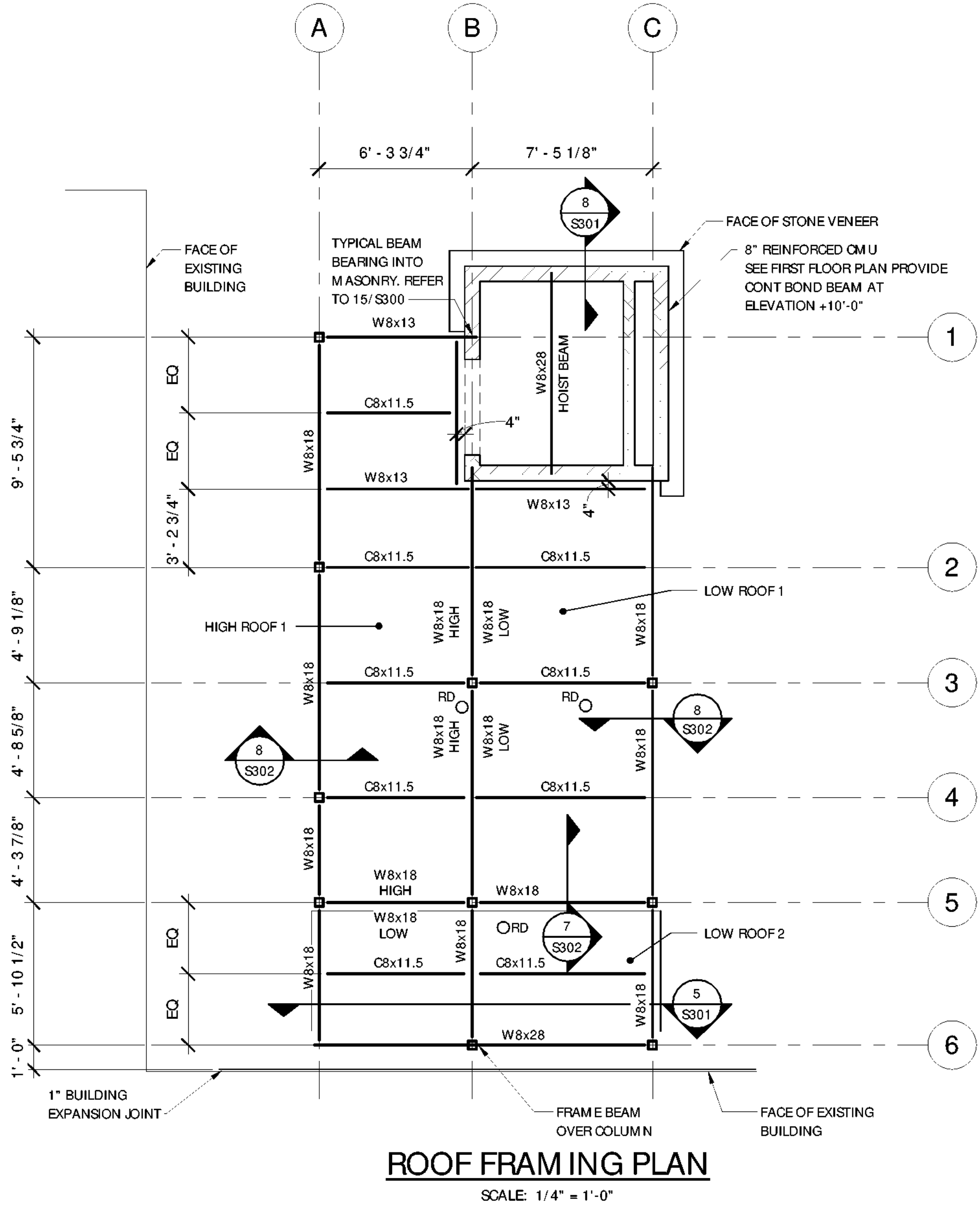


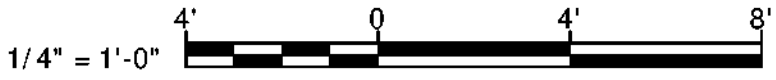
5/28/2021 11:42:31 AM




- SECOND FLOOR FRAMING NOTES:**
1. REFERENCE ELEVATION= 0'-0" = FIRST FLOOR ELEVATION
  2. TOP OF STEEL / BOTTOM OF DECK = +10'-9 1/2"
  3. REFER TO S-001 FOR TYPICAL STEEL FRAMING NOTES
  4. FLOOR DECK IS 1.5C24 FORM DECK FASTENED TO SUPPORTS IN 33/4 PATTERN WITH #12 TEK SCREWS. PROVIDE #10 TEK SIDELAP FASTENERS AT 8 INCHES ON CENTER



- ROOF FRAMING NOTES:**
1. REFERENCE ELEVATION= 0'-0" = FIRST FLOOR ELEVATION
  2. LOW ROOF 1 TOP OF STEEL / BOTTOM OF DECK = +19'-6 1/2"
  3. LOW ROOF 2 TOP OF STEEL / BOTTOM OF DECK = +19'-3 1/2"
  4. HIGH ROOF TOP OF STEEL / BOTTOM OF DECK = +21'-8 1/2"
  5. TOP OF STEEL / ELEVATOR HOIST BEAM = 23'-8 1/2"
  6. ELEVATOR ROOF TOP OF CONCRETE MASONRY = +24'-0"
  7. REFER TO S-001 FOR TYPICAL STEEL FRAMING NOTES
  8. STEEL ROOF DECK BEARING ON STEEL SUPPORTS SHALL BE 1 1/2" DEEP - 22 GAGE TYPE B WIDE RIB GALVANIZED DECK FASTENED TO STEEL SUPPORTS IN 36/7 PATTERN WITH #12 TEK SCREWS. PROVIDE #10 TEK SIDELAP FASTENERS AT 12 INCHES ON CENTER MAXIMUM.
  9. STEEL ROOF DECK BEARING ON CONCRETE MASONRY ELEVATOR SHAFT SHALL BE 3" DEEP - 18 GAGE TYPE N GALVANIZED DECK WELDED TO CONTINUOUS STEEL EMBED WITH 5/8" DIAMETER PUDDLE WELDS AT 12" ON CENTER MAXIMUM. PROVIDE #10 TEK SIDELAP FASTENERS AT 12 INCHES ON CENTER MAXIMUM.
  10. "RD" DENOTES ROOF DRAIN.





**Parks, Recreation  
and Historic Preservation**

Governor Andrew M. CuomoCommissioner Erik Kulesseid

**Architect:**  
Saratoga Associates  
21 Congress Street, Suite 201  
Saratoga Springs, NY 12866

**Engineer:**  
Barton and Loguidice  
443 Electronics Parkway  
Liverpool, NY 13088

**Exhibit Designer:**  
AMAZE DESIGN  
PO Box 51905  
Boston, MA 02205-9761

**SARATOGA  
ASSOCIATES**  
Landscape Architects, Architects,  
Engineers, and Planners, P.C.

**Barton  
&Loguidice**

**amaze DESIGN**

**NYS OPRHP Taconic Region**  
9 Old Post Rd, PO Box 308  
Staatsburg, New York 12580  
(845) 889-4100  
Regional Director: Linda Cooper  
District Manager: Garrett Jobson

**Project Title:**  
Philipse Manor Hall State Historic Site  
Construction of Elevator/Restroom  
Addition, Interior and Exterior  
Rehabilitation and Site Enhancements

**Project Location:**  
29 Warburton Ave, Yonkers, NY, 10701

**Key Plan**

REVISIONS		
Rev No	Description	Date

Drawn By:  
**RAD**


Design By:  
**GJM**

Checked By:  
**MCF**

Approved By:  
**MCF**

Date:  
**5/28/2021**

Seal and Signature



**Sheet Title:**  
SECOND FLOOR  
FRAMING AND  
ROOF FRAMING  
PLANS

**Bid Documents**

Project Number:  
**1299.029.001**

Sheet:

**S102**