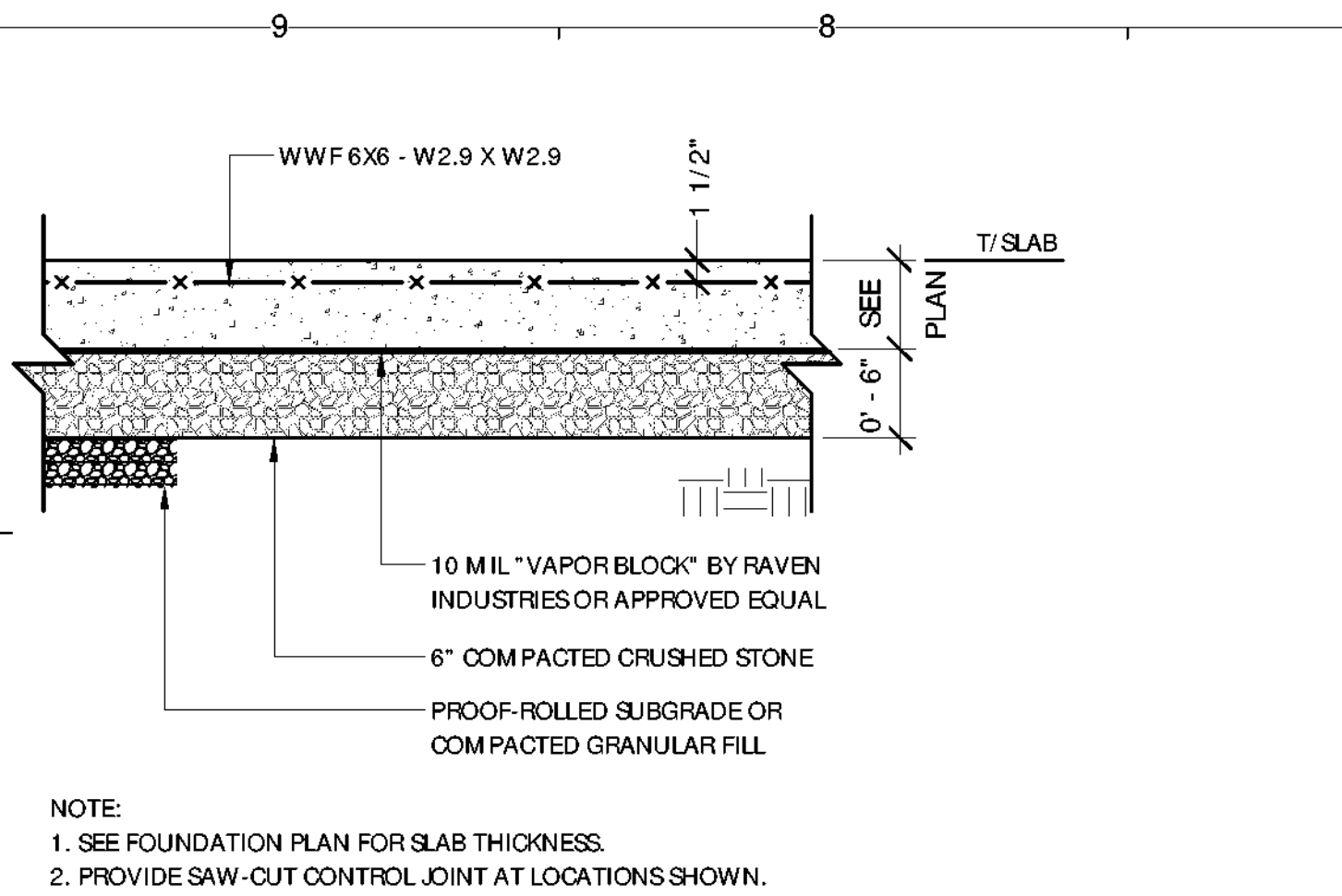
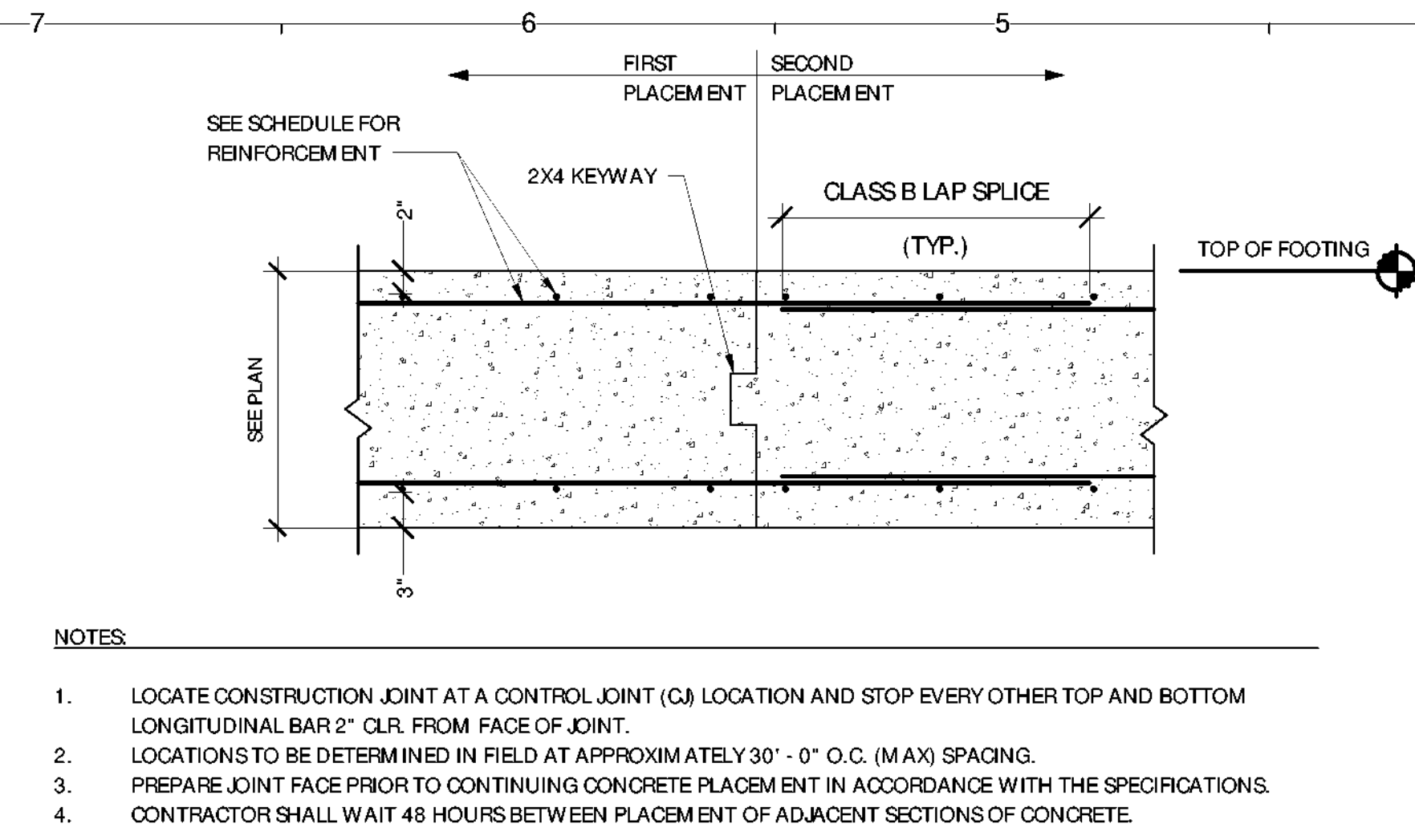


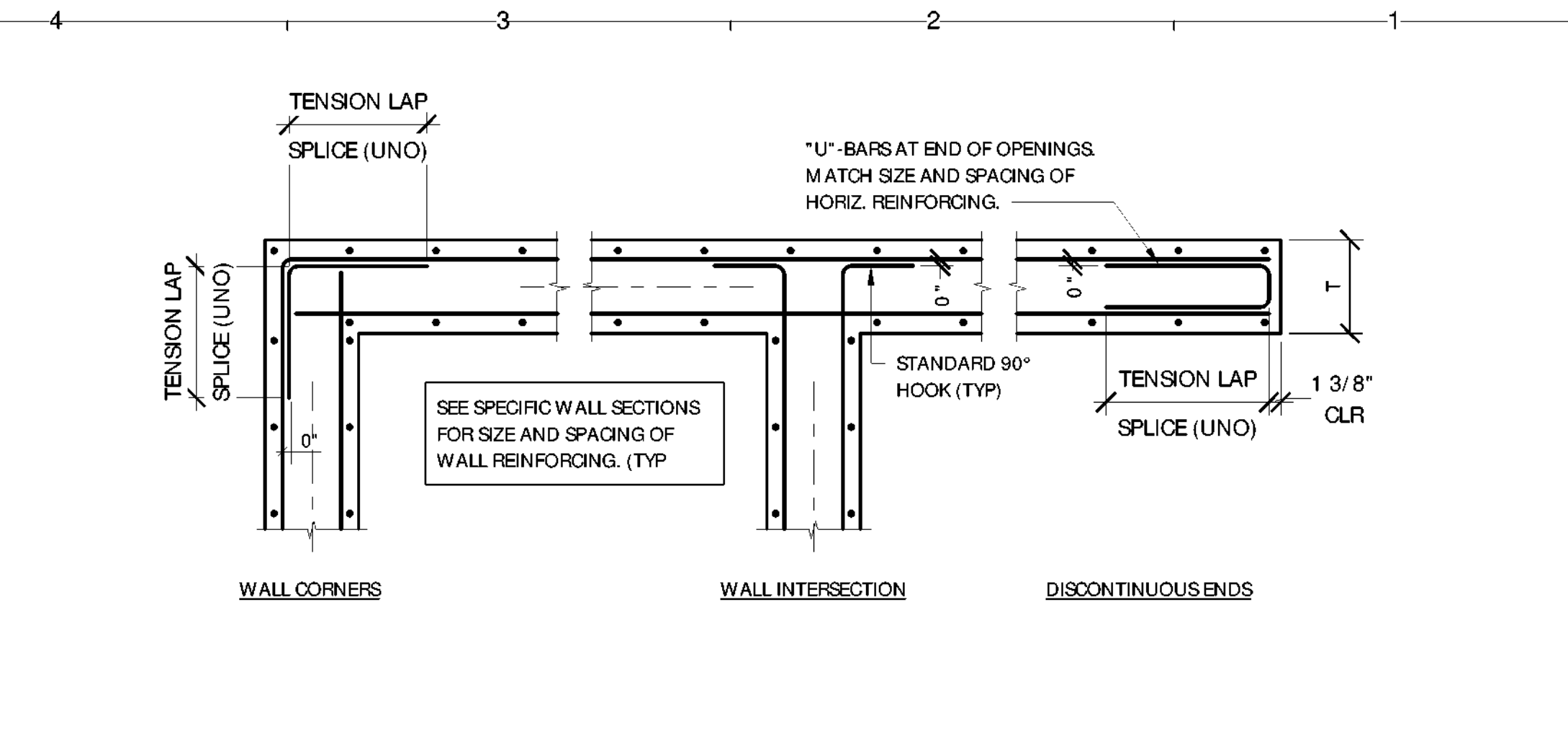
H
G
F
E
D
C
B
A
5/28/2021 11:42:33 AM



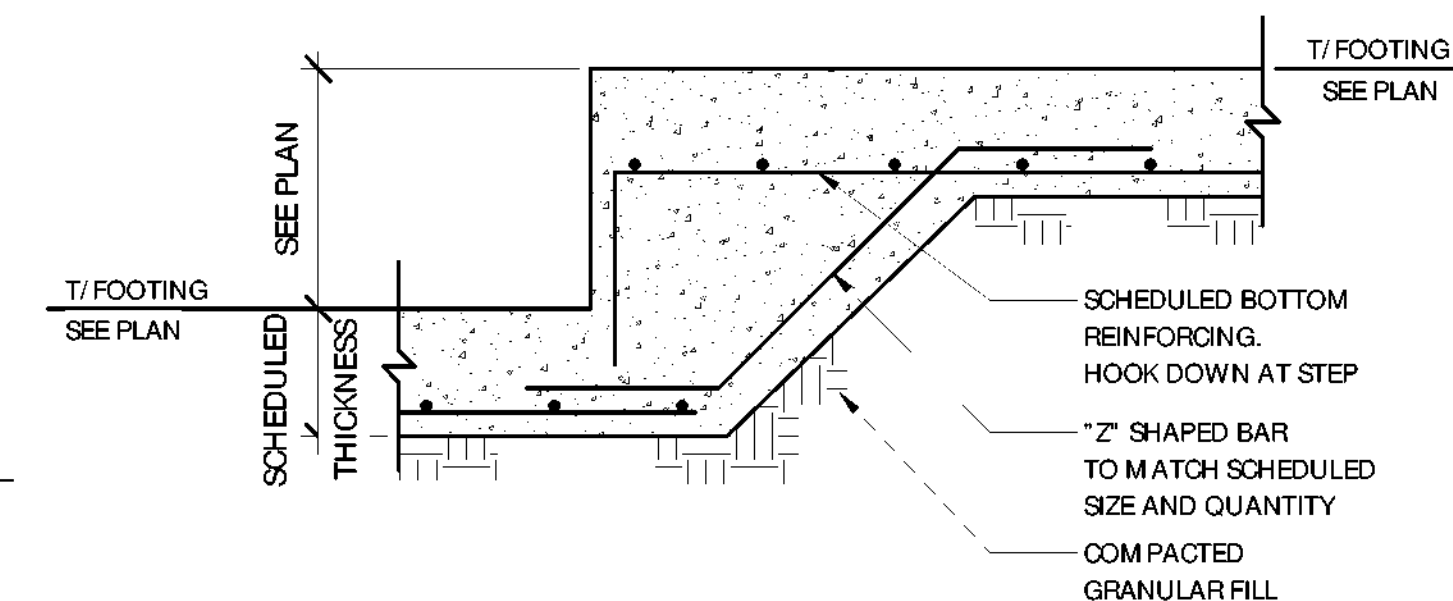
1 TYP. SLAB ON GRADE DETAIL
S300 SCALE: NTS



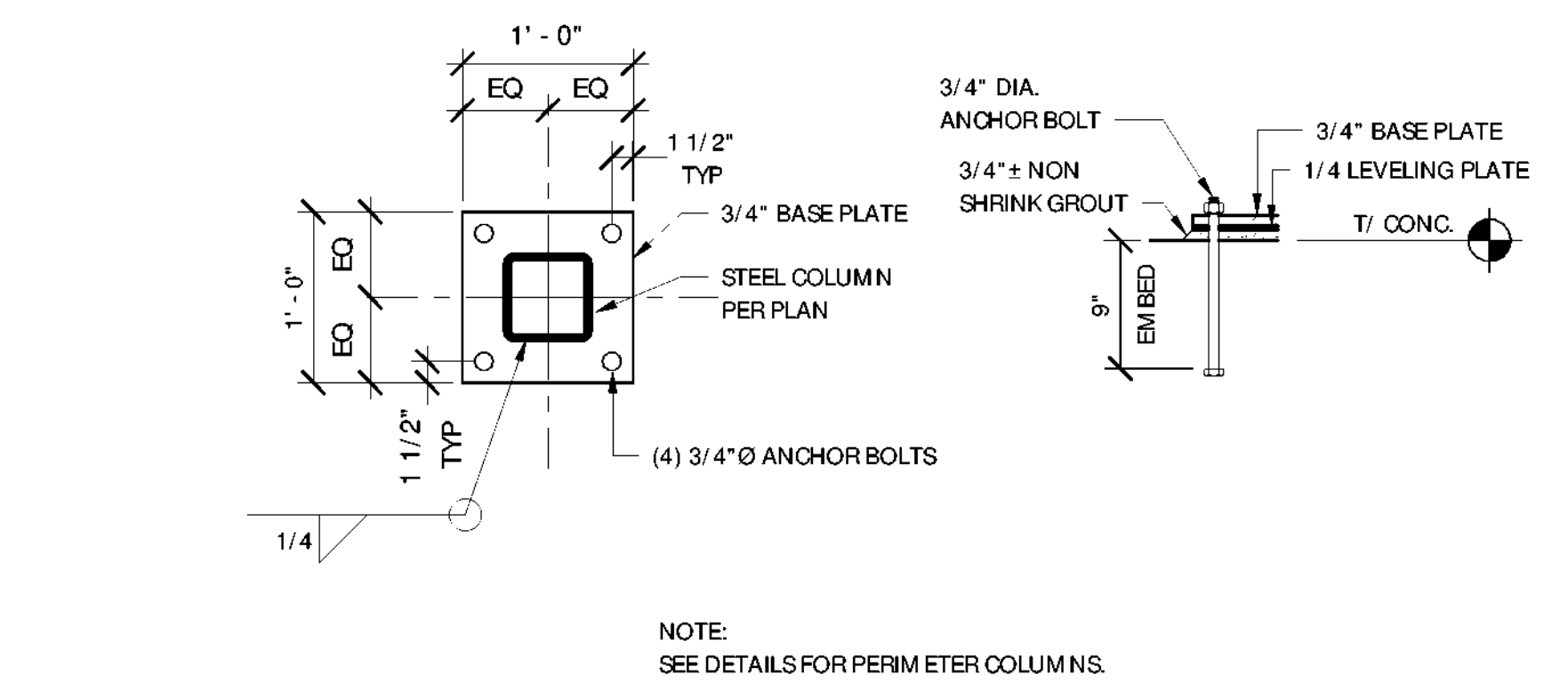
2 TYP. FOOTING CONSTRUCTION JOINT
S300 SCALE: 1" = 1'-0"



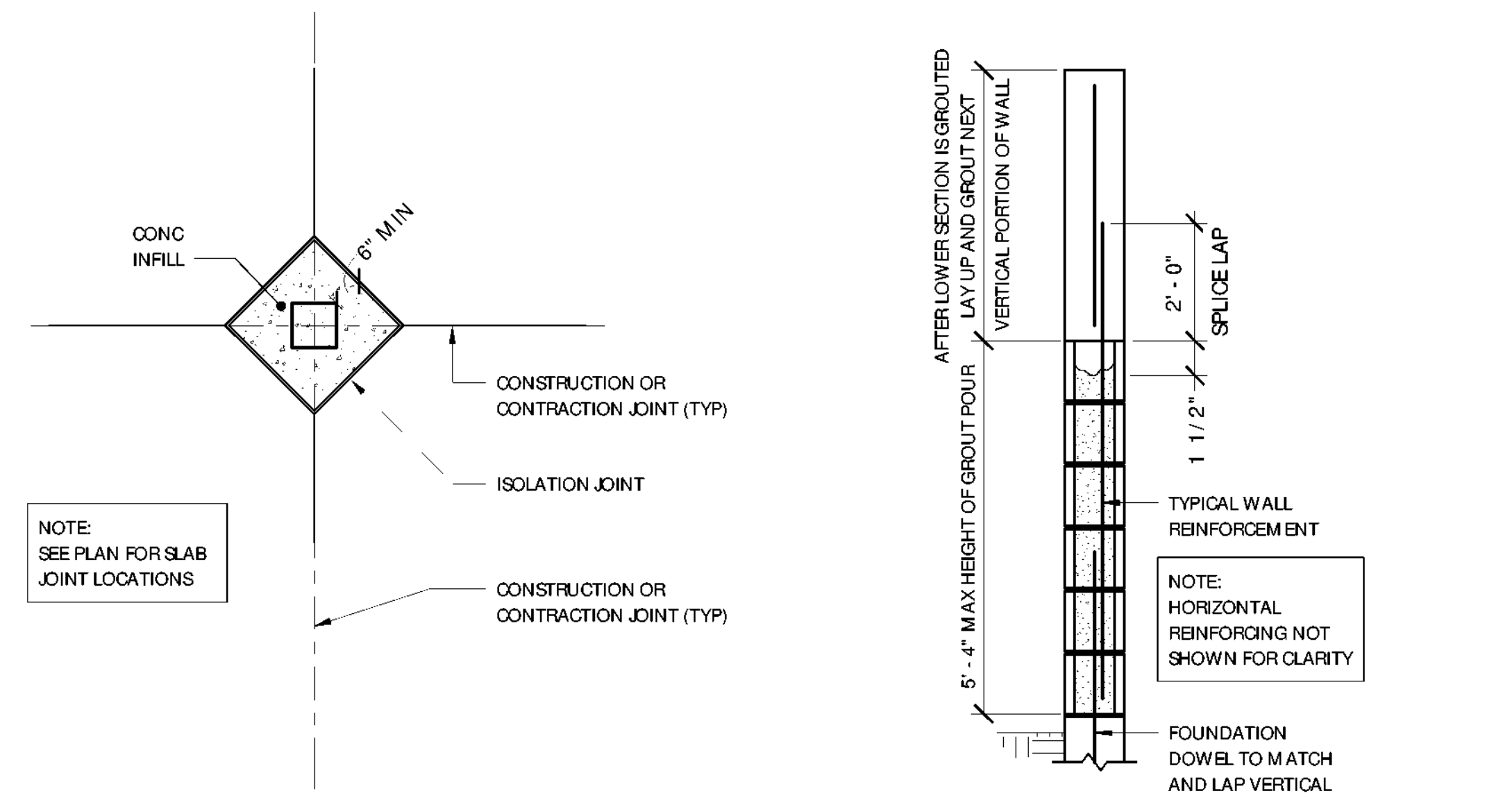
3 TYP. CONCRETE WALL REINFORCING DETAILS
S300 SCALE: NTS



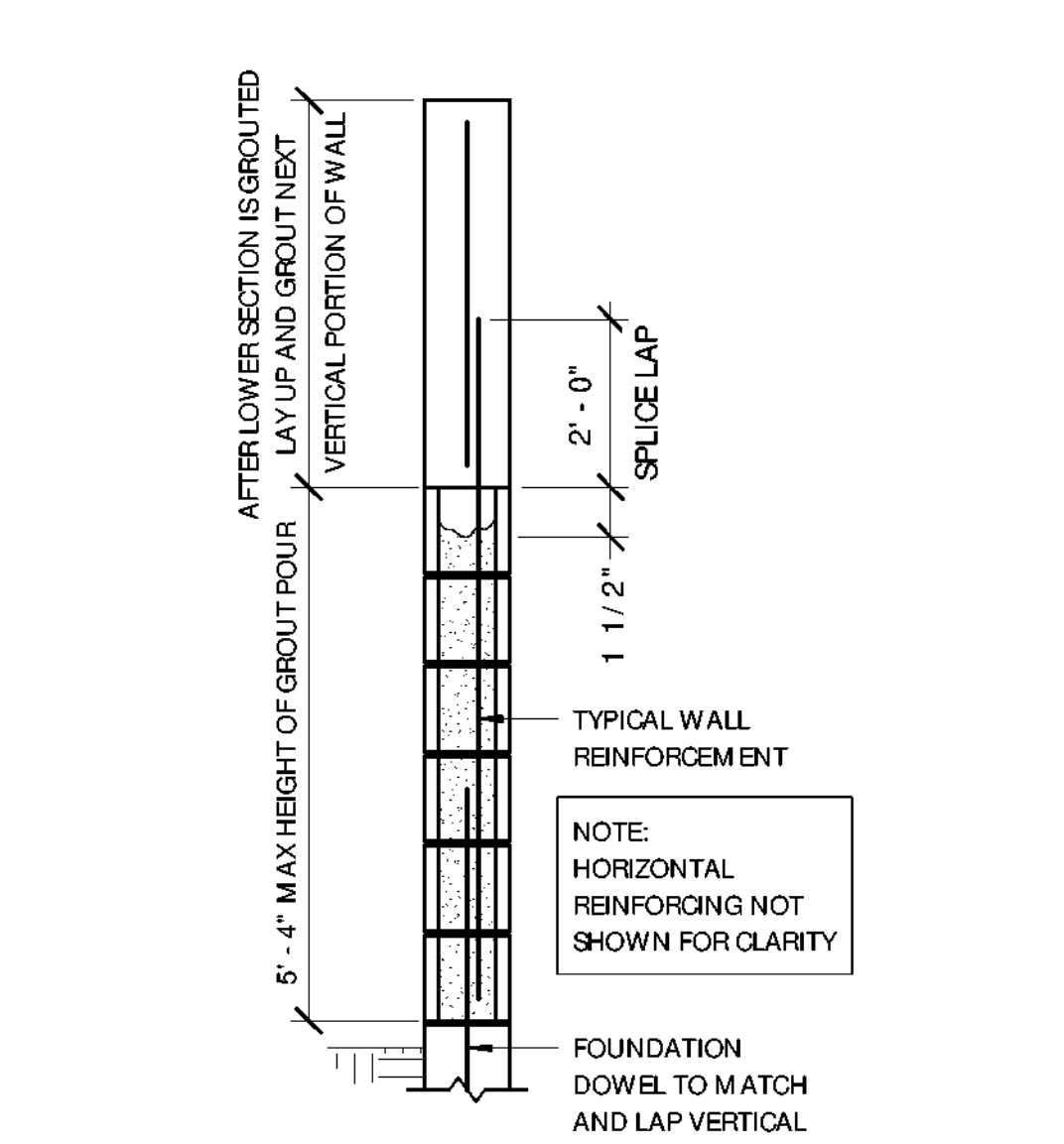
4 FOOTING STEP DETAIL
S300 SCALE: NTS



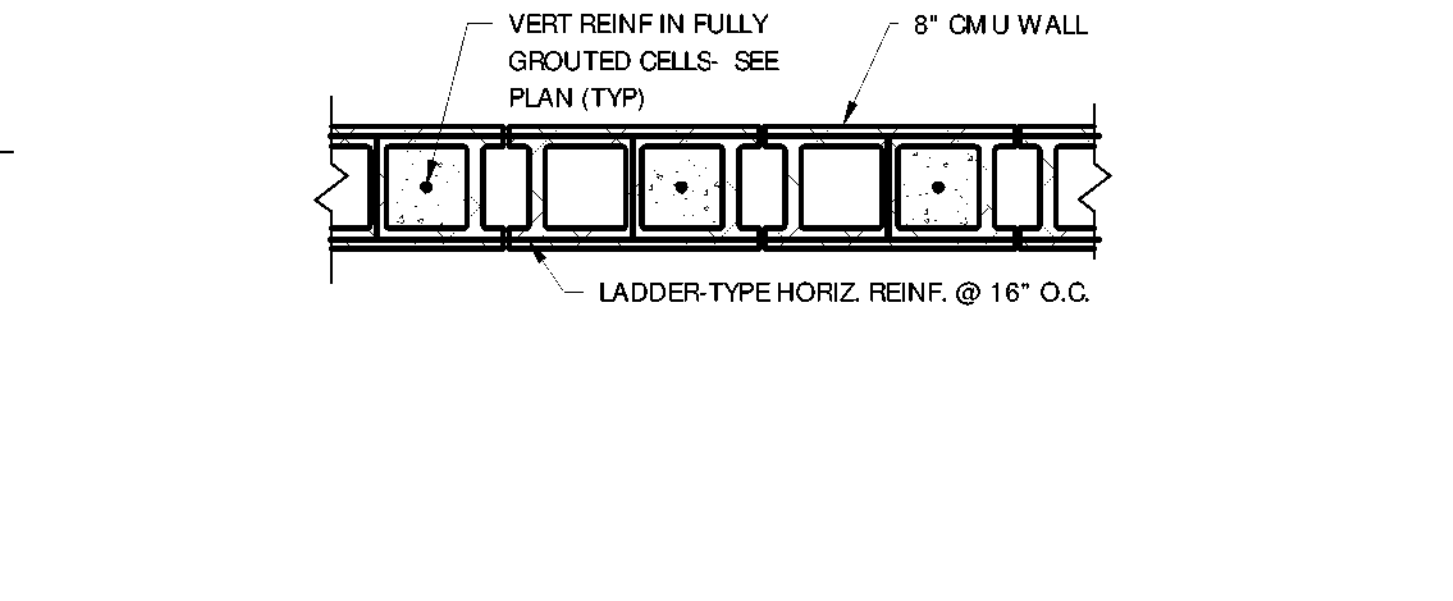
5 TYPICAL INTERIOR HSS COLUMN BASE PLATE
S300 SCALE: NTS



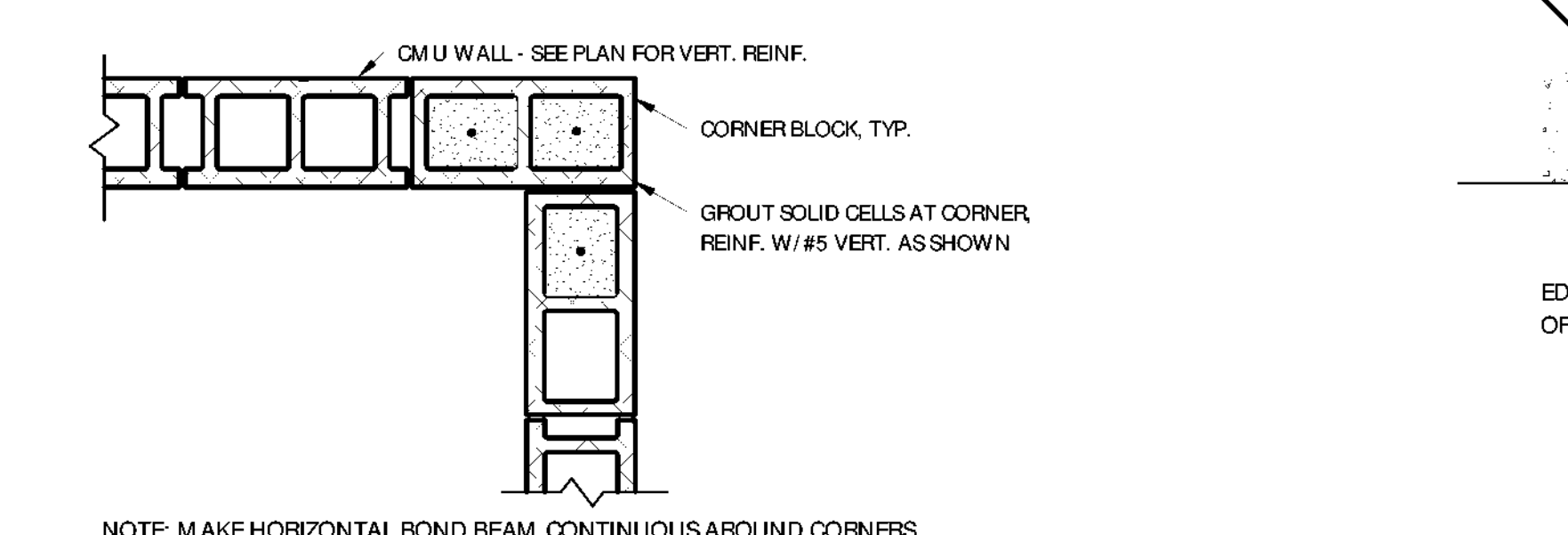
6 TYP. S.O.G. JOINTS AT COLUMNS
S300 SCALE: NTS



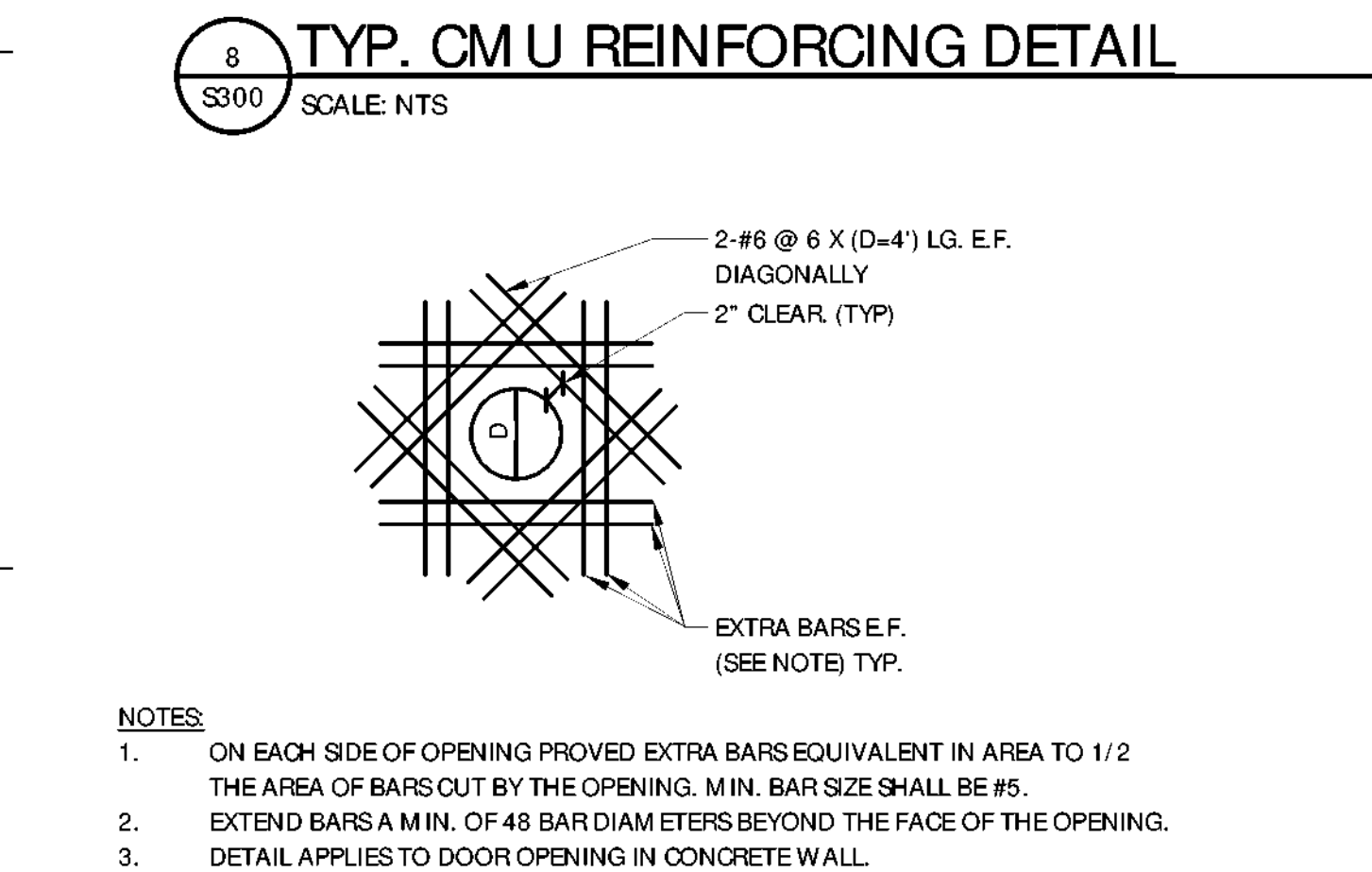
7 TYP. CM U GROUTING SEQUENCE
S300 SCALE: NTS



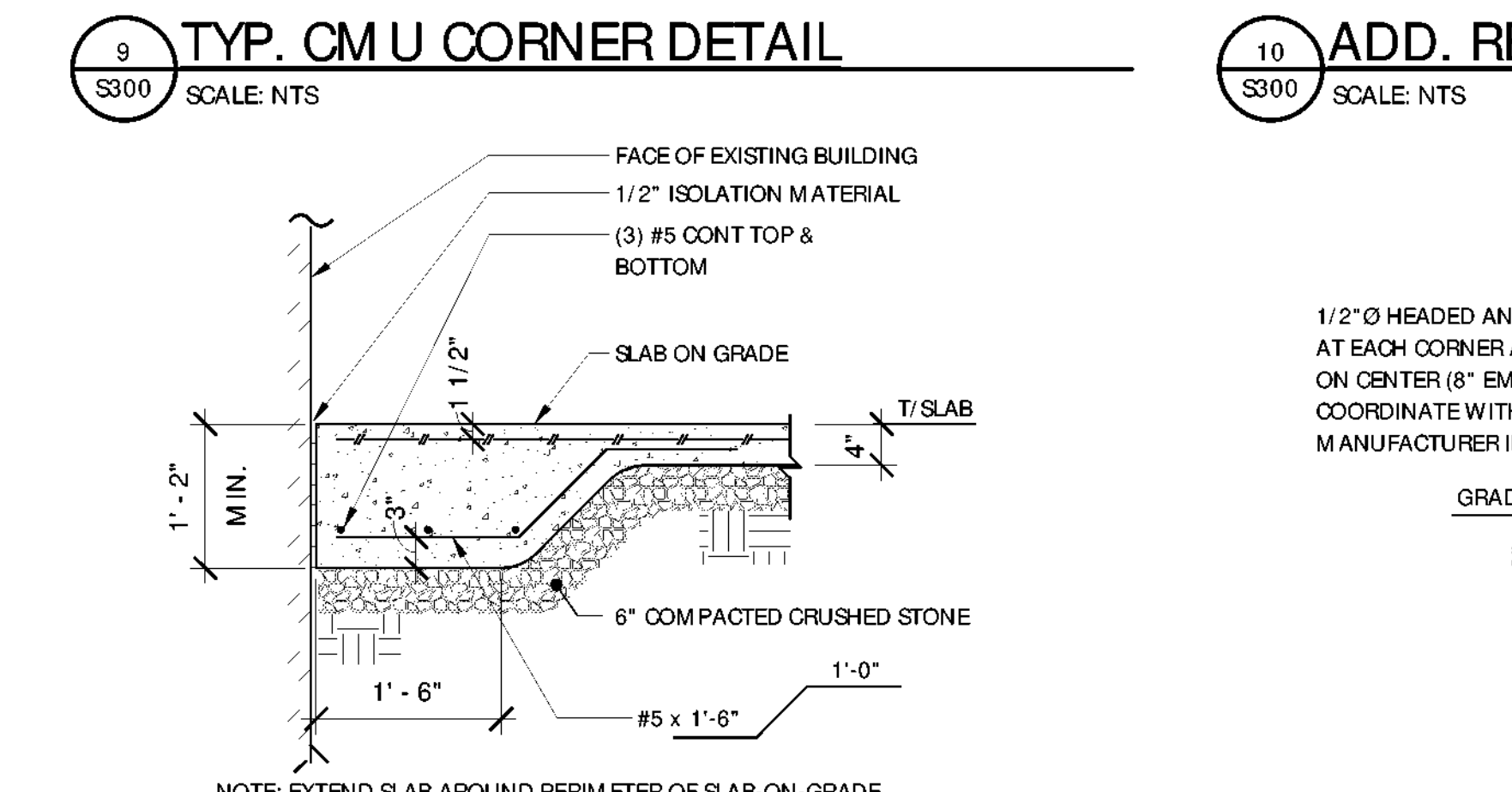
8 TYP. CM U REINFORCING DETAIL
S300 SCALE: NTS



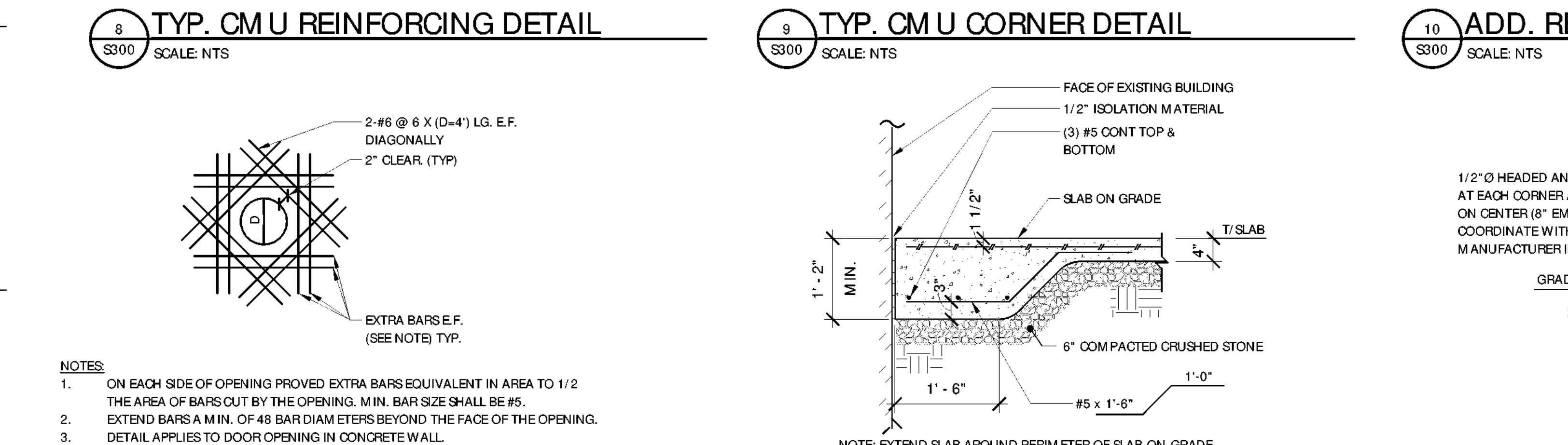
9 TYP. CM U CORNER DETAIL
S300 SCALE: NTS



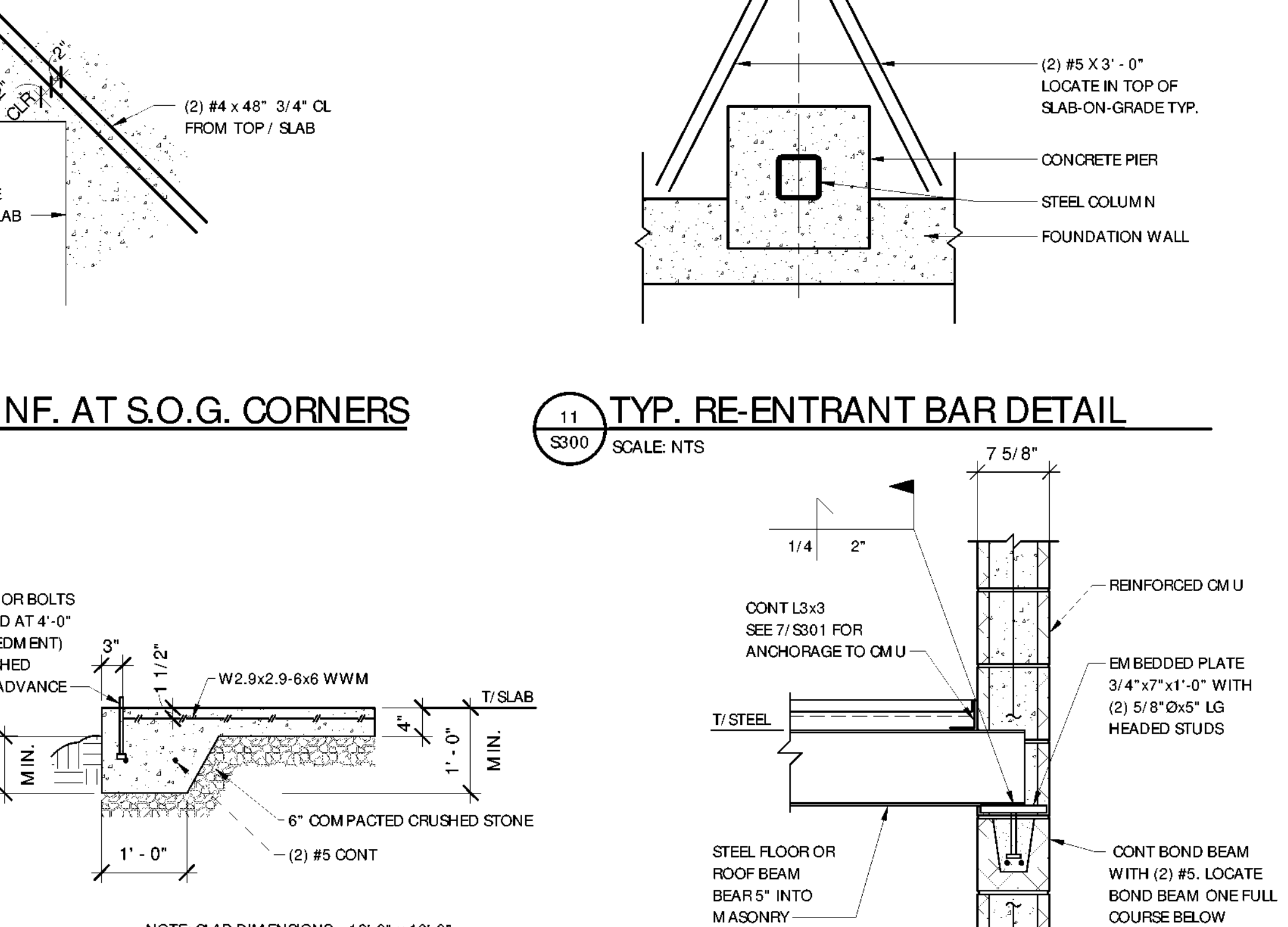
12 TYP. REINF. AROUND WALL OPENING DETAIL
S300 SCALE: NTS



13 BUILDING SLAB-ON-GRADE EDGE DETAIL
S300 SCALE: 3/4" = 1'-0"



10 ADD. REINF. AT S.O.G. CORNERS
S300 SCALE: NTS



11 TYP. RE-ENTRANT BAR DETAIL
S300 SCALE: NTS



14 STORAGE SHED SLAB-ON-GRADE EDGE DETAIL
S300 SCALE: 3/4" = 1'-0"



15 STEEL BEAM BEARING INTO CM U
S300 SCALE: 1" = 1'-0"

NEW YORK
STATE OF OPPORTUNITY.

**Parks, Recreation
and Historic Preservation**

Governor Andrew M. Cuomo

Commissioner Erik Kulesseid

Architect:
Saratoga Associates
21 Congress Street, Suite 201
Saratoga Springs, NY 12866

Engineer:
Barton and Loguidice
443 Electronics Parkway
Liverpool, NY 13088

Exhibit Designer:
AMAZE DESIGN
PO Box 51905
Boston, MA 02205-9761

SARATOGA ASSOCIATES
Landscape Architects, Architects,
Engineers, and Planners, P.C.

Barton & Loguidice

amaze DESIGN

NYS OPRHP Taconic Region
9 Old Post Rd, PO Box 308
Staatsburg, New York 12580
(845) 889-4100
Regional Director: Linda Cooper
District Manager: Garrett Jobson

Project Title:
Philipse Manor Hall State Historic Site
Construction of Elevator/Restroom
Addition, Interior and Exterior
Rehabilitation and Site Enhancements

Project Location:
29 Warburton Ave, Yonkers, NY, 10701

Key Plan

Rev No	Description	Date

Drawn By:
RAD

Design By:
GJM

Checked By:
MCF

Approved By:
MCF

Date:
5/28/2021

Seal and Signature

FOUNDATION DETAILS

Bid Documents

Project Number:
1299.029.001

Drawing Number:

S300

Sheet: