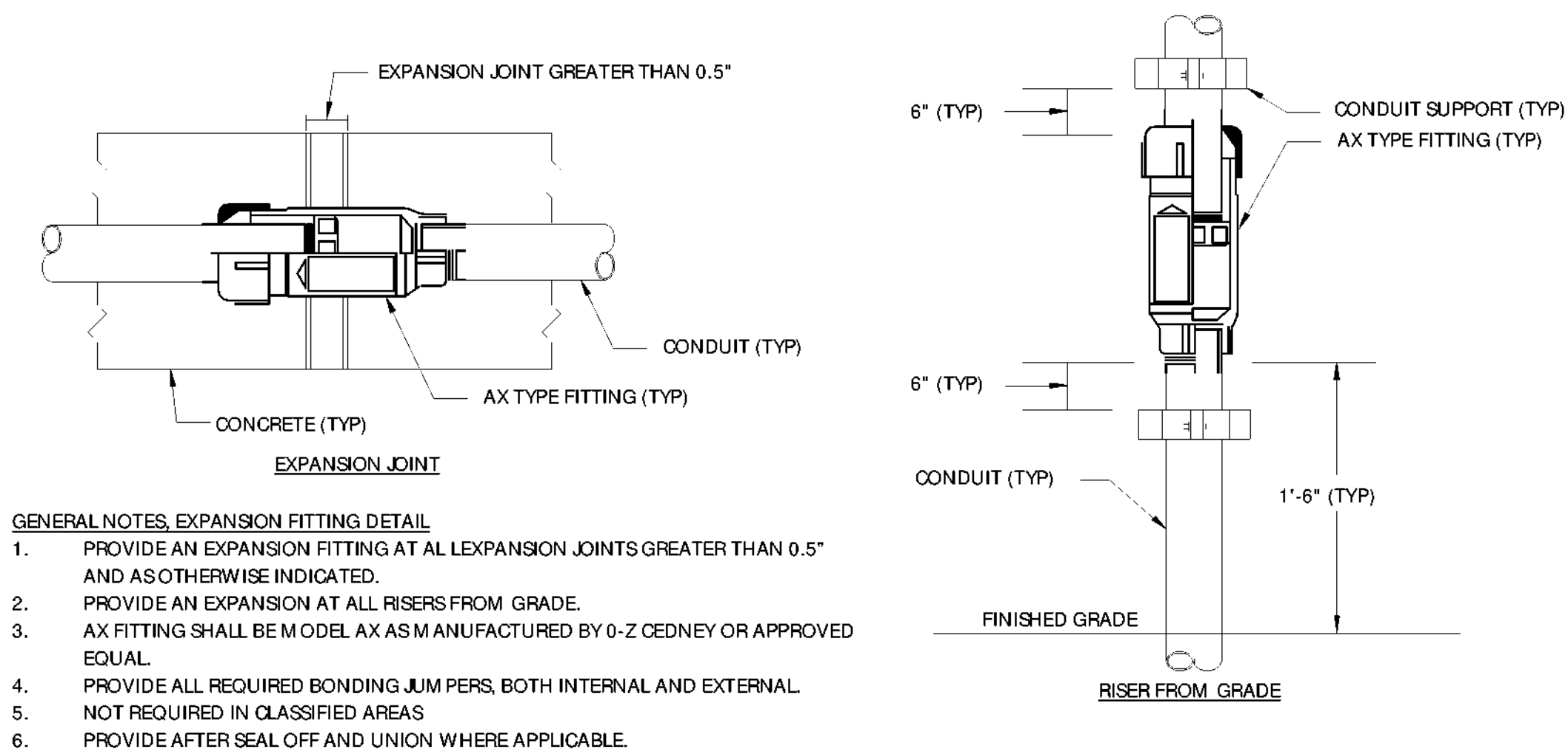
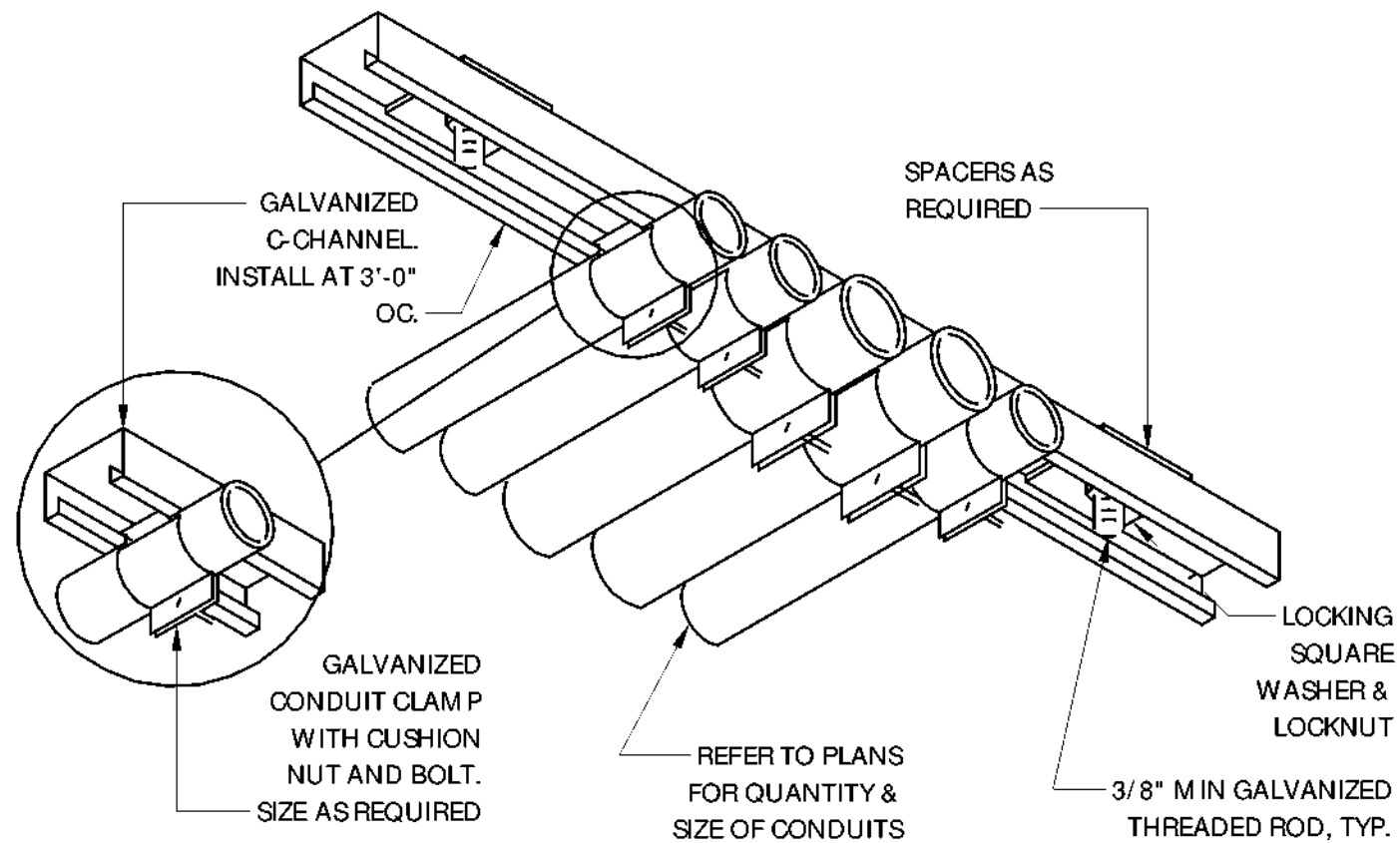


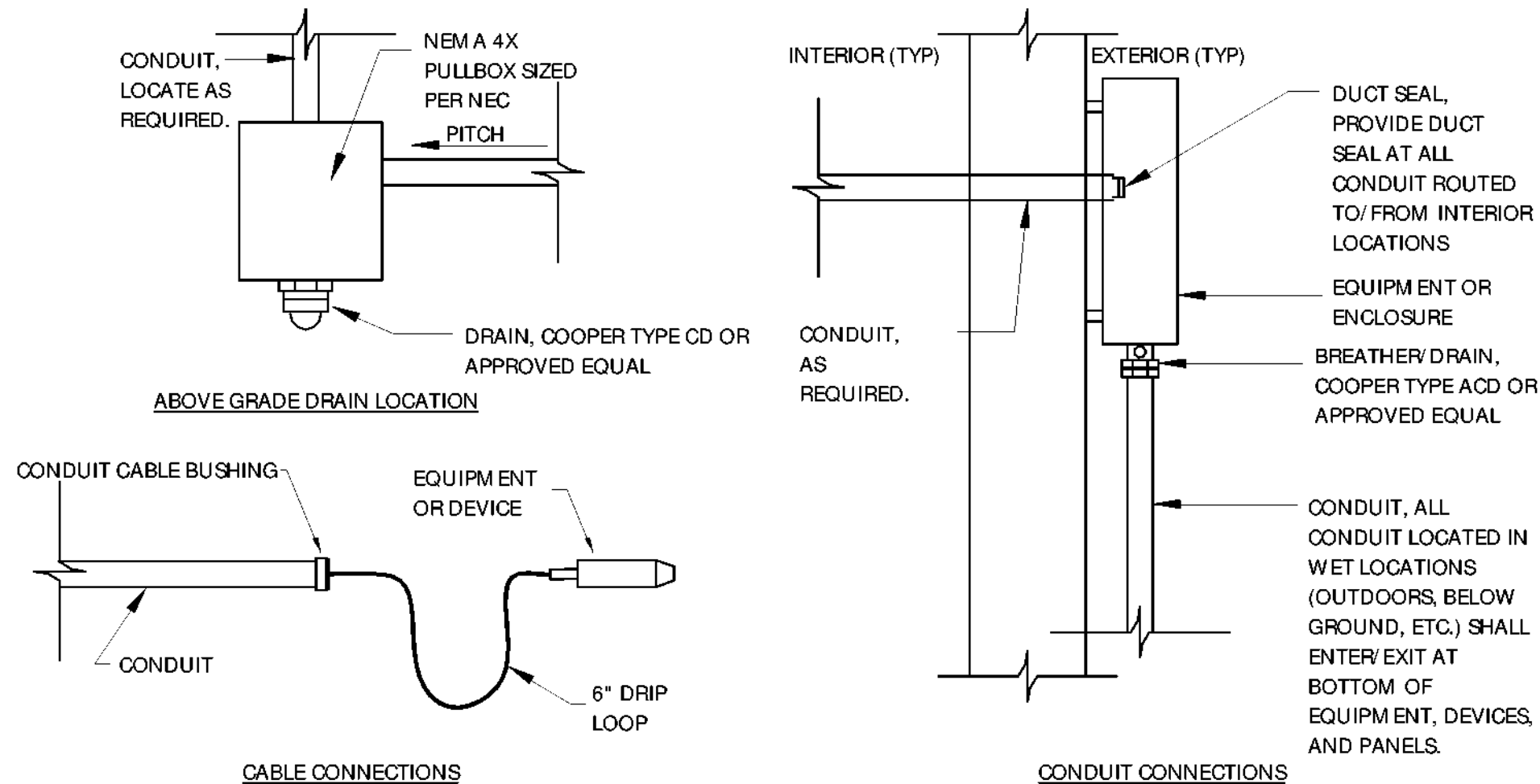
H
G
F
E
D
C
B
A
6/4/2021 3:58:11 PM



EXPANSION JOINT FITTING DETAIL
NOT TO SCALE

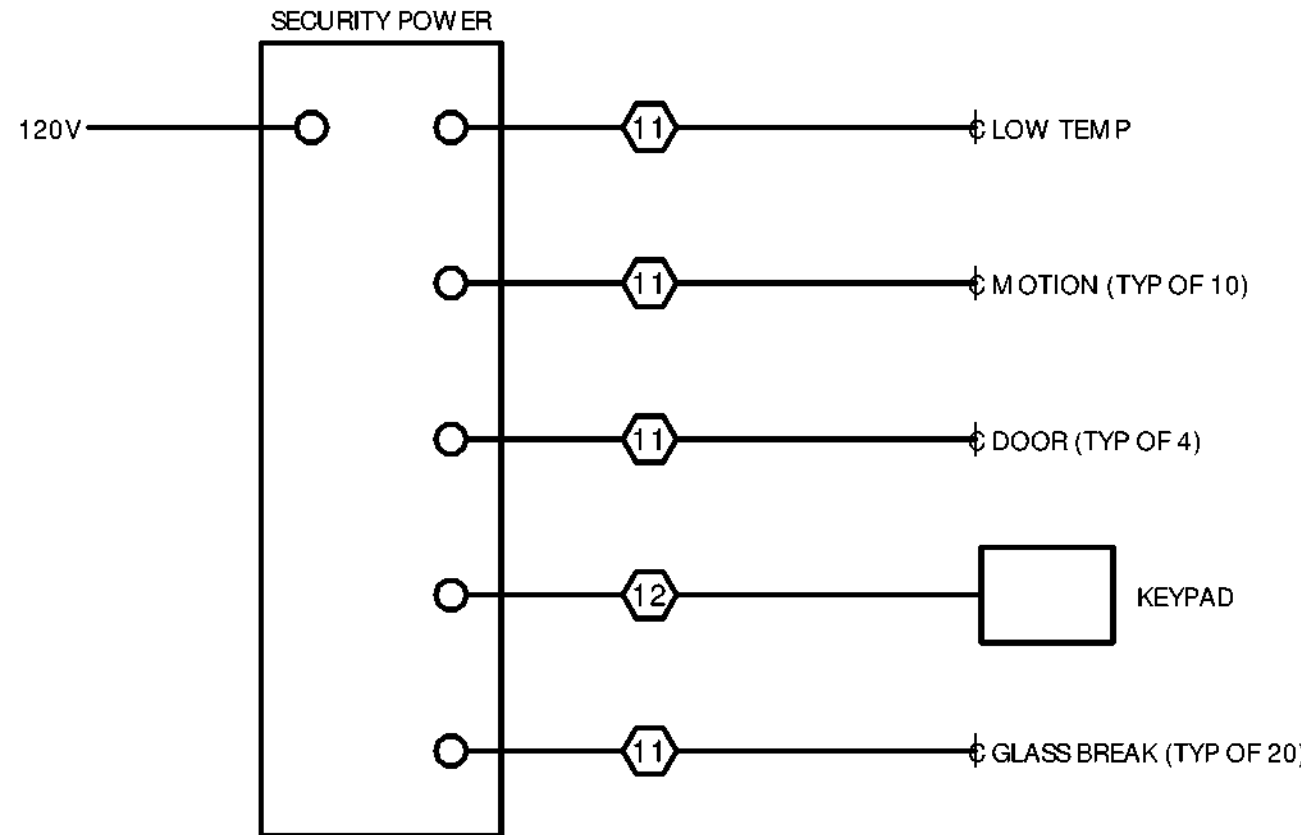
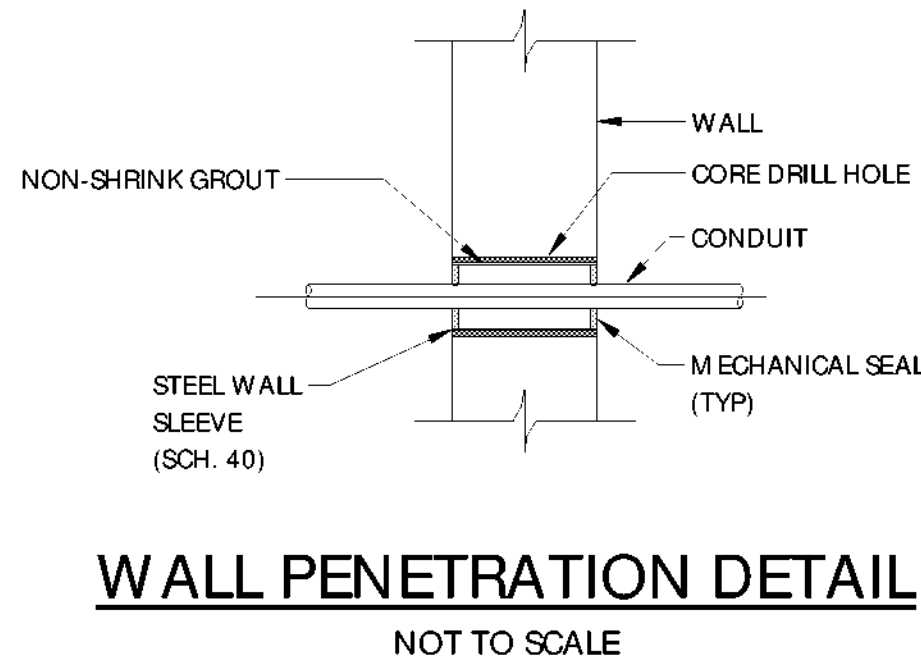


CONDUIT - SUPPORT DETAIL
NOT TO SCALE



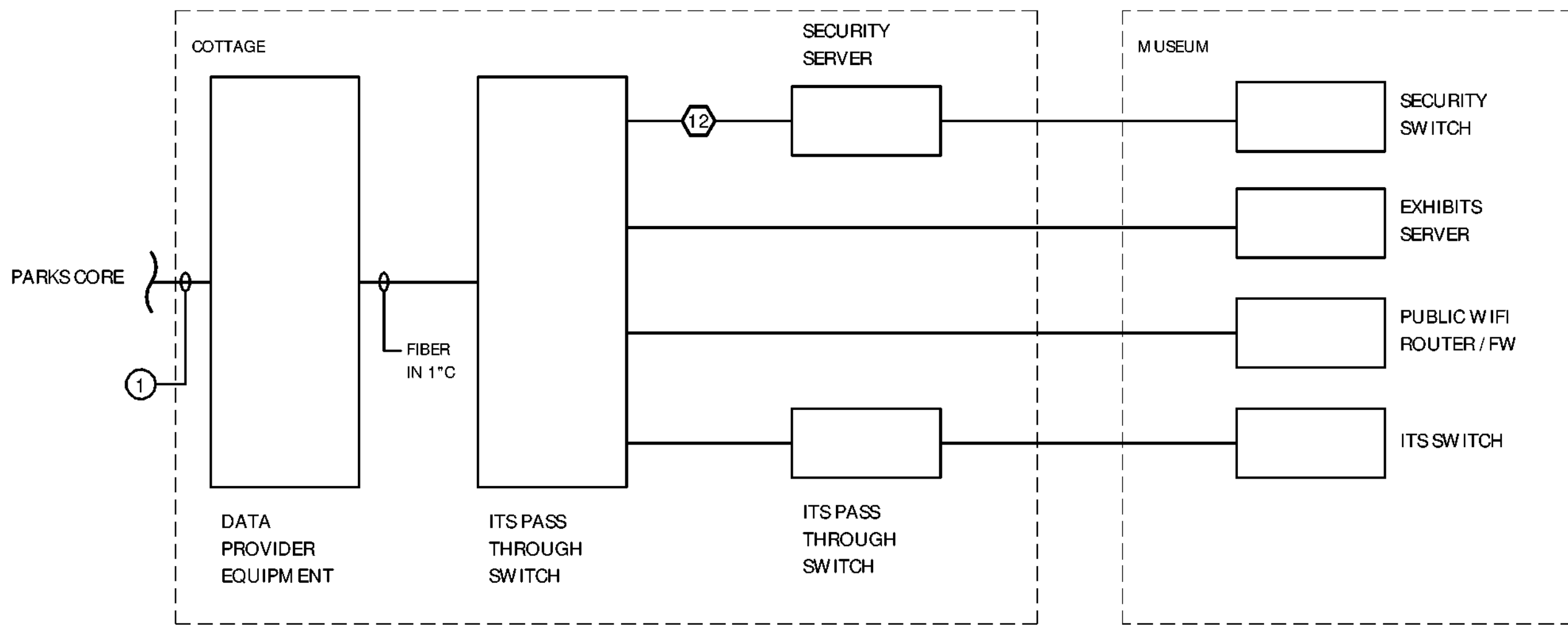
- GENERAL NOTES, TYPICAL CONDUIT DRAIN AND BREATHER DETAILS
1. ALL CONDUIT SYSTEMS EXPOSED TO TEMPERATURE DIFFERENTIALS, IN POTENTIAL CONDENSING ATMOSPHERES, EXTERIOR INSTALLED, OR INSTALLED UNDERGROUND SHALL HAVE PROVISIONS FOR DRAINING WATER OUT OF CONDUIT SYSTEMS. PROVIDE DRAIN IN CONDUIT SYSTEMS AT LOW POINTS, LOW POINT SHALL NOT BE AT EQUIPMENT OR DEVICE. A BREATHER SHALL BE PROVIDED AT THE HIGH POINT OF THE SYSTEM.
 2. PROVIDE ALL REQUIRED JUNCTION BOXES AT DRAIN POINTS.
 3. CONDUIT DRAINS SHALL BE LOCATED AT EXTERIOR LOCATIONS. PROVIDE PVC PIPE TO EXTEND DRAIN SYSTEMS TO EXTERIOR LOCATIONS WHERE REQUIRED.
 4. CONDUIT SYSTEMS PITCHED TOWARD HANDHOLES OR ELECTRICAL MANHOLES SHALL BE CONSIDERED TO HAVE PROVISIONS FOR DRAINING WATER.
 5. EQUIPMENT SHOWN IS FOR UNCLASSIFIED LOCATIONS. PROVIDE EQUIPMENT RATED FOR THE CLASSIFICATION OF THE LOCATION.

TYPICAL CONDUIT DRAIN AND BREATHER DETAILS
NOT TO SCALE



- GENERAL NOTES, SECURITY SYSTEM DIAGRAM
1. SECURITY POWER AND DEVICES TO BE PROVIDED WITH ACCORDANCE WITH SPEC 281600.
 2. QUANTITIES SHOWN FOR BID PURPOSES. COORDINATE DINAL INSTALLATION REQUIREMENTS WITH OWNER PRIOR TO SUBMITTAL.
 3. COORDINATE ALL LOCATIONS AND CIRCUIT ROUTING IN FIELD WITH OWNER.

SECURITY SYSTEM DIAGRAM
NOT TO SCALE



- KEYED NOTES, PROPOSED MUSEUM ONE-LINE
1. NEW DATA SERVICE PROVIDED TO SITE BY OWNER. COORDINATE W/ NEW EQUIPMENT AND CIRCUITING AS REQUIRED.

- GENERAL NOTES, SECURITY SYSTEM DIAGRAM
1. ALL EQUIPMENT TO BE PROVIDED BY OWNER UNDER SEPARATE NETWORK BID CONTRACT.
 2. ALL CIRCUITING SHOWN FOR BID PURPOSES. COORDINATE ACTUAL CIRCUIT W/ FINAL EQUIPMENT AND NETWORK DIAGRAM.
 3. PROVIDE CAT 5E TO ALL END POINT DATA DEVICES SHOWN ON DIAGRAMS AND PLANS
 4. COORDINATE POWER REQUIREMENTS W/ ALL DEVICES AND PROVIDE AS REQUIRED.

LOCAL AREA NETWORK DIAGRAM
NOT TO SCALE

NEW YORK
STATE OF
OPPORTUNITY.

**Parks, Recreation
and Historic Preservation**

Governor Andrew M. Cuomo

Commissioner Erik Kulesseid

IT IS A VIOLATION OF STATE EDUCATION LAW FOR ANY PERSON, UNLESS UNDER THE DIRECTION OF A LICENSED ARCHITECT/ENGINEER TO ALTER THIS DOCUMENT IN ANY WAY. ALTERATIONS MUST HAVE THE SEAL APPLIED ALONG WITH A DESCRIPTION OF THE ALTERATIONS, DATE AND ARCHITECT/ENGINEER'S SIGNATURE. COPYRIGHT © 2021

Architect:
Saratoga Associates
21 Congress Street, Suite 201
Saratoga Springs, NY 12866

SARATOGA ASSOCIATES
Landscape Architects, Architects,
Engineers, and Planners, P.C.

Engineer:
Barton and Loguidice
443 Electronics Parkway
Liverpool, NY 13088

Barton & Loguidice

Exhibit Designer:
AMAZE DESIGN
PO Box 51905
Boston, MA 02205-9761

amaze DESIGN

NYS OPRHP Taconic Region
9 Old Post Rd, PO Box 308
Staatsburg, New York 12580
(845) 889-4100
Regional Director: Linda Cooper
District Manager: Garrett Jobson

Project Title:
Philipse Manor Hall State Historic Site
Construction of Elevator/Restroom
Addition, Interior and Exterior
Rehabilitation and Site Enhancements

Project Location:
29 Warburton Ave, Yonkers, NY, 10701

Key Plan

REVISIONS		
Rev No	Description	Date

Drawn By:
TRL

Design By:
TRL

Checked By:
JWC

Approved By:
TWB

Date:
5/28/2021

Seal and Signature

Sheet Title:
ELECTRICAL
DETAILS

Bid Documents

Project Number:
1299.029.001

Drawing Number:
E401

Sheet: