

FAN SCHEDULE										
UNIT NO.	AIRFLOW	RPM	WEIGHT	DRIVE TYPE	ESP	BHP	HP	ELECTRICAL	MANUFACTURER	MODEL
EF-1	4000 CFM	1725	440.00 lb	BELT	0.50 in-wg	.98	1	480/3/60	GREENHECK	TCBRU-1-22-10
SF-1	3625 CFM	1725	495.00 lb	BELT	0.50 in-wg	.98	1	480/3/60	GREENHECK	TCBRS-1-18-10

[illegible]

ELECTRIC UNIT HEATER SCHEDULE						
UNIT NO.	INPUT	TEMPERATURE SETPOINT	CFM	OUTPUT (BTU/HR)	ELECTRICAL	MANUFACTURER & MODEL
EUH-1	15 KW	50 F	1450	51,180	480/3/60	Q MARK GUX15004832
EUH-2	15 KW	50 F	1450	51,180	480/3/60	Q MARK GUX15004832
EUH-3	20 KW	50 F	1400	68,240	480/3/60	Q MARK GUX20004832
EUH-4	20 KW	50 F	1400	68,240	480/3/60	Q MARK GUX20004832
EUH-5	20 KW	50 F	1400	68,240	480/3/60	Q MARK GUX20004832
EUH-6	20 KW	50 F	1400	68,240	480/3/60	Q MARK GUX20004832

ELECTRIC BASEBOARD SCHEDULE			
UNIT NO.	CAPACITY	ELECTRICAL	MANUFACTURER AND MODEL
EB-1	1.8 KW	480/3/60	QMARK ICG180483

AIR TERMINAL SCHEDULE			
MARK	SIZE	MANUFACTURER	MODEL
EG-1	18"x12"	TITUS	350FL
RG-1	48"x24"	TITUS	350FL
SG-1	48"x18"	TITUS	300FL
SG-2	18"x10"	TITUS	300FL



©2019 Environmental Design & Research,
Landscape Architecture, Engineering,
& Environmental Systems, D.P.C.
The following is paraphrased from the New York Education
Law, Article 145, Section 2703, and Chapter II, Section
79-1.4, and applies to this drawing: "It is a violation of this
law for any person, unless he is acting under the direction of
a licensed professional engineer, to send landscape
architect or landscape land surveyor to alter a permit in any
way, if an item bearing the seal of an engineer, landscape
architect or land surveyor is altered, the altering engineer,
landscape architect or land surveyor shall attach to the item
his seal and the date of the alteration, followed by his
signature and the date of each alteration, and a specific
description of the alteration."

	NO.	DATE	REVISION	DRAWN	APPROVED
	5				
	4				
	3	07/21	FOR CONSTRUCTION	HSM	MET
	2	10/20	100 PERCENT DESIGN REVIEW	JSR	MET
	1	04/20	60 PERCENT DESIGN REVIEW	JSR	MET

PROJECT TITLE: **MAIN PUMP STATION UPGRADE**

CLIENT: **ROCKLAND COUNTY SEWER DISTRICT NO 1**

DRAWING TITLE: **AIRFLOW DIAGRAM, RISERS, AND SCHEDULES**

ORIGINAL SIZE

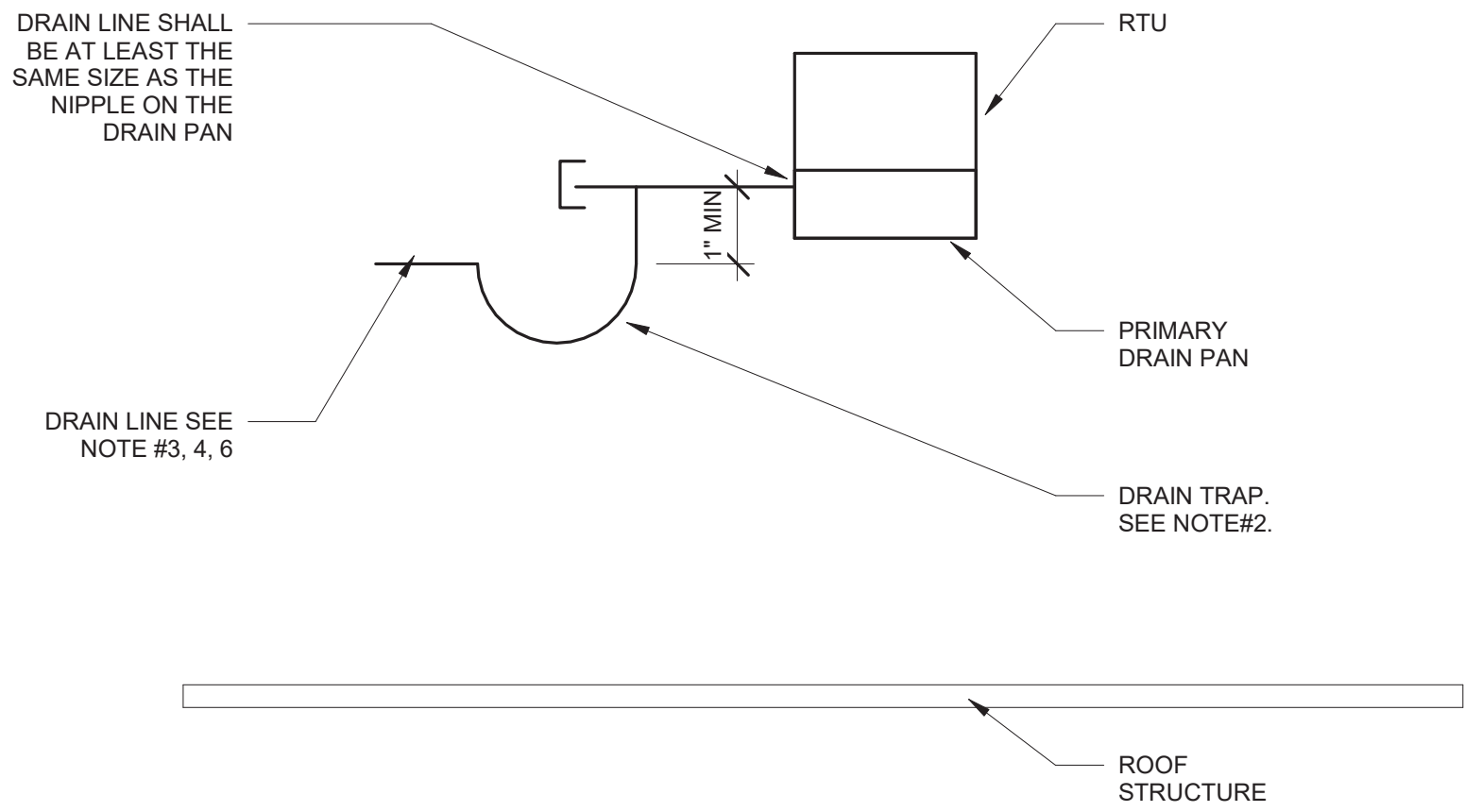
DATE:	JULY 2021
SCALE:	1/2" = 1'-0"
DRAWN:	JSR
CHECKED:	GRL
edr Job#:	19190
CONTRACT NO: RFB-RC-SWR-CIP 2020-0	
DRAWING NUMBER:	
H-002	





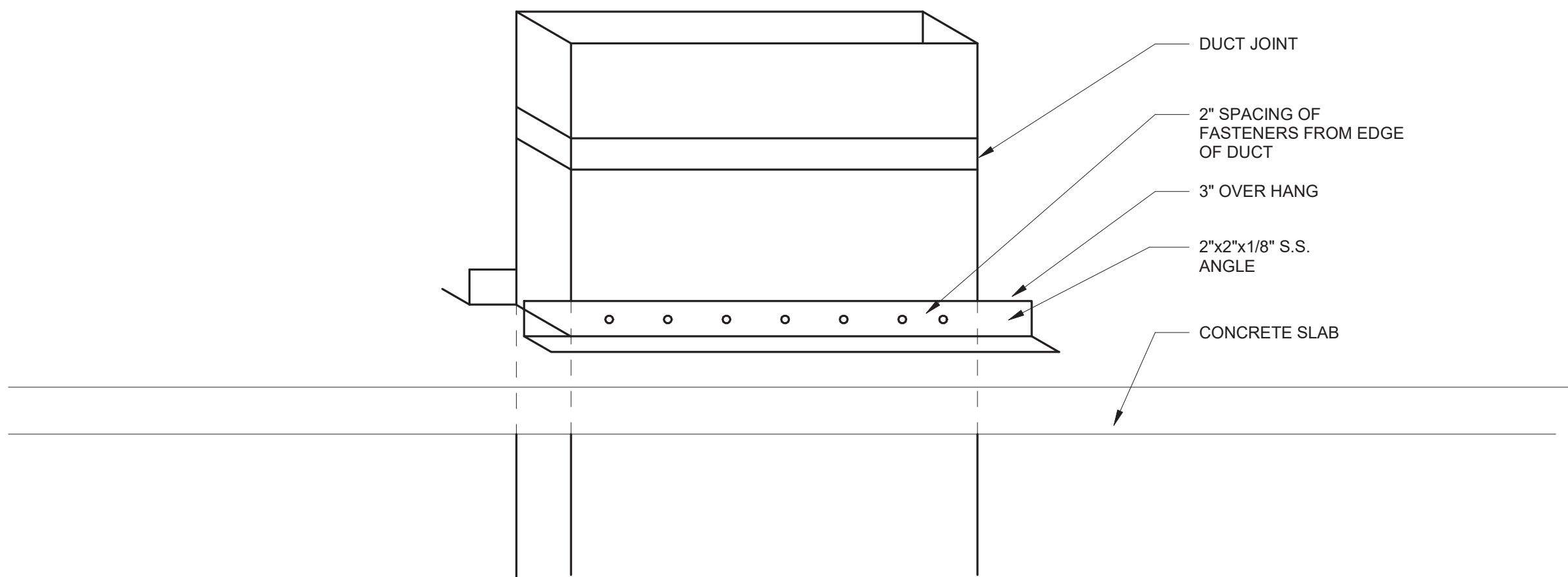
DATE:	JULY 2021
SCALE:	1/4" = 1'-0"
DRAWN:	JSR
CHECKED:	GRL
edr Job#:	19190
CONTRACT NO: RFB-RC-SWR-CIP 2020-02	
DRAWING NUMBER:	
H-008	



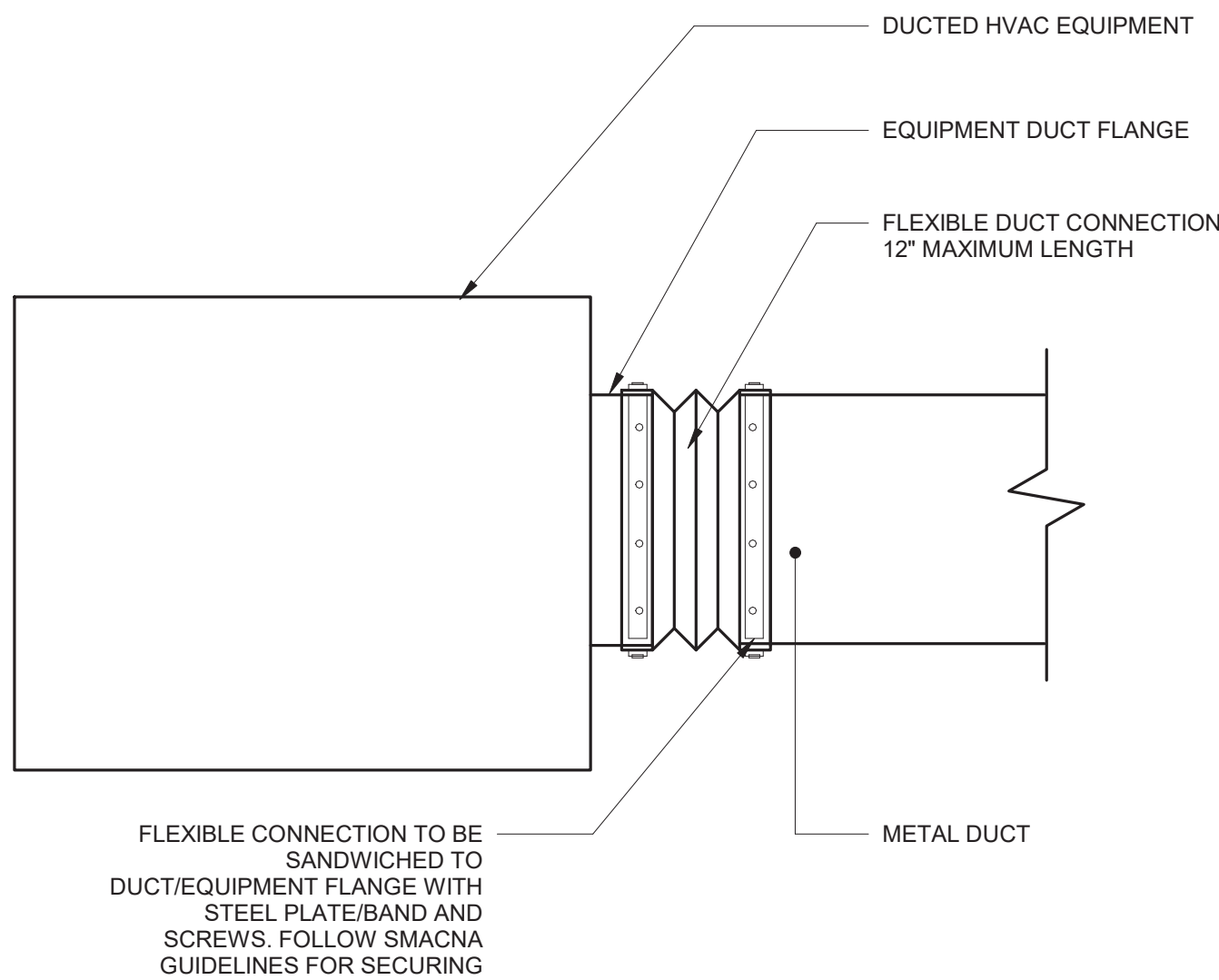


- NOTES:
1. THE DEPTH OF THE SEAL SHALL BE A MINIMUM OF THE AIR HANDLING UNITS TOTAL STATIC PRESSURE IN INCHES OF WATER PLUS 1"
 2. MANUALLY PRIME FILL TRAP PRIOR TO START-UP OF UNIT.
 3. SPILL DRAIN LINE TO ROOF.
 4. CONDENSATE LINES FOR SYSTEMS SIZED 5 TONS OR LESS TO BE 1". CONDENSATE LINES FOR SYSTEMS LARGER THEN 5 TONS TO BE 1-1/4". ALL DRAIN LINES TO BE PITCHED.
 5. FOR UNITS EQUIPPED WITH SECONDARY DRAIN PANS, PROVIDE A CONDENSATE DRAIN TRAP SIMILAR TO ABOVE.

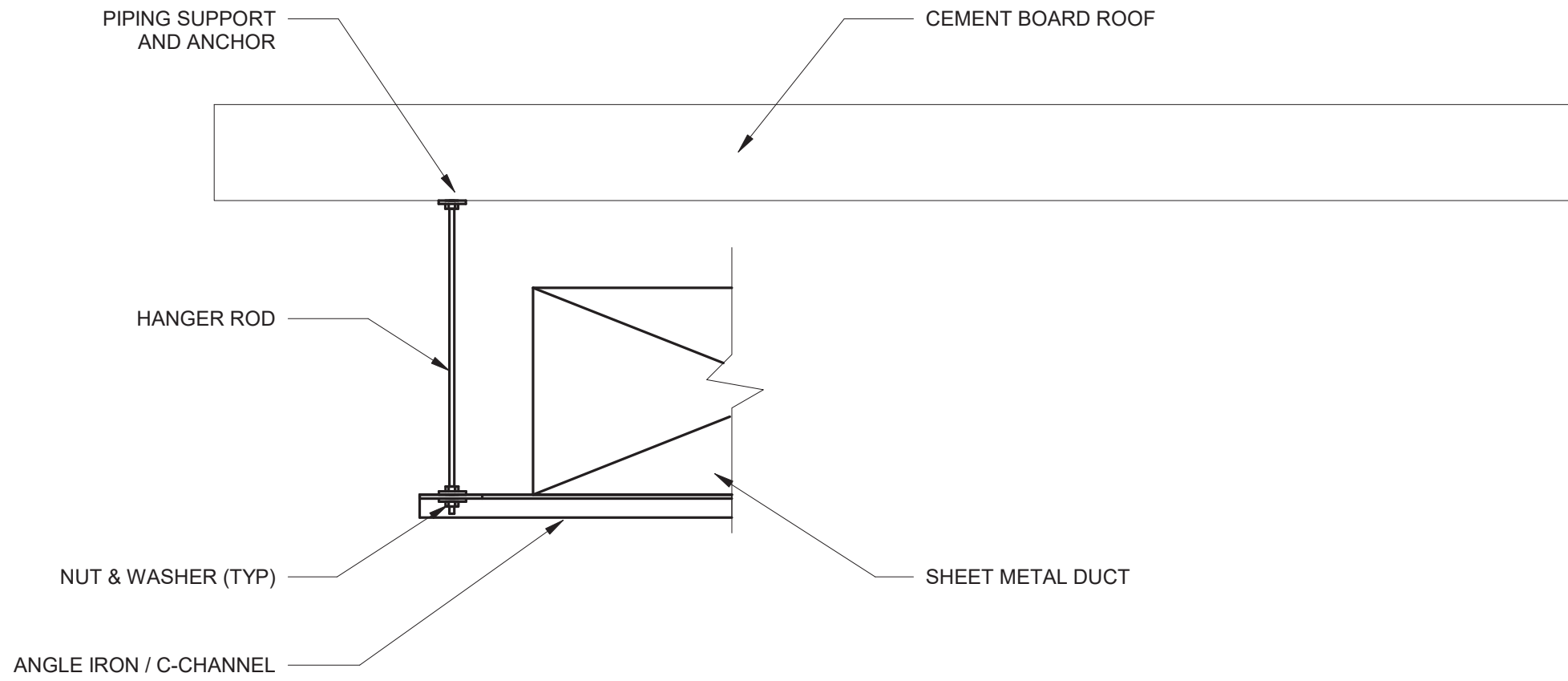
1 AHU/FAN COIL CONDENSATE DRAIN PIPING
1/8" = 1'-0"



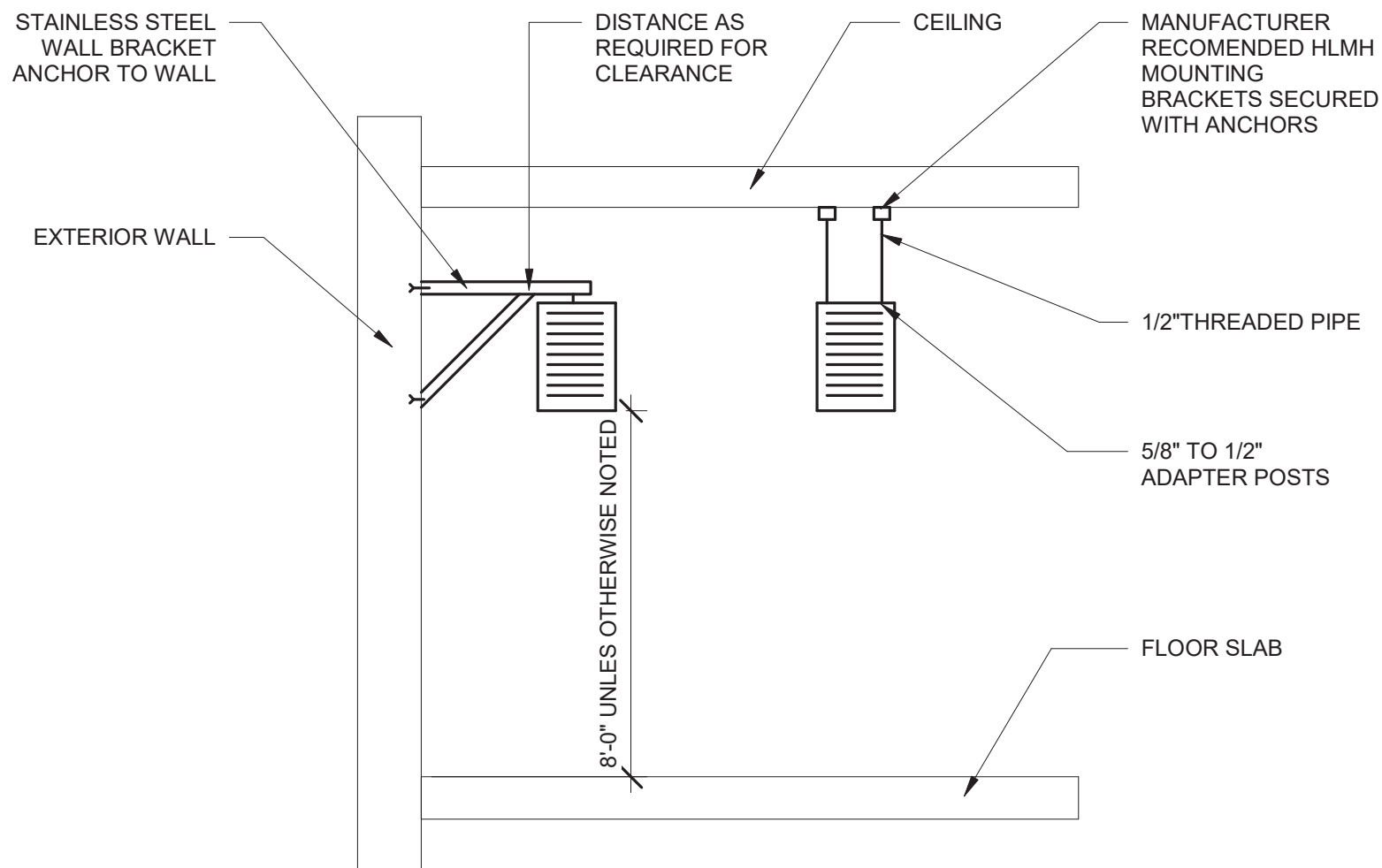
3 DUCT RISER SUPPORT DETAIL
1/8" = 1'-0"



5 FLEXIBLE DUCT CONNECTION TO EQUIPMENT
1/8" = 1'-0"

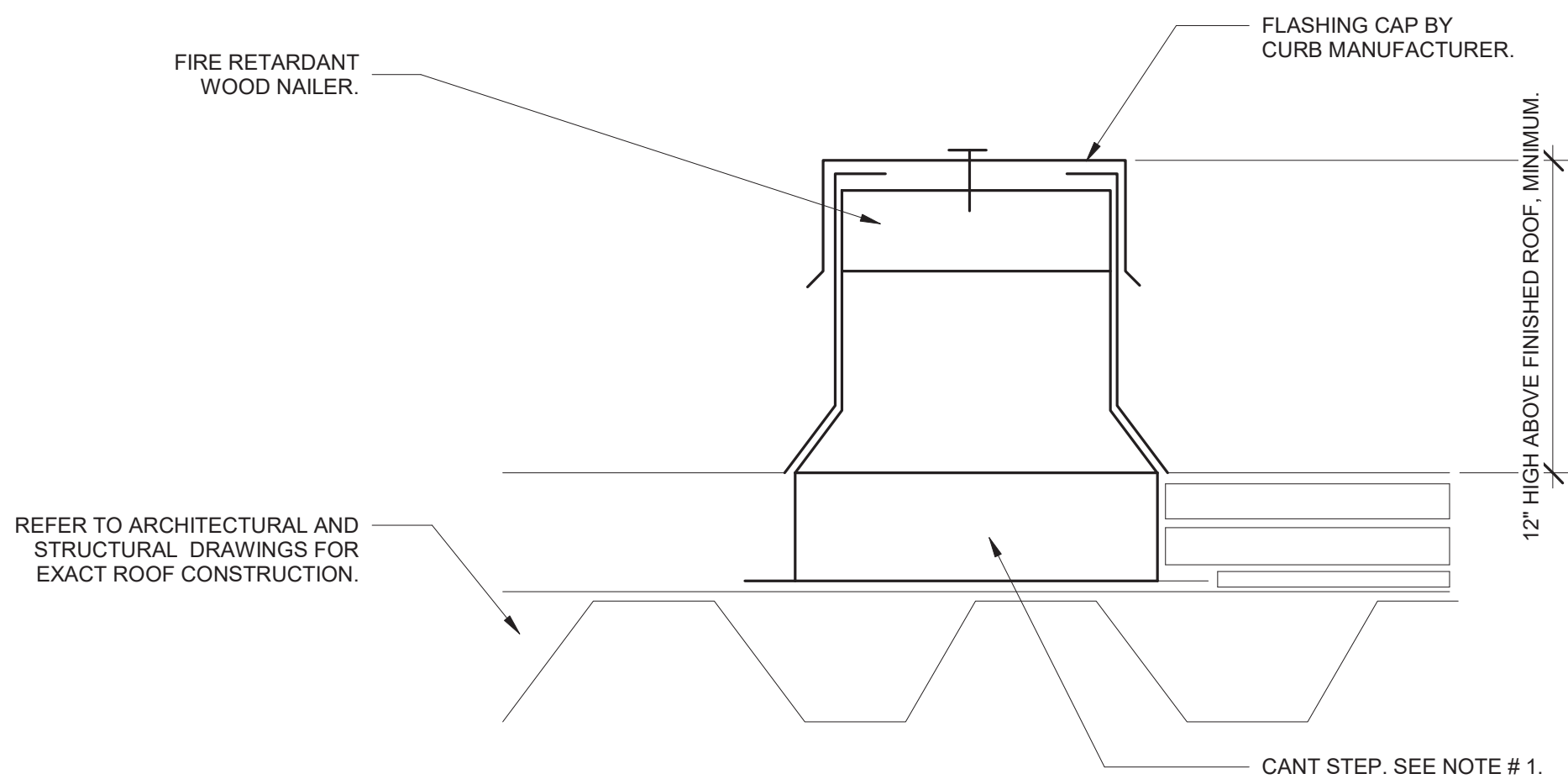


2 DUCT HANGER DETAIL - CHANNEL 2
1/8" = 1'-0"



- NOTES:
1. SUPPORT FROM WALL UNLESS OTHERWISE NOTED

4 ELECTRIC UNIT HEATER MOUNTING DETAIL
1/8" = 1'-0"



- NOTES:
1. THE RAISED CANT STEP HEIGHT SHALL BE COORDINATED WITH THICKNESS OF ROOF INSULATION ON ARCHITECTURAL DRAWINGS. IN LIEU OF A SUPPORT CURB WITH A RAISED CANT, PROVIDE CONTINUOUS FIRE RETARDANT BLOCKING, UNDER THE RAIL, AND RAISE THE RAIL TO ACCOMMODATE THE THICKNESS OF THE ROOF INSULATION. SECURE BLOCKING TO THE ROOF STRUCTURE AND RAIL TO THE BLOCKING WITH LOAD RATED, RUSTPROOF FASTENERS.
 2. THE EQUIPMENT RAIL SHALL BE DESIGNED AND FABRICATED TO THOROUGHLY SUPPORT ITS RESPECTIVE PIECE OF EQUIPMENT. AS A MINIMUM, EQUIPMENT RAILS SHALL BE FABRICATED OF 18 GAUGE GALVANIZED STEEL WITH BUILT-IN CANT, MONOLITHIC CONSTRUCTION WITH INTEGRAL BASE PLATE AND CONTINUOUS MITERED AND WELDED CORNER SEAMS, WITH FACTORY INSTALLED FIRE RETARDANT WOOD NAILER. EACH EQUIPMENT RAIL SHALL INCLUDE A MATCHING 18 GAUGE GALVANIZED STEEL COUNTERFLASHING CAP WITH INTEGRAL DRIP EDGE, ALL CORNERS MITERED AND WELDED, AND SCREWS FOR ATTACHMENT. EQUIPMENT CURBS OVER 3 FEET LONG SHALL INCORPORATE 14 GAUGE INTERNAL GUSSET REINFORCING. SECURELY FASTEN TO ROOF DECK AND INSTALL IN STRICT ACCORDANCE WITH MANUFACTURER'S INSTALLATION INSTRUCTIONS. THE UNIT/PIPING/DUCTWORK SHALL BE INSTALLED LEVEL AND PLUMB.

6 PREFAB EQUIPMENT SUPPORT RAIL
1/8" = 1'-0"



Environmental Design & Research,
Landscape Architecture, Engineering
& Environmental Services, D.P.C.

217 Montgomery Street, Suite 1000
Syracuse, New York 13202
P. 315.471.0688



©2018 Environmental Design & Research,
A Professional Services, LLC
All rights reserved. No part of this publication may be reproduced, stored in a retrieval system, or transmitted, in any form or by any means, electronic, mechanical, photocopying, recording, or by any information storage and retrieval system, without prior written permission from Environmental Design & Research, D.P.C.
This drawing is the property of Environmental Design & Research, D.P.C. and shall not be used for any other project without the written consent of Environmental Design & Research, D.P.C.

DRAWING REVISIONS		DRAWN		APPROVED	
NO.	DATE	REVISION			
5					
4			HSM	MET	
3	07/21	FOR CONSTRUCTION			
2	10/20	100 PERCENT DESIGN REVIEW	JSR	MET	
1	04/20	60 PERCENT DESIGN REVIEW	JSR	MET	

PROJECT TITLE:		ORIGINAL SIZE	
MAIN PUMP STATION UPGRADE		ARCH D	
CLIENT:			
ROCKLAND COUNTY SEWER DISTRICT NO 1			
DRAWING TITLE:			
DETAILS I			

DATE:	JULY 2021
SCALE:	1/8" = 1'-0"
DRAWN:	JSR
CHECKED:	GRL
edr Job#:	19190
CONTRACT NO. RFB-RC-SWR-CIP 2020-02	
DRAWING NUMBER:	

H-012