

38 Broad Hollow Road, 4th Floor East
Melville, NY 11747
631.756.8000 • www.h2m.com

CONSULTANTS:

FELLENZER III
ENGINEERING LLP

**22 Mulberry St., Suite 2A,
Middletown, NY 10940
t 845-343-1481 fx 855-320-8735**

www.fellip.com

Project #: 15-345

[illegible]

ERIC D. FELLENER, P.E.



PROFESSIONAL ENGINEER
NO. 073084-1

DESIGNED BY: PMC	DRAWN BY: SRB	CHECKED BY: EDF	REVIEWED BY: o
PROJECT No: FILB 1501	DATE: 11/15/19	SCALE: AS SHOWN	

CLIENT **Montebello Realty
GP LLC**

**Braemar at Montebello Assisted
Living Residence**

**Montebello Crossing,
250 Lafayette Avenue
(Route 59)
Village of Montebello
New York**

CONTRACT

STATUS	REGULATORY REVIEW
--------	--------------------------

SHEET TITLE

**FIRE PROTECTION
PARTIAL BASEMENT RCP
PLAN - AREA A**

DRAWING No. FP2.0A	SHEET No. / OF
------------------------------	----------------------



1 FIRE PROTECTION BASEMENT FLOOR RCP PLAN - AREA A
SCALE: 1/8" = 1'-0"

FELLENZER III
ENGINEERING LLP

**22 Mulberry St., Suite 2A,
Middletown, NY 10940
t 845-343-1481 fx 855-320-8735**

ERIC D. FELLENER, P.E.



NY PROFESSIONAL ENGINE
NO. 073084-1

DESIGNED BY: PMC	DRAWN BY: SRB	CHECKED BY: EDF	REVIEWED BY: o
PROJECT No: FILB 1501	DATE: 11/15/19	SCALE: AS SHOWN	

**Montebello Realty
GP LLC**

**Braemar at Montebello Assisted
Living Residence**

**Montebello Crossing,
250 Lafayette Avenue
(Route 59)
Village of Montebello
New York**

CONTRACT

STATUS	REGULATORY REVIEW
--------	-------------------

SHEET TITLE

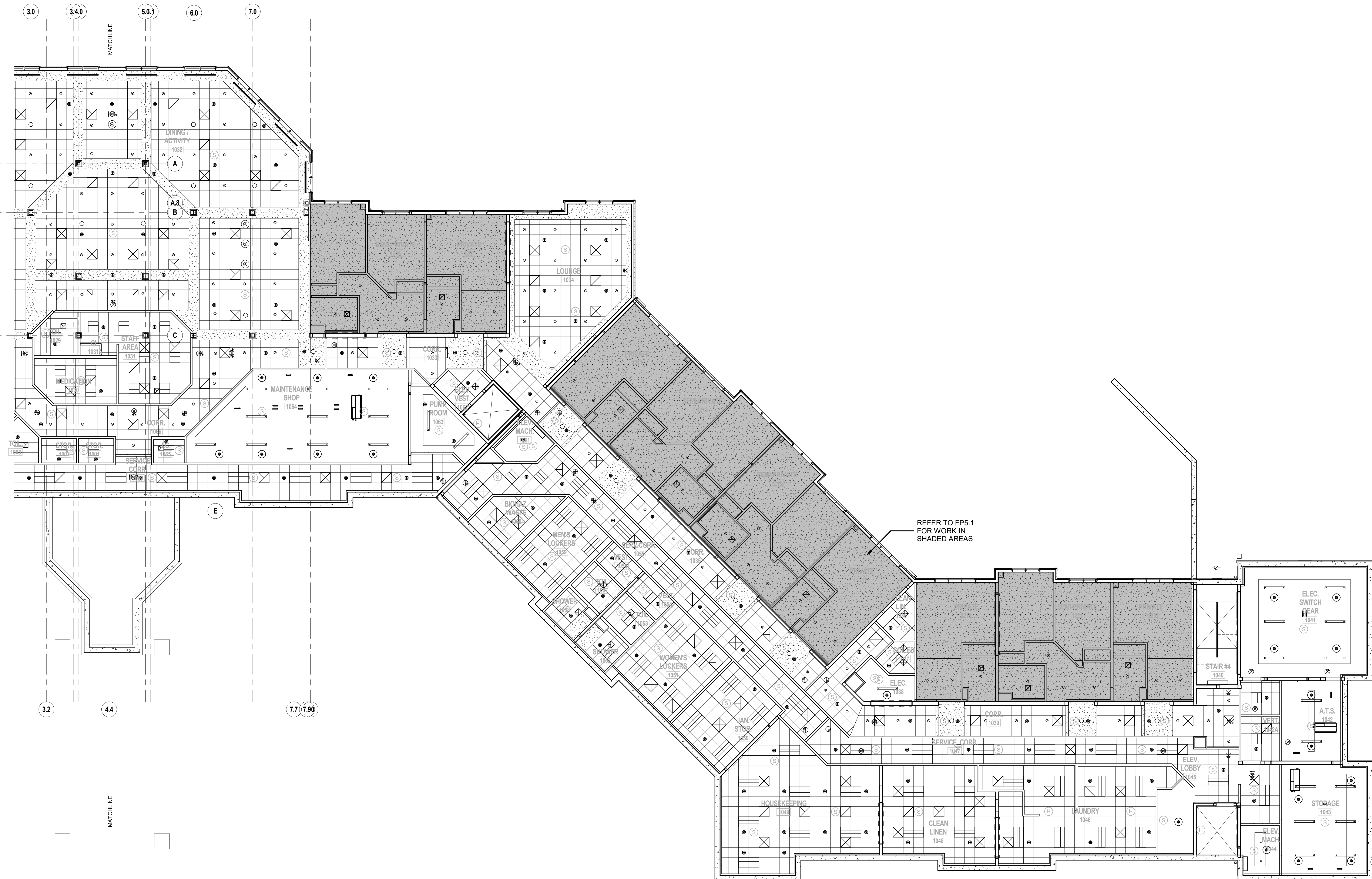
**FIRE PROTECTION
PARTIAL BASEMENT RCP
PLAN - AREA B**

DRAWING N

FP2.0B

SHEET

2



1 FIRE PROTECTION BASEMENT FLOOR RCP PLAN - AREA B
SCALE: 1/8" = 1'-0"

[illegible]

ERIC D. FELLENER, P.E.



NY PROFESSIONAL ENGINEER
NO. 073084-1

DESIGNED BY: PMC				DRAWN BY: SRB		CHECKED BY: EDF		REVIEWED BY: o	
PROJECT No: FILB 1501				DATE: 11/15/19				SCALE: AS SHOWN	

CLIENT

**Montebello Realty
GP LLC**

**Braemar at Montebello Assisted
Living Residence**

**Montebello Crossing,
250 Lafayette Avenue
(Route 59)
Village of Montebello
New York**

CONTRACT

STATUS	REGULATORY REVIEW
--------	-------------------

SHEET TITLE

**FIRE PROTECTION
PARTIAL FIRST RCP PLAN
- AREA A**

DRAWING No.

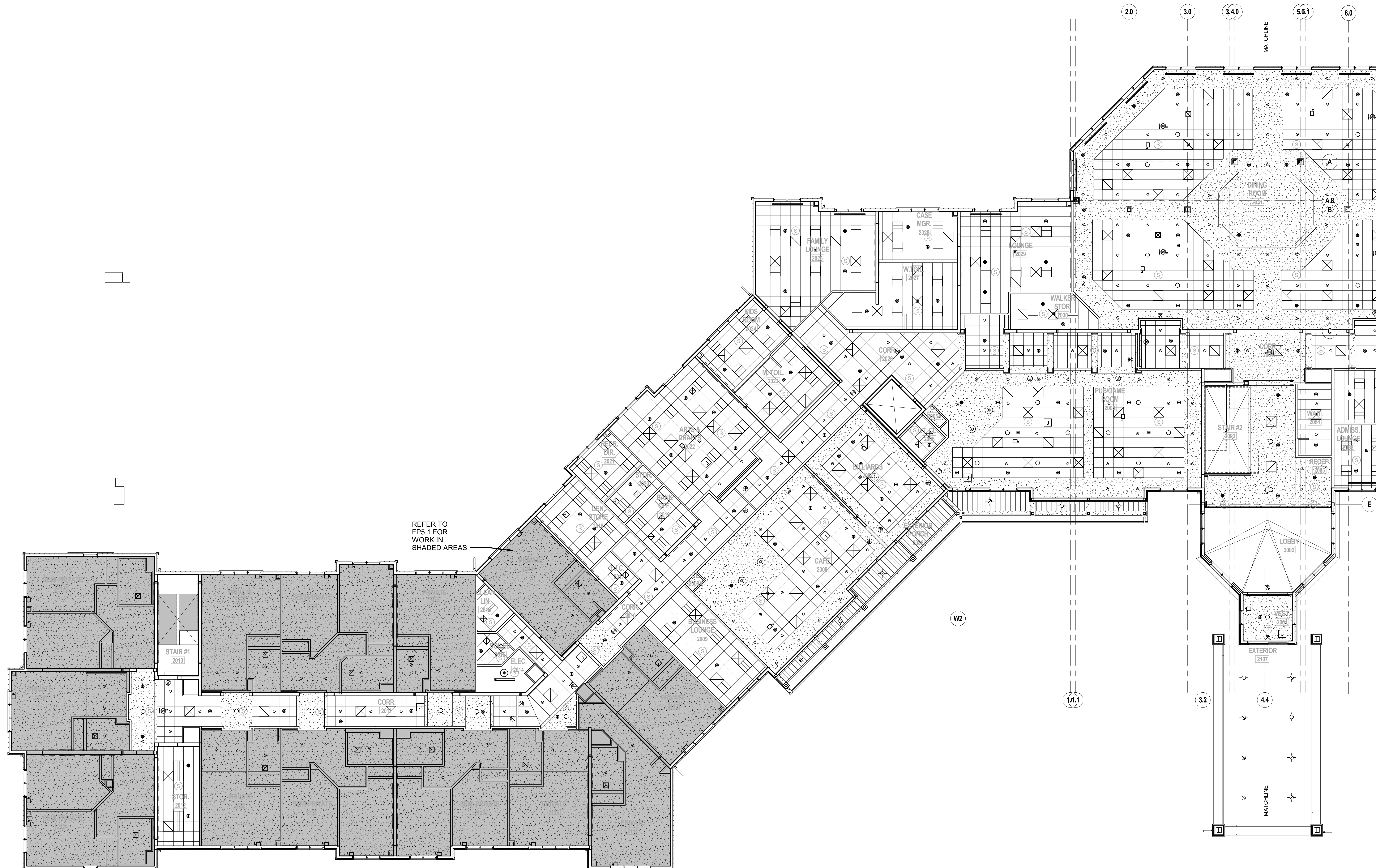
FP2.1A

電話 No.

Sheet No. _____

C:\Users\srbl\Desktop\REVIT LOCAL FILES\15-345 MONTIBELLO ASSISTED LIVING\17-0206 FILB1501_Central\17_M\NEW LOCAL FILE\j.m

1/24/2020 10:08:52 AM



1 FIRE PROTECTION FIRST FLOOR RCP PLAN - PART A
SCALE: 1/8" = 1'-0"

FELLENZER III
ENGINEERING LLP

22 Mulberry St., Suite 2A,
Middletown, NY 10940
t 845-343-1481 fx 855-320-8735

ERIC D. FELLENER, P.E.



NY PROFESSIONAL ENGINE
NO. 073084-1

DESIGNED BY: PMC	DRAWN BY: SRB	CHECKED BY: EDF	REVIEWED BY: 0
PROJECT No: FILB 1501	DATE: 11/15/19	SCALE: AS SHOWN	

**Montebello Realty
GP LLC**

**Braemar at Montebello Assisted
Living Residence**

**Montebello Crossing,
250 Lafayette Avenue
(Route 59)
Village of Montebello
New York**

CONTRACT

STATUS REGULATORY REVIEW

SHEET TITLE

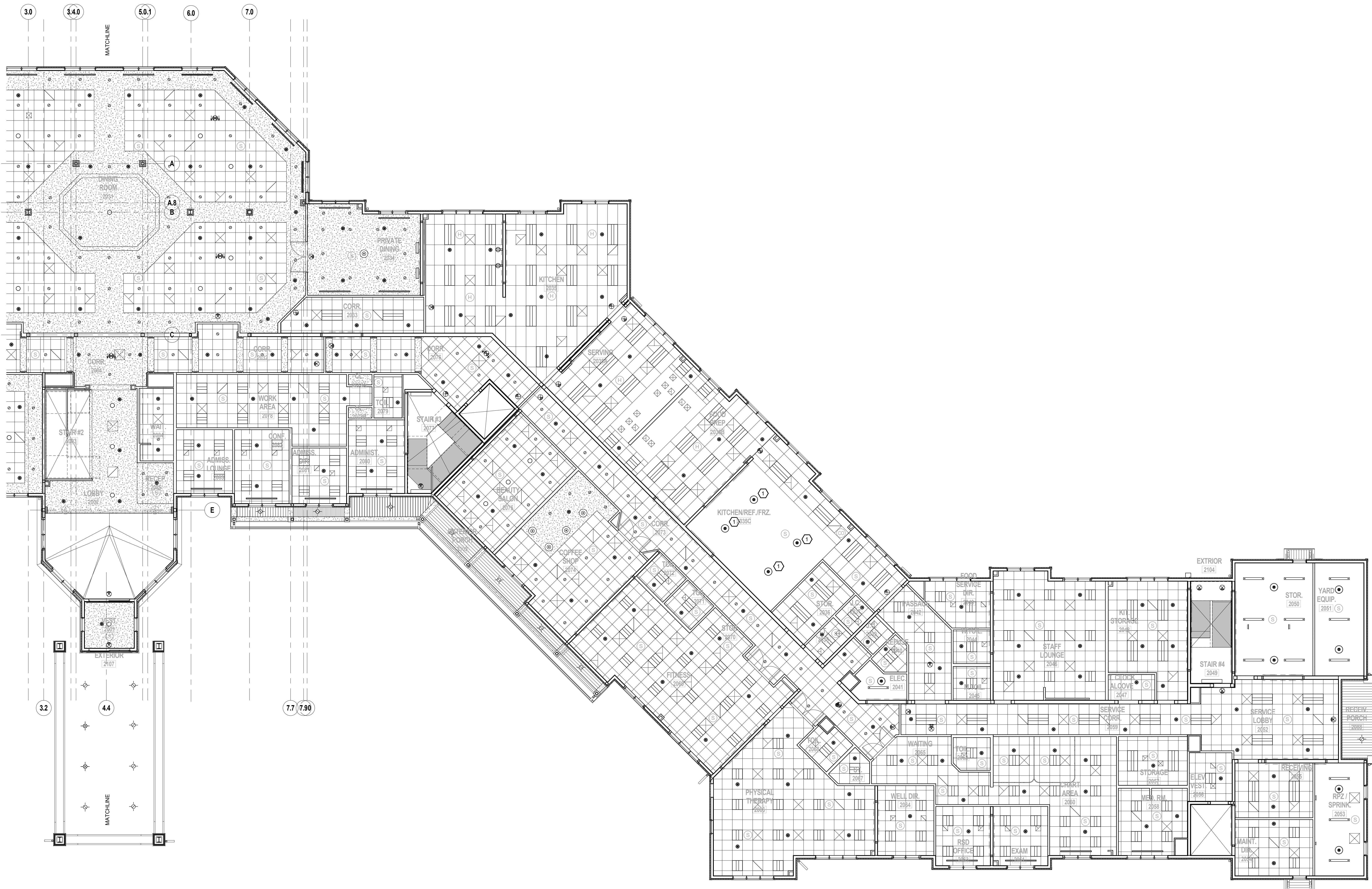
**FIRE PROTECTION
PARTIAL FIRST RCP PLAN
- AREA B**

DRAWING M

FP2.1B

SHEET No.

OF



1 FIRE PROTECTION FIRST FLOOR RCP PLAN - PART B
SCALE: 1/8" = 1'-0"

SCALE: 1/8" = 1'-0"



KEYED NOTE:

1 SPRINKLERS TO OPERATE ON A DRY PIPE SYSTEM.

**538 Broad Hollow Road, 4th Floor East
Melville, NY 11747
631.756.8000 • www.h2m.com**

www.fellp.com

**22 Mulberry St., Suite 2A,
Middletown, NY 10940
t 845-343-1481 fx 855-320-8735**

[illegible]

ERIC D. FELLENER, P.E.



NO. 073084-1

DESIGNED BY: PMC	DRAWN BY: SRB	CHECKED BY: EDF	REVIEWED BY: o
PROJECT No: FILB 1501		DATE: 11/15/19	SCALE: AS SHOWN

**Montebello Realty
GP LLC**

**Braemar at Montebello Assisted
Living Residence**

**Montebello Crossing,
250 Lafayette Avenue
(Route 59)
Village of Montebello
New York**

CONTRACT

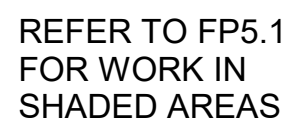
STATUS	REGULATORY REVIEW
--------	-------------------

SHEET TITLE

**FIRE PROTECTION
PARTIAL SECOND RCP
PLAN - AREA A**

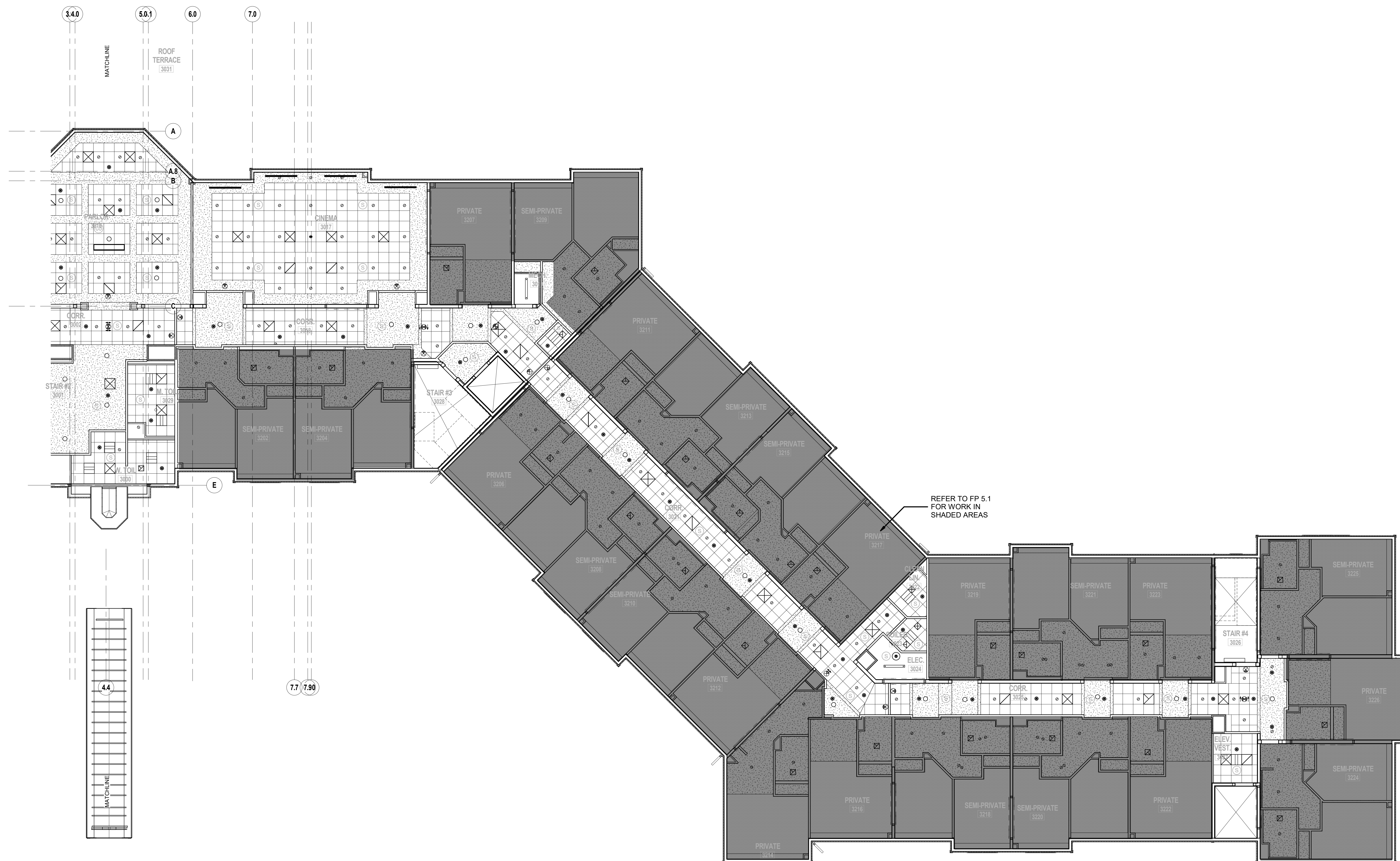
FP2.2A

OF



SCALE: 1/8" = 1'-0"





1 FIRE PROTECTION SECOND FLOOR RCP PLAN - PART B
SCALE: 1/8" = 1'-0"



[illegible]

ERIC D. FELLENER, P.E.



NY PROFESSIONAL ENGINE
NO. 073084-1

DESIGNED BY: PMC	DRAWN BY: SRB	CHECKED BY: EDF	REVIEWED BY: 0
PROJECT No: FILB 1501	DATE: 11/15/19	SCALE: AS SHOWN	

CUEN

**Montebello Realty
GP LLC**

**Braemar at Montebello Assisted
Living Residence**

**Montebello Crossing,
250 Lafayette Avenue
(Route 59)
Village of Montebello
New York**

CONTRACT

STATUS REGULATORY REVIEW

SHEET T1

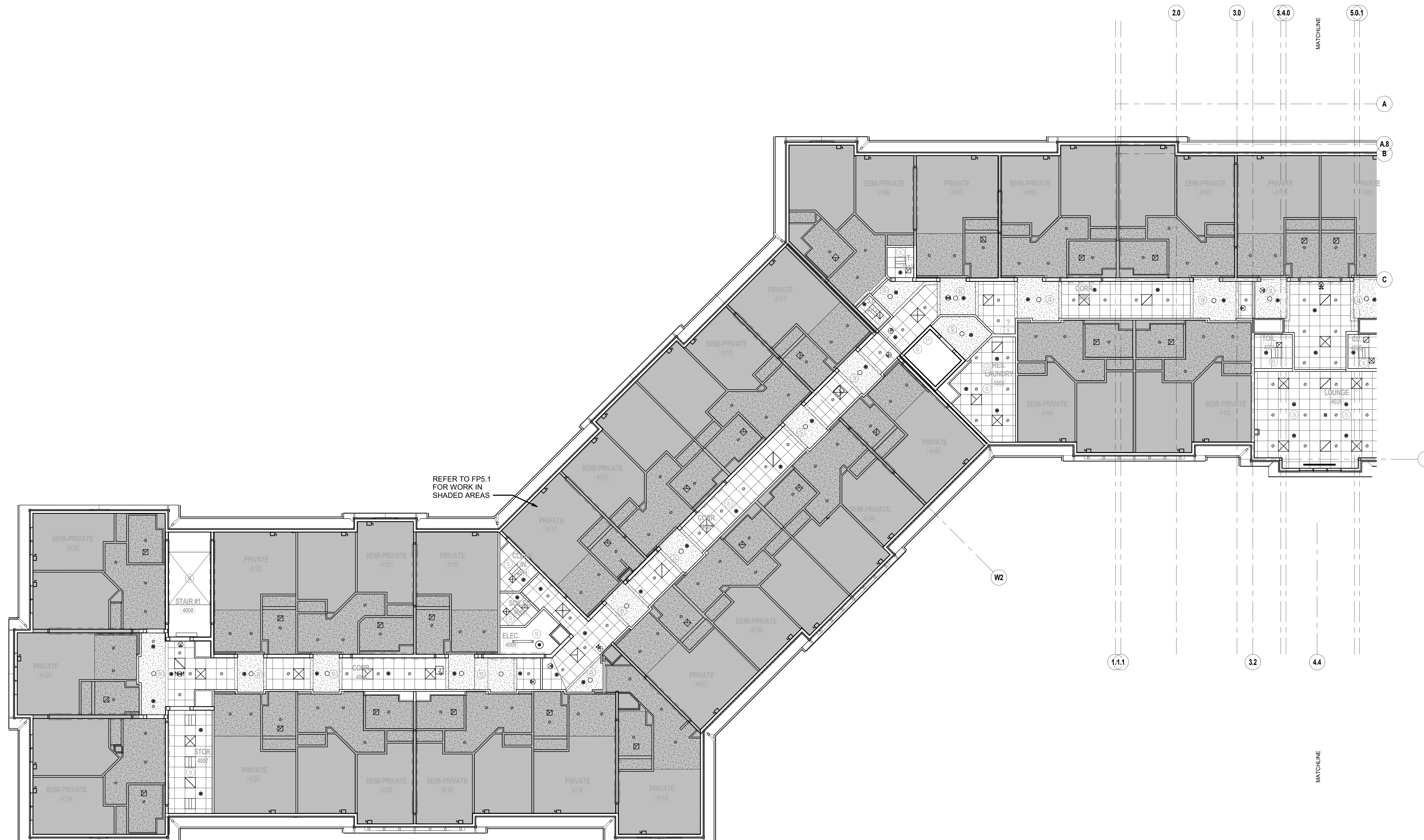
**FIRE PROTECTION
PARTIAL THIRD RCP PLAN
- AREA A**

DRAWING

FP2.3A

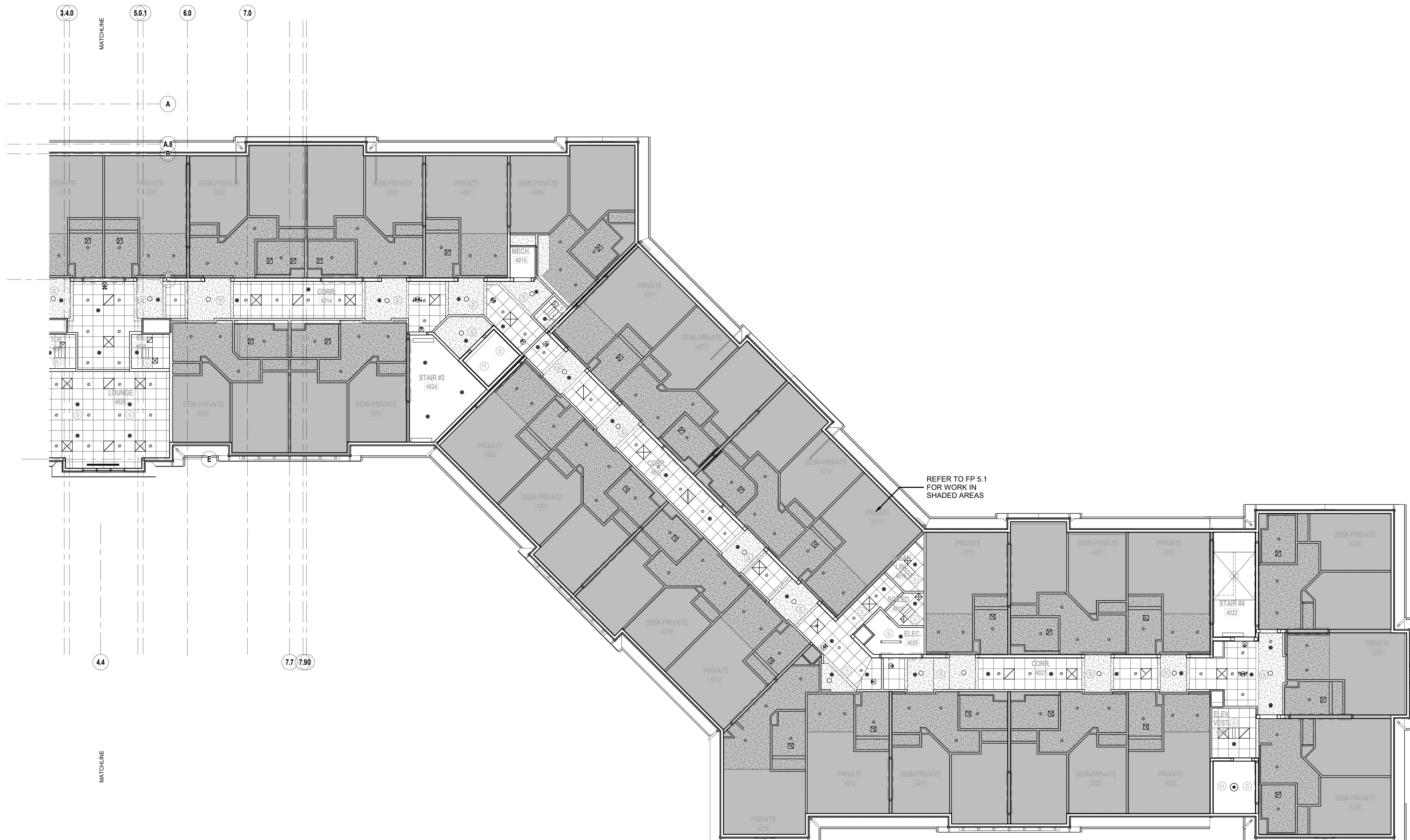
SHEET No.

OF



1 FIRE PROTECTION THIRD FLOOR RCP PLAN - PART A
SCALE: 1/8" = 1'-0"





1 FIRE PROTECTION THIRD FLOOR RCP PLAN - PART B
SCALE: 1/8" = 1'-0"

