

UNIT VENTILATOR SCHEDULE																										
TAG	LOCATION	TYPE	AIRSIDE PERFORMANCE			HYDRONIC PERFORMANCE								COOLING PERFORMANCE										MANUFACTURER & MODEL NO.	NOTES	
			FAN SPEED SETTING	SUPPLY (CFM)	MIN. O.A. (CFM)	CAPACITY (MBH)	E.A.T. (°F)	L.A.T. (°F)	E.W.T. (°F)	L.W.T. (°F)	FLOW RATE (GPM)	W.P.D. (FT.)	FLUID	ROWS	TOTAL MBH	SENSIBLE MBH	EAT (DB/WB)	LAT (DB/WB)	COIL TYPE	REFRIGERANT	VOLT	PHASE	MCA			MAX FUSE
UV-11-W	CLASSROOM	FLOOR	HIGH	1500	448	81	49	100	180	125.8	3.0	3.5	HW	3	42	37	80/67	55/54	DX	R-410A	208	3	30.1	45	DAIKIN — AZQ 054	1,2,3,4,5,6,7,8
UV-13-W	CLASSROOM	FLOOR	HIGH	1500	797	104	35	100	180	127.8	4.0	3.5	HW	3	48	32	80/67	55/54	DX	R-410A	208	3	30.1	45	DAIKIN — AZQ 054	1,2,3,4,5,6,7,8
UV-14-W	CLASSROOM	FLOOR	HIGH	1500	445	81	49	100	180	139.4	3.0	3.5	HW	3	42	37	80/67	55/54	DX	R-410A	208	3	30.1	45	DAIKIN — AZQ 054	1,2,3,4,5,6,7,8
UV-15-W	CLASSROOM	FLOOR	HIGH	1500	797	104	35	100	180	127.8	4.0	3.5	HW	3	48	32	80/67	55/54	DX	R-410A	208	3	30.1	45	DAIKIN — AZQ 054	1,2,3,4,5,6,7,8
UV-16-W	CLASSROOM	FLOOR	HIGH	1350	440	75	48	100	180	104.4	2.0	3.5	HW	3	42	37	80/67	55/54	DX	R-410A	208	3	30.1	45	DAIKIN — AZQ 054	1,2,3,4,5,6,7,8
UV-17-W	CLASSROOM	FLOOR	HIGH	1350	443	75	48	100	180	104.4	2.0	3.5	HW	3	42	37	80/67	55/54	DX	R-410A	208	3	30.1	45	DAIKIN — AZQ 054	1,2,3,4,5,6,7,8
UV-18-W	CLASSROOM	FLOOR	HIGH	1350	440	75	48	100	180	104.4	2.0	3.5	HW	3	42	37	80/67	55/54	DX	R-410A	208	3	30.1	45	DAIKIN — AZQ 054	1,2,3,4,5,6,7,8
UV-19-W	CLASSROOM	FLOOR	HIGH	1350	441	75	48	100	180	104.4	2.0	3.5	HW	3	42	37	80/67	55/54	DX	R-410A	208	3	30.1	45	DAIKIN — AZQ 054	1,2,3,4,5,6,7,8
UV-20-W	CLASSROOM	FLOOR	HIGH	1500	441	75	48	100	180	104.4	2.0	3.5	HW	3	42	37	80/67	55/54	DX	R-410A	208	3	30.1	45	DAIKIN — AZQ 054	1,2,3,4,5,6,7,8
UV-21-W	CLASSROOM	FLOOR	HIGH	1350	439	75	48	100	180	104.4	2.0	3.5	HW	3	42	37	80/67	55/54	DX	R-410A	208	3	30.1	45	DAIKIN — AZQ 054	1,2,3,4,5,6,7,8
UV-22-W	CLASSROOM	FLOOR	HIGH	1350	440	75	48	100	180	104.4	2.0	3.5	HW	3	42	37	80/67	55/54	DX	R-410A	208	3	30.1	45	DAIKIN — AZQ 054	1,2,3,4,5,6,7,8
UV-23-W	CLASSROOM	FLOOR	HIGH	1500	440	75	48	100	180	104.4	2.0	3.5	HW	3	42	37	80/67	55/54	DX	R-410A	208	3	30.1	45	DAIKIN — AZQ 054	1,2,3,4,5,6,7,8
UV-24-W	CLASSROOM	FLOOR	HIGH	1350	441	75	48	100	180	104.4	2.0	3.5	HW	3	42	37	80/67	55/54	DX	R-410A	208	3	30.1	45	DAIKIN — AZQ 054	1,2,3,4,5,6,7,8

REMARKS:
1. PROVIDE MANUFACTURERS DISCONNECT, FACTORY MOUNTED AND WIRED.
2. PROVIDE UNIT WITH MANUFACTURERS THREE SPEED SWITCH SET TO AIRFLOW INDICATED.
3. PROVIDE UNIT WITH FACE AND BYPASS.
4. PROVIDE ANTIQUE IVORY COLOR.
5. UNIT TO COME WITH FACTORY MICROTECH CONTROLLER.
6. PROVIDE BASIC WALL MOUNTED ROOM SENSOR, PT # 910247450.
7. PROVIDE SS DRAIN PAN.
8. PROVIDE MANUFACTURERS WALL SLEEVE.

STEAM UNIT VENTILATOR SCHEDULE																						
TAG	LOCATION	TYPE	AIRSIDE PERFORMANCE			STEAM PERFORMANCE					COOLING PERFORMANCE						VOLT	PHASE	MCA	MAX FUSE	MANUFACTURER & MODEL NO.	NOTES
			FAN SPEED SETTING	SUPPLY (CFM)	MIN. O.A. (CFM)	CAPACITY (MBH)	STEAM PRESSURE (PSI)	E.A.T. (°F)	L.A.T. (°F)	ROWS	TOTAL MBH	SENSIBLE MBH	EAT (DB/WB)	LAT (DB/WB)	COIL TYPE	REFRIGERANT						
UV-1-W	CLASSROOM	FLOOR	HIGH	1500	787	101	2	32	95	3	48	32	80/67	55/54	DX	R-410A	208	3	30.1	45	DAIKIN — AZQ 054	1,2,3,4,5,6,7,8
UV-2-W	CLASSROOM	FLOOR	HIGH	1500	770	101	2	32	95	3	48	32	80/67	55/54	DX	R-410A	208	3	30.1	45	DAIKIN — AZQ 054	1,2,3,4,5,6,7,8
UV-3-W	CLASSROOM	FLOOR	HIGH	1500	743	101	2	32	95	3	48	32	80/67	55/54	DX	R-410A	208	3	30.1	45	DAIKIN — AZQ 054	1,2,3,4,5,6,7,8
UV-4-W	CLASSROOM	FLOOR	HIGH	1500	784	101	2	32	95	3	48	32	80/67	55/54	DX	R-410A	208	3	30.1	45	DAIKIN — AZQ 054	1,2,3,4,5,6,7,8
UV-5-W	CLASSROOM	FLOOR	HIGH	1500	1061	121	2	19	95	3	48	32	80/67	55/54	DX	R-410A	208	3	30.1	45	DAIKIN — AZQ 054	1,2,3,4,5,6,7,8
UV-6-W	CLASSROOM	FLOOR	HIGH	1500	881	108	2	28	95	3	48	32	80/67	55/54	DX	R-410A	208	3	30.1	45	DAIKIN — AZQ 054	1,2,3,4,5,6,7,8
UV-8-W	CLASSROOM	FLOOR	HIGH	1500	465	77	2	46	95	3	48	32	80/67	55/54	DX	R-410A	208	3	30.1	45	DAIKIN — AZQ 054	1,2,3,4,5,6,7,8
UV-9-W	CLASSROOM	FLOOR	HIGH	1500	454	77	2	43	95	3	42	37	80/67	55/54	DX	R-410A	208	3	30.1	45	DAIKIN — AZQ 054	1,2,3,4,5,6,7,8
UV-10-W	CLASSROOM	FLOOR	HIGH	1500	450	77	2	43	95	3	42	37	80/67	55/54	DX	R-410A	208	3	30.1	45	DAIKIN — AZQ 054	1,2,3,4,5,6,7,8
UV-12-W	CLASSROOM	FLOOR	HIGH	1500	458	77	2	43	95	3	42	37	80/67	55/54	DX	R-410A	208	3	30.1	45	DAIKIN — AZQ 054	1,2,3,4,5,6,7,8

REMARKS:
1. PROVIDE MANUFACTURERS DISCONNECT, FACTORY MOUNTED AND WIRED.
2. PROVIDE UNIT WITH MANUFACTURERS THREE SPEED SWITCH SET TO AIRFLOW INDICATED.
3. PROVIDE UNIT WITH STEAM CONTROL VALVE.
4. PROVIDE ANTIQUE IVORY COLOR.
5. UNIT TO COME WITH FACTORY MICROTECH CONTROLLER.
6. PROVIDE BASIC WALL MOUNTED ROOM SENSOR, PT # 910247450.
7. PROVIDE SS DRAIN PAN.
8. PROVIDE MANUFACTURERS WALL SLEEVE.

DEHUMIDIFICATION UNIT SCHEDULE																				
TAG	SERVICE	SUPPLY AIRFLOW (CFM)	MOISTURE REMOVAL (LB/HR)	EXTERNAL STATIC PRESSURE	OUTDOOR AIR (RH BELOW 50%)	COOLING					ELECTRICAL DATA					MAXIMUM WEIGHT (LBS.)	MAXIMUM DIMENSIONS LxWxH (IN.)	MANUFACTURER & MODEL NO.	REMARKS	
						TOTAL CAPACITY (MBH)	SENSIBLE CAPACITY (MBH)	REHEAT CAPACITY (MBH)	EER	REFRIGERANT	VOLTS	PHASE	HZ	FLA	MCA					MOP
DHU-1	BASEMENT	1500	6.5	0.5	450	30.3	18.4	38.4	11.7	R-410A	208	1	60	22.8	28	45	400	46x32x21	DECTRON DRY-O-TRON DS-015	1,2,3,4,5
DHU-2	BASEMENT	1000	6.5	0.5	0	30.3	18.4	38.4	11.7	R-410A	208	1	60	22.8	28	45	400	46x32x21	DECTRON DRY-O-TRON DS-015	1,2,3,4,5

REMARKS:
1. MOTOR TO BE PREMIUM EFFICIENCY, ODP.
2. UNIT TO FIT THROUGH STANDARD 3FT DOOR.
3. PROVIDE MANUFACTURER'S HUMIDITY SENSOR.
4. E.C. TO PROVIDE UNIT DISCONNECT.
5. PROVIDE BACnet INTERFACE.

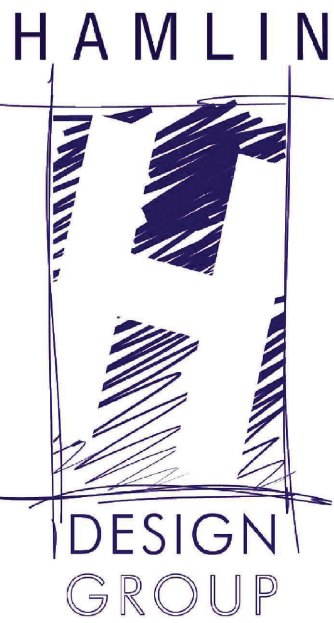
FAN SCHEDULE																
TAG	LOCATION	SERVICE	TYPE	AIRFLOW (CFM)	E.S.P. (IN. W.G.)	RPM	SONES	DRIVE TYPE	MOTOR TYPE	FAN MOTOR DATA					MANUFACTURER & MODEL NO.	NOTES
										HP	W	VOLTS	PHASE	HZ		
EF-1-W	ROOF	CRAWLSPACE	DOWNBLAST	600	0.5	1534	9.1	DIRECT	ECM	1/6	—	120	1	60	GREENHECK G-095-VG	1,2,3,4,5

NOTE:
1. PROVIDE ECM MOTOR (NO MOTOR STARTER).
2. PROVIDE ME-1/D-1 DAMPER WITH ACTUATOR.
3. PROVIDE NEMA-1 TOGGLE SWITCH FACTORY MOUNTED AND WIRED.
4. PROVIDE EC MOTOR WITH INPUTS FOR 0-10V SIGNAL BY TC TO VARY THE SPEED OF THE FAN.
5. PROVIDE CURB.

DIFFUSER, REGISTERS, AND GRILLES														
TAG	MODEL	MOUNTING	FRAME TYPE	MAX CFM	BLOW PATTERN	FACE SIZE	NECK SIZE	VELOCITY (FPM.)	THROW (FT.)	PD	SOUND LEVEL	MATERIAL	MANUFACTURER	REMARKS
SD-1	61DH	DUCT	FLANGED	252	1-WAY	14x8	12x6	600	15	.022	17	STEEL	NAILOR	

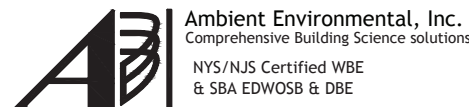
FIN TUBE SCHEDULE										
TAG	CABINET STYLE	CABINET HEIGHT	HEAT CAPACITY BTU/FT	HEAT MEDIUM	AVG WATER TEMP	TUBE SIZE(#TIERS)	FIN SIZE (FIN/IN)	FIN LENGTH	MANUFACTURER & MODEL NO.	REMARKS
FTR-1	SLOPE TOP	24	1190	WATER	170	3/4"(1)	4 1/2 x 3 3/8 (50)	SEE DRAWINGS	STERLING JVB-S20	1,2,3

REMARKS:
1. CONCEAL ALL PIPING BELOW COVER.
2. FIN ENCLOSURE SHALL BE SLOPE TOP.
3. MOUNT FIN 4" A.F.F.

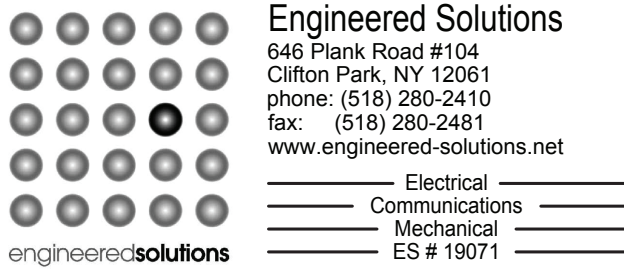


Architect:
Hamlin Design Group
915 Broadway, Suite 101A
Albany, New York 12207
Tel: 518.724.5159
Fax: 518.320.8633
Web: hamlindesigngroup.com

Hazardous Material Consultant:



MEP Engineer:



Client:



Peekskill City School District
1031 Elm St.
Peekskill, NY 10566

Peekskill Reconstruction

SED Project: 66-15-00-01-0-005-020
HDG Project: 201

Oakside Elementary

200 Decatur Ave.,
Peekskill, NY 10566

SED Project: 66-15-00-01-0-008-017
HDG Project: 203

Woodside Elementary

612 Depew St.,
Peekskill, NY 10566

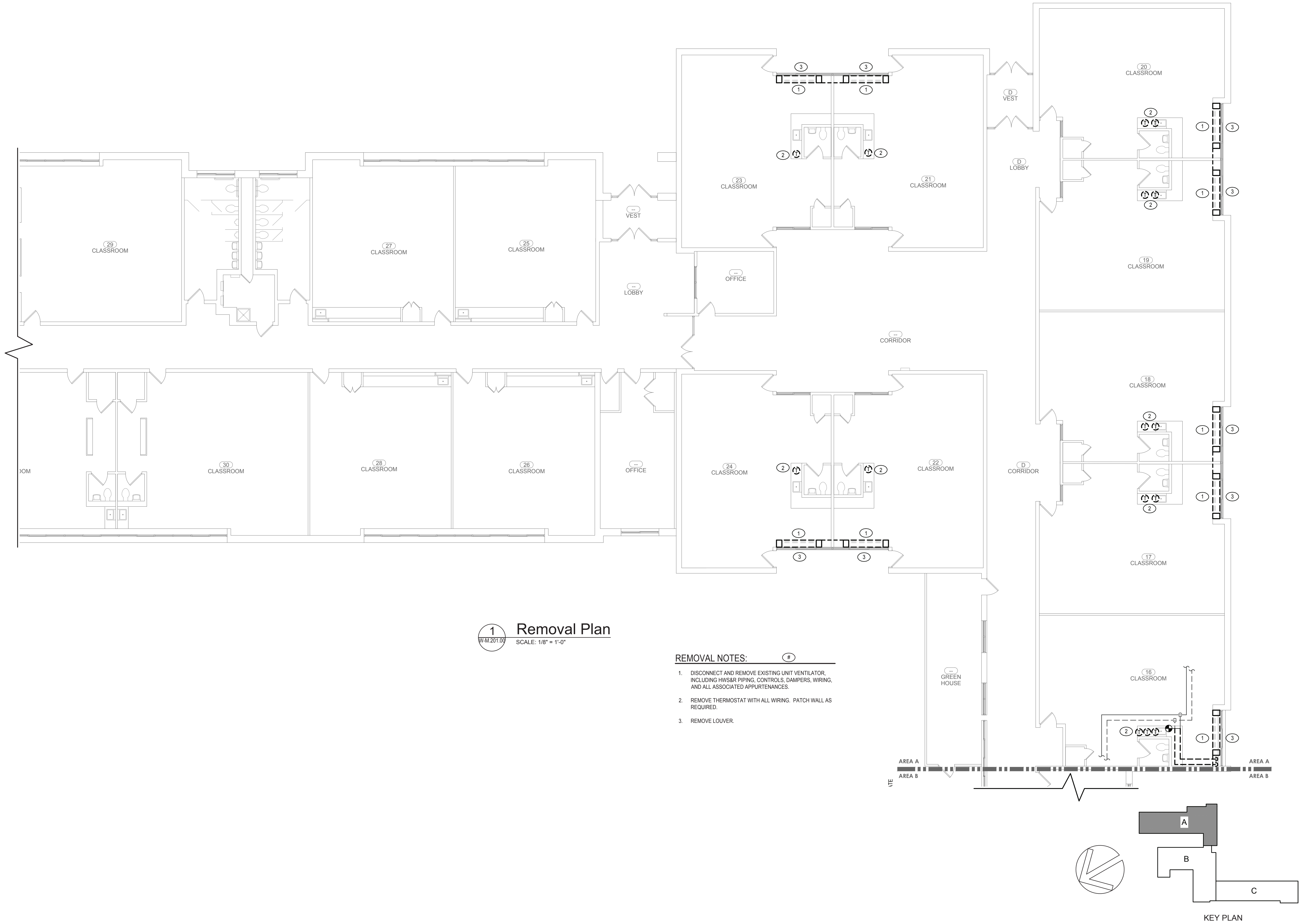
DRAWN BY:
MLB

ISSUE: 03/19/2021



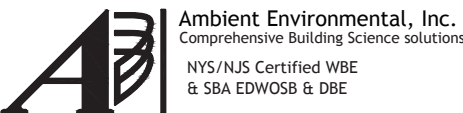
DESCRIPTION
HVAC Schedules

W-M.002.00

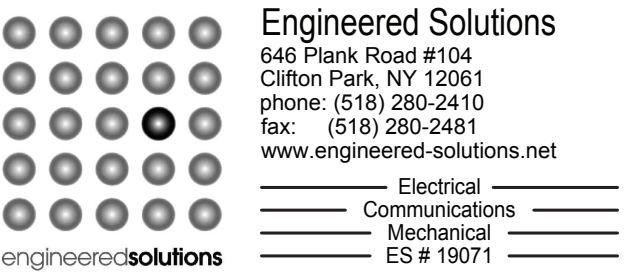


Architect:
Hamlin Design Group
915 Broadway, Suite 101A
Albany, New York 12207
Tel: 518.724.5159
Fax: 518.320.8633
Web: hamlindesigngroup.com

Hazardous Material Consultant:



MEP Engineer:



Client:



Peekskill City School District
1031 Elm St.
Peekskill, NY 10566

Peekskill Reconstruction

SED Project: 66-15-00-01-0-005-020
HDG Project: 201

Oakside Elementary
200 Decatur Ave.,
Peekskill, NY 10566

SED Project: 66-15-00-01-0-008-017
HDG Project: 203

Woodside Elementary
612 Depew St.,
Peekskill, NY 10566

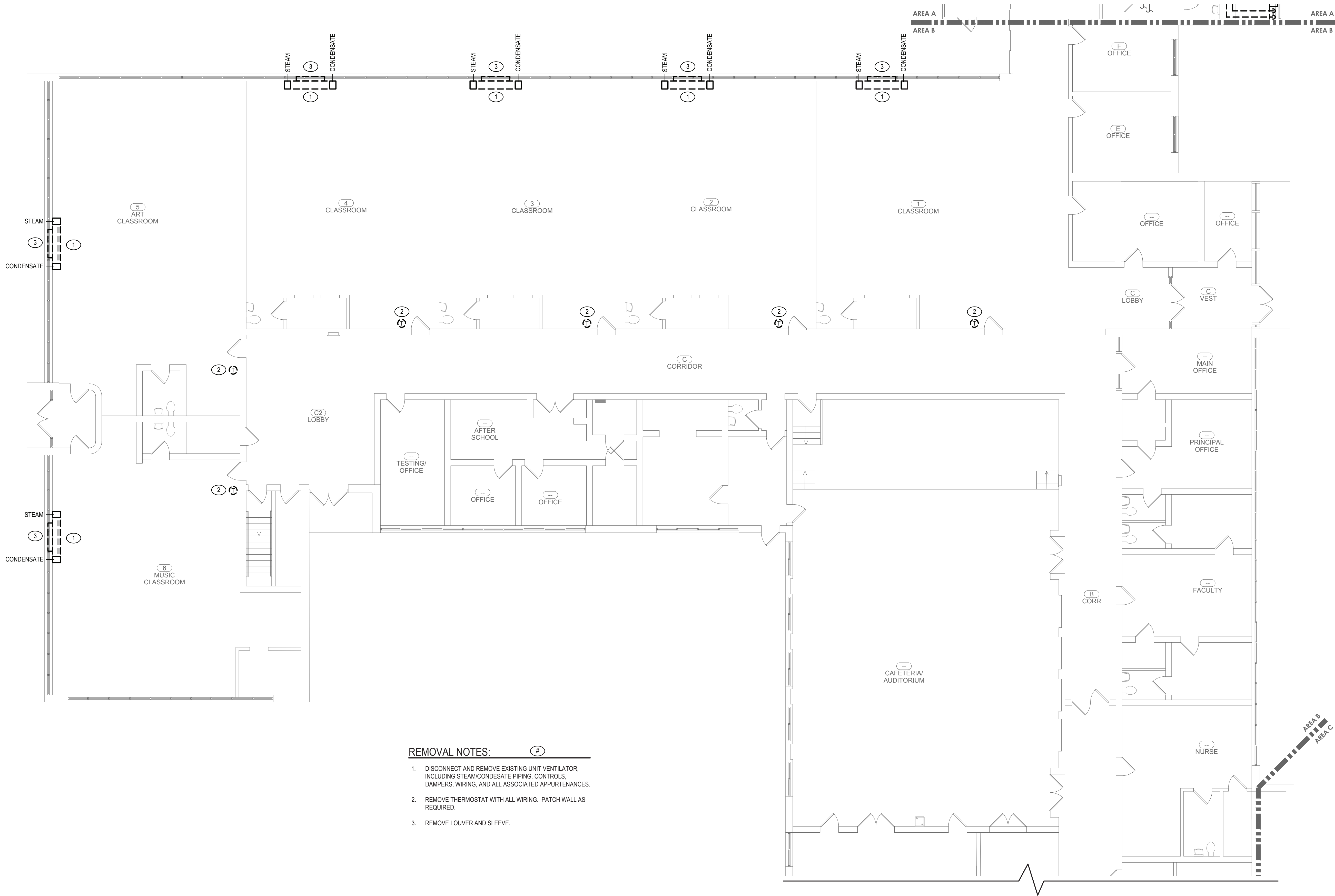
DRAWN BY:
MLB

ISSUE: 03/19/2021



DESCRIPTION
Removal Plan - Area A

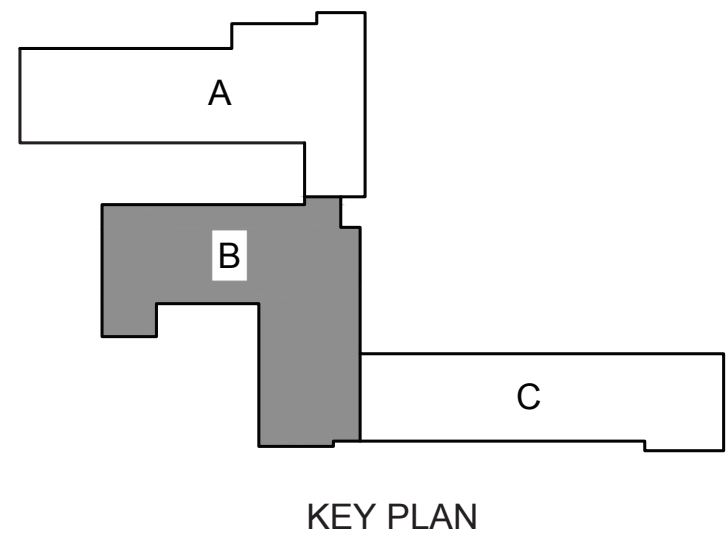
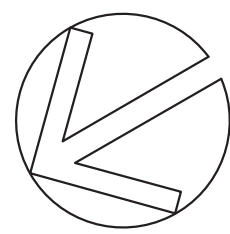
W-M.201.00



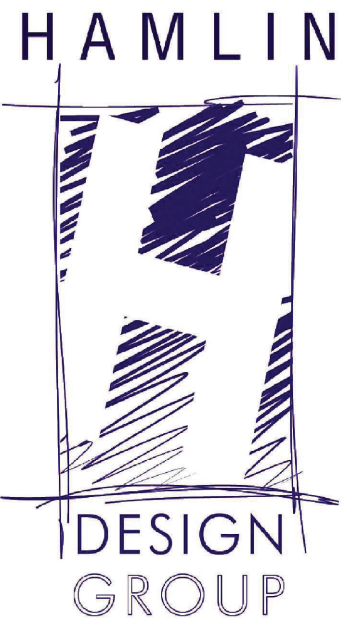
- REMOVAL NOTES:**
1. DISCONNECT AND REMOVE EXISTING UNIT VENTILATOR, INCLUDING STEAM/CONDENSATE PIPING, CONTROLS, DAMPERS, WIRING, AND ALL ASSOCIATED APPURTENANCES.
 2. REMOVE THERMOSTAT WITH ALL WIRING. PATCH WALL AS REQUIRED.
 3. REMOVE LOUVER AND SLEEVE.

1 Removal Plan
SCALE: 1/8" = 1'-0"

ALL WORK ON THIS DRAWING SHALL BE PART OF ALTERNATE NO. 2



KEY PLAN

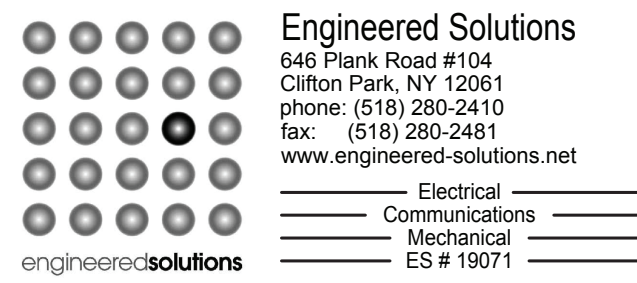


Architect:
Hamlin Design Group
915 Broadway, Suite 101A
Albany, New York 12207
Tel: 518.724.5159
Fax: 518.320.8633
Web: hamlindesigngroup.com

Hazardous Material Consultant:



MEP Engineer:



Client:



Peekskill City School District
1031 Elm St.
Peekskill, NY 10566

Peekskill Reconstruction

SED Project: 66-15-00-01-0-005-020
HDG Project: 201

Oakside Elementary

200 Decatur Ave.,
Peekskill, NY 10566

SED Project: 66-15-00-01-0-008-017
HDG Project: 203

Woodside Elementary

612 Depew St.,
Peekskill, NY 10566

DRAWN BY:
MLB

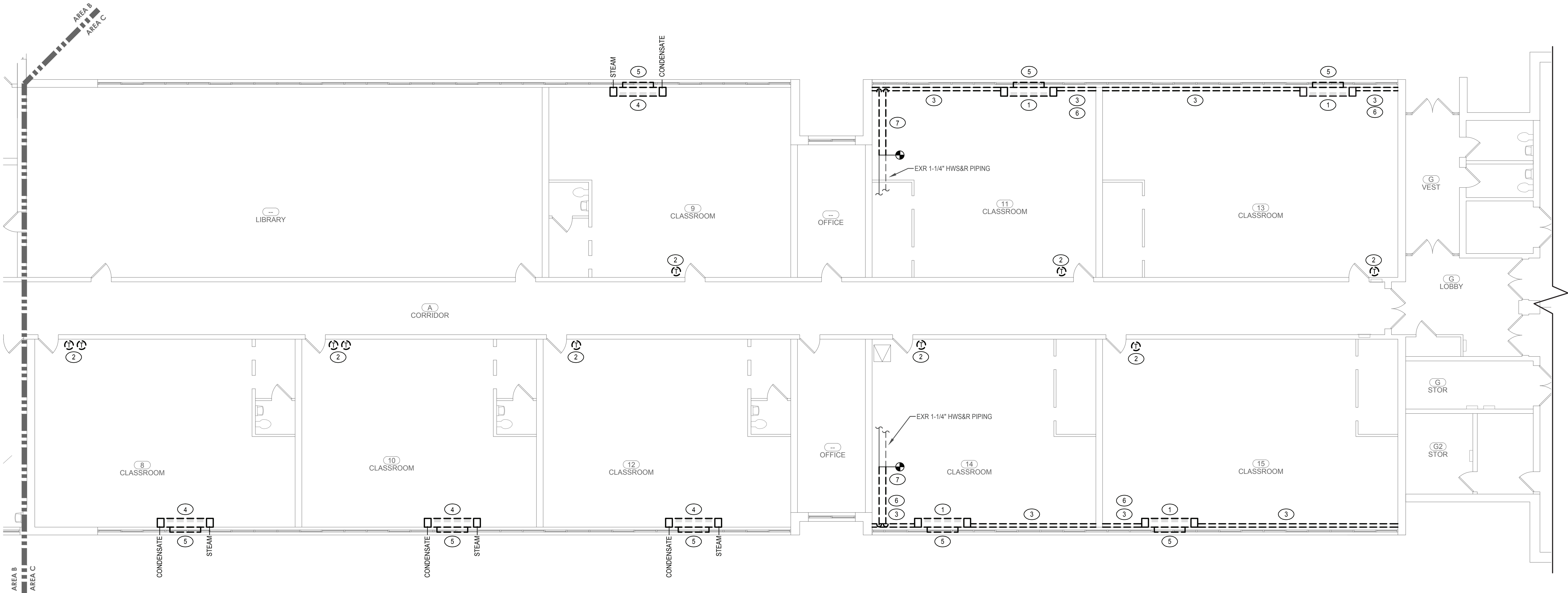
ISSUE: 03/19/2021



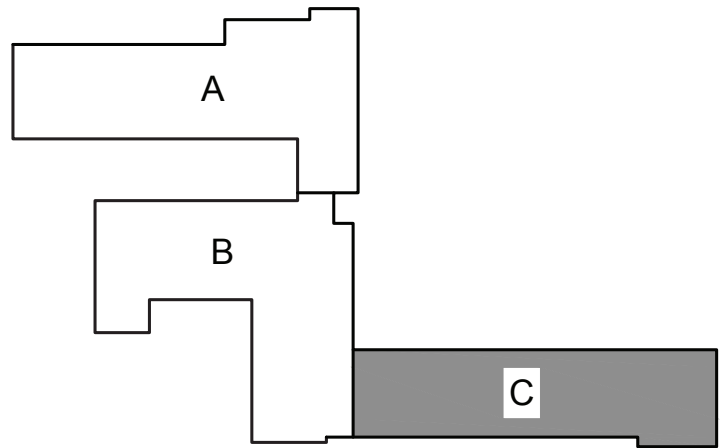
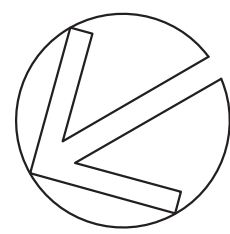
DESCRIPTION
Removal Plan - Area B

W-M.202.00

(ALTERNATE NO. 2)



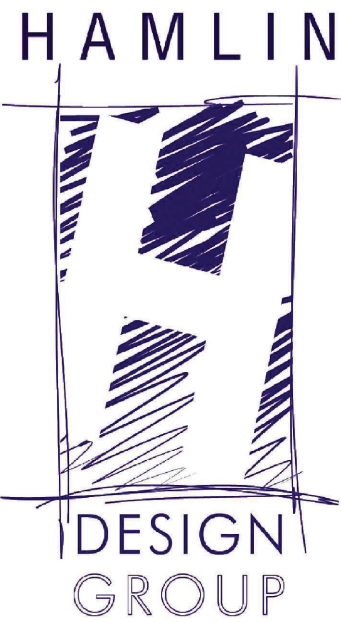
1 Removal Plan
W-M.203.00 SCALE: 1/8" = 1'-0"



KEY PLAN

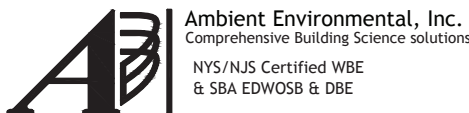
REMOVAL NOTES:

1. DISCONNECT AND REMOVE EXISTING UNIT VENTILATOR, INCLUDING HWS&R PIPING, CONTROLS, DAMPERS, WIRING, AND ALL ASSOCIATED APPURTENANCES.
2. REMOVE THERMOSTAT WITH ALL WIRING. PATCH WALL AS REQUIRED.
3. REMOVE FIN TUBE WITH ENCLOSURE, WALL MOUNTING BRACKETS. REMOVE PIPING AS REQUIRED FOR NEW WORK.
4. DISCONNECT AND REMOVE EXISTING UNIT VENTILATOR, INCLUDING STEAM AND CONDESATE PIPING, CONTROLS, DAMPERS, WIRING, AND ALL ASSOCIATED APPURTENANCES.
5. REMOVE LOVER AND SLEEVE.
6. PATCH WALL TO MATCH EXISTING.
7. REMOVE PIPING WITH ALL SUPPORTS AND HANGERS.



Architect:
Hamlin Design Group
915 Broadway, Suite 101A
Albany, New York 12207
Tel: 518.724.5159
Fax: 518.320.8633
Web: hamlindesigngroup.com

Hazardous Material Consultant:



MEP Engineer:



Client:



Peekskill City School District
1031 Elm St.
Peekskill, NY 10566

Peekskill Reconstruction

SED Project: 66-15-00-01-0-005-020
HDG Project: 201

Oakside Elementary

200 Decatur Ave.,
Peekskill, NY 10566

SED Project: 66-15-00-01-0-008-017
HDG Project: 203

Woodside Elementary

612 Depew St.,
Peekskill, NY 10566

DRAWN BY:
MLB

ISSUE: 03/19/2021



DESCRIPTION
Removal Plan - Area C

W-M.203.00

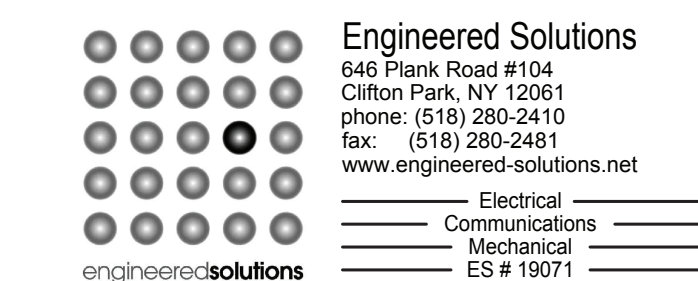


Architect:
Hamlin Design Group
915 Broadway, Suite 101A
Albany, New York 12207
Tel: 518.724.5159
Fax: 518.320.8633
Web: hamlindesigngroup.com

Hazardous Material Consultant:



MEP Engineer:



Client:



Peekskill City School District
1031 Elm St.
Peekskill, NY 10566

Peekskill Reconstruction

SED Project: 66-15-00-01-0-005-020
HDG Project: 201

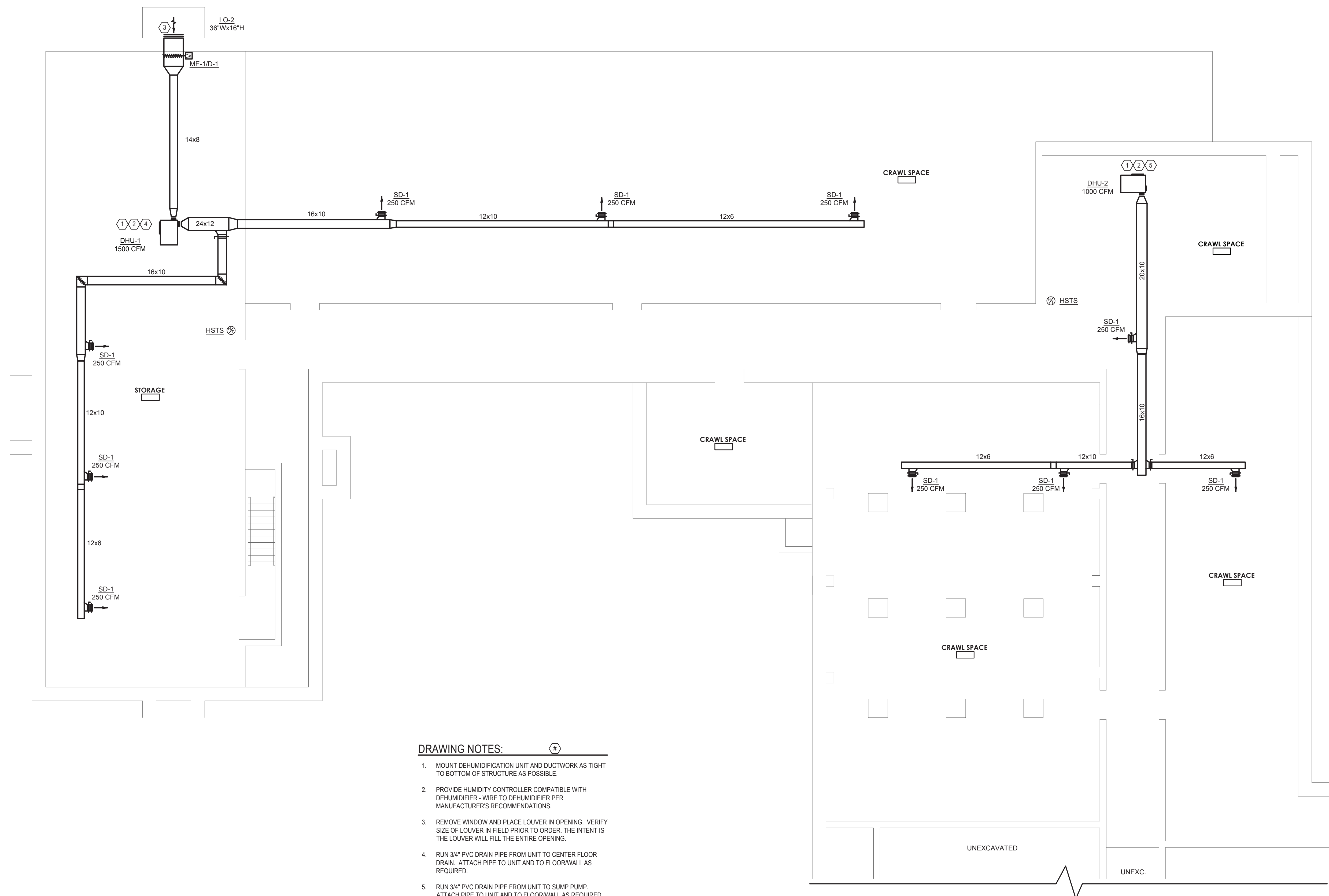
Oakside Elementary

200 Decatur Ave.,
Peekskill, NY 10566

SED Project: 66-15-00-01-0-008-017
HDG Project: 203

Woodside Elementary

612 Depew St.,
Peekskill, NY 10566

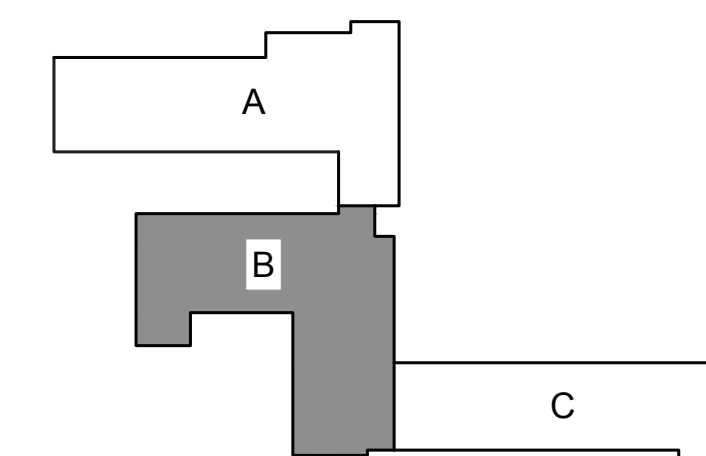
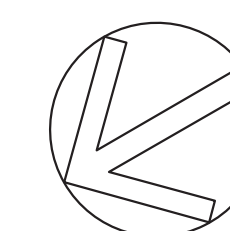


DRAWING NOTES:

1. MOUNT DEHUMIDIFICATION UNIT AND DUCTWORK AS TIGHT TO BOTTOM OF STRUCTURE AS POSSIBLE.
2. PROVIDE HUMIDITY CONTROLLER COMPATIBLE WITH DEHUMIDIFIER - WIRE TO DEHUMIDIFIER PER MANUFACTURER'S RECOMMENDATIONS.
3. REMOVE WINDOW AND PLACE LOUVER IN OPENING. VERIFY SIZE OF LOUVER IN FIELD PRIOR TO ORDERING. THE INTENT IS THE LOUVER WILL FILL THE ENTIRE OPENING.
4. RUN 3/4" PVC DRAIN PIPE FROM UNIT TO CENTER FLOOR DRAIN. ATTACH PIPE TO UNIT AND TO FLOORWALL AS REQUIRED.
5. RUN 3/4" PVC DRAIN PIPE FROM UNIT TO SUMP PUMP. ATTACH PIPE TO UNIT AND TO FLOORWALL AS REQUIRED.

1 HVAC Plan
W-M.401.00 SCALE: 1/8" = 1'-0"

ALL WORK ON THIS DRAWING SHALL BE PART OF ALTERNATE NO. 1



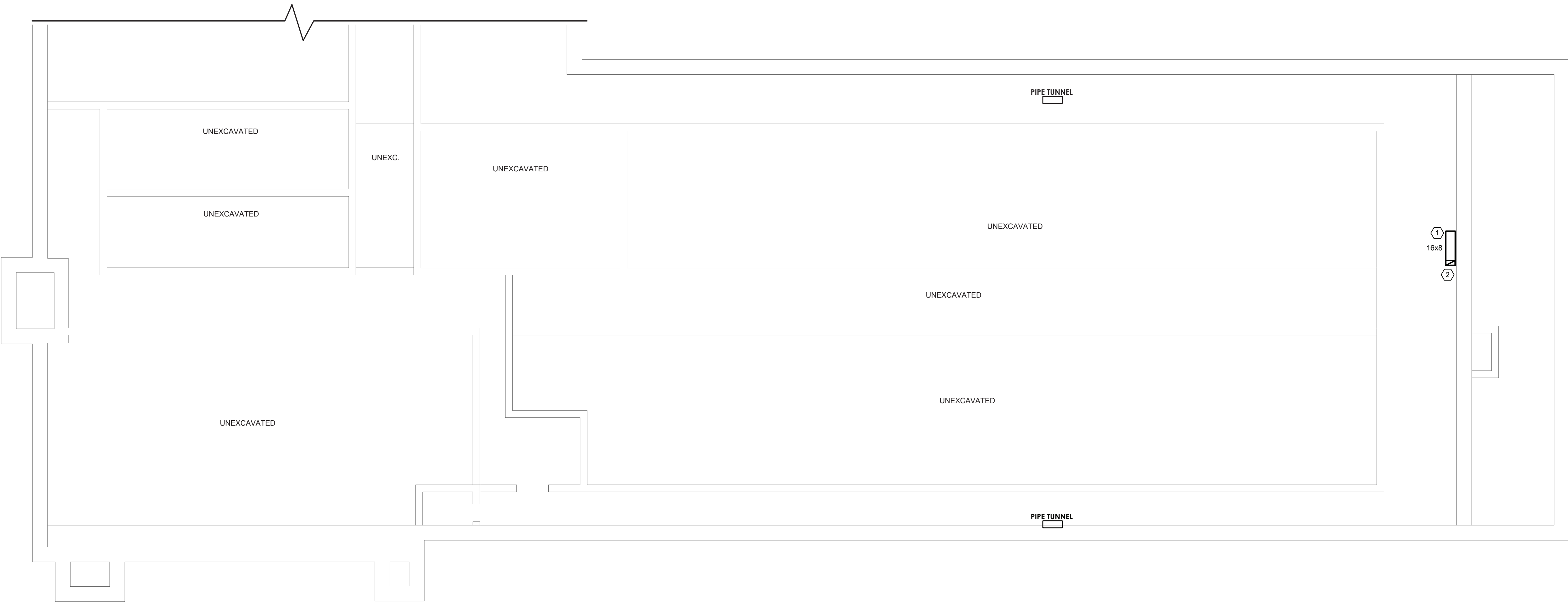
KEY PLAN



DESCRIPTION
Basement HVAC Plan - Area B

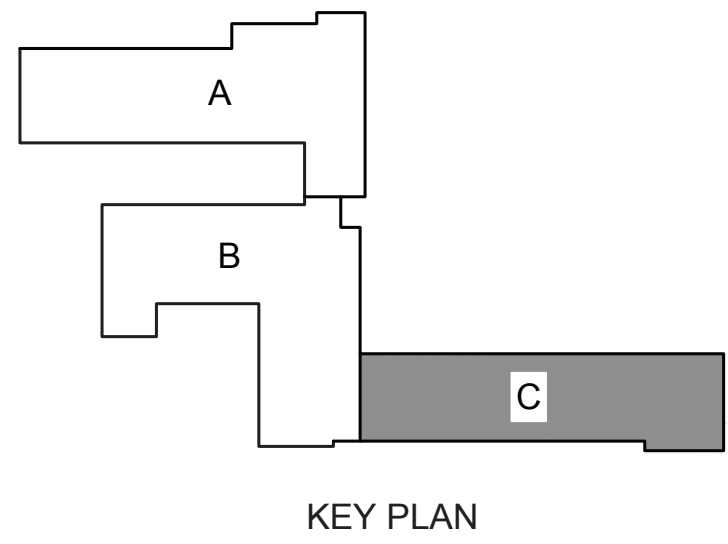
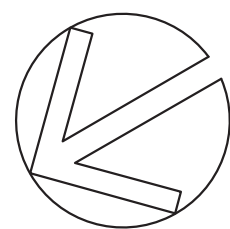
W-M.401.00

(ALTERNATE NO. 1)



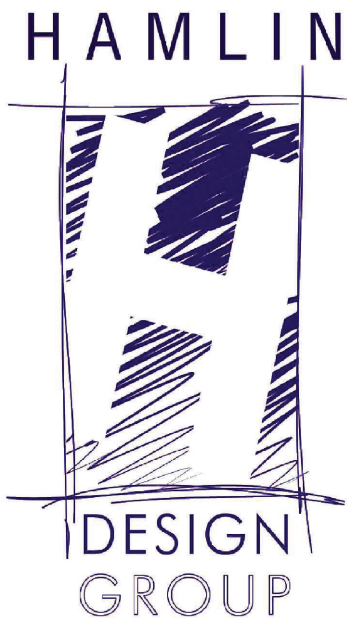
1 HVAC Plan
W-M.402.00 SCALE: 1/8" = 1'-0"

ALL WORK ON THIS DRAWING SHALL BE PART OF ALTERNATE NO. 1



KEY PLAN

- DRAWING NOTES: #
1. PROVIDE OPEN ENDED DUCT, WITH 1/4" GALVANIZED MESH SCREEN ON OPEN END.
 2. PROVIDE 16x8 DUCT UP TO EF-1-W ON ROOF.



Architect:
Hamlin Design Group
915 Broadway, Suite 101A
Albany, New York 12207
Tel: 518.724.5159
Fax: 518.320.8633
Web: hamlindesigngroup.com

Hazardous Material Consultant:



Ambient Environmental, Inc.
Comprehensive Building Science solutions
NYS/NAS Certified WBE
E SBA EDW058 & DBE

MEP Engineer:



Engineered Solutions
648 Plank Road #104
Clifton Park, NY 12061
phone: (518) 280-2410
fax: (518) 280-2481
www.engineered-solutions.net

Electrical
Communications
Mechanical
ES # 19071

Client:



Peekskill City School District
1031 Elm St.
Peekskill, NY 10566

Peekskill Reconstruction

SED Project: 66-15-00-01-0-005-020
HDG Project: 201

Oakside Elementary

200 Decatur Ave.,
Peekskill, NY 10566

SED Project: 66-15-00-01-0-008-017
HDG Project: 203

Woodside Elementary

612 Depew St.,
Peekskill, NY 10566

DRAWN BY:
MLB

ISSUE: 03/19/2021

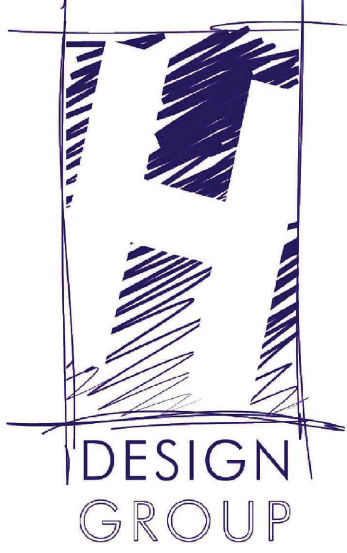


DESCRIPTION
Basement HVAC Plan - Area C

W-M.402.00

(ALTERNATE NO. 1)

HAMLIN

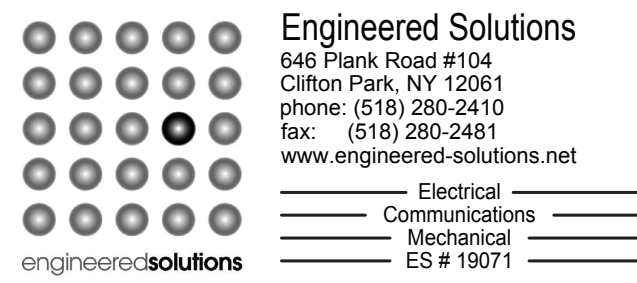


Architect:
Hamlin Design Group
915 Broadway, Suite 101A
Albany, New York 12207
Tel: 518.724.5159
Fax: 518.320.8633
Web: hamlindesigngroup.com

Hazardous Material Consultant:



MEP Engineer:



Client:



Peekskill City School District
1031 Elm St.
Peekskill, NY 10566

Peekskill Reconstruction

SED Project: 66-15-00-01-0-005-020
HDG Project: 201

Oakside Elementary

200 Decatur Ave.,
Peekskill, NY 10566

SED Project: 66-15-00-01-0-008-017
HDG Project: 203

Woodside Elementary

612 Depew St.,
Peekskill, NY 10566

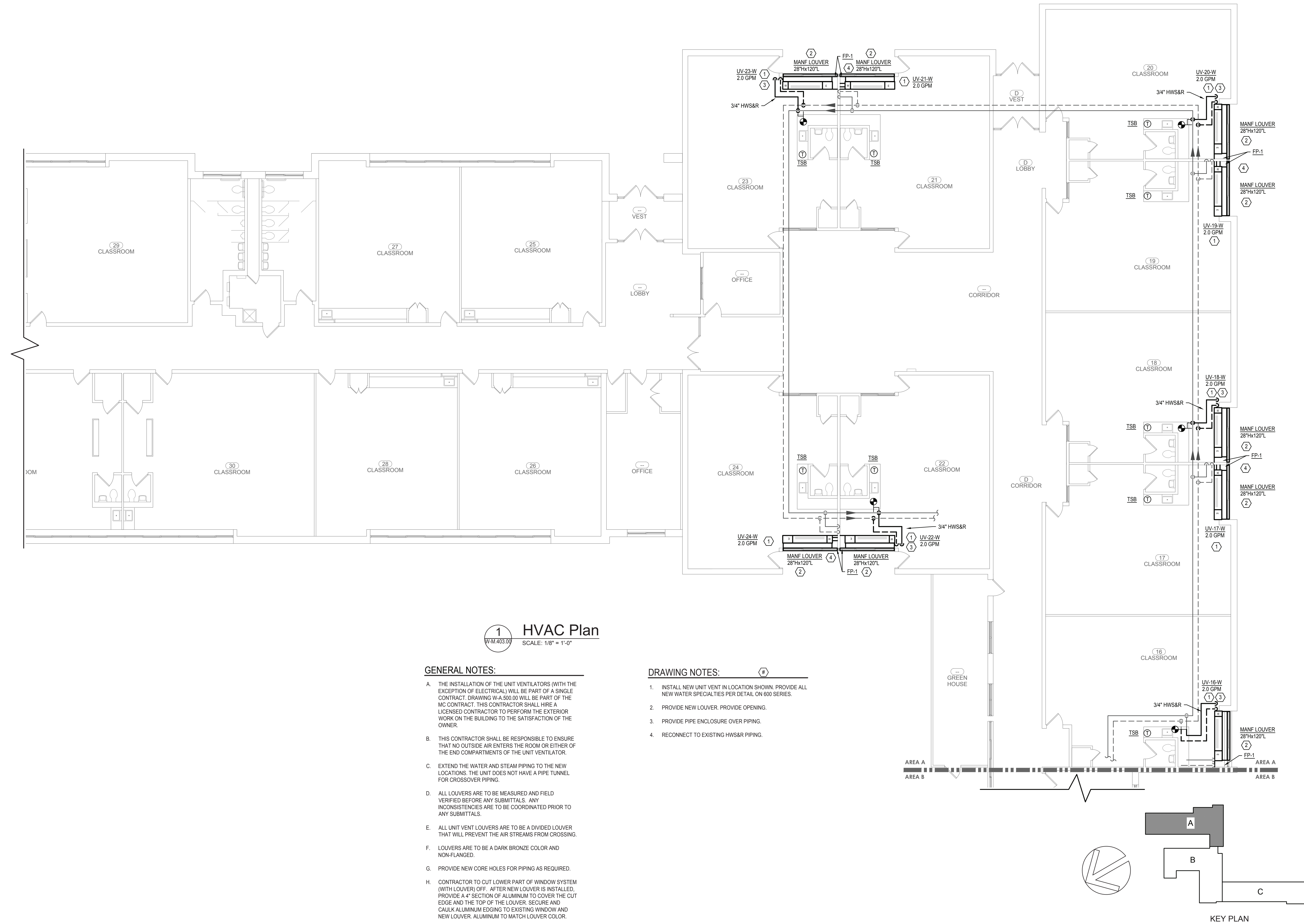
DRAWN BY:
MLB

ISSUE: 03/19/2021



DESCRIPTION
First Floor HVAC Plan - Area A

W-M.403.00



1 HVAC Plan

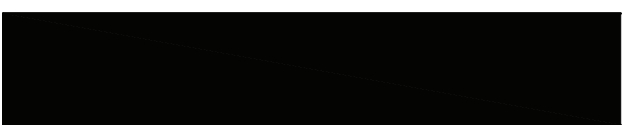
W-M.403.00 SCALE: 1/8" = 1'-0"

GENERAL NOTES:

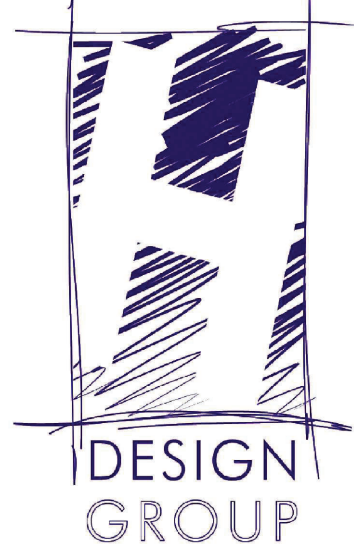
- THE INSTALLATION OF THE UNIT VENTILATORS (WITH THE EXCEPTION OF ELECTRICAL) WILL BE PART OF A SINGLE CONTRACT. DRAWING W-A.500.00 WILL BE PART OF THE MC CONTRACT. THIS CONTRACTOR SHALL HIRE A LICENSED CONTRACTOR TO PERFORM THE EXTERIOR WORK ON THE BUILDING TO THE SATISFACTION OF THE OWNER.
- THIS CONTRACTOR SHALL BE RESPONSIBLE TO ENSURE THAT NO OUTSIDE AIR ENTERS THE ROOM OR EITHER OF THE END COMPARTMENTS OF THE UNIT VENTILATOR.
- EXTEND THE WATER AND STEAM PIPING TO THE NEW LOCATIONS. THE UNIT DOES NOT HAVE A PIPE TUNNEL FOR CROSSOVER PIPING.
- ALL LOUVERS ARE TO BE MEASURED AND FIELD VERIFIED BEFORE ANY SUBMITTALS. ANY INCONSISTENCIES ARE TO BE COORDINATED PRIOR TO ANY SUBMITTALS.
- ALL UNIT VENT LOUVERS ARE TO BE A DIVIDED LOUVER THAT WILL PREVENT THE AIR STREAMS FROM CROSSING.
- LOUVERS ARE TO BE A DARK BRONZE COLOR AND NON-FLANGED.
- PROVIDE NEW CORE HOLES FOR PIPING AS REQUIRED.
- CONTRACTOR TO CUT LOWER PART OF WINDOW SYSTEM (WITH LOUVER) OFF. AFTER NEW LOUVER IS INSTALLED, PROVIDE A 4" SECTION OF ALUMINUM TO COVER THE CUT EDGE AND THE TOP OF THE LOUVER. SECURE AND CAULK ALUMINUM EDGING TO EXISTING WINDOW AND NEW LOUVER. ALUMINUM TO MATCH LOUVER COLOR.

DRAWING NOTES:

- INSTALL NEW UNIT VENT IN LOCATION SHOWN. PROVIDE ALL NEW WATER SPECIALTIES PER DETAIL ON 600 SERIES.
- PROVIDE NEW LOUVER. PROVIDE OPENING.
- PROVIDE PIPE ENCLOSURE OVER PIPING.
- RECONNECT TO EXISTING HWS&R PIPING.



HAMLIN



Architect:
Hamlin Design Group
915 Broadway, Suite 101A
Albany, New York 12207
Tel: 518.724.5159
Fax: 518.320.8633
Web: hamlindesigngroup.com

Hazardous Material Consultant:



MEP Engineer:



Client:



Peekskill City School District
1031 Elm St.
Peekskill, NY 10566

Peekskill Reconstruction

SED Project: 66-15-00-01-0-005-020
HDG Project: 201

Oakside Elementary

200 Decatur Ave.,
Peekskill, NY 10566

SED Project: 66-15-00-01-0-008-017
HDG Project: 203

Woodside Elementary

612 Depew St.,
Peekskill, NY 10566

DRAWN BY:
MLB

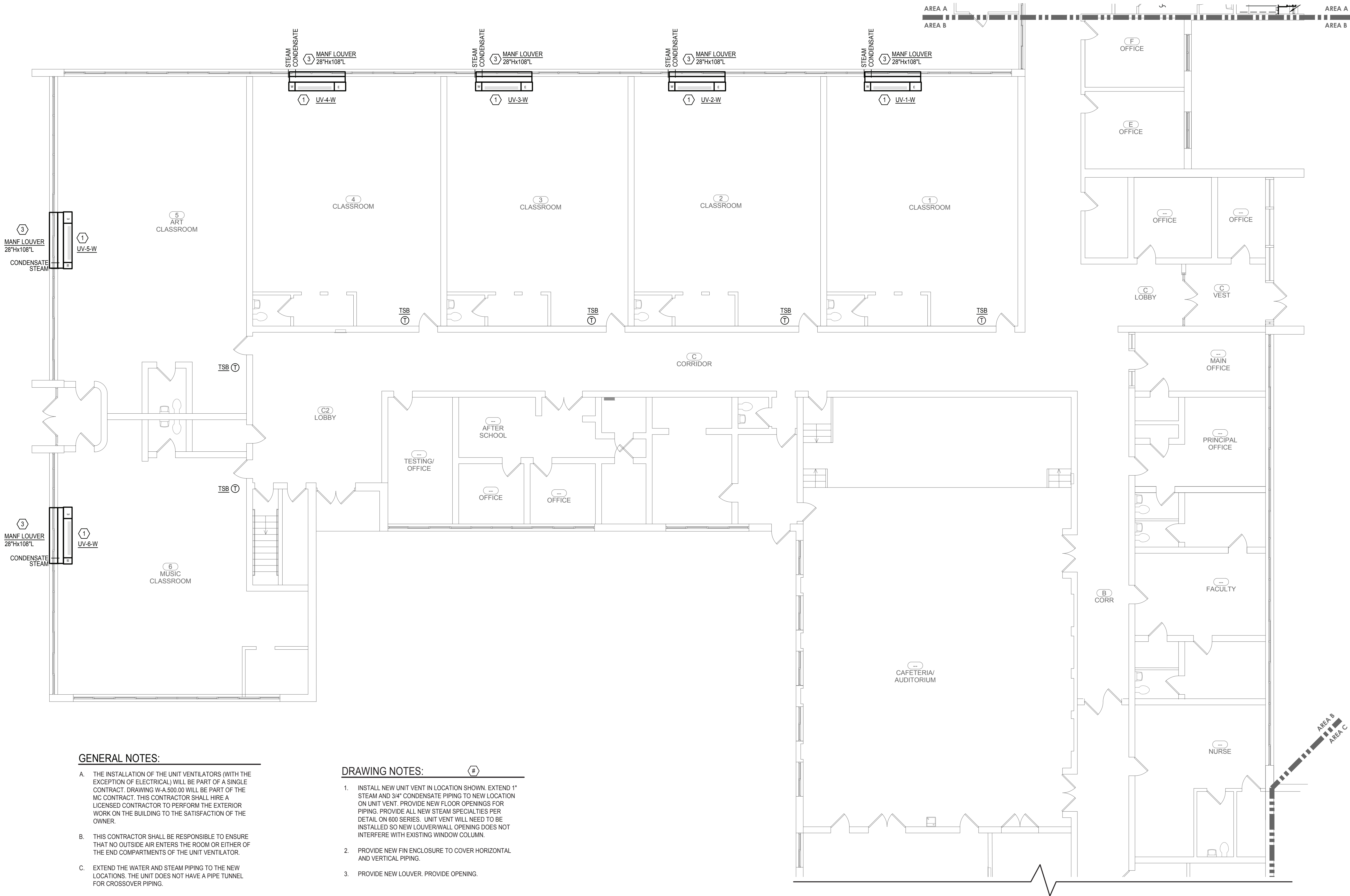
ISSUE: 03/19/2021



DESCRIPTION
First Floor HVAC Plan - Area B

W-M.404.00

(ALTERNATE NO. 2)



GENERAL NOTES:

- A. THE INSTALLATION OF THE UNIT VENTILATORS (WITH THE EXCEPTION OF ELECTRICAL) WILL BE PART OF A SINGLE CONTRACT. DRAWING W-A-500.00 WILL BE PART OF THE MC CONTRACT. THIS CONTRACTOR SHALL HIRE A LICENSED CONTRACTOR TO PERFORM THE EXTERIOR WORK ON THE BUILDING TO THE SATISFACTION OF THE OWNER.
- B. THIS CONTRACTOR SHALL BE RESPONSIBLE TO ENSURE THAT NO OUTSIDE AIR ENTERS THE ROOM OR EITHER OF THE END COMPARTMENTS OF THE UNIT VENTILATOR.
- C. EXTEND THE WATER AND STEAM PIPING TO THE NEW LOCATIONS. THE UNIT DOES NOT HAVE A PIPE TUNNEL FOR CROSSOVER PIPING.
- D. ALL LOUVERS ARE TO BE MEASURED AND FIELD VERIFIED BEFORE ANY SUBMITTALS. ANY INCONSISTENCIES ARE TO BE COORDINATED PRIOR TO ANY SUBMITTALS.
- E. ALL UNIT VENT LOUVERS ARE TO BE A DIVIDED LOUVER THAT WILL PREVENT THE AIR STREAMS FROM CROSSING.
- F. LOUVERS ARE TO BE A DARK BRONZE COLOR AND NON-FLANGED.
- G. PROVIDE NEW CORE HOLES FOR PIPING AS REQUIRED.

DRAWING NOTES:

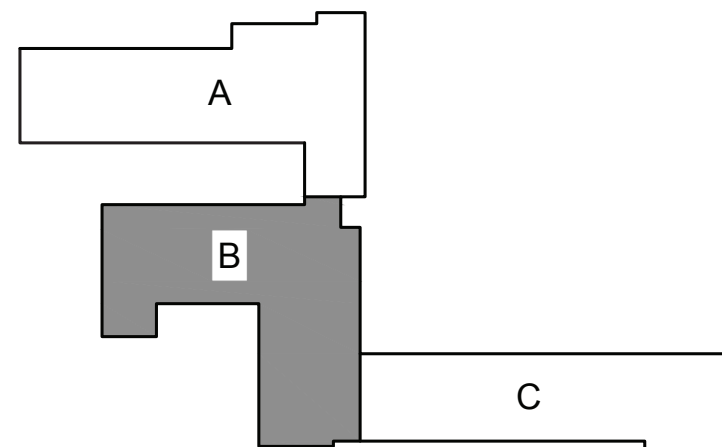
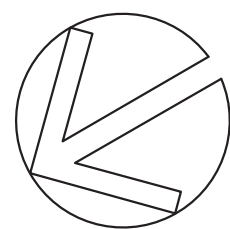
1. INSTALL NEW UNIT VENT IN LOCATION SHOWN. EXTEND 1" STEAM AND 3/4" CONDENSATE PIPING TO NEW LOCATION ON UNIT VENT. PROVIDE NEW FLOOR OPENINGS FOR PIPING. PROVIDE ALL NEW STEAM SPECIALTIES PER DETAIL ON 600 SERIES. UNIT VENT WILL NEED TO BE INSTALLED SO NEW LOUVER/WALL OPENING DOES NOT INTERFERE WITH EXISTING WINDOW COLUMN.
2. PROVIDE NEW FIN ENCLOSURE TO COVER HORIZONTAL AND VERTICAL PIPING.
3. PROVIDE NEW LOUVER. PROVIDE OPENING.



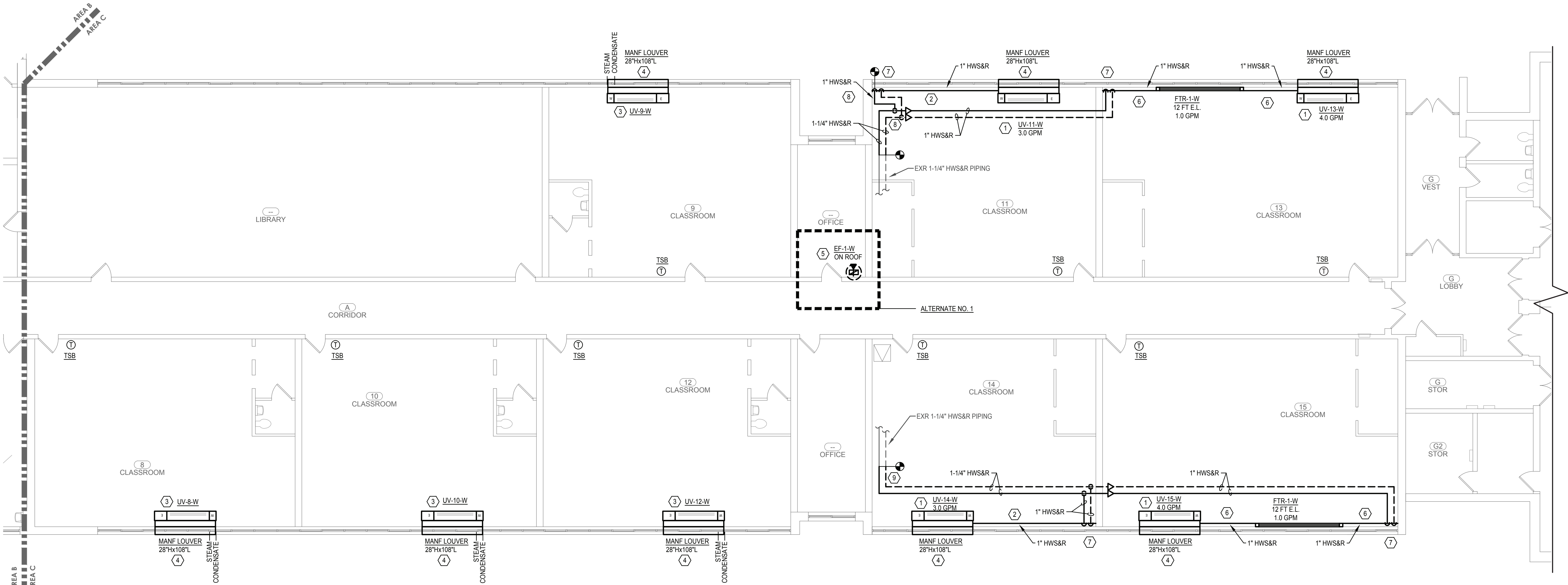
HVAC Plan

SCALE: 1/8" = 1'-0"

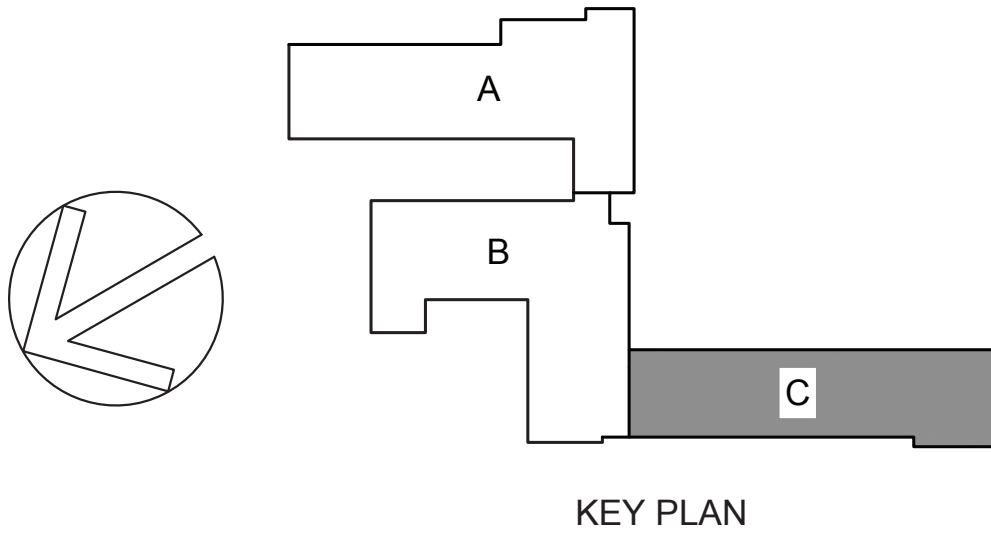
ALL WORK ON THIS DRAWING SHALL BE PART OF ALTERNATE NO. 2



KEY PLAN



1 HVAC Plan
W-M.405.00 SCALE: 1/8" = 1'-0"



GENERAL NOTES:

- THE INSTALLATION OF THE UNIT VENTILATORS (WITH THE EXCEPTION OF ELECTRICAL) WILL BE PART OF A SINGLE CONTRACT. DRAWING W-A.500.00 WILL BE PART OF THE MC CONTRACT. THIS CONTRACTOR SHALL HIRE A LICENSED CONTRACTOR TO PERFORM THE EXTERIOR WORK ON THE BUILDING TO THE SATISFACTION OF THE OWNER.
- THIS CONTRACTOR SHALL BE RESPONSIBLE TO ENSURE THAT NO OUTSIDE AIR ENTERS THE ROOM OR EITHER OF THE END COMPARTMENTS OF THE UNIT VENTILATOR.
- EXTEND THE WATER AND STEAM PIPING TO THE NEW LOCATIONS. THE UNIT DOES NOT HAVE A PIPE TUNNEL FOR CROSSOVER PIPING.
- ALL LOUVERS ARE TO BE MEASURED AND FIELD VERIFIED BEFORE ANY SUBMITTALS. ANY INCONSISTENCIES ARE TO BE COORDINATED PRIOR TO ANY SUBMITTALS.
- ALL UNIT VENT LOUVERS ARE TO BE A DIVIDED LOUVER THAT WILL PREVENT THE AIR STREAMS FROM CROSSING.
- LOUVERS ARE TO BE A DARK BRONZE COLOR AND NON-FLANGED.
- PROVIDE NEW CORE HOLES FOR PIPING AS REQUIRED.
- CONTRACTOR TO CUT WINDOW SIL FLUSH WITH EXISTING WALL. THIS WOULD BE FOR ALL ROOMS THIS AREA.

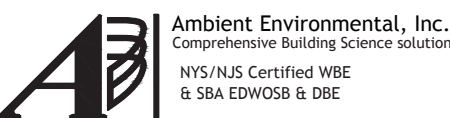
DRAWING NOTES:

- INSTALL NEW UNIT VENT IN LOCATION SHOWN. CONNECT TO EXISTING HWS&R PIPING. PROVIDE ALL NEW WATER SPECIALTIES PER DETAIL ON 600 SERIES.
- PROVIDE STERLING FTR HORIZONTAL PIPE ENCLOSURE (NO LOUVERS) TO COVER PIPES STACKED ON WALL.
- INSTALL NEW UNIT VENT IN LOCATION SHOWN. EXTEND 1" STEAM AND 3/4" CONDENSATE PIPING TO NEW LOCATION ON UNIT VENT. PROVIDE NEW FLOOR OPENINGS FOR PIPING. PROVIDE ALL NEW STEAM SPECIALTIES PER DETAIL ON 600 SERIES. UNIT VENT WILL NEED TO BE INSTALLED SO NEW LOUVER/WALL OPENING DOES NOT INTERFERE WITH EXISTING WINDOW COLUMN.
- PROVIDE NEW LOUVER. PROVIDE OPENING.
- PROVIDE NEW EXHAUST FAN ON ROOF AND RUN 16" DUCT DOWN TO BASEMENT. PROVIDE CHASE. PROVIDE FIRE DAMPER (FRD-B) AT FLOOR LINE WITH ACCESS DOOR IN DUCT AND IN CHASE.
- FIN ENCLOSURE TO RUN FROM UNIT TO WALL.
- PROVIDE PIPE ENCLOSURE OVER VERTICAL PIPING.
- PROVIDE AIR VENT AT TOP OF PIPING, SUPPLY AND RETURN.

Architect:

Hamlin Design Group
915 Broadway, Suite 101A
Albany, New York 12207
Tel: 518.724.5159
Fax: 518.320.8633
Web: hamlindesigngroup.com

Hazardous Material Consultant:



MEP Engineer:



Client:



Peekskill City School District
1031 Elm St.
Peekskill, NY 10566

Peekskill Reconstruction

SED Project: 66-15-00-01-0-005-020
HDG Project: 201

Oakside Elementary

200 Decatur Ave.,
Peekskill, NY 10566

SED Project: 66-15-00-01-0-008-017
HDG Project: 203

Woodside Elementary

612 Depew St.,
Peekskill, NY 10566

DRAWN BY:
MLB

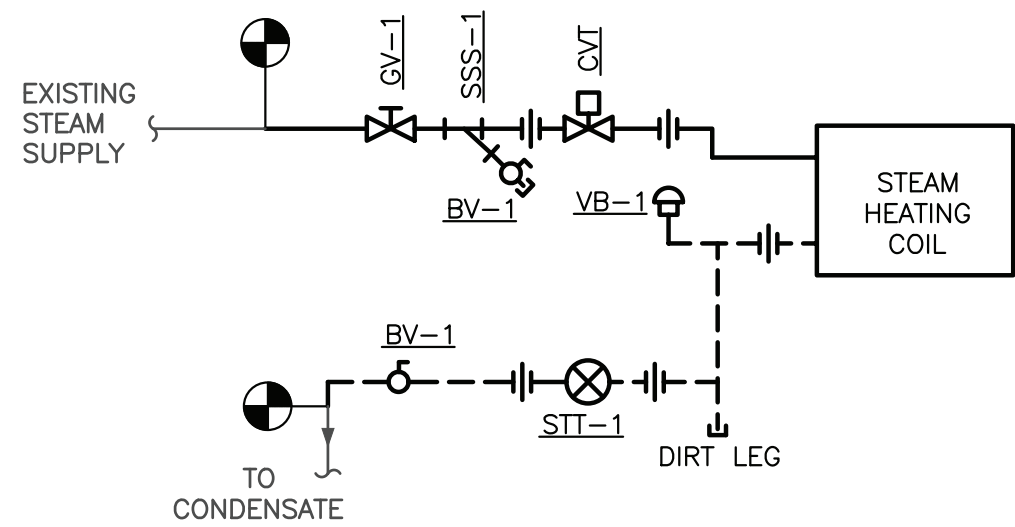
ISSUE: 03/19/2021



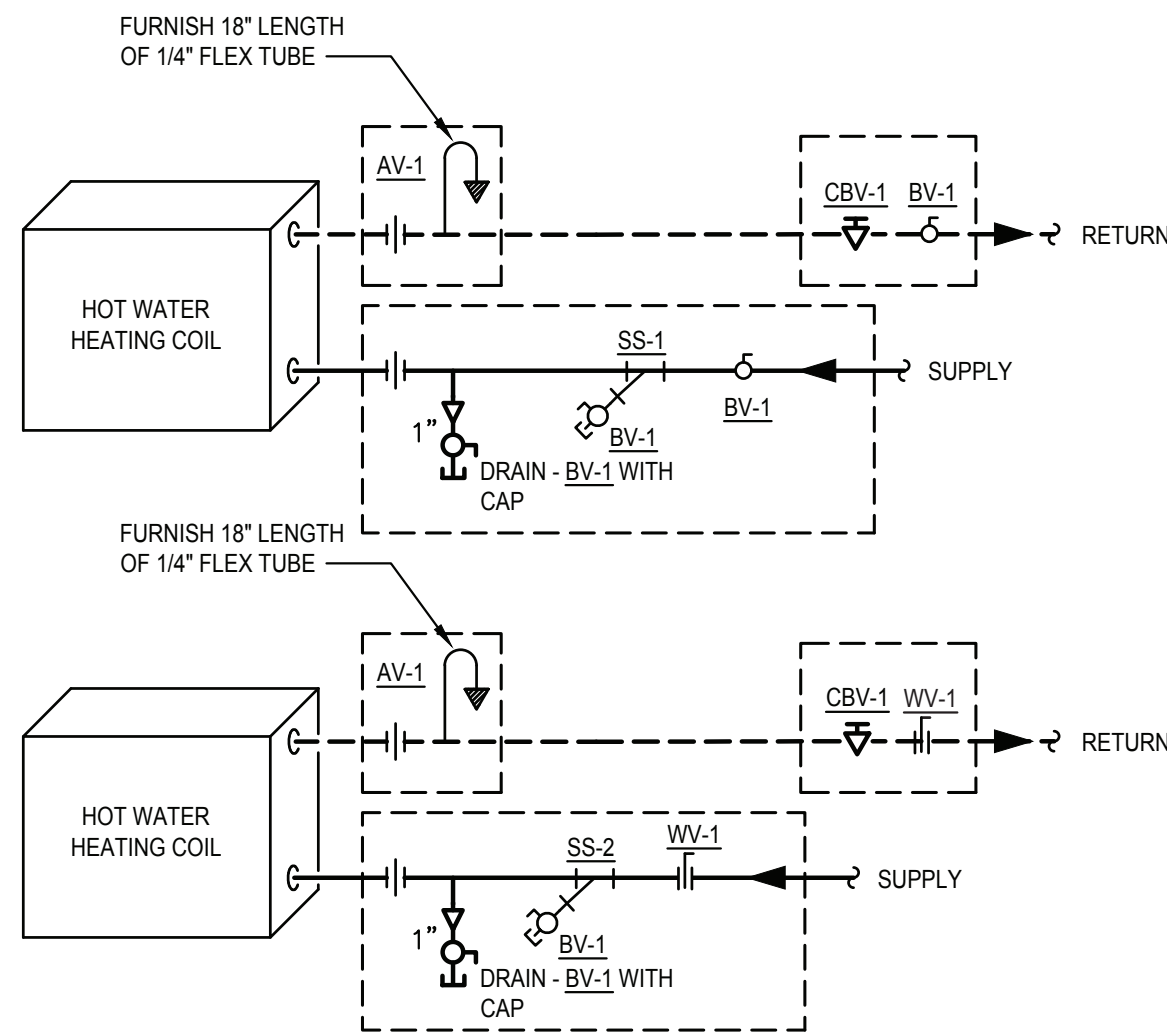
DESCRIPTION
First Floor HVAC Plan - Area C

W-M.405.00

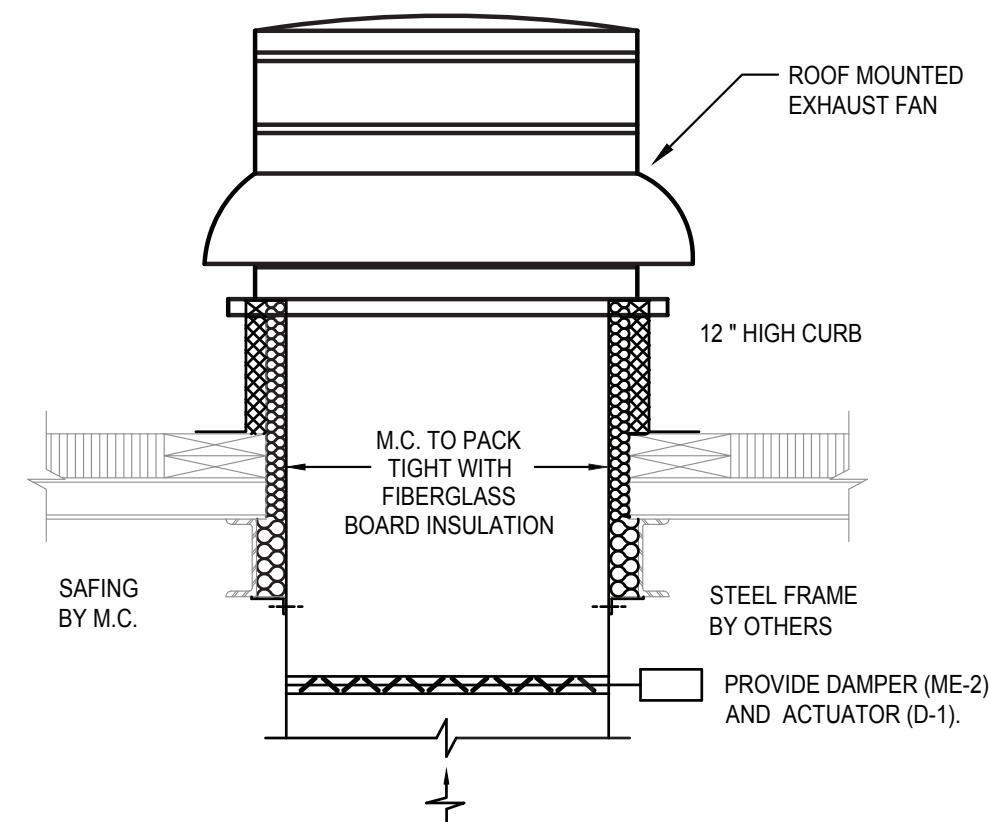
(PARTIAL ALTERNATE NO. 1)



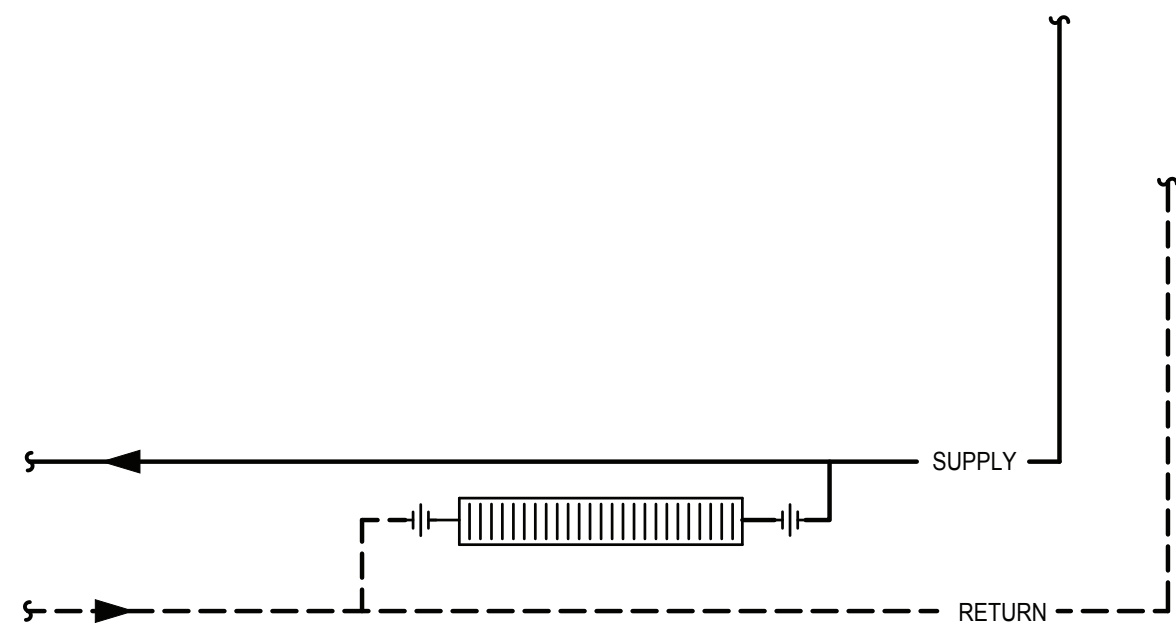
1 STEAM UV HEATING COIL DIAGRAM
SCALE : NONE



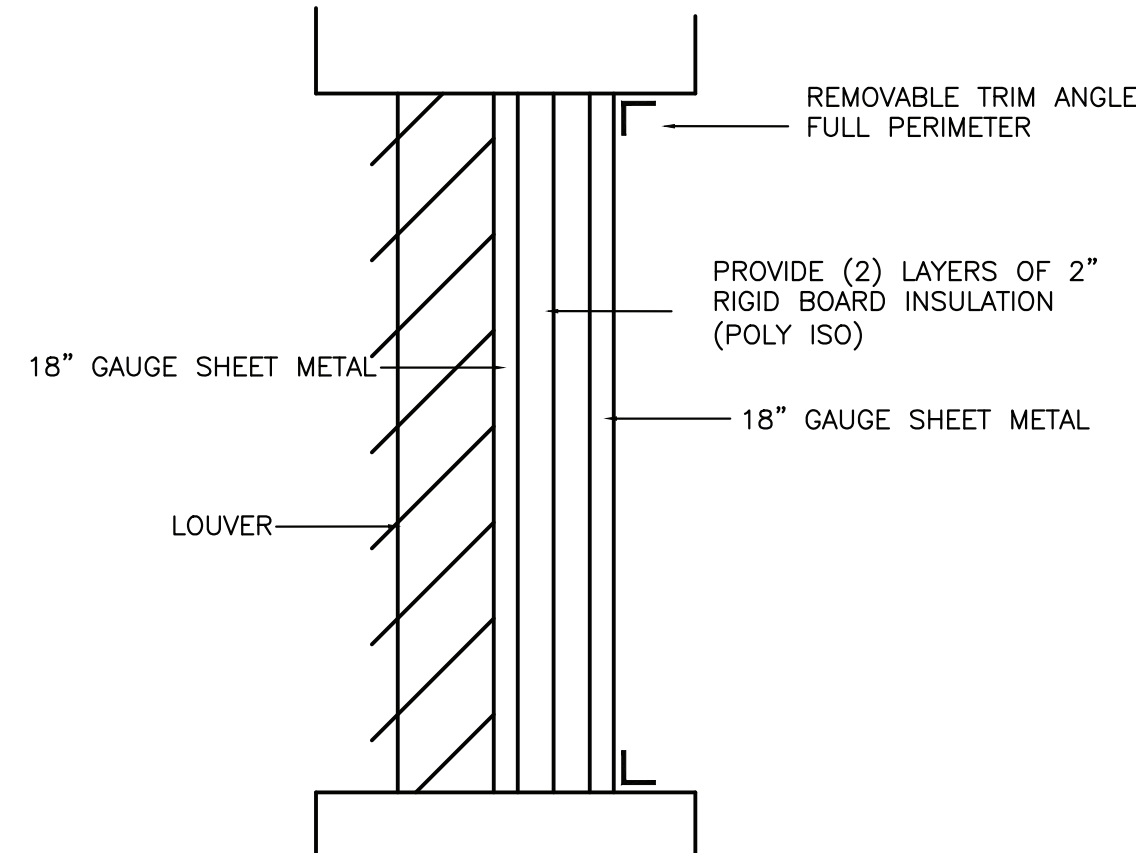
2 TYPICAL UV COIL PIPING DIAGRAM
SCALE : NONE
NOTES:
1. FCV SIZED TO MATCH FLOW.
2. PROVIDE UNIONS ON COIL AND CONTROL VALVE CONNECTIONS.
3. AREAS SHOWN IN DASHED BOXES WILL BE ALLOWED FOR COIL KITS.
4. COILS KITS THAT ARE SUPPLIED WITH FLEXIBLE HOSES WILL BE REJECTED WITHOUT REVIEW.



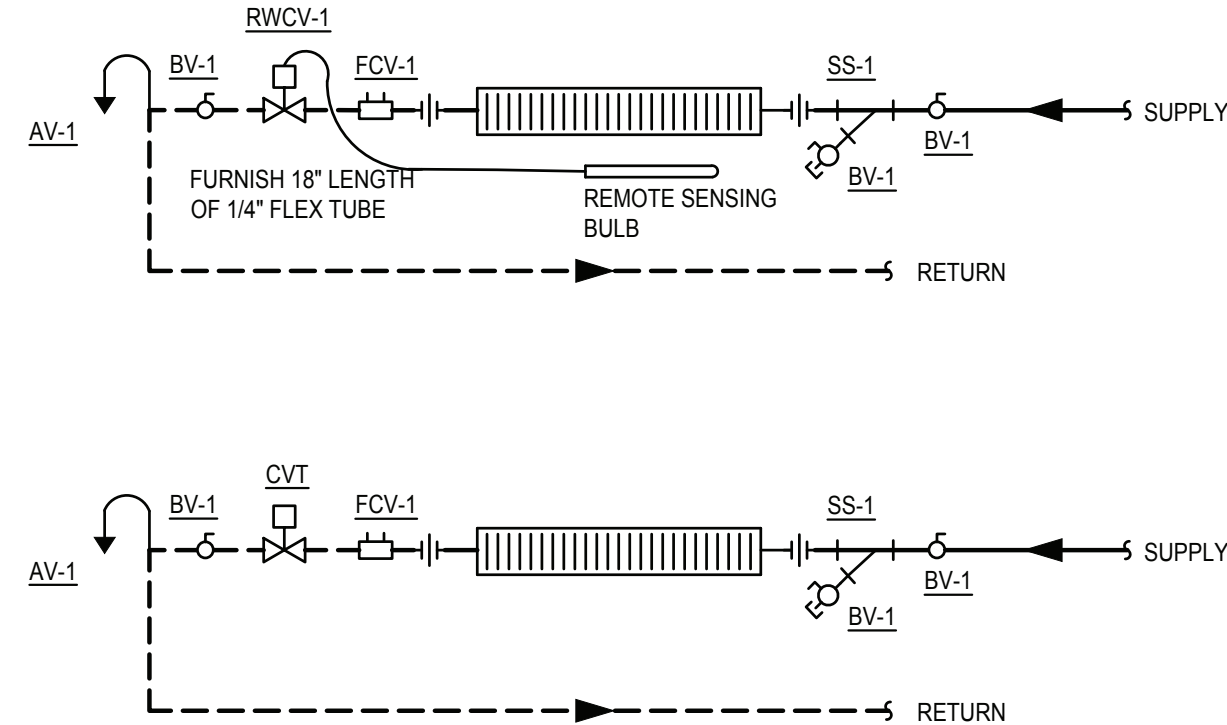
3 DOWNBLAST EXHAUST FAN DIAGRAM
SCALE : NONE



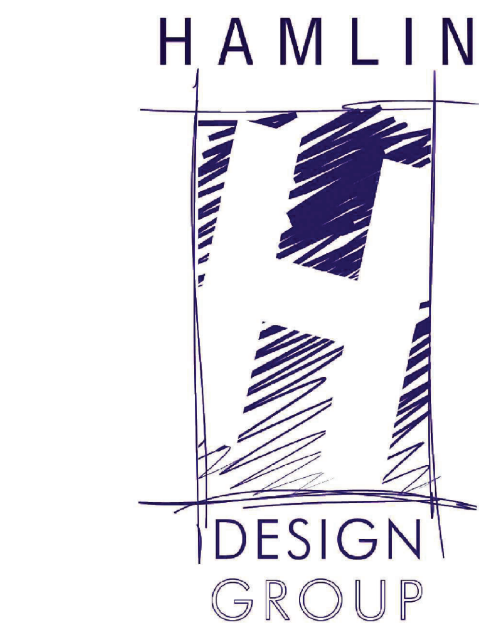
4 TYPICAL FIN TUBE PIPING DIAGRAM
SCALE : NONE
NOTES:
1. REFER TO PIPING DETAIL FOR FIN SPECIALTIES.
2. RUN ALL PIPING AND FIN UNDER FIN COVER.



5 LOUVER AND INSULATION DETAIL
SCALE : NONE
BLANK OFF INACTIVE LOUVER AS SHOWN.

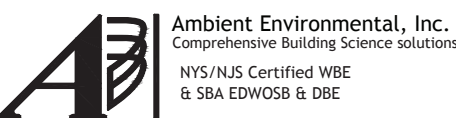


6 TYPICAL FIN TUBE PIPING DIAGRAM (HW)
SCALE : NONE
NOTES:
1. FIN TUBE MFR. TO FURNISH ACCESS DOORS AT ALL VALVE LOCATIONS.
2. WHERE INDICATED ON PLANS OR TEMPERATURE CONTROL DIAGRAM, FURNISH OTHER TYPE CONTROL VALVE BY TEMPERATURE CONTROL CONTRACTOR WHERE INDICATED ON PLANS OR TEMPERATURE CONTROL DIAGRAM.
3. FCV SIZED TO MATCH FLOW.



Architect:
Hamlin Design Group
915 Broadway, Suite 101A
Albany, New York 12207
Tel: 518.724.5159
Fax: 518.320.8633
Web: hamlindesigngroup.com

Hazardous Material Consultant:



MEP Engineer:

Engineered Solutions
648 Plank Road #104
Clifton Park, NY 12061
phone: (518) 280-2410
fax: (518) 280-2481
www.engineered-solutions.net
Electrical
Communications
Mechanical
ES # 19071

Client:



Peekskill City School District
1031 Elm St.
Peekskill, NY 10566

Peekskill Reconstruction

SED Project: 66-15-00-01-0-005-020
HDG Project: 201

Oakside Elementary

200 Decatur Ave.,
Peekskill, NY 10566

SED Project: 66-15-00-01-0-008-017
HDG Project: 203

Woodside Elementary

612 Depew St.,
Peekskill, NY 10566

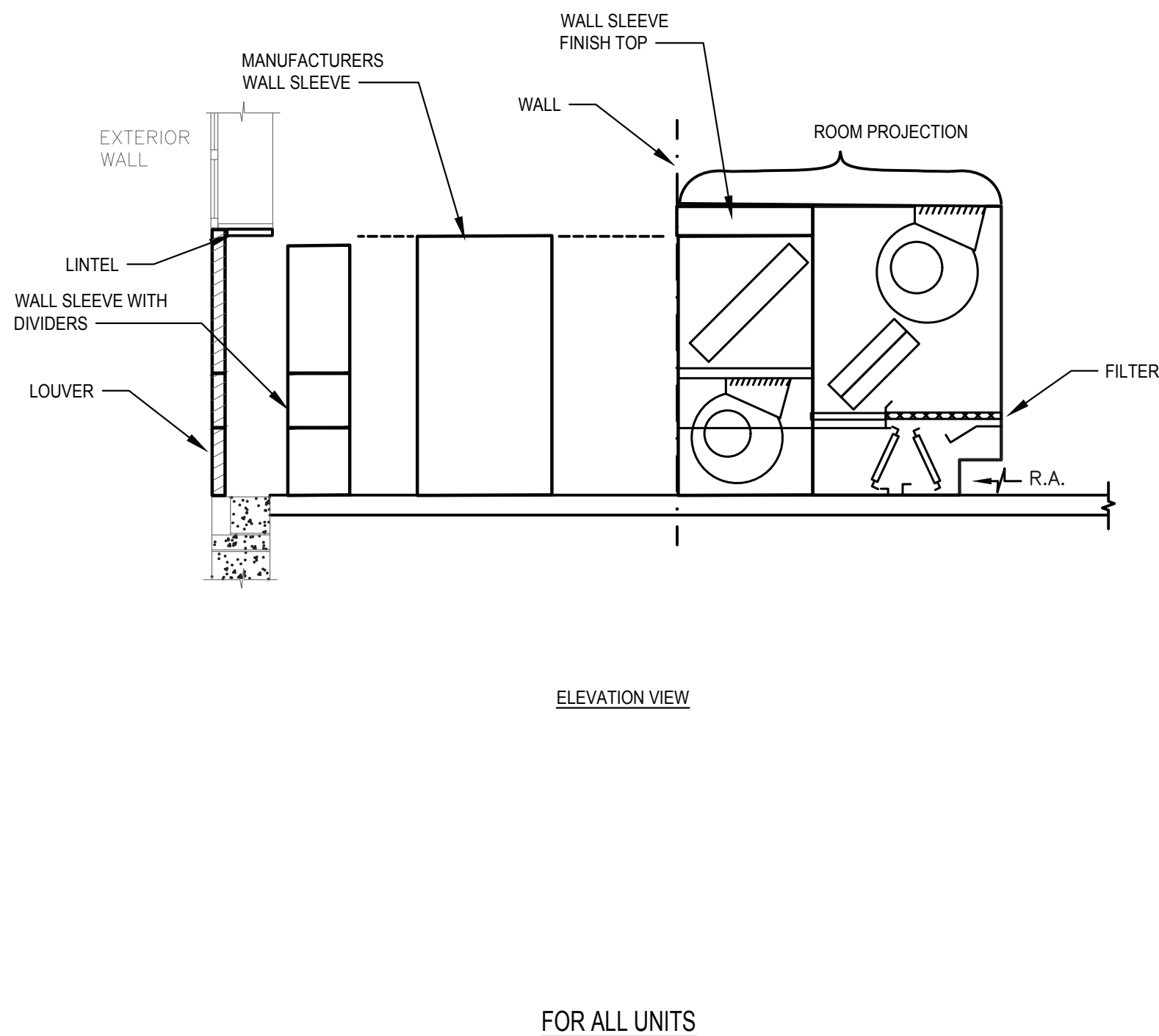
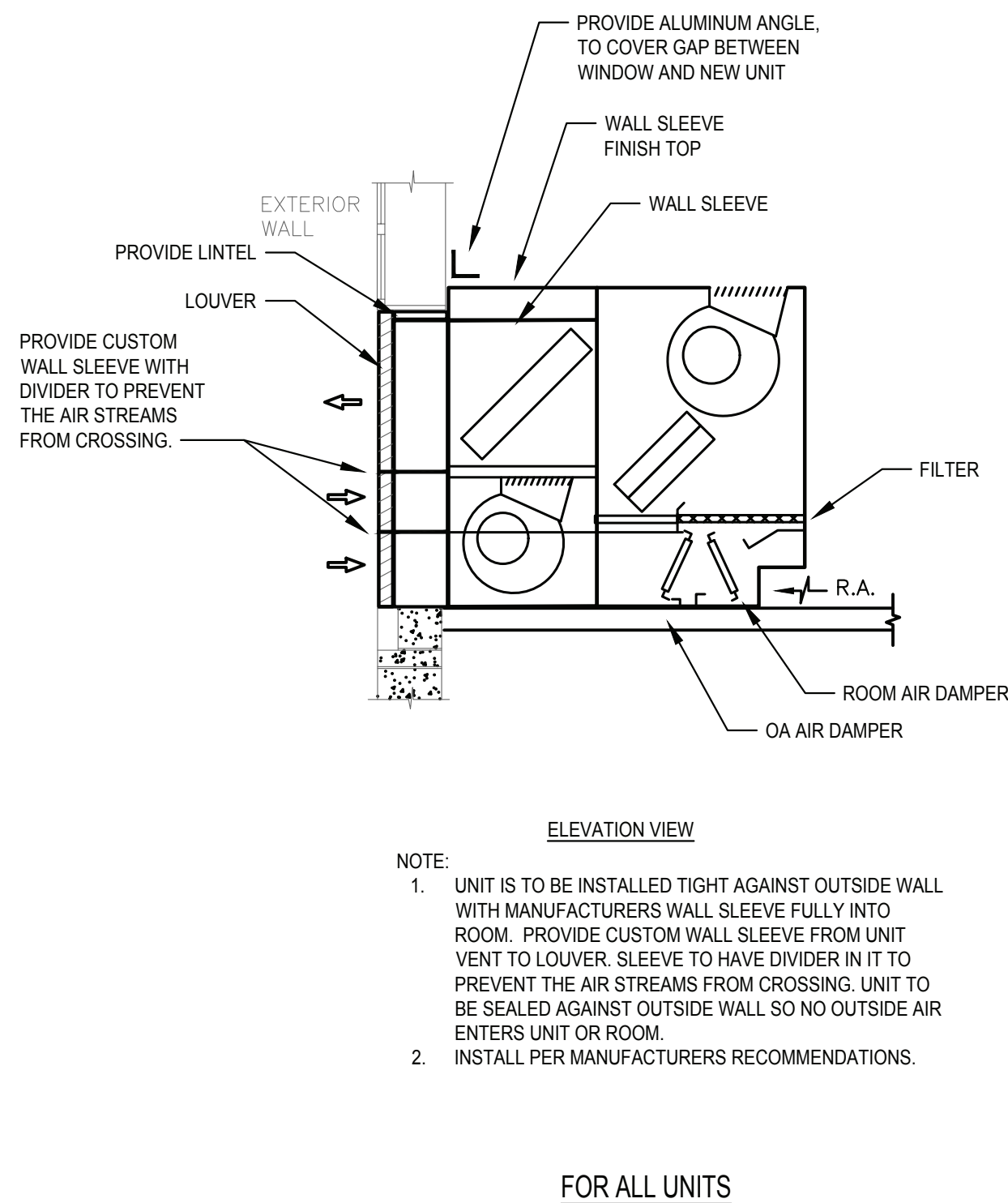
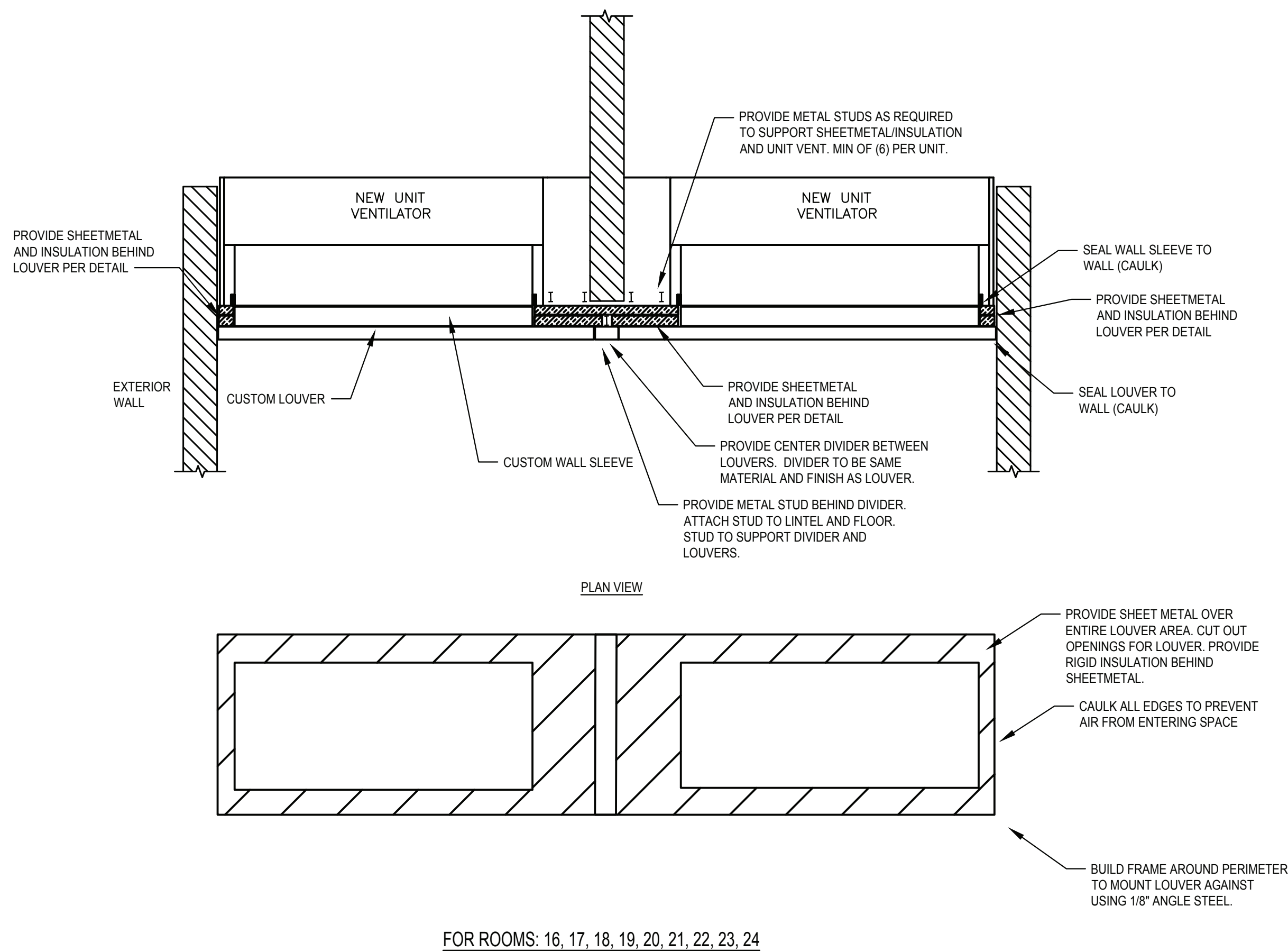
DRAWN BY:
MLB

ISSUE: 03/19/2021



DESCRIPTION
HVAC Details and Diagrams

W-M.601.00



1 UNIT VENTILATOR DETAIL

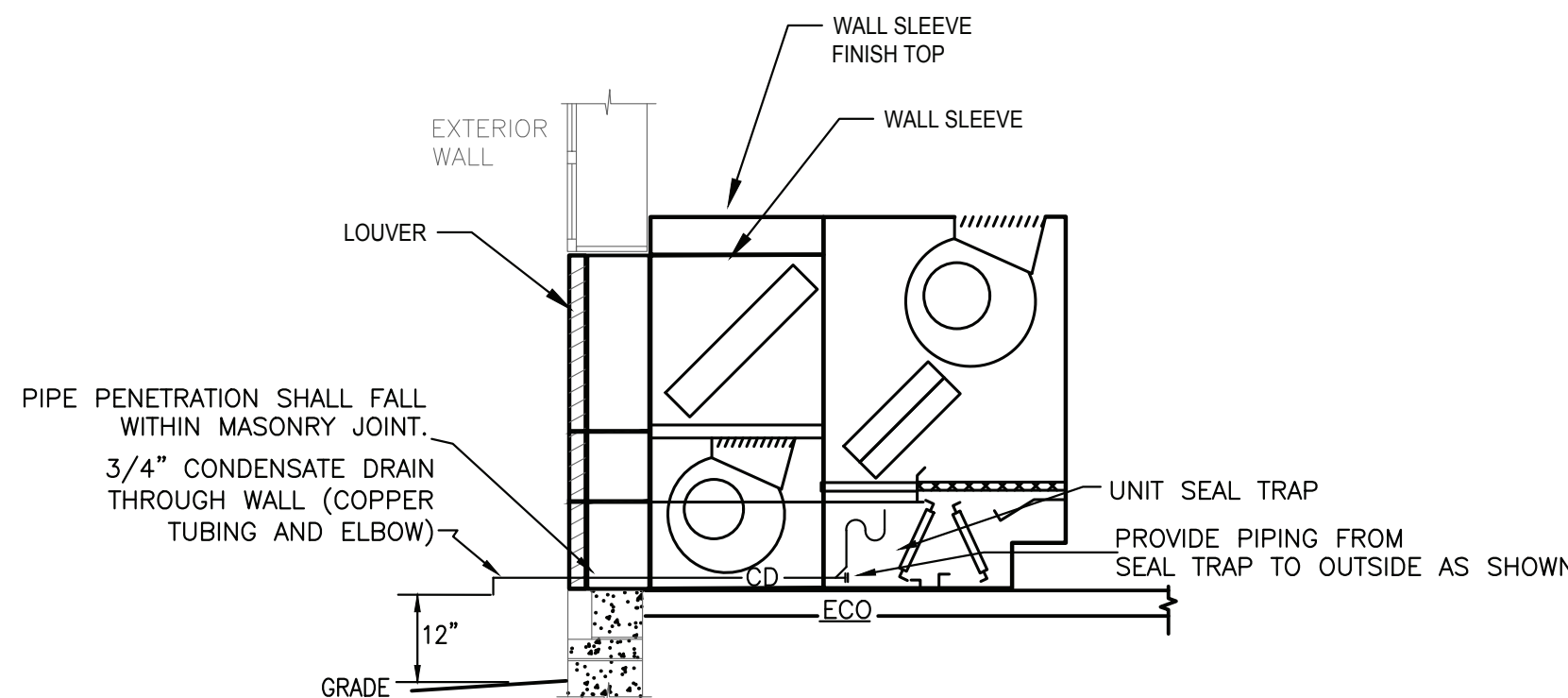
SCALE : NONE

GENERAL UNIT VENTILATOR INSTALLATION NOTES

- IT IS THE RESPONSIBILITY OF THIS CONTRACTOR TO INSURE THAT ALL AREAS OF THE UNIT VENTILATOR ARE COMPLETELY SEALED AND INSULATED TO THE OUTSIDE AIR INTAKE.
- AS WALL CONDITIONS VARY AT EACH INDIVIDUAL UNIT THIS CONTRACTOR MUST PROVIDE SAFING, INSULATION, SHEET METAL, AND ACCESSORIES REQUIRED TO SEAT UNIT VENTILATOR FIRMLY AGAINST THE WALL.
- REFER TO PIPING DETAIL FOR WATER SPECIALTIES.
- THE END COMPARTMENTS OF EACH UNIT VENTILATOR MUST BE COMPLETELY SEALED-OFF AND RE-INSULATED TO PREVENT ANY OUTSIDE AIR FROM ENTERING THE UNIT OR THE ROOM.
- THE CONTRACTOR IS RESPONSIBLE TO VERIFY AND ORDER THE CORRECT SIZE LOUVER
- THIS CONTRACTOR IS RESPONSIBLE TO ENSURE THAT NO WATER ENTERS BUILDING AROUND NEW LOUVER. CAULK AS REQUIRED. IF JOINT IS LARGER THAN 1/4" CONTRACTOR SHALL PROVIDE A METAL BACKING MATERIAL BETWEEN LOUVER AND WALL AND THEN CAULK WEATHERTIGHT.
- INSTALL PER MANUFACTURERS INSTRUCTIONS.

NOTE:

- THE MC SHALL REMOVE AT LEAST (3) OF THE EXISTING LOUVERS, MEASURE THE WALL TO VERIFY THE WIDTH, HEIGHT AND DEPTH AND RE-INSTALL THE LOUVER AT THE START OF THE PROJECT BEFORE ANY SUBMITTALS HAVE BEEN SENT TO VERIFY WALL CONSTRUCTION AND WALL SLEEVE DEPTH. CONTRACTOR TO VERIFY ALL LOUVERS IN FIELD PRIOR TO SUBMITTALS.
- THE CONTRACTOR SHALL INSTALL ONE UNIT AND HAVE THE OWNER AND ENGINEER REVIEW THE INSTALLATION BEFORE THE OTHER UNITS ARE INSTALLED.



2 UV CONDENSATE DRAINAGE PIPING DIAGRAM

SCALE : NONE

NOTES:

- PROVIDE CONDENSATE DRAIN THROUGH EXTERIOR WALL, EXPOSED DRAIN PIPE SHALL BE COPPER.
- PENETRATIONS THROUGH WALL SHALL BE CORE DRILLED AND SEALED WATER & AIR TIGHT.
- EXTREME CARE SHALL BE TAKEN WHILE LOCATING PENETRATION. COORDINATE WORK GENERAL CONTRACTOR FOR ALIGNMENT WITH MORTAR LINES.
- REVIEW EXISTING WALL MORTAR CONDITIONS WITH GC PRIOR TO START OF WORK THROUGHOUT RENOVATED AREAS.

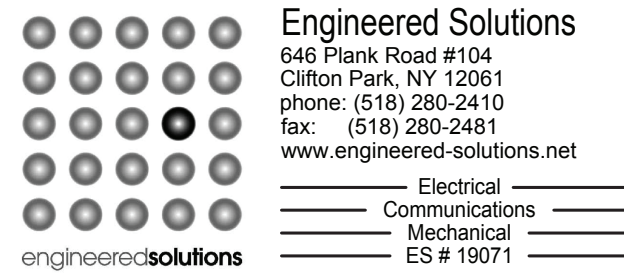


Architect:
Hamlin Design Group
 915 Broadway, Suite 101A
 Albany, New York 12207
 Tel: 518.724.5159
 Fax: 518.320.8633
 Web: hamlindesigngroup.com

Hazardous Material Consultant:



MEP Engineer:



Client:



Peekskill City School District
 1031 Elm St.
 Peekskill, NY 10566

Peekskill Reconstruction

SED Project: 66-15-00-01-0-005-020
 HDG Project: 201

Oakside Elementary

200 Decatur Ave.,
 Peekskill, NY 10566

SED Project: 66-15-00-01-0-008-017
 HDG Project: 203

Woodside Elementary

612 Depew St.,
 Peekskill, NY 10566

DRAWN BY:
 MLB

ISSUE: 03/19/2021



DESCRIPTION
 HVAC Details and Diagrams

W-M.602.00