

GENERAL NOTES	
1.	DRAWINGS ARE DIAGRAMMATIC AND INDICATE THE GENERAL ARRANGEMENT OF SYSTEMS AND WORK. CONTRACTOR SHALL FURNISH ALL NECESSARY OUTLETS, SUPPORTS, FITTINGS AND ACCESSORIES TO FULFILL APPLICABLE CODES, REGULATIONS, BUILDING STANDARDS AND THE BEST PRACTICES OF THE TRADE FOR FIRST CLASS ELECTRICAL INSTALLATION.
2.	THE DRAWINGS INDICATE SIZE AND GENERAL LOCATION OF WORK. SCALED DIMENSIONS SHALL NOT BE USED. THE EXACT LOCATION AND ELEVATION OF ALL ELECTRICAL EQUIPMENT SHALL BE COORDINATED IN FIELD WITH RESPECTIVE CONTRACTOR/OWNER.
3.	WHERE PANELBOARDS, SWITCHES, CIRCUIT BREAKERS, ETC. ARE EXISTING AND TO BE REUSED THE CONTRACTOR SHALL CLEAN AND REFURBISH THE EQUIPMENT. THIS SHALL INCLUDE TIGHTENING ALL CONNECTIONS, REPLACING DEFECTIVE MECHANISMS AND PROVIDING ALL REQUIRED AND NECESSARY MISCELLANEOUS COMPONENTS SO THAT THE EQUIPMENT SHALL BE IN PERFECT WORKING ORDER.
4.	THE CONTRACTOR SHALL COORDINATE WITH THE OWNER PRIOR TO SUBMISSION OF BID TO DETERMINE WHAT WORK MUST BE PERFORMED AFTER NORMAL BUSINESS HOURS. UNLESS OTHERWISE DIRECTED ANY NOISY WORK (CHOPPING, CORE DRILLING, HAMMERING, ETC.) AND BUILDING POWER INTERRUPTIONS SHALL BE PERFORMED OUTSIDE OF NORMAL BUSINESS HOURS. CONFIRM NORMAL BUSINESS HOURS WITH BUILDING OWNER. NO ADDITIONAL COST WILL BE CHARGED TO OWNER FOR WORK PERFORMED OUTSIDE NORMAL BUSINESS HOURS.
5.	ALL WORK WHERE SHOWN WITH DARK/SOLID LINES ON THE DRAWINGS IS NEW UNLESS OTHERWISE NOTED. WHERE SHOWN WITH DASHED LINES WITH LETTER (E) IS EXISTING TO REMAIN, WITH LETTER (R) IS EXISTING TO BE REMOVED, WITH LETTER (ER) IS EXISTING RELOCATED, WITH LETTER (RN) IS EXISTING TO BE REPLACED WITH NEW AND WITH LETTER (RR) IS EXISTING TO BE REMOVED AND RELOCATED.
6.	CIRCUIT NUMBERS TO EXISTING PANELS ARE SHOWN FOR INTENT ONLY. ACTUAL CIRCUIT NUMBERS TO BE USED SHALL BE DETERMINED BY THE FIELD CONDITIONS BY UTILIZING SPARE CIRCUITS, BREAKERS OR SPACES IN EXISTING PANEL. SIZE AS INDICATED ON THE PLANS. THE ELECTRICAL CONTRACTOR SHALL BALANCE LOAD OF CIRCUITS EVENLY ON ALL PHASES.
7.	FEEDERS AND BRANCH CIRCUITRY SHALL BE RUN IN MINIMUM 3/4" CONDUIT UNLESS OTHERWISE NOTED. FINAL CONNECTIONS TO MOTORS MAY BE MADE WITH FLEXIBLE METALLIC CONDUIT (NO LONGER THAN 18"). IN UNFINISHED AREAS CONDUIT SHALL BE RUN EXPOSED AND IN FINISHED AREAS CONDUIT SHALL BE RUN CONCEALED.
8.	PROVIDE PANEL NAME PLATE MADE OF BLACK LAMINATED PLASTIC WITH WHITE ENGRAVED LETTERING AND TYPE WRITTEN DIRECTORY FOR ALL NEW AND EXISTING PANELS BEING USED FOR THIS PROJECT.
9.	ALL CONDUCTORS SHALL BE COPPER, TYPE THHN/THWN INSULATED. ALL CONDUCTORS SHALL HAVE 600 VOLT RATED INSULATION UNLESS OTHERWISE NOTED.
10.	PROVIDE LOCK-ON CIRCUIT BREAKERS FOR CIRCUITS SERVING EXIT SIGN FIXTURES AND EMERGENCY BATTERY PACK FIXTURES.
11.	REFER TO ARCHITECT'S REFLECTED CEILING PLAN FOR EXACT LOCATION OF ALL CEILING MOUNTED LIGHTING FIXTURES AND OTHER CEILING INSTALLED ITEMS.
12.	THE USE OF FLEXIBLE CONDUIT FROM LIGHTING FIXTURES TO JUNCTION BOX IS PERMITTED ONLY WHEN A SEPARATE GROUND WIRE IS INSTALLED WITH THE CONDUCTORS INSIDE FLEXIBLE CONDUIT. THE GROUND WIRE MUST BOND THE FIXTURE HOUSING TO THE JUNCTION BOX. MAXIMUM LENGTH 6'-0".
13.	EXACT LOCATION AND MOUNTING HEIGHTS OF ALL DEVICES SHALL BE COORDINATED WITH THE ARCHITECT PRIOR TO THE INSTALLATION.
14.	WALL MOUNTED EQUIPMENT (SWITCHES, RECEPTACLES, ETC.) SHALL BE SURFACE MOUNTED IN UNFINISHED AREAS AND ON EXISTING CONCRETE BLOCK WALLS AND FLUSH MOUNTED IN NEW WALLS/PARTITIONS.
15.	CONDUIT RUNS SHALL BE PARALLEL WITH OR AT RIGHT ANGLES TO WALLS AND CEILINGS. CONDUIT SHALL BE SUPPORTED BY APPROVED MEANS. SUPPORTS FOR HORIZONTAL RUNS OF CONDUIT SHALL NOT EXCEED SEVEN FEET ON CENTERS.
16.	PROVIDE PULL BOXES, JUNCTION BOXES, CONDUIT ELBOWS AND OFFSETS TO SUIT FIELD CONDITIONS AND THE NATIONAL ELECTRICAL CODE.
17.	CONTRACTOR SHALL COORDINATE WITH THE FIRE DEPARTMENT AND F.A. VENDOR BEFORE PROCEEDING WITH WORK INVOLVING FIRE ALARM SYSTEM.
18.	ALL EMPTY CONDUIT SHALL BE PROVIDED WITH A DRAGWIRE.
19.	THE MINIMUM WIRE SIZE FOR 120 VOLT BRANCH CIRCUITS SHALL BE NO. 12 AWG, EXCEPT OVER 100' IN LENGTH SHALL BE NO. 10 AWG.
20.	PROVIDE ALL REQUIRED AND NECESSARY ACCESSORIES (EX. CONNECTORS, ADAPTERS, BUSHINGS, CLAMPS, ETC.) TO FACILITATE COMPLETE INSTALLATION.
21.	THE ELECTRICAL CONTRACTOR SHALL CONFIRM THE CONFIGURATION TYPE FOR ALL SPECIAL RECEPTACLES FOR COPIERS, DATA PROCESSING EQUIPMENT, ETC. WITH OWNER AND ENGINEER PRIOR TO ORDERING.
22.	COORDINATE LOCATION OF ALL MECHANICAL EQUIPMENT WITH HVAC CONTRACTOR IN FIELD. FUSES FOR ALL MOTOR LOADS SHALL BE DUAL ELEMENT TIME DELAY TYPE.
23.	ALL RECEPTACLES SPECIFIED FOR PERSONAL COMPUTERS, LASER PRINTERS AND SIMILAR TYPES OF EQUIPMENT SHALL BE ISOLATED GROUND TYPE, ORANGE IN COLOR AND PROVIDED WITH A SEPARATE NEUTRAL AND GROUND CONDUCTOR. THIS IS TO COMPENSATE FOR HARMONIC CURRENTS. SHARED NEUTRAL CONDUCTORS FOR THESE HOMERUNS ARE NOT PERMITTED.
24.	ALL JUNCTION OR OUTLET BOXES SHALL BE INSTALLED SO AS TO ALLOW ACCESS TO COVER. PROVIDE ARCHITECT APPROVED ACCESS DOORS OR PLATES AS REQUIRED IN AREAS WHERE UNOBSTRUCTED ACCESS TO BOX OR OUTLET IS NOT POSSIBLE.
25.	PRIOR TO ORDERING LIGHTING FIXTURES, COORDINATE WITH ARCHITECTURAL DRAWINGS AND SPECIFICATIONS. IF DISCREPANCIES EXIST BETWEEN ARCHITECTURAL AND ENGINEERING INFORMATION OBTAIN CLARIFICATION PRIOR TO PROCEEDING.
26.	MULTIPLE SWITCHES SHOWN IN SAME LOCATION SHALL BE GANGED TOGETHER WITH A COMMON FACEPLATE.
27.	ALL LIGHTING FIXTURES CONTROLLED BY DIMMER SWITCHES SHALL BE PROVIDED WITH A DEDICATED NEUTRAL CONDUCTOR.
28.	ALL EMERGENCY LIGHT FIXTURES DESIGNATED 'EM' SHALL BE SWITCHED. ALL EMERGENCY AND EMERGENCY LIGHT FIXTURES SHALL REVERT TO BATTERY OPERATION UPON INTERRUPTION OF NORMAL POWER AND ILLUMINATE REGARDLESS OF LIGHT SWITCH POSITION.
29.	WIRING FOR P.A. SYSTEMS SHALL BE IN ACCORDANCE WITH APPROVED MANUFACTURER'S REQUIREMENTS, WIRING INDICATED ON DRAWINGS IS FOR REFERENCE ONLY. WIRING FOR P.A. SYSTEM AND CLOCKS SHALL BE PLENUM RATED AND RUN EXPOSED ABOVE ACCESSIBLE CEILINGS. IT SHALL BE RUN IN EMT CONDUIT WHERE EXPOSED, EXCEPT FOR CORRIDORS, CLASSROOMS AND OFFICES IT SHALL BE RUN IN STEEL SURFACE RACEWAY (SIMILAR TO WIREMOLD V-500 AND/OR V-700).
30.	PRIOR TO ANY CHASING, CHOPPING OR CORE DRILLING BEING PERFORMED, THE CONTRACTOR SHALL FIELD INVESTIGATE CONDITIONS AND COORDINATE ALL WORK TO ENSURE THAT IT WILL BE IN HARMONY AND NOT AFFECT ANY EXISTING BUILDING SYSTEMS. THIS WORK MUST BE APPROVED BY BUILDING OWNER PRIOR TO PROCEEDING.
31.	OPENINGS AROUND ELECTRICAL PENETRATIONS THROUGH FIRE RESISTANCE RATED WALLS, PARTITIONS, FLOORS OR CEILINGS SHALL BE FIRE STOPPED USING APPROVED METHODS. ALL SLEEVES MUST HAVE BUSHINGS. SEALANT SHALL BE 3 HOUR FIRE BARRIER #CP-25 (NO LESS THAN 3" THICK BACKED UP WITH MINERAL WOOL).
32.	ALL PANELBOARD COVERS SHALL BE INSTALLED IN PLACE AT THE COMPLETION OF EACH DAYS WORK.
33.	PREPARE 'AS-BUILT' DRAWINGS THAT REFLECT ACTUAL CONSTRUCTION AND SHOW DEVIATIONS FROM DESIGN DRAWINGS.
34.	LIGHT FIXTURES SHALL BE CONSTRUCTED TO SUIT PARTICULAR TYPE OF CEILING AND WALL CONSTRUCTION AND SHALL BE PROVIDED WITH APPROPRIATE TRIMS, MOUNTING FRAMES AND ADAPTERS AS REQUIRED.
35.	ALL NEW CIRCUIT BREAKERS INSTALLED INTO EXISTING PANELBOARDS SHALL BE UL LISTED FOR USE IN THE PANEL.

BEFORE FABRICATION THIS CONTRACTOR SHALL VERIFY ALL MEASUREMENTS AND CONDITIONS ON JOB AND COORDINATE HIS WORK WITH THE WORK OF ALL OTHER CONTRACTORS

GENERAL REMOVAL NOTES	
1.	BEFORE COMMENCING WORK, EXAMINE ALL ADJOINING AREAS THAT MAY BE AFFECTED BY REMOVAL. REPORT TO THE GENERAL CONTRACTOR ANY CONDITION THAT PREVENTS PERFORMANCE OF THE WORK.
2.	BECOME THOROUGHLY FAMILIAR WITH EXISTING CONDITIONS WHERE CONNECTIONS MUST BE MADE, CHANGED OR ALTERED. THE INTENT OF THE WORK IS SHOWN ON THE DRAWINGS AND DESCRIBED HEREINAFTER AND NO CONSIDERATION WILL BE GRANTED BY REASON OF LACK OF FAMILIARITY ON THE PART OF THE CONTRACTOR WITH ACTUAL PHYSICAL CONDITIONS AT THE SITE. INSPECT EACH AND EVERY AREA AFFECTED BY THE ALTERATION OF THE SPACE BEFORE SUBMITTAL OF BID.
3.	ALL ELECTRICAL EQUIPMENT IN THE AREA OF WORK IS EXISTING TO BE REMOVED UNLESS OTHERWISE NOTED. THIS SHALL INCLUDE BUT NOT BE LIMITED TO THE FOLLOWING: A. DISTRIBUTION BOARDS AND PANELBOARDS. B. LIGHTING FIXTURES AND SWITCHES. C. CIRCUIT BREAKERS AND DISCONNECT SWITCHES. D. RECEPTACLES, OUTLETS AND DEVICES.
4.	ALL CONDUCTORS AND CONDUIT ASSOCIATED WITH REMOVED ELECTRICAL EQUIPMENT SHALL BE REMOVED COMPLETELY BACK TO ITS SOURCE OF POWER AND DISCONNECTED.
5.	ALL POWER CONDUCTORS, CONTROL WIRING AND CONDUIT ASSOCIATED WITH MECHANICAL EQUIPMENT SUCH AS FANS, AIR CONDITIONING UNITS, PUMPS, ETC. DESIGNATED FOR REMOVAL ON THE HVAC AND PLUMBING REMOVAL DRAWINGS SHALL BE REMOVED CLEAR BACK TO THE SOURCE OF POWER AND DISCONNECTED. ALL MOTOR STARTERS, DISCONNECT SWITCHES, CONTROL DEVICES, ETC. SHALL BE REMOVED. REFER TO MECHANICAL AND PLUMBING DRAWINGS FOR ADDITIONAL INFORMATION.
6.	CIRCUIT BREAKERS AND/OR SWITCHES IN PANELBOARD(S) OR DISTRIBUTION BOARD(S) MADE SPARE DUE TO REMOVAL SHALL BE DESIGNATED AS SUCH ON THE PANEL SCHEDULE.
7.	THE ELECTRICAL CONTRACTOR SHALL BE RESPONSIBLE TO TRACE AND REMOVE ALL EXISTING FEEDERS AND BRANCH CIRCUIT WIRING WHICH PASSES THROUGH THE REMOVAL AREA THAT SERVE EXISTING OCCUPIED SPACES TO REMAIN. COORDINATE WITH BUILDING MANAGER PRIOR TO ANY SHUTDOWNS OR DISRUPTIONS THAT MAY BE REQUIRED TO ACCOMPLISH THIS WORK.
8.	DISPOSE OF ALL REMOVED EQUIPMENT, WHICH IS NOT INTENDED TO BE REUSED, PRIOR TO DISPOSAL. CONTACT BUILDING MANAGER TO DETERMINE IF ANY REMOVED EQUIPMENT IS DESIRED FOR STOCK.
9.	EXISTING CIRCUIT BREAKERS IN PANEL(S) ARE TO BE RE-USED. ELECTRICAL CONTRACTOR TO DISCONNECT PANEL AND CIRCUIT BREAKERS WITH GREAT CARE TO ENSURE AGAINST DAMAGE. THIS CONTRACTOR SHALL PROVIDE NEW CIRCUIT BREAKERS AS REQUIRED. ALL NEW CIRCUIT BREAKERS INSTALLED INTO EXISTING PANELBOARDS SHALL BE UL LISTED FOR USE IN THE PANEL.
10.	ALL FIRE ALARM DEVICES IN THE AREA OF WORK ARE EXISTING TO BE REMOVED UNLESS OTHERWISE NOTED.
11.	EXISTING EQUIPMENT DESIGNATED FOR REUSE SHALL BE CLEANED, REFURBISHED AND RESTORED TO OPTIMUM PERFORMANCE. THIS SHALL INCLUDE BUT NOT LIMITED TO CLEANING OF LIGHT FIXTURES, REPLACEMENT OF IMPERABLE BALLASTS AND LAMPS, RESISTANCE TESTING OF BRANCH CIRCUITS AND FEEDERS, ETC.
12.	EXTEND EXISTING CIRCUITRY TO THOSE DEVICES THAT ARE TO BE RELOCATED. MATCH EXISTING TYPE AND SIZE. RELOCATION OF EXISTING EQUIPMENT SHALL BE PERFORMED ONLY UPON OWNERS ACCEPTANCE OF EXISTING EQUIPMENT.
13.	EXTEND EXISTING CIRCUITS SERVING EQUIPMENT TO REMAIN FROM PANELS THAT ARE TO BE REMOVED TO NEW PANELS OR EXISTING PANELS THAT ARE TO REMAIN.

DISPOSAL OF MERCURY CONTAINING LAMPS	
1.	ALL FLUORESCENT AND HID LAMPS WITHIN REMOVED LIGHT FIXTURES ARE CONSIDERED MERCURY CONTAINING AND SHALL BE TREATED AS HAZARDOUS MATERIAL.
2.	FLUORESCENT AND HID LAMPS SHALL BE REMOVED FROM DEMOLISHED LIGHT FIXTURES AND DISPOSED OF AS PER NEW YORK STATE DEC REGULATIONS AND METHODS
3.	LAMPS MUST BE BAGGED IN NON-LEACHING PLASTIC BAGS AND SEALED TO PREVENT LEAKING.
4.	EACH LAMP OR BAGGED CONTAINER IN WHICH THESE LAMPS ARE CONTAINED MUST BE LABELED OR MARKED CLEARLY WITH ONE OF THE FOLLOWING PHRASES; UNIVERSAL WASTE LAMPS, OR WASTE LAMPS, OR USED LAMPS
5.	THESE MARKED BAGS MUST BE DELIVERED TO THE PROPER NEW YORK STATE D.E.C. AUTHORIZED LANDFILL OR RECYCLE CENTERS.

BID PROJECTS	
PROJECT 1: ALL WORK NOT INCLUDED IN PROJECTS 2 & 4 LISTED BELOW.	
ALTERNATE 1A: GREY BOX COMPLETE RENOVATION.	
ALTERNATE 1B: MUSIC ROOMS RENOVATIONS.	
PROJECT 2: LIBRARY RENOVATION & SUPPORT SERVICES SUITE	
ALTERNATE 2A: TELECOIL HEARING LOOP FOR LIBRARY.	
ALTERNATE 2B: KIVA TIERED SEATING FOR LIBRARY.	
ALTERNATE 2C: ACOUSTIC CEILING BAFFLES FOR LIBRARY.	
PROJECT 3: NOT USED	
PROJECT 4: WINDOW REPLACEMENT & GYM SKYLIGHT REPLACEMENT AND ROOF REPLACEMENT.	

ABBREVIATIONS	
ABBRV.	DESCRIPTION
A	AMP/AMPERE
AC	AIR CONDITIONING UNIT
A.F.F.	ABOVE FINISHED FLOOR
AHU	AIR HANDLING UNIT
AWG	AMERICAN WIRE GAUGE
C	CONDUIT
C.B.	CIRCUIT BREAKER
CH	CABINET HEATER
CKT	CIRCUIT
CU	CONDENSING UNIT
CP	CONDENSATE PUMP
(E)	EXISTING TO REMAIN
E.C.	ELECTRICAL CONTRACTOR
EF	EXHAUST FAN
EM	EMERGENCY
(ER)	EXISTING RELOCATED
EXIST.	EXISTING
FA	FIRE ALARM
F.A.C.P.	FIRE ALARM CONTROL PANEL
G.GRD	GROUND
GFI	GROUND FAULT INTERRUPTER
HWH	HOT WATER HEATER
kcmil	THOUSAND CIRCULAR MILLS
KVA	KILOVOLT AMPERE
KW	KILOWATT
LTG	LIGHTING
MCB	MAIN CIRCUIT BREAKER
MDP	MAIN DISTRIBUTION PANEL
MLO	MAIN LUGS ONLY
MTD	MOUNTED
N	NEUTRAL
NTS	NOT TO SCALE
P.A.	PUBLIC ADDRESS
PNL	PANEL
(R)	REMOVE EXISTING
(RN)	REPLACE EXISTING W/NEW
(RR)	REMOVED, SALVAGED AND RELOCATED
SP	SUBMERSED PUMP
TV	TELEVISION
TYP.	TYPICAL
UH	UNIT HEATER
W	WATT
WP	WEATHERPROOF

LEGEND	
	2'x4' FLUORESCENT CEILING MOUNTED LIGHT FIXTURE, UPPER CASE LETTER DENOTES TYPE, LOWER CASE LETTER DENOTES SWITCH CONTROL, FIXTURE SCHEDULE DENOTES TYPE.
	2'x4' CEILING MOUNTED FLUORESCENT LIGHT FIXTURE FOR EMERGENCY OPERATION. 'EM' INDICATES SWITCHED EMERGENCY FIXTURE, 'EM/NL' UNSWITCHED EMERGENCY/NIGHT FIXTURE (TYP.).
	2'x2' FLUORESCENT CEILING MOUNTED FIXTURE, CAPITAL LETTER INDICATES TYPE, LOWER CASE LETTER INDICATES SWITCH CONTROL, FIXTURE SCHEDULE DENOTES TYPE.
	1'x4' FLUORESCENT CEILING MOUNTED FIXTURE, CAPITAL LETTER INDICATES TYPE, LOWER CASE LETTER INDICATES SWITCH CONTROL, FIXTURE SCHEDULE DENOTES TYPE.
	1'x4' CEILING MOUNTED FLUORESCENT LIGHT FIXTURE FOR EMERGENCY OPERATION WITH INTEGRAL BATTERY BACK-UP, TEST BUTTON AND L.E.D.
	4' FLUORESCENT CEILING MOUNTED COMMERCIAL STRIPLITE. LETTER INDICATES TYPE, FIXTURE SCHEDULE DENOTES TYPE.
	CEILING/WALL MOUNTED INCANDESCENT OR COMPACT FLUORESCENT FIXTURE. LETTER INDICATES TYPE, FIXTURE SCHEDULE DENOTES TYPE.
	CEILING/WALL MOUNTED EXIT LIGHT WITH OUTLET BOX, DIRECTIONAL ARROWS SHADED PORTION INDICATES ILLUMINATED FACE, SCHEDULE DENOTES TYPE.
	WALL MOUNTED EMERGENCY LIGHT FIXTURE WITH INTEGRAL BATTERY BACK-UP.
	FLUSH WALL MOUNTED LIGHTING CONTROL SWITCH CONTROLLING ZONE "g" "h" "k" WHERE USED INDICATES KEY SWITCH. '3' INDICATES 3-WAY SWITCH; '4' INDICATES 4-WAY SWITCH.
	FLUSH WALL MOUNTED 3-WAY LIGHTING CONTROL SWITCH.
	FLUSH WALL MOUNTED 4-WAY LIGHTING CONTROL SWITCH.
	FLUSH WALL MOUNTED PIR VACANCY SENSOR LIGHTING CONTROL SWITCH, SIMILAR TO WATTSTOPPER CS-50. (MANUAL ON, AUTO OFF)
	EMERGENCY LIGHTING UL924 RELAY, PROVIDE WATTSTOPPER ELCU-200 MODULE FOR EMERGENCY LIGHT FUNCTION FOR INTERIOR LIGHTING AND WHEN INDICATED WITH 'LVS' PROVIDE MODEL #EPC-B FOR EXTERIOR LIGHTING FIXTURES.
	CEILING/WALL MOUNTED JUNCTION BOX.
	FLUSH FLOOR MOUNTED JUNCTION BOX
	HOMERUN TO DESIGNATED PANEL, ARROWHEAD INDICATES SINGLE POLE CIRCUIT. HOMERUN SHALL CONSIST OF 2#12-3/4" U.O.N.
	HOMERUN TO DESIGNATED PANEL, NUMBERS IN PARENTHESIS INDICATE MULTIPLE CIRCUIT, I.E. 3-HOTS AND 1-GROUND U.O.N.
	EXISTING TO REMAIN
	EXISTING TO BE REMOVED
	NEW
	125V-2P-3W-20A GROUNDED TYPE, SPECIFICATION GRADE WALL MOUNTED TAMPER RESISTANCE DUPLEX RECEPTACLE SIMILAR TO HUBBELL #5362WTR.
	SAME AS ABOVE EXCEPT DOUBLE DUPLEX RECEPTACLE.
	30AMP-2P TWIST LOCK OUTLET
	20A FLUSH WALL MOUNTED GROUND FAULT INTERRUPTING TYPE DUPLEX RECEPTACLE HUBBELL #GFS362.
	QUAD RECEPTACLE SHOWN FOR COORDINATION PURPOSES ONLY. RECEPTACLE PROVIDED BY FURNITURE VENDOR. EC TO PROVIDE POWER TO THE ELECTRIFIED JUNCTION BOX AND MAKE CONNECTIONS TO THE RECEPTACLES.
	125V-2P-3W-20A GROUNDED TYPE, SPECIFICATION GRADE WALL MOUNTED TAMPER RESISTANCE COMBINATION DUPLEX RECEPTACLE AND USB OUTLET.
	FLOOR MOUNTED LEGRAND EVOLUTION 8" SERIES POKE THRU DEVICE FLOOR MOUNTED COMBINATION POWER/DATA. FOUR 125V-1P-2W-20A QUAD RECEPTACLE AND THEN (1) DATA PORTS. PROVIDE BRUSHED ALUMINUM FINISH. LEGRAND MODEL #16ATCPAA.
	CEILING MOUNTED LOW VOLTAGE, DUAL TECHNOLOGY SENSOR, SIMILAR TO WATTSTOPPER MODEL# DT-300, MANUAL ON, AUTO OFF, WORK WITH LOCAL LOW VOLTAGE MOMENTARY CONTACT WALL SWITCH (LVSW-101). INCLUDE REQUIRED POWER PACKS. PROGRAM TO MAXIMUM SENSITIVITY AND TIME DELAY TO 20 MIN.
	CEILING MOUNTED LOW VOLTAGE ULTRASONIC SENSOR, SIMILAR TO WATTSTOPPER MODEL# WT-2255, WITH LONG CORRIDOR COVERAGE PATTERN, INCLUDE POWER PACKS AS REQUIRED. MANUAL ON, AUTO OFF, WORK WITH LOCAL 'KEY' SWITCHES.
	NETWORK DIGITAL DIMMABLE ROOM CONTROLLER FOR LIGHTING CONTROL. SIMILAR TO WATTSTOPPER MODEL LMRc-213, HOT WIRE TO LOAD, CAT 5 WIRE CONNECTIONS TO CONTROL DEVICES. RC#\"/>
	NETWORK DIGITAL CEILING MOUNTED DUAL TECHNOLOGY OCCUPANCY SENSOR, SIMILAR TO WATTSTOPPER MODEL LMSW-102, WORKS WITH DIGITAL ROOM CONTROLLER. PROGRAM TO MAXIMUM SENSITIVITY AND TIME DELAY TO 20 MIN.
	NETWORK DIGITAL CEILING MOUNTED CLOSED LOOP, SINGLE ZONE PHOTO SENSOR. SIMILAR TO WATT STOPPER MODEL LMLs-400, WORKS WITH ROOM CONTROLLER.
	NETWORK DIGITAL FLUSH MOUNTED PRESET WALL STATIONS, SIMILAR TO WATTSTOPPER MODEL LMSW-102, WORKS WITH DIGITAL ROOM CONTROLLER. INCLUDES BUTTON ENGRAVING, 'WS#\"/>
	NETWORK DIGITAL FLUSH MOUNTED PRESET SINGLE ZONE DIMMABLE WALL STATION, SIMILAR TO WATTSTOPPER MODEL LMSW-104, WORKS WITH DIGITAL ROOM CONTROLLER. INCLUDES BUTTON ENGRAVING AND PROGRAMMING PER ZONES: ON, RAISE, LOWER, OFF. SUPERSCRIPT '3' DENOTES 3 WAY SWITCH.
	NETWORK DIGITAL FLUSH MOUNTED PRESET TWO ZONE DIMMABLE WALL STATION, SIMILAR TO WATTSTOPPER MODEL LMSW-104, WORKS WITH DIGITAL ROOM CONTROLLER. INCLUDES BUTTON ENGRAVING AND PROGRAMMING PER ZONES: A, B, RAISE, LOWER. SUPERSCRIPT '3' DENOTES 3 WAY SWITCH.
	NETWORK DIGITAL FLUSH MOUNTED PRESET THREE ZONE DIMMABLE WALL STATION, SIMILAR TO WATTSTOPPER MODEL LMSW-105, WORKS WITH DIGITAL ROOM CONTROLLER. INCLUDES BUTTON ENGRAVING AND PROGRAMMING PER ZONES: ON/RAISE, OFF/LOWER, A, B, C, PRES. SUPERSCRIPT '3' DENOTES 3 WAY SWITCH.
	WALL RECESS MOUNTED LOW VOLTAGE DUAL TECHNOLOGY VACANCY SENSOR, SIMILAR TO WATTSTOPPER MODEL# DSW-301. MANUAL ON, AUTO OFF. PROGRAM TO MAXIMUM SENSITIVITY AND TIME DELAY TO 15 MIN.
	FLUSH WALL MOUNTED LOW VOLTAGE MOMENTARY CONTACT SWITCH, SIMILAR TO WATTSTOPPER LVSW-101. WORK WITH CEILING SENSORS (DT-300) FOR MANUAL ON, AUTO OFF OPERATION. '3' INDICATES CONTROL ZONE; '3' INDICATES 3-WAY SWITCH; '4' INDICATES 4-WAY SWITCH.
	FLUSH WALL MOUNTED LOW VOLTAGE DIMMER SWITCH, SIMILAR TO WATTSTOPPER LDMW WORK WITH CEILING SENSORS (DT-300) FOR MANUAL ON, AUTO OFF OPERATION. 'g' INDICATES CONTROL ZONE; '3' INDICATES 3-WAY SWITCH; '4' INDICATES 4-WAY SWITCH.
	WEATHERPROOF, EXTERIOR GRADE WALL MOUNTED OCCUPANCY SENSORS.
	VARIABLE FREQUENCY DRIVE, FURNISHED BY MECHANICAL CONTRACTOR, WIRED AND INSTALLED BY ELECTRICAL CONTRACTOR. THE CONDUIT AND WIRING FROM VFD TO MECHANICAL UNIT INTER CONNECTION SHALL MATCH THE SAME SIZE AND CONDUIT AND WIRE FROM VFD TO DESIGNATED PANELBOARD. REFER TO PANEL SCHEDULE OR NOTES FOR CONDUIT WIRE AND SIZE.
	EMERGENCY POWER OFF KEY SWITCH/PUSH BUTTON

LEGEND	
	FLUSH WALL MOUNTED DATA OUTLET CONSISTING OF A COVER PLATE WITH 1" GROMMETED OPENING AND 1" EMPTY CONDUIT WITH DRAG LINE STUBBED UP 6" ABOVE FINISHED CEILING.
	FLUSH WALL MOUNTED TELEPHONE OUTLET CONSISTING OF A COVER PLATE WITH 1" GROMMETED OPENING AND 1" EMPTY CONDUIT WITH DRAG LINE STUBBED UP 6" ABOVE CEILING.
	SURFACE MOUNTED NEW ELECTRICAL PANELBOARD.
	SURFACE MOUNTED EXISTING ELECTRICAL PANELBOARD.
	HEAVY DUTY TYPE DISCONNECT SWITCH WITH FINAL FLEXIBLE EQUIPMENT CONNECTION. 240 INDICATES VOLTAGE, 3 INDICATES NO. OF POLES, 60 INDICATES AMPERE RATING, NF INDICATES NON-FUSED(OR FUSE SIZE) U.O.N. REFER TO SPECIFICATION AND DRAWINGS FOR ENCLOSURE. 'WP' WHERE USED INDICATES WEATHERPROOF ENCLOSURE (NEMA 3R).
	THERMAL SWITCH, CUTLER-HAMMER MS SERIES MANUAL STARTERS SINGLE-PHASE 20AMP, 120V U.O.N. WHERE INDICATED WITH 'WP' PROVIDE WATERTIGHT ENCLOSURE TYPE 3.
	208 VOLT, SINGLE PHASE 2 POLE, THERMAL OVERLOAD PROTECTED TOGGLE TYPE SWITCH. SIMILAR TO EATON #AH4361 & #AH27940C NEMA 1 ENCLOSURE.
	MOTOR (F.B.O. WIRED BY ELEC.) NUMBER INDICATES HORSEPOWER. REFER TO PANEL SCHEDULES FOR WIRING AND OVER CURRENT PROTECTION.
	WALL MOUNTED COMBINATION FIRE ALARM HORN/STROBE DEVICE.
	WALL MOUNTED FIRE ALARM MANUAL PULL STATION
	CEILING MOUNTED IONIZATION TYPE SMOKE DETECTOR
	CEILING OR WALL MOUNTED CARBON MONOXIDE DETECTOR SOUNDER BASE
	CEILING OR WALL MOUNTED GAS LEAK DETECTOR
	DUCT MOUNTED PHOTOELECTRIC TYPE SMOKE DETECTOR WITH (REMOTE) CONTROL RELAY MODULE FOR FAN SHUT DOWN. RELAY MODULE TO BE MOUNTED ADJACENT TO MECHANICAL EQUIPMENT. ALSO PROVIDE LOAD RELAY AS REQUIRED IF EXISTING DISCONNECT/STARTERS DO NOT HAVE A SET OF DRY CONTACTS TO TIE-IN FOR FAN SHUTDOWN.
	CEILING MOUNTED HEAT DETECTOR
	WALL MOUNTED FIRE ALARM STROBE LIGHT.
	FIRE ALARM CONTROL PANEL.
	FIRE ALARM ALPHANUMERIC ANNUNCIATOR PANEL.
	INTERFACE MODULE CONSISTING OF CONTROL RELAY AND MONITOR MODULES. IN NEMA 1 ENCLOSURE. ALSO PROVIDE LOAD RELAY AS REQUIRED IF EXISTING DISCONNECT/STARTERS DO NOT HAVE A SET OF DRY CONTACTS TO TIE-IN FOR FAN SHUTDOWN.
	LEHIGH SOLITAIRE STM MASTER LIGHTING CONTROL PANEL.
	SOLITAIRE DIMMING SYSTEM MODEL #SDE-LCP AUXILIARY LCD LIGHTING CONTROL PANEL.
	SOLITAIRE IMPRESS ANALOG OCCUPANCY SENSOR
	SOLITAIRE IMPRESS MULTI I/O CONTROLLER
	WIRELESS ACCESS POINT. INSTALLED BY OWNER
	GENERATOR ANNUNCIATOR
	CARD READER.
	CLOSED CIRCUIT TELEVISION CAMERA (CCTV). REMOVED STORED BY EC. INSTALLED BY OWNER.
	HAND SET RECEIVER FOR CALL-IN FUNCTION.
	VOICE ATTENUATOR
	SURFACE MOUNTED P.A. SPEAKER MATCH EXISTING.
	CEILING MOUNTED P.A. SPEAKER MATCH EXISTING U.O.N.
	WALL MOUNTED COMBINATION CLOCK AND SPEAKER. 'S' WHERE USED INDICATES SURFACE MOUNTED AND 'F' WHERE USED INDICATES FLUSH MOUNTED.
	ONE (1) GANG BOX MOUNTED AT 18" A.F.F. UNLESS OTHERWISE NOTED. FURNISHED AND INSTALLED BY THE ELECTRICAL CONTRACTOR. CONDUIT SHALL BE STUBBED UP 6" BELOW THE TOP OF THE BAR JOIST. CONFIRM LOCATION AND MOUNTING HEIGHT WITH AV CONSULTANT BEFORE THE START OF ANY WORK.
	TWO (2) GANG BOX MOUNTED AT 48" A.F.F. UNLESS OTHERWISE NOTED. FURNISHED AND INSTALLED BY THE ELECTRICAL CONTRACTOR. CONDUIT SHALL BE STUBBED UP 6" BELOW THE TOP OF THE BAR JOIST. CONFIRM LOCATION AND MOUNTING HEIGHT WITH AV CONSULTANT BEFORE THE START OF ANY WORK.
	FLOOR BOX TYPE: INTEGRATED FLOOR OUTLET AND AV INPUTS; FOUR (4) POWER OUTLETS. BASIS OF DESIGN: FSR FL500P-4-B. BOX SHALL BE FURNISHED AND PROVIDED BY ELECTRICAL CONTRACTOR. CONFIRM LOCATION WITH AV CONSULTANT BEFORE THE START OF ANY WORK.
	SWITCH TO CONTROL PROJECTOR SCREEN AND FIRE SHUTTER. CONFIRM LOCATION AND MOUNTING HEIGHT WITH AV CONSULTANT AND OWNER RESPECTIVELY BEFORE THE START OF ANY WORK.
	FLAT PANEL INTEGRATION SYSTEM, MANUFACTURER: RP VISUAL SOLUTIONS, MODEL #WALLMATE 32. PROVIDE (2) DUPLEX RECEPTACLES IN BOX. PROVIDE (1) HDMI CONNECTOR IN BOX. REFER TO AV DRAWINGS FOR MORE DETAILS. PROVIDE 1-1/4" CONDUIT STUB UP TO CEILING.
	FLUSH MOUNTED STANDARD DEVICE BOX WITH SCREW COVER. SINGLE GANG BOX 3-5/8" DEEP. MOUNTED AT 48" AFF. REFER TO AV DRAWINGS FOR MORE DETAILS. PROVIDE 1-1/4" CONDUIT STUB UP TO CEILING.
	JUNCTION BOX FOR ELECTRIFIED FURNITURE. COORDINATE WITH ARCHITECT BEFORE THE START OF ANY WORK.
	CONNECTOR AND CONDUIT PATHWAY FOR TV
	CEILING MOUNTED QUAD RECEPTACLE FOR PROJECTOR
	CEILING MOUNTED QUAD RECEPTACLE AND DATA FOR AUDIO VISUAL RACK
	EXISTING PROJECTOR
	SURFACE MOUNTED WIREMOLD V700 FOR EITHER RECEPTACLE OR COMMUNICATION WIRING. REFER TO DRAWINGS FOR ADDITIONAL INFORMATION.
	SURFACE MOUNTED WIREMOLD SERIES 4000 CONTAINING RECEPTACLE CIRCUITS AND COMMUNICATION WIRING. REFER TO DRAWINGS FOR ADDITIONAL INFORMATION.
	TAG SYMBOL. NUMERAL DENOTES REFERENCE TO A WORK NOTE.
MECHANICAL EQUIPMENT IDENTIFICATION:	
	EQUIPMENT ABBREVIATION (FE, SF, HY, ETC. SEE ABBREVIATIONS ON THIS DWG.) EQUIPMENT NUMBER
DETAIL/PART PLAN NUMBER IDENTIFICATION:	
	DETAIL/PART PLAN NUMBER DRAWING NUMBER



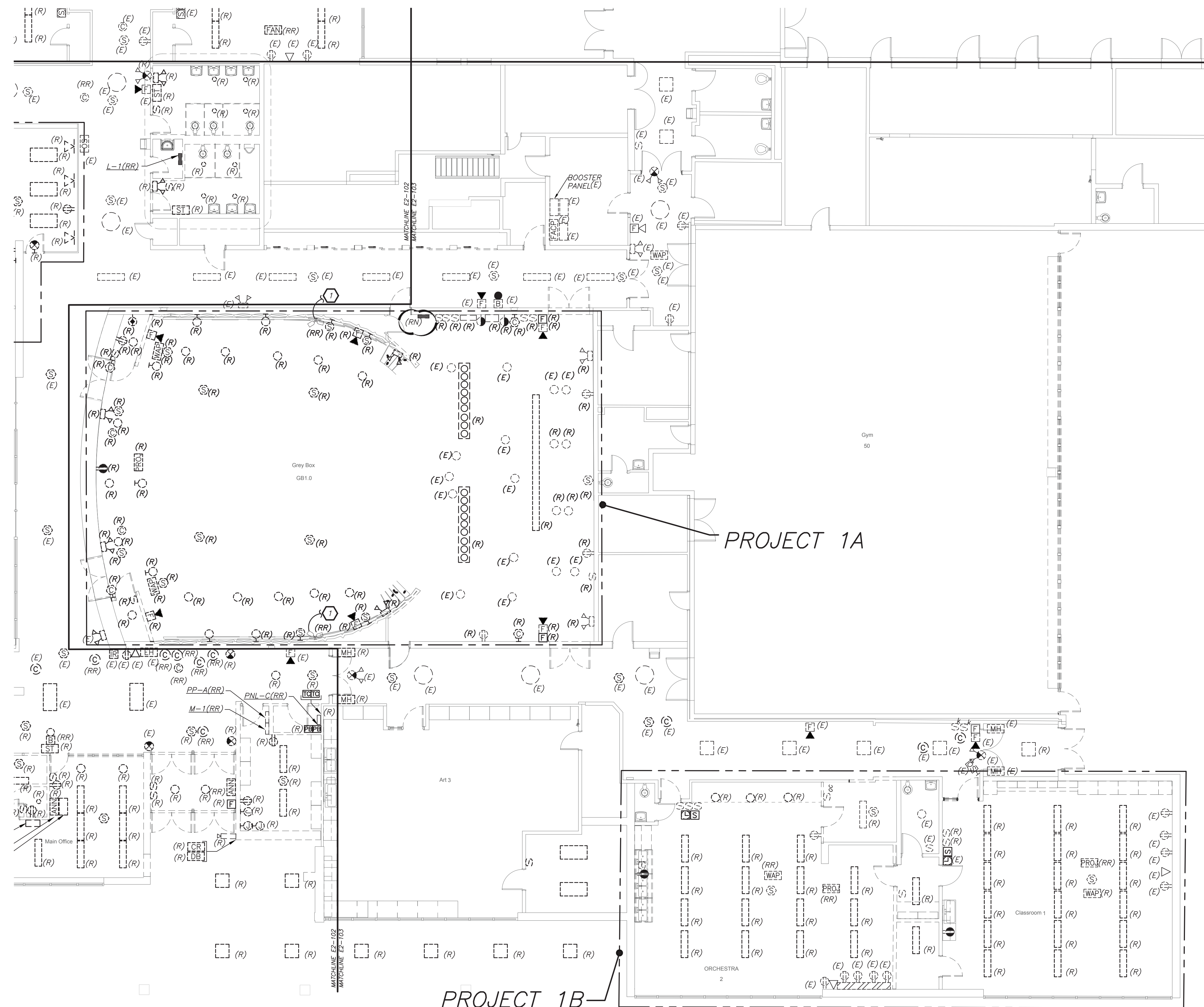
1. REMOVE AND REINSTALL SMOKE DETECTORS IN THE CORRIDORS WHERE CEILING IS BEING REPLACED. MAINTAIN THE EXISTING FIRE ALARM LOOP CONTINUITY FOR ALL EXISTING DEVICES REMAINING. COORDINATE WITH SCHOOL DISTRICT AND CONSTRUCTION MANAGER BEFORE THE START OF ANY WORK.

2. REMOVAL AND RELOCATING OF ALL SECURITY CAMERAS AND WIRELESS ACCESS POINTS SHALL BE DONE BY OWNER. COORDINATE WITH SCHOOL DISTRICT AND CONSTRUCTION MANAGER BEFORE THE START OF ANY WORK.

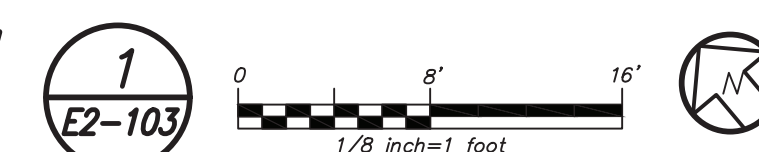
1 ELECTRICAL CONTRACTOR SHALL REMOVE EXISTING LIGHT FIXTURES, PROTECT WITH BUBBLE WRAP, STORE, CLEAN DURING DEMOLITION WORK. ALL WIRING TO BE COILED UP AND SECURED. ONCE THE RENOVATION WORK IS COMPLETE RE-INSTALL AND RECONNECT ALL LIGHTING TO EXISTING WIRING. NEW CONTROLS TO BE PROVIDED FOR THESE LIGHTS. REFER TO DETAIL 5 ON E-702 FOR NEW LIGHTING CONTROL SYSTEM.

1. CORRIDOR CEILING SHALL BE REMOVED BY OTHER CONTRACTORS, THIS ELECTRICAL CONTRACTOR SHALL COORDINATE AND BE RESPONSIBLE TO RE-SUPPORT ALL LOW VOLTAGE WIRING, TELEPHONE, DATA, FIRE ALARM, SECURITY, AND CEILING TILE, GRID AND NOT PROPERLY SUPPORTED WITH U-HOOKS BEFORE THE CEILING REMOVAL. THIS CONTRACTOR SHOULD ANTICIPATE THAT THERE WILL BE APPROXIMATELY 2-20 CABLES ALONG THE WALL AGAINST THE CLASSROOMS ON BOTH SIDES OF THE CORRIDOR. THERE WILL BE APPROXIMATELY 30 TO 50 LOW VOLTAGE CABLES AND 5 TO 10 MC ARMORED LINE VOLTAGE CABLES. THE LOW VOLTAGE CABLE TYPE CONSISTS OF DATA, TELEPHONE, FIRE, ALARM, SECURITY, CAMERAS, AND MECHANICAL EQUIPMENT CONTROL WIRING.

2. ALL CEILING MOUNTED FIRE ALARM DEVICES (SMOKE DETECTORS, CARBON DETECTORS, ETC.) ANY SECURITY DEVICES (MOTION SENSORS, ETC. EXCLUDING CAMERAS) SHALL BE RE-SUPPORTED AND MAINTAINED DURING THE DURATION OF CEILING TILE REMOVAL AND REINSTALLATION. ANY AND ALL DEVICES ON THIS CONTRACTOR SHALL RE-INSTATE AND REMOUNT ALL DEVICES IN NEW CEILING TILES IN A NEAT AND CLEAN MANNER. ALL CEILING MOUNTED CAMERAS AND WAF'S WILL BE THE RESPONSIBILITY OF THE SCHOOL DISTRICT TO REMOVE AND REINSTALL.
3. THE CORRIDOR WORKING SEQUENCE OF THE WORK SHALL BE COORDINATED WITH COORDINATION MEETING, SCHOOL DISTRICT AND OTHER CONTRACTORS BEFORE THE START OF ANY WORK.



PARTIAL FIRST FLOOR REMOVAL PLAN  
(REMOVALS) (PROJECT 1, 1A & 1B)



Architecture. Planning. Interiors

71 Old Post Road  
P.O. Box 1020  
Southport, CT 06890  
(203) 256-8700



259 Water Street Suite 1L  
Warren , RI 02885 USA  
+1 401-289-2789



**CONSULTING ENGINEERS**  
39 MARBLE AVE PLEASANTVILLE, NY 10570  
914.328.6060 GENERAL@BGA-ENG.com www.BGA-ENG.com

Construction Manager  
SAVIN ENGINEERS, P.C.  
3 Campus Drive  
Pleasantville, NY 10570  
914-769-3200

**Structural Engineer**  
**ODEH ENGINEERS**  
1223 Mineral Spring Ave  
North Providence, RI 02904  
401-724-1771

Civil Engineer  
WESTON & SAMPSON  
1 Winners Circle, Suite 130  
Albany, NY 12205  
518-463-4400

Acoustic Consultant  
DP DESIGN  
12 Cold Spring Street  
Providence, RI  
401-861-3218

AV Consultant  
CAVANAUGH TOCCI  
327 F Boston Post Road  
Sudbury, MA 01776-3027  
978-443-7871

SED#: 6618-0001-0001-023

PROJECT

Rye City Schools  
5 Theodore Fremd Ave, Suite B-101

Osborn Elementary School

10 Osborn Road, Rye NY 10580

## PART FIRST FLOOR REMOVAL PLAN

PROJECT 1 1A &amp; 1B

SEAL & SIGNATURE	DATE:	12/18/19
	PROJECT No:	9200
	DRAWING BY:	BGA
	CHK BY:	BGA
	DWG No:	
E2-103		

BEFORE FABRICATION THIS CONTRACTOR SHALL  
VERIFY ALL MEASUREMENTS AND CONDITIONS ON  
JOB AND COORDINATE HIS WORK WITH THE WORK  
OF ALL OTHER CONTRACTORS



**WORK NOTES:**

- NOT USED.
- CIRCUIT NEW EMERGENCY LIGHTING TO EXISTING EMERGENCY CIRCUIT. EC TO CONFIRM CIRCUIT IN FIELD. PROVIDE 2#12+1#12G IN 3/4" FROM NEW LIGHTS TO EXISTING LIGHT FIXTURES.
- REFER TO LIGHTING CONTROL WIRING DIAGRAM ON DRAWING E-702 DETAIL 5 AND SPECIFICATION FOR MORE INFORMATION.
- CIRCUIT NEW NORMAL LIGHTING ON EXISTING LIGHTING CIRCUIT IN THIS AREA. CIRCUIT NUMBER ARE FOR REFERENCE ONLY. EC TO CONFIRM CIRCUIT # IN FIELD. PROVIDE 2#12+1#12G IN 3/4" FROM SOURCE PANELBOARD TO FEED NEW LIGHT FIXTURES.
- CIRCUIT EXTERIOR LIGHTING FIXTURE TYPE "Z" TO INTERIOR NORMAL LIGHTING CIRCUIT. FIXTURE SHALL BE CONTROLLED VIA INTEGRAL PHOTOCELL AND OCCUPANCY SENSOR. INCLUDE SELF CONTAINED BATTERY PACKS TO OVERRIDE ALL CONTROLS IN EVENT OF EMERGENCY.
- PROVIDE NEW EXTERIOR EMERGENCY LIGHT FIXTURE "Z1" AND CONNECT TO NEW EMERGENCY AND NORMAL LIGHTING CIRCUIT CONNECTED TO LVS RELAY SEE NOTE 7. FIXTURE SHALL BE CONTROLLED VIA NEW REMOTE PHOTOCELL AND OCCUPANCY SENSOR. REFER TO DETAIL 8/E2-701 FOR WIRING DIAGRAM. UPON INTERRUPTION OF NORMAL POWER ENTIRE LIGHT CIRCUIT FOR EXTERIOR LIGHT FIXTURE SHALL ILLUMINATE REGARDLESS OF PHOTOCELL OR OCCUPANCY CONTROL POSITION OF OPERATION.
- PROVIDE UL924 RELAY SIMILAR TO LVS MODEL EPC-1-D-F TO OVERRIDE REMOTE PHOTOCELL AND OCCUPANCY SENSOR FOR EXTERIOR MOUNTED LIGHTING FIXTURE "Z1." CONNECT TO EMERGENCY AND NORMAL CIRCUIT SERVING THE AREA AHEAD OF ANY LOCAL SWITCHING. REFER TO DETAIL 8/E2-701 FOR ADDITIONAL INFORMATION.
- PROVIDE TORK 2001 SERIES PHOTOCELL SENSOR AND HUBBELL LIGHTOWL #LO-IRWVRP-LWO DISABLE OCCUPANCY SENSOR. INCLUDE #JWVP POWER PACK MOUNTED ON THE BUILDING WALL TO OPERATE TYPE "Z1" EXTERIOR EMERGENCY LIGHTING FIXTURE.
- CIRCUIT EXIT LIGHTS TO THE EMERGENCY LIGHTING CIRCUIT IN THIS AREA, AHEAD OF ANY SWITCHING.

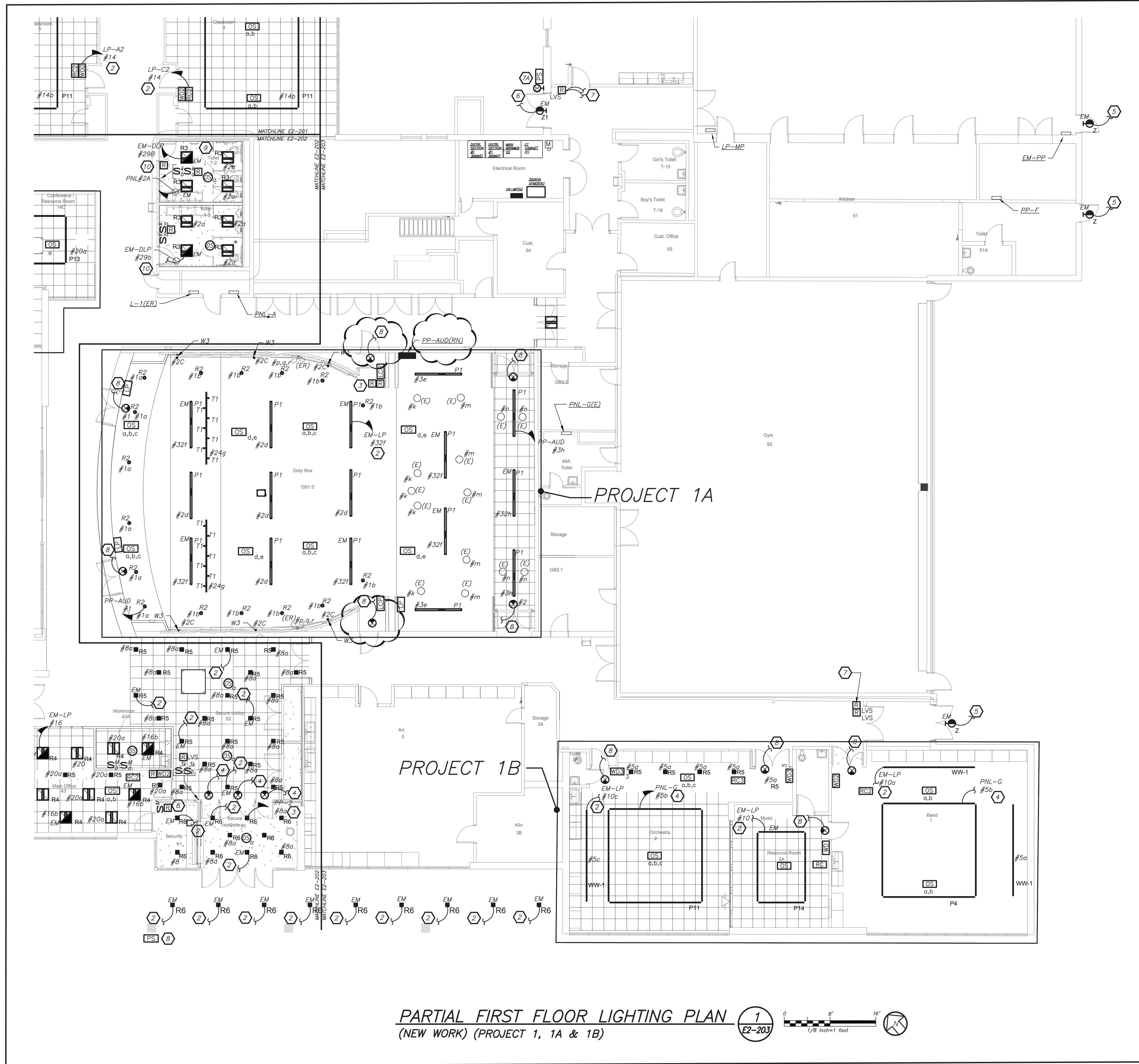
**LIGHTING CONTROL AND SEQUENCE OF OPERATION:**

- CLASSROOMS, MAKER SPACES, CONFERENCE ROOM AND LIBRARY ARE CONTROLLED VIA MANUAL ON DIMMABLE WALL SWITCH AND OCCUPANCY SENSORS. EACH CLASSROOMS CONSISTS OF FULL DIMMING CAPABILITY OF THREE ZONES. WALL SWITCHES CONSISTS OF 'A', 'B', 'C' OFF, 'RAISE', AND 'LOWER' BUTTONS. THE OCCUPANCY SENSORS SHALL HAVE THE AUTO OFF FEATURE WHICH SHALL TURN ALL LIGHTS OFF AFTER 20 MINUTES WHEN THE ROOM IS VACANT. UL 924 EMERGENCY LIGHTING RELAY ARE INCLUDED TO OVERRIDE SWITCH AND FORCE EMERGENCY LIGHTS ON 100% IN THE EVENT OF EMERGENCY.
- OFFICES AND SUPPORT SUITS ARE CONTROLLED VIA MANUAL ON DIMMABLE WALL SWITCH AND OCCUPANCY SENSORS. EACH OFFICE CONSISTS OF FULL DIMMING CAPABILITY. WALL SWITCHES CONSISTS OF 'ON', 'RAISE', 'LOWER', AND 'OFF' BUTTONS. THE OCCUPANCY SENSORS SHALL HAVE THE AUTO OFF FEATURE WHICH SHALL TURN ALL LIGHTS OFF AFTER 20 MINUTES WHEN THE ROOM IS VACANT. UL 924 EMERGENCY LIGHTING RELAY ARE INCLUDED TO OVERRIDE SWITCH AND FORCE EMERGENCY LIGHTS ON 100% IN THE EVENT OF EMERGENCY.
- ALL RENOVATED LOBBY AREAS SHALL BE CONTROLLED VIA EXISTING LOCAL WALL SWITCHES. OVER LAPPED LONG RANGE OCCUPANCY SENSORS (AUTO ON, AUTO OFF) IN EACH CORRIDOR WILL FUNCTION INDEPENDENTLY AS LOCAL ZONES.
- EXTERIOR BUILDING MOUNTED LIGHTS (TYPE Z) ARE CONTROLLED VIA BUILT-IN PHOTOCELL AND STEP-DIM MOTION SENSORS. IN BUILT BATTERY BACKUP SHALL OVERRIDE ALL SENSORS (PHOTOCELL AND OCCUPANCY SENSOR) IN THE EVENT OF EMERGENCY AT EGRESS DOORS AS SHOWN.
- EXTERIOR BUILDING MOUNTED LIGHTS (TYPE Z1) ARE CONTROLLED VIA REMOTE PHOTOCELL AND STEP-DIM MOTION SENSORS. PROVIDE UL 924 EMERGENCY LIGHTING RELAY TO BYPASS ALL SENSORS (PHOTOCELL AND OCCUPANCY SENSOR) IN THE EVENT OF EMERGENCY AT EGRESS DOORS AS SHOWN.

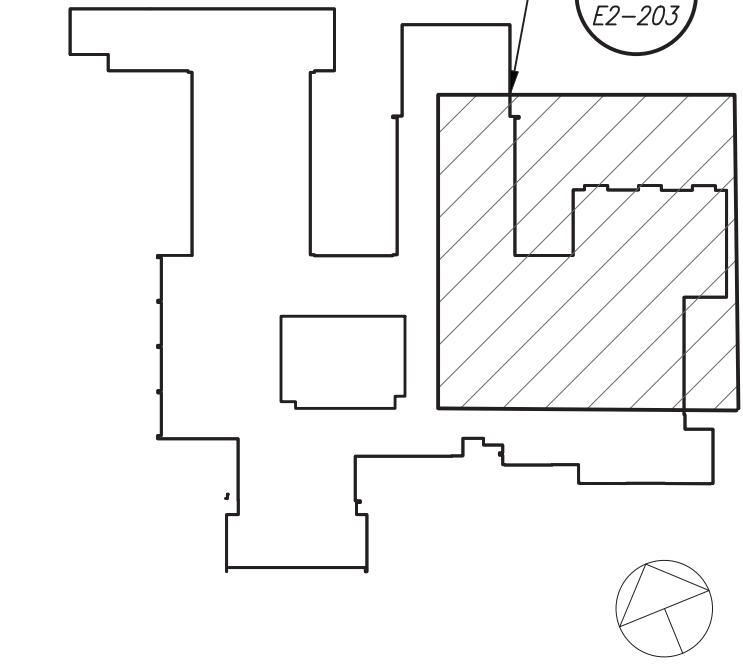
**GENERAL NOTES:**

- REFER TO DRAWING E2-001 FOR LEGEND AND LIGHTING CONTROL AND E2-601 FOR LIGHTING FIXTURE SCHEDULE.
- REFER TO DRAWING E2-600 SERIES FOR PANELBOARD SCHEDULES.
- REFER TO DRAWING E2-701 FOR LIGHTING CONTROL WIRING DIAGRAMS AND DETAILS.
- NORMAL SIDE SENSING LINE ON ALL EMERGENCY LIGHTING RELAY SHALL BE CIRCUITED TO THE NORMAL LIGHTING CIRCUIT IN THE ROOM/AREA IT SERVES.
- FOR ALL AREAS CONTROLLED BY ROOM CONTROLLER "RC", ELECTRICAL CONTRACTOR IS TO CIRCUIT ROOM CONTROLLER, THEN EXTEND LINE VOLTAGE CIRCUITRY TO EACH OF THE LIGHT FIXTURES DEPENDENT ON CONTROL ZONES. REFER TO ROOM CONTROLLER WIRING DIAGRAM DETAILS ON DRAWING E703.
- ALL EXIT LIGHTS SHALL BE CIRCUITED TO NORMAL LIGHTING CIRCUIT IN THE AREA, AHEAD OF ANY SWITCHING.
- SET LIGHTING CONTROL SENSORS TO HIGHEST SENSITIVITY AVAILABLE PRIOR TO INSTALLATION.

**SPECIAL NOTE:** THIS CONTRACTOR SHALL RECEIVE SIGN-OFF FROM AV CONSULTANT AND ARCHITECT BEFORE THE START OF ANYWORK OF THE EXACTION LOCATION OF ALL DEVICES, RECEPTACLES, JUNCTION BOXES, FLOOR BOXES, ETC SHALL BE MOUNTED WITHIN GREY BOX AND LIBRARY. IF ELECTRICAL CONTRACTOR DOES NOT RECEIVE WRITTEN CONFIRMATION IT WILL BE HIS RESPONSIBILITY TO RELOCATE ALL ITEMS AT NO ADDITIONAL COST TO OWNER.



Revision Schedule		
No.	Description	Date
1	SED Submission	09/15/2020
2	SED Submission Addendum#1	01/08/2021
3	ISSUED FOR BID	01/19/2021
4	BID ADDENDUM #1	01/29/2021



**Geddis Architects**

Architecture. Planning. Interiors

71 Old Post Road  
P.O. Box 1020  
Southport, CT 06890  
(203) 256-8700

**Fielding International**

Transforming Education by Design

259 Water Street Suite 1L  
Warren, RI 02885 USA  
+1 401-289-2789

**bga**

BARILE GALLAGHER & ASSOCIATES

CONSULTING ENGINEERS

39 MARBLE AVE. PLEASANTVILLE, NY 10570  
914.328.9500 GENERAL@BGA-ENG.COM WWW.BGA-ENG.COM

Construction Manager  
SAVIN ENGINEERS, P.C.  
3 Campus Drive  
Pleasantville, NY 10570  
914-769-3200

Structural Engineer  
ODEH ENGINEERS  
1223 Mineral Spring Ave  
North Providence, RI 02904  
401-724-1771

Civil Engineer  
WESTON & SAMPSON  
1 Winners Circle, Suite 130  
Albany, NY 12205  
518-463-4400

Acoustic Consultant  
DP DESIGN  
12 Cold Spring Street  
Providence, RI  
401-861-3218

AV Consultant  
CAVANAUGH TOCCI  
327 F Boston Post Road  
Sudbury, MA 01776-3027  
978-443-7871

SED#: 6618-0001-0001-023

PROJECT

Rye City Schools  
555 Theodore Fremd Ave, Suite B-101

Osborn Elementary School

10 Osborn Road, Rye NY 10580

PART FIRST FLOOR  
LIGHTING PLAN

PROJECT 1, 1A & 1B

SEAL & SIGNATURE DATE: 12/18/19  
PROJECT No: 9200  
DRAWING BY: BGA  
CHK BY: BGA  
DWG No: E2-203

BEFORE FABRICATION THIS CONTRACTOR SHALL VERIFY ALL MEASUREMENTS AND CONDITIONS ON JOB AND COORDINATE HIS WORK WITH THE WORK OF ALL OTHER CONTRACTORS



# GENERAL NOTES:

1. REFER TO ELECTRICAL RISER DIAGRAMS ON DRAWING E2-501 FOR SCOPE OF WORK.
2. REFER TO PANELBOARD SCHEDULES ON DRAWINGS E2-601 AND E2-602 FOR BRANCH CIRCUITING INFORMATION.
3. REFER TO DRAWINGS E2-700 SERIES FOR DETAILS.
4. EXISTING BUILDING HAS FULL FIRE ALARM COVERAGE CONSISTING OF MANUAL PULL STATIONS, SMOKE DETECTORS, HEAT DETECTORS, HORN/STROBES, STROBES, MAGNETIC DOOR HOLDERS ETC. AREAS OF WORK ONLY SHOWN WITH NECESSARY MODIFICATIONS.

## WORK NOTES:

1. PROVIDE NEW SURFACE MOUNTED PUBLIC ADDRESS SYSTEM SPEAKERS THROUGH OUT THE CORRIDOR WITH MIN SPACE OF 30' BETWEEN EACH SPEAKERS. PROVIDE ALL NECESSARY ACCESSORIES IN THE HEADEND LOCATED IN THE MAIN OFFICE. PROVIDE NEW PLENUM RATED P.A. WIRING ABOVE HUNG CEILING, PLENUM RATED WIRING IN EMT IN EXPOSED UNFINISHED AREAS AND PLENUM RATED WIRING IN WIREMOLD IN EXPOSED FINISHED AREA.
2. PROVIDE NEW SMOKE DETECTORS IN THE CORRIDORS AS INDICATED. ALL NEW FIRE ALARM WIRING TO BE CONNECTED TO NEAREST EXISTING LOOPS IN THE AREA.
3. CIRCUIT TO THE EXISTING CIRCUIT IN THE AREA.
4. RELOCATE EXISTING PUBLIC ADDRESS HEADEND, MASTER CLOCK, AND AMBER ALERT HEADEND TO NEW LOCATIONS AS SHOWN. REFER TO RISER DRAWINGS ON E2-501 FOR ADDITIONAL INFORMATION.
5. RELOCATE EXISTING PANELBOARD TO NEW LOCATION AS SHOWN. EXTEND ALL BRANCH WIRING TO NEW LOCATION. PROVIDE ALL NEEDED ACCESSORIES FOR COMPLETE FUNCTIONAL INSTALLATION.
6. CIRCUIT FOR CEILING MOUNTED POWER OUTLET FOR AV RACK. REFER TO AUDIO VISUAL DRAWINGS AVE2 SERIES FOR ADDITIONAL INFORMATION.
7. NOT USED
8. ALL OUTLET LOCATIONS SHALL BE COORDINATED WITH FURNITURE LAYOUT. COORDINATE WITH ARCHITECT BEFORE THE START OF ANY WORK.
9. ELECTRICAL CONTRACTOR SHALL COORDINATE LOCATION OF JUNCTION TO SERVE SINK POWER SUPPLY FOR FAUCET AND AUTOMATIC FLUSH VALVE PRIOR TO THE START OF ANYWORK WITH PLUMBING CONTRACTOR. POWER SUPPLY FURNISHED BY PLUMBING CONTRACTOR AND INSTALLED BY ELECTRICAL CONTRACTOR. ELECTRICAL CONTRACTOR SHALL INSTALL THE 120V CIRCUIT AND ALL LOW VOLTAGE WIRING ON THE LOAD SIDE OF POWER SUPPLY BY PLUMBING CONTRACTOR.
10. PROVIDE 2#12+1#12G IN 3/4" CONDUIT TO INDICATED PANELBOARD. PROVIDE NEW 1P-20 AMP CIRCUIT BREAKER IN AVAILABLE SPACE. NEW CIRCUIT BREAKER SHALL MATCH EXISTING PANEL FRAME SIZE, TYPE AND AIC RATING.
11. PROVIDE POWER FOR FIRE SHUTTERS, AND INTERCONNECT WITH RAISE AND LOWER SWITCH. FIRE SHUTTER SHALL BE INSTALLED WITH FIRE ALARM VIA INTERFACE MODULE AS SHOWN.
12. PROVIDE NEW 30 AMP-3P BREAKER IN EXISTING PNL-BP. MATCH EXISTING. PROVIDE 3#10+1#10G-3/4" FROM PUMPS TO INDICATED PANELBOARD.
13. PROVIDE GF1 OUTLET FOR CONDENSATE PUMP. COORDINATE EXACT MOUNTING HEIGHTS WITH HVAC CONTRACTOR.
14. CIRCUIT FOR CEILING MOUNTED POWER OUTLET FOR PROJECTOR. REFER TO AUDIO VISUAL DRAWINGS AVE2 SERIES FOR ADDITIONAL INFORMATION.

**SPECIAL NOTE: THIS CONTRACTOR SHALL RECEIVE SIGN-OFF FROM AV CONSULTANT AND ARCHITECT BEFORE THE START OF ANYWORK OF THE EXACT LOCATION OF ALL DEVICES, RECEPTACLES, JUNCTION BOXES, FLOOR BOXES, ETC SHALL BE MOUNTED WITHIN GREY BOX AND LIBRARY. IF ELECTRICAL CONTRACTOR DOES NOT RECEIVE WRITTEN CONFIRMATION IT WILL BE HIS RESPONSIBILITY TO RELOCATE ALL ITEMS AT NO ADDITIONAL COST TO OWNER.**

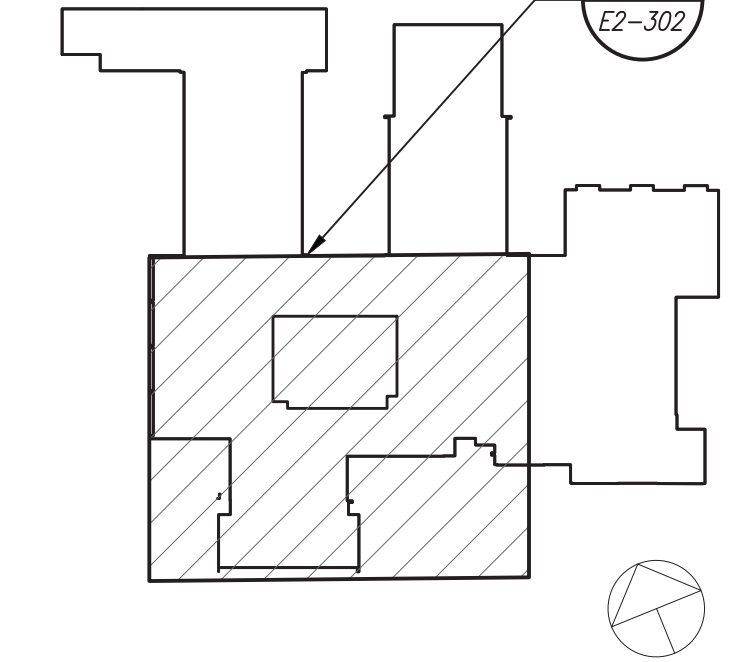


PARTIAL FIRST FLOOR POWER PLAN  
(NEW WORK) (PROJECT 1 & 2)

1  
E2-302

0 8' 16'  
1/8" inch = 1' foot

Revision Schedule		
No.	Description	Date
1	SED Submission	09/15/2020
2	SED Submission Addendum#1	01/08/2021
3	ISSUED FOR BID	01/19/2021
4	BID ADDENDUM #1	07/29/2021



**Geddis Architects**  
Architecture. Planning. Interiors  
71 Old Post Road  
P.O. Box 1020  
Southport, CT 06890  
(203) 256-8700

**Fielding International**  
Transforming Education by Design  
259 Water Street Suite 1L  
Warren, RI 02885 USA  
+1 401-289-2789

**BGA**  
BARILE GALLAGHER & ASSOCIATES  
CONSULTING ENGINEERS  
39 MARBLE AVE. PLEASANTVILLE, NY 10570  
914.328.9000 GENERAL@BGA-ENG.COM www.BGA-ENG.COM

**Construction Manager**  
SAVIN ENGINEERS, P.C.  
3 Campus Drive  
Pleasantville, NY 10570  
914-769-3200  
**Structural Engineer**  
ODEH ENGINEERS  
1223 Mineral Spring Ave  
North Providence, RI 02904  
401-724-1771  
**Civil Engineer**  
WESTON & SAMPSON  
1 Winners Circle, Suite 130  
Albany, NY 12205  
518-463-4400  
**Acoustic Consultant**  
DP DESIGN  
12 Cold Spring Street  
Providence, RI  
401-861-3218  
**AV Consultant**  
CAVANAUGH TOCCI  
327 F Boston Post Road  
Sudbury, MA 01776-3027  
978-443-7871

SED#: 6618-0001-0001-023

PROJECT  
Rye City Schools  
555 Theodore Fremd Ave, Suite B-101  
Osborn Elementary School  
10 Osborn Road, Rye NY 10580

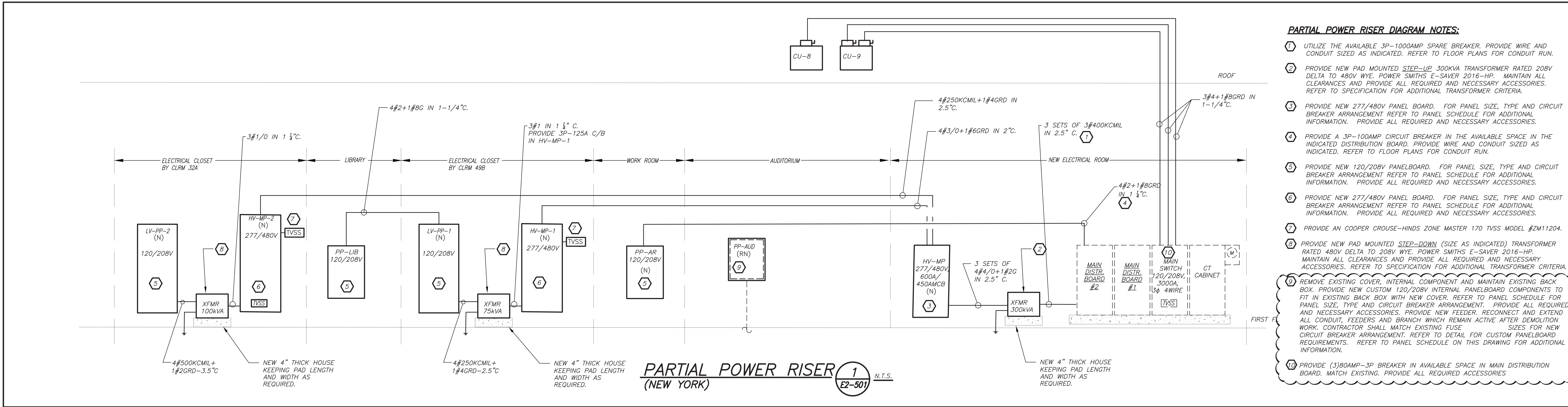
PART FIRST FLOOR  
POWER PLAN

PROJECT 1 & 2

SEAL & SIGNATURE	DATE: 12/18/19
	PROJECT No: 9200
	DRAWING BY: BGA
	CHK BY: BGA
	DWG No: E2-302

BEFORE FABRICATION THIS CONTRACTOR SHALL VERIFY ALL MEASUREMENTS AND CONDITIONS ON JOB AND COORDINATE HIS WORK WITH THE WORK OF ALL OTHER CONTRACTORS



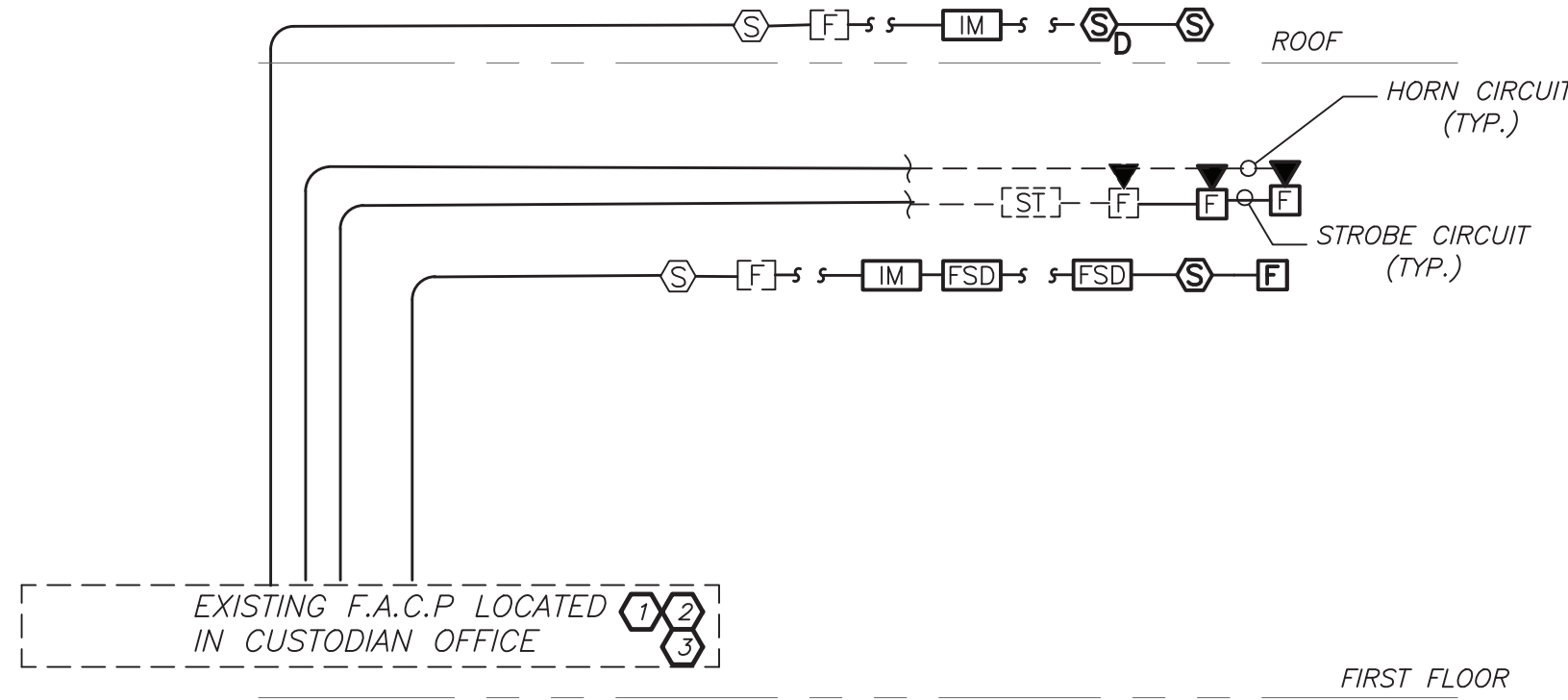


#### PARTIAL POWER RISER DIAGRAM NOTES:

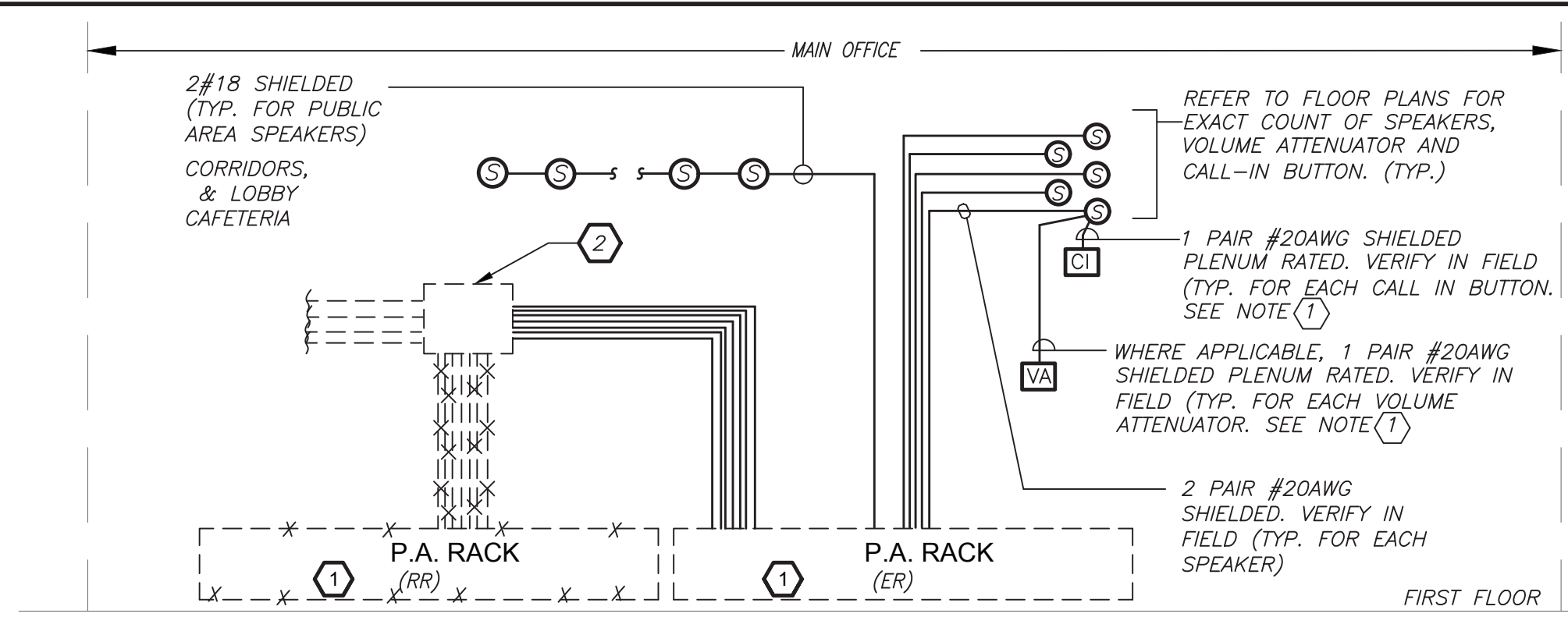
- ① UTILIZE THE AVAILABLE 3P-1000AMP SPARE BREAKER. PROVIDE WIRE AND CONDUIT SIZED AS INDICATED. REFER TO FLOOR PLANS FOR CONDUIT RUN.
- ② PROVIDE NEW PAD MOUNTED STEP-UP 300KVA TRANSFORMER RATED 208V DELTA TO 480V WYE. POWER SMITHS E-SAVER 2016-HP. MAINTAIN ALL CLEARANCES AND PROVIDE ALL REQUIRED AND NECESSARY ACCESSORIES. REFER TO SPECIFICATION FOR ADDITIONAL TRANSFORMER CRITERIA.
- ③ PROVIDE NEW 277/480V PANEL BOARD. FOR PANEL SIZE, TYPE AND CIRCUIT BREAKER ARRANGEMENT REFER TO PANEL SCHEDULE FOR ADDITIONAL INFORMATION. PROVIDE ALL REQUIRED AND NECESSARY ACCESSORIES.
- ④ PROVIDE A 3P-100AMP CIRCUIT BREAKER IN THE AVAILABLE SPACE IN THE INDICATED DISTRIBUTION BOARD. PROVIDE WIRE AND CONDUIT SIZED AS INDICATED. REFER TO FLOOR PLANS FOR CONDUIT RUN.
- ⑤ PROVIDE NEW 120/208V PANELBOARD. FOR PANEL SIZE, TYPE AND CIRCUIT BREAKER ARRANGEMENT REFER TO PANEL SCHEDULE FOR ADDITIONAL INFORMATION. PROVIDE ALL REQUIRED AND NECESSARY ACCESSORIES.
- ⑥ PROVIDE NEW 277/480V PANEL BOARD. FOR PANEL SIZE, TYPE AND CIRCUIT BREAKER ARRANGEMENT REFER TO PANEL SCHEDULE FOR ADDITIONAL INFORMATION. PROVIDE ALL REQUIRED AND NECESSARY ACCESSORIES.
- ⑦ PROVIDE AN COOPER CROUSE-HINDS ZONE MASTER 170 TVSS MODEL #ZM11204.
- ⑧ PROVIDE NEW PAD MOUNTED STEP-DOWN (SIZE AS INDICATED) TRANSFORMER RATED 480V DELTA TO 208V WYE. POWER SMITHS E-SAVER 2016-HP. MAINTAIN ALL CLEARANCES AND PROVIDE ALL REQUIRED AND NECESSARY ACCESSORIES. REFER TO SPECIFICATION FOR ADDITIONAL TRANSFORMER CRITERIA.
- ⑨ REMOVE EXISTING COVER, INTERNAL COMPONENT AND MAINTAIN EXISTING BACK BOX. PROVIDE NEW CUSTOM 120/208V INTERNAL PANELBOARD COMPONENTS TO FIT IN EXISTING BACK BOX WITH NEW COVER. REFER TO PANEL SCHEDULE FOR PANEL SIZE, TYPE AND CIRCUIT BREAKER ARRANGEMENT. PROVIDE ALL REQUIRED AND NECESSARY ACCESSORIES. PROVIDE NEW FEEDER, RECONNECT AND EXTEND ALL CONDUIT, FEEDERS AND BRANCH WHICH REMAIN ACTIVE AFTER DEMOLITION WORK. CONTRACTOR SHALL MATCH EXISTING FUSE SIZES FOR NEW CIRCUIT BREAKER ARRANGEMENT. REFER TO DETAIL FOR CUSTOM PANELBOARD REQUIREMENTS. REFER TO PANEL SCHEDULE ON THIS DRAWING FOR ADDITIONAL INFORMATION.
- ⑩ PROVIDE (3)80AMP-3P BREAKER IN AVAILABLE SPACE IN MAIN DISTRIBUTION BOARD. MATCH EXISTING. PROVIDE ALL REQUIRED ACCESSORIES

#### FIRE ALARM RISER GENERAL NOTES:

1. FIRE ALARM WIRING DIAGRAMS SHOWN ARE FOR GENERAL ARRANGEMENT ONLY. ELECTRICAL CONTRACTOR SHALL VERIFY AND OBTAIN POINT TO POINT WIRING DIAGRAM PRIOR TO INSTALLATION FROM MANUFACTURER.
2. PERMITS AND APPROVALS NECESSARY FOR INSTALLATION OF THE WORK SHALL BE OBTAINED PRIOR TO THE COMMENCEMENT OF THE WORK. ALL PERMIT COSTS AND INSPECTION FEES SHALL BE INCLUDED AS PART OF THIS CONTRACT.
3. IN AREAS WHERE DUST AND DIRT WILL BE AIRBORNE DURING DEMOLITION AND CONSTRUCTION THE CONTRACTOR SHALL PROVIDE PLASTIC WRAP OVER SMOKE DETECTORS AND THEN REMOVE ONCE SPACE IS CLEAN.
4. UNLESS DIRECTED OTHERWISE BY FIRE ALARM SYSTEM MANUFACTURER FIRE ALARM DEVICE WIRING SHALL BE AS FOLLOWS (FOR BIDDING PURPOSES ONLY):  
SPEAKER WIRING - #14 AWG TWISTED  
STROBE WIRING - #14 AWG TWISTED  
SIGNAL WIRING - #14 AWG TWISTED/SHIELDED  
THE WIRING SHALL HAVE THE FOLLOWING CHARACTERISTICS:  
A. A MINIMUM TEMPERATURE RATING OF 150 C  
B. A MINIMUM AVERAGE INSULATION THICKNESS OF 15 MILS  
C. A MINIMUM AVERAGE JACKET THICKNESS OF 25 MILS  
D. THE COLOR OF THE CABLE SHALL BE RED  
E. THE CABLE SHALL BE A TYPE FPLP (PLENUM TYPE) WHEN CONDUIT IS USED.  
SEE NOTE 5 FOR ADDITIONAL CLARIFICATION.  
F. THE CABLE SHALL BE VISIBLY MARKED EXTERNALLY THAT IT MEETS THE ABOVE REQUIREMENTS AND IS LISTED BY UL.  
CONFIRM WIRING TYPE AND QUANTITY WITH FIRE ALARM SYSTEM MANUFACTURER PRIOR TO PURCHASING.
5. PROVIDE MC FIRE ALARM CABLE WITH RED STRIPE AS MANUFACTURED BY AFC SERIES 1800 WHEN CABLE IS CONCEALED OR ABOVE HUNG CEILING. WHEN FIRE ALARM CABLE IS RUN EXPOSED IN FINISHED AREAS, CABLE SHALL RUN IN WIREMOLD V-700. WHEN FIRE ALARM CABLE IS RUN EXPOSED IN UNFINISHED AREAS, PROVIDE PLENUM RATED CABLE IN MIN. 3/4" CONDUIT.
6. SHUTDOWN OF HVAC SYSTEM EQUIPMENT (NOT LIMITED TO, ROOF TOP EXHAUST FANS, ETC.) OF 1000 CFM OR GREATER, SHALL BE PERFORMED VIA A RELAY INTERFACE SYSTEM. SEND SIGNAL TO BUILDING AUTOMATED TEMPERATURE CONTROL (ATC) SYSTEM INDICATING SHUTDOWN HAS OCCURRED. EQUIPMENT RESTART SHALL BE BY BUILDING ATC SYSTEM UPON FIRE ALARM RESET TO NORMAL MODE. RESTART OF EQUIPMENT SHALL BE SEQUENTIAL.
7. AFTER THE SYSTEM IS COMPLETE, TEST ALL COMPONENTS IN ACCORDANCE WITH SEQUENCE OF OPERATION PRIOR TO FIRE DEPARTMENT INSPECTION.
8. COORDINATE F.A WORK WITH F.A VENDOR.
9. VERIFY EXACT QUANTITIES OF FIRE ALARM DEVICES WITH PLANS.
10. ALL DEVICES SHALL BE SUPERVISED AS PER N.E.P.A. 72. PROVIDE END OF LINE RESISTORS AS REQUIRED PER INDIVIDUAL MANUFACTURER. PROVIDE LOAD RELAYS AS REQUIRED FOR PROPER OPERATION OF EQUIPMENT.
11. THIS CONTRACTOR IS RESPONSIBLE FOR ALL PROGRAMMING AND MAPPING OF EACH DEVICE AS REQUIRED.



#### PART FIRE ALARM RISER 3 E2-501 N.T.S.

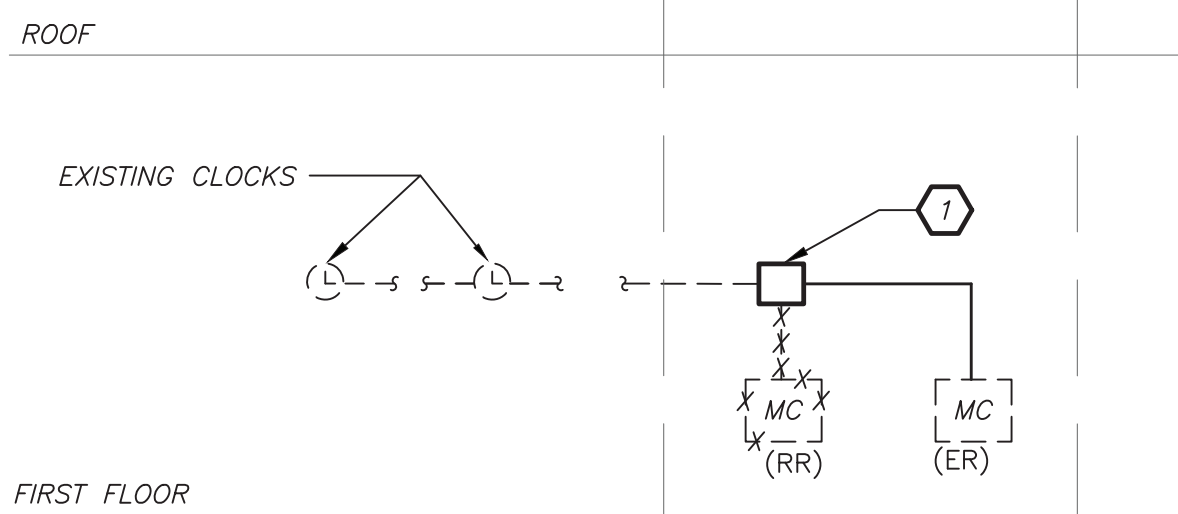


#### GENERAL NOTES:

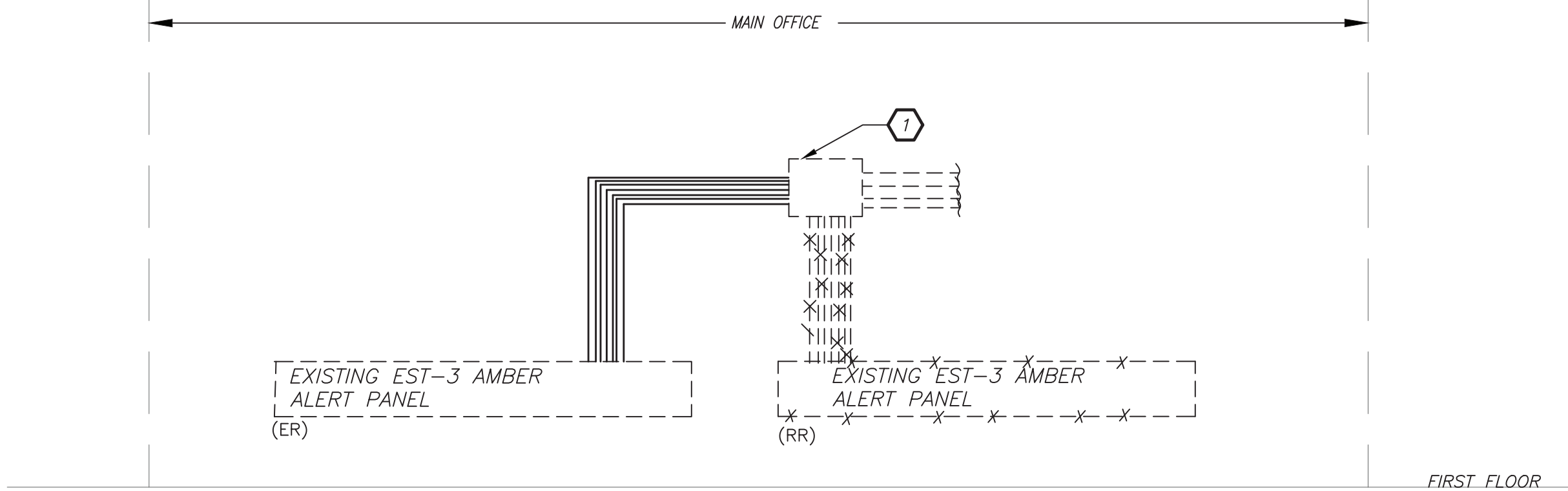
1. VERIFY EXACT QUANTITY AND LOCATION OF DEVICES ON PLAN DRAWINGS.
2. WIRING TYPES ARE SHOWN FOR REFERENCE ONLY. VERIFY EXACT WIRING REQUIREMENTS WITH MANUFACTURER.
3. ELECTRICAL CONTRACTOR SHALL PROVIDE PLENUM RATED WIRING AND RUN EXPOSED ABOVE ACCESSIBLE CEILING. IT SHALL BE RUN IN EMT CONDUIT WHERE EXPOSED, EXCEPT IN CORRIDORS AND OFFICES WIRING SHALL BE RUN IN STEEL SURFACE RACEWAY (SIMILAR TO WIREMOLD V-500 AND/OR V-700). WIRING SHALL ALSO BE RUN IN EMT FOR STUB-UPS IN CONCEALED WALLS.
4. SPEAKERS SHALL MATCH EXISTING TYPE. VERIFY WATTAGE TAP REQUIREMENTS IN FIELD.
5. ALL PROGRAMMING AND FINAL CONNECTIONS TO EXISTING P.A. SYSTEM SHALL BE BY SYSTEM MAINTENANCE CONTRACTOR. ALL COSTS ASSOCIATED WITH THIS SHALL BE BY ELECTRICAL CONTRACTOR.

#### WORK NOTES:

- ① EXISTING PA RACK SHALL BE REMOVED AND RELOCATED. PROVIDE NEW SWITCH ZONE CARD, AMPLIFIER, ETC. AS REQUIRED FOR COMPLETE INSTALLATION FOR NEW ADDED DEVICES. EXISTING SYSTEM IS DUKANE AND IS LOCATED IN MAIN OFFICE.
- ② PROVIDE NEW 24"x24"x6" SPLICE BOX WITH TERMINAL BLOCKS TO EXTEND ALL WIRING TO EXISTING RELOCATED PA RACK WITHIN MAIN OFFICE. SPLICING WIRING TOGETHER WITH TWIST TIES/TAPE IS NOT PERMITTED. PULL BOX SHALL BE INSTALLED ABOVE CEILING. FIRST FLOOR. REFER TO E2-102 AND E2-302 FOR ADDITIONAL INFORMATION.



#### PART CLOCK RISER DIAGRAM 5 E2-501 N.T.S.

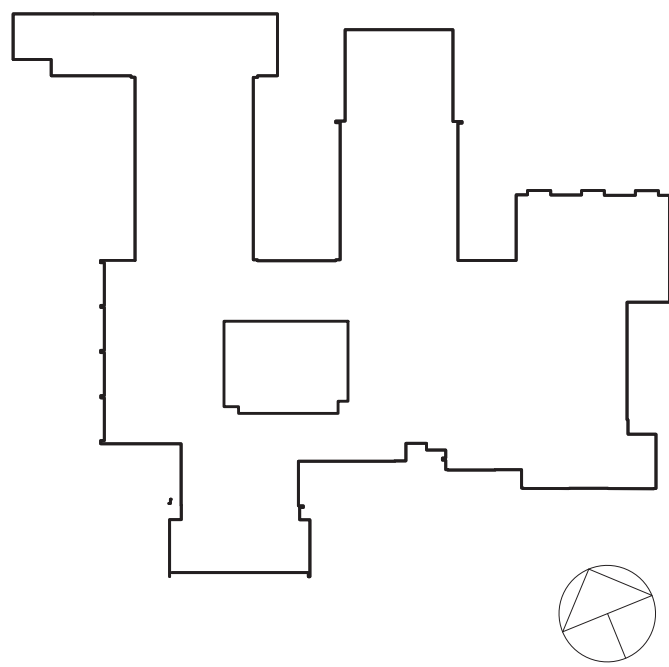


#### AMBER ALERT RISER WORK NOTES:

- ① PROVIDE NEW 12"x12"x6" SPLICE BOX WITH TERMINAL BLOCKS TO EXTEND ALL WIRING TO EXISTING RELOCATED AMBER ALERT PANEL LOCATION. SPLICING WIRING TOGETHER WITH TWIST TIES/TAPE IS NOT PERMITTED. PULL BOX SHALL BE INSTALLED ABOVE CEILING. REFER TO E2-102 AND E2-302 FOR ADDITIONAL INFORMATION.

BEFORE FABRICATION THIS CONTRACTOR SHALL VERIFY ALL MEASUREMENTS AND CONDITIONS ON JOB AND COORDINATE HIS WORK WITH THE WORK OF ALL OTHER CONTRACTORS

Revision Schedule		
No.	Description	Date
1	SED Submission	09/15/2020
2	SED Submission Addendum#1	01/08/2021
3	ISSUED FOR BID	01/19/2021
4	BID ADDENDUM #1	01/29/2021



**Geddis Architects**

Architecture. Planning. Interiors

71 Old Post Road  
P.O. Box 1020  
Southport, CT 06890  
(203) 256-8700



Transforming Education by Design

259 Water Street Suite 1L  
Warren, RI 02885 USA  
+1 401-289-2789



BARILE GALLAGHER & ASSOCIATES

CONSULTING ENGINEERS

39 MARBLE AVE. PLEASANTVILLE, NY 10570  
914.328.9900 GENERAL@BGA-ENG.COM www.BGA-ENG.COM

Construction Manager  
SAVIN ENGINEERS, P.C.  
3 Campus Drive  
Pleasantville, NY 10570  
914-769-3200

Structural Engineer  
ODEH ENGINEERS  
1223 Mineral Spring Ave  
North Providence, RI 02904  
401-724-1771

Civil Engineer  
WESTON & SAMPSON  
1 Winners Circle, Suite 130  
Albany, NY 12205  
518-463-4400

Acoustic Consultant  
DP DESIGN  
12 Cold Spring Street  
Providence, RI  
401-861-3218

AV Consultant  
CAVANAUGH TOCCI  
327 F Boston Post Road  
Sudbury, MA 01776-3027  
978-443-7871

SED#: 6618-0001-0001-023

PROJECT

Rye City Schools

555 Theodore Fremd Ave, Suite B-101

Osborn Elementary School

10 Osborn Road, Rye NY 10580

ELECTRICAL RISER

SEAL & SIGNATURE	DATE:	12/18/19
	PROJECT No:	9200
	DRAWING BY:	BGA
	CHK BY:	BGA
	DWG No:	E2-501