

BEFORE FABRICATION THIS CONTRACTOR SHALL VERIFY ALL MEASUREMENTS AND CONDITIONS ON JOB AND COORDINATE HIS WORK WITH THE WORK OF ALL OTHER CONTRACTORS

**BID PROJECTS**

- PROJECT 1: ALL WORK NOT INCLUDED IN PROJECTS 2 & 4 LISTED BELOW.
- PROJECT 2: LIBRARY RENOVATION & SUPPORT SERVICES SUITE
- ALTERNATE 2A: TELECOIL HEARING LOOP FOR LIBRARY
- ALTERNATE 2B: KIVA TIERED SEATING FOR LIBRARY
- ALTERNATE 2C: NEW FLOORING, CEILING AND LIGHTING IN CORRIDOR
- PROJECT 3: NOT USED
- PROJECT 4: ASPHALT SHINGLE ROOF & COPPER CAP FLASHING REPLACEMENT

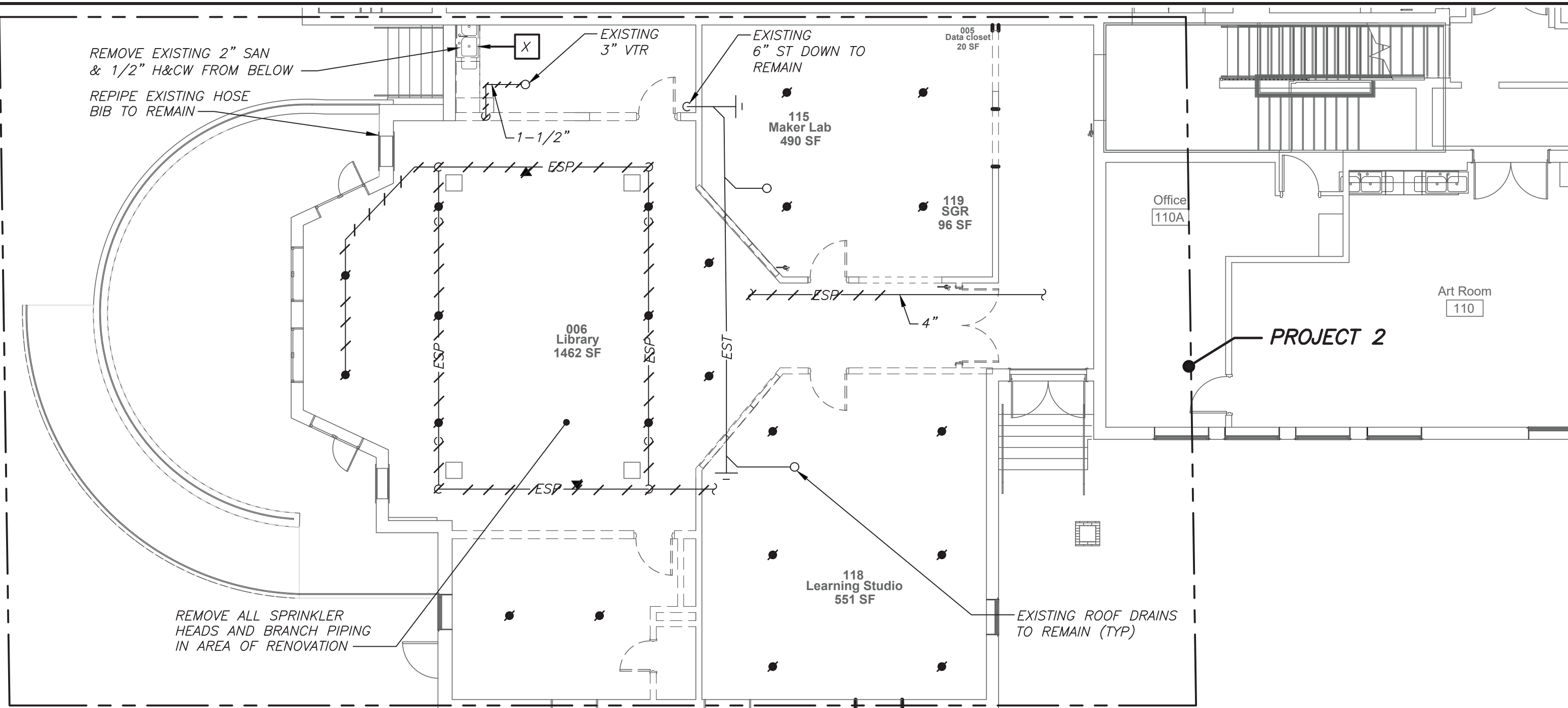
**SCHEDULE OF SPRINKLER  
BRANCH PIPING SIZES**

PIPE SIZE	MAX # OF SPRINKLER HEADS
1"	2
1 1/4"	3
1 1/2"	5
2"	10
2 1/2"	20
3"	40
3 1/2"	65
4"	100
5"	160
6"	275

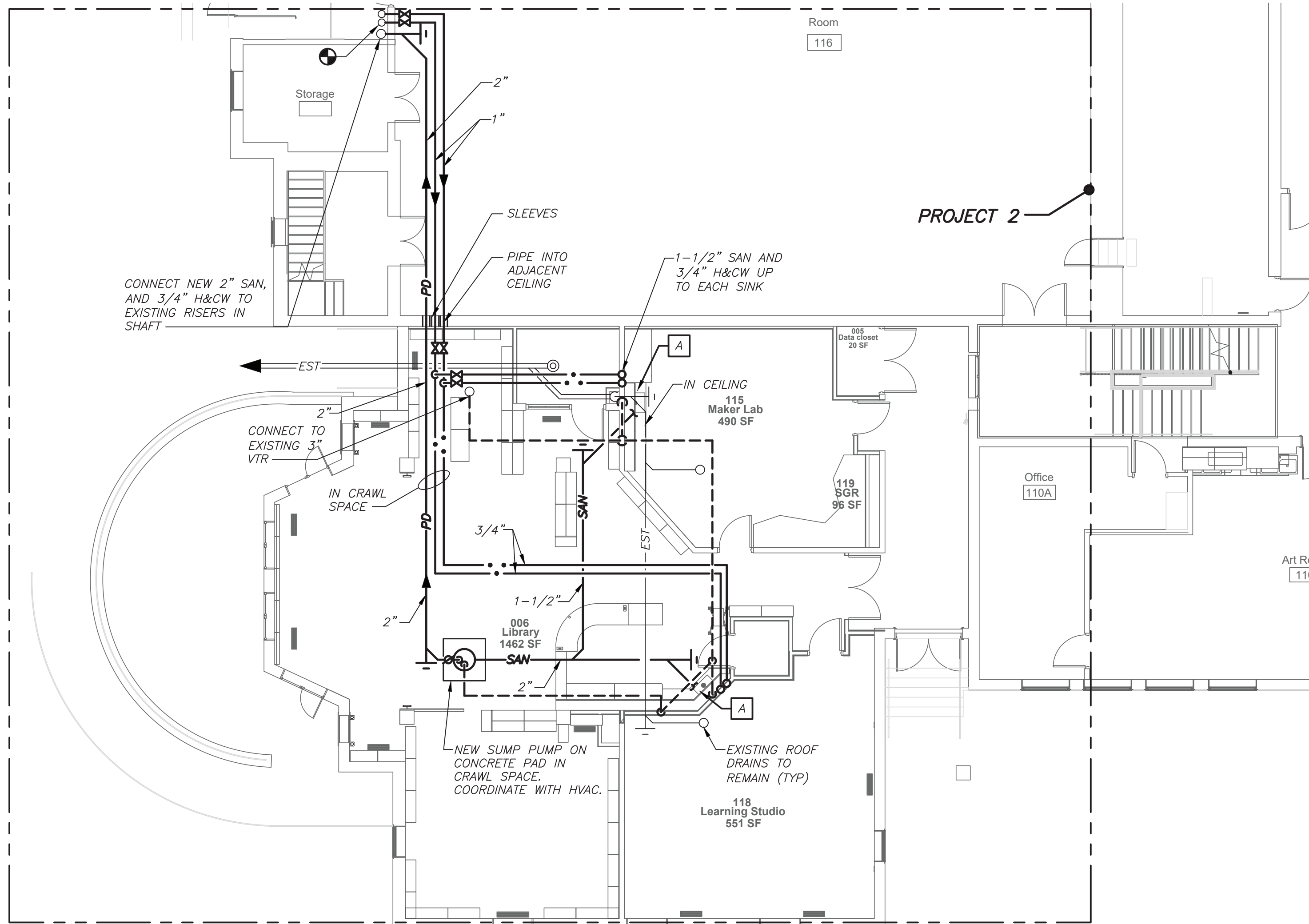
**NOTES**

- 1 BASED ON NFPA-13 PIPE SCHEDULE METHOD OF PIPE SIZING. HYDRAULIC METHOD WILL BE ACCEPTABLE AS WELL. SUBMIT SHOP DRAWINGS AND HYDRAULIC CALCULATIONS.
- 2 STEEL PIPE.

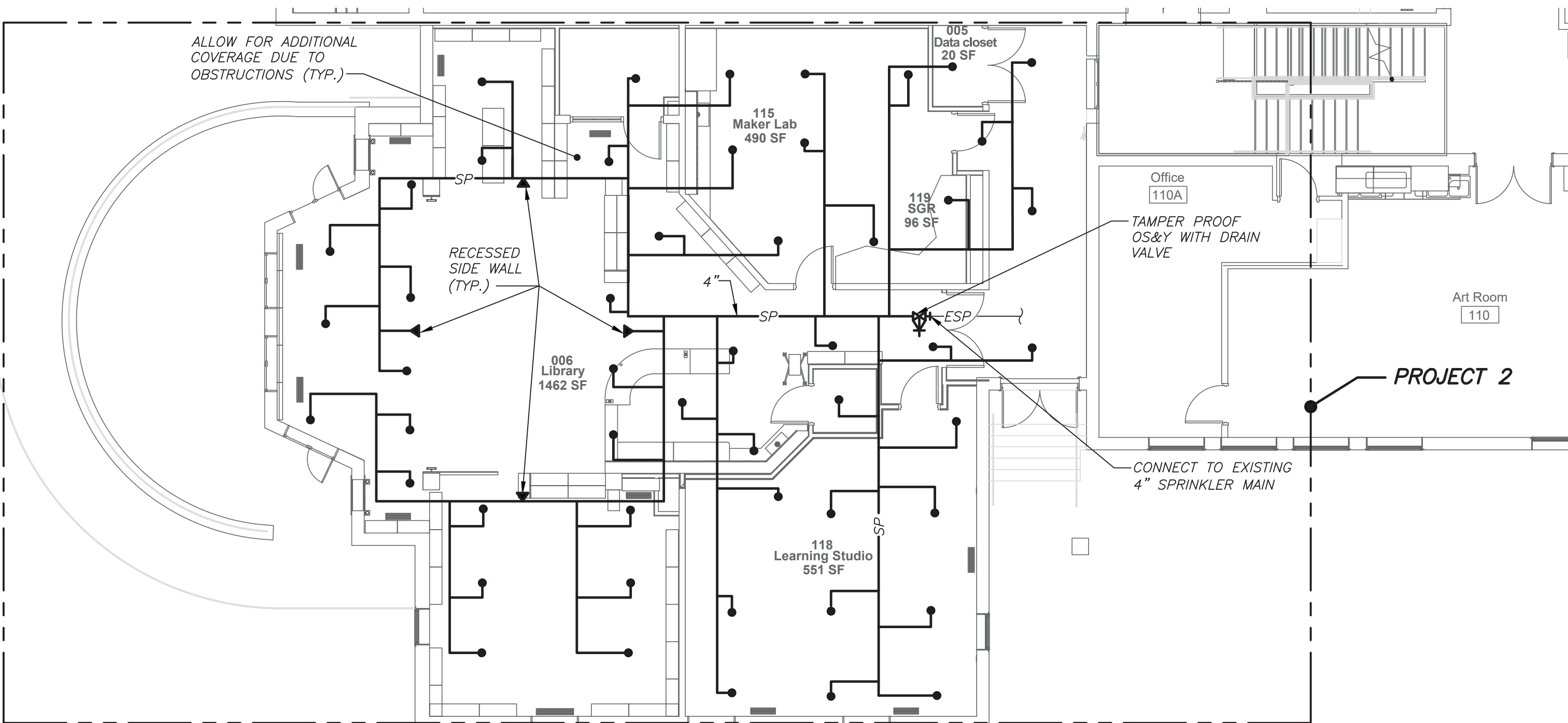
IN ALL AREAS WHERE CEILINGS ARE NOT BEING REPLACED, REMOVE TILES AND GRID AS REQUIRED TO PERFORM WORK AND REINSTALL FOR "AS NEW" CONDITION.



**PART FIRST FLOOR PLAN  
(REMOVALS) (PROJECT 2)**



**PART FIRST FLOOR PLAN  
(NEW WORK) (PROJECT 2)**



**PART FIRST FLOOR SPRINKLER PLAN  
(NEW WORK) (PROJECT 2)**

**LEGEND**

---	EXISTING PIPING, FIXTURES, ETC. TO REMAIN
++++	EXISTING PIPING, FIXTURES, ETC. TO BE REMOVED
----	NEW PIPING, FIXTURES, ETC.
---	COLD WATER PIPING
---	HOT WATER PIPING
---	HOT WATER RETURN PIPING
---	PLUMBING VENT PIPING
---	SANITARY PIPING
== SAN ==	SANITARY PIPING (UNDERGROUND)
== ST ==	STORM PIPING
== ST ==	STORM PIPING (UNDERGROUND)
== G ==	GAS PIPING
== SP ==	SPRINKLER PIPING
== EG ==	EXISTING GAS PIPING
== ESP ==	EXISTING SPRINKLER PIPING
→	FLOW DIRECTION WITHIN PIPE
+	CLEANOUT
⊙	CLEANOUT DECK PLATE
⊕	GATE VALVE
⊕	COMBINATION BALANCING & SHUT-OFF VALVE
⊕	OS & Y VALVE
⊕	CHECK VALVE
⊕	GAS SHUT OFF COCK
⊕	PIPE CONNS. (BOTTOM; TOP 45 OR 90; PIPE UP)
⊕	SPRINKLER HEAD
⊕	SIDEWALL SPRINKLER HEAD
⊕	PLUMBING FIXTURE IDENTIFICATION
⊕	POINT OF DISCONNECTION
⊕	POINT OF CONNECTION, NEW TO EXISTING
P.C.	PLUMBING CONTRACTOR
G.C.	GENERAL CONTRACTOR
HVAC	HVAC CONTRACTOR
VTR	VENT THRU ROOF
FAI	FRESH AIR INTAKE
FD	FLOOR DRAIN
PRV	PRESSURE REDUCING VALVE
⊕	PART PLAN, DETAIL, SECTION NUMBER
⊕	DRAWING NUMBER
⊕	SECTION IDENTIFICATION

**PLUMBING FIXTURE SCHEDULE**

MARK	DESCRIPTION	BRANCH SIZE			
		B	V	H	C
A	COUNTERTOP STAINLESS STEEL SINK (HANDICAPPED)	1 1/2"	1-1/2"	1/2"	1/2"
B	EYE WASH	-	-	3/4"	3/4"
R	EXISTING FIXTURE/TOILET ROOM TO REMAIN				
X	EXISTING FIXTURE/TOILET ROOM TO BE REMOVED				

**REMOVAL NOTES**

- 1 REMOVE ALL PLUMBING FIXTURES, EQUIPMENT, SPECIALTIES, DRAINS, CONTROLS, HANGERS, BASES, SUPPORTS, PIPING, VALVES, TUBING AND PLUMBING ACCESSORIES THAT ARE NOT INCORPORATED IN THE NEW LAYOUT.
- 2 WHERE REMOVAL IS INDICATED OR IMPLIED OR NOT INCORPORATED IN THE NEW LAYOUT, THE ITEM ITSELF IS TO BE REMOVED COMPLETELY TOGETHER WITH ALL CONNECTING PIPING, SPECIALTIES, SUPPORTS, CONTROLS, ETC. CONNECTING PIPING IS TO BE REMOVED BACK TO MAINS WHERE THE ARE TO BE CAPPED OR DISCONNECTED. THIS INCLUDES ALL GAS, SANITARY, VENT, WATER, ACID WASTE AND PUMP DISCHARGE PIPING. REFER TO DIVISION 1 OF SPECIFICATION FOR CUTTING AND PATCHING REQUIREMENTS.
- 3 WHERE EXISTING PIPING ENTERS INACCESSIBLE TRENCHES, TUNNELS, SHAFTS, WALLS AND CEILINGS INSIDE THE EXISTING BUILDING, IT SHALL BE CUT BACK AT LEAST 2" INTO SUCH INACCESSIBLE SPACES AND SHALL BE SUITABLY CAPPED AND SEALED BY THE CONTRACTOR.
- 4 THE CONTRACTOR SHALL EXERCISE NORMAL CAUTION TO PREVENT UNNECESSARY CUTTING AND DAMAGE TO THE EXISTING BUILDING. ANY EXCESSIVE DAMAGE AS DETERMINED BY THE OWNER SHALL BE REPAIRED AND PAID FOR BY THE CONTRACTOR CAUSING THE DAMAGE.
- 5 ALL DEMOLISHED EQUIPMENT ETC. EXCEPT THOSE ITEMS SPECIFICALLY REQUESTED BY THE OWNER SHALL BECOME THE CONTRACTORS PROPERTY, SHALL BE REMOVED FROM THE PREMISES, AND DISPOSED OF LEGALLY.

**SPRINKLER GENERAL NOTES**

- 1 CONTRACTOR SHALL NOT CUT ANY STRUCTURAL MEMBERS WITHOUT APPROVAL BY THE ARCHITECT. COORDINATE WITH OTHER PLUMBING AND DUCTWORK.
- 2 CONTRACTOR SHALL FURNISH AND INSTALL ALL PIPING VALVES, HEADS, TESTS, HANGERS, FITTINGS AND MISCELLANEOUS COMPONENTS TO RENDER THE SPRINKLER SYSTEM COMPLETE, OPERABLE AND IN ACCORDANCE WITH APPLICABLE CODES AND GENERALLY ACCEPTED INDUSTRY STANDARDS.

**FIRE PROTECTION DESIGN SUMMARY (WET SYSTEM)**

OCCUPANCY CLASSIFICATION: (NFPA 13)

ALL AREAS (EXCEPT AS NOTED BELOW): LIGHT HAZARD

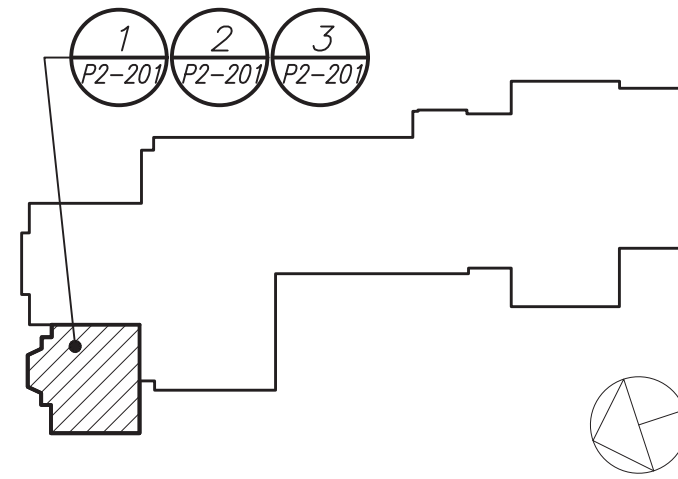
MISCELLANEOUS STORAGE: ORDINARY HAZARD GROUP 1

**SPRINKLER SYSTEM TESTS**

1. HYDROSTATIC - 200 PSI FOR 2 HOURS WITHOUT LOSS OF PRESSURE.
2. SYSTEM OPERATIONAL TESTS - WATER FLOW DETECTING DEVICES.
3. CONTRACTOR SHALL PERFORM ALL SPRINKLER SYSTEM TESTS REQUIRED BY LOCAL FIRE INSPECTOR OR AUTHORITY HAVING JURISDICTION.
4. ALL TESTS SHALL BE WITNESSED BY LOCAL FIRE INSPECTOR OR AUTHORITY HAVING JURISDICTION. SUBMIT REPORT ON ALL TESTS TO LOCAL FIRE INSPECTOR AND ENGINEER FOR APPROVAL.

**Revision Schedule**

No.	Description	Date
1	SED Submission	09/15/2020
2	SED Submission Addendum#1	01/08/2021
3	ISSUED FOR BID	01/19/2021



**Geddis  
Architects**

Architecture. Planning. Interiors

71 Old Post Road  
P.O. Box 1020  
Southport, CT 06890  
(203) 256-8700



**Fielding  
International**

Transforming Education by Design

259 Water Street Suite 1L  
Warren , RI 02885 USA  
+1 401-289-2789



BARILE GALLAGHER & ASSOCIATES

**CONSULTING ENGINEERS**

39 MARBLE AVE. PLEASANTVILLE, NY 10570  
914.328.0060 GENERAL@BGA-ENG.com www.BGA-ENG.com

**Construction Manager**

SAVIN ENGINEERS, P.C.

3 Campus Drive  
Pleasantville, NY 10570  
914-769-3200

**Structural Engineer**

ODEH ENGINEERS

1223 Mineral Spring Ave  
North Providence, RI 02904  
401-724-1771

**Civil Engineer**

WESTON & SAMPPSON

1 Winners Circle, Suite 130  
Albany, NY 12205  
518-463-4400

**Acoustic Consultant**

DP DESIGN

12 Cold Spring Street  
Providence, RI  
401-861-3218

SED#: 6618-0001-0002-015

**PROJECT**

Rye City Schools

555 Theodore Fremd Ave, Suite B-101

Milton Elementary School

12 Hewlett St, Rye, NY 10580

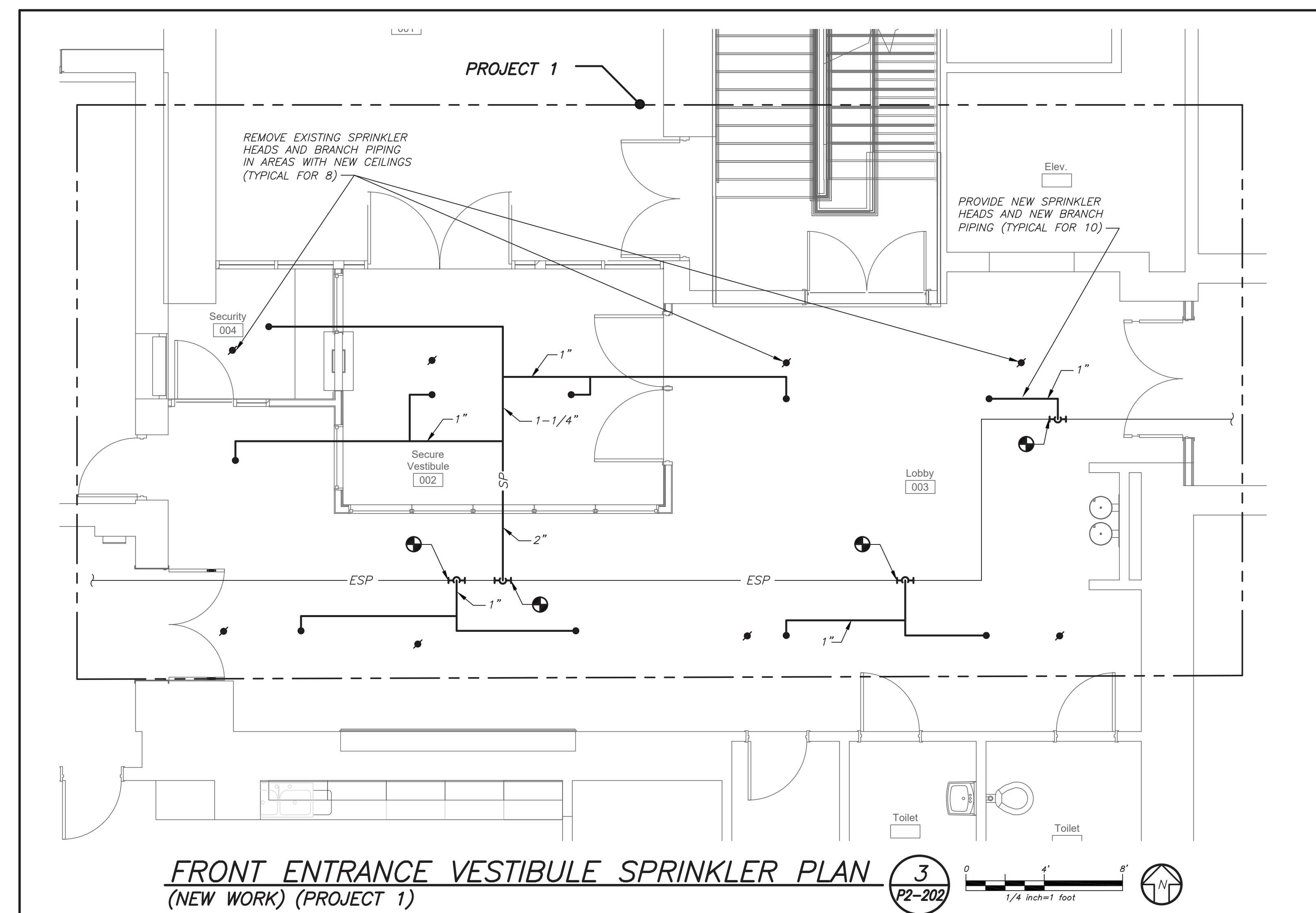
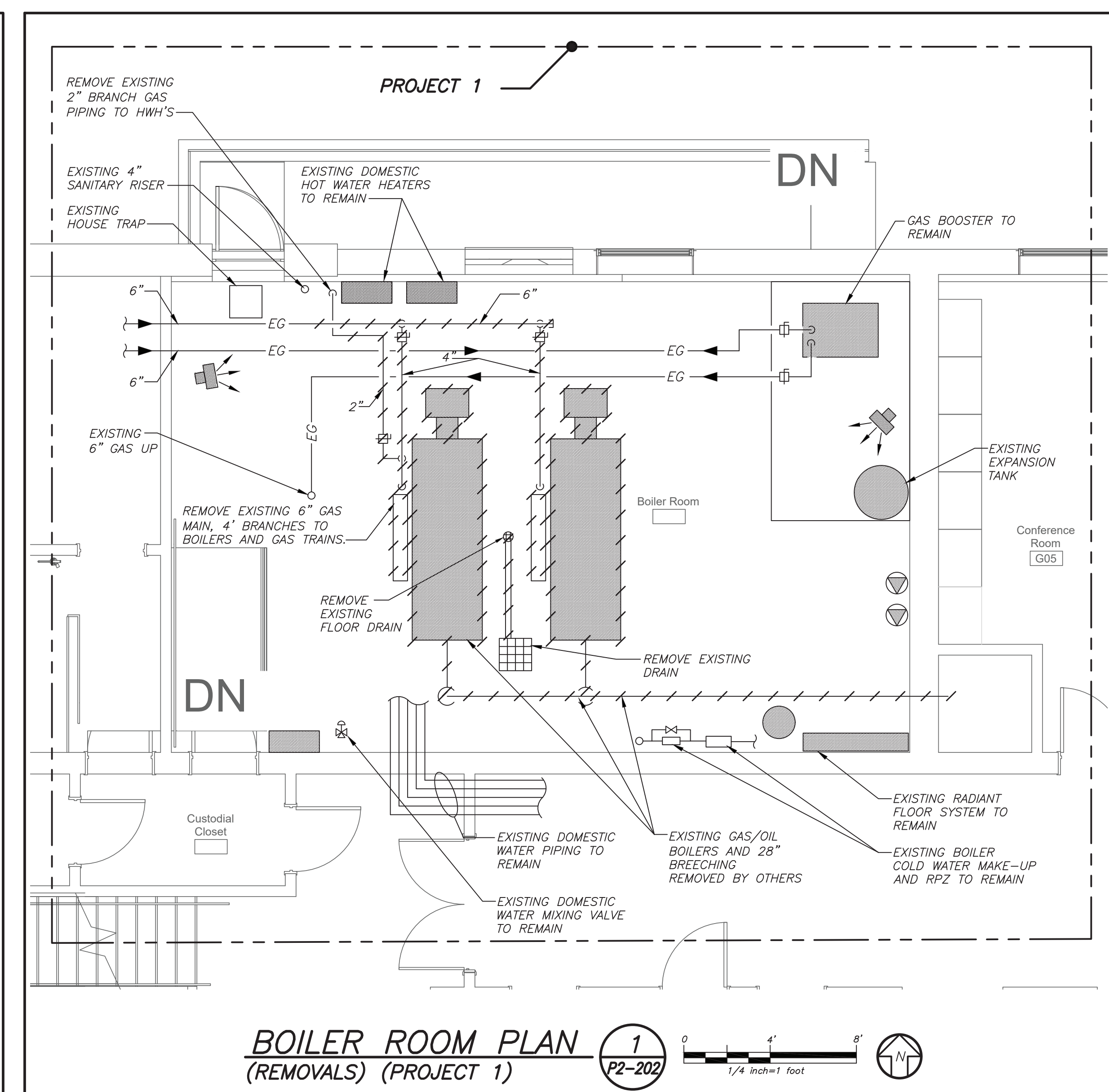
**LEGEND, SCHEDULES,  
NOTES AND  
PART FIRST  
FLOOR PLANS**

**PROJECT 2**

**SEAL & SIGNATURE**

DATE: 02/11/20  
PROJECT No: 9200  
DRAWING BY: BGA  
CHK BY: BGA  
DWG No: P2-201





**Fielding  
International**

Transforming Education by Design

259 Water Street Suite 1L  
Warren , RI 02885 USA  
+1 401-289-2789

Construction Manager  
SAVIN ENGINEERS, P.C.  
3 Campus Drive  
Pleasantville, NY 10570  
914-769-3200

Structural Engineer  
ODEH ENGINEERS  
1223 Mineral Spring Ave  
North Providence, RI 02904  
401-724-1771

Civil Engineer  
WESTON & SAMPSON  
1 Winners Circle, Suite 130  
Albany, NY 12205  
518-463-4400

Acoustic Consultant  
DP DESIGN  
12 Cold Spring Street  
Providence, RI  
401-861-3218

SED#: 6618-0001-0002-015

---

PROJECT

Rye City Schools

555 Theodore Fremd Ave, Suite B-101

Milton Elementary School

12 Hewlett St, Rye, NY 10580

BOILER ROOM AND LOBBY  
PLANS  
PROJECT 1

SEAL & SIGNATURE	DATE:	02/11/20
	PROJECT No:	9200
	DRAWING BY:	BGA
	CHK BY:	BGA
	DWG No:	P2-202

DBE: TAB: Layout1 - Y:\RYE CITY SD\Rye CSD - 2019 Bond - Phase 2 (1937.00)\Drawings\Plumbing\193700P-202-MES.dwg - DATE: Jan 15, 2021 - 2:17pm