

BEFORE FABRICATION THIS CONTRACTOR SHALL VERIFY ALL MEASUREMENTS AND CONDITIONS ON JOB AND COORDINATE HIS WORK WITH THE WORK OF ALL OTHER CONTRACTORS

SCHEDULE OF ENERGY RECOVER UNITS																															
GENERAL DATA				SUPPLY FAN DATA				EXHAUST FAN DATA				GAS HEATING DATA				COOLING DATA				COMPRESSOR DATA		ENERGY RECOVERY DATA		FILTER DATA		PHYSICAL DATA		ELECTRICAL DATA			REMARKS
MARK	SERVICE	MODEL NUMBER	OAI CFM	CFM	E.S.P. (\"WC)	FAN RPM	MOTOR HP	CFM	E.S.P. (\"WC)	FAN RPM	MOTOR HP	INPUT BTU/HR	OUTPUT BTU/HR	ENT. AIR TEMP. D.B. / W.B.	LVG. AIR TEMP. D.B. / W.B.	TOTAL CAP. BTU/HR	SENSIBLE CAP. BTU/HR	ENT. AIR TEMP. D.B. / W.B.	LVG. AIR TEMP. D.B. / W.B.	TONNAGE	COMP. QTY	WINTER AIR TMP. ENT. / LVG.	SUMMER AIR TMP. ENT. / LVG.	SIZE (IN.)	TYPE	WEIGHT (LBS.)	LxWxH (IN.)	MCA	MOP	SERVICE	
EBL1	ADDITION	ERP-E-03-EP-C-HR-HG-AST25	3,500	3,500	2.0	4730	7.7	3,500	2.0	2740	4.40	280,000	225,000	52	110	209,000	113,000	81/71	52/52	17.5	2	13/52	95/81	2\"/4"	MERV 10/ MERV 13	4,600	284x78x84	67	80	460/3/60	REFER TO 0000
EBL2	ADDITION BATHROOMS	U-ERV-COIL-600LL	200	200	1.1	-	-	200	1.1	-	-	N/A	N/A	N/A	N/A	17,000	6,200	80/67	57/55	N/A	N/A	10/58	94/80	2"	MERV 13	100	56x34x12	10.6	15	208/1/60	0000
NOTES	1 AS MANUFACTURED BY "ANNEXAIR".																														
	2 AS MANUFACTURED BY "ENERGY WALL".																														
	3 INSTALL IN ACCORDANCE WITH MANUFACTURER'S DIRECTIONS.																														
	4 BASED ON A.R.I. CERTIFIED COIL SELECTIONS; REFRIGERANT R-410A.																														
5 PACKAGED UNIT WITH INTEGRAL FURNACE, CONDENSING AND ENERGY RECOVERY WHEEL SECTION. PROVIDE UNIT WITH V.F.D., HOT GAS BYPASS, STATIC PRESSURE CONTROLLER, VIBRATION ISOLATORS, DIFFERENTIAL ENTHALPY ECONOMIZER CONTROLS, POWERED CONVENIENCE OUTLET, LOW AMBIENT CONTROL, PHASE PROTECTION AND NON-FUSED DISCONNECT SWITCH. PROVIDE 14" HIGH ROOF CURB.												6 CEILING MOUNTED UNIT WITH INTEGRAL DX COIL AND ASSOCIATED OUTDOOR CONDENSING UNIT CU-2. PROVIDE LG. EVV KIT AND AHU COMMUNICATIONS KIT. PROVIDE UNIT WITH ENAMELED FINISH (COLOR TO BE DETERMINED BY ARCHITECT). EXHAUST/DEFROST CONTROLS WITH INSULATED MOTORIZED OA/EXHAUST DAMPERS, DAMPER POWER TERMINALS, LOW TEMPERATURE LIMIT CONTROLS, DIFFERENTIAL ENTHALPY ECONOMIZER CONTROLS, DIRTY FILTER CONTACT, DAMPER END SWITCHES, DISCONNECT SWITCHES, MERV 11 FILTERS, DX COIL, DX COIL SHALL PROVIDE BOTH HEATING AND COOLING THE VENTILATION AIR AND HAVE STAINLESS STEEL DRAIN PAN.																			

SCHEDULE OF MINIMUM VENTILATION ROOM FLOW RATES											
ROOM NAME/NUMBER	OCCUPANCY CATEGORY	A ROOM AREA (SQ.FT.)	B PEOPLE DENSITY (#/1000 SQ.FT.) / # OF FIXTURES	C PEOPLE OUTDOOR AIR FLOW RATE (CFM/PERSON)	D AREA OUTDOOR AIR FLOW RATE IN BREATHING ZONE (CFM/SQ.FT.)	E EXHAUST AIR FLOW RATE (CFM/SQ.FT.)	F NUMBER OF PEOPLE (A+B)*1000/#P	G OUTDOOR AIR FLOW RATE WITHOUT ZONE EFFECTIVENESS FACTOR (F*G)=(A+D)*CFM	H ZONE AIR DISTRIBUTION EFFECTIVENESS FACTOR	I MINIMUM ROOM VENTILATION AIR FLOW RATE G+H*CFM	J MINIMUM EXHAUST AIR FLOW RATE A+E*CFM
5th Grade Learning Studio101	CLASSROOM (AGES 9+)	600	35	10	0.12	0	21	282	0.8	353	0
Active Commons/100	CLASSROOM (AGES 9+)	650	35	10	0.12	0	23	308	0.8	385	0
Workshop Commons/101	CLASSROOM (AGES 9+)	900	35	10	0.12	0	32	428	0.8	535	0
5th Grade Learning Studio102	CLASSROOM (AGES 9+)	750	35	10	0.12	0	27	360	0.8	450	0
5th Grade Learning Studio103	CLASSROOM (AGES 9+)	750	35	10	0.12	0	27	360	0.8	450	0
SGR/104	CLASSROOM (AGES 9+)	100	35	10	0.12	0	4	52	0.8	65	0
5th Grade Learning Studio105	CLASSROOM (AGES 9+)	750	35	10	0.12	0	27	360	0.8	450	0
SGR/106	CLASSROOM (AGES 9+)	100	35	10	0.12	0	4	52	0.8	65	0
5th Grade Learning Studio107	CLASSROOM (AGES 9+)	750	35	10	0.12	0	27	360	0.8	450	0
Conference/108	CONFERENCE/MEETING	175	50	5	0.06	0	9	56	0.8	69	0
WC/109	TOILETS - PUBLIC	40	1 FIXTURES	-	-	50 CFM/ FIXTURE	-	-	-	-	50
WC/110	TOILETS - PUBLIC	40	1 FIXTURES	-	-	50 CFM/ FIXTURE	-	-	-	-	50

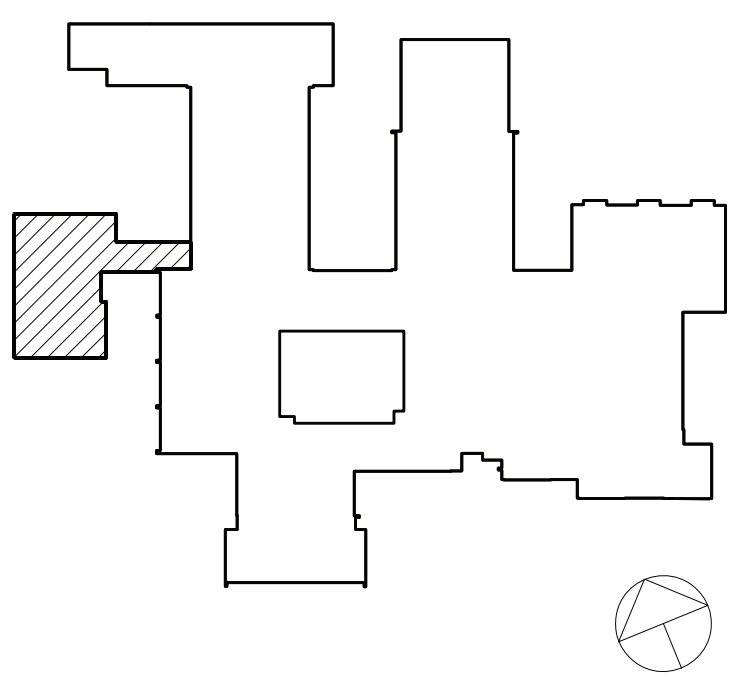
SCHEDULE OF VRF OUTDOOR HEAT PUMP UNITS														
MARK	LOCATION	SERVICE	MODEL N ^o ①	COOLING CAPACITY (MBH)	HEATING CAPACITY (MBH)	COMPRESS. DATA		COND. DATA		ELECTRICAL DATA		PHYSICAL DATA DIMENSION/WEIGHT (L X W X H) / (LBS)	REMARKS	
						TYPE	QTY	QTY		MCA	MOP			
HP-1	ROOFTOP	ADDITION	ARUM336DTE5	336	378	SCROLL	3	4		18.4/38.3	25/50	460/3/60	98x30x67/1400	REFER TO ②③④⑤
HP-2	ROOFTOP		ARUN024GSS4	24	27	DC		1		19.6	30	208/1/60	38x13x33/175	REFER TO ②③④⑤
NOTES	① AS MANUFACTURED BY "LG."													
	② INSTALL PER MANUFACTURER'S RECOMMENDATIONS.													
	③ BASED ON A.R.I. CERTIFIED COIL SELECTIONS; REFRIGERANT R-410A, EER 12.4/SEER 25.9/HSPF10.3.													
	④ DESIGN AIR CONDITIONS: SUMMER: OA (94°F/75°F) RA (77°F/65°F); WINTER: OA (51°F/37°F) RA (70°F/55°F), HW: 180°F/160°F													
	⑤ MOUNT ON RAILS, THREE PIPE SYSTEM, PROVIDE VIBRATION ISOLATORS, EQUIPMENT SUPPORTS, DISCONNECT SWITCH, CONVENIENCE OUTLET, LOW AMBIENT CONTROLS AND PHASE PROTECTION. DC INVERTER COMPRESSOR SPEED CONTROL BASED ON SYSTEM LOAD.													
	⑥ MOUNT ON RAILS, TWO PIPE SYSTEM, PROVIDE VIBRATION ISOLATORS, EQUIPMENT SUPPORTS, CONVENIENCE OUTLET, LOW AMBIENT CONTROLS, AND DISCONNECT SWITCH. DC INVERTER COMPRESSOR SPEED CONTROL BASED ON SYSTEM LOAD.													

SCHEDULE OF VRF INDOOR UNITS												
MARK	MODEL No. ①	SUPPLY FAN DATA				TOTAL COOL/HEAT MBH	DIMENSION/WEIGHT				REMARKS	
		CFM HIGH	MCA	MOC	ELECTRIC SERVICE		W (IN.)	D (IN.)	H (IN.)	LBS		
AIL1	ARNU073TRD4	265	0.25	15	208/1/60	7.5/8.5	25	25	10	35	REFER TO ②③④⑤	
AIL2	ARNU153TDQ4	388				15.4/17.1	25	25	12	40		
AIL3	ARNU183TDQ4	396				19.1/21.5	25	25	12	40		
AIL4	ARNU303SVA4	812	0.65			30.0/32.0	47	11	14	50		
AIL5	PRHR033A	N/A	0.17			N/A	31	26	9	37	REFER TO ②③	
AIL6	PRHR033A		0.17				31	26	9	37		
AIL7	PRHR063A		0.27				31	26	9	40		
NOTES												
① AS MANUFACTURED BY "LG."												
② INSTALL PER MANUFACTURER'S RECOMMENDATIONS.												
③ BASED ON A.R.I. CERTIFIED COIL SELECTIONS; REFRIGERANT R-410A												
④ PROVIDE CHECK VALVE, ANTI SWEAT SLEEVE AND AUTO SHUTDOWN OVERFLOW SWITCH												
⑤ PROVIDE MOUNTING HARDWARE, VIBRATION ISOLATORS, DISCONNECT AND HARDWIRED REMOTE WALL MOUNTED CONTROLLER/THERMOSTAT. WHERE MULTIPLE UNITS TIE INTO ONE ZONE CONTROLLER PROVIDE WIRED REMOTE GROUP CONTROL CABLE ASSEMBLY PCWRC1 AS REQUIRED. TIE INTO BMS.												

SCHEDULE OF REGISTERS AND DIFFUSERS																		
MARK	TYPE	SERVICE	MODEL No. ①	NOMINAL FACE SIZE	DIRECTION DISCHARGE	FINISH	REMARKS											
(A)	CEILING DIFFUSER	SUPPLY	SCD	12X12/24X24	FOUR-WAY	PER ARCH.	REFER TO ②③④⑤⑥⑧											
(B)	CEILING RETURN REGISTER	RETURN/EXHAUST	635	VARIES	—	PER ARCH.	REFER TO ②③④⑤⑥⑧											
(C)	LINEAR	SUPPLY	SDS-50 2-SLOT	48"	TWO-WAY	PER ARCH.	REFER TO ②③④⑤⑥⑦⑧											
NOTES	① AS MANUFACTURED BY "PRICE".																	
	② INSTALL PER MANUFACTURERS RECOMMENDATIONS.																	
	③ OPPOSED BLADE DAMPER, DOUBLE DEFLECTION, 1/2" BLADE SPACING.																	
	④ PROVIDE CABLE OPERATED DAMPERS IN UN-ACCESSIBLE AREAS.																	
	⑤ AIR OUTLET TO BE OF STEEL CONSTRUCTION.																	
	⑥ COORDINATE AIR OUTLET TYPE WITH CEILING CONSTRUCTION.																	
⑦ PROVIDE INSULATED PLENUM.																		
				⑧ SUPPLY NECK SIZE PER CFM RANGE (NOT TO EXCEED 700 fpm)		⑨ RETURN NECK SIZE PER CFM RANGE (NOT TO EXCEED 675 fpm)												
				50	100	246	381	551	751	50	150	250	400	600	800	1100	1200	
				70	10	10	10	75	10	70	10	10	10	70	10	10	10	10
				135	245	380	550	750	860	149	249	399	599	799	1099	1199	2399	
				6" 8"	10" 10"	12" 14"	14" 15"	15"	6x6	6x8	10X10	12X12	14X14	16X16	18X18	24X24	24X24	

SCHEDULE OF EXHAUST FANS												
MARK	SERVICE	LOCATION	TYPE	MODEL NO. ①	CFM	EXT. S.P. IN. H ₂ O	RPM	HP	ELECTRIC SERVICE	SIZE	WEIGHT (LBS.)	REMARKS
EF-1	JC-37A	ROOFTOP	CENTRIFUGAL	G-06-VG	100	0.35	1725	1/15	120/1/60	19"φ	25	REFER TO ②③
NOTES	① AS MANUFACTURED BY "GREENHECK."											
	② INSTALL PER MANUFACTURER'S RECOMMENDATIONS.											
	③ PROVIDE DISCONNECT SWITCH, BACKDRAFT DAMPER, VIBRATION ISOLATORS, SPEED CONTROL, ROOF CURB AND NAMEPLATE IDENTIFYING FAN MARK, MODEL NO., CFM, RPM, HP, AND ELECTRICAL SERVICE.											

Revision Schedule		
No.	Description	Date
A	SED Submission	10/23/2020
B	ISSUED FOR BID	8/10/2021



Geddis Architects

Architecture. Planning. Interiors

71 Old Post Road
P.O. Box 1020
Southport, CT 06890
(203) 256-8700

Fielding International

Transforming Education by Design

259 Water Street Suite 1L
Warren , RI 02885 USA
+1 401-289-2789

bga

BARILE GALLAGHER & ASSOCIATES

CONSULTING ENGINEERS
39 MARBLE AVE. PLEASANTVILLE, NY 10570
914.328.9268 GENERAL@BGA-ENG.COM www.BGA-ENG.COM

Construction Manager
SAVIN ENGINEERS, P.C.
3 Campus Drive
Pleasantville, NY 10570
914-769-3200

Structural Engineer
ODEH ENGINEERS
1223 Mineral Spring Ave
North Providence, RI 02904
401-724-1771

Civil Engineer
WESTON & SAMPSON
1 Winners Circle, Suite 130
Albany, NY 12205
518-463-4400

Acoustic Consultant
DP DESIGN
12 Cold Spring Street
Providence, RI
401-861-3218

AV Consultant
CAVANAUGH TOCCI
327 F Boston Post Road
Sudbury, MA 01776-3027
978-443-7871

SED#: 6618-0001-0001-023

PROJECT

Rye City Schools
555 Theodore Fremd Ave, Suite B-101
Osborn Elementary School
10 Osborn Road, Rye NY 10580

SCHEDULES

SEAL & SIGNATURE DATE: 02/12/20
PROJECT No: 9200
DRAWING BY: BGA
CHK BY: BGA
DWG No: H3-301