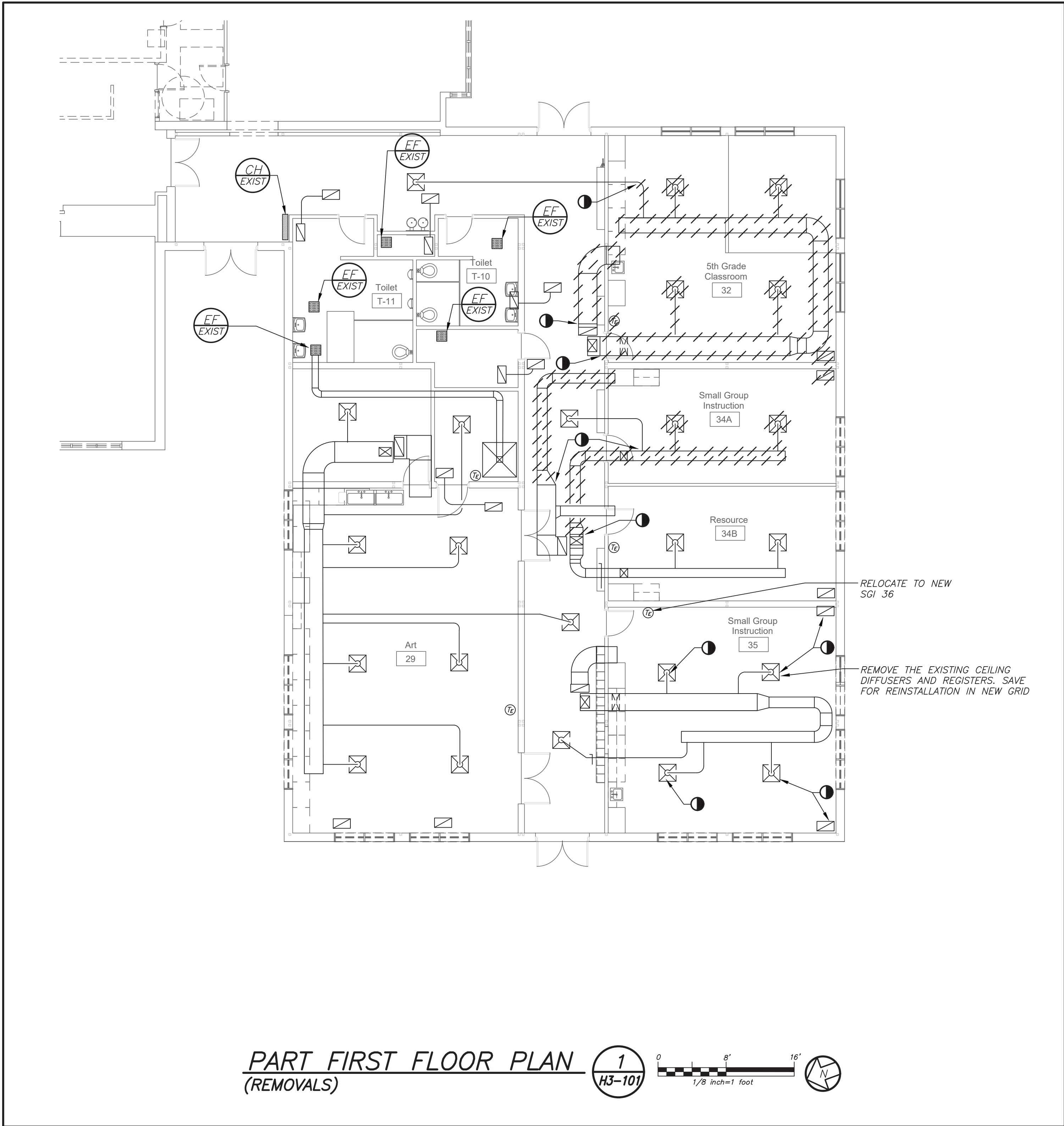


BEFORE FABRICATION THIS CONTRACTOR SHALL VERIFY ALL MEASUREMENTS AND CONDITIONS ON JOB AND COORDINATE HIS WORK WITH THE WORK OF ALL OTHER CONTRACTORS



PART FIRST FLOOR PLAN
(REMOVALS)

LEGEND		
-----	EXISTING PIPING, EQUIPMENT, ETC. TO BE REMOVED	
-----	EXISTING PIPING, EQUIPMENT, ETC.	
-----	NEW PIPING, EQUIPMENT, ETC.	
-----	POINT OF CHANGE IN DUCT SIZE NEW DUCTWORK 1" TYPICAL ACoustic LINING-DUCT SIZES ON PLANS ARE CLEAR INSIDE DIMENSIONS	
-----	FLEXIBLE CONNECTION NEW DUCTWORK POINT OF CHANGE IN DUCT SIZE	
-----	SQUARE DUCT TURN WITH TURNING VANES	
-----	TYPE -SEE SCHEDULE NEW 4-WAY CEILING DIFFUSER	
-----	TYPE -SEE SCHEDULE NEW 3-WAY CEILING DIFFUSER	
-----	TYPE -SEE SCHEDULE NEW 2-WAY CEILING DIFFUSER	
-----	TYPE -SEE SCHEDULE CEILING EXHAUST/RETURN REGISTER	
-----	TYPE -SEE SCHEDULE REGISTER/DIFFUSER IDENTIFICATION	
-----	DUCT DROP; DUCT RISE	
-----	DUCT MTD. MANUAL AIR VOLUME DAMPER (W/LOCKING DEVICE)	
-----	MOTORIZED AIR VOLUME DAMPER (W/ACCESS DOOR)	
-----	FIRE DAMPER (U.L. APPROVED) & ACCESS DOOR	
-----	HOT WATER HEATING SUPPLY PIPING	
-----	HOT WATER HEATING RETURN PIPING	
-----	LIQUID REFRIGERANT PIPING	
-----	SUCTION REFRIGERANT PIPING	
-----	HOT GAS REFRIGERANT PIPING	
-----	CONDENSATE DRAIN PIPING	
-----	FLOW DIRECTION WITHIN PIPE CONNECTION TO EQUIPMENT ABOVE	
-----	GATE VALVE (HORIZONTAL/VERTICAL)	
-----	COMBINATION BALANCING & SHUT-OFF VALVE (CIRCUIT SETTER)	
-----	2 - WAY CONTROL VALVE	
-----	CHECK VALVES	
-----	PIPE CONNS. (BOTTOM; TOP 45 OR 90; PIPE UP)	
-----	CLEAN OUT	
-----	EXPANSION JOINT, ANCHOR AND GUIDES	
-----	EXISTING EXHAUST FAN IDENTIFICATION	
-----	EXISTING PACKAGED ROOFTOP UNIT IDENTIFICATION	
-----	EXHAUST FAN IDENTIFICATION	
-----	DEDICATED OUTDOOR AIR ENERGY RECOVERY VENTILATION UNIT IDENTIFICATION	
-----	CABINET HEATER IDENTIFICATION	
-----	HOT WATER COIL IDENTIFICATION	
-----	INDOOR FAN COIL CASSETTE UNIT IDENTIFICATION	
-----	HEAT PUMP UNIT IDENTIFICATION	
-----	VRF INDOOR FLOW SELECTOR IDENTIFICATION	
-----	EXISTING WALL THERMOSTAT	
-----	TO CONTROLLED ITEM WALL MTD.(S)-2"±A.F.F.-U.O.N.) TEMPERATURE SENSOR	
-----	POINT OF DISCONNECTION	
-----	POINT OF CONNECTION, NEW TO EXISTING	
-----	CFM CUBIC FEET PER MINUTE	
-----	FSC FULL SIZE CONNECTION	
-----	AFF ABOVE FINISHED FLOOR	
-----	OA/FAI OUTSIDE (FRESH) AIR INTAKE	
-----	HVAC HEATING, VENTILATING, AIR CONDITIONING CONTRACTOR	
-----	FC FLEXIBLE CONNECTION	
-----	FSC FULL SIZE CONNECTION	
-----	AD ACCESS DOOR	
-----	FD FIRE DAMPER	
-----	FSD FIRE SMOKE DAMPER	
-----	DETAIL/PART PLAN NUMBER IDENTIFICATION: DETAIL/PART PLAN NUMBER DRAWING NUMBER	

REMOVAL NOTES	
REMOVAL NOTES:	
1	THE SCOPE OF REMOVAL SHOWN ON "REMOVALS" DRAWINGS IS DIAGRAMMATIC ONLY AND INDICATES THE INTENT OF THE WORK TO BE PERFORMED AND NOT THE COMPLETE SCOPE OF DEMOLITION AND/OR REMOVAL WORK. IT SHALL BE THE RESPONSIBILITY OF THIS CONTRACTOR TO REMOVE ANY RELATED MECHANICAL DEVICES EVEN IF NOT SPECIFICALLY INDICATED TO BE REMOVED ON THESE DRAWINGS IN ORDER TO ACCOMMODATE NEW WORK.
2	DEVICES SHOWN CROSS HATCHED ON DRAWINGS ARE ITEMS TO BE REMOVED. ANY DEVICES REMOVED SHALL INCLUDE (BUT SHALL NOT BE LIMITED TO) THE REMOVAL OF ALL ASSOCIATED PIPING, CONTROLS, ETC. THAT ARE NOT INCORPORATED IN THE NEW LAYOUT, UNTIL SUCH REMOVAL IS COMPLETE. THIS CONTRACTOR SHALL PERFORM ALL WORK REQUIRED TO INSURE CONTINUITY OF SERVICE TO EXISTING REMAINING EQUIPMENT. NO EXTRAS RELATING TO THE SCOPE OF WORK DESCRIBED WILL BE ALLOWED.
3	EQUIPMENT, PIPING, ETC., REQUIRED TO RECONNECT SHALL BE INSTALLED CONCEALED WITHIN THE NEW SUSPENDED CEILINGS, PARTITIONS AND/OR WALLS, FLOORS, NO SURFACE MOUNTED OR EXPOSED EQUIPMENT, PIPING, ETC., SHALL BE PERMITTED, UNLESS SPECIFICALLY INDICATED.
4	ALL ITEMS TO BE REMOVED SHALL BE REVIEWED WITH THE OWNER PRIOR TO REMOVAL. OWNER SHALL HAVE FIRST SALVAGE RIGHTS. ITEMS THE OWNER WISHES TO KEEP SHALL BE REMOVED WITH CARE AND STORED AS DIRECTED BY OWNER. ITEMS THE OWNER DOES NOT WISH TO KEEP SHALL BE REMOVED FROM THE SITE AND DISPOSED OF PROPERLY.
5	REMOVE OR RELOCATE ALL DEVICES LOCATED ON THE EXTERIOR OF THE BUILDING OR ON THE INTERIOR OF EXTERIOR WALLS AS REQUIRED TO ACCOMMODATE THE NEW BUILDING ADDITION OR TO ALLOW THE ADDITION OF DOORWAYS INTO THE NEW ADDITION.
6	IN ALL AREAS WHERE CEILINGS ARE NOT BEING REPLACED, REMOVE TILES AND GRID AS REQUIRED TO PERFORM WORK AND REINSTALL FOR AS-NEW CONDITION.

Revision Schedule		
No.	Description	Date
A	SED Submission	10/23/2020
B	ISSUED FOR BID	08/10/2021

Geddis Architects

Architecture. Planning. Interiors

71 Old Post Road
P.O. Box 1020
Southport, CT 06890
(203) 256-8700

Fielding International

Transforming Education by Design

259 Water Street Suite 1L
Warren, RI 02885 USA
+1 401-289-2789

bga

BARILE GALLAGHER & ASSOCIATES

CONSULTING ENGINEERS
39 MARBLE AVE. PLEASANTVILLE, NY 10570
914.328.6060 GENERAL@BGA-ENG.com www.BGA-ENG.com

Construction Manager
SAVIN ENGINEERS, P.C.
3 Campus Drive
Pleasantville, NY 10570
914-769-3200

Structural Engineer
ODEH ENGINEERS
1223 Mineral Spring Ave
North Providence, RI 02904
401-724-1771

Civil Engineer
WESTON & SAMPSON
1 Winners Circle, Suite 130
Albany, NY 12205
518-463-4400

Roof Consultant
WATSKY ASSOCIATES INC.
20 Madison Ave
Valhalla, NY 10595
914-948-3450

Acoustic Consultant
DP DESIGN
12 Cold Spring Street
Providence, RI
401-861-3218

AV Consultant
CAVANAUGH TOCCI
327 F Boston Post Road
Sudbury, MA 01778-3027
978-443-7871

SED#: 6618-0001-0003-025

PROJECT

Rye City Schools

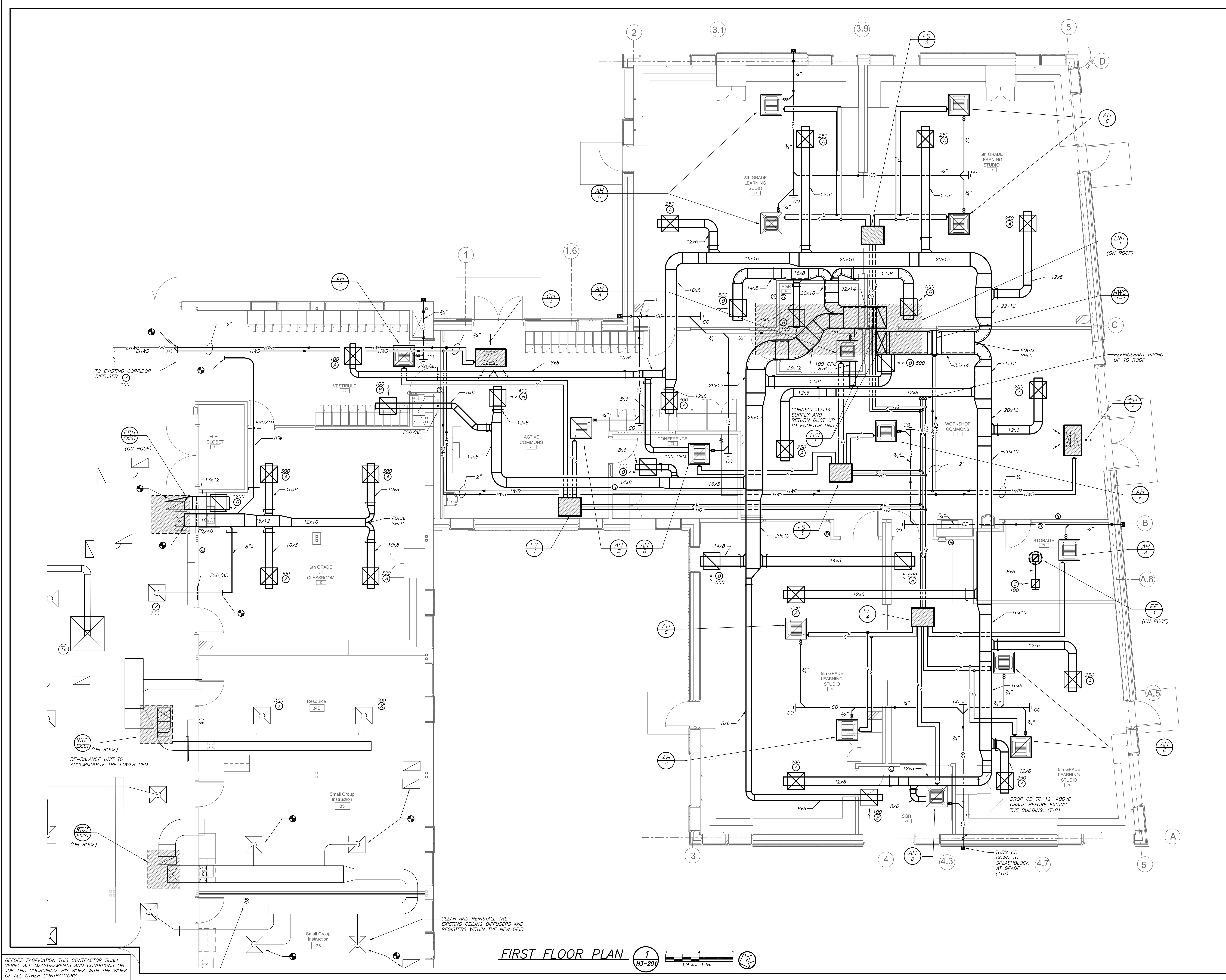
555 Theodore Fremd Ave, Rye, NY 10580

Midland Elementary School

312 Midland Ave, Rye NY 10580

LEGEND, NOTES, AND
PARTIAL FIRST FLOOR
PLAN

SEAL & SIGNATURE	DATE: 12/12/19 PROJECT No: 9200 DRAWING BY: Author CHK BY: BGA/BGA DWG No: H3-101
------------------	---



Revision Schedule		
No.	Description	Date
A	SED Submission	10/23/2020
B	ISSUED FOR BID	08/10/2021

Geddis Architects
Architecture. Planning. Interiors
71 Old Post Road
P.O. Box 1020
Southport, CT 06890
(203) 256-8700

Fielding International
Transforming Education by Design
259 Water Street Suite 1L
Warren, RI 02885 USA
+1 401-289-2789

bga
BARILE GALLAGHER & ASSOCIATES
CONSULTING ENGINEERS
39 MARBLE AVE. PLEASANTVILLE, NY 10570
914.328.6060 GENERAL@BGA-ENG.COM www.BGA-ENG.COM

Construction Manager
SAVIN ENGINEERS, P.C.
3 Campus Drive
Pleasantville, NY 10570
914-769-3200

Structural Engineer
OEH ENGINEERS
1223 Mineral Spring Ave
North Providence, RI 02904
401-724-1771

Civil Engineer
WESTON & SAMPSON
1 Winners Circle, Suite 130
Albany, NY 12205
518-463-4400

Roof Consultant
WATSKY ASSOCIATES INC.
20 Madison Ave
Valhalla, NY 10595
914-948-3450

Acoustic Consultant
DP DESIGN
12 Cold Spring Street
Providence, RI
401-861-3218

AV Consultant
CAVANAUGH TOCCI
327 F Boston Post Road
Sudbury, MA 01776-3027
978-443-7871

SED#: 6618-0001-0003-025

PROJECT
Rye City Schools
555 Theodore Fremd Ave, Rye, NY 10580
Midland Elementary School
312 Midland Ave, Rye NY 10580

ADDITION FIRST FLOOR PLAN

SEAL & SIGNATURE	DATE: 12/12/19
	PROJECT No: 9200
	DRAWING BY: Author
	CHK BY: BGA/BGA
	DWG No: H3-201

BEFORE FABRICATION THIS CONTRACTOR SHALL VERIFY ALL MEASUREMENTS AND CONDITIONS ON JOB AND COORDINATE HIS WORK WITH THE WORK OF ALL OTHER CONTRACTORS

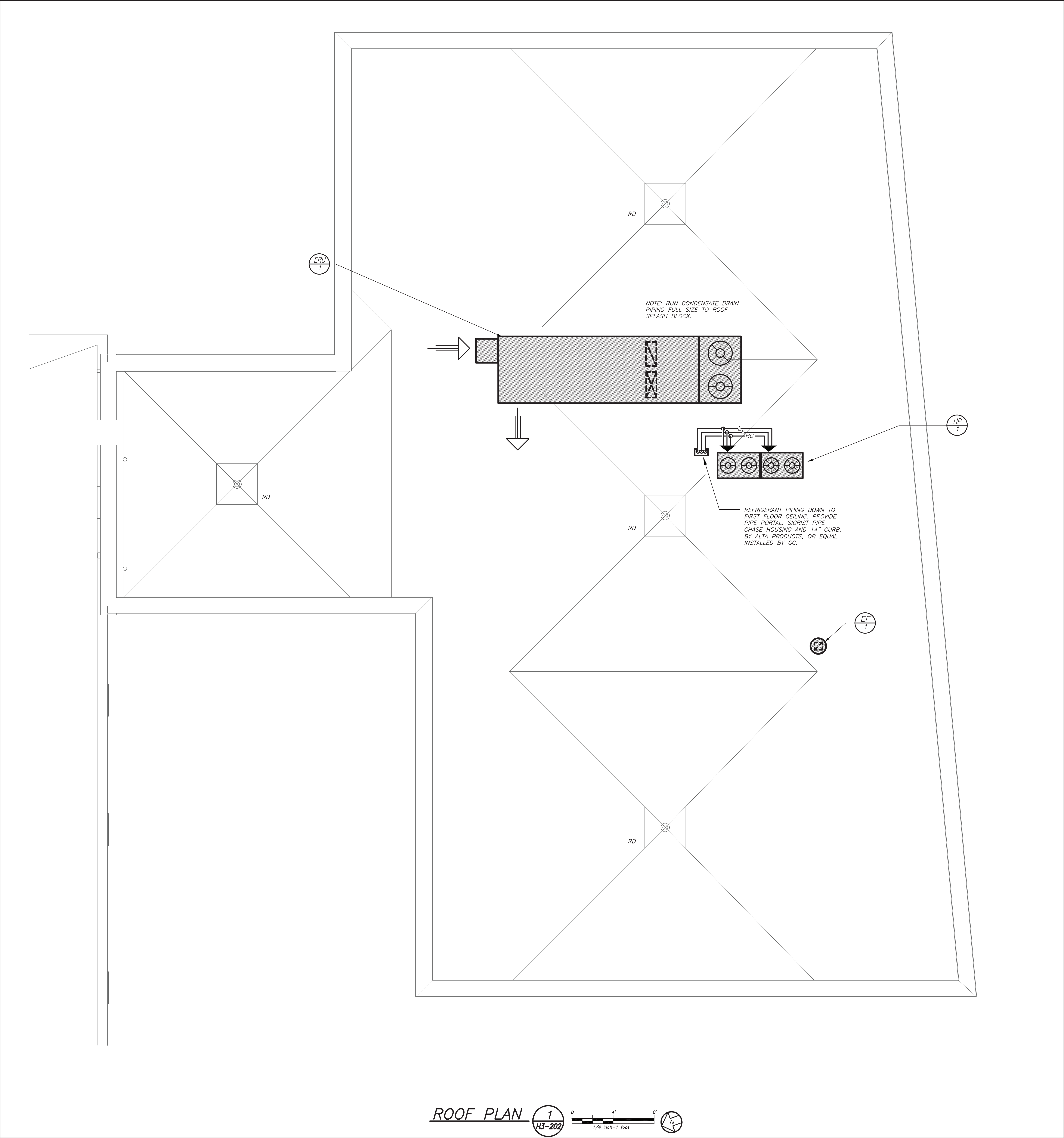
CLEAN AND REINSTALL THE EXISTING CEILING DIFFUSERS AND REGISTERS WITHIN THE NEW GRID

FIRST FLOOR PLAN

1
H3-201

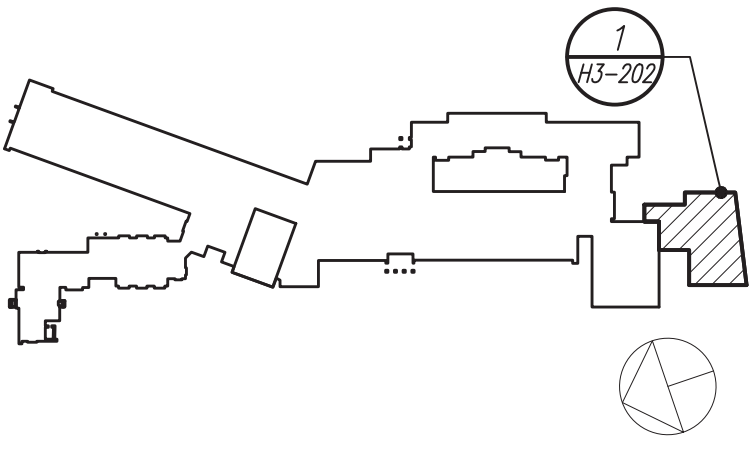
0 4' 8'
1/4" = 1' foot

DATE: Aug 06, 2021 - 2:18pm



BEFORE FABRICATION THIS CONTRACTOR SHALL VERIFY ALL MEASUREMENTS AND CONDITIONS ON JOB AND COORDINATE HIS WORK WITH THE WORK OF ALL OTHER CONTRACTORS

Revision Schedule		
No.	Description	Date
A	SED Submission	10/23/2020
B	ISSUED FOR BID	08/10/2021



Geddis Architects

Architecture. Planning. Interiors

71 Old Post Road
P.O. Box 1020
Southport, CT 06890
(203) 256-8700

Fielding International

Transforming Education by Design

259 Water Street Suite 1L
Warren, RI 02885 USA
+1 401-289-2789

bga

BARILE GALLAGHER & ASSOCIATES

CONSULTING ENGINEERS
39 MARBLE AVE. PLEASANTVILLE, NY 10570
914.328.6060 GENERAL@BGA-ENG.com www.BGA-ENG.com

Construction Manager
SAVIN ENGINEERS, P.C.
3 Campus Drive
Pleasantville, NY 10570
914-769-3200

Structural Engineer
ODEH ENGINEERS
1223 Mineral Spring Ave
North Providence, RI 02904
401-724-1771

Civil Engineer
WESTON & SAMPSON
1 Winners Circle, Suite 130
Albany, NY 12205
518-463-4400

Roof Consultant
WATSKY ASSOCIATES INC.
20 Madison Ave
Valhalla, NY 10595
914-948-3450

Acoustic Consultant
DP DESIGN
12 Cold Spring Street
Providence, RI
401-861-3218

AV Consultant
CAVANAUGH TOCCI
327 F Boston Post Road
Sudbury, MA 01778-3027
978-443-7871

SED#: 6618-0001-0003-025

PROJECT

Rye City Schools
555 Theodore Fremd Ave, Rye, NY 10580

Midland Elementary School
312 Midland Ave, Rye NY 10580

ADDITION ROOF PLAN

SEAL & SIGNATURE | DATE: 12/12/19
PROJECT No: 9200
DRAWING BY: Author
CHK BY: BGA/BGA
DWG No: H3-202

SCHEDULE OF PACKAGED DEDICATED OUTDOOR HEAT PUMP VENTILATION AIR UNITS (WITH HEAT RECOVERY)																																							
MARK	SERVICE	LOCATION	MODEL No.	AIRFLOW CONDITIONS					SUPPLY FAN			EXHAUST FAN			HEAT EXCHANGER					DX COOLING COIL DATA					HEATING COIL DATA				FILTERS	ELECTRICAL DATA				DIMENSIONS (BASE)			WEIGHT LBS	EER	REMARKS
				O.A. CFM	E.A. CFM	R.A. CFM	SAESP IN. WC	RAESP IN. WC	TYPE	CFM	HP	TYPE	CFM	HP	SUMMER L.A.T. DB °F WB °F	WINTER L.A.T. DB °F WB °F	E.A.T. °F DB °F WB °F	L.A.T. °F DB °F WB °F	SENSIBLE MBH	TOTAL MBH	MARK	INTAKE RETURN	V/PH	MCA	MOCF	L	W	H											
① ② ③ ④	NEW ADDITION	ROOF	ERP-E-03-EP-C-HR-SS-AST25	3200	3200	3200	1.25	1.00	CENTR.	3200	7.0	CENTR.	3200	5.0	81	71.5	52.7	41.5	82.9	68.3	58.4	57.8	99.0	162.0	① ②	REFER TO SCHEDULE OF DUCT MOUNTED HOT WATER COILS				MERV 13	480/3/60	69.0	80.0	284	78	84	2200	13.5	REFER TO ②③④⑤⑥⑦⑧⑨⑩

NOTES

①

AS MANUFACTURED BY "ANNEXAIR.". (KLIMA, NEW YORK LLC 212 678-5100)

②

WINTER L.A.T. IS BASED ON FROST CONTROL BY VFD.

③

DESIGN AIR CONDITION: SUMMER O.A. (95°F/75°F) R.A. (75°F/63°F); WINTER O.A. (0°F/0°F) R.A. (70°F/53°F).

④

INSTALL PER MANUFACTURER'S RECOMMENDATIONS.

⑤

PROVIDE ROOFTOP UNIT WITH STAGED COOLING, ENAMELED FINISH (COLOR TO BE DETERMINED BY ARCHITECT), MOTORIZED CONTROL DAMPERS, DAMPER END SWITCHES, 100% ENTHALPY ECONOMIZER CONTROLS, FROST PROTECTION, HOT GAS BY-PASS, ENERGY RECOVERY HEAT EXCHANGER, DIRTY FILTER CONTACTS, BLOWER SHAVE AND BELT FOR SELECTED STATIC USE, DISCONNECT SWITCH, VFD'S, PHASE MONITOR, 4" THICK MERV 13 PLEATED FILTERS (AS NOTED), STAINLESS STEEL DRAIN PAN, HINGED ACCESS PANELS, BACNET COMPARABLE AUTOMATED CONTROLS (AS NOTED), POWERED 120 VOLT GFI SERVICE RECEPTACLE. PROVIDE FIELD INSTALLED FULL ECONOMIZER/POWER EXHAUST, INTAKE AND EXHAUST HOODS AND DUAL ENTHALPY HUMIDITY SENSORS. THIS UNIT IS A 100 PERCENT OUTDOOR AIR/EXHAUST VENTILATION UNIT.

⑥

DESIGN AIR CONDITIONS: SUMMER O.A. (95°F/75°F)
RA (75°F/63°F)

WINTER O.A. (0°F/0°F)
RA (70°F/53°F)

⑦

PROVIDE UNIT WITH VARIABLE FREQUENCY DRIVES.

⑧

UNIT EQUIPPED WITH DX COOLING AND CONDENSING UNIT SECTION.

⑨

REFER TO SCHEDULE OF DUCT MOUNTED HEATING COILS FOR COIL DATA.

⑩

COORDINATE HVAC EQUIPMENT FAN SHUT DOWN BY FIRE ALARM PANEL WITH ELECTRICAL CONTRACTOR.

SCHEDULE OF VRF OUTDOOR HEAT PUMP/RECOVERY UNITS													
MARK	SERVICE	LOCATION	MODEL N ^O ①	COOLING CAPACITY (MBH)	HEATING CAPACITY (MBH)	COMPRES. DATA TYPE	COND. DATA QTY	ELECTRICAL DATA MCA MOP		ELECTRICAL SERVICE	PHYSICAL DATA DIMENSION/WEIGHT (L XW XH")/(LBS)	REMARKS	
① ②	NEW ADDITION	ROOF	ARUM288DTE5	288	324	SCROLL	3	4	16.4/35.7	25/50	480/3/60	98x30x67/1200	REFER TO ③④⑤⑥

NOTES

① AS MANUFACTURED BY "L.G."

② INSTALL PER MANUFACTURER'S RECOMMENDATIONS.

③ BASED ON A.R.I. CERTIFIED COIL SELECTIONS; REFRIGERANT R-410A, EER 12.4/SEER 25.9/HSPF10.5.

④ DESIGN AIR CONDITIONS: SUMMER: OA (94°F/75°F) RA (77°F/65°F); WINTER: OA (5°F/3°F) RA (70°F/55°F). HW: 180°F/160°F

⑤ MOUNT ON RAILS. THREE PIPE SYSTEM. PROVIDE VIBRATION ISOLATORS, EQUIPMENT SUPPORTS, DISCONNECT SWITCH, CONVENIENCE OUTLET, LOW AMBIENT CONTROLS AND PHASE PROTECTION. DC INVERTER COMPRESSOR SPEED CONTROL BASED ON SYSTEM LOAD.

⑥ SYSTEM SHALL BE ABLE TO BE CONTROLLED BY BACNET EITHER DIRECTLY OR THROUGH AN EXTERNAL GATEWAY.

SCHEDULE OF DUCT MOUNTED HOT WATER COILS																
GENERAL DATA			SIZE					AIR SIDE					WATER SIDE		REMARKS	
MARK	SERVICE	LOCATION	WIDTH (IN.)	HEIGHT (INCHES)	FACE AREA (FT²)	ROWS	FINS PER INCH	CFM	MBH	PRESS DROP (WC)	VELOCITY (FPM)	E.A.T. (°F)	L.A.T. (°F)	FLOW RATE (GPM)		PRESS DROP Δ HEAD (FT)
① ②	NEW ADDITION	CEILING	—	—	6.4	2 MINIMUM	VARIABLE	3200	290	0.2" MAX	500	6	90	29.0	5 FT. MAX	REFER TO ③④⑤
NOTES	① ENTERING WATER TEMPERATURE 180°F, 20° ΔT.															
	② PROVIDE INSPECTION AND CLEANING DUCT ACCESS DOOR ON UPSTEAM SIDE OF COIL.															
	③ THE HOT WATER COIL IS SIZED TO HANDLE OUTDOOR AIR QUANTITIES AT 100 PERCENT OF OCCUPANCY WITHOUT HAVING TO RESORT TO CLOSING OUTDOOR AIR INTAKE DAMPERS ON A "DESIGN HEATING DAY" TO PREVENT FREEZE-UP.															

SCHEDULE OF VRF INDOOR UNITS													
MARK	MODEL No. ①	CFM HIGH	ELECTRICAL DATA			TOTAL COOL/HEAT MBH	DIMENSION/WEIGHT				REMARKS		
			MCA	MOCF	ELECTRIC SERVICE		W (IN.)	D (IN.)	H (IN.)	LBS			
④H	ARNU073TRD4	265	0.20	15	208/1/60	7.5/8.5	25	25	10	35	REFER TO ②③④⑤⑥		
④H	ARNU123TRD4	307	↓			12.3/13.6	25	25	10	40			
④H	ARNU183TRD4	565	0.56			19.1/21.5	33	33	12	68			
④H	ARNU243TNA4	742	↓			24.2/27.3	33	33	12	68			
④H	ARNU283TMA4	812	1.30			28.0/31.5	33	33	12	72			
④H	ARNU363TMA4	918	↓			30.0/32.0	33	33	12	72			
④S	PRHR023A	N/A	0.17			N/A	31	26	9	37	REFER TO ②⑤		
④S	PRHR023A		0.17				31	26	9	37			
④S	PRHR033A		0.17				31	26	9	40			
④S	PRHR043A		0.17				31	26	9	40			

NOTES

①

AS MANUFACTURED BY "L.G."

②

INSTALL PER MANUFACTURER'S RECOMMENDATIONS.

③

BASED ON A.R.I. CERTIFIED COIL SELECTIONS; REFRIGERANT R-410A.

④

PROVIDE FACTORY MOUNTED INTEGRAL CONDENSATE PUMP, CONDENSATE DRAIN PIPING, PIPING ENCLOSURE KIT, CHECK VALVE, ANTI SWEAT SLEEVE AND AUTO SHUTDOWN OVERFLOW SWITCH.

⑤

PROVIDE MOUNTING HARDWARE, VIBRATION ISOLATORS, DISCONNECT AND HARDWIRED REMOTE WALL MOUNTED CONTROLLER/THERMOSTAT. WHERE MULTIPLE CEILING CASSETTE UNITS TIE INTO A SINGLE ZONE CONTROLLER/THERMOSTAT, PROVIDE WIRED REMOTE GROUP CONTROL CABLE ASSEMBLY P2CWRCT AS REQUIRED.

⑥

SYSTEM SHALL BE ABLE TO BE CONTROLLED BY BACNET EITHER DIRECTLY OR THROUGH AN EXTERNAL GATEWAY.

SCHEDULE OF REGISTERS AND DIFFUSERS										
MARK	TYPE	SERVICE	MODEL No. ①	DIRECTION DISCHARGE	DAMPER TYPE	FINISH	TYPE	REMARKS		
(A)	CEILING DIFFUSER	SUPPLY	SCD	4-WAY	OPPOSED BLADE	PER ARCH.	SURFACE	REFER TO	②③④	
(B)	CEILING REGISTER	EXHAUST	635	—	OPPOSED BLADE	PER ARCH.	SURFACE	REFER TO	②③⑤	
(C)	CEILING GRILLE	EXHAUST	635	—	OPPOSED BLADE	PER ARCH.	LAY-IN	REFER TO	②③⑤	
(X)	EXISTING REGISTER/GRILLE									
NOTES										
① AS MANUFACTURED BY "PRICE".										
② INSTALL PER MANUFACTURER'S RECOMMENDATIONS.										
③ PROVIDE MOUNTING FRAME COMPATIBLE W/ MOUNTING SURFACE. COORDINATE ALL BORDER TYPES, COLORS, FINISHES AND DIMENSIONS WITH ARCHITECT.										
					④ SUPPLY NECK SIZE PER CFM RANGE (NOT TO EXCEED 500 fpm)		⑤ RETURN NECK SIZE PER CFM RANGE (NOT TO EXCEED 675 fpm)			
					50 TO 70 TO 99		100 TO 120 TO 299		300 TO 499 TO 799	
					500 TO 800 TO 1199		1200 TO 1499 TO 1999		250 TO 400 TO 599	
					600 TO 800 TO 1100		1200 TO 1499 TO 1999		250 TO 400 TO 599	
					6x6 TO 9x9 TO 12x12		15x15 TO 18x18 TO 21x21		24x24 TO 36x36 TO 48x48	
					500 TO 800 TO 1100		1200 TO 1499 TO 1999		250 TO 400 TO 599	
					600 TO 800 TO 1100		1200 TO 1499 TO 1999		250 TO 400 TO 599	
					6x6 TO 9x9 TO 12x12		15x15 TO 18x18 TO 21x21		24x24 TO 36x36 TO 48x48	

SCHEDULE OF EXHAUST FANS									
MARK	SERVICE	LOCATION	TYPE	MODEL No. ①	CFM	TOT. S.P. IN H ₂ O	HP @ 1/60	ELECTRIC SERVICE	REMARKS
(A)	STORAGE 77	ROOF	CENTRIFUGAL	G-095-VGEX-QD	100	0.125	1/6	120/1/60	REFER TO ②③④
NOTES									
① AS MANUFACTURED BY "GREENHECK".									
② INSTALL PER MANUFACTURER'S RECOMMENDATIONS.									
③ FURNISH FACTORY SPEED CONTROL.									
④ FURNISH FACTORY BACKDRAFT DAMPER AND DISCONNECT SWITCH.									

SCHEDULE OF EXHAUST FANS									
MARK	SERVICE	LOCATION	TYPE	MODEL No. ①	CFM	TOT. S.P. IN H ₂ O	HP AMPS	ELECTRIC SERVICE	REMARKS
② ③	STORAGE 77	ROOF	CENTRIFUGAL	G-095-VGEX-QD	100	0.125	1/5 —	120/1/60	REFER TO ③④⑤
NOTES ① AS MANUFACTURED BY "GREENHECK". ② INSTALL PER MANUFACTURER'S RECOMMENDATIONS. ③ FURNISH FACTORY SPEED CONTROL. ④ FURNISH FACTORY BACKDRAFT DAMPER AND DISCONNECT SWITCH.									

SCHEDULE OF CABINET HEATERS										
MARK	TYPE UNIT	MODEL NO. ①	CAPACITY DATA				MOTOR WATTS	MOTOR RPM	ELECTRIC SERVICE	REMARKS
			BTU/HR	CFM	GPM	PD.FT.				
① ② ③ ④ ⑤ ⑥	CEILING MTD.	RC 1170 03	20.6	335	2.0	0.25	1/15	1050	120/1/60	REFER TO ②③④⑤⑥
NOTES	① AS MANUFACTURED BY "STERLING".									
	② INSTALL PER MANUFACTURER'S RECOMMENDATIONS.									
	③ CAPACITIES BASED ON LOW SPEED FAN SETTING, AND 160° F A.W.T.									
	④ PROVIDE 2 ROW COIL, THROWAWAY FILTERS, INTEGRAL SPEED CONTROL, DISCONNECT SWITCH, REMOTE WALL SENSOR CONNECTED TO BMS, GASKET AND PERMA LAP FRAME. COORDINATE FINISH AND COLOR WITH ARCHITECT.									
	⑤ UNIT DIMENSIONS 36"x25"x9.5", WEIGHT 150 LBS.									
	⑥ PROVIDE WITH HOT WATER RETURN AQUASTAT. AQUASTAT SHALL NOT ALLOW FAN TO OPERATE AT WATER TEMPERATURE BELOW 110 DEGREES F.									

SCHEDULE OF MINIMUM VENTILATION ROOM FLOW RATES											
		A	B	C	D	E	F	G	H	I	
ROOM NAME/NUMBER	OCCUPANCY CATEGORY	ROOM AREA (SQ.FT.)	PEOPLE DENSITY (#P/1000 SQ.FT.) / # OF FIXTURES	PEOPLE OUTDOOR AIR FLOW RATE (CFM/PERSON)	AREA OUTDOOR AIR FLOW RATE IN BREATHING ZONE (CFM/SQ.FT.)	EXHAUST AIR FLOW RATE (CFM/SQ.FT.)	NUMBER OF PEOPLE (A+B)+1000=BP	OUTDOOR AIR FLOW RATE WITHOUT ZONE EFFECTIVENESS FACTOR (FxC)(H+AxD)=CFM	ZONE AIR DISTRIBUTION EFFECTIVENESS FACTOR	MINIMUM ROOM VENTILATION AIR FLOW RATE G+H=CFM	MINIMUM EXHAUST AIR FLOW RATE A+E=CFM
Vestibule 70	CORRIDORS	200	0	0	0.06	0	0	12	0.8	15	0
Active Commons 71	CLASSROOM (AGES 9+)	690	35	10	0.12	0	25	333	0.8	416	0
5th Grade Learning Studio 73	CLASSROOM (AGES 9+)	790	35	10	0.12	0	28	375	0.8	469	0
5th Grade Learning Studio 75	CLASSROOM (AGES 9+)	780	35	10	0.12	0	28	374	0.8	467	0
5th Grade Learning Studio 78	CLASSROOM (AGES 9+)	740	35	10	0.12	0	26	349	0.8	436	0
5th Grade Learning studio 80	CLASSROOM (AGES 9+)	780	35	10	0.12	0	28	374	0.8	467	0
Workshop Commons 76	CLASSROOM (AGES 9+)	840	35	10	0.12	0	30	401	0.8	501	0
Conference 72	CONFERENCE/MEETING	150	50	5	0.06	0	8	49	0.8	61	0
SGR 74	CLASSROOM (AGES 9+)	110	35	10	0.12	0	4	53	0.8	67	0
SGR 79	CLASSROOM (AGES 9+)	90	35	10	0.12	0	4	51	0.8	64	0
Storage 77	STORAGE ROOMS	150	0	0	0.12	0	0	18	0.8	23	18

BEFORE FABRICATION THIS CONTRACTOR SHALL VERIFY ALL MEASUREMENTS AND CONDITIONS ON JOB AND COORDINATE HIS WORK WITH THE WORK OF ALL OTHER CONTRACTORS

Revision Schedule

No.	Description	Date
A	SED Submission	10/23/2020
B	ISSUED FOR BID	08/10/2021



Geddis Architects

Architecture. Planning. Interiors

71 Old Post Road
P.O. Box 1020
Southport, CT 06890
(203) 256-8700

Fielding International

Transforming Education by Design

259 Water Street Suite 1L
Warren , RI 02885 USA
+1 401-289-2789

BGA

BARILE GALLAGHER & ASSOCIATES

CONSULTING ENGINEERS
39 MARBLE AVE. PLEASANTVILLE, NY 10570
914.328.6060 GENERAL@BGA-ENG.COM www.BGA-ENG.COM

Construction Manager
SAVIN ENGINEERS, P.C.
3 Campus Drive
Pleasantville, NY 10570
914-769-3200

Structural Engineer
QDEH ENGINEERS
1223 Mineral Spring Ave
North Providence, RI 02904
401-724-1771

Civil Engineer
WESTON & SAMPSON
1 Winners Circle, Suite 130
Albany, NY 12205
518-463-4400

Roof Consultant
WATSKY ASSOCIATES INC.
20 Madison Ave
Valhalla, NY 10595
914-948-3450

Acoustic Consultant
DP DESIGN
12 Cold Spring Street
Providence, RI
401-861-3218

AV Consultant
CAVANAUUGH TOCCI
327 F Boston Post Road
Sudbury, MA 01778-3027
978-443-7871

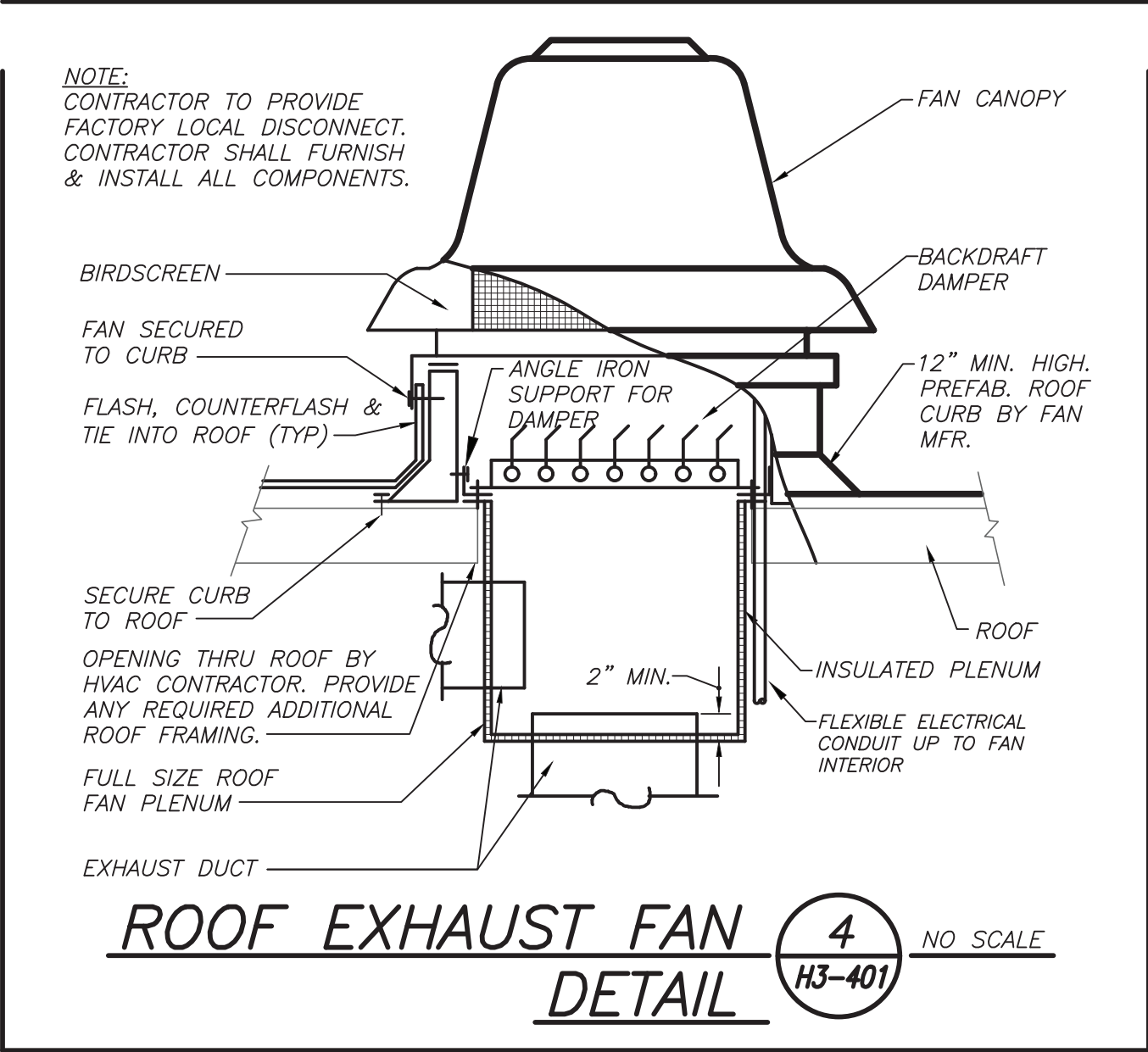
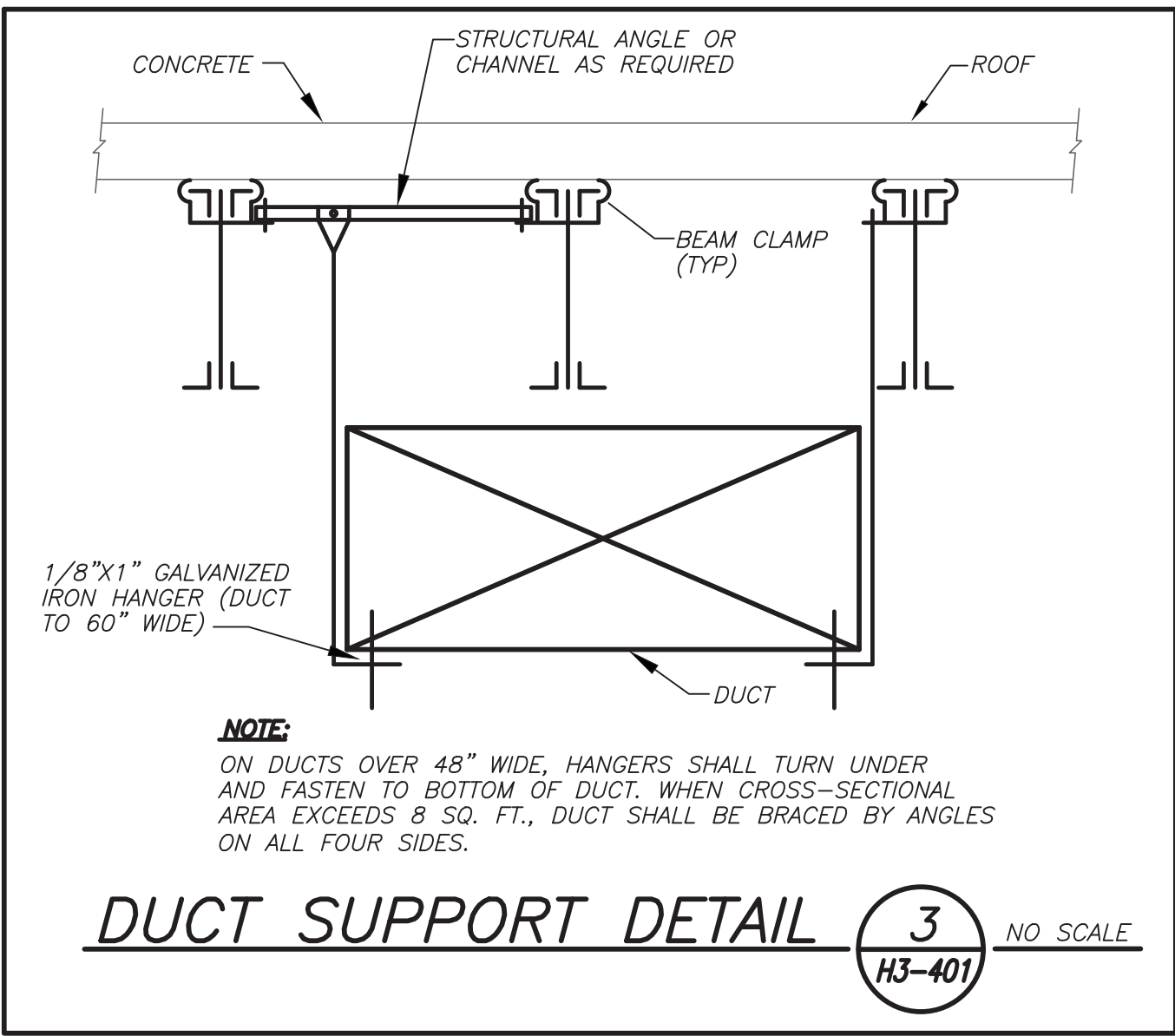
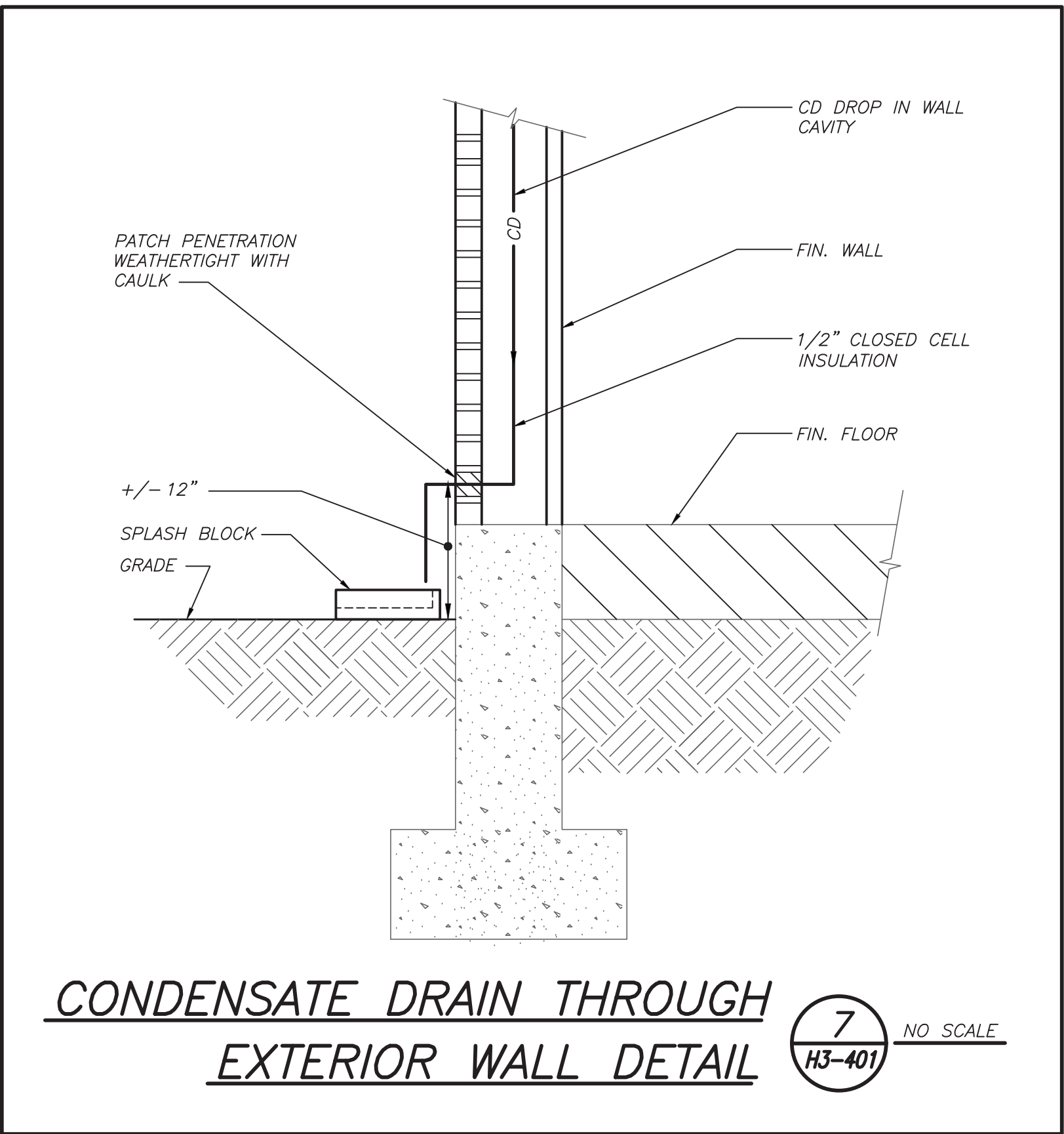
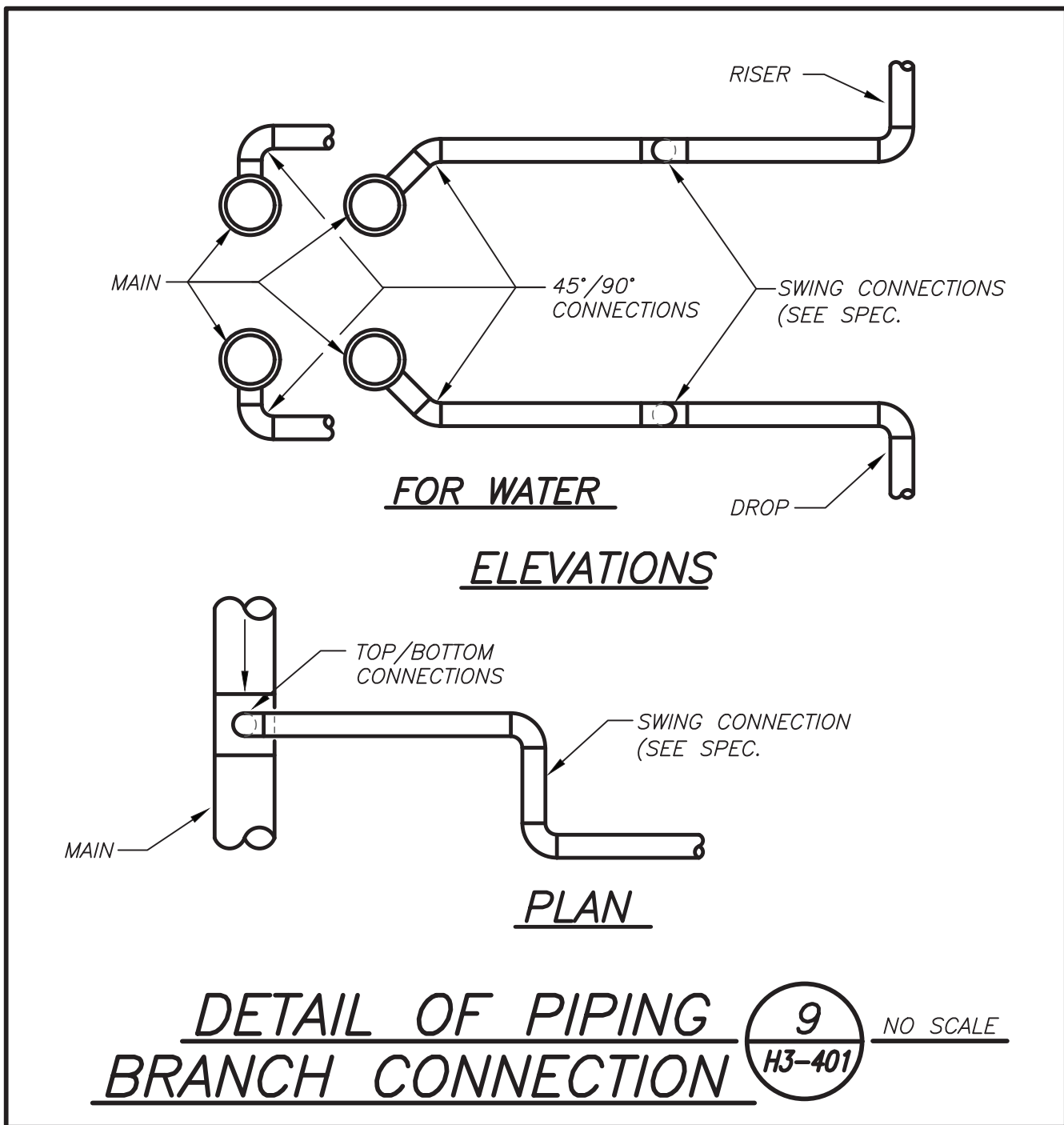
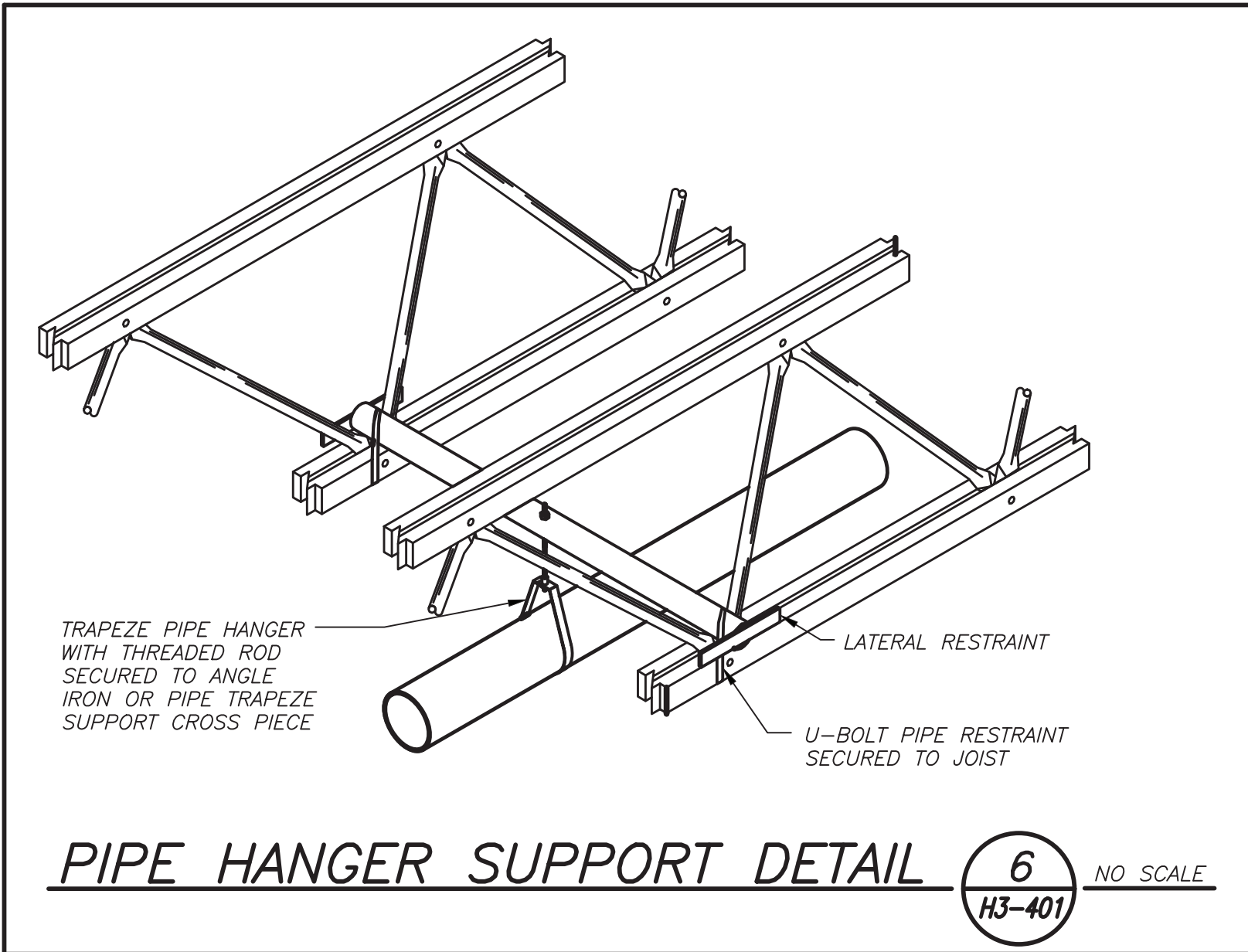
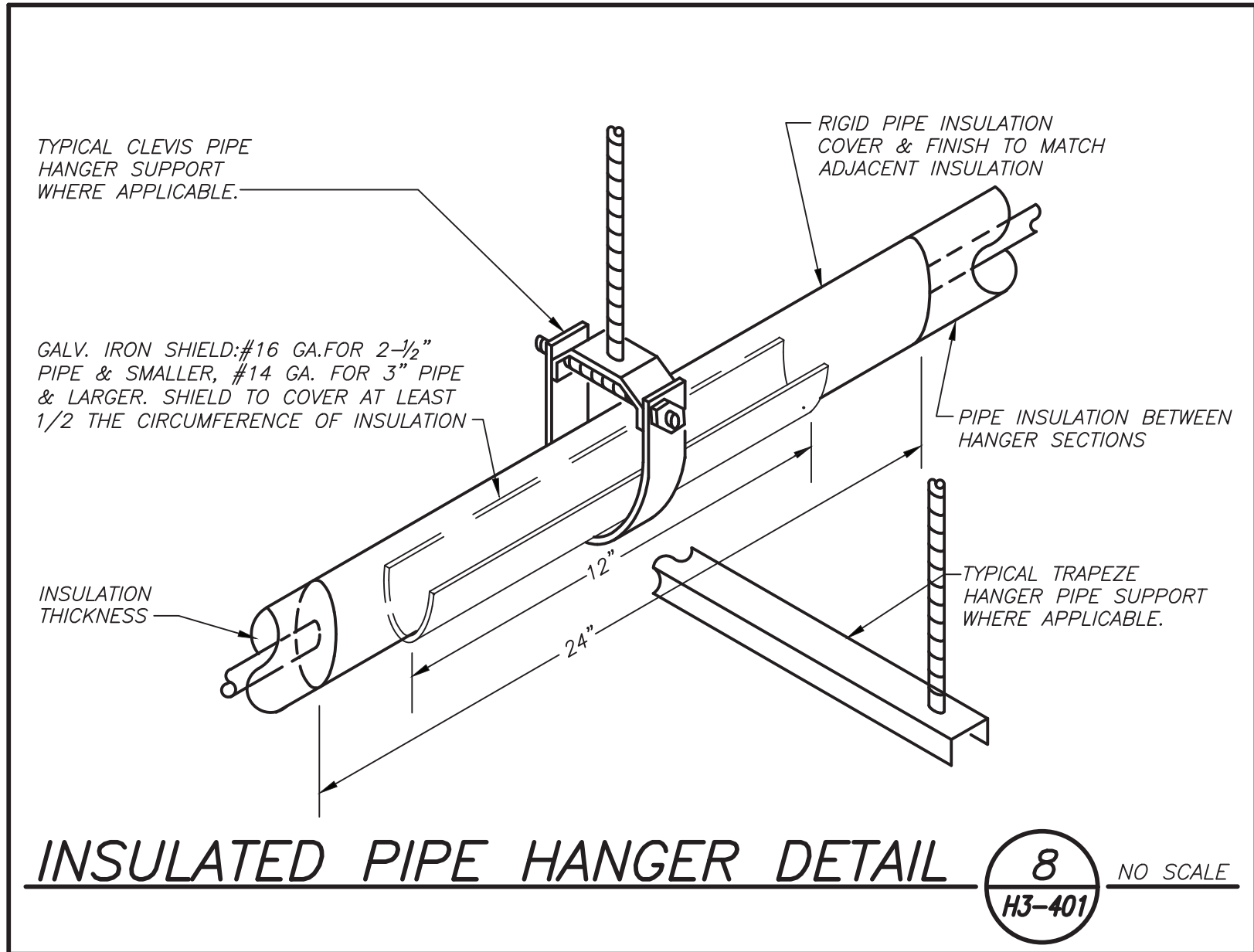
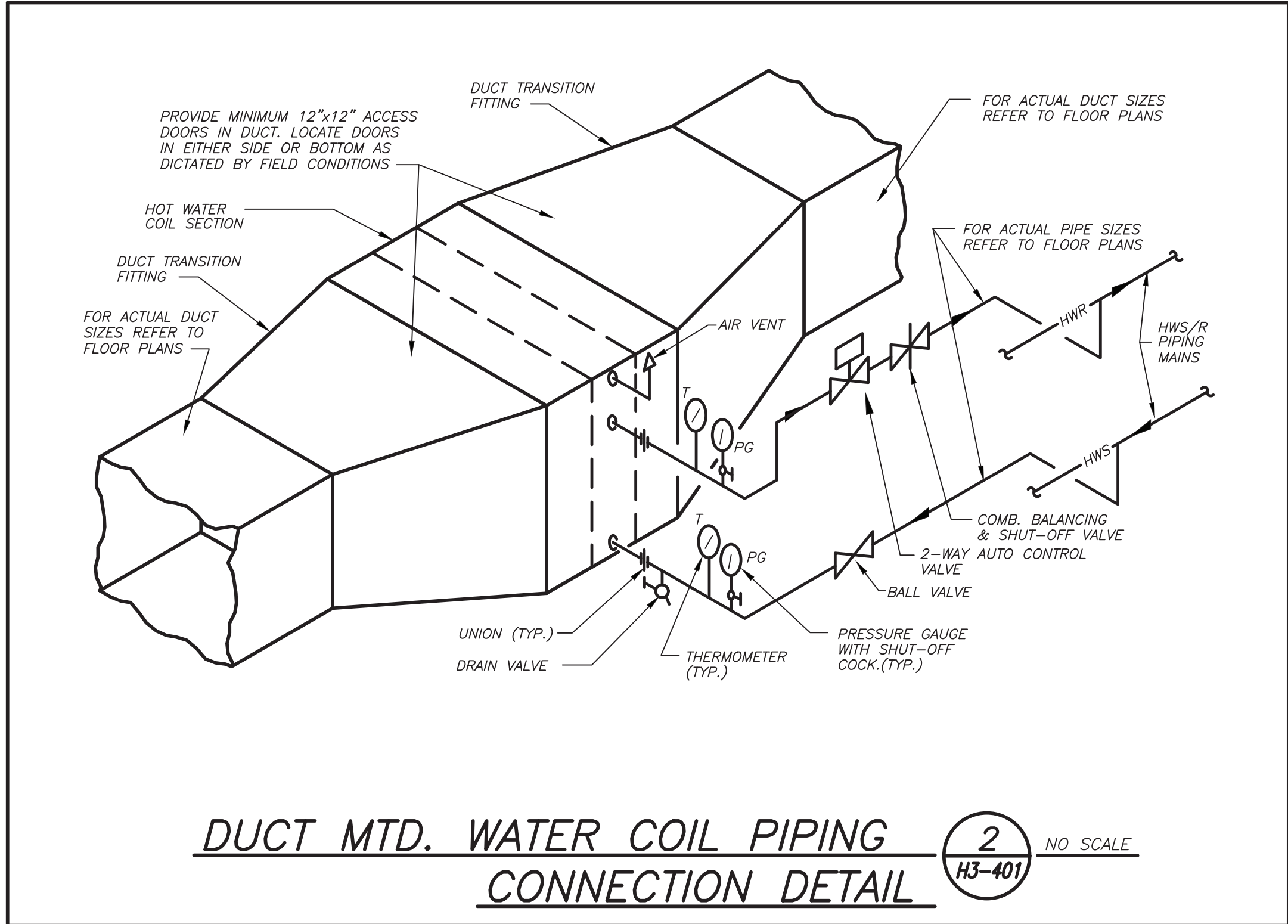
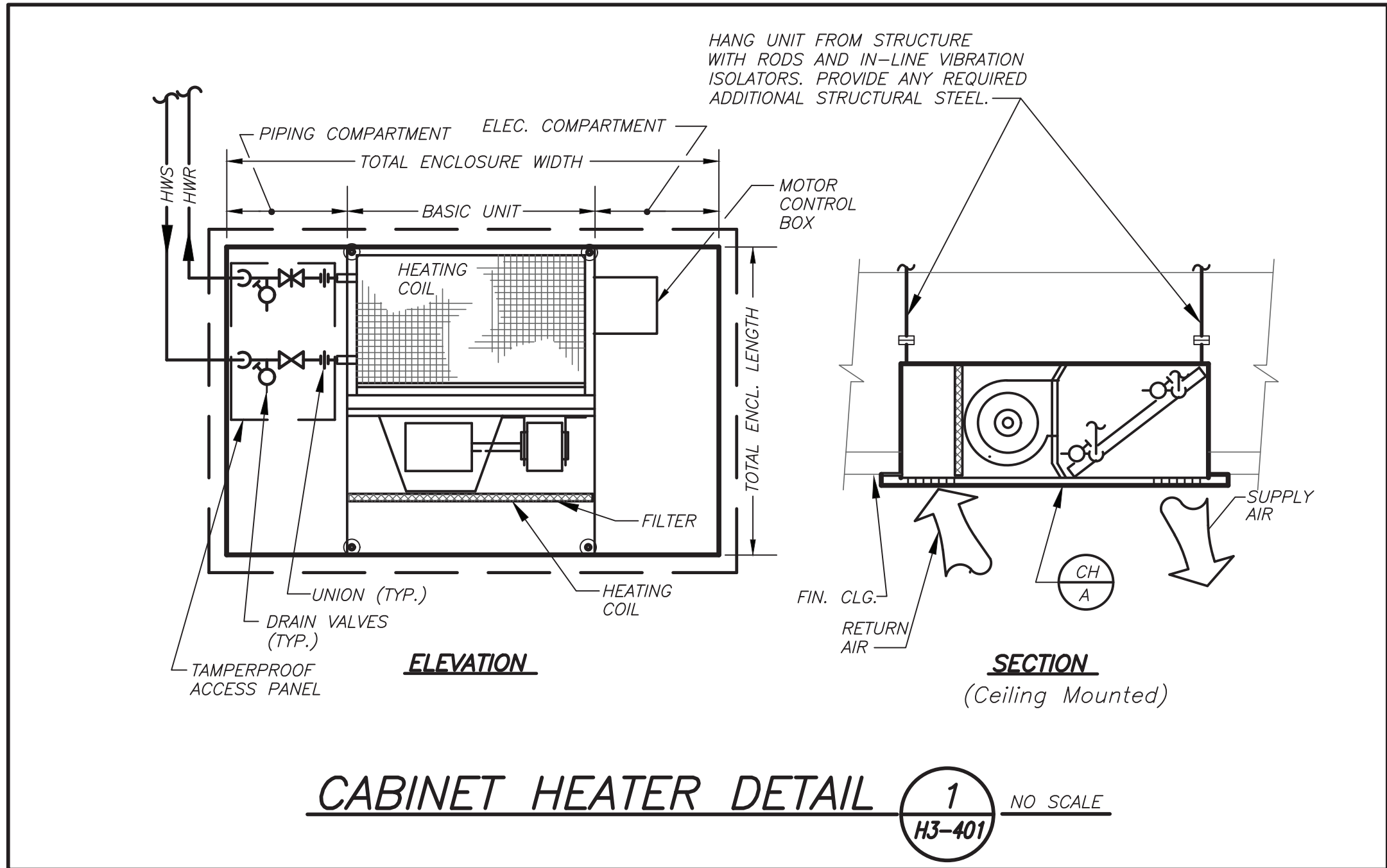
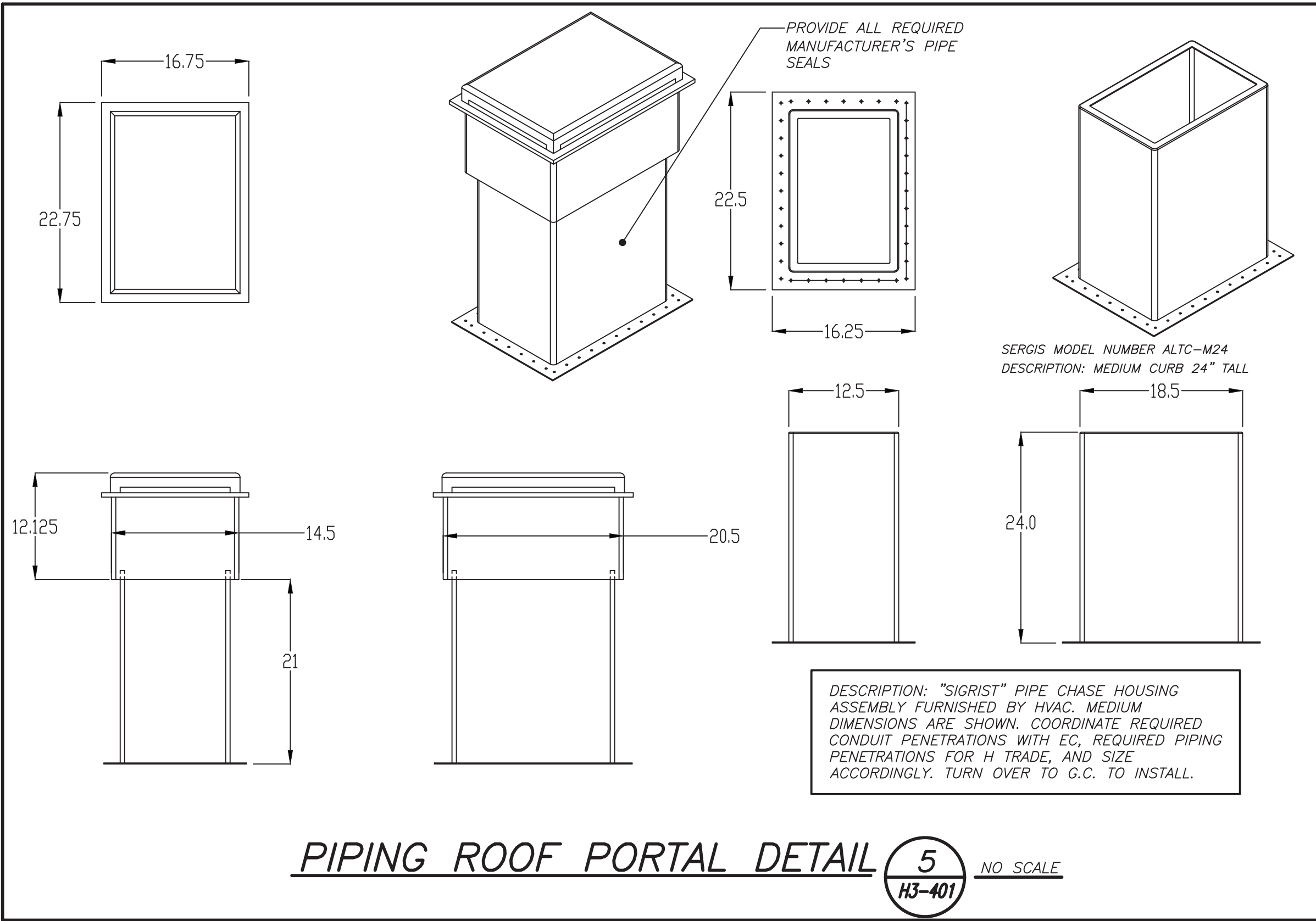
SED#: 6618-0001-0003-025

PROJECT

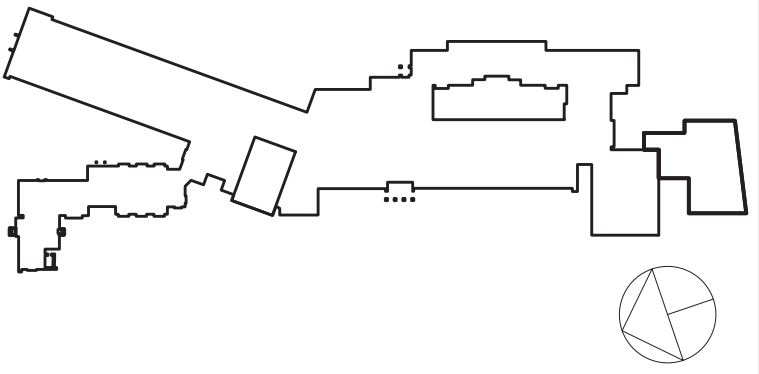
Rye City Schools
555 Theodore Fremd Ave, Rye, NY 10580

Midland Elementary School

312 Midland Ave, Rye NY



Revision Schedule		
No.	Description	Date
A	SED Submission	10/23/2020
B	ISSUED FOR BID	08/10/2021



Geddis Architects

Architecture. Planning. Interiors

71 Old Post Road
P.O. Box 1020
Southport, CT 06890
(203) 256-8700

Fielding International

Transforming Education by Design

259 Water Street Suite 1L
Warren, RI 02885 USA
+1 401-289-2789

bga

BARILE GALLAGHER & ASSOCIATES

CONSULTING ENGINEERS

39 MARBLE AVE. PLEASANTVILLE, NY 10570
914.328.6060 GENERAL@BGA-ENG.COM WWW.BGA-ENG.COM

Construction Manager
SAVIN ENGINEERS, P.C.
3 Campus Drive
Pleasantville, NY 10570
914-769-3200

Structural Engineer
ODEH ENGINEERS
1223 Mineral Spring Ave
North Providence, RI 02904
401-724-1771

Civil Engineer
WESTON & SAMPSON
1 Winners Circle, Suite 130
Albany, NY 12205
518-463-4400

Roof Consultant
WATSKY ASSOCIATES INC.
20 Madison Ave
Valhalla, NY 10595
914-948-3450

Acoustic Consultant
DP DESIGN
12 Cold Spring Street
Providence, RI
401-861-3218

AV Consultant
CAVANAUGH TOCCI
327 F Boston Post Road
Sudbury, MA 01776-3027
978-443-7871

SED#: 6618-0001-0003-025

PROJECT

Rye City Schools

555 Theodore Fremd Ave, Rye, NY 10580

Midland Elementary School

312 Midland Ave, Rye NY 10580

DETAILS

SEAL & SIGNATURE DATE: 12/12/19
PROJECT No: 9200
DRAWING BY: Author
CHK BY: BGA/BGA
DWG No: H3-401