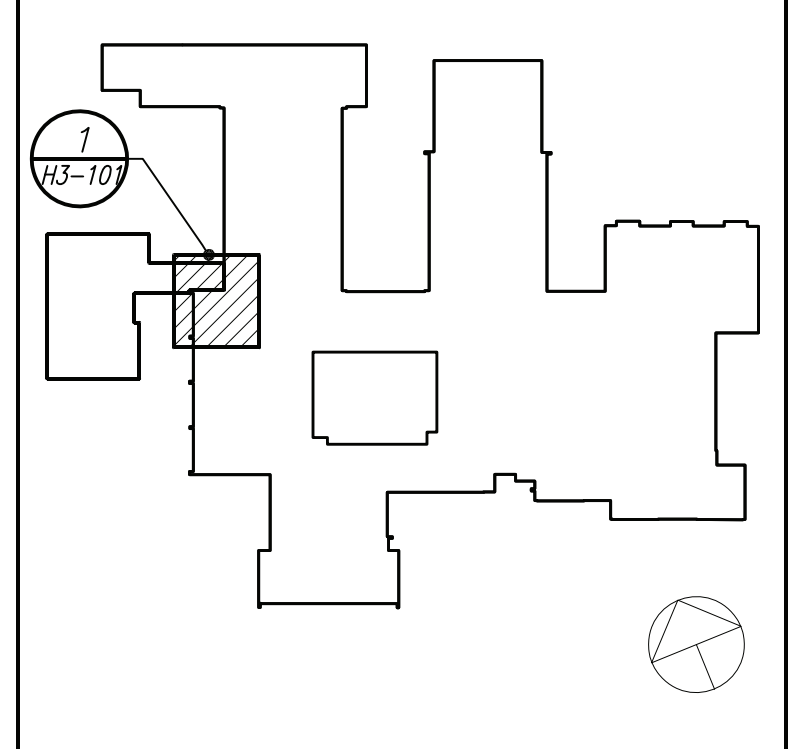


### LEGEND

	EXISTING DUCTWORK, EQUIPMENT, ETC. TO REMAIN
	EXISTING DUCTWORK, EQUIPMENT, ETC. TO BE REMOVED
	NEW DUCTWORK 12" DIA. OUTSIDE DIAM. ROUND
	NEW DUCTWORK 12" SQUARE
	SQUARE DUCT TURN WITH TURNING VANES
	EXISTING 4-WAY CEILING DIFFUSER
	EXISTING CEILING REGISTER
	NEW 4-WAY CEILING DIFFUSER
	NEW CEILING EXHAUST/RETURN REGISTER
	DUCT MTD. MANUAL AIR VOLUME DAMPER (W/LOCKING DEVICE) OR CABLE OPERATED WHERE DAMPER IS INACCESSIBLE.
	FIRE DAMPER (U.L. APPROVED) & ACCESS DOOR
	EHWS EXISTING HOT WATER SUPPLY PIPING
	EHWR EXISTING HOT WATER RETURN PIPING
	HWSS NEW HOT WATER SUPPLY PIPING
	L NEW LIQUID REFRIGERANT PIPING
	S NEW SUCTION REFRIGERANT PIPING
	HG NEW HOT GAS REFRIGERANT PIPING
	CD CONDENSATE DRAIN PIPING
	FLOW DIRECTION WITHIN PIPE
	SHUT OFF VALVE
	COMBINATION BALANCING & SHUT-OFF VALVE (CIRCUIT SETTER)
	PIPE CONNS. (BOTTOM, TOP 45 OR 90; PIPE UP)
	CLEAN OUT
	HPD NEW VRF OUTDOOR HEAT PUMP UNIT IDENTIFICATION
	IFP NEW VRF INDOOR FLOW SELECTOR IDENTIFICATION
	AHP NEW VRF INDOOR AIR HANDLER UNIT IDENTIFICATION
	ERU NEW ENERGY RECOVERY UNIT IDENTIFICATION
	EF NEW EXHAUST FAN IDENTIFICATION
	UV EXISTING UNIT VENTILATOR IDENTIFICATION
	UVL EXISTING UNIT VENTILATOR INTAKE LOUVER IDENTIFICATION
	FT EXISTING FINNED TUBE RADIATION IDENTIFICATION
	WMTD (5'-2" +/- A.F.F.) TEMPERATURE SENSOR
	ES EXISTING TEMPERATURE SENSOR
	POD POINT OF DISCONNECTION
	POC POINT OF CONNECTION, NEW TO EXISTING
	DU DOOR UNDERCUT
	CFM CUBIC FEET PER MINUTE
	WMG WIRE MESH GRILLE
	OAI OUTSIDE AIR INTAKE
	FC FLEXIBLE CONNECTION
	AD ACCESS DOOR
	VD VOLUME DAMPER
	FD/AD FIRE DAMPER AND ACCESS DOOR
	HVAC HEATING, VENTILATING, AIR CONDITIONING CONTRACTOR
	SECTION/DETAIL/ELEVATION/PART PLAN NUMBER
	SECTION/ELEVATION IDENTIFICATION

- ### REMOVAL NOTES
- REMOVAL NOTES:**
- THE SCOPE OF REMOVAL SHOWN ON "REMOVALS" DRAWINGS IS DIAGRAMMATIC ONLY AND INDICATES THE INTENT OF THE WORK TO BE PERFORMED AND NOT THE COMPLETE SCOPE OF DEMOLITION AND/OR REMOVAL WORK. IT SHALL BE THE RESPONSIBILITY OF THIS CONTRACTOR TO REMOVE ANY RELATED MECHANICAL DEVICES EVEN IF NOT SPECIFICALLY INDICATED TO BE REMOVED ON THESE DRAWINGS IN ORDER TO ACCOMMODATE NEW WORK.
  - DEVICES SHOWN CROSS HATCHED ON DRAWINGS ARE ITEMS TO BE REMOVED. ANY DEVICES REMOVED SHALL INCLUDE (BUT SHALL NOT BE LIMITED TO) THE REMOVAL OF ALL ASSOCIATED PIPING, CONTROLS, ETC. THAT ARE NOT INCORPORATED IN THE NEW LAYOUT, UNTIL SUCH REMOVAL IS COMPLETE. THIS CONTRACTOR SHALL PERFORM ALL WORK REQUIRED TO INSURE CONTINUITY OF SERVICE TO EXISTING REMAINING EQUIPMENT. NO EXTRAS RELATING TO THE SCOPE OF WORK DESCRIBED WILL BE ALLOWED.
  - EQUIPMENT, PIPING, ETC., REQUIRED TO RECONNECT SHALL BE INSTALLED CONCEALED WITHIN THE NEW SUSPENDED CEILINGS, PARTITIONS AND/OR WALLS, FLOORS. NO SURFACE MOUNTED OR EXPOSED EQUIPMENT, PIPING, ETC., SHALL BE PERMITTED, UNLESS SPECIFICALLY INDICATED.
  - ALL ITEMS TO BE REMOVED SHALL BE REVIEWED WITH THE OWNER PRIOR TO REMOVAL. OWNER SHALL HAVE FIRST SALVAGE RIGHTS. ITEMS THE OWNER WISHES TO KEEP SHALL BE REMOVED WITH CARE AND STORED AS DIRECTED BY OWNER. ITEMS THE OWNER DOES NOT WISH TO KEEP SHALL BE REMOVED FROM THE SITE AND DISPOSED OF PROPERLY.
  - REMOVE CONNECTING PIPING, CONTROLS AND SUPPORTS. COORDINATE WITH GC TO PATCH AND SEAL ASSOCIATED WALLS, FLOOR, CEILINGS AND ROOF OPENINGS TO MATCH EXISTING CONSTRUCTION.

Revision Schedule		
No.	Description	Date
A	SED Submission	10/23/2020
B	ISSUED FOR BID	8/10/2021



**Geddis Architects**

Architecture. Planning. Interiors

71 Old Post Road  
P.O. Box 1020  
Southport, CT 06890  
(203) 256-8700

**Fielding International**

Transforming Education by Design

259 Water Street Suite 1L  
Warren, RI 02885 USA  
+1 401-289-2789

**loga**

BARILE GALLAGHER & ASSOCIATES

CONSULTING ENGINEERS  
39 MARBLE AVE. PLEASANTVILLE, NY 10570  
914.328.9260 GENERAL@BGA-ENG.COM www.BGA-ENG.COM

- Construction Manager**  
SAVIN ENGINEERS, P.C.  
3 Campus Drive  
Pleasantville, NY 10570  
914-769-3200
- Structural Engineer**  
ODEH ENGINEERS  
1223 Mineral Spring Ave  
North Providence, RI 02904  
401-724-1771
- Civil Engineer**  
WESTON & SAMPSON  
1 Winners Circle, Suite 130  
Albany, NY 12205  
518-463-4400
- Acoustic Consultant**  
DP DESIGN  
12 Cold Spring Street  
Providence, RI  
401-861-3218
- AV Consultant**  
CAVANAUGH TOCCI  
327 F Boston Post Road  
Sudbury, MA 01776-3027  
978-443-7871

SED#: 6618-0001-0001-023

PROJECT

**Rye City Schools**

555 Theodore Fremd Ave, Suite B-101

**Osborn Elementary School**

10 Osborn Road, Rye NY 10580

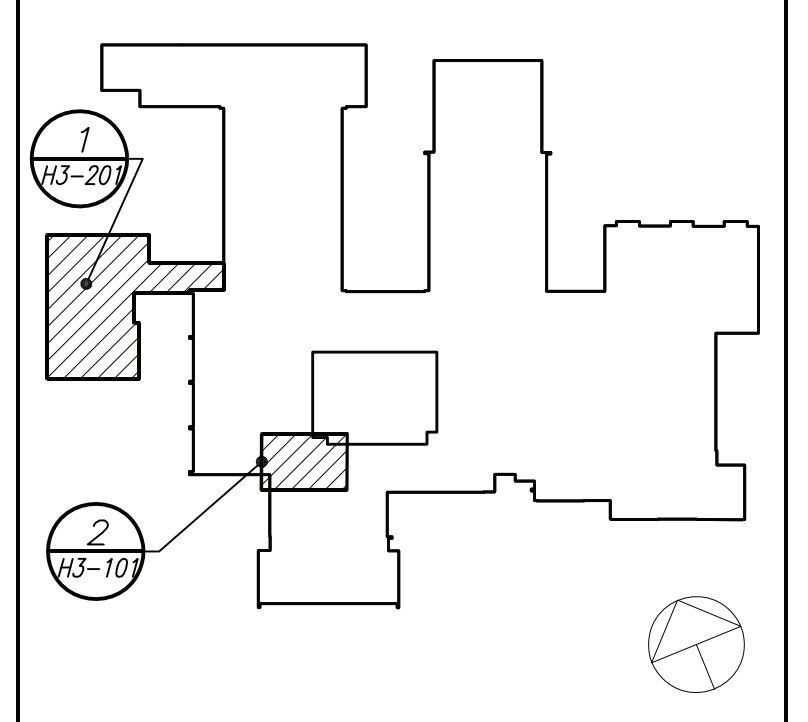
**LEGEND, NOTES, AND PART FIRST FLOOR PLAN**

SEAL & SIGNATURE	DATE: 02/12/20
	PROJECT No: 9200
	DRAWING BY: BGA
	CHK BY: BGA
	DWG No: H3-101

BEFORE FABRICATION THIS CONTRACTOR SHALL VERIFY ALL MEASUREMENTS AND CONDITIONS ON JOB AND COORDINATE HIS WORK WITH THE WORK OF ALL OTHER CONTRACTORS



Revision Schedule		
No.	Description	Date
A	SED Submission	10/23/2020
B	ISSUED FOR BID	8/10/2021



**Geddis Architects**  
 Architecture. Planning. Interiors  
 71 Old Post Road  
 P.O. Box 1020  
 Southport, CT 06890  
 (203) 256-8700

**Fielding International**  
 Transforming Education by Design  
 259 Water Street Suite 1L  
 Warren, RI 02885 USA  
 +1 401-289-2789

**BGA**  
 BARILE GALLAGHER & ASSOCIATES  
 CONSULTING ENGINEERS  
 39 MARBLE AVE. PLEASANTVILLE, NY 10570  
 914.328.0900 GENERAL@BGA-ENG.COM WWW.BGA-ENG.COM

**Construction Manager**  
 SAVIN ENGINEERS, P.C.  
 3 Campus Drive  
 Pleasantville, NY 10570  
 914-769-3200

**Structural Engineer**  
 ODEH ENGINEERS  
 1223 Mineral Spring Ave  
 North Providence, RI 02904  
 401-724-1771

**Civil Engineer**  
 WESTON & SAMPSON  
 1 Winners Circle, Suite 130  
 Albany, NY 12205  
 518-463-4400

**Acoustic Consultant**  
 DP DESIGN  
 12 Cold Spring Street  
 Providence, RI  
 401-861-3218

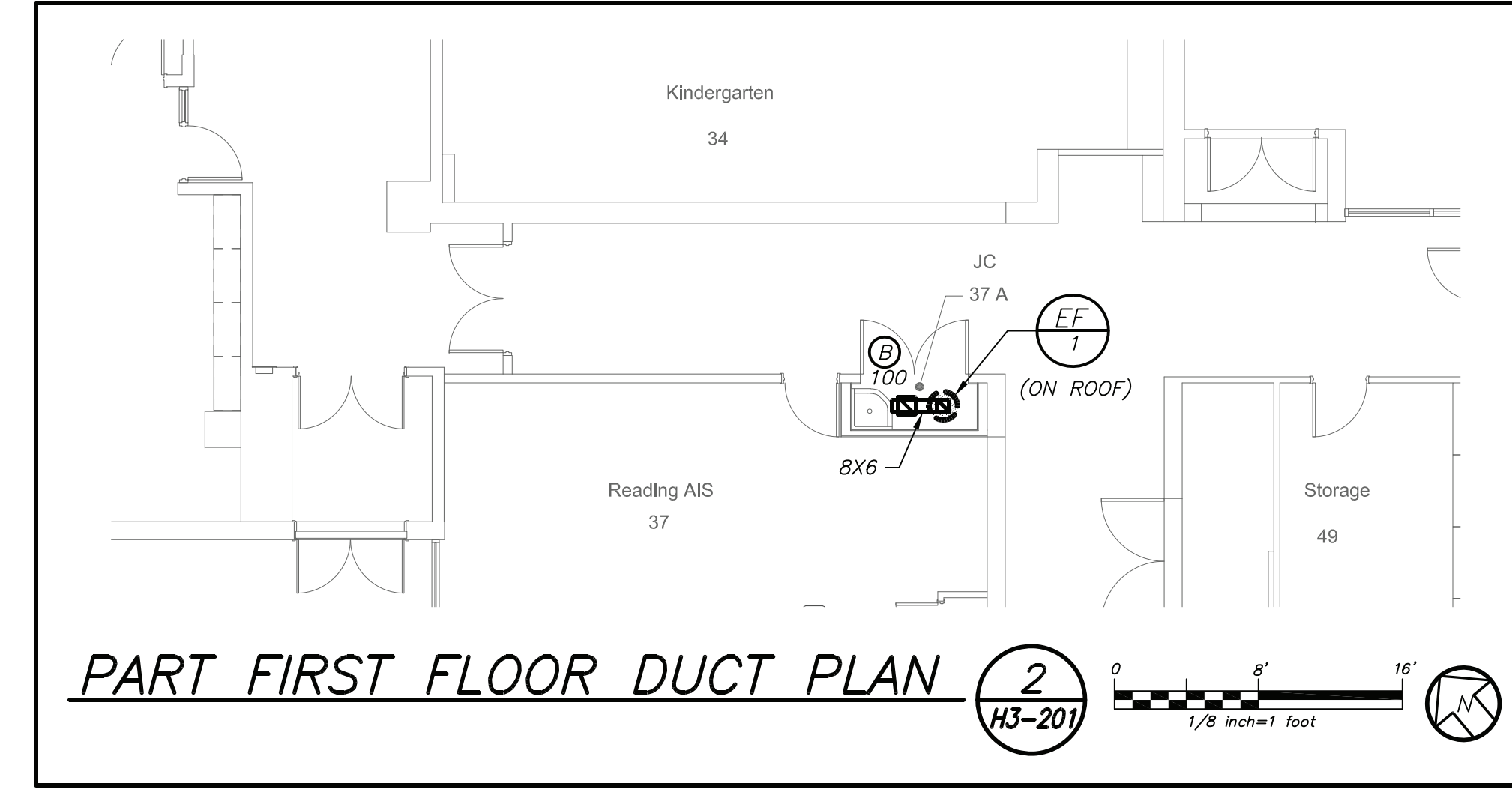
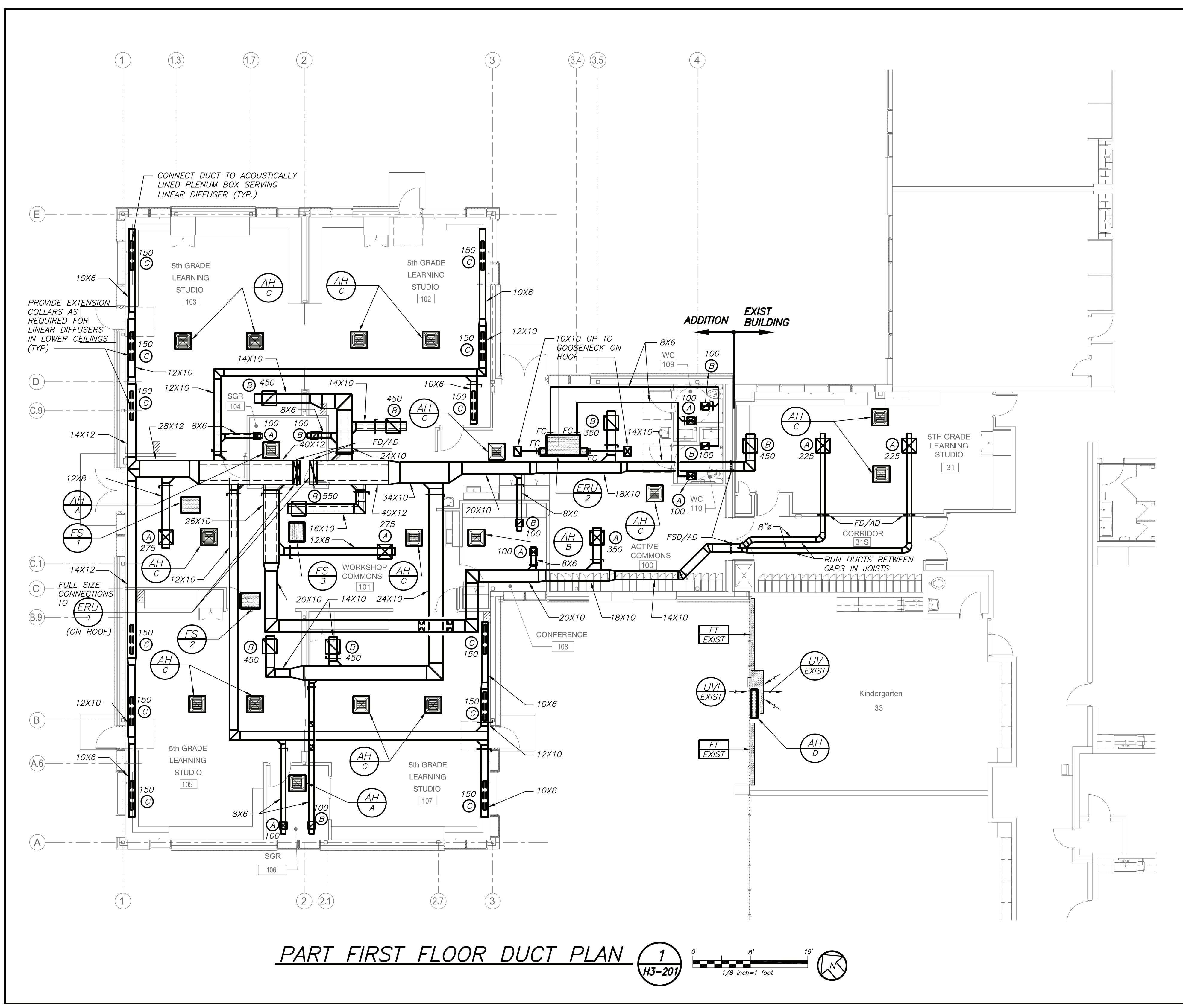
**AV Consultant**  
 CAVANAUGH TOCCI  
 327 F Boston Post Road  
 Sudbury, MA 01776-3027  
 978-443-7871

SED#: 6618-0001-0001-023

PROJECT  
**Rye City Schools**  
 555 Theodore Fremd Ave, Suite B-101  
**Osborn Elementary School**  
 10 Osborn Road, Rye NY 10580

**ADDITION FIRST FLOOR DUCT PLAN**

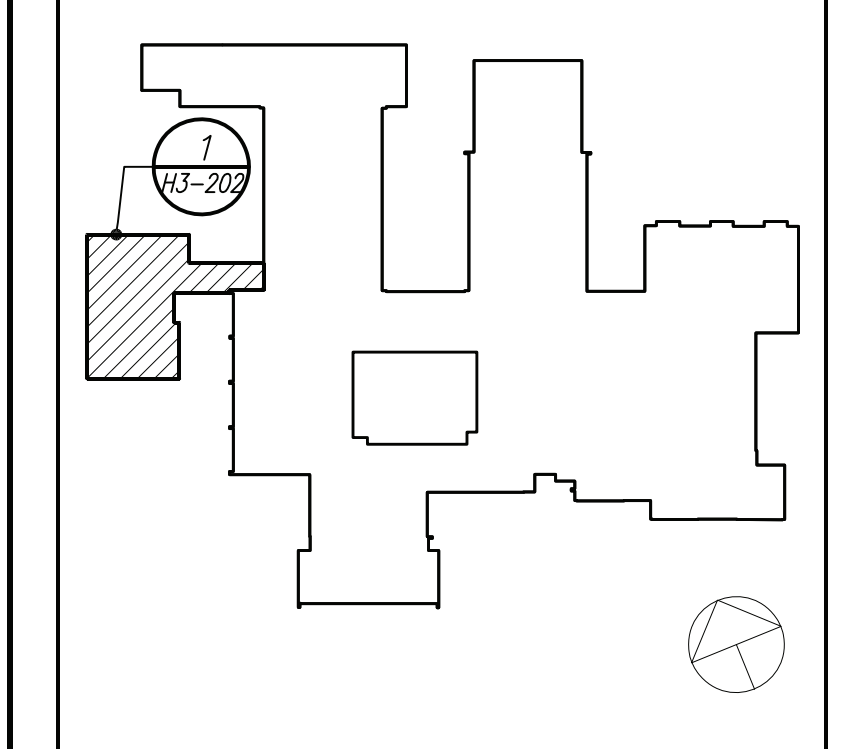
SEAL & SIGNATURE \_\_\_\_\_ DATE: 02/12/20  
 PROJECT No: 9200  
 DRAWING BY: BGA  
 CHK BY: BGA  
 DWG No: H3-201



BEFORE FABRICATION THIS CONTRACTOR SHALL VERIFY ALL MEASUREMENTS AND CONDITIONS ON JOB AND COORDINATE HIS WORK WITH THE WORK OF ALL OTHER CONTRACTORS



Revision Schedule		
No.	Description	Date
A	SED Submission	10/23/2020
B	ISSUED FOR BID	8/10/2021



**Geddis Architects**  
 Architecture. Planning. Interiors  
 71 Old Post Road  
 P.O. Box 1020  
 Southport, CT 06890  
 (203) 256-8700

**Fielding International**  
 Transforming Education by Design  
 259 Water Street Suite 1L  
 Warren, RI 02885 USA  
 +1 401-289-2789

**BGA**  
 BARILE GALLAGHER & ASSOCIATES  
 CONSULTING ENGINEERS  
 39 MARBLE AVE. PLEASANTVILLE, NY 10570  
 914.328.6960 GENERAL@BGA-ENG.COM WWW.BGA-ENG.COM

**Construction Manager**  
 SAVIN ENGINEERS, P.C.  
 3 Campus Drive  
 Pleasantville, NY 10570  
 914-769-3200

**Structural Engineer**  
 ODEH ENGINEERS  
 1223 Mineral Spring Ave  
 North Providence, RI 02904  
 401-724-1771

**Civil Engineer**  
 WESTON & SAMPSON  
 1 Winners Circle, Suite 130  
 Albany, NY 12205  
 518-463-4400

**Acoustic Consultant**  
 DP DESIGN  
 12 Cold Spring Street  
 Providence, RI  
 401-861-3218

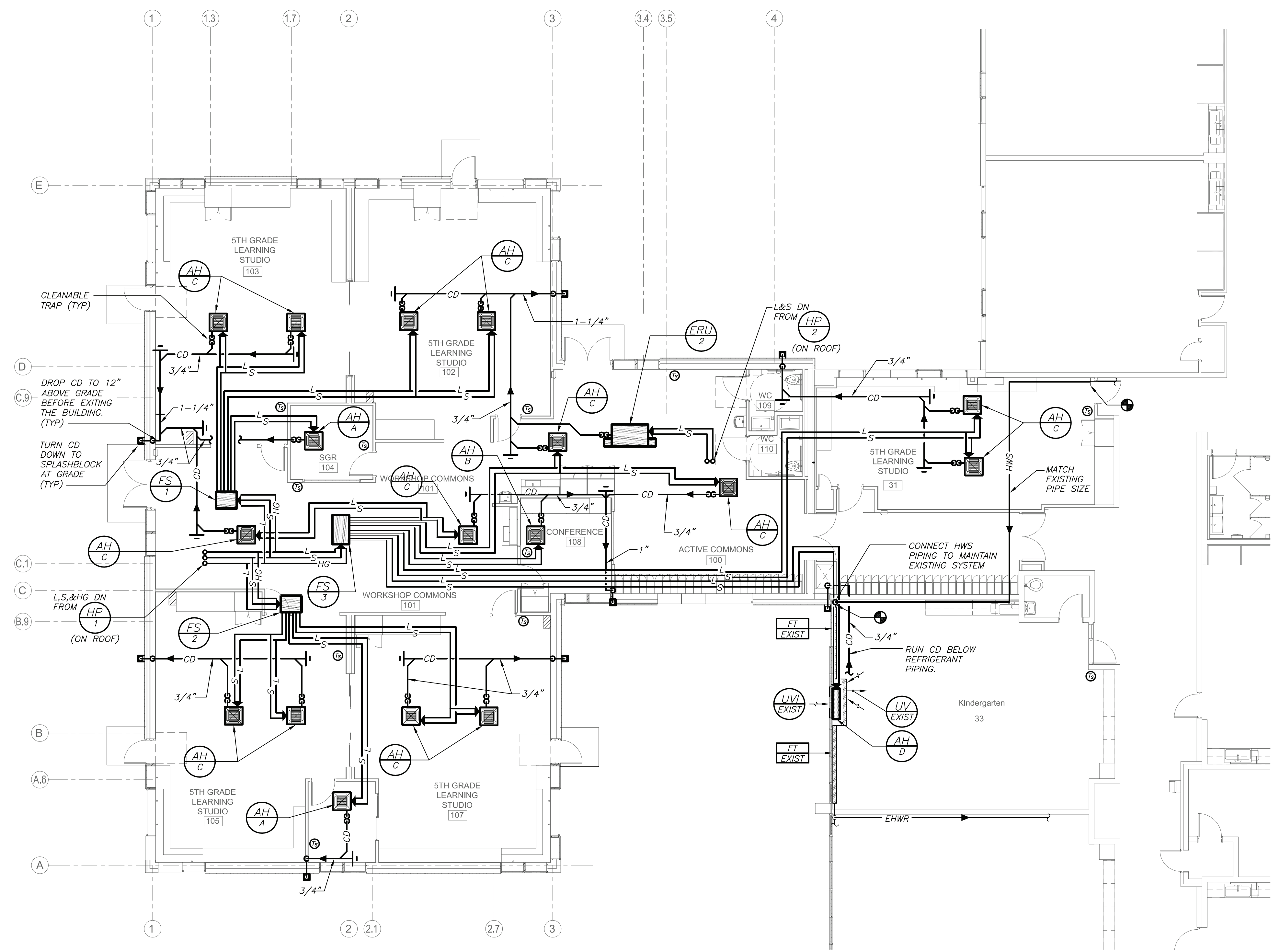
**AV Consultant**  
 CAVANAUGH TOCCI  
 327 F Boston Post Road  
 Sudbury, MA 01776-3027  
 978-443-7871

SED#: 6618-0001-0001-023

PROJECT  
**Rye City Schools**  
 555 Theodore Fremd Ave, Suite B-101  
**Osborn Elementary School**  
 10 Osborn Road, Rye NY 10580

ADDITION FIRST FLOOR  
 PIPING PLAN

SEAL & SIGNATURE | DATE: 02/12/20  
 PROJECT No: 9200  
 DRAWING BY: BGA  
 CHK BY: BGA  
 DWG No: H3-202

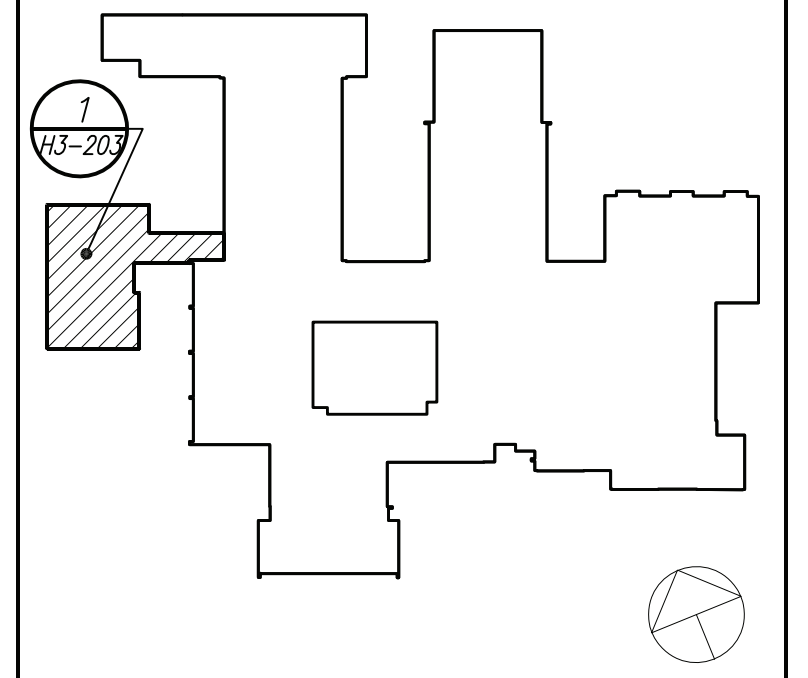


**PART FIRST FLOOR PIPING PLAN** 1  
 H3-202

- GENERAL NOTES**
- THE CONTRACTOR SHALL RETAIN THE SERVICES OF THE MANUFACTURER'S REPRESENTATIVE FOR PURPOSES OF PROVIDING REFRIGERANT PIPING SIZING.
  - ALL CONDENSATE PIPING REQUIRED TO RUN BELOW CEILING TO BE COVERED BY FINISHED SHEET METAL ENCLOSURE SIMILAR TO "STERLING" MODEL PCV. FINISH PER ARCHITECT.

BEFORE FABRICATION THIS CONTRACTOR SHALL VERIFY ALL MEASUREMENTS AND CONDITIONS ON JOB AND COORDINATE HIS WORK WITH THE WORK OF ALL OTHER CONTRACTORS

Revision Schedule		
No.	Description	Date
A	SED Submission	10/23/2020
B	ISSUED FOR BID	8/10/2021



**Geddis Architects**  
 Architecture. Planning. Interiors  
 71 Old Post Road  
 P.O. Box 1020  
 Southport, CT 06890  
 (203) 256-8700

**Fielding International**  
 Transforming Education by Design  
 259 Water Street Suite 1L  
 Warren, RI 02885 USA  
 +1 401-289-2789

**BGA**  
 BARILE GALLAGHER & ASSOCIATES  
 CONSULTING ENGINEERS  
 39 MARBLE AVE. PLEASANTVILLE, NY 10570  
 914.328.6960 GENERAL@BGA-ENG.COM WWW.BGA-ENG.COM

**Construction Manager**  
 SAVIN ENGINEERS, P.C.  
 3 Campus Drive  
 Pleasantville, NY 10570  
 914-769-3200

**Structural Engineer**  
 ODEH ENGINEERS  
 1223 Mineral Spring Ave  
 North Providence, RI 02904  
 401-724-1771

**Civil Engineer**  
 WESTON & SAMPSON  
 1 Winners Circle, Suite 130  
 Albany, NY 12205  
 518-463-4400

**Acoustic Consultant**  
 DP DESIGN  
 12 Cold Spring Street  
 Providence, RI  
 401-861-3218

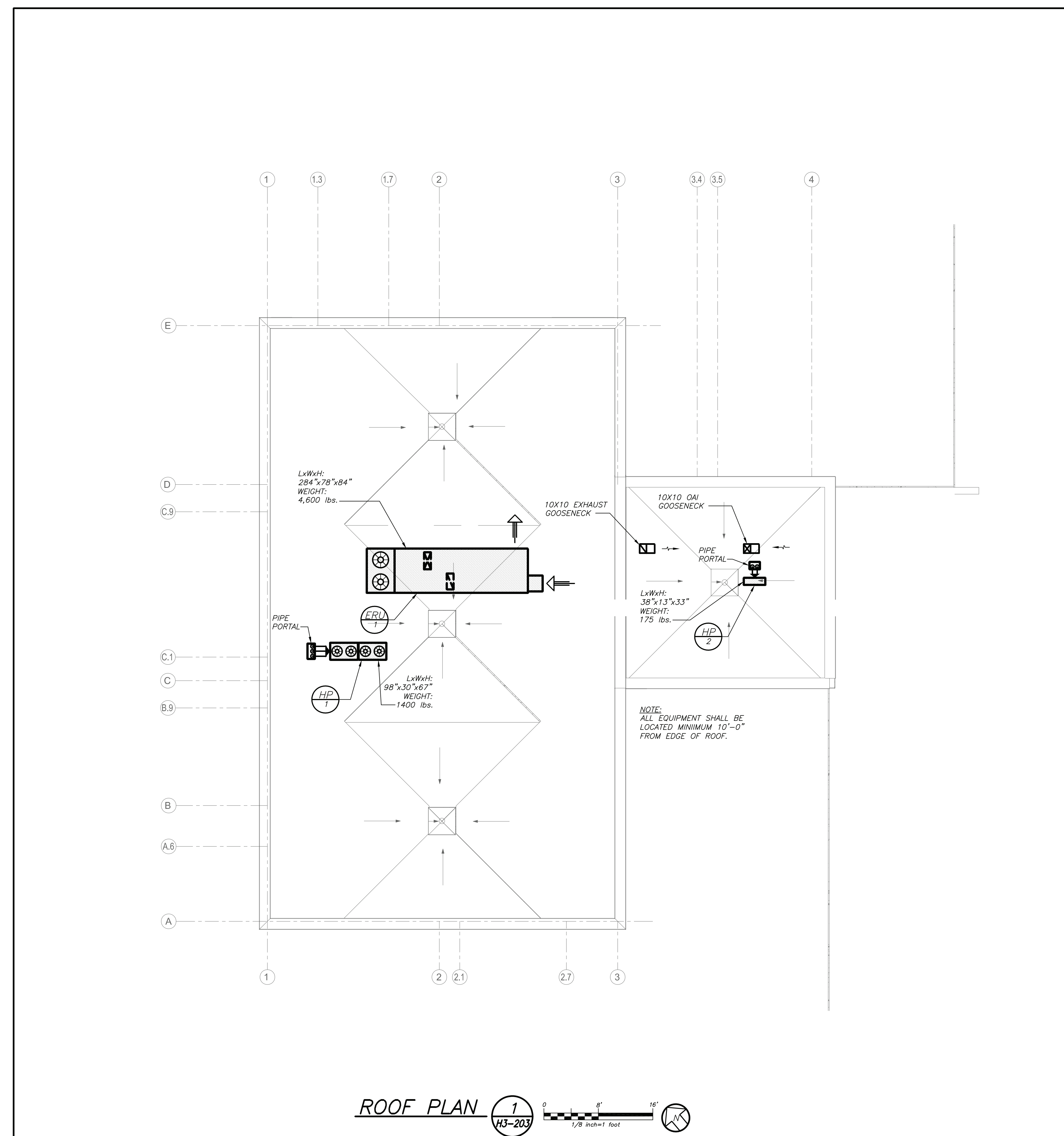
**AV Consultant**  
 CAVANAUGH TOCCI  
 327 F Boston Post Road  
 Sudbury, MA 01776-3027  
 978-443-7871

SED#: 6618-0001-0001-023

PROJECT  
**Rye City Schools**  
 555 Theodore Fremd Ave, Suite B-101  
**Osborn Elementary School**  
 10 Osborn Road, Rye NY 10580

**ADDITION ROOF PLAN**

SEAL & SIGNATURE | DATE: 02/12/20  
 PROJECT No: 9200  
 DRAWING BY: BGA  
 CHK BY: BGA  
 DWG No: H3-203



BEFORE FABRICATION THIS CONTRACTOR SHALL VERIFY ALL MEASUREMENTS AND CONDITIONS ON JOB AND COORDINATE HIS WORK WITH THE WORK OF ALL OTHER CONTRACTORS



### SCHEDULE OF ENERGY RECOVER UNITS

GENERAL DATA				SUPPLY FAN DATA			EXHAUST FAN DATA			GAS HEATING DATA				COOLING DATA				COMPRESSOR DATA		ENERGY RECOVERY DATA		FILTER DATA		PHYSICAL DATA		ELECTRICAL DATA			REMARKS	
MARK	SERVICE	MODEL NUMBER	OAI CFM	CFM	E.S.P. (\"WC)	FAN RPM	MOTOR HP	CFM	E.S.P. (\"WC)	FAN RPM	MOTOR HP	INPUT BTU/HR	OUTPUT BTU/HR	ENT. AIR TEMP. D.B. / W.B.	LVG. AIR TEMP. D.B. / W.B.	TOTAL CAP. BTU/HR	SENSIBLE CAP. BTU/HR	ENT. AIR TEMP. D.B. / W.B.	LVG. AIR TEMP. D.B. / W.B.	TONNAGE	COMP. QTY	WINTER AIR TMP. ENT. / LVG.	SUMMER AIR TMP. ENT. / LVG.	SIZE (IN.)	TYPE	WEIGHT (LBS.)	LxWxH (IN.)	MCA		MOP
EBL	ADDITION	ERP-E-03-EP-C-HR-HG-AST25	3,500	3,500	2.0	4730	7.7	3,500	2.0	2740	4.40	280,000	225,000	52	110	209,000	113,000	81/71	52/52	17.5	2	13/52	95/81	2\"/>						

**NOTES:**

- AS MANUFACTURED BY "ANNEXAIR".
- AS MANUFACTURED BY "ENERGY WALL".
- INSTALL IN ACCORDANCE WITH MANUFACTURER'S DIRECTIONS.
- BASED ON A.R.I. CERTIFIED COIL SELECTIONS; REFRIGERANT R-410A.
- PACKAGED UNIT WITH INTEGRAL FURNACE, CONDENSING AND ENERGY RECOVERY WHEEL SECTION, PROVIDE UNIT WITH V.F.D., HOT GAS BYPASS, STATIC PRESSURE CONTROLLER, VIBRATION ISOLATORS, DIFFERENTIAL ENTHALPY ECONOMIZER CONTROLS, POWERED CONVENIENCE OUTLET, LOW AMBIENT CONTROL, PHASE PROTECTION AND NON-FUSED DISCONNECT SWITCH. PROVIDE 14\"/>
- CEILING MOUNTED UNIT WITH INTEGRAL DX COIL AND ASSOCIATED OUTDOOR CONDENSING UNIT CU-2. PROVIDE LG. EVV KIT AND AHU COMMUNICATIONS KIT. PROVIDE UNIT WITH ENAMELED FINISH (COLOR TO BE DETERMINED BY ARCHITECT), EXHAUST/DEFROST CONTROLS WITH INSULATED MOTORIZED DAUX/EXHAUST DAMPERS, DAMPER POWER TERMINALS, LOW TEMPERATURE LIMIT CONTROLS, DIFFERENTIAL ENTHALPY ECONOMIZER CONTROLS, DIRTY FILTER CONTACT, DAMPER END SWITCHES, DISCONNECT SWITCHES, MERV 11 FILTERS, DX COIL, DX COIL SHALL PROVIDE BOTH HEATING AND COOLING THE VENTILATION AIR AND HAVE STAINLESS STEEL DRAIN PAN.

#### Revision Schedule

No.	Description	Date
A	SED Submission	10/23/2020
B	ISSUED FOR BID	8/10/2021

### SCHEDULE OF MINIMUM VENTILATION ROOM FLOW RATES

ROOM NAME/NUMBER	OCCUPANCY CATEGORY	A ROOM AREA (SQ.FT.)	B PEOPLE DENSITY (#/1000 SQ.FT.) / # OF FIXTURES	C PEOPLE OUTDOOR AIR FLOW RATE (CFM/PERSON)	D AREA OUTDOOR AIR FLOW RATE (CFM/SQ.FT.)	E EXHAUST AIR FLOW RATE (CFM/SQ.FT.)	F NUMBER OF PEOPLE (A+B)*1000#P	G OUTDOOR AIR FLOW RATE WITHOUT ZONE DISTRIBUTION EFFECTIVENESS FACTOR (F+G)*A+D)/CFM	H ZONE AIR DISTRIBUTION EFFECTIVENESS FACTOR	I MINIMUM ROOM VENTILATION AIR FLOW RATE G+H*CFM	J MINIMUM EXHAUST AIR FLOW RATE A+E*CFM
5th Grade Learning Studio101	CLASSROOM (AGES 9+)	600	35	10	0.12	0	21	282	0.8	353	0
Active Commons/100	CLASSROOM (AGES 9+)	650	35	10	0.12	0	23	308	0.8	385	0
Workshop Commons/101	CLASSROOM (AGES 9+)	900	35	10	0.12	0	32	428	0.8	535	0
5th Grade Learning Studio102	CLASSROOM (AGES 9+)	750	35	10	0.12	0	27	360	0.8	450	0
5th Grade Learning Studio103	CLASSROOM (AGES 9+)	750	35	10	0.12	0	27	360	0.8	450	0
SGR/104	CLASSROOM (AGES 9+)	100	35	10	0.12	0	4	52	0.8	65	0
5th Grade Learning Studio105	CLASSROOM (AGES 9+)	750	35	10	0.12	0	27	360	0.8	450	0
SGR/106	CLASSROOM (AGES 9+)	100	35	10	0.12	0	4	52	0.8	65	0
5th Grade Learning Studio107	CLASSROOM (AGES 9+)	750	35	10	0.12	0	27	360	0.8	450	0
Conference/108	CONFERENCE/MEETING	175	50	5	0.06	0	9	56	0.8	69	0
WC/109	TOILETS - PUBLIC	40	1 FIXTURES	-	-	60 CFM/FIXTURE	-	-	-	-	50
WC/110	TOILETS - PUBLIC	40	1 FIXTURES	-	-	50 CFM/FIXTURE	-	-	-	-	50

### SCHEDULE OF VRF OUTDOOR HEAT PUMP UNITS

MARK	LOCATION	SERVICE	MODEL No. ①	COOLING CAPACITY (MBH)	HEATING CAPACITY (MBH)	COMPRESSOR DATA TYPE QTY	COND. DATA QTY	ELECTRICAL DATA MCA MOP ELECTRICAL SERVICE	PHYSICAL DATA DIMENSION/WEIGHT (LxWxHxV) (LBS.)	REMARKS
HP-1	ROOFTOP	ADDITION	ARUM336DTE5	336	378	SCROLL 3	4	18.4/38.3 25/50 460/3/60	98x30x67/1400	REFER TO ②③④⑤
HP-2	ROOFTOP	②	ARUN024GSS4	24	27	DC	1	19.6 30 208/1/60	38x13x33/175	REFER TO ②③④⑤

**NOTES:**

- AS MANUFACTURED BY "LG."
- INSTALL PER MANUFACTURER'S RECOMMENDATIONS.
- BASED ON A.R.I. CERTIFIED COIL SELECTIONS; REFRIGERANT R-410A, EER 12.4/SEER 25.9/HSFP10.3.
- DESIGN AIR CONDITIONS: SUMMER: OA (94°F/75°F) RA (77°F/65°F); WINTER: OA (51°F/31°F) RA (20°F/55°F). HW: 180°F/160°F
- MOUNT ON RAILS. THREE PIPE SYSTEM. PROVIDE VIBRATION ISOLATORS, EQUIPMENT SUPPORTS, DISCONNECT SWITCH, CONVENIENCE OUTLET, LOW AMBIENT CONTROLS AND PHASE PROTECTION. DC INVERTER COMPRESSOR SPEED CONTROL BASED ON SYSTEM LOAD.
- MOUNT ON RAILS. TWO PIPE SYSTEM. PROVIDE VIBRATION ISOLATORS, EQUIPMENT SUPPORTS, CONVENIENCE OUTLET, LOW AMBIENT CONTROLS, AND DISCONNECT SWITCH. DC INVERTER COMPRESSOR SPEED CONTROL BASED ON SYSTEM LOAD.

### SCHEDULE OF VRF INDOOR UNITS

MARK	MODEL No. ①	SUPPLY FAN DATA CFM HIGH MCA MOCPELECTRICAL SERVICE	TOTAL COOL/HEAT MBH	DIMENSION/WEIGHT W D H (IN.) (IN.) (IN.) LBS	REMARKS
AI-1	ARNU073TRD4	265 0.25 15 208/1/60	7.5/8.5	25 25 10 35	REFER TO ②③④⑤
AI-2	ARNU153TDQ4	388	15.4/17.1	25 25 12 40	
AI-3	ARNU183TDQ4	396	19.1/21.5	25 25 12 40	
AI-4	ARNU303SV44	812 0.65	30.0/32.0	47 11 14 50	
AI-5	PRHR033A	N/A 0.17	N/A	31 26 9 37	REFER TO ②③
AI-6	PRHR033A	0.17		31 26 9 37	
AI-7	PRHR063A	0.27		31 26 9 40	

**NOTES:**

- AS MANUFACTURED BY "LG."
- INSTALL PER MANUFACTURER'S RECOMMENDATIONS.
- BASED ON A.R.I. CERTIFIED COIL SELECTIONS; REFRIGERANT R-410A
- PROVIDE CHECK VALVE, ANTI SWEAT SLEEVE AND AUTO SHUTDOWN OVERFLOW SWITCH
- PROVIDE MOUNTING HARDWARE, VIBRATION ISOLATORS, DISCONNECT AND HARDWIRED REMOTE WALL MOUNTED CONTROLLER/THERMOSTAT. WHERE MULTIPLE UNITS TIE INTO ONE ZONE CONTROLLER, PROVIDE WIRED REMOTE GROUP CONTROL CABLE ASSEMBLY PC20WR1 AS REQUIRED. TIE INTO BMS.

### SCHEDULE OF REGISTERS AND DIFFUSERS

MARK	TYPE	SERVICE	MODEL No. ①	NOMINAL FACE SIZE	DIRECTION DISCHARGE	FINISH	REMARKS
A	CEILING DIFFUSER	SUPPLY	SCD	12X12/24X24	FOUR-WAY	PER ARCH.	REFER TO ②③④⑤⑥⑧
B	CEILING RETURN REGISTER	RETURN/EXHAUST	635	VARIES	-	PER ARCH.	REFER TO ②③④⑤⑥⑧⑨
C	LINEAR	SUPPLY	SDS-50 2-SLOT	48"	TWO-WAY	PER ARCH.	REFER TO ②③④⑤⑥⑦⑧

**NOTES:**

- AS MANUFACTURED BY "PRICE".
- INSTALL PER MANUFACTURER'S RECOMMENDATIONS.
- OPPOSED BLADE DAMPER, DOUBLE DEFLECTION, 1/2" BLADE SPACING.
- PROVIDE CABLE OPERATED DAMPERS IN UN-ACCESSIBLE AREAS.
- AIR OUTLET TO BE OF STEEL CONSTRUCTION.
- COORDINATE AIR OUTLET TYPE WITH CEILING CONSTRUCTION.
- PROVIDE INSULATED PLENUM.

⑤ SUPPLY NECK SIZE PER CFM RANGE (NOT TO EXCEED 700 fpm)						⑥ RETURN NECK SIZE PER CFM RANGE (NOT TO EXCEED 675 fpm)					
50	100	246	381	551	751	50	150	250	400	600	800
135	245	380	550	750	860	145	249	399	599	799	1099
6"	8"	10"	12"	14"	15"	6x6	8x8	10x10	12x12	14x14	16x16

### SCHEDULE OF EXHAUST FANS

MARK	SERVICE	LOCATION	TYPE	MODEL No. ①	CFM	EXT. S.P. IN H <sub>2</sub> O	RPM	HP	ELECTRICAL SERVICE	SIZE	WEIGHT (LBS.)	REMARKS
EF-1	JC-37A	ROOFTOP	CENTRIFUGAL	G-06-VG	100	0.35	1725	1/15	120/1/60	19"	25	REFER TO ②③

**NOTES:**

- AS MANUFACTURED BY "GREENHECK."
- INSTALL PER MANUFACTURER'S RECOMMENDATIONS.
- PROVIDE DISCONNECT SWITCH, BACKDRAFT DAMPER, VIBRATION ISOLATORS, SPEED CONTROL, ROOF CURB AND NAMEPLATE IDENTIFYING FAN MARK, MODEL NO., CFM, RPM, HP, AND ELECTRICAL SERVICE.

BEFORE FABRICATION THIS CONTRACTOR SHALL VERIFY ALL MEASUREMENTS AND CONDITIONS ON JOB AND COORDINATE HIS WORK WITH THE WORK OF ALL OTHER CONTRACTORS

**Geddis Architects**

Architecture. Planning. Interiors

71 Old Post Road  
P.O. Box 1020  
Southport, CT 06890  
(203) 256-8700

**Fielding International**

Transforming Education by Design

259 Water Street Suite 1L  
Warren, RI 02885 USA  
+1 401-289-2789

**BGA**

BARILE GALLAGHER & ASSOCIATES

CONSULTING ENGINEERS  
39 MARBLE AVE. PLEASANTVILLE, NY 10570  
914.328.6900 GENERAL@BGA-ENG.COM www.BGA-ENG.COM

Construction Manager  
**SAVIN ENGINEERS, P.C.**  
3 Campus Drive  
Pleasantville, NY 10570  
914-769-3200

Structural Engineer  
**ODEH ENGINEERS**  
1223 Mineral Spring Ave  
North Providence, RI 02904  
401-724-1771

Civil Engineer  
**WESTON & SAMPSON**  
1 Winners Circle, Suite 130  
Albany, NY 12205  
518-463-4400

Acoustic Consultant  
**DP DESIGN**  
12 Cold Spring Street  
Providence, RI  
401-861-3218

AV Consultant  
**CAVANAUGH TOCCI**  
327 F Boston Post Road  
Sudbury, MA 01776-3027  
978-443-7871

**SED#: 6618-0001-0001-023**

PROJECT

**Rye City Schools**  
555 Theodore Fremd Ave, Suite B-101

**Osborn Elementary School**

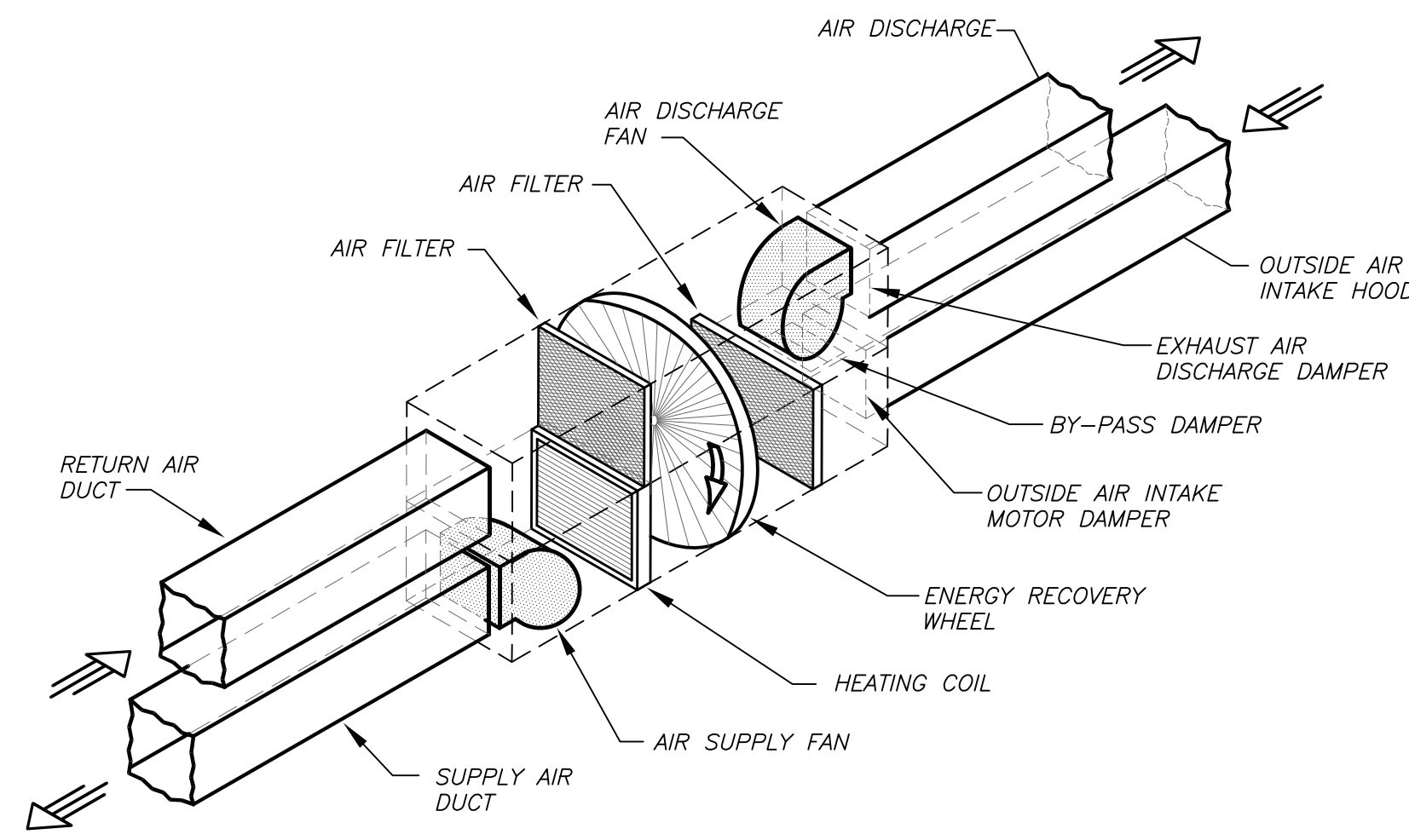
10 Osborn Road, Rye NY 10580

SCHEDULES

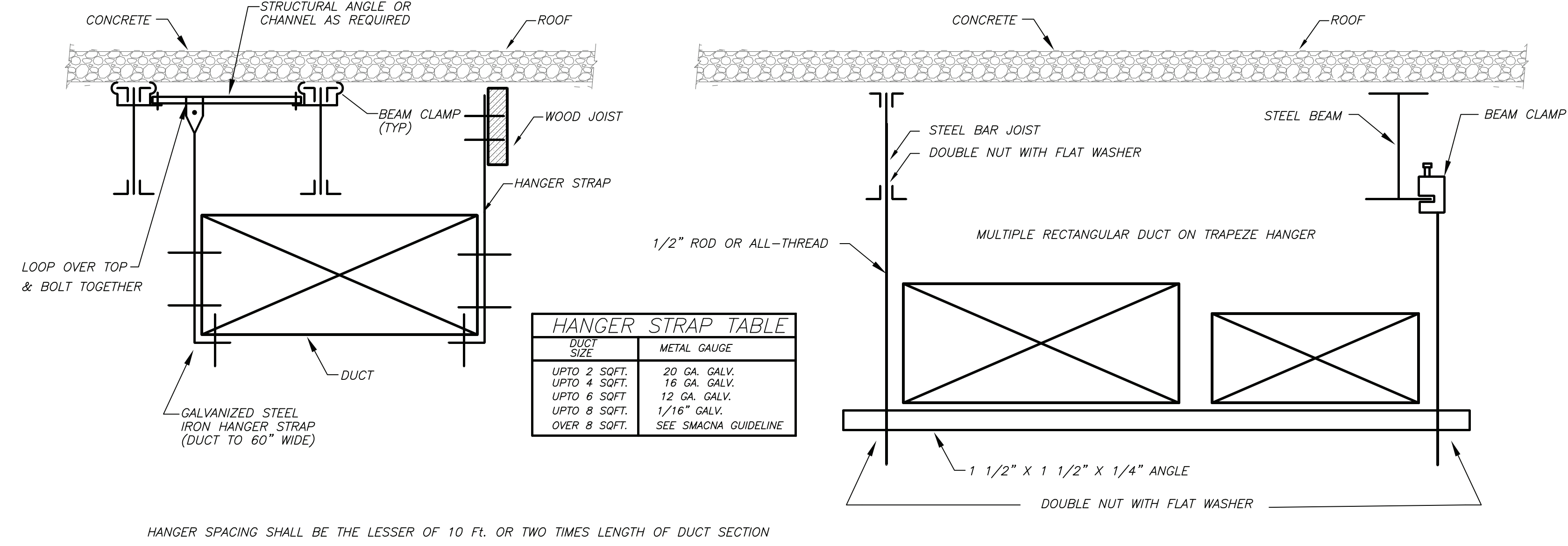
SEAL & SIGNATURE \_\_\_\_\_ DATE: 02/12/20

PROJECT No: 9200  
DRAWING BY: BGA  
CHK BY: BGA  
DWG No:  
**H3-301**



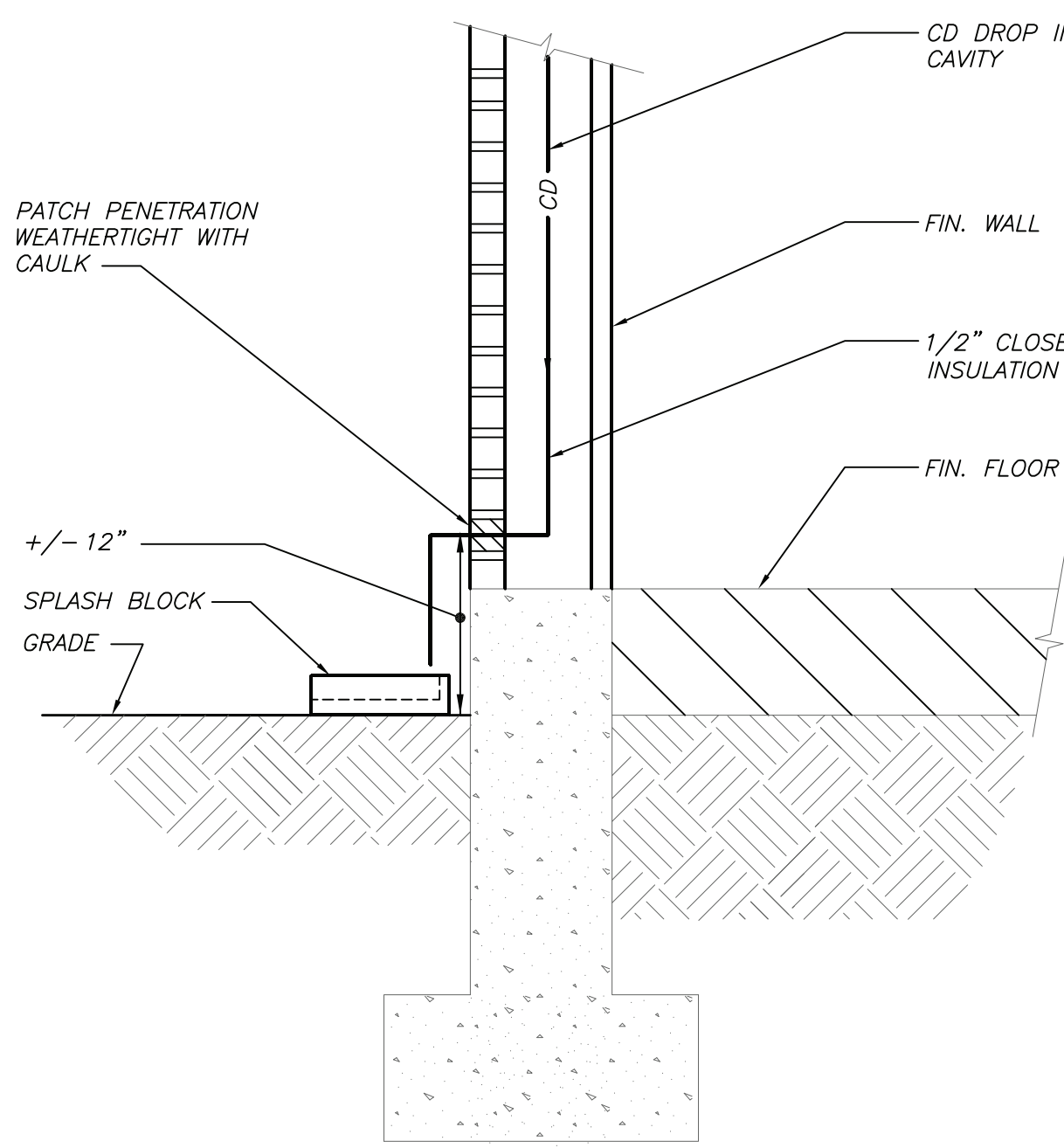


**ISOMETRIC OF HORIZONTAL MOUNTED ENERGY RECOVERY AIR HANDLING UNIT DETAIL** 4 NO SCALE  
H3-401

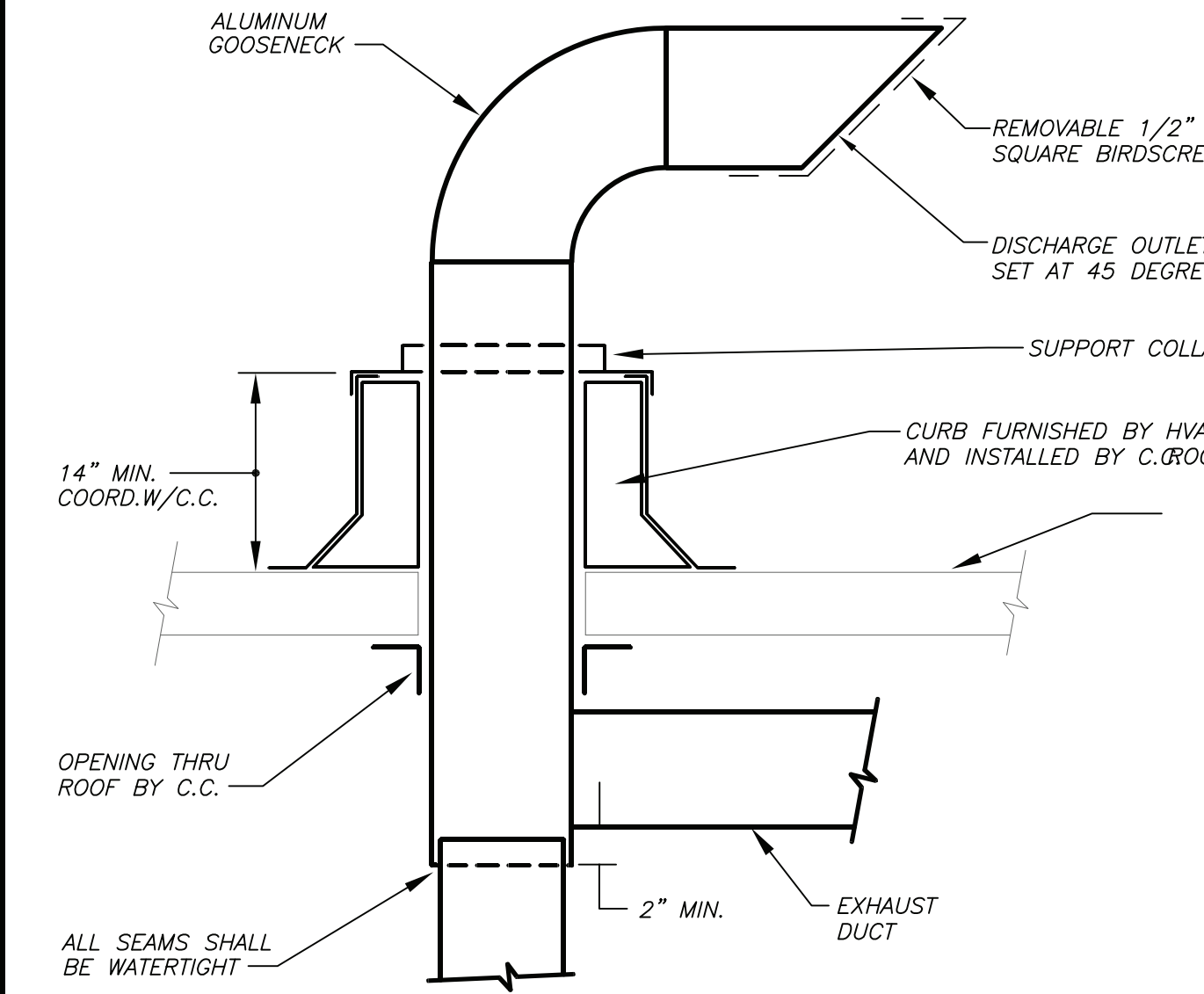


HANGER STRAP TABLE	
DUCT SIZE	METAL GAUGE
UPTO 2 SOFT.	20 GA. GALV.
UPTO 4 SOFT.	18 GA. GALV.
UPTO 6 SOFT.	12 GA. GALV.
UPTO 8 SOFT.	1/16" GALV.
OVER 8 SOFT.	SEE SHACMA GUIDELINE

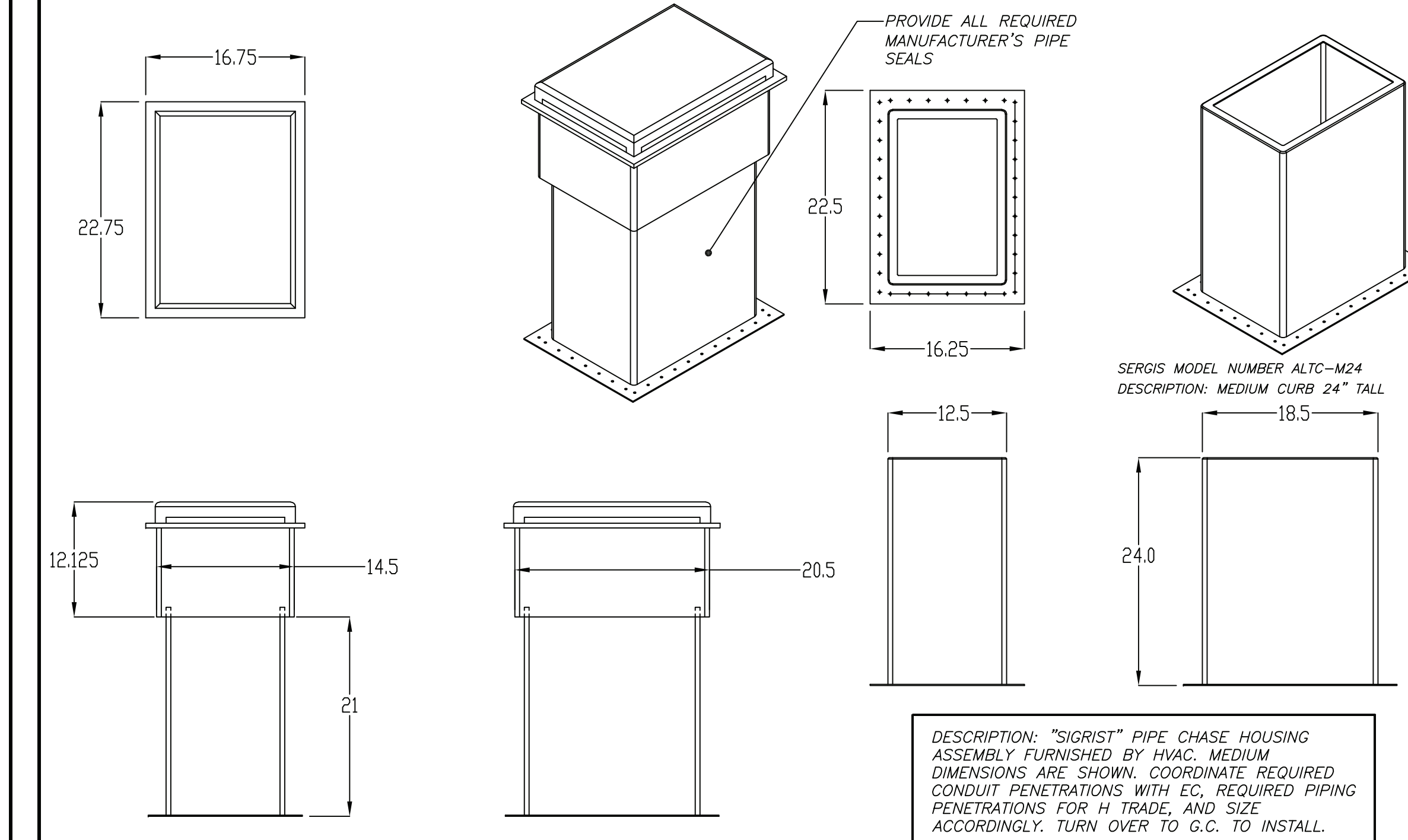
**DUCT SUPPORT DETAIL** 1 NO SCALE  
H3-401



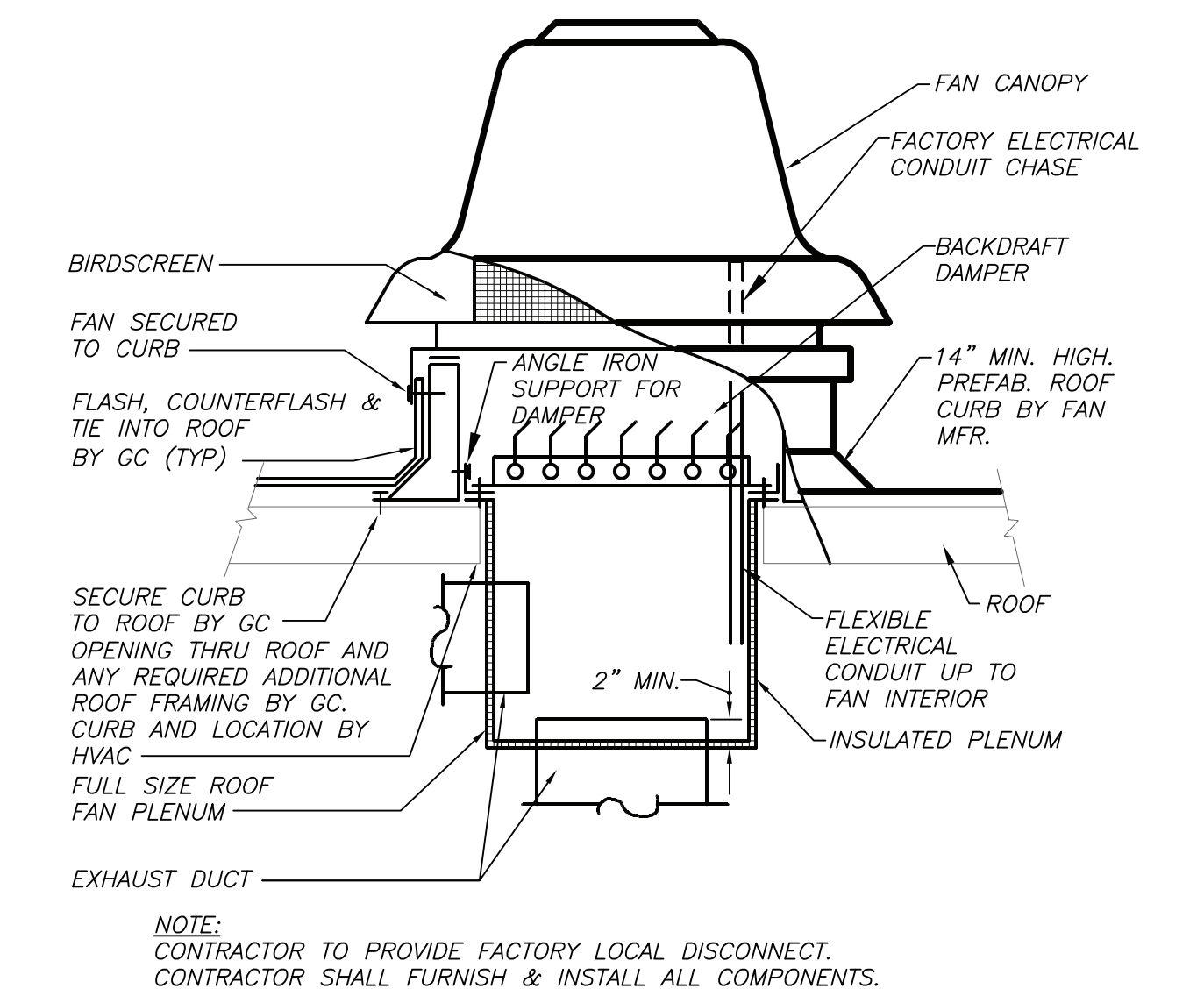
**CONDENSATE DRAIN THROUGH EXTERIOR WALL DETAIL** 8 NO SCALE  
H3-401



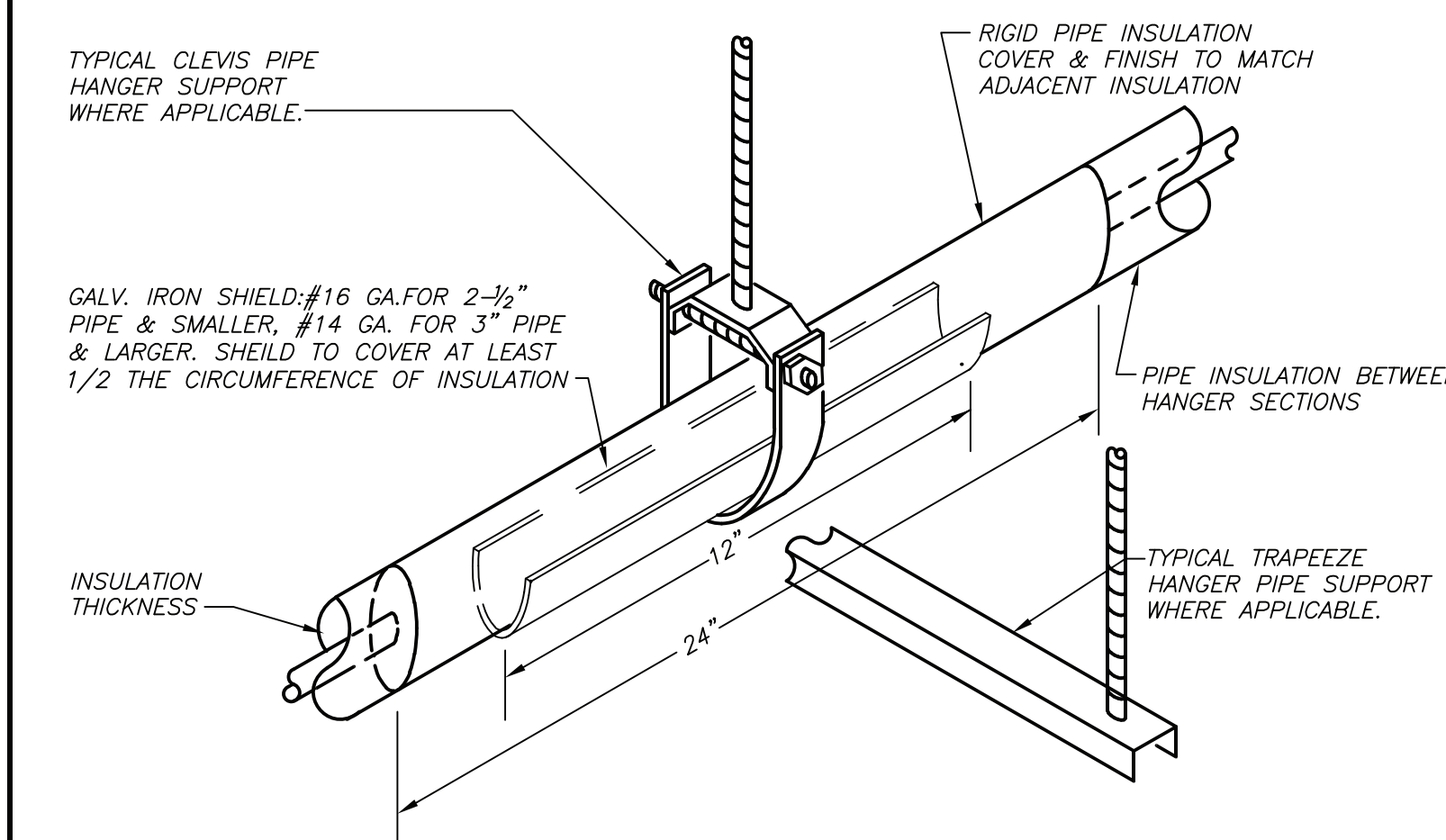
**GOOSENECK DETAIL** 5 NO SCALE  
H3-401



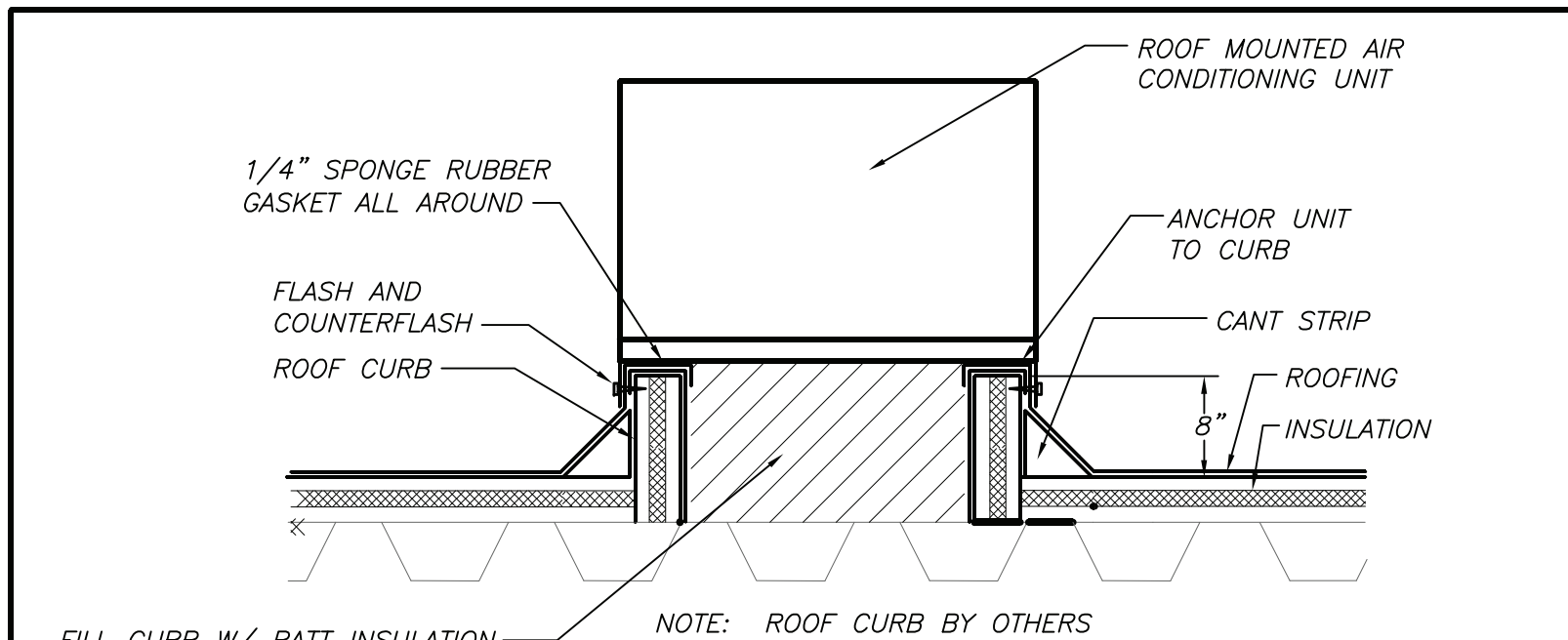
**PIPING ROOF PORTAL DETAIL** 2 NO SCALE  
H3-401



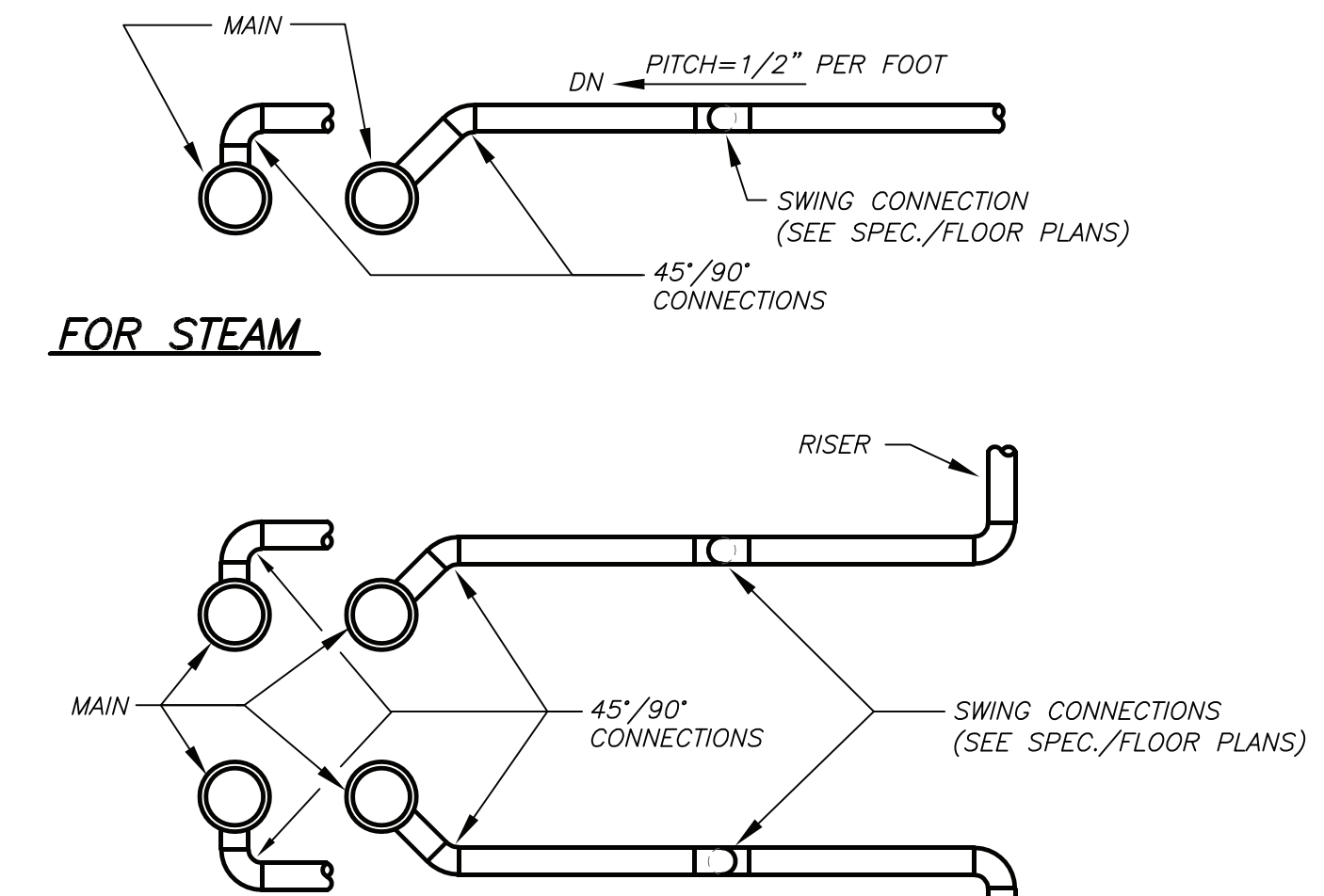
**ROOF EXHAUST FAN DETAIL** 9 NO SCALE  
H-401



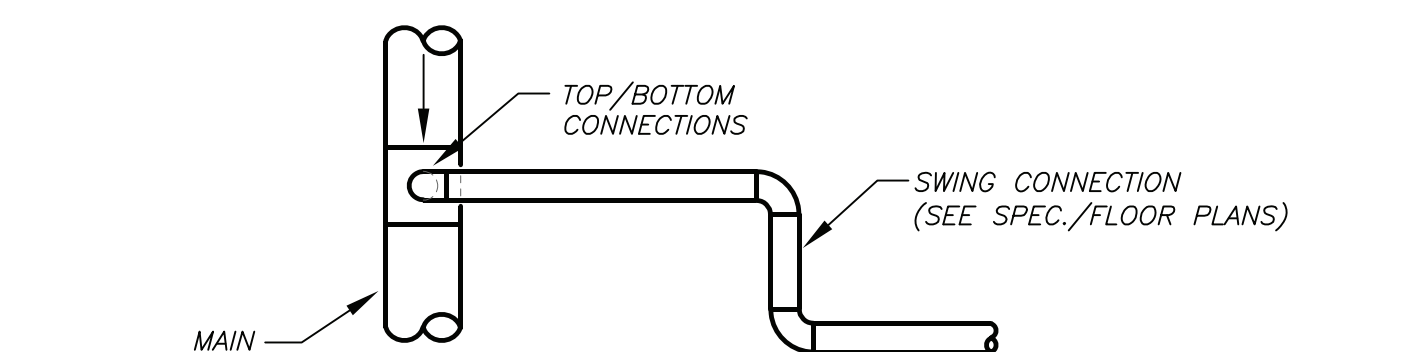
**INSULATED PIPE HANGER DETAIL** 6 NO SCALE  
H3-401



**ROOF CURB DETAIL** 7 NO SCALE  
H3-401



**ELEVATIONS**

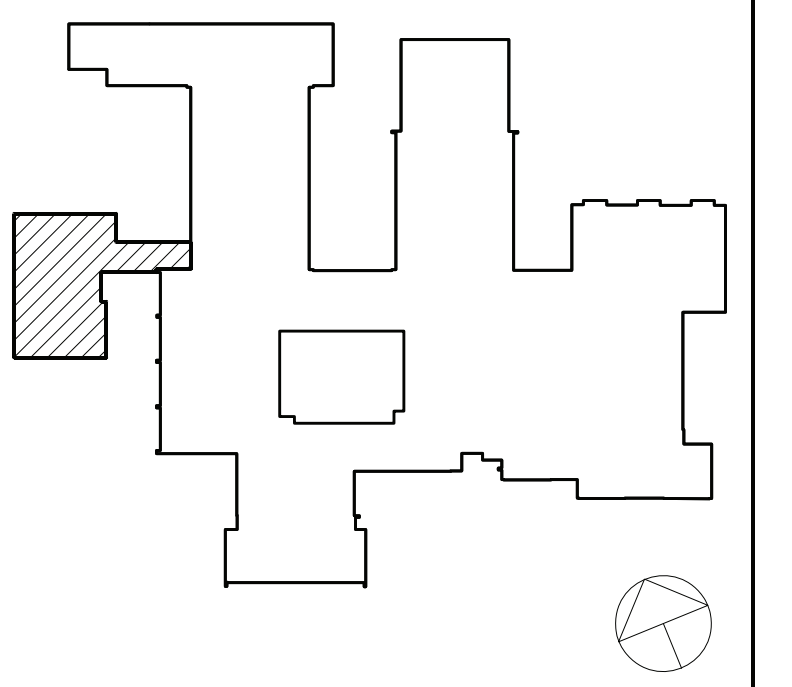


**DETAIL OF PIPING BRANCH CONNECTION** 3 NO SCALE  
H3-401

BEFORE FABRICATION THIS CONTRACTOR SHALL VERIFY ALL MEASUREMENTS AND CONDITIONS ON JOB AND COORDINATE HIS WORK WITH THE WORK OF ALL OTHER CONTRACTORS

DBE: TAB: Layout1 - Y:\RYE CITY SD\RYE CSD - 2019 Bond - Phase 2A Osborn Addition (2030.00)\Drawings\HVAC\203000H3-401-OES.dwg - DATE: Aug 06, 2021 - 2:30pm

Revision Schedule		
No.	Description	Date
A	SED Submission	10/23/2020
B	ISSUED FOR BID	8/10/2021



**Geddis Architects**

Architecture. Planning. Interiors

71 Old Post Road  
P.O. Box 1020  
Southport, CT 06890  
(203) 256-8700

**Fielding International**

Transforming Education by Design

259 Water Street Suite 1L  
Warren, RI 02885 USA  
+1 401-289-2789

**bga**

BARILE GALLAGHER & ASSOCIATES

CONSULTING ENGINEERS  
39 MARBLE AVE. PLEASANTVILLE, NY 10570  
914.328.9260 GENERAL@BGA-ENG.COM WWW.BGA-ENG.COM

Construction Manager  
SAVIN ENGINEERS, P.C.  
3 Campus Drive  
Pleasantville, NY 10570  
914-769-3200

Structural Engineer  
ODEH ENGINEERS  
1223 Mineral Spring Ave  
North Providence, RI 02904  
401-724-1771

Civil Engineer  
WESTON & SAMPSON  
1 Winners Circle, Suite 130  
Albany, NY 12205  
518-463-4400

Acoustic Consultant  
DP DESIGN  
12 Cold Spring Street  
Providence, RI  
401-861-3218

AV Consultant  
CAVANAUGH TOCCI  
327 F Boston Post Road  
Sudbury, MA 01776-3027  
978-443-7871

SED#: 6618-0001-0001-023

PROJECT

Rye City Schools  
555 Theodore Fremd Ave, Suite B-101  
Osborn Elementary School

10 Osborn Road, Rye NY 10580

DETAILS

SEAL & SIGNATURE: [Signature] DATE: 02/12/20  
PROJECT No: 9200  
DRAWING BY: BGA  
CHK BY: BGA  
DWG No: H3-401