

JOSEPH G. CAPUTO COMMUNITY  
CENTER - LOCATION PLAN  
**95 BROADWAY**

# VILLAGE OF OSSINING OSSINING, NEW YORK

MAYOR - RIKA LEVIN  
TRUSTEES - MANUEL R. QUEZADA,  
ROBERT M. FRITSCHKE, OMAR LOPEZ, DANA WHITE  
  
VILLAGE MANAGER KAREN D'ATTORE

**CONTRACT NO. DPW-21-03**

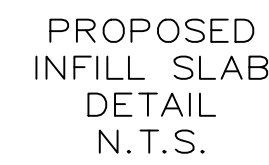
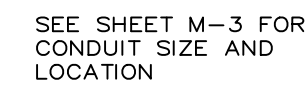
## REPLACEMENT OF CHILLER AT JOSEPH A. CAPUTO COMMUNITY CENTER

LIST OF DRAWINGS

<u>SHEET NO.</u>	<u>TITLE</u>
T-1	TITLE SHEET
S-1	CIVIL SITE PLAN AND SLAB PLAN
S-2	CIVIL DETAILS
S-3	EROSION CONTROL PLAN
M-1	MECHANICAL GENERAL NOTES AND LEGEND
M-2	MECHANICAL DETAILS AND SCHEDULES
M-3	MECHANICAL SITE PLAN
M-4	MECHANICAL LOWER LEVEL PLAN
E-1	ELECTRICAL NOTES, DETAILS, LEGEND AND DIAGRAM
E-2	ELECTRICAL SITE PLAN AND DETAILS

TO THE BEST OF MY KNOWLEDGE AND PROFESSIONAL JUDGEMENT, THESE PLANS & SPECIFICATIONS ARE IN COMPLIANCE WITH THE ENERGY CONSERVATION CONSTRUCTION CODE OF NEW YORK STATE					 <b>LYNSTAAR</b> ENGINEERING, P.C. CIVIL - PLUMBING - ELECTRICAL - MECHANICAL 12 Water Street, Suite 202, White Plains, New York 10601 914-741-1290 (tel) 914-741-1253 (fax) www.lynstaar.com		PROJECT NO. 2105	
							SCALE AS NOTED	
							DATE 11/03/2021	
							DRAWN BY BG	
NO ALTERATION PERMITTED HEREON EXCEPT AS PROVIDED UNDER SECTION 7209 SUBDIVISION 2 OF THE NEW YORK STATE EDUCATION LAW.							REPLACEMENT OF CHILLER AT JOSEPH G. CAPUTO COMMUNITY CENTER	
							CHECKED BY JGD	
							DRAWING NO.	
							T-1	
ONLY COPIES FROM THE ORIGINAL OF THIS DRAWING THAT ARE MARKED WITH THE ORIGINAL SEAL AND SIGNATURE OF THE ENGINEER SHALL BE CONSIDERED AS TRUE VALID COPIES.					SHEET TITLE TITLE SHEET		SHEET NO. 1 of 10	
	NO.	DATE	REVISION	BY				





SCALE: 1"=20'



LOCATION PLAN

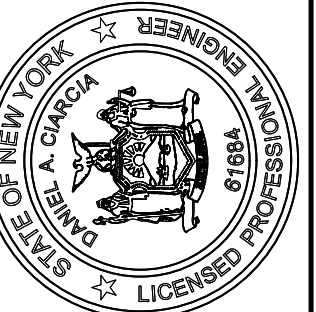


SCALE: N.T.S.



UNAUTHORIZED ALTERATIONS OR ADDITIONS TO THIS  
DRAWING IS A VIOLATION OF SECTION 7209 (2) OF THE  
NEW YORK STATE EDUCATION LAW.

3	
4	
4	
3	
2	
1 REV. DATE: 10/7/21	
ORIGINAL DATE: 10/1/2021	

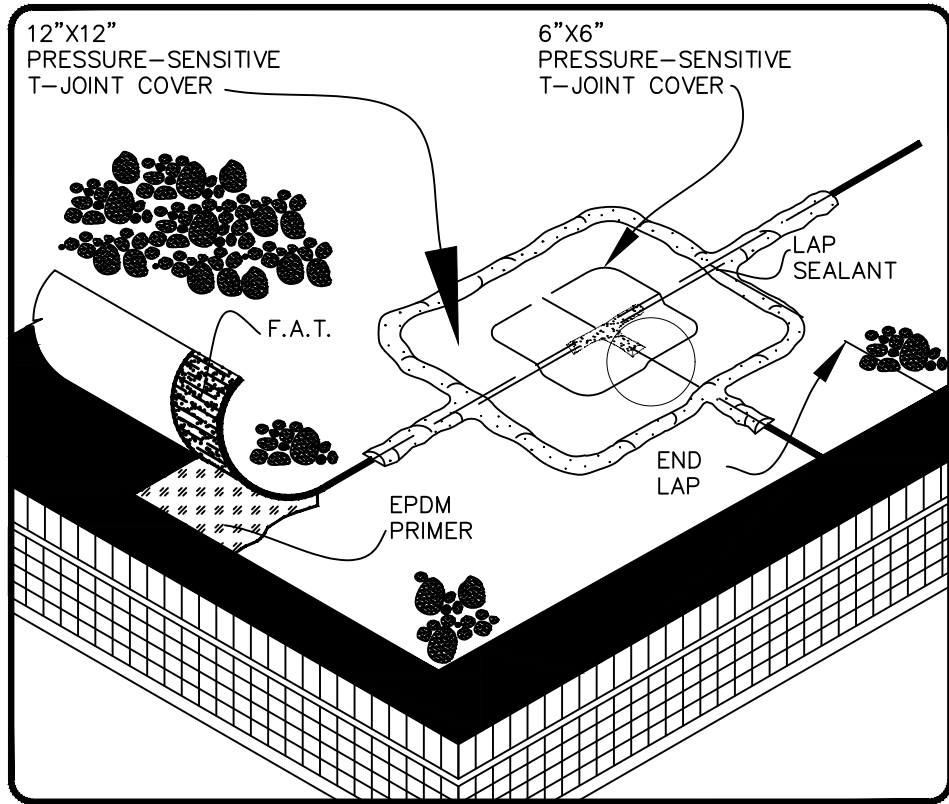
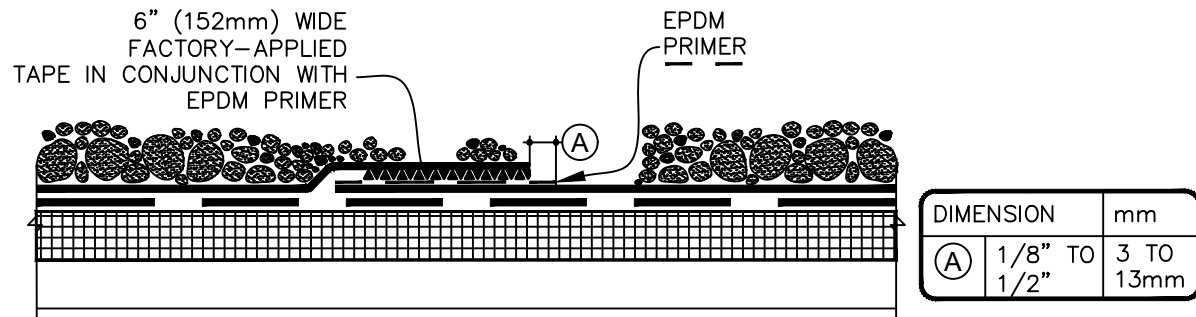


**CIARCIA ENGINEERING, P.C.**  
360 UNDERHILL AVENUE  
YORKTOWN HEIGHTS, NY 10598  
(914) 245-0123

# CIVIL SITE PLAN & SLAB PLAN

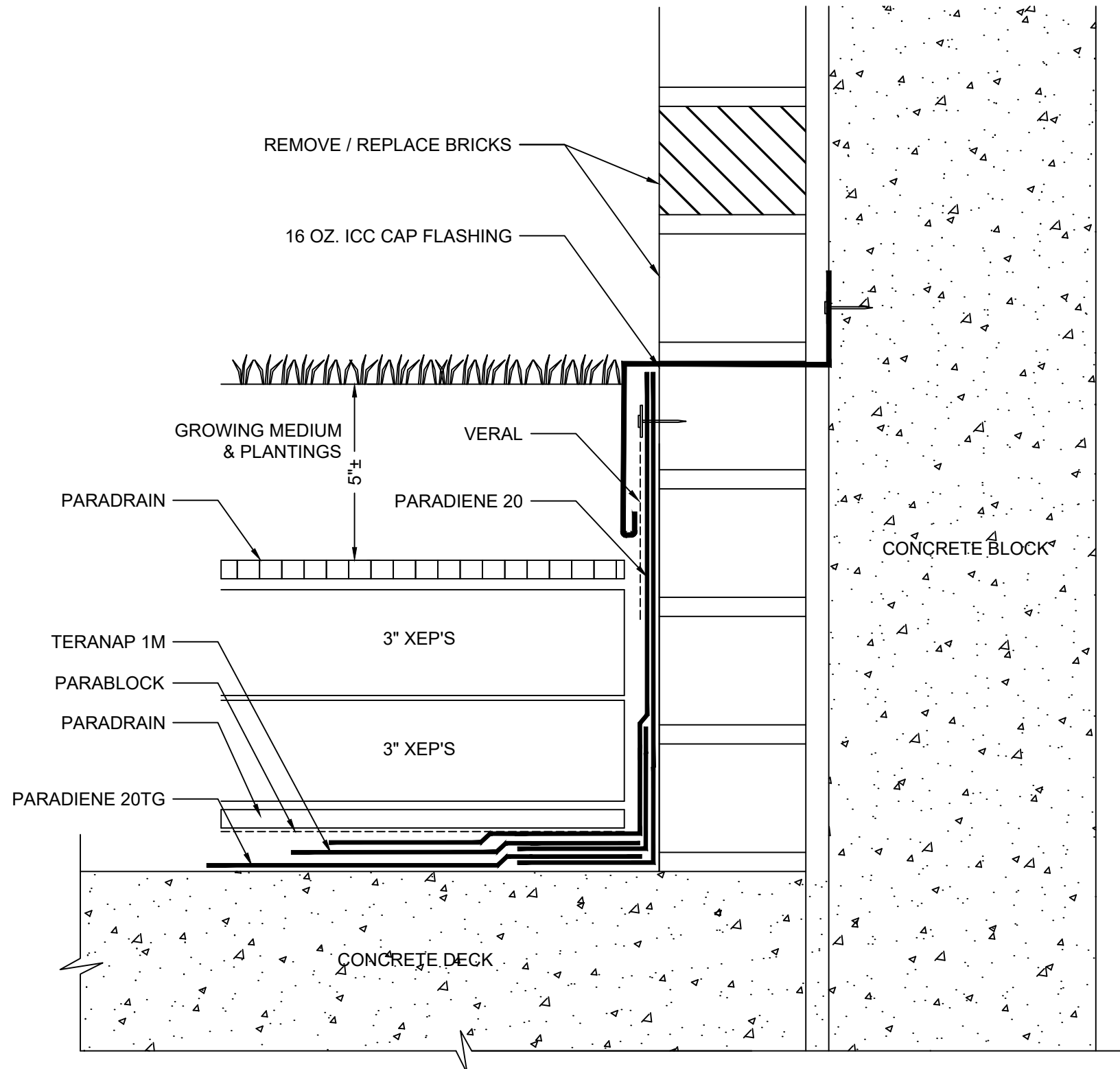
REPLACEMENT OF CHILLER AT  
JOSEPH G. CAPUTO  
COMMUNITY CENTER  
PREPARED FOR  
VILLAGE OF OSSINING



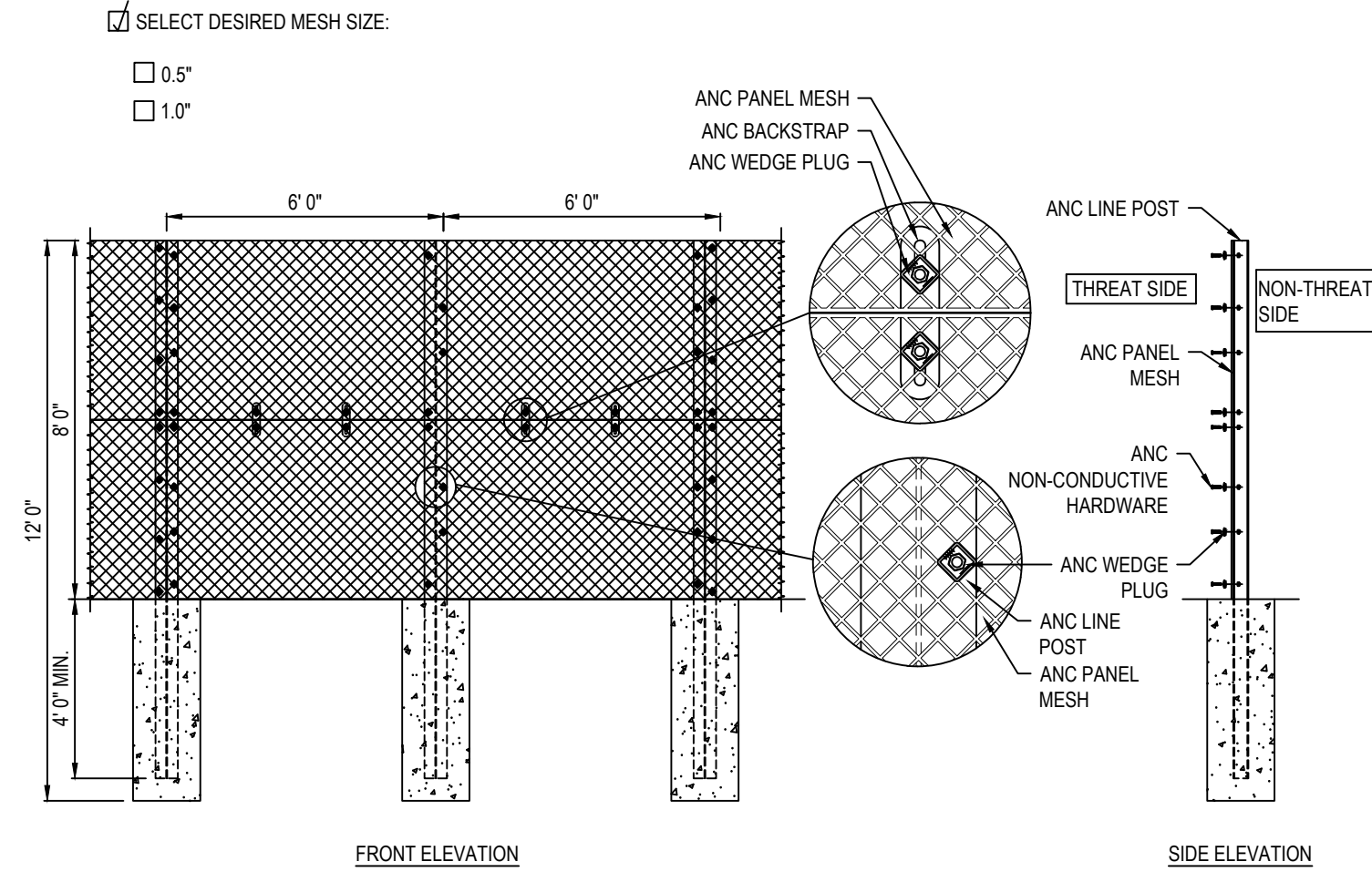


- NOTES:
- ALL SPLICE INTERSECTIONS MUST BE OVERLAID WITH TWO LAYERS OF PRESSURE-SENSITIVE ELASTOFORM FLASHING.
  - APPLY LAP SEALANT ALONG THE LEADING EDGE OF THE MEMBRANE SPLICE COVERING 1/2" (13mm) IN ALL DIRECTIONS FROM THE SPLICE INTERSECTION AND OVERLAY WITH A 6"x6" (152x152mm) T-JOINT COVER. A SECOND LAYER OF 12"x12" (305x305mm) PRESSURE-SENSITIVE T-JOINT COVER IS REQUIRED.
  - BOTH LAYERS SHALL BE CENTERED OVER THE SPLICE INTERSECTION AND SEALED WITH CONTINUOUS LAP SEALANT.

MEMBRANE SPLICE  
(25 / 30 YEAR WARRANTIES)

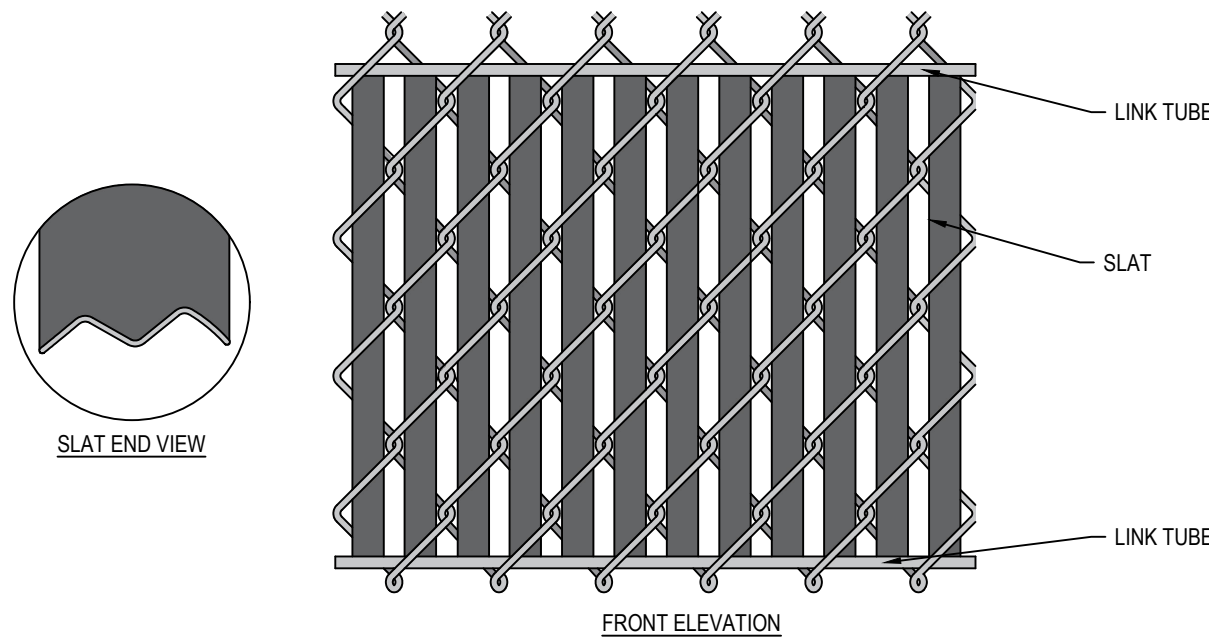


WALL FLASHING  
N.T.S.

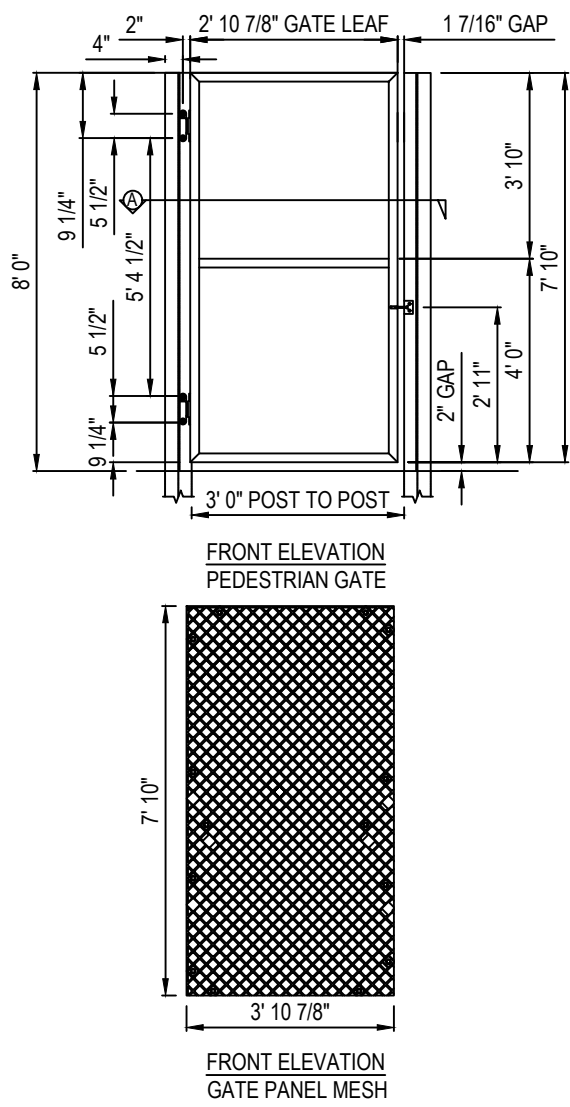


- MANUFACTURER NOTES
- CONCRETE FOUNDATION TO BE DETERMINED BY OTHERS.  
MIN. 6" COVER BETWEEN ANC POST AND SOIL INTERFACE IN ALL DIRECTIONS.

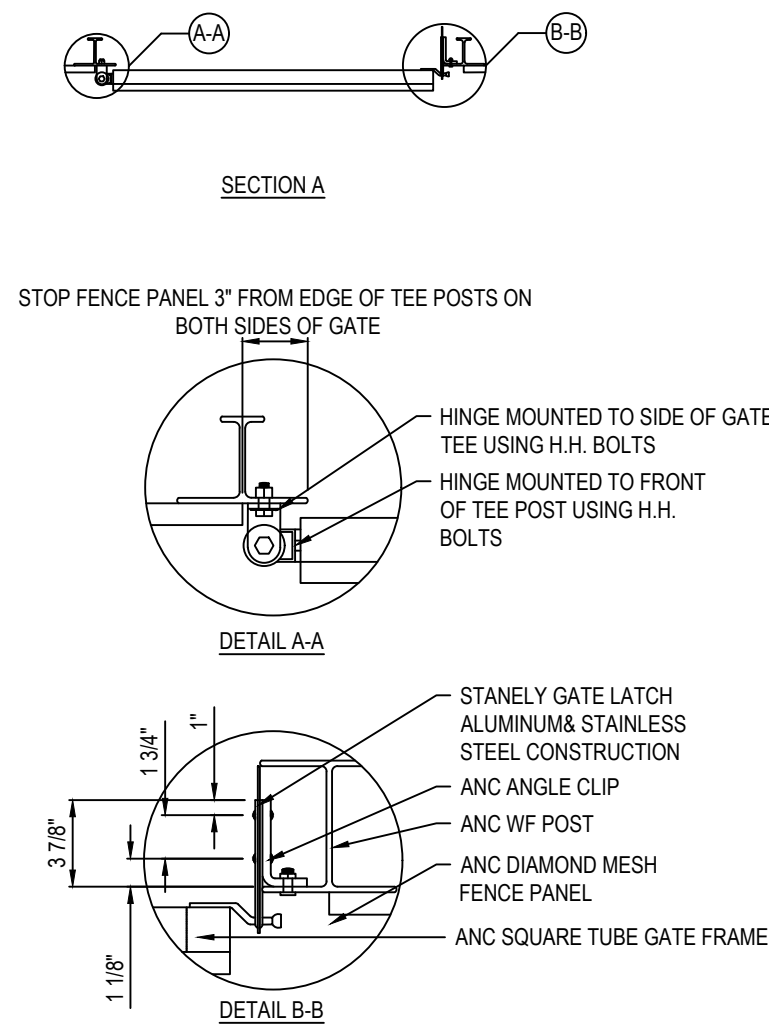
8' TALL, PANEL SYSTEM



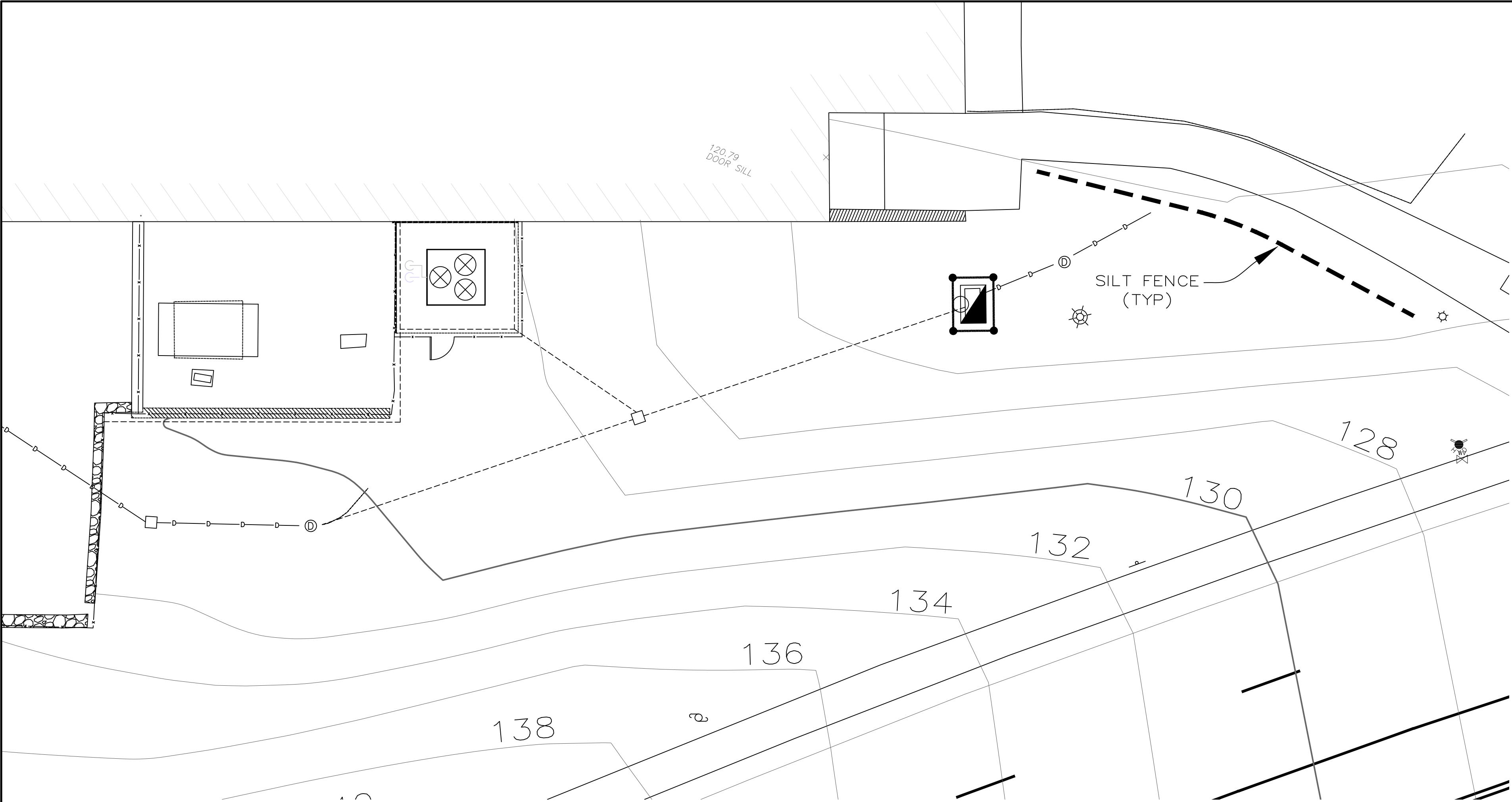
SLAT SYSTEM



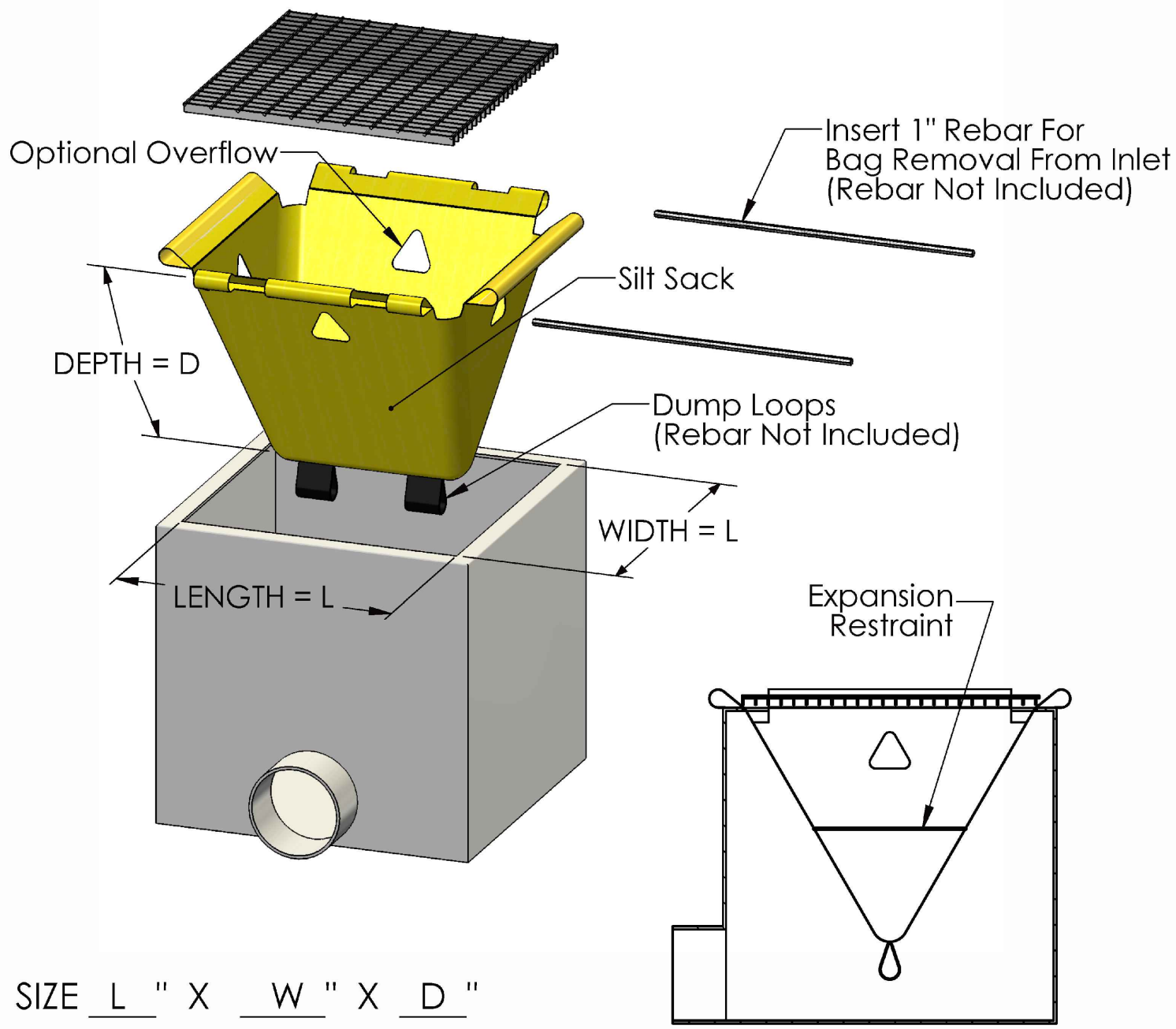
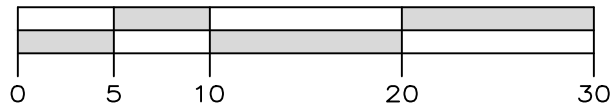
PEDESTRIAN GATE







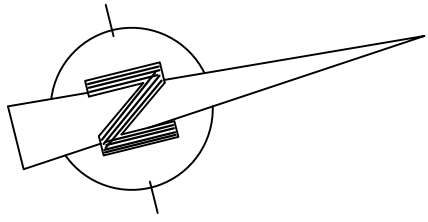
SCALE: 1"=10'



SILT SACK CATCH  
BASIN PROTECTION

EROSION CONTROL NOTES:

1. EROSION CONTROL MEASURES SHALL BE INSTALLED PRIOR TO THE START OF CONSTRUCTION AND MAINTAINED IN EFFECTIVE CONDITION THROUGHOUT THE CONSTRUCTION PERIOD.
2. ALL EROSION AND SEDIMENTATION CONTROL MEASURES AND PROCEDURES SHALL COMPLY WITH THE STANDARDS AND SPECIFICATIONS CONTAINED IN THE DOCUMENT ENTITLED "NEW YORK STATE STANDARDS AND SPECIFICATIONS FOR EROSION AND SEDIMENT CONTROL."
3. PRIOR TO ANY EXCAVATION, SILT FENCE SHALL BE INSTALLED AT THE APPROPRIATE LOCATIONS NOTED ON EROSION CONTROL PLAN. SILT FENCING SHALL BE INSTALLED AS DIRECTED BY THE OWNER'S REPRESENTATIVE IN THE FIELD AND INSTALLED AS PER THE INSTRUCTIONS OF THE MANUFACTURER. ADDITIONAL SILT FENCE MAY BE PLACED BY THE OWNER'S REPRESENTATIVE IN THE FIELD. SILT FENCING SHALL BE MAINTAINED IN OPERABLE CONDITION AND SHALL NOT BE REMOVED UNTIL DISTURBED AREAS ARE THOROUGHLY STABILIZED.
4. IMMEDIATELY TOPSOIL & SEED WITH A MIXTURE OF PERENNIAL RYE GRASS, ANNUAL RYE GRASS AND WINTER RYE AND MULCH WITH 6" OF HAY ALL FINISHED SLOPES AND ALL ROUGH CUT SLOPES TO REMAIN OPEN FOR EXTENDED PERIODS.
5. ALL SLOPES CONSTRUCTED WITH FILL MATERIAL AND ALL SLOPES WITH GRADE 3:1 OR STEEPER SHALL BE TOPSOILED, SEEDED, MULCHED AND STABILIZED WITH STAKED TOBACCO NETTING, UNLESS OTHERWISE NOTED. ALL AREAS OF DISTURBED SOIL SHALL BE STABILIZED.
6. IN ADDITION TO ALL SPECIFIED AND LOCATED EROSION CONTROL DEVICES, THE CONTRACTOR SHALL TAKE ALL STEPS PRUDENT AND NECESSARY TO STABILIZE THE SITE AT ALL TIMES.
7. DO NOT STOCKPILE MATERIALS ON STEEP SLOPES, IN DRAINAGE SWALES OR IN WETLAND AREAS. SURROUND ALL STOCKPILE AREAS WITH STAKED HAYBALES OR SILT SCREEN MATERIALS.
8. UTILITY LINE EXCAVATED MATERIAL SHALL BE TEMPORARILY STOCKPILED ON HIGH SIDE OF EXCAVATION SO RUNOFF IS DIRECTED AWAY FROM TRENCH. AFTER BACK-FILLING, AREA IS TO BE TOPSOILED, SEEDED AND MULCHED.
9. SEDIMENT DEPOSITS SHALL BE REMOVED WHEN THEY REACH APPROXIMATELY ONE-HALF THE HEIGHT OF THE BARRIER. SEDIMENT SHALL BE DISPOSED OF IN A MANNER THAT DOES NOT RESULT IN ADDITIONAL EROSION OR POLLUTION.



**SYMBOL**

**CONSTRUCTION SPECIFICATIONS**

1. FILTER FABRIC SHALL HAVE AN EOS OF 40-85. BURLAP MAY BE USED FOR SHORT TERM APPLICATIONS.
2. CUT FABRIC FROM A CONTINUOUS ROLL TO ELIMINATE JOINTS, IF JOINTS ARE NEEDED THEY WILL BE OVERLAPPED TO THE NEXT STAKE.
3. STAKE MATERIALS WILL BE STANDARD 2" x 4" WOOD OR EQUIVALENT. METAL WITH A MINIMUM LENGTH OF 3 FEET.
4. SPACE STAKES EVENLY AROUND INLET 3 FEET APART AND DRIVE A MINIMUM 18 INCHES DEEP. SPANS GREATER THAN 3 FEET MAY BE BRIDGED WITH THE USE OF WIRE MESH BEHIND THE FILTER FABRIC FOR SUPPORT.
5. FABRIC SHALL BE EMBEDDED 1 FOOT MINIMUM BELOW GROUND AND BACKFILLED. IT SHALL BE SECURELY FASTENED TO THE STAKES AND FRAME.
6. A 2" x 4" WOOD FRAME SHALL BE COMPLETED AROUND THE CREST OF THE FABRIC FOR OVER FLOW STABILITY.

MAXIMUM DRAINAGE AREA 1 ACRE

U.S. DEPARTMENT OF AGRICULTURE  
NATURAL RESOURCES CONSERVATION SERVICE  
NEW YORK STATE DEPARTMENT OF ENVIRONMENTAL CONSERVATION  
NEW YORK STATE SOIL & WATER CONSERVATION COMMITTEE

**FILTER FABRIC  
DROP INLET  
PROTECTION**

**SYMBOL**

**CONSTRUCTION SPECIFICATIONS**

1. WOVEN WIRE FENCE TO BE FASTENED SECURELY TO FENCE POSTS WITH WIRE TIES OR STAPLES. POSTS SHALL BE STEEL EITHER "T" OR "U" TYPE OR HARDWOOD.
2. FILTER CLOTH TO BE TO BE FASTENED SECURELY TO WOVEN WIRE FENCE WITH TIES SPACED EVERY 24" AT TOP AND MID SECTION. FENCE SHALL BE WOVEN WIRE, 12 1/2 GAUGE, 6" MAXIMUM MESH OPENING.
3. WHEN TWO SECTIONS OF FILTER CLOTH ADJOIN EACH OTHER THEY SHALL BE OVERLAPPED BY SIX INCHES AND FOLDED. FILTER CLOTH SHALL BE EITHER FILTER X, MIRAFI 100X, STABILINKA T140N, OR APPROVED EQUIVALENT.
4. PREFABRICATED UNITS SHALL BE GEOFAB, ENVIROFENCE, OR APPROVED EQUIVALENT.
5. MAINTENANCE SHALL BE PERFORMED AS NEEDED AND MATERIAL REMOVED WHEN "BULGES" DEVELOP IN THE SILT FENCE.

U.S. DEPARTMENT OF AGRICULTURE  
NATURAL RESOURCES CONSERVATION SERVICE  
NEW YORK STATE DEPARTMENT OF ENVIRONMENTAL CONSERVATION  
NEW YORK STATE SOIL & WATER CONSERVATION COMMITTEE

**SILT FENCE**



UNAUTHORIZED ALTERATIONS OR ADDITIONS TO THIS  
DRAWING IS A VIOLATION OF SECTION 7209 (2) OF THE  
NEW YORK STATE EDUCATION LAW.

SHEET NUMBER

**S-3**

5  
4  
3  
2  
1

REV DATE: 10/7/21  
ORIGINAL DATE: 10/1/2021

**CIARCIA ENGINEERING, P.C.**  
360 UNDERHILL AVENUE  
YORKTOWN HEIGHTS, NY 10598  
(914) 245-0123

**EROSION CONTROL PLAN**

REPLACEMENT OF CHILLER AT  
JOSEPH G. CAPUTO  
COMMUNITY CENTER  
PREPARED FOR  
VILLAGE OF OSSINING



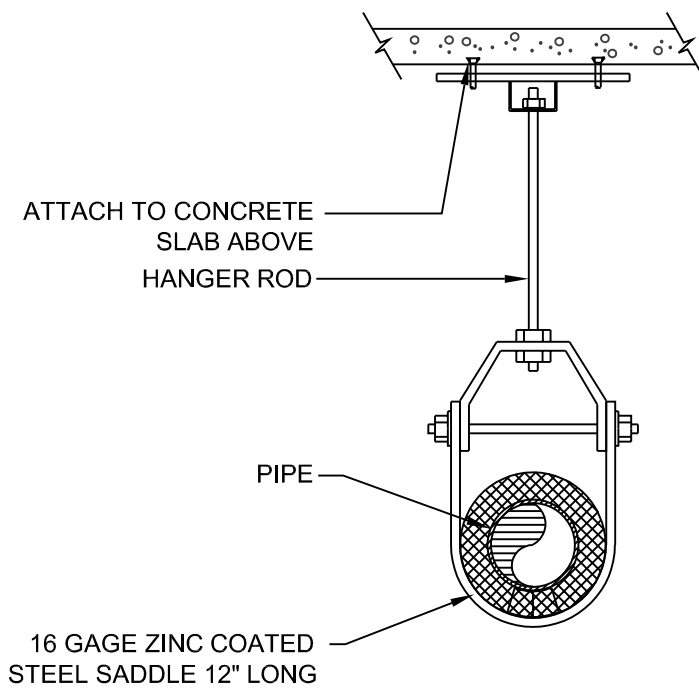




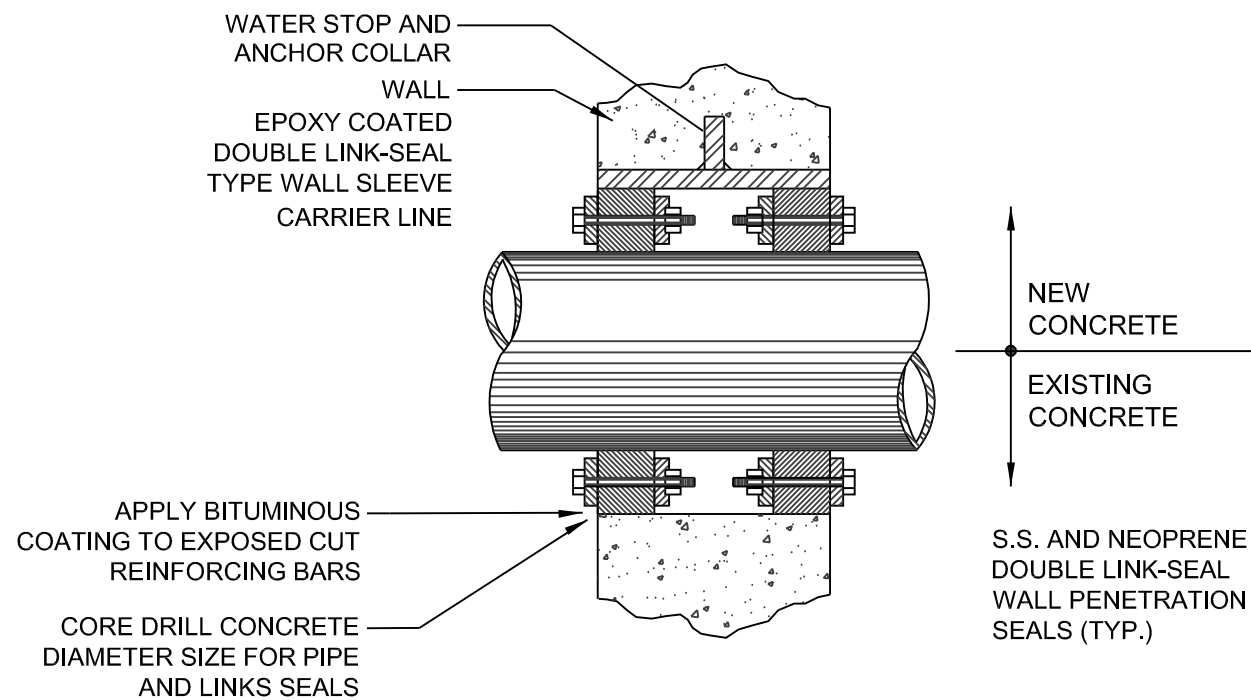
AIR COOLED CHILLER SCHEDULE

UNIT NO.	SERVICE	CAPACITY (TONS)	CHILLER PRESSURE DROP (FT H2O)	EFFICIENCY WITHOUT PUMP (EER) (BTU/W)	EVAPORATOR					CONDENSER			COMPRESSOR			ELECTRICAL			PHYSICAL CHARACTERISTICS				MANUFACTURER	MODEL
					FLUID TYPE	EWT (F)	LWT (F)	FLOW (GPM)	PRESSURE DROP (FT H2O)	NUMBER OF FANS	AIRFLOW (CFM)	EAT (F)	TYPE	QUANTITY	REFRIGERANT	VOLTS/PHASE	MCA	MOCP	WEIGHT (LBS)	LENGTH (IN)	WIDTH (IN)	HEIGHT (IN)		
CH 1	CHILLED WATER AIR HANDLERS	35.69	9.44	10.70	WATER	54	44	85.35	6.19	3	29,600	95	SCROLL	2	R-410A	208/3	165.4	200	2,163	89	93	67	CARRIER	30RAP035

- NOTES:
1. PROVIDE UNIT WITH DISCONNECT SWITCH
  2. CONTRACTOR SHALL PROVIDE EQUIPMENT PAD FOR CHILLER TO BE MOUNTED ON. REFER TO S-1 FOR ADDITIONAL INFORMATION.
  3. CONTRACTOR SHALL CONNECT UNIT TO EXISTING BAS SYSTEM FOR CONTROL
  4. APPROVED EQUAL MANUFACTURERS AS LISTED IN SPECIFICATION SHALL FIT ON EQUIPMENT PAD AND EQUIPMENT PAD SHALL BE ABLE TO WITHSTAND WEIGHT. REFER TO S-1 FOR SIZE OF PAD



INSULATED PIPE  
W/ VAPOR BARRIER  
TYPICAL CLEVIS HANGER SUPPORT



PIPE PENETRATION DETAIL FOR  
WALLS 12" THICK AND GREATER

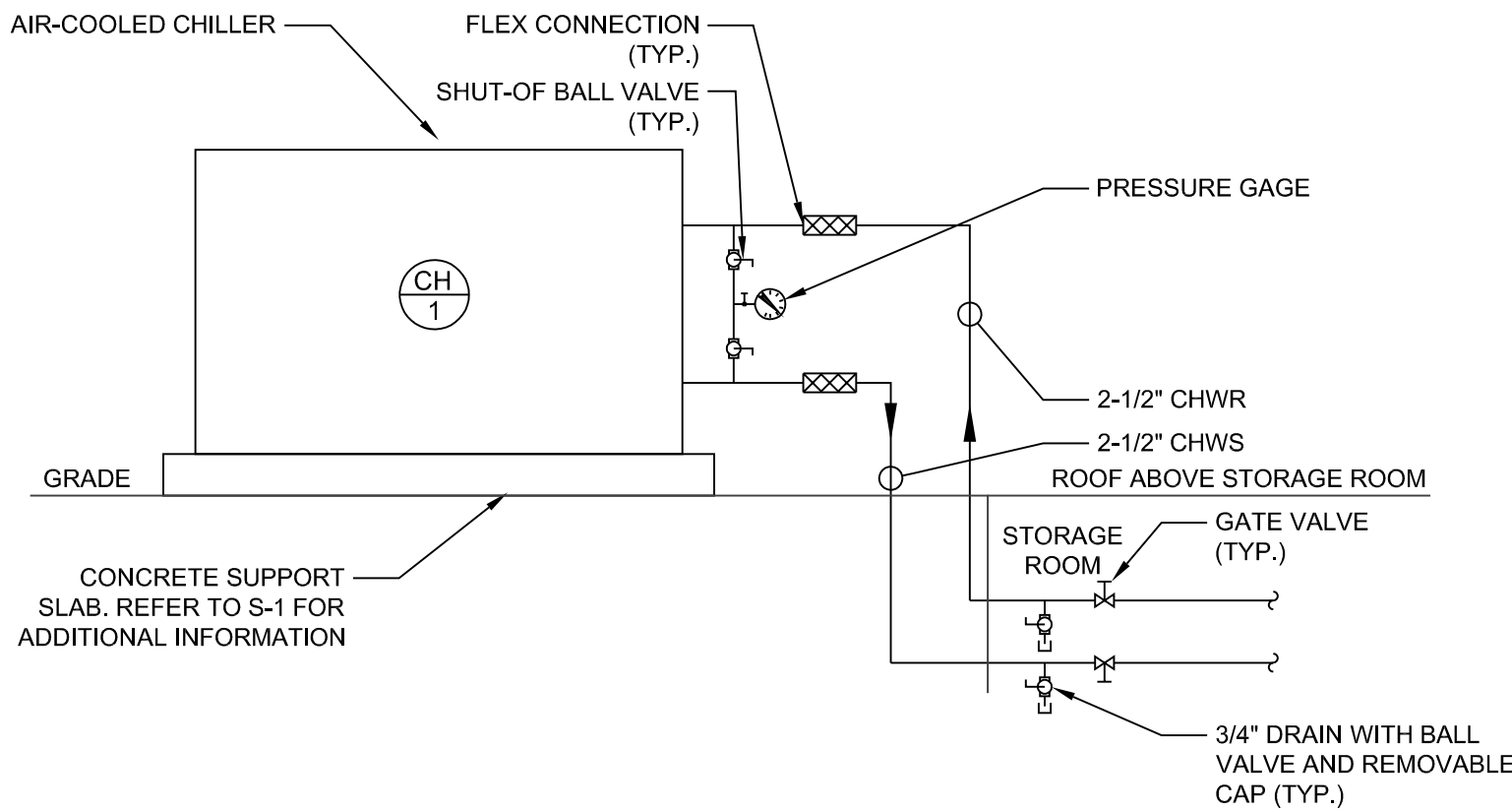
NO SCALE

INDIVIDUAL PIPE HANGER ROD AND SPACING SCHEDULE					
NOMINAL PIPE OR TUBE SIZE - INCHES	3/4	1	1 1/2	2	2 1/2
HANGER ROD SIZES - INCHES	3/8	3/8	3/8	3/8	1/2
MAXIMUM SPACING BETWEEN PIPE SUPPORTS - FEET	6	7	9	10	11
MAX. SPACING BETWEEN CU. TUBE SUPPORTS - FEET	6	6	8	9	10

NOTES: TRAPEZE HANGER SPACING SHALL BE BASED ON SPACING OF SMALLEST PIPE ON TRAPEZE. TRAPEZE SHALL BE DESIGNED WITH A FACTOR OF SAFETY OF 5 FOR CENTER OF SPAN CONCENTRATED LOAD.

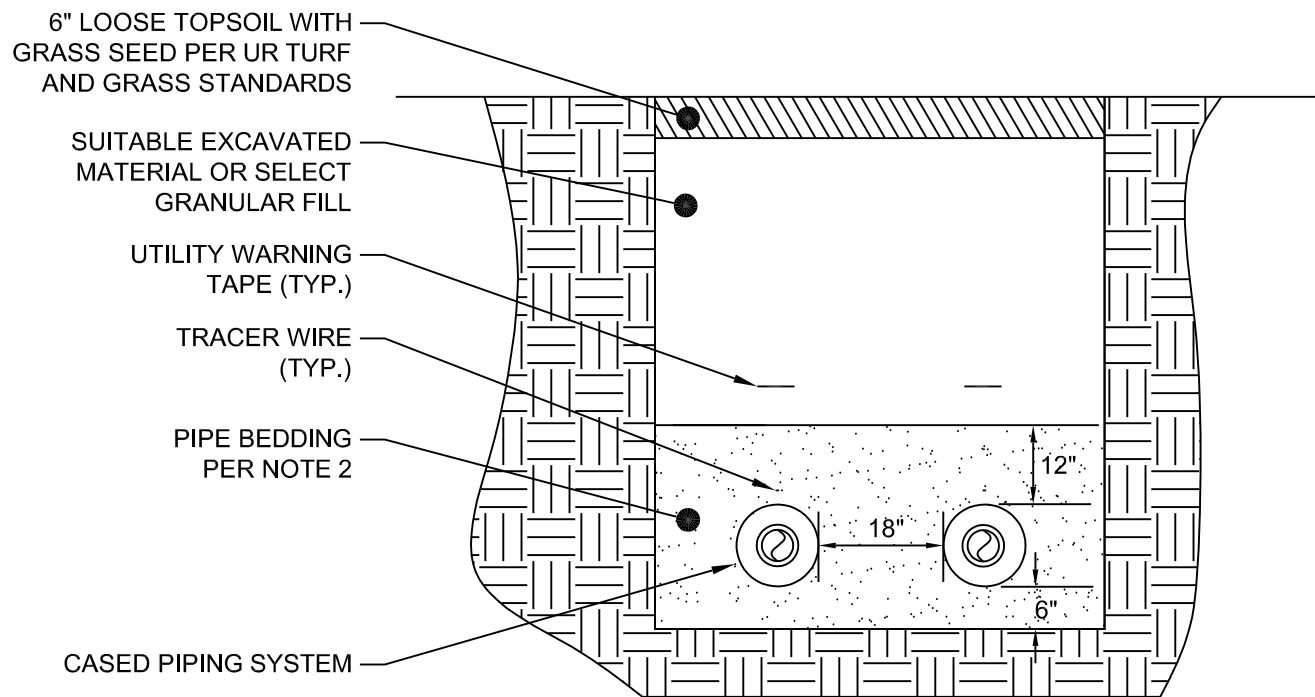
PIPE SUPPORT DETAIL

NO SCALE



AIR COOLED CHILLER PIPE CONNECITON DETIAL

NO SCALE



- NOTES:
1. ALL SUB-GRADES SHALL BE COMPACTED TO 95% MODIFIED PROCTOR PRIOR TO PLACEMENT OF PIPE BEDDING MATERIALS.
  2. PIPE SHALL BE BEDDED IN A MINIMUM OF 6" SAND BEDDING MATERIAL AS PER NYSDOT 703.06-CUSHION SAND. SAND SHALL ENCAPSULATE PIPE SECTION ALL AROUND. BEDDING MATERIAL ZONE SHALL EXTEND 12" ABOVE TOP OF PIPE. ALL SAND BEDDING SHALL BE COMPACTED TO 95% MODIFIED PROCTOR.
  3. FILL MATERIAL ABOVE PIPE BEDDING ZONE SHALL BE SUITABLE EXCAVATED MATERIAL. ALL FILL MATERIAL ABOVE PIPE BEDDING ZONE SHALL BE COMPACTED TO 95% MODIFIED PROCTOR. LEVEL OF COMPACTION SHALL BE DETERMINED BY LABORATORY TESTING OR NUCLEAR DENSITY TESTING, OR OTHER SUITABLE MEANS AS DETERMINED BY THE CONTRACT DOCUMENTS.
  4. TRACER WIRE SHALL BE INSTALLED ABOVE EACH PIPE IN THE TRENCH, ORIENTED ALONG THE CENTER LINE OF THE PIPE. TRACER WIRE SHALL BE A MINIMUM OF 10 AWG INSULATED COPPER WIRE.
  5. UTILITY MARKING TAPE, BLUE IN COLOR READING: "CHILLED WATER" IN BLACK LETTERS, SHALL BE INSTALLED IMMEDIATELY ABOVE PIPE BEDDING ZONE.
  6. RESTORATION OF GRADE SURFACES SHALL MEET, AT A MINIMUM, THE REQUIREMENTS OUTLINED IN THE DETAIL.
  7. CHILLED WATER PIPING SHALL MAINTAIN A SEPARATION OF 18" MINIMUM.
  8. CLEAR SPACE BETWEEN THE PIPING AND THE TRENCH WALL SHALL BE MINIMUM OF 12".

UNDERGROUND CHILLED WATER TRENCH DETAIL

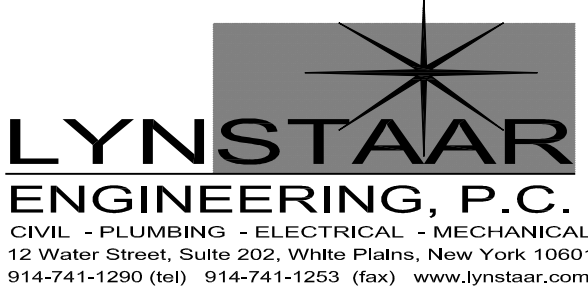
NO SCALE

TO THE BEST OF MY KNOWLEDGE AND PROFESSIONAL JUDGEMENT, THESE PLANS & SPECIFICATIONS ARE IN COMPLIANCE WITH THE ENERGY CONSERVATION CONSTRUCTION CODE OF NEW YORK STATE

NO ALTERATION PERMITTED HEREON EXCEPT AS PROVIDED UNDER SECTION 7209 SUBDIVISION 2 OF THE NEW YORK STATE EDUCATION LAW.

ONLY COPIES FROM THE ORIGINAL OF THIS DRAWING THAT ARE MARKED WITH THE ORIGINAL SEAL AND SIGNATURE OF THE ENGINEER SHALL BE CONSIDERED AS TRUE VALID COPIES.

NO.	DATE	REVISION	BY	



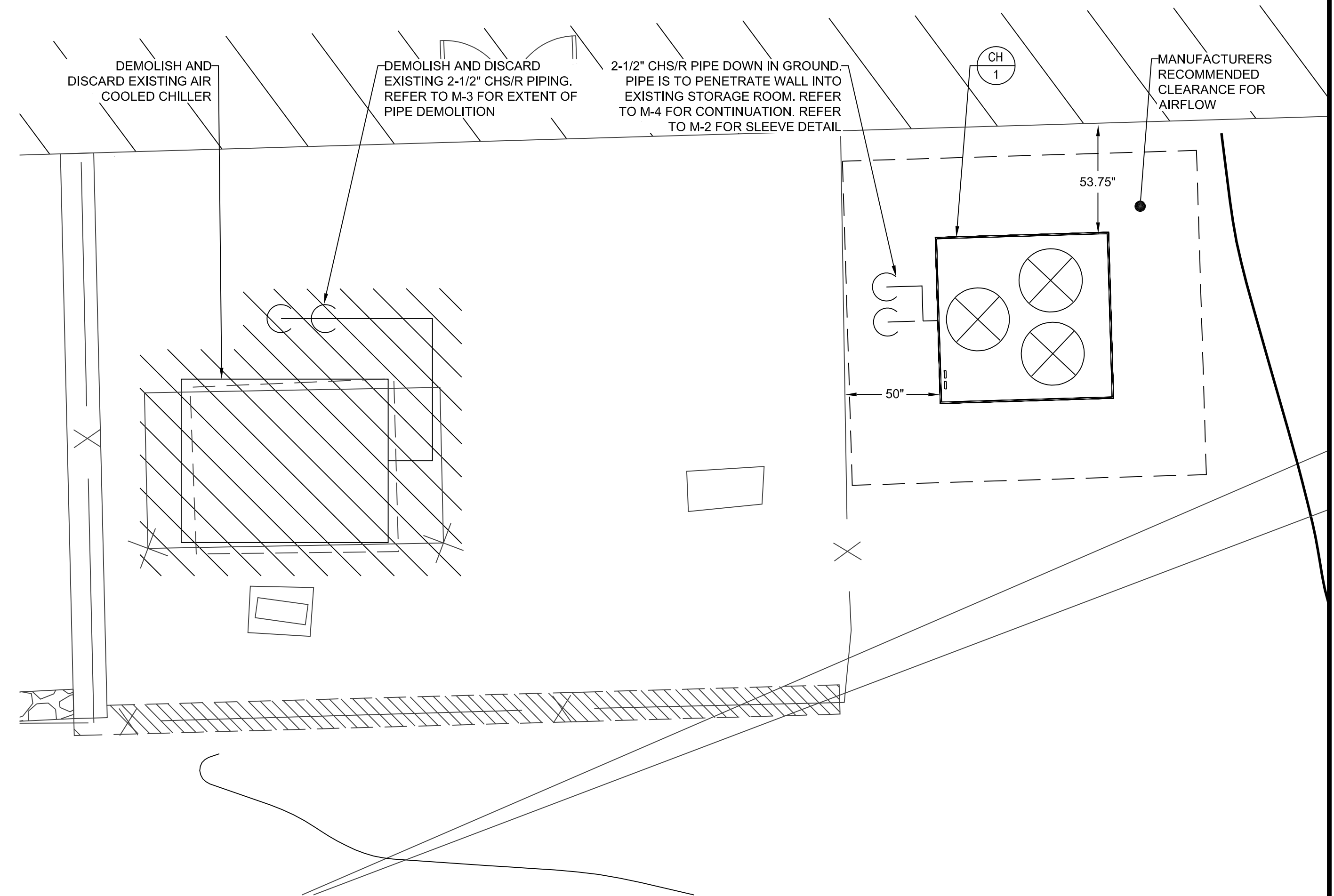
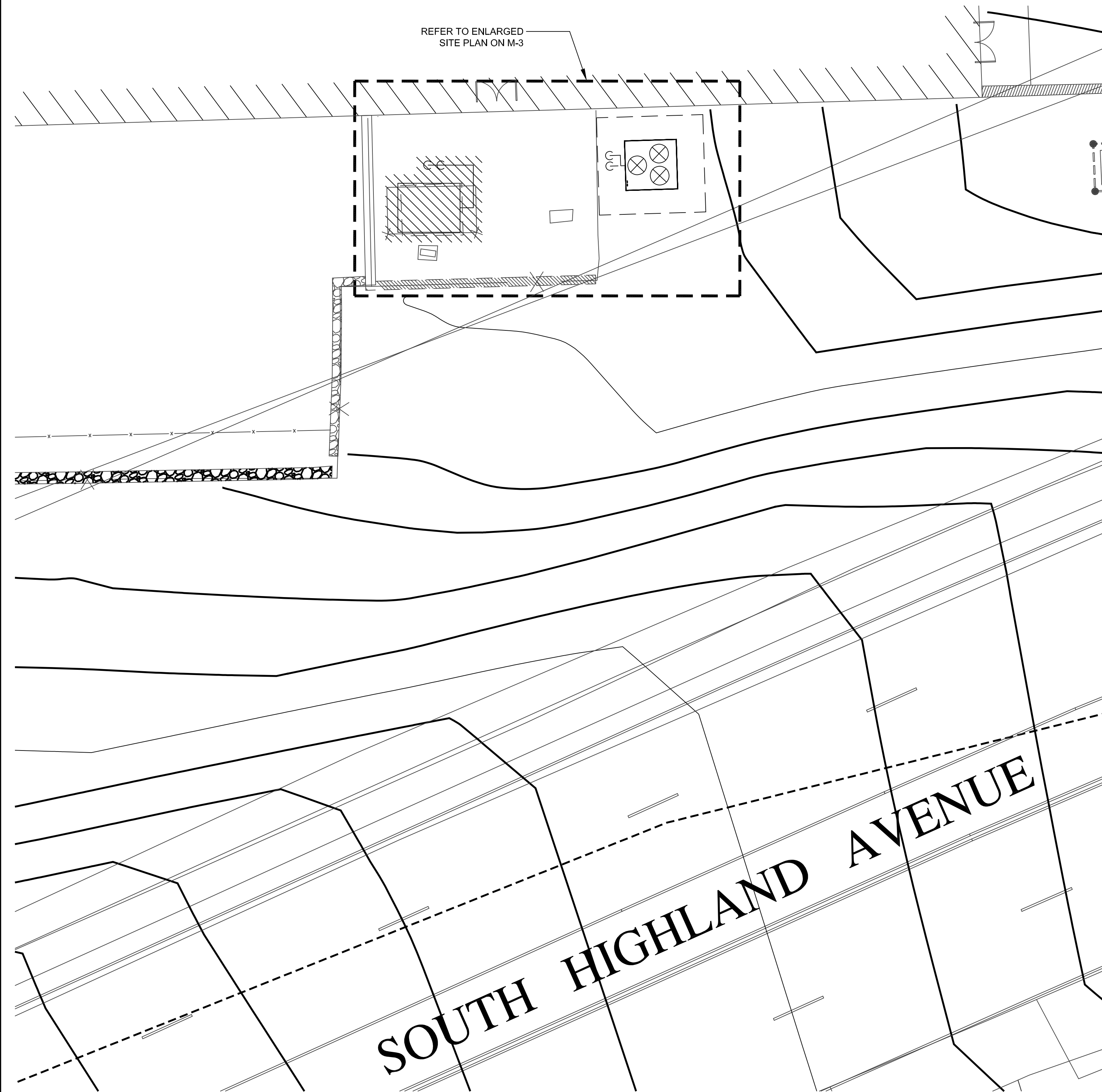
OSSINING CHILLER REPLACEMENT  
95 BROADWAY  
OSSINING, NEW YORK

REPLACEMENT OF CHILLER  
AT JOSEPH G. CAPUTO COMMUNITY CENTER

MECHANICAL DETAILS AND SCHEDULES

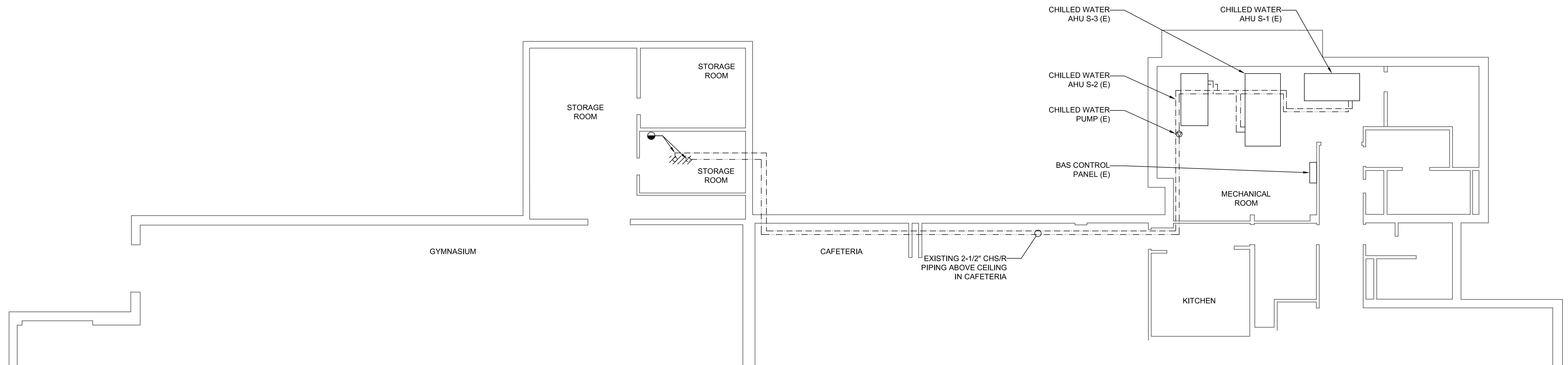
PROJECT NO.	2105
SCALE	AS NOTED
DATE	11/03/2021
DRAWN BY	HSM
CHECKED BY	JSR / GRL
DRAWING NO.	M-2
SHEET NO.	6 OF 10





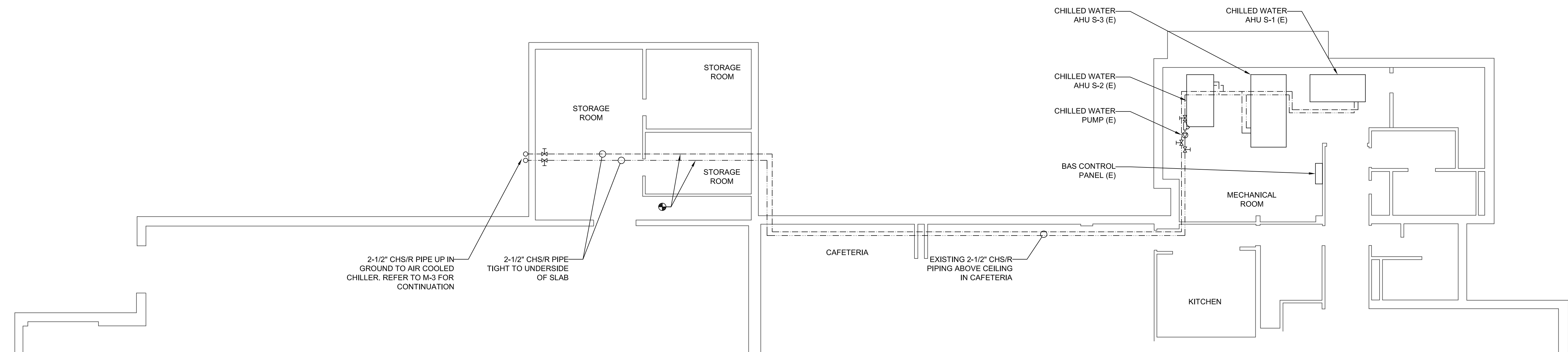
TO THE BEST OF MY KNOWLEDGE AND PROFESSIONAL JUDGEMENT, THESE PLANS & SPECIFICATIONS ARE IN COMPLIANCE WITH THE ENERGY CONSERVATION CONSTRUCTION CODE OF NEW YORK STATE					<div> <b>LYNSTAAR</b> <b>ENGINEERING, P.C.</b> CIVIL - PLUMBING - ELECTRICAL - MECHANICAL 12 Water Street, Suite 202, White Plains, New York 10601 914-741-1290 (tel) 914-741-1253 (fax) www.lynstaar.com</div>			<div>PROJECT NO. 2105</div> <div>SCALE AS NOTED</div> <div>DATE 11/03/2021</div>
NO ALTERATION PERMITTED HEREON EXCEPT AS PROVIDED UNDER SECTION 7209 SUBDIVISION 2 OF THE NEW YORK STATE EDUCATION LAW.							<div>PROJECT</div> <div>REPLACEMENT OF CHILLER AT JOSEPH G. CAPUTO COMMUNITY CENTER</div>	<div>DRAWN BY HSM</div> <div>CHECKED BY JSR / GRL</div>
ONLY COPIES FROM THE ORIGINAL OF THIS DRAWING THAT ARE MARKED WITH THE ORIGINAL SEAL AND SIGNATURE OF THE ENGINEER SHALL BE CONSIDERED AS TRUE VALID COPIES.							<div>SHEET TITLE</div> <div>MECHANICAL SITE PLAN</div>	<div>DRAWING NO.</div> <div>M-3</div>
							<div>SHEET NO.</div> <div>7 of 10</div>	
	NO.	DATE	REVISION	BY				





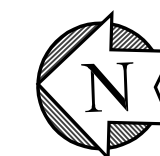
# MECHANICAL LOWER LEVEL DEMOLITION PLAN

SCALE: 1/8" = 1'-0"



# MECHANICAL LOWER LEVEL PLAN

SCALE: 1/8" = 1'-0"

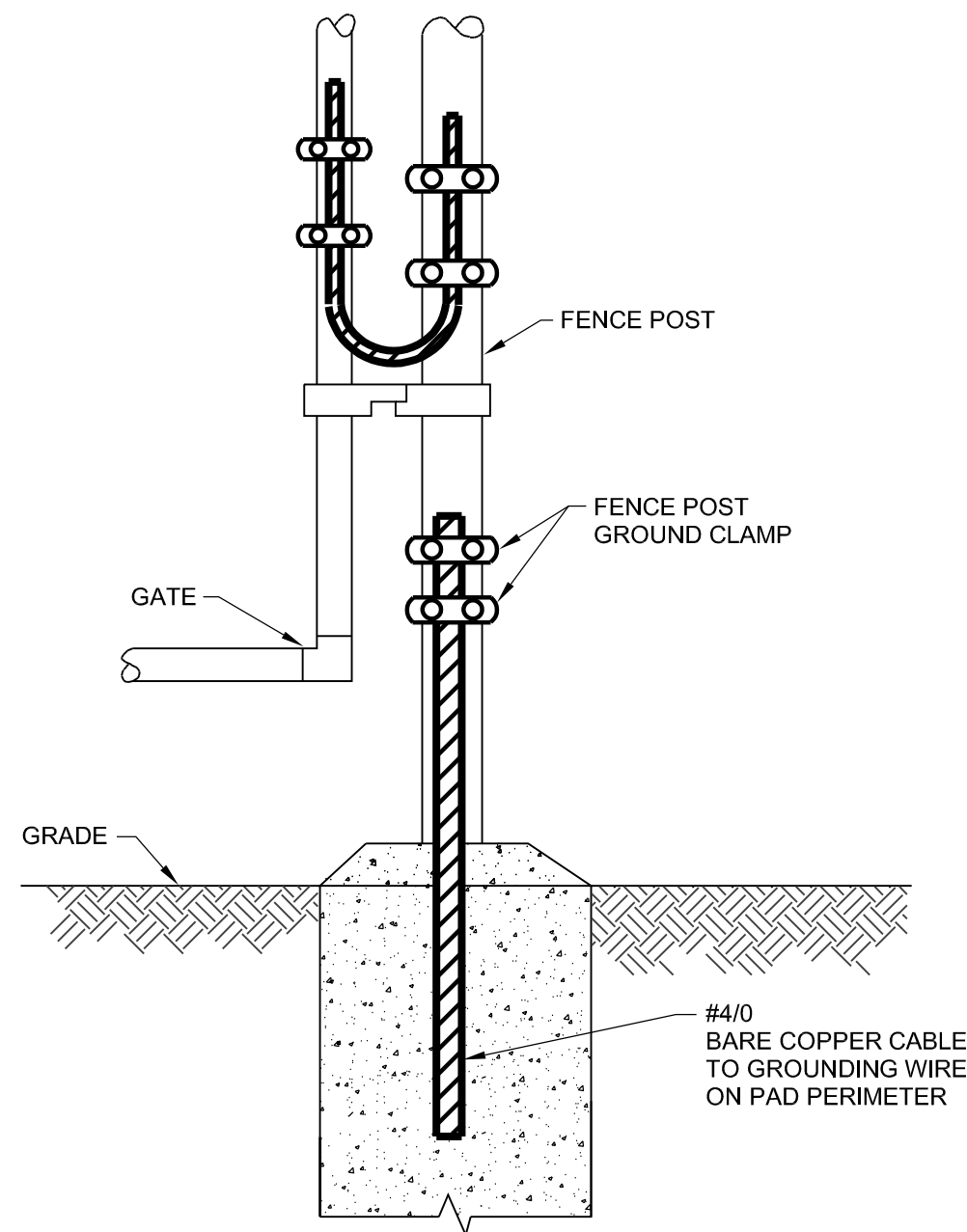


TO THE BEST OF MY KNOWLEDGE AND PROFESSIONAL JUDGEMENT, THESE PLANS & SPECIFICATIONS ARE IN COMPLIANCE WITH THE ENERGY CONSERVATION CONSTRUCTION CODE OF NEW YORK STATE																																																																																																																																																																																																																																																																																																																																																																																																																																																																																																																																																																																																																																																																																																																																																																																																																																																																																																																																																																																																																																																																																																																																																																																																																																																																																																																																																																																																																																											
---	--	--	--	--	--	--	--	--	--	--	--	--	--	--	--	--	--	--	--	--	--	--	--	--	--	--	--	--	--	--	--	--	--	--	--	--	--	--	--	--	--	--	--	--	--	--	--	--	--	--	--	--	--	--	--	--	--	--	--	--	--	--	--	--	--	--	--	--	--	--	--	--	--	--	--	--	--	--	--	--	--	--	--	--	--	--	--	--	--	--	--	--	--	--	--	--	--	--	--	--	--	--	--	--	--	--	--	--	--	--	--	--	--	--	--	--	--	--	--	--	--	--	--	--	--	--	--	--	--	--	--	--	--	--	--	--	--	--	--	--	--	--	--	--	--	--	--	--	--	--	--	--	--	--	--	--	--	--	--	--	--	--	--	--	--	--	--	--	--	--	--	--	--	--	--	--	--	--	--	--	--	--	--	--	--	--	--	--	--	--	--	--	--	--	--	--	--	--	--	--	--	--	--	--	--	--	--	--	--	--	--	--	--	--	--	--	--	--	--	--	--	--	--	--	--	--	--	--	--	--	--	--	--	--	--	--	--	--	--	--	--	--	--	--	--	--	--	--	--	--	--	--	--	--	--	--	--	--	--	--	--	--	--	--	--	--	--	--	--	--	--	--	--	--	--	--	--	--	--	--	--	--	--	--	--	--	--	--	--	--	--	--	--	--	--	--	--	--	--	--	--	--	--	--	--	--	--	--	--	--	--	--	--	--	--	--	--	--	--	--	--	--	--	--	--	--	--	--	--	--	--	--	--	--	--	--	--	--	--	--	--	--	--	--	--	--	--	--	--	--	--	--	--	--	--	--	--	--	--	--	--	--	--	--	--	--	--	--	--	--	--	--	--	--	--	--	--	--	--	--	--	--	--	--	--	--	--	--	--	--	--	--	--	--	--	--	--	--	--	--	--	--	--	--	--	--	--	--	--	--	--	--	--	--	--	--	--	--	--	--	--	--	--	--	--	--	--	--	--	--	--	--	--	--	--	--	--	--	--	--	--	--	--	--	--	--	--	--	--	--	--	--	--	--	--	--	--	--	--	--	--	--	--	--	--	--	--	--	--	--	--	--	--	--	--	--	--	--	--	--	--	--	--	--	--	--	--	--	--	--	--	--	--	--	--	--	--	--	--	--	--	--	--	--	--	--	--	--	--	--	--	--	--	--	--	--	--	--	--	--	--	--	--	--	--	--	--	--	--	--	--	--	--	--	--	--	--	--	--	--	--	--	--	--	--	--	--	--	--	--	--	--	--	--	--	--	--	--	--	--	--	--	--	--	--	--	--	--	--	--	--	--	--	--	--	--	--	--	--	--	--	--	--	--	--	--	--	--	--	--	--	--	--	--	--	--	--	--	--	--	--	--	--	--	--	--	--	--	--	--	--	--	--	--	--	--	--	--	--	--	--	--	--	--	--	--	--	--	--	--	--	--	--	--	--	--	--	--	--	--	--	--	--	--	--	--	--	--	--	--	--	--	--	--	--	--	--	--	--	--	--	--	--	--	--	--	--	--	--	--	--	--	--	--	--	--	--	--	--	--	--	--	--	--	--	--	--	--	--	--	--	--	--	--	--	--	--	--	--	--	--	--	--	--	--	--	--	--	--	--	--	--	--	--	--	--	--	--	--	--	--	--	--	--	--	--	--	--	--	--	--	--	--	--	--	--	--	--	--	--	--	--	--	--	--	--	--	--	--	--	--	--	--	--	--	--	--	--	--	--	--	--	--	--	--	--	--	--	--	--	--	--	--	--	--	--	--	--	--	--	--	--	--	--	--	--	--	--	--	--	--	--	--	--	--	--	--	--	--	--	--	--	--	--	--	--	--	--	--	--	--	--	--	--	--	--	--	--	--	--	--	--	--	--	--	--	--	--	--	--	--	--	--	--	--	--	--	--	--	--	--	--	--	--	--	--	--	--	--	--	--	--	--	--	--	--	--	--	--	--	--	--	--	--	--	--	--	--	--	--	--	--	--	--	--	--	--	--	--	--	--	--	--	--	--	--	--	--	--	--	--	--	--	--	--	--	--	--	--	--	--	--	--	--	--	--	--	--	--	--	--	--	--	--	--	--	--	--	--	--	--	--	--	--	--	--	--	--	--	--	--	--	--	--	--	--	--	--	--	--	--	--	--	--	--	--	--	--	--	--	--	--	--	--	--	--	--	--	--	--	--	--	--	--	--	--	--	--	--	--	--	--	--	--	--	--	--	--	--	--	--	--	--	--	--	--	--	--	--	--	--	--	--	--	--	--	--	--	--	--	--	--	--	--	--	--	--	--	--	--	--	--	--	--	--	--	--	--	--	--	--	--	--	--	--	--	--	--	--	--	--	--	--	--	--	--	--	--	--	--	--	--	--	--	--	--	--	--	--	--	--	--	--	--	--	--	--	--	--	--	--	--	--	--	--	--	--	--	--	--	--	--	--	--	--	--	--	--	--	--	--	--	--	--	--	--	--	--	--	--	--	--	--	--	--	--	--	--	--	--	--	--	--	--	--	--	--	--	--	--	--	--	--	--	--	--	--	--	--	--	--	--	--	--	--	--	--	--	--	--	--	--	--	--	--	--	--	--	--	--	--	--	--	--	--	--	--	--	--	--	--	--	--	--	--	--	--	--	--	--	--	--	--	--	--	--	--	--	--	--	--	--	--	--	--	--	--	--	--	--	--	--	--	--	--	--	--	--	--	--	--	--	--	--	--	--	--	--	--	--	--	--	--	--	--	--	--	--	--	--	--	--	--	--	--	--	--	--	--	--	--	--	--	--	--	--	--	--	--	--	--	--	--	--	--	--	--	--	--	--	--	--	--	--	--	--	--	--	--	--	--	--	--	--	--	--	--	--	--	--	--	--	--	--	--	--	--	--	--	--	--	--	--	--	--	--	--	--	--	--	--	--	--	--	--	--	--	--	--	--	--	--	--	--	--	--	--	--	--	--	--	--	--	--	--	--	--	--	--	--	--	--	--	--	--	--	--	--	--	--	--	--	--	--	--	--	--	--	--	--	--	--	--	--	--	--	--	--	--	--	--	--	--	--	--	--	--	--	--	--	--	--	--	--	--	--	--	--	--	--	--	--	--	--	--	--	--	--	--	--	--	--	--	--	--	--	--	--	--	--	--	--	--	--	--	--	--



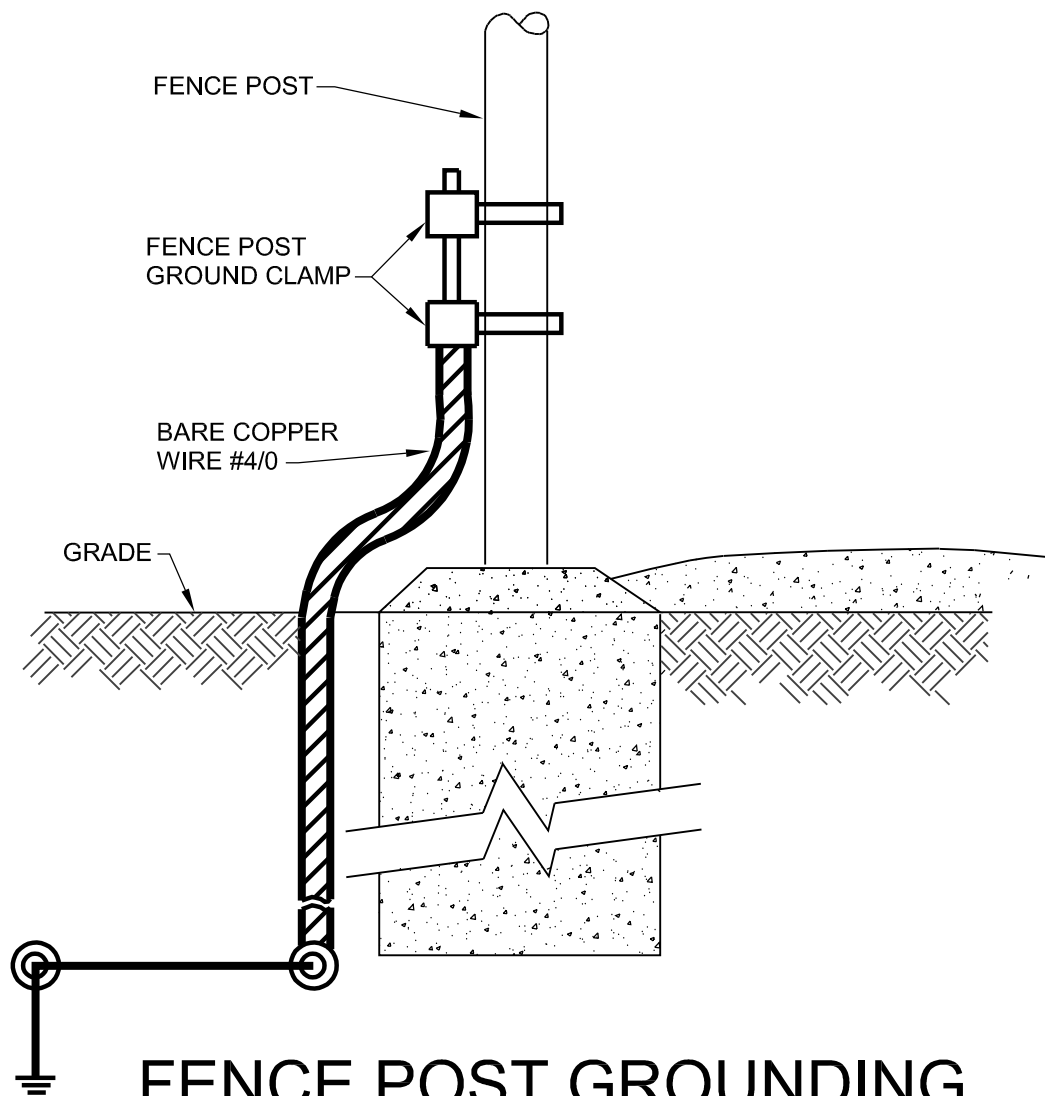
GENERAL NOTES:

1. ALL WORK SHALL COMPLY WITH AND BE INSTALLED IN ACCORDANCE WITH THE SUPPLEMENTAL UNIFORM AND FIRE PREVENTION BUILDING CODE OF THE STATE OF NEW YORK AND ALL CODES LOCAL OR OTHERWISE HAVING JURISDICTION OVER THE WORK.
2. THE WORDS PROVIDE OR INSTALL, SINGLY OR IN COMBINATION SHALL MEAN FURNISH AND INSTALL.
3. THE CONTRACTOR SHALL PROVIDE ALL CUTTING AND PATCHING AS REQUIRED FOR THE INSTALLATION OF HIS WORK.
4. THIS CONTRACTOR SHALL BE RESPONSIBLE FOR THE PROTECTION OF HIS WORK AND NEWLY INSTALLED OR EXISTING WORK, INCLUDING PROTECTION OF BUILDING OCCUPANTS, PUBLIC, AND PERSONNEL, PROVIDE APPROPRIATE BARRIERS, AND SAFETY GUARD RAILS AS REQUIRED.
5. NO SYSTEM SHALL BE SHUT DOWN WITHOUT PERMISSION OF THE OWNER/OWNER. ADEQUATE NOTICE SHALL BE GIVEN TO THE OWNER/OWNER, WHEN SYSTEM SHUTDOWN INVOLVES A TEMPORARY DISRUPTION TO SERVICES.
6. ANY DISRUPTION IN SERVICES SHALL BE KEPT TO A MINIMUM AND SHALL NOT BE IMPLEMENTED WITHOUT RECEIVING PRIOR WRITTEN APPROVAL OF THE OWNER/OWNER.
7. ALL WORK SHALL BE COORDINATED WITH THE OWNER AND ALL TRADES RELATED TO THE INSTALLATION OF THIS PROJECT.
8. THE CONTRACTOR SHALL TURN OVER TO THE OWNER AT THE COMPLETION OF ALL WORK, THREE (3) COPIES IN BOUND FORM OF OPERATING, MAINTENANCE, AND INSTRUCTION MANUALS WHICH SHALL INCLUDE ALL EQUIPMENT BROCHURES, PIPING AND WIRING DIAGRAMS, DRAWINGS, TEMPERATURE CONTROLS, AND STARTUP AND SHUTDOWN PROCEDURES OF ALL NEWLY INSTALLED EQUIPMENT.
9. THE CONTRACTOR SHALL FILE PLANS WITH GOVERNING AUTHORITIES HAVING JURISDICTION AND SHALL SECURE ALL PERMITS AND PAY ALL FEES REQUIRED FOR THE INSTALLATION OF HIS WORK.
10. THE CONTRACTOR SHALL GUARANTEE ALL MATERIAL AND WORK INSTALLED TO BE FREE FROM DEFECTS IN MATERIAL AND WORKMANSHIP FOR A PERIOD OF ONE (1) YEAR, AFTER ACCEPTANCE OF THE INSTALLATION BY THE ENGINEER AND OWNER. THE CONTRACTOR SHALL SUBMIT IN WRITING TO THE OWNER STATING SAME.
11. THE CONTRACTOR SHALL INDEMNIFY THE OWNER, HIS REPRESENTATIVES AND THE ENGINEER FROM ANY CLAIMS OR SUITS RESULTING IN NEGLIGENCE ON THE PART OF THE CONTRACTOR AND FOR FAILING TO EXECUTE HIS WORK IN ACCORDANCE WITH THE CONTRACT DOCUMENTS.
12. THE CONTRACTOR SHALL PROVIDE ALL RIGGING, HOISTING AND SCAFFOLDING AS REQUIRED FOR THE INSTALLATION OF HIS WORK.
13. ALL WORK SHALL BE PERFORMED BY LICENSED CONTRACTORS AND WORKMAN EXPERIENCED IN THE TRADE HAVING JURISDICTION. ALL WORK SHALL BE SUPERVISED AT ALL TIMES AND WORKMANSHIP SHALL BE FIRST CLASS IN ALL RESPECTS.
14. ANY DEVIATION OR CHANGE IN DESIGN SHALL NOT BE MADE WITHOUT WRITTEN APPROVAL OF THE ENGINEER OR THE OWNER/OWNER. ANY WORK INSTALLED WITHOUT PRIOR APPROVAL OF THE ENGINEER OR OWNER/OWNER OR FOUND TO BE DEFECTIVE OR OF POOR QUALITY SHALL BE REPLACED BY THE CONTRACTOR AT HIS OWN EXPENSE.
15. ALL CONSTRUCTION WORK SHALL BE CONFINED TO THE AREA INDICATED ON PLANS.
16. ALL WORK SHALL BE PERFORMED DURING NORMAL WORKING HOURS: 8 A.M. TO 5 P.M. MONDAY THROUGH FRIDAY EXCEPT LEGAL HOLIDAYS OR FOR EMERGENCY REPAIRS, UNLESS DIRECTED OTHERWISE BY THE OWNER/OWNER. HOWEVER, THE CONTRACTOR MAY WORK EXTRA HOURS AS NEEDED TO COMPLETE THE CONTRACT SCOPE OF WORK AND MEET THE COMPLETION DATE AT NO ADDITIONAL COST TO OWNER, AS LONG AS THE OWNER/OWNER HAS BEEN PROPERLY NOTIFIED AND HAS APPROVED SAME.
17. PATCHING & REPAIR OF CONCRETE, SIDEWALK OR GROUND, ETC. SHALL BE BY TRADE WHO PERFORMED WORK AND SHALL MATCH EXISTING SURROUNDING AREA IN ALL RESPECTS. WORK AREA SHALL BE LEFT CLEAN AT THE END OF EACH DAY. ALL DISCARDED AND DEMOLISHED MATERIAL AND RUBBISH SHALL BE REMOVED FROM PREMISES DAILY IN A LEGAL AND APPROVED MANNER.
18. THE CONTRACTOR SHALL MAINTAIN ON THE JOB SITE A SET OF SHOP DRAWINGS IN WHICH ANY DEVIATIONS FROM THE ORIGINAL DESIGN SHALL BE NOTED. UPON COMPLETION OF THE INSTALLATION OF NEW WORK THE CONTRACTOR SHALL TURN OVER TO THE OWNER/OWNER AND ENGINEER (1) SET OF AS-BUILT REPRODUCIBLE DRAWINGS AND (1) SET OF PRINTS INCLUDING ALL APPROVED FIELD CHANGES AND DESIGN DEVIATIONS PRIOR TO RECEIPT OF FINAL PAYMENT BY OWNER.
19. ALL WORK SHOWN ON ALL DRAWINGS IS NEW UNLESS OTHERWISE NOTED.
20. ALL DOWNSTREAM DEVICES AND EQUIPMENT WHICH BECOME DISCONNECTED DURING THIS CONSTRUCTIONS SHALL BE RECONNECTED AT NO COST TO THE OWNER. PROVIDE ALL CONDUIT AND WIRE AS REQUIRED
21. THE CONTRACTOR SHALL SUPERVISE AND DIRECT THE WORK, AS WELL AS BE SOLELY RESPONSIBLE FOR THE CONSTRUCTION MEANS, METHODS, TECHNIQUES, SEQUENCES AND PROCEDURES OF THE WORK.
22. THE CONTRACTOR SHALL BE RESPONSIBLE FOR TAKING REASONABLE PRECAUTIONS AND SHALL PROVIDE REASONABLE PROTECTION TO PREVENT INJURY OR DAMAGE TO PERSONS, THE WORK AND OTHER PROPERTY.



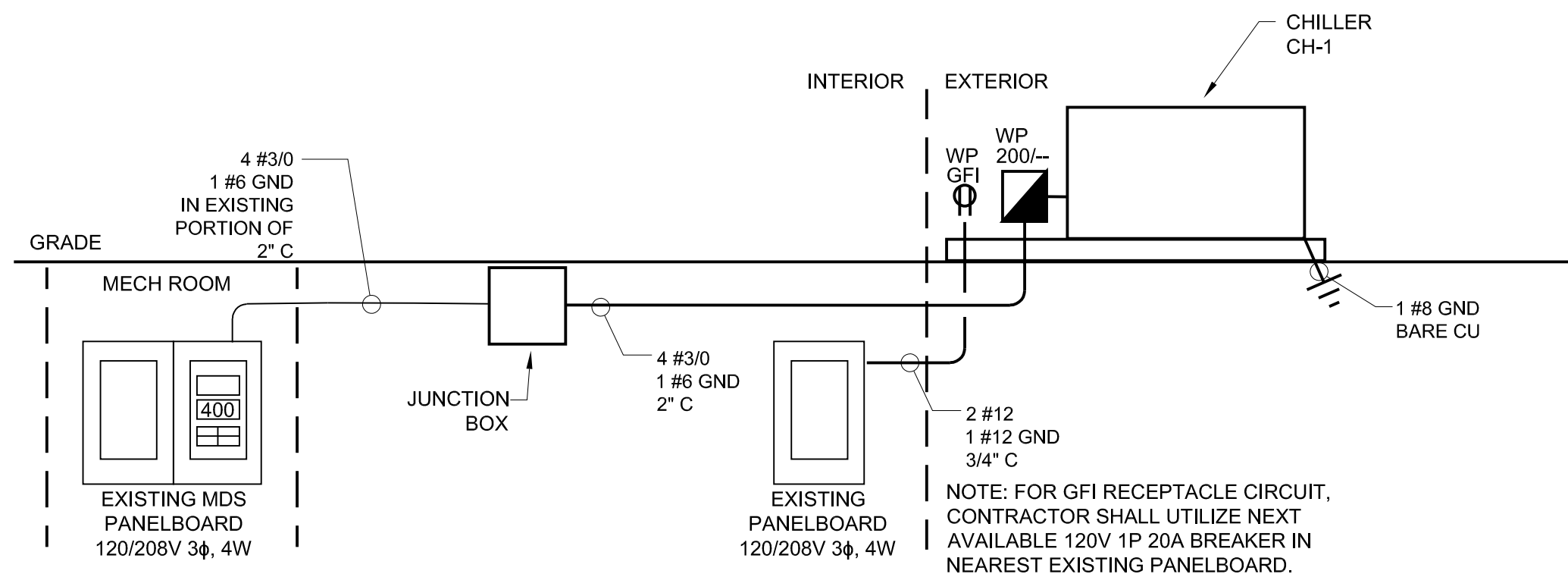
FENCE POST & GATE GROUNDING

NO SCALE



FENCE POST GROUNDING

NO SCALE



NOTES:

1. REPLACE EXISTING FUSES IN EXISTING 400A SWITCH PREVIOUSLY SERVING CHILLER WITH 200A FUSES.
2. FEEDERS SERVING CHILLER SHALL BE RUN IN EXISTING PORTION OF CONDUIT AS INDICATED. PROVIDE JUNCTION BOX AND EXTEND FEEDER AND CONDUIT TO CHILLER AS REQUIRED.

POWER SINGLE LINE DIAGRAM

NO SCALE

LEGEND

SYMBOL	DESCRIPTION
— — —	EXISTING EQUIPMENT, DEVICE, CONDUIT, ETC.
— — —	EXISTING EQUIPMENT, DEVICE, CONDUIT, ETC. TO BE REMOVED
— — —	EQUIPMENT, DEVICE, CONDUIT, ETC. TO BE PROVIDED
30A/3P	30 AMP, 3 POLE CIRCUIT BREAKER
(M)	METER
J	CURRENT TRANSFORMER
J	PANELBOARD
J	JUNCTION BOX
200/-	DISCONNECT SWITCH - FRAME/FUSE
///	CIRCUIT HOMERUN (120V) TO PANELBOARD
///	WIREWAY - CROSSLINES INDICATE NUMBER OF CONDUCTORS WHERE MORE THAN TWO
— x — x — x —	FENCE

NOTE: ALL WORK IS NEW UNLESS OTHERWISE NOTED.

TO THE BEST OF MY KNOWLEDGE AND PROFESSIONAL JUDGEMENT, THESE PLANS & SPECIFICATIONS ARE IN COMPLIANCE WITH THE ENERGY CONSERVATION CONSTRUCTION CODE OF NEW YORK STATE

NO ALTERATION PERMITTED HEREON EXCEPT AS PROVIDED UNDER SECTION 7209 SUBDIVISION 2 OF THE NEW YORK STATE EDUCATION LAW.

ONLY COPIES FROM THE ORIGINAL OF THIS DRAWING THAT ARE MARKED WITH THE ORIGINAL SEAL AND SIGNATURE OF THE ENGINEER SHALL BE CONSIDERED AS TRUE VALID COPIES.

NO.	DATE	REVISION	BY	

**LYNSTAAR**  
ENGINEERING, P.C.  
CIVIL - PLUMBING - ELECTRICAL - MECHANICAL  
12 Water Street, Suite 202, White Plains, New York 10601  
914-741-1290 (tel) 914-741-1253 (fax) www.lyNSTAAR.com



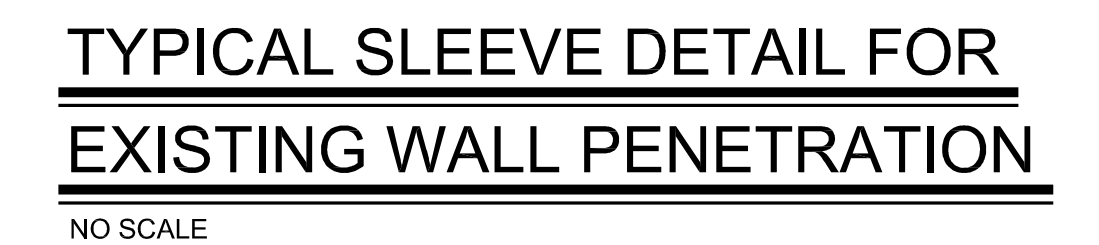
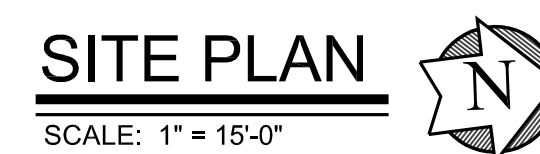
OSSINING CHILLER REPLACEMENT  
95 BROADWAY  
OSSINING, NEW YORK

REPLACEMENT OF CHILLER  
AT JOSEPH G. CAPUTO COMMUNITY CENTER

ELECTRICAL NOTES, DETAILS, LEGEND AND DIAGRAM

PROJECT NO.	2105
SCALE	AS NOTED
DATE	11/03/2021
DRAWN BY	BG
CHECKED BY	JGD
DRAWING NO.	E-1
SHEET NO.	9 of 10





CONTRACTOR TO HIRE SERVICES OF  
OUTSIDE AGENCY FOR MARKING OUT  
ALL UNDERGROUND UTILITIES. MARK  
OUT UNDER AND 6'-0" BOTH SIDES OF  
EXCAVATION AREA AND ENTIRE  
LENGTH. CONTRACTOR IS  
RESPONSIBLE FOR ANY DAMAGED  
UTILITIES AND COST FOR THE REPAIRS.

TO THE BEST OF MY KNOWLEDGE AND PROFESSIONAL JUDGEMENT, THESE PLANS & SPECIFICATIONS ARE IN COMPLIANCE WITH THE ENERGY CONSERVATION CONSTRUCTION CODE OF NEW YORK STATE.				
NO ALTERATION PERMITTED HEREON EXCEPT AS PROVIDED UNDER SECTION 7209 SUBDIVISION 2 OF THE NEW YORK STATE EDUCATION LAW.				
ONLY COPIES FROM THE ORIGINAL OF THIS DRAWING THAT ARE MARKED WITH THE ORIGINAL SEAL AND SIGNATURE OF THE ENGINEER SHALL BE CONSIDERED AS TRUE. VALID COPIES.				
	NO.	DATE	REVISION	BY



**LYNSTAAR**  
ENGINEERING, P.C.  
CIVIL - PLUMBING - ELECTRICAL - MECHANICAL  
12 Water Street, Suite 202, White Plains, New York 10601  
914-741-1200 (tel) 914-741-1253 (fax) www.lynstaar.com



<b>OSSINING CHILLER REPLACEMENT</b> 95 BROADWAY OSSINING, NEW YORK		PROJECT NO. 2105 SCALE AS NOTED DATE 11/03/2021
REPLACEMENT OF CHILLER AT JOSEPH G. CAPUTO COMMUNITY CENTER		DRAWN BY BG CHECKED BY JGD DRAWING NO.
ELECTRICAL SITE PLAN AND DETAILS		SHEET NO. 10 OF 10 <div style="font-size: 2em; font-weight: bold; float: right;">E-2</div>