

PLUMBING SYMBOL LIST	
	ABOVE GROUND NATURAL GAS PIPE
	UNDERGROUND NATURAL GAS PIPE
	GAS SHUT-OFF VALVE
	CONNECT TO EXISTING
	GAS PRESSURE REGULATOR
	PIPE DOWN
	PIPE UP
	T-FITTING
	GAS METER

PLUMBING ABBREVIATIONS	
BTU	BRITISH THERMAL UNITS
BTU/HR	BTU PER HOUR
CAP	CAPACITY
CONT.	CONTINUATION
CU. FT.	CUBIC FEET
CU. IN.	CUBIC INCHES
D	DEPTH
DIAM, Ø	DIAMETER
DN	DOWN
DWG	DRAWING
FT	FEET
GAL	GALLON
GPH	GALLONS PER HOUR
GPM	GALLONS PER MINUTE
H	HEIGHT
HDPE	HIGH DENSITY POLYETHYLENE PIPE
HP	HORSEPOWER
HR	HOUR
HZ	FREQUENCY (HERTZ)
IN	INCHES
L	LENGTH
LBS	POUNDS
LPG	LIQUEFIED PETROLEUM GAS (PROPANE)
M	METER
MAX	MAXIMUM
MBH	THOUSAND BTU PER HOUR
MIN	MINIMUM
NG	NATURAL GAS
N.I.C.	NOT IN CONTRACT
N.T.S.	NOT TO SCALE
PC	PLUMBING CONTRACTOR
PRV	PRESSURE REDUCING VALVE
PSI	POUNDS PER SQUARE INCH (GAUGE)
R	REGULATOR
SQ.FT	SQUARE FOOT
TYP.	TYPICAL
UON	UNLESS OTHERWISE NOTED
WC	WATER COLUMN

NATURAL GAS NOTES

- ALL PIPING SHALL BE RUN STRAIGHT AND PLUMB, AS DIRECT AS POSSIBLE.
- PIPE SHALL BE FULL LENGTH TO GREATEST EXTENT AS POSSIBLE. PIPING SHALL BE CLEANED OF DIRT, RUST, GREASE AND OTHER FOREIGN MATTER, PIPING SHALL BE KEPT CLEAN AS WORK PROGRESSES.
- ALL PIPING, FITTINGS, VALVES ETC., SHALL BE NEW AND UNUSED BEFORE.
- INSTALL VALVES IN ALL SERVICE CONNECTIONS IN ALL BRANCH LINES.
- CHANGES IN PIPE SIZES SHALL BE MADE WITH REDUCING OR INCREASING FITTINGS.
- USE SEALANT ON METAL GAS PIPING THREADS WHICH ARE CHEMICALLY RESISTANT TO NATURAL GAS. USE SEALANT SPARINGLY, AND APPLY TO ONLY MALE THREADS OF METAL JOINTS.
- REMOVE CUTTING AND THREADING BURRS BEFORE ASSEMBLING PIPING.
- DO NOT INSTALL DEFECTIVE PIPING AND FITTINGS, DO NOT USE PIPE WITH THREADS WHICH ARE CHIPPED, STRIPPED AND DAMAGED.
- PLUG EACH OUTLET INCLUDING VALVES WITH THREADS PLUG OR CAP IMMEDIATELY AFTER INSTALLATION AND RETAIN UNTIL CONTINUING PIPING OR EQUIPMENT CONNECTION ARE COMPLETED.
- INSTALL DRIP LEGS IN GAS PIPING AS REQUIRED BY 2015 NYS FUEL GAS CODE.
- TEST NATURAL GAS PIPING IN ACCORDANCE WITH ANSI AND 2015 NYS FUEL GAS CODE.
- THE ENTIRE INSTALLATION SHALL BE GUARANTEED AND SERVICED FOR A PERIOD OF ONE YEAR FROM THE DATE OF FINAL ACCEPTANCE OF THE INSTALLATION BY THE OWNER.
- THE CONTRACTOR SHALL DURING THE PERIOD OF THE GUARANTEE REPLACE OR REPAIR AT HIS OWN EXPENSE ANY PIECE OF EQUIPMENT AND/OR MATERIAL WHICH IS FOUND TO BE DEFECTIVE. THE REPLACEMENT OR REPAIRMENT SHALL BE DONE AS SOON AS NOTIFIED.
- ALL NEW EQUIPMENT SHALL BE HOOKED UP BY THIS CONTRACTOR. CONTRACTOR SHALL FURNISH AND INSTALL ALL REQUIRED VALVES, FITTINGS, ETC. NECESSARY FOR THE COMPLETE HOOK UP, AND TO PROVIDE PROPER OPERATION OF EACH PIECE OF EQUIPMENT IN COORDINATION WITH THE GENERAL CONTRACTOR AND ELECTRICAL CONTRACTOR.
- ALL UNDERGROUND NATURAL GAS PIPES SHALL BE SDR-11, HIGH DENSITY POLYETHYLENE PIPE (HDPE).
- ALL ABOVE GROUND NATURAL GAS PIPES SHALL BE SCHEDULE 40 BLACK STEEL PIPE, PAINTED YELLOW.
- ANY FEES/CHARGES IMPOSED BY THE UTILITY TO INSTALL THE GENERATORS ARE THE RESPONSIBILITY OF THE CONTRACTOR.

GENERAL SITE WORK NOTES (CAUTION TO CONTRACTOR):

- CONTRACTOR IS RESPONSIBLE FOR LOCATING EXISTING UNDERGROUND UTILITIES (MARKUP) IN AREAS TO BE TRENCHED AND GENERATOR LOCATION. VERIFY EXACT ROUTING IN FIELD PRIOR TO ANY EXCAVATION WORK. HAND EXCAVATION MAY BE REQUIRED DUE TO EXISTING UNDERGROUND UTILITIES.
- THE CONTRACTOR SHALL BE RESPONSIBLE FOR INVESTIGATING AND VERIFYING THE ACTUAL LOCATION AND DEPTH OF ALL EXISTING UNDERGROUND UTILITIES IN ADVANCE OF THE PERFORMANCE OF ANY WORK. ANY EXISTING UTILITIES THAT ARE DAMAGED BY THE CONTRACTOR'S WORK SHALL BE REPAIRED AT CONTRACTOR'S COST WHETHER OR NOT UTILITIES ARE INDICATED ON PLANS.
- RESTORE ALL PAVEMENT, SIDEWALK AND LANDSCAPE EXCAVATED TO ORIGINAL CONDITION. THE EXTENT OF RESTORATION IS NOT LIMITED TO WHAT IS SHOWN ON PLANS. RESTORE ALL SURFACES DISTURBED DURING EXCAVATION TO ORIGINAL CONDITION. PROVIDE SODDING FOR ENTIRE GRASS AREAS DISTURBED DURING TRENCHING AND RESTORATION.
- CONTRACTOR MUST HIRE AND PAY FOR AN INDEPENDENT UNDERGROUND UTILITY MARKUP COMPANY FOR IDENTIFICATION OF ALL EXISTING UNDERGROUND UTILITIES, CONDUITS, PIPING, SANITARY WELLS, ETC. IN THE PROPERTY AND STREET AS REQUIRED, BEFORE ANY EXCAVATION AND TRENCHING WORK. IN ADDITION CONTRACTOR MUST CALL DIG SAFELY NEW YORK AT (811) OR 1-800-272-4480 FOR IDENTIFICATION OF ALL UNDERGROUND PUBLIC UTILITIES AS REQUIRED. SUBMIT RESULTS FOR EACH SITE TO OWNER AND ENGINEER FOR REVIEW.

OPTIONAL STANDBY GENERATOR SCHEDULE

SYMBOL	LOCATION	EQUIPMENT DESCRIPTION	FUEL TYPE	NATURAL GAS FUEL CONSUMPTION RATE, CFH	MANUFACTURER & MODEL NUMBER
G1	VILLAGE HALL VILLAGE OF SUFFERN (BID ALTERNATE NO. 1)	STANDBY NATURAL GAS GENERATOR SET. 175KW, 208/120VAC, 3PH, 4W, 60HZ, WITH 800A, 100% RATED MAIN THERMAL MAGNETIC CIRCUIT BREAKER, BATTERY, BATTERY CHARGER, LEVEL 2 ACOUSTIC ENCLOSURE AND LOAD CENTER.	NATURAL GAS PRESSURE: 7"-11"H2O	2340	GENERAC INDUSTRIAL POWER: SG175, 14.2L (OR APPROVED EQUAL)
G2	SUFFERN DPW GARAGE	STANDBY NATURAL GAS GENERATOR SET. 50KW, 208/120VAC, 3PH, 4W, 60HZ, WITH 225A 100% RATED MAIN THERMAL MAGNETIC CIRCUIT BREAKER, BATTERY, BATTERY CHARGER, LEVEL 2 ACOUSTIC ENCLOSURE AND LOAD CENTER.	NATURAL GAS PRESSURE: 7"-11"H2O	879	GENERAC INDUSTRIAL POWER: SG050, 5.4L (OR APPROVED EQUAL)

GENERAL PLUMBING NOTES

- EACH BIDDER SHALL VISIT THE SITE AND BECOME INFORMED AS TO THE CONDITION OF THE PREMISES AND THE EXTENT AND CHARACTER OF WORK REQUIRED. NO ADDITIONAL COMPENSATION WILL BE APPROVED DUE TO THE FIELD CONDITIONS.
- ALL EXISTING SYSTEMS SHALL BE LEFT IN PERFECT WORKING ORDER UPON COMPLETION OF ALL NEW WORK.
- EXACT SIZES AND LOCATIONS OF ALL EXISTING PIPING SHALL BE VERIFIED ON THE SITE.
- NO REMOVED EXISTING PIPING SHALL BE REUSED UNLESS OTHERWISE INDICATED.
- THIS CONTRACTOR SHALL NOT INTERRUPT ANY OF THE SERVICES OF THE EXISTING BUILDING NOR INTERFERE WITH THE SERVICES IN ANY WAY WITHOUT THE EXPRESSED PERMISSION OF THE OWNER. SUCH INTERRUPTIONS AND INTERFERENCES SHALL BE MADE AS BRIEF AS POSSIBLE AND ONLY AS PERMITTED BY THE OWNER.
- UNDER NO CIRCUMSTANCES WILL THIS CONTRACTOR OR HIS OR HER WORKMEN BE PERMITTED TO USE ANY PART OF THE BUILDING AS A SHOP, EXCEPT AS DESIGNATED BY THE OWNER FOR SUCH PURPOSES.
- UNNECESSARY NOISE SHALL BE AVOIDED AT ALL TIMES AND NECESSARY NOISE SHALL BE REDUCED TO A MINIMUM.
- THIS CONTRACTOR SHALL ARRANGE ALL SERVICE CONNECTION WORK TO BE DONE CONTINUOUSLY, INCLUDING OVERTIME AS REQUIRED, TO ASSURE THAT SERVICES WILL BE SHUT DOWN AND CUT-INS TO MAKE THE NECESSARY CONNECTION TO EXISTING AND RESTORED WORK IN ONE CONTINUOUS SESSION. COORDINATE AND ARRANGE WITH OWNER PROJECT MANAGER.
- THIS CONTRACTOR SHALL GIVE AMPLE WRITTEN NOTICE IN ADVANCE TO THE OWNER OF ANY REQUIRED SHUT DOWNS.
- CONTRACTOR SHALL CHECK AND VERIFY THE EXACT LOCATION OF ALL PIPE PENETRATIONS, PIPE ELEVATIONS, ETC.
- THIS CONTRACTOR SHALL PROVIDE ALL WORK AS INDICATED ON THE DRAWINGS. COORDINATE EXACT ROUTING OF PIPING IN THE FIELD WITH EXISTING CONDITIONS AND WORK OF OTHER TRADES. ALL WORK SHALL BE SCHEDULED AND COORDINATED TO ACCOMMODATE OWNER.
- ASBESTOS ABATEMENT IS NOT PART OF THIS CONTRACT.

LIST OF DRAWINGS:

DRAWING NO.	DRAWING TITLE
P-1	PLUMBING GENERAL NOTES AND SCHEDULES
P-2	PLUMBING SUFFERN VILLAGE HALL FLOOR & SITE PLANS
P-3	PLUMBING SUFFERN VILLAGE HALL GAS RISER DIAGRAM
P-4	PLUMBING SUFFERN VILLAGE HALL & DPW GAS RISER DIAGRAM
P-5	PLUMBING DETAILS



VILLAGE OF SUFFERN

THESE DOCUMENTS CONTAIN POTENTIALLY SENSITIVE INFORMATION AND SHALL BE USED FOR THEIR INTENDED PURPOSE. ONCE THE INTENDED PURPOSE HAS CEASED, THE DOCUMENTS SHALL BE DESTROYED IN A SECURE MANNER.

IT IS A VIOLATION OF STATE EDUCATION LAW FOR ANY PERSON, UNLESS UNDER THE DIRECTION OF A LICENSED ARCHITECT/ENGINEER TO ALTER THIS DOCUMENT IN ANYWAY. ALTERATIONS MUST HAVE THE SEAL AFFIXED ALONG WITH A DESCRIPTION OF THE ALTERATIONS, DATE AND ARCHITECT/ENGINEER'S SIGNATURE. COPYRIGHT © 2015



600 PARSIPPANY ROAD, SUITE 301
PARSIPPANY, NJ 07054
PHONE: 973.739.9400
FAX: 973.739.9710

NSE

NS Engineers, P.C.

51 West Prospect Street, 2nd Floor
East Brunswick, NJ 08816
Phone: (732) 254-1163
Fax: (732) 254-1266

REVISIONS

Rev No	Description	Date
1		
2		
3		
4		

New York Rising Community Reconstruction Program



GOSR

Governor's Office of Storm Recovery

Project Title

GOSR Program

GENERATOR REPLACEMENT

VILLAGE OF SUFFERN

ROCKLAND COUNTY, NEW YORK

Drawing Title

PLUMBING
GENERAL NOTES AND
SCHEDULES

Phase

BID SET

Drawn By: JJ
Checked By: NS
Date: 05/21/2021

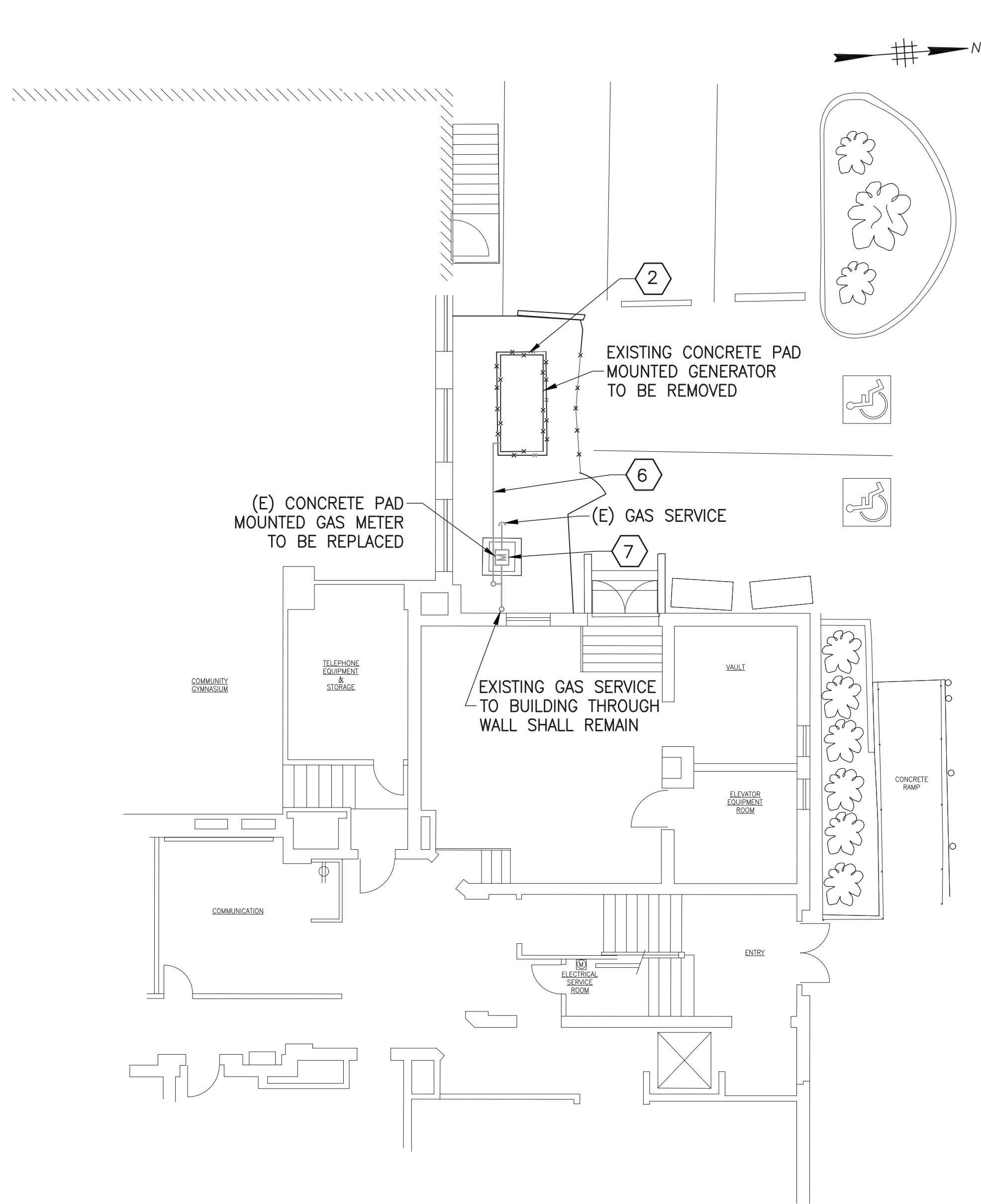
Seal & Signature



Drawing Number

P-1

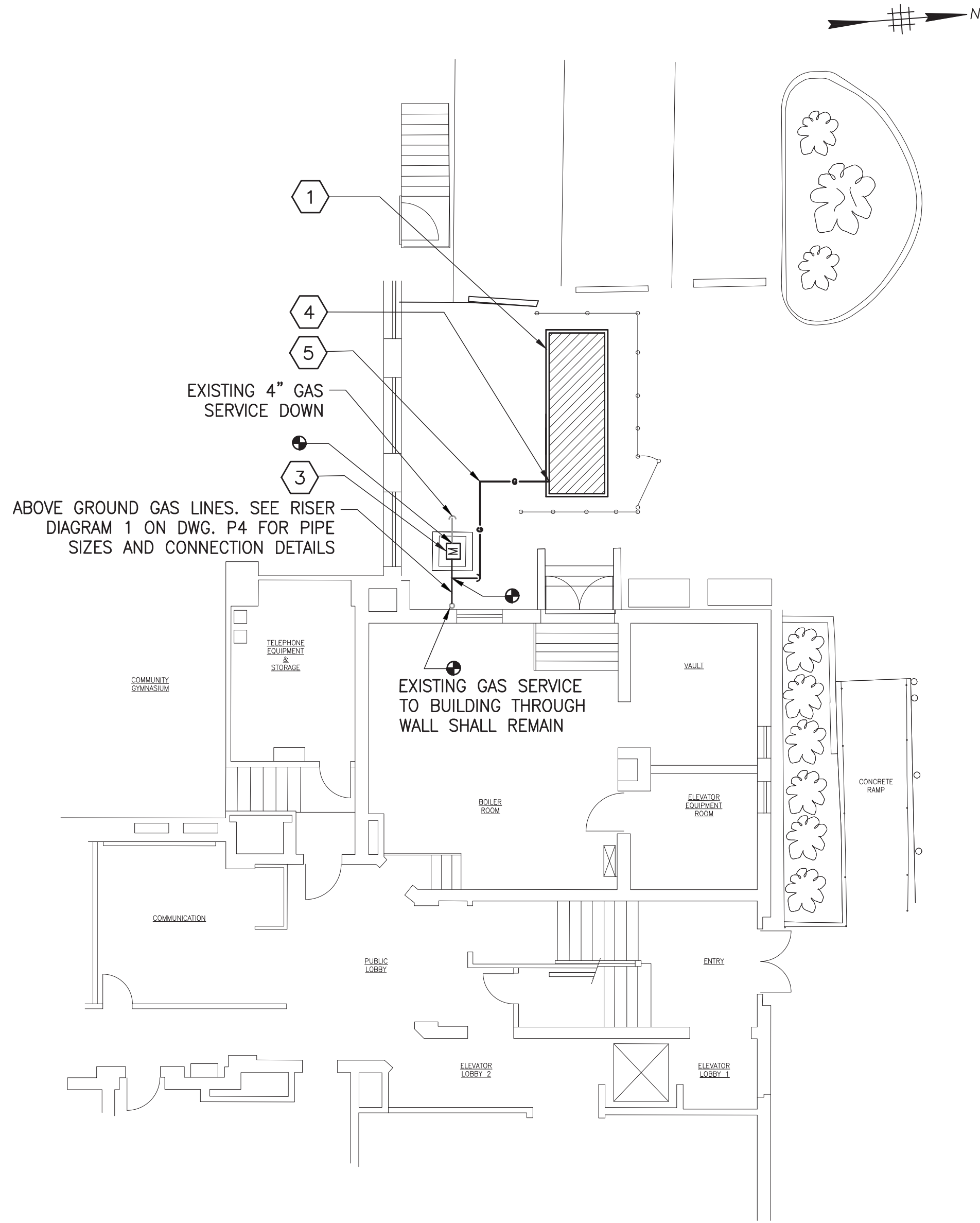
Sheet #
9 of 15



1
P-2

VILLAGE HALL FIRST FLOOR AND SITE DEMOLITION PLAN

SCALE: N.T.S



2
P-2

VILLAGE HALL FIRST FLOOR AND SITE PROPOSED PLAN

SCALE: N.T.S

SITE PLAN NOTES:

- FOR GENERAL NOTES, SYMBOLS AND ABBREVIATIONS REFER TO DRAWING NO. P-001. FOR GENERATOR SCHEDULE REFER TO DRAWING NO. E-1.
- PROVIDE FACTORY ASSEMBLED ANODELESS RISER TRANSITION FITTINGS FROM UNDERGROUND HDPE PIPE TO ABOVE GROUND STEEL PIPING.
- SEE NATURAL GAS PIPE RISER DIAGRAM 1 ON DWG. P-4.
- SEE DETAIL 2 ON DWG. P-5 FOR THE UNDERGROUND PIPING TRENCH DETAIL.
- SEE DETAIL 1 ON DWG. P-5 FOR GAS TRAIN PIPING.

DRAWING PLAN KEY NOTES:

- PROPOSED G1, 175KW STANDBY GENERATOR LOCATED ON CONCRETE PAD. FINAL LOCATION TO BE COORDINATED WITH THE BUILDING OWNER, PRIOR TO ANY INSTALLATION WORK. SEE GENERATOR SCHEDULE ON DWG. P-1. SEE DETAIL 1 AND 2 ON DWG. S-2 FOR GENERATOR BASE CONCRETE PAD.
- EXISTING GENERATOR SHALL BE REMOVED BY ELECTRICAL CONTRACTOR. PLUMBING CONTRACTOR SHALL REMOVE ALL ASSOCIATED GAS PIPING. PROVIDE TEMPORARY GAS PIPING AS REQUIRED TO KEEP THE EXISTING GENERATOR OPERATIONAL, UNTIL PROPOSED GENERATOR IS INSTALLED AND OPERATIONAL.
- UPGRADE GAS METER AS PER UTILITY COMPANY REQUIREMENTS. COORDINATE WITH UTILITY COMPANY. PROVIDE PRESSURE REGULATORS IN COMPLIANCE WITH SECTION FG-410 OF NYSFGC. PROVIDE GENERATOR GAS TRAIN IN COMPLIANCE WITH NFPA 37 AND GENERATOR MANUFACTURER'S REQUIREMENTS. SEE RISER DIAGRAM 1 ON DWG. P-4 FOR PIPE SIZES AND CONNECTION DETAILS.
- PROVIDE GAS SHUT-OFF VALVE ADJACENT TO GENERATOR ENCLOSURE.
- PROVIDE FROM THE GAS METER TO THE GENERATOR, 3" HDPE PIPE WITH PIPE SLEEVE FOR UNDERGROUND PORTION OF THE PIPE AND 3" SCHEDULE 40 BLACK STEEL PIPE FOR ABOVE GROUND PORTION OF THE PIPE. MAKE FINAL CONNECTION TO THE GENERATOR USING FUEL LINE FLEXIBLE PIPE SUPPLIED BY THE GENERATOR MANUFACTURER. PROVIDE PIPE REDUCER AS REQUIRED. FOLLOW GENERATOR MANUFACTURER'S INSTALL MANUAL. SEE DETAIL 2 ON DWG. P-5 FOR THE UNDERGROUND PIPING TRENCH DETAIL.
- AFTER THE NEW GENERATOR G1 HAS BEEN INSTALLED, TESTED AND MADE OPERATIONAL REMOVE THE EXISTING 2" GAS LINE SERVING THE EXISTING 35 KW GENERATOR AND CAP THE LINE AT THE METER. PROVIDE TEMPORARY GAS PIPING AS REQUIRED TO KEEP THE EXISTING GENERATOR OPERATIONAL, UNTIL PROPOSED GENERATOR IS INSTALLED AND OPERATIONAL.
- REMOVE EXISTING GAS METER AND ASSOCIATED VALVES. REPLACE WITH UPDATED GAS METER, ALONG WITH NEW SHUT OF VALVES AND GENERATOR GAS REGULATOR. SEE GAS RISER DIAGRAM NO. 1 ON DRAWING P-4.

BID ALTERNATE NO. 1



VILLAGE OF SUFFERN

THESE DOCUMENTS CONTAIN POTENTIALLY SENSITIVE INFORMATION AND SHALL BE USED FOR THEIR INTENDED PURPOSE. ONCE THE INTENDED PURPOSE HAS CEASED, THE DOCUMENTS SHALL BE DESTROYED IN A SECURE MANNER.

IT IS A VIOLATION OF STATE EDUCATION LAW FOR ANY PERSON, UNLESS UNDER THE DIRECTION OF A LICENSED ARCHITECT/ENGINEER TO ALTER THIS DOCUMENT IN ANYWAY. ALTERATIONS MUST HAVE THE SEAL, APPROVED ALONG WITH A DESCRIPTION OF THE ALTERATIONS, DATE AND ARCHITECT/ENGINEER'S SIGNATURE. COPYRIGHT © 2015

Dewberry
Dewberry Engineers Inc.

600 PARSIPPANY ROAD, SUITE 301
PARSIPPANY, NJ 07054
PHONE: 973.739.9400
FAX: 973.739.9710

NSE

NS Engineers, P.C.
51 West Prospect Street, 2nd Floor
East Brunswick, NJ 08816
Phone: (732) 254-1163
Fax: (732) 254-1266

REVISIONS

Rev No	Description	Date
1		
2		
3		
4		

New York Rising Community
Reconstruction Program



GOSR
Governor's Office of Storm Recovery

Project Title
GOSR Program

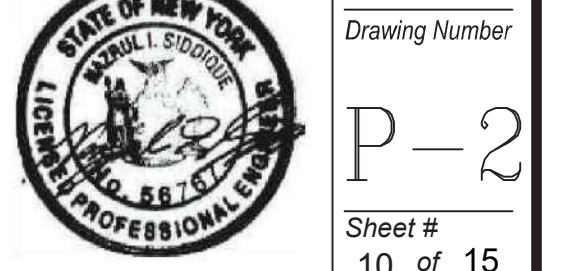
GENERATOR REPLACEMENT
VILLAGE OF SUFFERN
ROCKLAND COUNTY, NEW YORK

Drawing Title
**PLUMBING
SUFFERN VILLAGE HALL
FLOOR & SITE PLANS**

Phase
BID SET

Drawn By: **JJ** Checked By: **NS** Date: **05/21/2021**

Seal & Signature

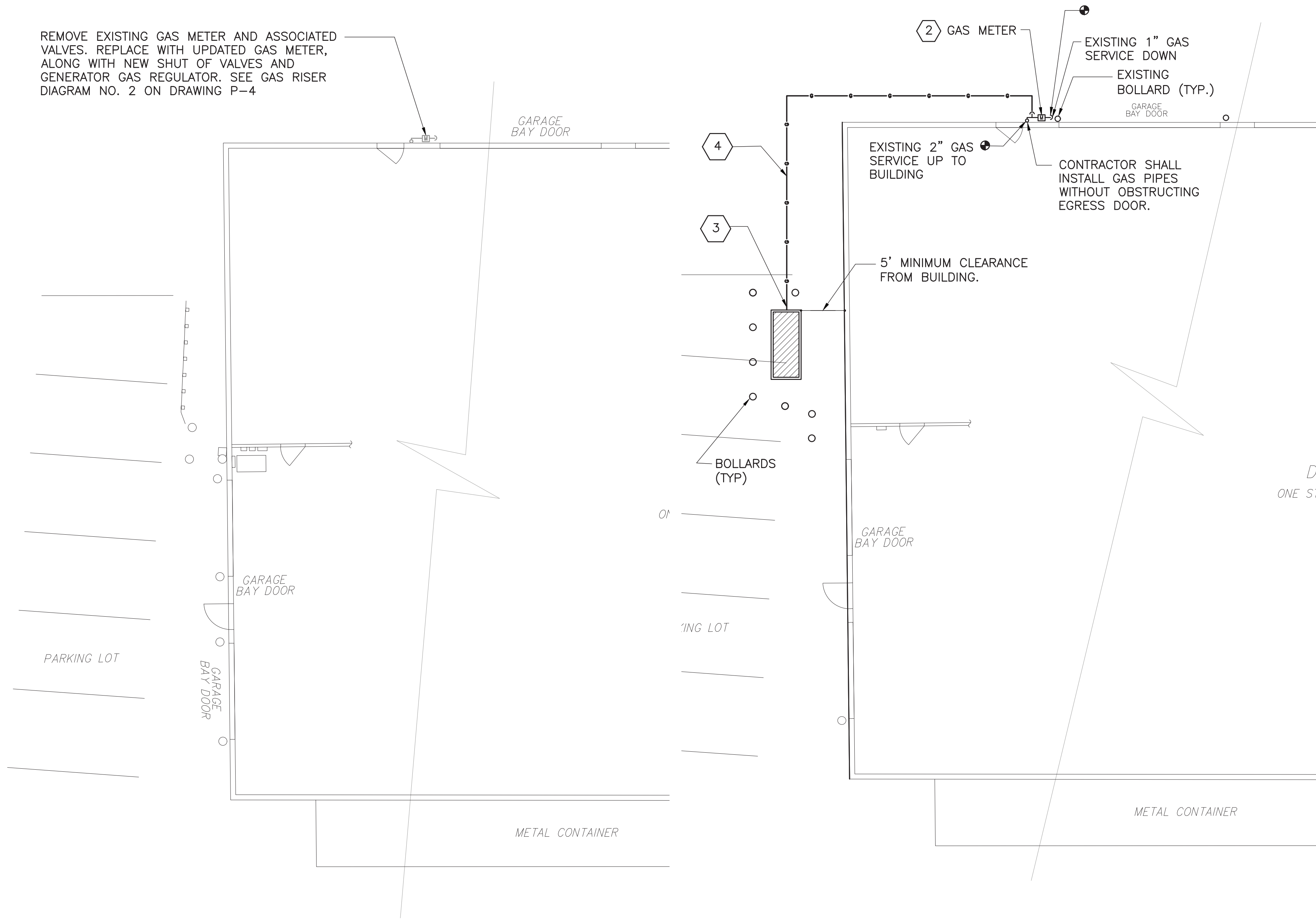


Drawing Number

P-2

Sheet #
10 of 15

REMOVE EXISTING GAS METER AND ASSOCIATED VALVES. REPLACE WITH UPDATED GAS METER, ALONG WITH NEW SHUT OFF VALVES AND GENERATOR GAS REGULATOR. SEE GAS RISER DIAGRAM NO. 2 ON DRAWING P-4



GENERAL NOTES:

1. FOR GENERAL NOTES, SYMBOLS, ABBREVIATIONS AND EQUIPMENT SCHEDULE REFER TO DRAWING NO. P-1.
2. SEE DWG. S-1 FOR PAVEMENT RESTORATION DETAILS.

DRAWING PLAN KEY NOTES:

1. PROPOSED G2, 208/120V, 3-PHASE, 4-WIRE, 50KW OPTIONAL STANDBY GENERATOR ON CONCRETE PAD. SEE DETAIL 1 & 2 ON DWG. S-2 FOR GENERATOR BASE CONCRETE PAD.
2. UPGRADE GAS METER. PROVIDE GAS REGULATOR FOR GENERATOR FUEL LINE. SEE RISER DIAGRAM 2 ON DWG. P-4 FOR PIPE SIZES AND CONNECTION DETAILS. COORDINATE WITH UTILITY COMPANY.
3. PROVIDE GAS SHUT-OFF VALVE ADJACENT TO GENERATOR ENCLOSURE.
4. PROVIDE FROM THE GAS METER TO THE GENERATOR, 2-1/2" HDPE PIPE WITH PIPE SLEEVE FOR UNDERGROUND PORTION OF THE PIPE AND 2-1/2" SCHEDULE 40 BLACK STEEL PIPE FOR ABOVE GROUND PORTION OF THE PIPE. MAKE FINAL CONNECTION TO THE GENERATOR USING FUEL LINE FLEXIBLE PIPE SUPPLIED BY THE GENERATOR MANUFACTURER. PROVIDE PIPE REDUCER AS REQUIRED. FOLLOW GENERATOR MANUFACTURER'S INSTALL MANUAL. SEE DETAIL 3 ON DWG. P-5 FOR THE UNDERGROUND PIPING TRENCH DETAIL.

1 DPW GARAGE DEMOLITION PLAN
SCALE: 1/8"=1'-0"

2 DPW GARAGE PROPOSED PLAN
SCALE: 1/8"=1'-0"



VILLAGE OF SUFFERN

THESE DOCUMENTS CONTAIN POTENTIALLY SENSITIVE INFORMATION AND SHALL BE USED FOR THEIR INTENDED PURPOSE. ONCE THE INTENDED PURPOSE HAS CEASED, THE DOCUMENTS SHALL BE DESTROYED IN A SECURE MANNER.

IT IS A VIOLATION OF STATE EDUCATION LAW FOR ANY PERSON, UNLESS UNDER THE DIRECTION OF A LICENSED ARCHITECT/ENGINEER TO ALTER THIS DOCUMENT IN ANYWAY. ALTERATIONS MUST HAVE THE SEAL APPLIED ALONG WITH A DESCRIPTION OF THE ALTERATIONS, DATE AND ARCHITECT'S/ENGINEER'S SIGNATURE. COPYRIGHT © 2015



Dewberry Engineers Inc.

600 PARSIPPANY ROAD, SUITE 301
PARSIPPANY, NJ 07054
PHONE: 973.739.9400
FAX: 973.739.9710

NSE

NS Engineers, P.C.

51 West Prospect Street, 2nd Floor
East Brunswick, NJ 08816
Phone: (732) 254-1163
Fax: (732) 254-1266

REVISIONS

Rev No	Description	Date
1		
2		
3		
4		

New York Rising Community Reconstruction Program



GOSR

Governor's Office of Storm Recovery

Project Title

GOSR Program

GENERATOR REPLACEMENT

VILLAGE OF SUFFERN

ROCKLAND COUNTY, NEW YORK

Drawing Title

**PLUMBING
SUFFERN DPW GARAGE
FLOOR & SITE PLANS**

Phase

BID SET

Drawn By: **JJ** Checked By: **NS** Date: **05/21/2021**

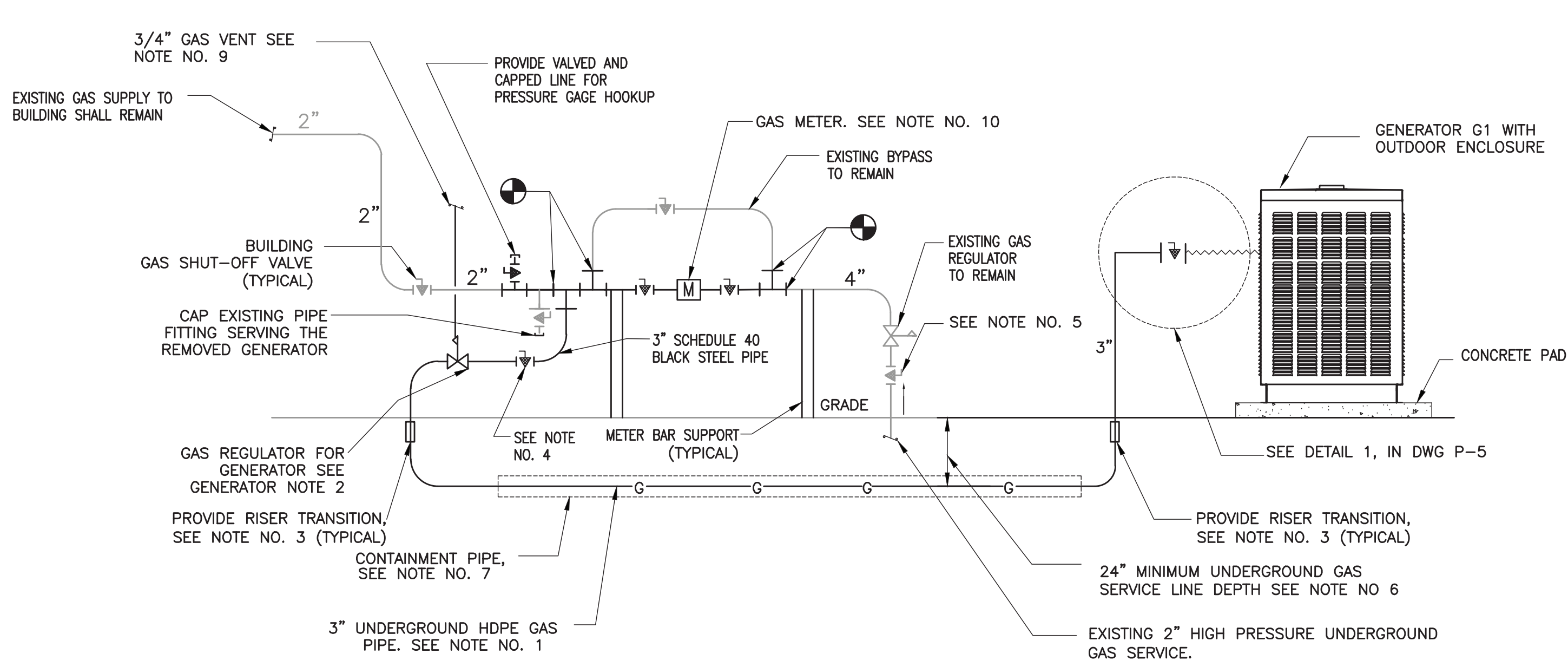
Seal & Signature



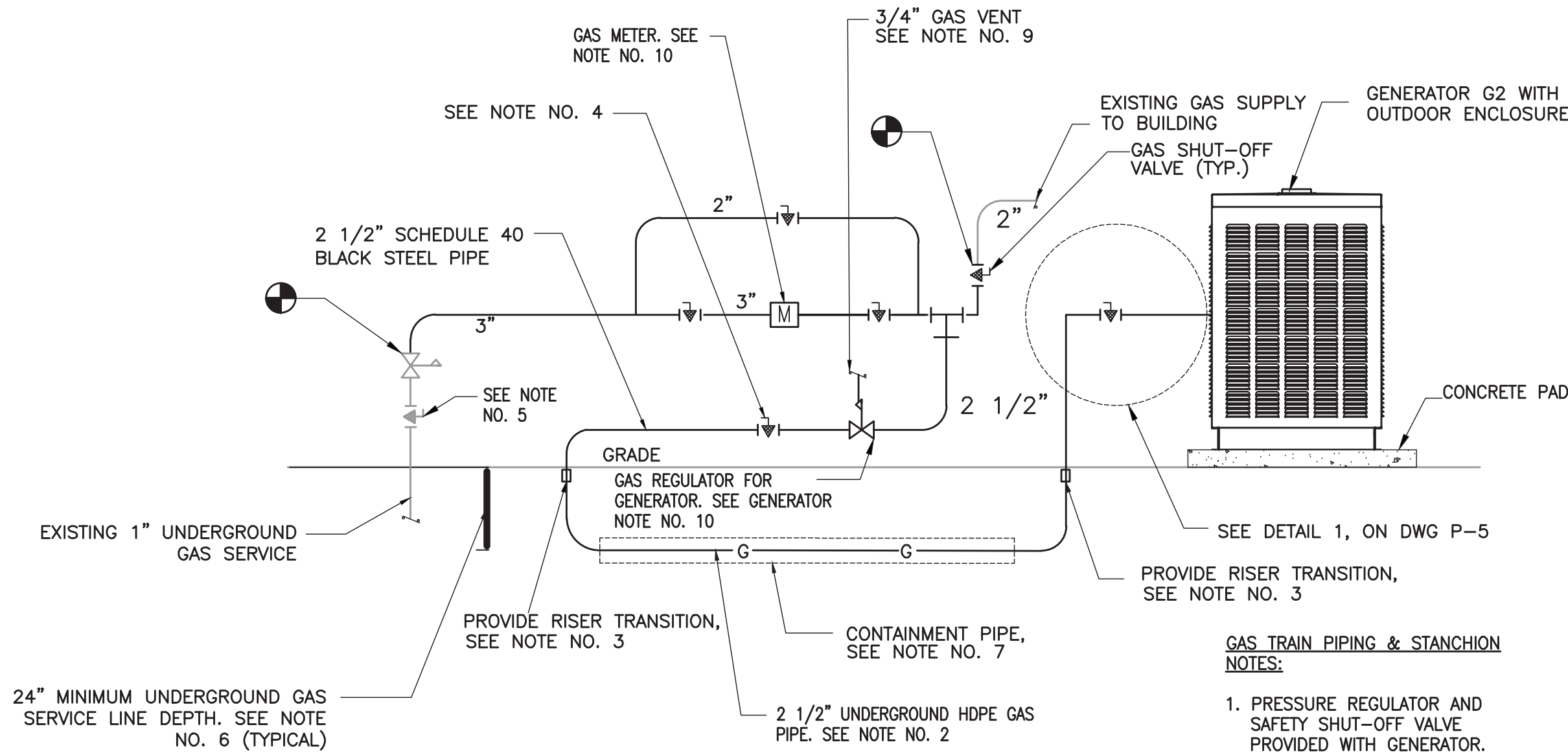
Drawing Number

P-3

Sheet #
11 of 15



1 VILLAGE HALL NATURAL GAS RISER DIAGRAM
P-4 (BID ALTERNATE NO. 1)
SCALE: NTS



2 DPW NATURAL GAS RISER DIAGRAM
P-4 SCALE: NTS

NATURAL GAS PIPE NOTES:

- FOR THE VILLAGE HALL GENERATION G1 PROVIDE FROM THE GAS METER TO THE GENERATOR, 3" HDPE PIPE WITH PIPE SLEEVE FOR UNDERGROUND PORTION OF THE PIPE AND 3" SCHEDULE 40 BLACK STEEL PIPE FOR ABOVE GROUND PORTION OF THE PIPE. MAKE FINAL CONNECTION TO THE GENERATOR USING FUEL LINE FLEXIBLE PIPE SUPPLIED BY THE GENERATOR MANUFACTURER. PROVIDE PIPE REDUCER AS REQUIRED. FOLLOW GENERATOR MANUFACTURER'S INSTALLATION MANUAL.
- FOR THE DPW BUILDING GENERATION G2 PROVIDE FROM THE GAS METER TO THE GENERATOR, 2 1/2" HDPE PIPE WITH PIPE SLEEVE FOR UNDERGROUND PORTION OF THE PIPE AND 2 1/2" SCHEDULE 40 BLACK STEEL PIPE FOR ABOVE GROUND PORTION OF THE PIPE. MAKE FINAL CONNECTION TO THE GENERATOR USING FUEL LINE FLEXIBLE PIPE SUPPLIED BY THE GENERATOR MANUFACTURER. PROVIDE PIPE REDUCER AS REQUIRED. FOLLOW GENERATOR MANUFACTURER'S INSTALLATION MANUAL.
- PROVIDE FACTORY ASSEMBLED ANODELESS RISER TRANSITION FITTINGS FROM UNDERGROUND HDPE PIPE TO ABOVE GROUND STEEL PIPING.
- PROVIDE SIGNAGE ON THE VALVE INDICATING, GENERATOR GAS SHUTOFF VALVE. THERE IS ANOTHER VALVE SERVING THE BUILDING.
- PROVIDE SIGNAGE ON THE VALVE INDICATING, MAIN GAS SHUTOFF VALVE.
- INSTALL UNDERGROUND, NATURAL-GAS PIPING BURIED AT LEAST 24 INCHES BELOW FINISHED GRADE.
- UNDERGROUND NATURAL GAS PIPING SHALL BE INSTALLED IN 5" PVC SCHEDULE 80 CONTAINMENT PIPE.
- SEE SPECIFICATION SECTION 221123 FOR NATURAL GAS PIPING REQUIREMENTS.
- THE CONTRACTOR SHALL VERIFY WITH THE PRESSURE REGULATOR MANUFACTURERS IF THE SERVICE AND LINE PRESSURE REGULATORS WOULD REQUIRE EXTERNAL VENT PIPING AS SHOWN AND INSTALL AS PER MANUFACTURER'S REQUIREMENTS. INSTALL VENT PIPING WITH A SUITABLE TERMINATION DEVICE (E.G. VENT PROTECTOR) TO PREVENT THE ENTRY OF INSECTS, WATER OR FOREIGN OBJECTS AS REQUIRED PER THE NYS RESIDENTIAL CODE, SECTION 2421.3. TERMINATE THE VENT LINE AT LEAST 18" AWAY FROM ANY BUILDING OPENINGS. GAS PIPE VENT SHALL NOT BE SMALLER THAN THE CONNECTION SIZE AT THE PRESSURE REGULATOR.
- UPGRADE GAS METER AS PER UTILITY COMPANY REQUIREMENTS. COORDINATE WITH UTILITY COMPANY. PROVIDE PRESSURE REGULATORS IN COMPLIANCE WITH SECTION FG-410 OF NYSFGC. PROVIDE GENERATOR GAS TRAIN IN COMPLIANCE WITH NFPA 37 AND GENERATOR MANUFACTURER'S REQUIREMENTS.
- ABOVE GROUND HORIZONTAL PIPING SHALL NOT BE LOCATED BELOW 3-1/2" ABOVE GROUND.

GENERATOR NOTES:

- SEE DWG. P-1 FOR BASIS OF DESIGN GENERATOR MANUFACTURER AND MODEL NUMBERS.
- FOR G1 175KW GENERATOR FUEL CONSUMPTION @ FULL LOAD FOR NATURAL GAS IS 2340 (CU. FT/HR). GENERATOR OPERATING FUEL PRESSURE FOR NATURAL GAS IS 7"-11" WC FOR NATURAL GAS.
- FOR G2 50KW GENERATOR FUEL CONSUMPTION @ FULL LOAD FOR NATURAL GAS IS 879 (CU. FT/HR). GENERATOR OPERATING FUEL PRESSURE IS 7"-11" WC.



VILLAGE OF SUFFERN

THESE DOCUMENTS CONTAIN POTENTIALLY SENSITIVE INFORMATION AND SHALL BE USED FOR THEIR INTENDED PURPOSE. ONCE THE INTENDED PURPOSE HAS CEASED, THE DOCUMENTS SHALL BE DESTROYED IN A SECURE MANNER.

IT IS A VIOLATION OF STATE EDUCATION LAW FOR ANY PERSON, UNLESS UNDER THE DIRECTION OF A LICENSED ARCHITECT/ENGINEER TO ALTER THIS DOCUMENT IN ANYWAY. ALTERATIONS MUST HAVE THE SEAL ADDED ALONG WITH A DESCRIPTION OF THE ALTERATIONS, DATE AND ARCHITECT/ENGINEER'S SIGNATURE. COPYRIGHT © 2015

Dewberry
Dewberry Engineers Inc.

600 PARSIPPANY ROAD, SUITE 301
PARSIPPANY, NJ 07054
PHONE: 973.739.9400
FAX: 973.739.9710

NSE

NS Engineers, P.C.

51 West Prospect Street, 2nd Floor
East Brunswick, NJ 08816
Phone: (732) 254-1163
Fax: (732) 254-1266

REVISIONS

Rev No	Description	Date
1		
2		
3		
4		

New York Rising Community
Reconstruction Program



GOSR

Governor's Office of Storm Recovery

Project Title

GOSR Program

GENERATOR REPLACEMENT

VILLAGE OF SUFFERN

ROCKLAND COUNTY, NEW YORK

Drawing Title

PLUMBING
SUFFERN VILLAGE HALL & DPW
GAS RISER DIAGRAM

Phase

BID SET

Drawn By: JJ NS Date: 05/21/2021

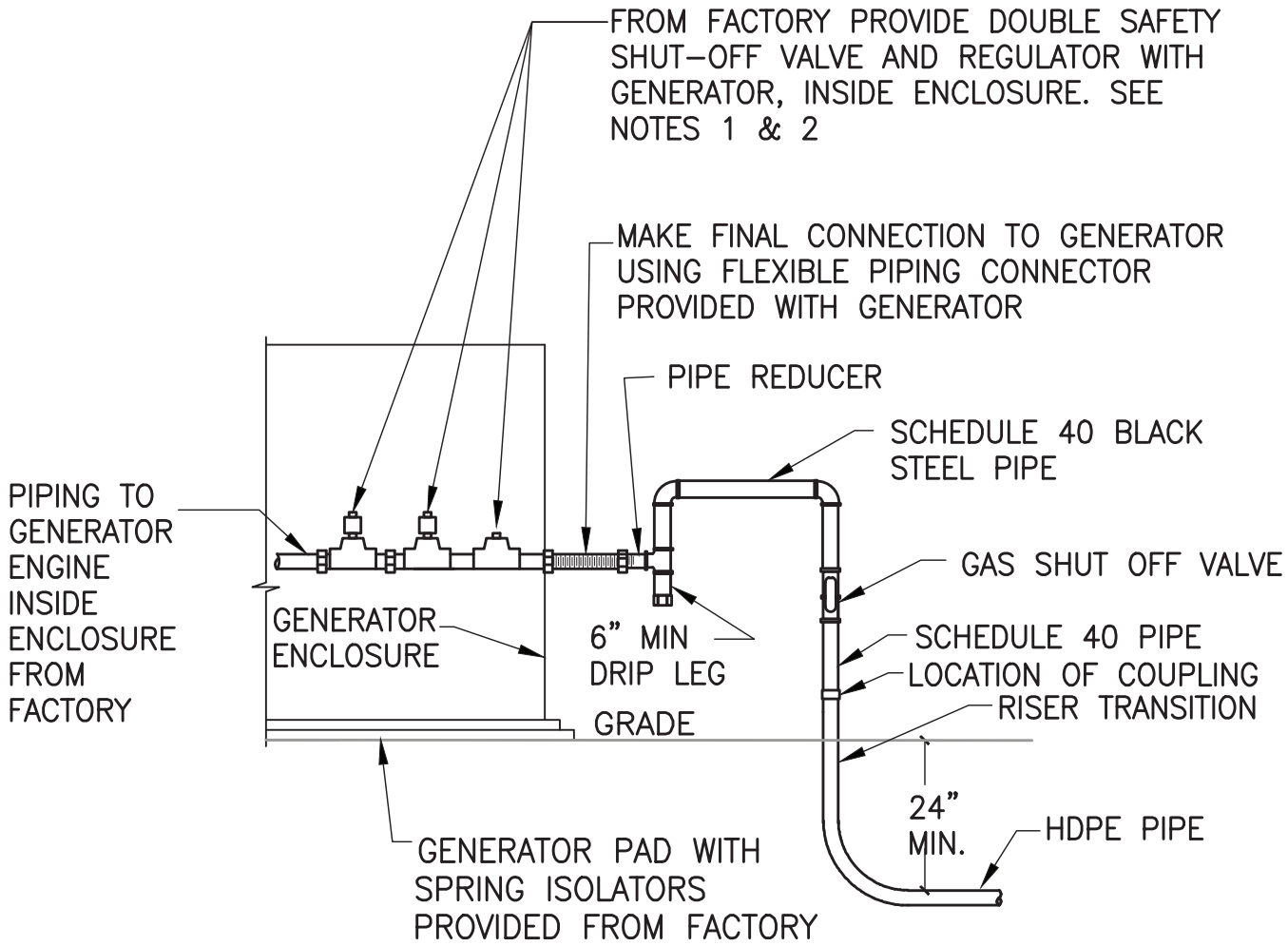
Seal & Signature



Drawing Number

P-4

Sheet #
12 of 15



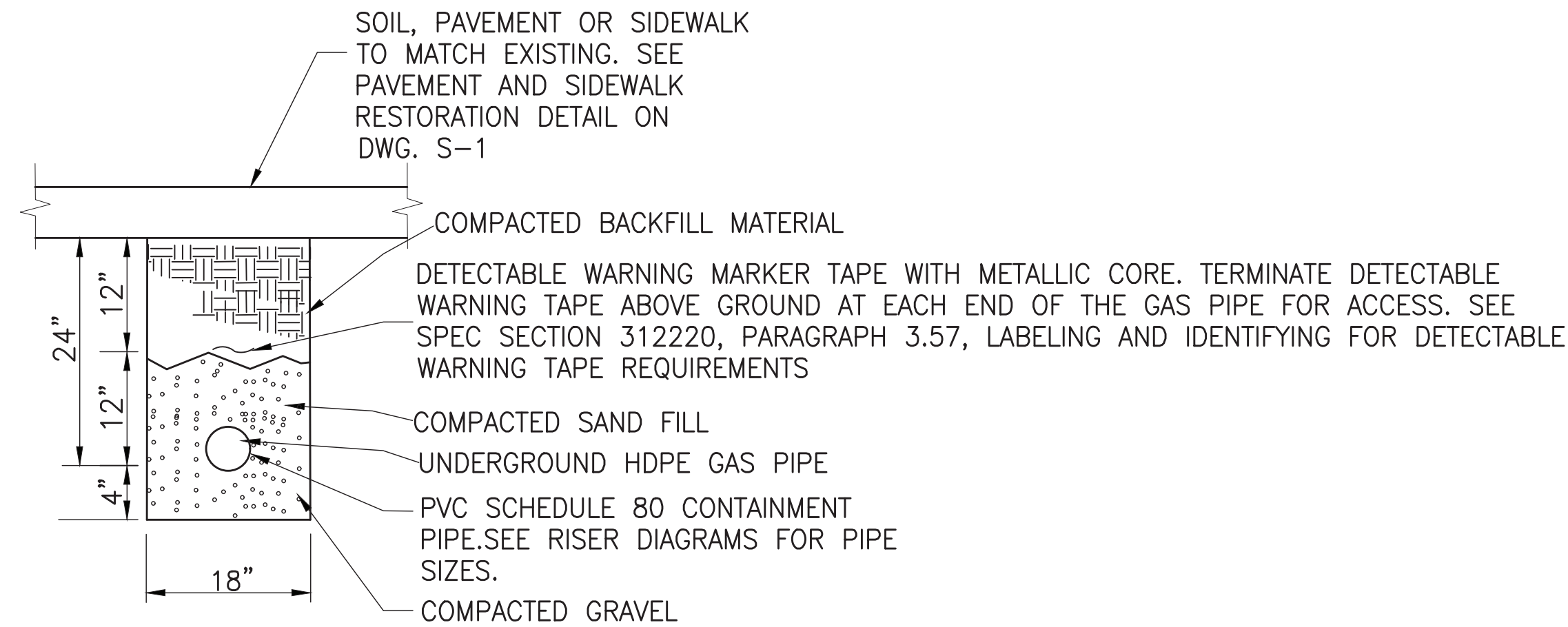
1
P-5

NATURAL GAS TRAIN PIPING & STANCHION DETAIL

SCALE: N.T.S

GAS TRAIN PIPING & STANCHION NOTES:

1. PRESSURE REGULATOR AND SAFETY SHUT-OFF VALVE PROVIDED WITH GENERATOR.
2. SAFETY SHUT-OFF VALVES WILL BE PROVIDED WITH AN INTEGRAL LEAK TEST PORT.
3. PROVIDE A GAS FILTER OR STRAINER.



2
P-5

NATURAL GAS PIPING TRENCH DETAIL

SCALE: N.T.S



VILLAGE OF SUFFERN

THESE DOCUMENTS CONTAIN POTENTIALLY SENSITIVE INFORMATION AND SHALL BE USED FOR THEIR INTENDED PURPOSE. ONCE THE INTENDED PURPOSE HAS CEASED, THE DOCUMENTS SHALL BE DESTROYED IN A SECURE MANNER.

IT IS A VIOLATION OF STATE EDUCATION LAW FOR ANY PERSON, UNLESS UNDER THE DIRECTION OF A LICENSED ARCHITECT/ENGINEER TO ALTER THIS DOCUMENT IN ANYWAY. ALTERATIONS MUST HAVE THE SEAL APPLIED ALONG WITH A DESCRIPTION OF THE ALTERATIONS, DATE AND ARCHITECT/ENGINEER'S SIGNATURE. COPYRIGHT © 2015



Dewberry Engineers Inc.

600 PARSIPPANY ROAD, SUITE 301
PARSIPPANY, NJ 07054
PHONE: 973.739.9400
FAX: 973.739.9710

NSE

NS Engineers, P.C.

51 West Prospect Street, 2nd Floor
East Brunswick, NJ 08816
Phone: (732) 254-1163
Fax: (732) 254-1266

REVISIONS

Rev No	Description	Date
1		
2		
3		
4		

New York Rising Community Reconstruction Program



GOSR

Governor's Office of Storm Recovery

Project Title

GOSR Program

GENERATOR REPLACEMENT

VILLAGE OF SUFFERN

ROCKLAND COUNTY, NEW YORK

Drawing Title

PLUMBING DETAILS

Phase

BID SET

Drawn By: JJ
Checked By: NS
Date: 05/21/2021

Seal & Signature



Drawing Number

P-5

Sheet #
13 of 15