

HYDRANT FLOW TEST		SYMBOLS AND ABBREVIATIONS		SYMBOLS AND ABBREVIATIONS																																																																																																																																																																									
A. PRIOR TO FILING FIRE PROTECTION DRAWINGS, THE CONTRACTOR SHALL ARRANGE FOR A NEW/CURRENT FLOW TEST IN THE VICINITY OF THE BUILDING.																																																																																																																																																																													
<table><tr><th colspan="2">WATER SUPPLY DATA</th></tr><tr><td>DATE:</td><td>7-30-2021</td></tr><tr><td>PERFORMED BY:</td><td>WESTCHESTER COUNTY</td></tr><tr><td>STATIC PRESSURE AT RESIDUAL FIRE HYDRANT:</td><td>118 PSI</td></tr><tr><td>RESIDUAL PRESSURE AT RESIDUAL FIRE HYDRANT:</td><td>90 PSI</td></tr><tr><td>MEASURED FLOW AT FLOW FIRE HYDRANT:</td><td>780 GPM</td></tr><tr><td colspan="2">NOTES:</td></tr></table>		WATER SUPPLY DATA		DATE:	7-30-2021	PERFORMED BY:	WESTCHESTER COUNTY	STATIC PRESSURE AT RESIDUAL FIRE HYDRANT:	118 PSI	RESIDUAL PRESSURE AT RESIDUAL FIRE HYDRANT:	90 PSI	MEASURED FLOW AT FLOW FIRE HYDRANT:	780 GPM	NOTES:																																																																																																																																																															
WATER SUPPLY DATA																																																																																																																																																																													
DATE:	7-30-2021																																																																																																																																																																												
PERFORMED BY:	WESTCHESTER COUNTY																																																																																																																																																																												
STATIC PRESSURE AT RESIDUAL FIRE HYDRANT:	118 PSI																																																																																																																																																																												
RESIDUAL PRESSURE AT RESIDUAL FIRE HYDRANT:	90 PSI																																																																																																																																																																												
MEASURED FLOW AT FLOW FIRE HYDRANT:	780 GPM																																																																																																																																																																												
NOTES:																																																																																																																																																																													
<table><tr><th colspan="3">DESIGN CRITERIA</th></tr><tr><td>HAZARD CLASSIFICATION<sup>(1)</sup></td><td>DENSITY<sup>(2)</sup></td><td>PROTECTION AREA PER SPRINKLER<sup>(3)</sup></td></tr><tr><td>LIGHT HAZARD</td><td>0.1 GPM / 1500 SQ. FT.</td><td>225 SQ. FT. MAX</td></tr><tr><td>ORDINARY HAZARD GROUP 1</td><td>0.15 GPM / 1500 SQ. FT.</td><td>130 SQ. FT. MAX</td></tr><tr><td colspan="3">NOTES: 1.) HAZARD CLASSIFICATION, DENSITY AND MAX. PROTECTION AREA SHALL BE IN ACCORDANCE WITH NFPA 13 – 2016 RECOMMENDATIONS UNLESS OTHERWISE NOTED. 2.) WHERE REQUIRED BY THE BUILDING DEPARTMENT OR AUTHORITY HAVING JURISDICTION FOR PERMIT, THE ENTIRE SYSTEM SHALL BE HYDRAULICALLY CALCULATED. 3.) THE MINIMUM PRESSURE AT EACH SPRINKLER HEAD SHALL BE 7 PSI. 4.) EQUIVALENT FITTING LENGTHS USED IN HYDRAULIC CALCULATIONS SHALL BE IN ACCORDANCE WITH NFPA 13 – 2016. 5.) DISCHARGE FROM EACH SPRINKLER SHALL NOT BE LESS THAN REQUIRED AREA COVERAGE BY THIS HEAD. AREA COVERAGE PER HEAD SHALL BE DETERMINED IN ACCORDANCE WITH NFPA 13 SECTION 8.6.2.2.1 (2016). 6.) HYDRAULIC CALCULATIONS SHALL BE BROUGHT BACK TO THE CONNECTION TO THE STREET MAIN. FLOW VELOCITY IN SPRINKLER PIPING SHALL NOT EXCEED 20 FEET PER SECOND (FPS). 7.) DESIGN CRITERIA: GARAGE – ORDINARY HAZARD GROUP 1; TOILET ROOM – LIGHT HAZARD.</td></tr></table>		DESIGN CRITERIA			HAZARD CLASSIFICATION <sup>(1)</sup>	DENSITY <sup>(2)</sup>	PROTECTION AREA PER SPRINKLER <sup>(3)</sup>	LIGHT HAZARD	0.1 GPM / 1500 SQ. FT.	225 SQ. FT. MAX	ORDINARY HAZARD GROUP 1	0.15 GPM / 1500 SQ. FT.	130 SQ. FT. MAX	NOTES: 1.) HAZARD CLASSIFICATION, DENSITY AND MAX. PROTECTION AREA SHALL BE IN ACCORDANCE WITH NFPA 13 – 2016 RECOMMENDATIONS UNLESS OTHERWISE NOTED. 2.) WHERE REQUIRED BY THE BUILDING DEPARTMENT OR AUTHORITY HAVING JURISDICTION FOR PERMIT, THE ENTIRE SYSTEM SHALL BE HYDRAULICALLY CALCULATED. 3.) THE MINIMUM PRESSURE AT EACH SPRINKLER HEAD SHALL BE 7 PSI. 4.) EQUIVALENT FITTING LENGTHS USED IN HYDRAULIC CALCULATIONS SHALL BE IN ACCORDANCE WITH NFPA 13 – 2016. 5.) DISCHARGE FROM EACH SPRINKLER SHALL NOT BE LESS THAN REQUIRED AREA COVERAGE BY THIS HEAD. AREA COVERAGE PER HEAD SHALL BE DETERMINED IN ACCORDANCE WITH NFPA 13 SECTION 8.6.2.2.1 (2016). 6.) HYDRAULIC CALCULATIONS SHALL BE BROUGHT BACK TO THE CONNECTION TO THE STREET MAIN. FLOW VELOCITY IN SPRINKLER PIPING SHALL NOT EXCEED 20 FEET PER SECOND (FPS). 7.) DESIGN CRITERIA: GARAGE – ORDINARY HAZARD GROUP 1; TOILET ROOM – LIGHT HAZARD.																																																																																																																																																															
DESIGN CRITERIA																																																																																																																																																																													
HAZARD CLASSIFICATION <sup>(1)</sup>	DENSITY <sup>(2)</sup>	PROTECTION AREA PER SPRINKLER <sup>(3)</sup>																																																																																																																																																																											
LIGHT HAZARD	0.1 GPM / 1500 SQ. FT.	225 SQ. FT. MAX																																																																																																																																																																											
ORDINARY HAZARD GROUP 1	0.15 GPM / 1500 SQ. FT.	130 SQ. FT. MAX																																																																																																																																																																											
NOTES: 1.) HAZARD CLASSIFICATION, DENSITY AND MAX. PROTECTION AREA SHALL BE IN ACCORDANCE WITH NFPA 13 – 2016 RECOMMENDATIONS UNLESS OTHERWISE NOTED. 2.) WHERE REQUIRED BY THE BUILDING DEPARTMENT OR AUTHORITY HAVING JURISDICTION FOR PERMIT, THE ENTIRE SYSTEM SHALL BE HYDRAULICALLY CALCULATED. 3.) THE MINIMUM PRESSURE AT EACH SPRINKLER HEAD SHALL BE 7 PSI. 4.) EQUIVALENT FITTING LENGTHS USED IN HYDRAULIC CALCULATIONS SHALL BE IN ACCORDANCE WITH NFPA 13 – 2016. 5.) DISCHARGE FROM EACH SPRINKLER SHALL NOT BE LESS THAN REQUIRED AREA COVERAGE BY THIS HEAD. AREA COVERAGE PER HEAD SHALL BE DETERMINED IN ACCORDANCE WITH NFPA 13 SECTION 8.6.2.2.1 (2016). 6.) HYDRAULIC CALCULATIONS SHALL BE BROUGHT BACK TO THE CONNECTION TO THE STREET MAIN. FLOW VELOCITY IN SPRINKLER PIPING SHALL NOT EXCEED 20 FEET PER SECOND (FPS). 7.) DESIGN CRITERIA: GARAGE – ORDINARY HAZARD GROUP 1; TOILET ROOM – LIGHT HAZARD.																																																																																																																																																																													
		<table><tr><th>SYMBOL</th><th>ABBREVIATION</th><th>DESCRIPTION</th></tr><tr><td>_____</td><td>EX.</td><td>EXISTING TO REMAIN</td></tr><tr><td>_____</td><td>NEW</td><td>NEW WORK</td></tr><tr><td>_____</td><td>DEM.</td><td>EXISTING TO BE REMOVED</td></tr><tr><td>○_____</td><td>—</td><td>ELBOW UP</td></tr><tr><td>└_____</td><td>—</td><td>ELBOW DOWN</td></tr><tr><td>—○—</td><td>—</td><td>TEE DOWN</td></tr><tr><td>—○—</td><td>—</td><td>TEE UP</td></tr><tr><td>┌_____┐</td><td>—</td><td>PIPE CAP OR FLUSHING CONNECTION</td></tr><tr><td>⌵</td><td>—</td><td>GATE VALVE</td></tr><tr><td>⌵</td><td>—</td><td>OS&amp;Y GATE VALVE</td></tr><tr><td>✂</td><td>—</td><td>BUTTERFLY VALVE</td></tr><tr><td>↯</td><td>—</td><td>CHECK VALVE</td></tr><tr><td>⋈</td><td>—</td><td>UNION</td></tr><tr><td>▬</td><td>—</td><td>TEMPERATURE GAGE</td></tr><tr><td>Ⓣ</td><td>—</td><td>PRESSURE GAGE</td></tr><tr><td>WF</td><td>—</td><td>WATER FLOW SWITCH</td></tr><tr><td>TS</td><td>—</td><td>TAMPER SWITCH</td></tr><tr><td>⌵-I</td><td>—</td><td>INSPECTORS TEST CONNECTION</td></tr><tr><td>▲</td><td>—</td><td>FLOW ARROW</td></tr><tr><td>X</td><td>—</td><td>SPRINKLER GUARD</td></tr><tr><td>O<sub>E</sub> OR ●<sub>E</sub></td><td>—</td><td>EXISTING SPRINKLER TO REMAIN</td></tr><tr><td>Ø OR ✖</td><td>—</td><td>EXISTING SPRINKLER TO BE REMOVED</td></tr><tr><td>●</td><td>—</td><td>NEW PENDENT SPRINKLER, CONCEALED OR EXPOSED AS NOTED.</td></tr><tr><td>○</td><td>—</td><td>NEW UPRIGHT SPRINKLER</td></tr><tr><td>◄</td><td>—</td><td>SIDEWALL SPRINKLER</td></tr><tr><td>⊗</td><td>—</td><td>POINT OF CONNECTION</td></tr><tr><td>⊙</td><td>—</td><td>POINT OF DISCONNECTION</td></tr><tr><td>N1</td><td>—</td><td>HYDRAULIC REFERENCE NODE</td></tr><tr><td>S2</td><td>—</td><td>HYDRAULIC REFERENCE SPRINKLER</td></tr><tr><td>▷</td><td>FDC</td><td>FIRE DEPARTMENT CONNECTION</td></tr><tr><td></td><td>AFF</td><td>ABOVE FINISHED FLOOR</td></tr><tr><td></td><td>AHC</td><td>ABOVE HUNG CEILING</td></tr><tr><td></td><td>ATC</td><td>AT CEILING</td></tr><tr><td></td><td>BFP</td><td>BACKFLOW PREVENTOR</td></tr><tr><td></td><td>DCDA</td><td>DOUBLE CHECK DETECTOR ASSEMBLY</td></tr><tr><td></td><td>DCV</td><td>DOUBLE CHECK VALVE BFP</td></tr><tr><td></td><td>DN.</td><td>DOWN</td></tr><tr><td></td><td>FCA</td><td>FLOOR CONTROL ASSEMBLY</td></tr><tr><td></td><td>FD</td><td>FLOOR DRAIN</td></tr><tr><td></td><td>FLFD</td><td>FUNNEL FLOOR DRAIN</td></tr><tr><td></td><td>GPM</td><td>GALLONS PER MINUTE</td></tr><tr><td></td><td>JP</td><td>JOCKEY PUMP</td></tr><tr><td></td><td>NFPA</td><td>NATIONAL FIRE PROTECTION ASSOCIATION</td></tr><tr><td></td><td>(NO)</td><td>NORMALLY OPEN</td></tr><tr><td></td><td>(NC)</td><td>NORMALLY CLOSED</td></tr><tr><td></td><td>NTS</td><td>NOT TO SCALE</td></tr><tr><td></td><td>PRV</td><td>PRESSURE REDUCING VALVE</td></tr><tr><td></td><td>PSI</td><td>POUNDS PER SQUARE INCH</td></tr><tr><td></td><td>RPZ</td><td>REDUCED PRESSURE ZONE BFP</td></tr><tr><td></td><td>SF</td><td>SQUARE FOOT</td></tr><tr><td></td><td></td><td></td></tr><tr><td></td><td></td><td></td></tr><tr><td></td><td></td><td></td></tr><tr><td></td><td></td><td></td></tr><tr><td></td><td></td><td></td></tr></table>		SYMBOL	ABBREVIATION	DESCRIPTION	_____	EX.	EXISTING TO REMAIN	_____	NEW	NEW WORK	_____	DEM.	EXISTING TO BE REMOVED	○_____	—	ELBOW UP	└_____	—	ELBOW DOWN	—○—	—	TEE DOWN	—○—	—	TEE UP	┌_____┐	—	PIPE CAP OR FLUSHING CONNECTION	⌵	—	GATE VALVE	⌵	—	OS&Y GATE VALVE	✂	—	BUTTERFLY VALVE	↯	—	CHECK VALVE	⋈	—	UNION	▬	—	TEMPERATURE GAGE	Ⓣ	—	PRESSURE GAGE	WF	—	WATER FLOW SWITCH	TS	—	TAMPER SWITCH	⌵-I	—	INSPECTORS TEST CONNECTION	▲	—	FLOW ARROW	X	—	SPRINKLER GUARD	O <sub>E</sub> OR ● <sub>E</sub>	—	EXISTING SPRINKLER TO REMAIN	Ø OR ✖	—	EXISTING SPRINKLER TO BE REMOVED	●	—	NEW PENDENT SPRINKLER, CONCEALED OR EXPOSED AS NOTED.	○	—	NEW UPRIGHT SPRINKLER	◄	—	SIDEWALL SPRINKLER	⊗	—	POINT OF CONNECTION	⊙	—	POINT OF DISCONNECTION	N1	—	HYDRAULIC REFERENCE NODE	S2	—	HYDRAULIC REFERENCE SPRINKLER	▷	FDC	FIRE DEPARTMENT CONNECTION		AFF	ABOVE FINISHED FLOOR		AHC	ABOVE HUNG CEILING		ATC	AT CEILING		BFP	BACKFLOW PREVENTOR		DCDA	DOUBLE CHECK DETECTOR ASSEMBLY		DCV	DOUBLE CHECK VALVE BFP		DN.	DOWN		FCA	FLOOR CONTROL ASSEMBLY		FD	FLOOR DRAIN		FLFD	FUNNEL FLOOR DRAIN		GPM	GALLONS PER MINUTE		JP	JOCKEY PUMP		NFPA	NATIONAL FIRE PROTECTION ASSOCIATION		(NO)	NORMALLY OPEN		(NC)	NORMALLY CLOSED		NTS	NOT TO SCALE		PRV	PRESSURE REDUCING VALVE		PSI	POUNDS PER SQUARE INCH		RPZ	REDUCED PRESSURE ZONE BFP		SF	SQUARE FOOT																NOTE: FOR REFERENCE ONLY. NOT ALL SYMBOLS OR ABBREVIATIONS ARE USED IN THIS PROJECT.	
SYMBOL	ABBREVIATION	DESCRIPTION																																																																																																																																																																											
_____	EX.	EXISTING TO REMAIN																																																																																																																																																																											
_____	NEW	NEW WORK																																																																																																																																																																											
_____	DEM.	EXISTING TO BE REMOVED																																																																																																																																																																											
○_____	—	ELBOW UP																																																																																																																																																																											
└_____	—	ELBOW DOWN																																																																																																																																																																											
—○—	—	TEE DOWN																																																																																																																																																																											
—○—	—	TEE UP																																																																																																																																																																											
┌_____┐	—	PIPE CAP OR FLUSHING CONNECTION																																																																																																																																																																											
⌵	—	GATE VALVE																																																																																																																																																																											
⌵	—	OS&Y GATE VALVE																																																																																																																																																																											
✂	—	BUTTERFLY VALVE																																																																																																																																																																											
↯	—	CHECK VALVE																																																																																																																																																																											
⋈	—	UNION																																																																																																																																																																											
▬	—	TEMPERATURE GAGE																																																																																																																																																																											
Ⓣ	—	PRESSURE GAGE																																																																																																																																																																											
WF	—	WATER FLOW SWITCH																																																																																																																																																																											
TS	—	TAMPER SWITCH																																																																																																																																																																											
⌵-I	—	INSPECTORS TEST CONNECTION																																																																																																																																																																											
▲	—	FLOW ARROW																																																																																																																																																																											
X	—	SPRINKLER GUARD																																																																																																																																																																											
O <sub>E</sub> OR ● <sub>E</sub>	—	EXISTING SPRINKLER TO REMAIN																																																																																																																																																																											
Ø OR ✖	—	EXISTING SPRINKLER TO BE REMOVED																																																																																																																																																																											
●	—	NEW PENDENT SPRINKLER, CONCEALED OR EXPOSED AS NOTED.																																																																																																																																																																											
○	—	NEW UPRIGHT SPRINKLER																																																																																																																																																																											
◄	—	SIDEWALL SPRINKLER																																																																																																																																																																											
⊗	—	POINT OF CONNECTION																																																																																																																																																																											
⊙	—	POINT OF DISCONNECTION																																																																																																																																																																											
N1	—	HYDRAULIC REFERENCE NODE																																																																																																																																																																											
S2	—	HYDRAULIC REFERENCE SPRINKLER																																																																																																																																																																											
▷	FDC	FIRE DEPARTMENT CONNECTION																																																																																																																																																																											
	AFF	ABOVE FINISHED FLOOR																																																																																																																																																																											
	AHC	ABOVE HUNG CEILING																																																																																																																																																																											
	ATC	AT CEILING																																																																																																																																																																											
	BFP	BACKFLOW PREVENTOR																																																																																																																																																																											
	DCDA	DOUBLE CHECK DETECTOR ASSEMBLY																																																																																																																																																																											
	DCV	DOUBLE CHECK VALVE BFP																																																																																																																																																																											
	DN.	DOWN																																																																																																																																																																											
	FCA	FLOOR CONTROL ASSEMBLY																																																																																																																																																																											
	FD	FLOOR DRAIN																																																																																																																																																																											
	FLFD	FUNNEL FLOOR DRAIN																																																																																																																																																																											
	GPM	GALLONS PER MINUTE																																																																																																																																																																											
	JP	JOCKEY PUMP																																																																																																																																																																											
	NFPA	NATIONAL FIRE PROTECTION ASSOCIATION																																																																																																																																																																											
	(NO)	NORMALLY OPEN																																																																																																																																																																											
	(NC)	NORMALLY CLOSED																																																																																																																																																																											
	NTS	NOT TO SCALE																																																																																																																																																																											
	PRV	PRESSURE REDUCING VALVE																																																																																																																																																																											
	PSI	POUNDS PER SQUARE INCH																																																																																																																																																																											
	RPZ	REDUCED PRESSURE ZONE BFP																																																																																																																																																																											
	SF	SQUARE FOOT																																																																																																																																																																											
		GENERAL NOTES																																																																																																																																																																											
				1. THE REVISED SPRINKLER SYSTEM SHALL BE DESIGNED AND INSTALLED BY AN EXPERIENCED FIRE PROTECTION CONTRACTOR IN STRICT ACCORDANCE WITH NFPA-13, THE REQUIREMENTS OF THE LANDLORD, LANDLORD'S FIRE INSURANCE UNDERWRITER, AND ALL GOVERNMENTAL AGENCIES AND AUTHORITIES HAVING JURISDICTION OVER THE PREMESIS. 2. COORDINATE ALL WORK WITH OTHER TRADES TO MINIMIZE INTERFERENCES WITH NEW FACILITIES, TO FACILITATE TIMELY COMPLETION AND AVOID NECESSITY FOR CUTTING AND PATCHING. FURNISH TO OTHER AFFECTED TRADES ALL NECESSARY INFORMATION, WORKING DRAWINGS OR MATERIALS REQUIRED FOR INSTALLATION AND COMPLETION OF ALL WORK. ALL CONFLICTS, OBSTRUCTIONS AND/OR MODIFICATIONS TO THE SPRINKLER DESIGN LAYOUT DUE TO FIELD CONDITIONS SHALL BE BROUGHT TO THE ATTENTION OF THE ENGINEER PRIOR TO FABRICATION AND INSTALLATION. 3. CONTRACTOR SHALL CONDUCT FLOW TEST TO ESTABLISH EXACT FLOW AND PRESSURE AVAILABLE ON THE SITE FOR PREPARATION OF HYDRAULIC CALCULATIONS. 4. ALTER PIPING AS REQUIRED TO SUIT STRUCTURAL MEMBERS, CEILING HEIGHTS, DUCTWORK, AND LIGHTS. PROVIDE AT NO EXTRA COST ALL ADDITIONAL PIPING AND FITTINGS REQUIRED TO OFFSET SYSTEM TO AVOID STRUCTURAL, ARCHITECTURAL, MECHANICAL, AND ELECTRICAL INTERFERENCES, WHETHER INDICATED OR NOT, BEFORE INSTALLING WORK. 5. WHEN INSTALLING SPRINKLER HEADS, THE CONTRACTOR SHALL PROVIDE THE SHORTEST HYDRAULIC PIPE LENGTH BETWEEN THE FINAL SPRINKLER HEAD LOCATION AND THE BRANCH LINE CONNECTION. MINIMUM 1" FOR TWO HEADS, 1-1/4" FOR THREE HEADS, 1-1/2" FOR FIVE HEADS, AND 2" FOR TEN HEADS. 6. PROVIDE TWO 2-1/2 GALLON PRESSURIZED WATER AND ONE 10 LB ABC DRY CHEMICAL EXTINGUISHERS FOR EMERGENCY USE DURING CONSTRUCTION. 7. PROVIDE DRAIN VALVES AT MAIN SHUT-OFF VALVES AND LOW POINTS. 8. PROVIDE ALL PIPE OPENINGS THROUGH PARTITIONS WITH PIPE SLEEVES. FOR PIPES PENETRATING FIRE RATED PARTITIONS, THE SPACE BETWEEN THE PIPE AND THE SLEEVE SHALL BE SEALED WITH A LISTED FIRE STOPPING ASSEMBLY OR MATERIAL. 9. ALL HOSE CONNECTION AND FIRE DEPARTMENT CONNECTION THREADS SHALL BE TESTED TO VERIFY COMPATIBILITY WITH THREADS USED BY LOCAL FIRE DEPARTMENT, IN ACCORDANCE WITH NFPA-14 (2016) SECTION 11.3. 10. THE CONTRACTOR SHALL MAKE A PROVISION FOR (10) EXTRA SPRINKLERS INCLUDING IMMEDIATE BRANCH PIPING, FITTINGS AND ARM-OVERS. THE CONTRACTOR SHALL COORDINATE WITH FINAL CONFIGURATION OF OPEN AND HUNG CEILINGS, ALL HVAC DUCTWORK AND PIPING AND STRUCTURAL ELEMENTS THROUGHOUT THE AREA OF WORK. 11. THE CONTRACTORS SHALL SUBMIT FOR REVIEW AND APPROVAL A COMPOSITE SHOP DRAWING, FULLY COORDINATED WITH ALL OTHER TRADES INDICATING ALL DUCTWORK, MECHANICAL EQUIPMENT, PIPING, ELECTRICAL EQUIPMENT, PLUMBING PIPING AND EQUIPMENT, LIGHTS, CONDUITS, DIFFUSERS, GRILLES AND FIRE ALARM DEVICES.																																																																																																																																																																									
		EQUIPMENT NOTES																																																																																																																																																																											
				1. FLOOR CONTROL VALVE ASSEMBLY: SHALL BE BASED ON VICTAULIC FIRELOCK COMMERCIAL ZONE RISER MODULE SERIES 747M WITH DRAIN CONNECTION AND SIGHT GLASS. PROVIDE 4" VICTAULIC FIRELOCK BUTTERFLY VALVE AND CHECK VALVE OR EQUAL BEFORE RISER MODULE. 2. FIRE DEPARTMENT CONNECTION: SHALL BE BASED ON POTTER ROEMER 5753 OR EQUAL AT BUILDING FACADE. SIAMESE SHALL BE PLACED BETWEEN 18 INCHES AND 36 INCHES ABOVE THE SIDEWALK. FIRE DEPARTMENT CONNECTION SHALL HAVE TWO (2) 3" INTERNALLY THREADED SWIVEL FITTINGS WITH THREADS CONFORMING TO AHJ STANDARDS WITH 4" OUTLET. PROVIDE AUTOMATIC BALL DRIP AT FDC FACE PLATE. 3. SPRINKLERS: REFER TO DRAWINGS FOR SPRINKLER HEAD SCHEDULE.																																																																																																																																																																									
				</																																																																																																																																																																									



KEEP PIPING TIGHT TO STEEL.  
COORDINATE WITH STEEL AND ALL  
OTHER TRADES.

CHECK VALVE WITH AUTOMATIC BALL  
DRIp. DRAIN TO GRASSY AREA IN  
APPROXIMATE LOCATION SHOWN.

FDC IN ACCORDANCE WITH LOCAL FIRE  
DEPARTMENT THREADS. ROUTE 4" TO  
SPRINKLER CONTROL ASSEMBLY. FINAL  
LOCATION TO BE COORDINATED WITH FD.

SIDEWALL SPRINKLER HEAD  
UNDER GARAGE DOOR.  
COORDINATE FINAL LOCATION OF  
SPRINKLER AND PIPING WITH  
GARAGE DOOR. TYPICAL.

HYDRAULICALLY CALCULATED  
AREA - ORDINARY HAZARD  
GROUP 1. 0.15 GPM / 1950 SF

SPRINKLER BRANCH PIPING  
AND UPRIGHT HEADS  
PARALLEL TO ROOF SLOPE.  
TYPICAL FOR EACH BRANCH.

COORDINATE WITH ELECTRICAL  
EQUIPMENT CLEARANCE  
REQUIREMENTS. KEEP PIPING  
3'-0" FROM THE FRONT OF  
ELECTRICAL EQUIPMENT AND  
PROVIDE 12" WIDE DRIP PAN  
WITH 6" HIGH BORDERS UNDER  
LENGTHS OF PIPING WITHIN  
3'-0" REQUIREMENT. TYPICAL.

ELECTRICAL EQUIPMENT ALONG  
THE WALL. COORDINATE  
ACTUALLY LOCATION WITH  
SHOP DRAWINGS. TYPICAL.

4" UNDERGROUND FIRE SERVICE  
FROM MAIN IN WALKER ROAD  
TO 5' OUTSIDE BUILDING BY  
SITE CONTRACTOR. REFER TO  
SITE UTILITIES PLAN FOR  
CONTINUATION.

4" FIRE SERVICE UP THROUGH  
FLOOR WITH HOUSE CONTROL  
VALVE BY PLUMBING  
CONTRACTOR. FIRE PROTECTION  
CONTRACTOR SHALL FURNISH  
AND INSTALL TAMPER SWITCHES.

4" DCDA ON FIRE SERVICE BY  
PLUMBING CONTRACTOR.  
DRAIN THROUGH WALL.

ALL WORK DOWNSTREAM OF BFP  
SHALL BE BY FIRE PROTECTION  
CONTRACTOR. ALL WORK  
UPSTREAM OF BFP SHALL BE  
BY PLUMBING CONTRACTOR

4" SPRINKLER CONTROL  
ASSEMBLY AT 7'-6" AFF.  
ROUTE DRAIN TO EXTERIOR.

4" SPRINKLER MAIN TIGHT TO  
BOTTOM OF STEEL. COORDINATE  
WITH STRUCTURAL MEMBERS.

PENDENT SPRINKLER  
HEAD IN TOILET  
ROOM CEILING.

COORDINATE WITH ELECTRICAL  
EQUIPMENT CLEARANCE REQUIREMENTS.  
KEEP PIPING 3'-0" FROM THE FRONT OF  
ELECTRICAL EQUIPMENT AND PROVIDE  
12" WIDE DRIP PAN WITH 6" HIGH  
BORDERS UNDER LENGTHS OF PIPING  
WITHIN 3'-0" REQUIREMENT. TYPICAL.



## 2 FIRE PROTECTION NEW WORK PLAN

SCALE: 1/8" = 1'-0"

- NOTES:
1. FINAL SPRINKLER LAYOUT TO BE COORDINATED WITH ALL STRUCTURAL MEMBERS.
  2. PROVIDE PROTECTIVE CAGES FOR ALL UPRIGHT SPRINKLER HEADS.
  3. PAINT ALL SPRINKLER PIPING VALVES AND FITTINGS RED AND LABEL AS PER SPECIFICATIONS.

4" SPRINKLER PIPING TO  
SPRINKLER SYSTEM.  
REFER TO FLOOR PLAN

4" FROM FDC.

4" FLOW ASSEMBLY WITH TAMPER SWITCH, WATER FLOW  
SWITCH & DRAIN ROUTED TO OUTSIDE. RE: FP-701.

FIRE PROTECTION CONTRACTOR SHALL PROVIDE TAMPER  
SWITCH ON ALL OS&Y VALVES ON FIRE SERVICE

4" FIRE SERVICE DCDA BY  
PLUMBING CONTRACTOR

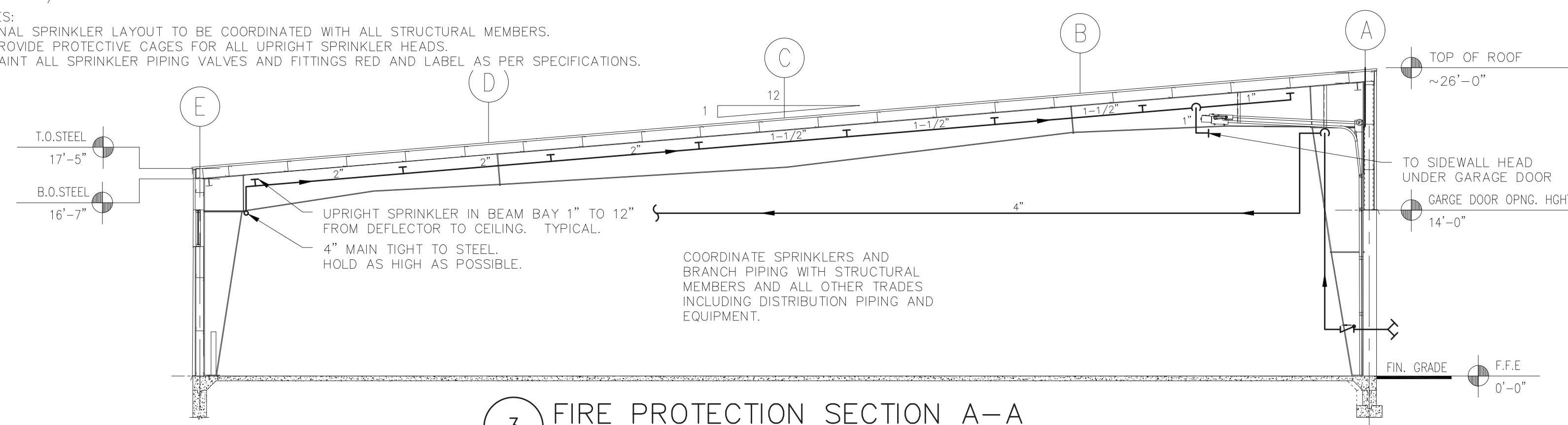
4" FIRE SERVICE HOUSE CONTROL  
VALVE WITH TAMPER SWITCH  
ROUTE DRAIN TO EXTERIOR TERMINATE  
18" ABOVE FINISHED GRADE. GRADE

4" UNDERGROUND FIRE SERVICE FROM MAIN IN  
WALKER ROAD TO 5' OUTSIDE BUILDING BY SITE  
CONTRACTOR. REFER TO SITE UTILITIES PLAN

ALL WORK DOWNSTREAM  
SHALL BE BY THE FIRE  
PROTECTION CONTRACTOR.

## 1 FIRE PROTECTION RISER DIAGRAM

SCALE: NONE

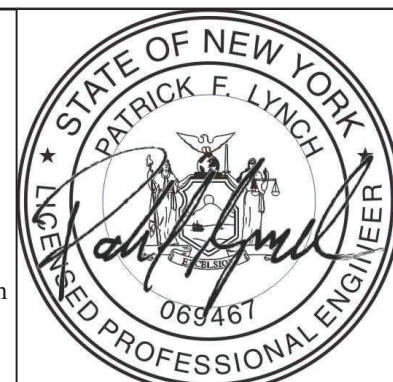


## 3 FIRE PROTECTION SECTION A-A

SCALE: 1/8" = 1'-0"

**DCAK · MSA**  
ARCHITECTURE AND ENGINEERING  
53 HUDSON AVENUE  
NYACK, NEW YORK 10960  
www.DCAK-MSA.com  
Email: info@DCAK-MSA.com  
Tel 845-353-1300 Fax 845-353-1614

RCM Technologies USA, Inc.  
Consulting Engineers  
99 Bauer Drive  
Suite 101  
Oakland, NJ 07436  
TEL:(201) 249-8700  
EMAIL:bruce.goldman@rcmt.com



OLA Consulting Engineers  
50 Broadway, Hawthorne,  
New York 10532  
914.747.2800  
8 West, 38th Street, New  
York, NY 10018  
646.849.4110  
olace.com  
OLA P/N: NDCA0012

REVISION NUMBER	DATE	MADE BY	APP'D BY	REVISION

RECORD DRAWING CERTIFICATION			
<input type="checkbox"/> AS BUILT - CHANGES AS NOTED		<input type="checkbox"/> AS BUILT - NO CHANGES	
CONTRACTOR		PROJECT COORDINATOR	
NAME	NAME	SIGNATURE	SIGNATURE
SIGNATURE	SIGNATURE	TITLE	TITLE
TITLE	TITLE	DATE	DATE

WESTCHESTER COUNTY, NEW YORK	
DEPARTMENT OF PUBLIC WORKS AND TRANSPORTATION	
DIVISION OF ENGINEERING	
NEW EQUIPMENT STORAGE BUILDING	
RICHARD A. FLYNN, SR. FIRE TRAINING CENTER	
VALHALLA CAMPUS, VALHALLA, NEW YORK	
FIRE PROTECTION NEW WORK PLAN	

CONTRACT NUMBER	SHEET NUMBER
17-521	FP-201
SHEET NO. 31 OF 53	
SCALE: AS SHOWN	
DATE: 11/16/2021	
DPW FILE NO.	
38-47-FP-713-0	REV. NO. 0



A detailed line drawing of a Visteala Firelock fire extinguisher assembly. The assembly includes a main body with a handle (12) and a trigger gun (13) connected by a hose (15). The main body features a pressure gauge (14) and a label with the Visteala Firelock logo and flow direction arrows. The trigger gun has a safety pin (16) and a release button (17). The main body has a mounting bracket (18) and a connector (19).

8 SPRINKLER ZONE CONTROL RISER MODULE WITH CHECK VALVE & PSI RELIEF  
SCALE: NONE

- 
- Diagram illustrating the air flow and temperature zones around a unit heater. The heater is represented by a rectangle labeled "UNIT HEATER". Airflow is indicated by a downward arrow labeled "AIRFLOW". The diagram is divided into two main temperature zones: "HIGH - TEMPERATURE ZONE" (top) and "INTERMEDIATE - TEMPERATURE ZONE" (bottom). Key dimensions and labels include:
- Horizontal distance from the heater to the left boundary: 7'-0"
  - Vertical distance from the heater to the top of the intermediate zone: 10'-0"
  - Vertical distance from the top of the intermediate zone to the bottom of the intermediate zone: 20'-0"
  - Vertical distance from the bottom of the intermediate zone to the bottom of the diagram: 5'-0"
  - Horizontal distance from the heater to the right boundary at the bottom of the intermediate zone: 8'-7 7/8"
  - Horizontal distance from the heater to the right boundary at the top of the intermediate zone: 3'-9 5/8"
  - Labels A, B, and C are placed near the right boundary.
  - Additional dimensions: 11'-6 1/16" (bottom right), B=0.5774, C=1.1547 (top right).

Diagram illustrating the required clearance for a wall-mounted sprinkler head:

- Distance from wall to sprinkler head: 6'-0" MIN to 15'-0" MAX.
- Clearance from sprinkler head to ceiling: 6" MIN to 7'-6" MAX.

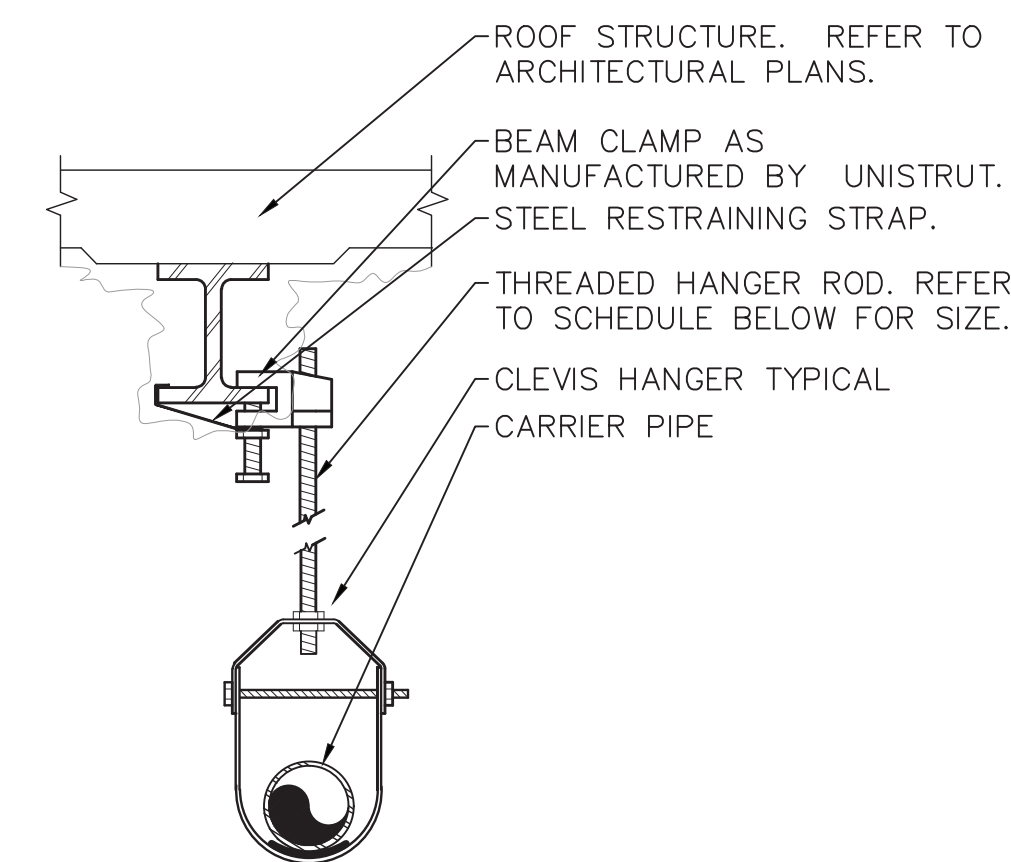
### 3 SPRINKLER HEAD SPACING CRITERIA

## 2 PIPE WALL SLEEVE DETAIL

**NOTES:**

1. SPRINKLER HEADS SHALL BE INSTALLED AS PER MANUFACTURER'S RECOMMENDATIONS
2. PROVIDE UPRIGHT SPRINKLER HEADS WITH PROTECTIVE CAGES FOR ALL SPRINKLER HEADS.
3. ALL SPRINKLER HEADS THROUGHOUT THE PROJECT AREA SHALL BE OF THE ORDINARY TEMPERATURE RATING EXCEPT AS FOLLOWS:
  - A. SPRINKLER HEADS LOCATED CLOSE TO HEATERS, SHALL BE OF THE TEMPERATURE RATING AS REQUIRED BY NFPA-13.
  - B. ALL HEAT GENERATING EQUIPMENT WHICH CAN AFFECT THE TEMPERATURE RATING OF THE SPRINKLER HEADS SHALL BE CLEARLY IDENTIFIED ON THE SHOP DRAWINGS PRIOR TO SUBMISSION FOR APPROVAL.

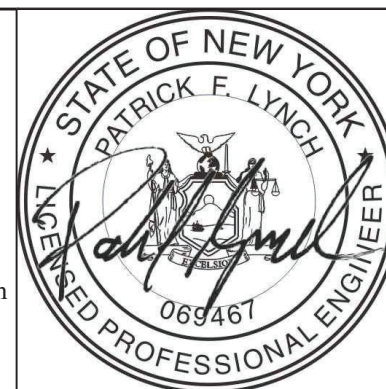
6 TYPICAL UPRIGHT SPRINKLER  
SCALE: NONE



NOTES:

- 1.) CLEVIS HANGERS WITH WELDED INSULATION SHIELDS SIMILAR TO RAUCH FIG. 100SH ON ALL PIPES LARGER THAN 1".
- 2.) FOR PIPES 1" OR SMALLER, A BAND HANGER WITH INSULATION SHIELD MAY BE USED SIMILAR TO RAUCH FIG. NO. 1ASH.
- 3.) FOR NON-INSULATED PIPE, INSULATION SHIELDS MAY BE OMITTED.
- 4.) ALL PIPE HANGERS SHALL BE GALVANIZED STEEL OR FACTORY PAINTED BLACK WITH ENAMEL.
- 5.) FOR NON FERROUS PIPING WITHOUT INSULATION, ALL HANGERS SHALL BE COPPER PLATED OR FURNISHED WITH A DI-ELECTRIC BETWEEN PIPE AND HANGERS.
- 6.) WHERE EXISTING BUILDING STRUCTURAL COMPONENTS HAVE FIREPROOF MATERIAL, ANY AREA THAT IS DISTURBED OR DAMAGED AS A RESULT OF HANGER INSTALLATION SHALL BE PATCHED WITH UL AND FM APPROVED FIREPROOFING TO MATCH EXISTING.

1 PIPE HANGER DETAIL  
SCALE: NONE



**OLA**  
CONSULTING  
ENGINEERS

OLA Consulting Engineers  
50 Broadway, Hawthorne,  
New York 10532  
914.747.2800  
8 West 38th Street, New  
York, NY 10018  
646.849.4110  
olace.com  
OLA P/N: NDCA0012

REVISION NUMBER	DATE	MADE BY	APP'D BY	REVISION

<b>RECORD DRAWING CERTIFICATION</b>	
<input type="checkbox"/>	AS BUILT – CHANGES AS NOTED
<input type="checkbox"/>	AS BUILT – NO CHANGES
<div style="display: flex; justify-content: space-between;"> <div style="width: 45%;"> <p style="text-align: center; margin-top: 0;">CONTRACTOR</p> <p>NAME _____</p> <p>SIGNATURE _____</p> <p>TITLE _____ DATE _____</p> </div> <div style="width: 45%;"> <p style="text-align: center; margin-top: 0;">PROJECT COORDINATOR</p> <p>NAME _____</p> <p>SIGNATURE _____</p> <p>TITLE _____ DATE _____</p> </div> </div>	

WESTCHESTER COUNTY, NEW YORK  
DEPARTMENT OF PUBLIC WORKS AND TRANSPORTATION  
DIVISION OF ENGINEERING

NEW EQUIPMENT STORAGE BUILDING  
RICHARD A. FLYNN, SR. FIRE TRAINING CENTER  
VALHALLA CAMPUS, VALHALLA, NEW YORK  
FIRE PROTECTION DETAILS

CONTRACT NUMBER 17-521	SHEET NUMBER FP-701
SHEET NO. 32 OF 53	
SCALE: AS SHOWN DATE: 11/16/2021	
DPW FILE NO. 38-47-FP-714-0	REV. NO. 0