

PLUMBING SCHEDULE								
TAG	SYMBOLS		FIXTURES	PLUMBING CONNECTIONS				DESCRIPTION
	PLAN	ELEVATION		WASTE	VENT	COLD WATER	HOT WATER	
P-1			LAVATORY	2"	1 1/2"	3/4"	3/4"	KOHLER SOHO WALL-MOUNTED BATHROOM LAVATORY K-2084-L. FAUCET: ZURN Z6950-XL-S AND SHALL BE HARDWIRED. SOAP DISPENSER: Z6950-SD. REFER TO SPECIFICATIONS FOR ALL REQUIRED OPTIONS.
P-2			WATER CLOSET	4"	2"	1 1/4"	-	AMERICAN STANDARD MADERA FLOWISE TOILET MODEL 3043.001 WITH SELECTRONIC FLUSH VALVE MODEL 606B.121, 1.28 GPF. PROVIDE HARD WIRE AC TRANSFORMER. REFER TO SPECIFICATIONS FOR ALL REQUIRED OPTIONS.
NFWH			NON-FREEZE WALL HYDRANT	-	-	3/4"	-	SMITH #56090T - CAST BRASS, THREADED, NON-FREEZE, HEAVY-DUTY HYDRANT WITH NIKALOY BOX AND LOCKING COVER, BRASS OPERATING PARTS, 3/4" HPT HOSE OUTLET, 3/4" IPS OUTSIDE, ELBOW ADAPTER, "T" HANDLE KEY, AND INTEGRAL VACUUM BREAKER. PIPING SERVING NFWH TO BE ROUTED DOWN ON INTERIOR SIDE OF OUTER WALL INSULATION.
HB			HOSE BIB	-	-	3/4"	-	IN FINISHED AREAS, WASHDOWN FAUCET SHALL BE POLISHED CHROME-PLATED WALL FAUCET WITH WALL FLANGE, 1/2" INLET, 3/8" HOSE THREAD OUTLET AND REMOVABLE LOOSE KEY T-HANDLE. CHICAGO #293-6 WITH #E27 VACUUM BREAKER OR ACCEPTABLE EQUIVALENT.
TD			TRENCH DRAIN	-	-	-	-	ZURN ZFV812-U4-BC-DB DRAIN #2002 - 12" WIDE REVEAL FIBER REINFORCED VINYLESTER CONTINUOUS 10'-0" TRENCH DRAIN SYSTEM, CLASS D (H-20) GALVANIZED DUCTILE IRON BAR GRATE, 4" NO-HUB OUTLET, AND DOME STRAINER. COORDINATE OUTLET LOCATION IN FIELD.
CODP			CLEANOUT DECKPLATE	-	-	-	-	FLOOR CLEANOUT WITH ADJUSTABLE HEAD, ANCHOR FLANGE, CUT-OFF SECTIONS AND ROUND TOP. ZURN #Z1400 OR APPROVED EQUAL. PROVIDE EXTRA HEAVY DUTY NON-TILT CAST IRON TOP.
TG-1	-	-	TRAP GUARD	-	-	-	-	GREEN DRAIN™ INLINE FLOOR DRAIN TRAP SEAL WITH UV RESISTANT ABS PLASTIC FRAME, SILICONE RUBBER SEALING FLAPPER, AND FOUR FLEXIBLE SEALING RIBS. TESTED AND CERTIFIED TO THE ASSE 1072 STANDARD AND LISTED WITH IAPMO AND ICC. (PROVIDE AT ALL FLOOR DRAINS)

NOTES:
1.) REFER TO SPECIFICATIONS FOR MOUNTING HEIGHTS.
2.) REFER TO ARCHITECTURAL FLOOR PLANS FOR EXACT LOCATION.

ADD / ALTERNATE NOTES

1. **COMPRESSOR** - PROVIDE ADD / ALTERNATE PRICE TO FURNISH AND INSTALL THE FOLLOWING AIR COMPRESSOR. COMPRESSOR SHALL BE INGERSOLL RAND MODEL# UP6-15CTAS-150 120 GAL TANK WITH 15 HP MOTOR 480V/3PH/60HZ. UNIT SHALL INCLUDE INTERNAL COOLING SYSTEM, COMPRESSED AIR FILTRATION, AIR DRYER, AND UNIT MOUNTED CONTROL PANEL. PROVIDE OPTIONAL SERVICE MAINTENANCE INDICATOR WHICH INCLUDES HOUR METER, MAINTENANCE METER, INDICATOR OF FAULT CONDITION, REAL TIME CLOCK, BACK LIGHT, SERVICE DUE WARNING, SERVICE OVERDUE.

ALL COMPRESSED AIR PIPING SHALL BE PART OF THE BASE BID.

SYMBOL & ABBREVIATIONS

SYMBOL	ABBREVIATION	DESCRIPTION
	NEW	NEW WORK
	CW	COLD WATER
	HW	HOT WATER
	V	VENT
	W	WASTE LINE
	S	SOIL LINE
	G	GAS LINES
	CA	COMPRESSED AIR LINES
	-	PLUG VALVE
	-	CHECK VALVE
	-	BALL VALVE
	-	MANUAL AIR VENT
	-	PRESSURE REDUCING VALVE
	-	TEE DOWN
	-	ELBOW DOWN
	-	TEE UP
	-	ELBOW UP
	-	PIPE CAP
	CODP	CLEAN OUT DECK PLATE
	WCO	WALL CLEAN OUT
	-	CONCENTRIC REDUCER
	-	ECCENTRIC REDUCER
	-	STRAINER
	-	FLEXIBLE CONNECTION
	-	FLOW ARROW
	-	PRESSURE GAGE
	-	THERMOMETER
	-	HOSE BIB
	-	UNION
	-	WALL HYDRANT
	AFF	ABOVE FINISHED FLOOR
	AHC	ABOVE HUNG CEILING
	BFP	BACK FLOW PREVENTOR
	VTR	VENT THROUGH ROOF
	FAI	FRESH AIR INTAKE
	RPZ	REDUCED PRESSURE ZONE - BFP
	DCV	DOUBLE CHECK VALVE - BFP
	TYP	TYPICAL
	EWB	ELECTRIC WATER HEATER

GENERAL NOTES

- THE CONTRACT DRAWINGS INDICATE THE EXTENT AND GENERAL ARRANGEMENTS OF THE PLUMBING SYSTEMS. IF ANY DEPARTURES FROM THE DRAWINGS ARE DEEMED NECESSARY BY THE PLUMBING CONTRACTOR, DETAILS OF SUCH DEPARTURES AND THE REASONS THEREFOR SHALL BE SUBMITTED TO THE OWNER AND ENGINEER FOR APPROVAL. NO SUCH DEPARTURES SHALL BE MADE WITHOUT PRIOR WRITTEN APPROVAL OF THE OWNER AND ENGINEER. EQUIPMENT AND PIPING ARRANGEMENTS SHALL PROVIDE ADEQUATE AND ACCEPTABLE CLEARANCES FOR ENTRY, SERVICING, AND MAINTENANCE. ANY CHANGES TO PIPING AND EQUIPMENT LOCATIONS NECESSARY TO AVOID INTERFERENCE WITH OTHER TRADES SHALL BE MADE AT NO EXTRA COST.
- THE PLUMBING WORK SHALL BE PERFORMED IN STRICT ACCORDANCE WITH THE LATEST EDITION OF THE PREVAILING NEW YORK STATE PLUMBING AND BUILDING CODES, AND ALL LOCAL REGULATIONS THAT MAY APPLY. IN CASE OF CONFLICT BETWEEN THE CONTRACT DOCUMENTS AND A GOVERNING CODE OR ORDINANCE, THE MORE STRINGENT STANDARD SHALL APPLY.
- THE PLUMBING CONTRACTOR SHALL BE RESPONSIBLE FOR OBTAINING ALL NECESSARY PERMITS AND FOR PAYING RELATED FEES.
- PRIOR TO FABRICATION, THIS CONTRACTOR SHALL VERIFY ALL MEASUREMENTS AND CONDITIONS ON JOB SITE, AND COORDINATE THIS WORK WITH THE WORK OF ALL OTHER TRADES.
- PROVIDE ALL PLUMBING FIXTURES, PIPING, VALVES AND ACCESSORY ITEMS AS SPECIFIED AND AS REQUIRED FOR A COMPLETE INSTALLATION. ROUGHING DIMENSIONS OF FIXTURES MUST BE COORDINATED WITH THE GENERAL CONTRACTOR.
- PITCH ALL WASTE, SANITARY, AND STORM DRAIN PIPING AT MAXIMUM SLOPE POSSIBLE, BUT NOT LESS THAN 1/8" PER FOOT.
- NO PIPING SHALL RUN EXPOSED IN TOILET ROOM.
- PROVIDE DIELECTRIC FITTINGS OR COUPLINGS FOR DISSIMILAR METALS.
- PROVIDE SHUTOFF VALVES AT ALL FIXTURES AND EQUIPMENT ON COLD WATER, HOT WATER, AND GAS SUPPLY PIPES.
- ALL WORK SHALL BE PROPERLY TESTED, BALANCED, AND CLEANED AND DISINFECTED. PROVIDE A ONE YEAR WARRANTY FROM DATE OF FINAL INSPECTION ON ALL PARTS AND LABOR.
- PROVIDE ALL PIPE OPENINGS THROUGH PARTITIONS WITH PIPE SLEEVES. FOR PIPES PENETRATING FIRE RATED PARTITIONS, THE SPACE BETWEEN THE PIPE AND THE SLEEVE SHALL BE SEALED WITH FIRE STOPPING MATERIAL. PENETRATIONS FOR PIPING SHALL BE MADE BY CORE DRILLING WHENEVER POSSIBLE. SLEEVE FOR SERVICE PIPE SHALL BE TWO (2) TIMES THE DIAMETER OF THE SERVICE PIPE.
- THE PLUMBING CONTRACTOR SHALL PROVIDE ALL CUTTING, PATCHING, CORE DRILLING, PAINTING, ACCESS PANELS, AND FINAL RESTORATION REQUIRED TO FACILITATE THE INSTALLATION OF PLUMBING PIPING, INCLUDING ABOVE CEILINGS AND IN SHAFTS THAT WILL NOT BE REPLACED OR OPENED UNDER ANY OTHER SCOPE OF WORK RELATED TO THIS PROJECT. CONTRACTOR TO REMOVE AND REPLACE CEILINGS, AND OPEN AND PATCH SHAFTS AND WALLS, AS REQUIRED TO EXECUTE THE PLUMBING WORK.
- ALL MOTOR STARTERS AND DISCONNECT SWITCHES FOR PLUMBING EQUIPMENT SHALL BE FURNISHED BY THE PLUMBING CONTRACTOR AND INSTALLED BY THE ELECTRICAL CONTRACTOR, UNLESS OTHERWISE NOTED. DISCONNECT SWITCHES FURNISHED BY THE PLUMBING CONTRACTOR FOR PLUMBING EQUIPMENT SHALL BE HEAVY DUTY TYPE.
- THIS CONTRACTOR IS RESPONSIBLE FOR ALL PLUMBING FIXTURES AND DISTRIBUTION SYSTEMS, INCLUDING ALL ROUGH-INS AND FINAL CONNECTIONS.
- THE CONTRACTOR SHALL BE RESPONSIBLE FOR PROVIDING TEMPORARY VENTILATION AND EXHAUST AIR WHEN WELDING OR SOLDERING OPERATIONS ARE PERFORMED, AS REQUIRED BY OSHA.
- PROVIDE PVC PROTECTIVE COVER FOR ALL PIPING INSULATION BELOW 10'-0" AFF.
- THE CONTRACTORS SHALL SUBMIT FOR REVIEW AND APPROVAL A COMPOSITE SHOP DRAWING, FULLY COORDINATED WITH ALL OTHER TRADES INDICATING ALL DUCTWORK, MECHANICAL EQUIPMENT, PIPING, ELECTRICAL EQUIPMENT, PLUMBING PIPING AND EQUIPMENT, LIGHTS, CONDUITS, DIFFUSERS, GRILLES AND FIRE ALARM DEVICES.

EQUIPMENT NOTES

- PROTECTIVE SHIELDING GUARDS:** WHEREVER PIPING IS EXPOSED BELOW SINKS AND LAVATORIES, PROVIDE MANUFACTURED PLASTIC ENCLOSURES BY TRUEBRO FOR COVERING PLUMBING FIXTURE HOT AND COLD WATER SUPPLIES AND TRAP AND DRAIN PIPING. COMPLY WITH AMERICANS WITH DISABILITIES ACT (ADA) REQUIREMENTS.
- WATER HAMMER ARRESTORS:** ZURN INDUSTRIES SHOKTROL SERIES. STAINLESS STEEL CONSTRUCTION, BELLOWS TYPE SIZED IN ACCORDANCE WITH PDI WH-201, PRE-CHARGED SUITABLE FOR OPERATION IN TEMPERATURE RANGE 34 TO 250 DEGREES F AND MAXIMUM 150 PSI WORKING PRESSURE.
- POINT OF USE ELECTRIC TANKLESS HOT WATER HEATER (EWH-1):** SHALL BE EEMAX "SINGLE POINT" MODEL SP-3512, 120V/1Ø/60HZ, 3.5kW, 29 AMPS, U.L. LISTED, TO HEAT 0.5 GPM @ A TEMPERATURE RISE OF 48F. UNIT SHALL HAVE ABS-UL RATED COVER. ELEMENT SHALL BE REPLACEABLE CARTRIDGE INSERT. UNIT SHALL HAVE A REPLACEABLE FILTER IN THE INLET CONNECTOR AND A FLOW REGULATOR IN THE OUTLET CONNECTOR. ELEMENT SHALL BE IRON FREE, NICKEL CHROME MATERIAL. HEATER SHALL BE FITTED WITH 3/8" COMPRESSION NUTS AND SLEEVES. HEATER SHALL BE INSTALLED WITH WATER CONNECTIONS ON TOP ONLY. DISCONNECT SWITCH SHALL BE FURNISHED BY THE PLUMBING CONTRACTOR AND INSTALLED BY THE ELECTRICAL CONTRACTOR.
- OIL-WATER SEPARATOR:** BASED ON HIGHLAND TANK MODEL HTC-2000 SERIES-G DOUBLE WALL OIL/WATER SEPARATOR WITH INTEGRAL SAND INTERCEPTOR COMPARTMENT, CORELLA COALESCER PLATE SYSTEM AND HIGH GUARD PROTECTION SYSTEM. UNIT SHALL HAVE A TOTAL VOLUME OF 2000 GAL AND A MAXIMUM FLOW RATE OF 200 GAL/MIN. A HIGHLAND TANK ALARM PANEL SHALL BE PROVIDED IN THE BUILDING CAPABLE OF HIGH OIL (VISUAL ALARM), HIGH-HIGH OIL (AUDIBLE AND VISUAL ALARM), AND LEAK DETECTION (AUDIBLE AND VISUAL ALARM). UNIT REQUIRES A 120V/1PH/60HZ POWER CONNECTION WITH ~1 AMP. REFER TO DETAIL ON P-701 INSTALLATION AND SPECIFICATIONS FOR FULL INFORMATION.

DCAK - MSA
ARCHITECTURE AND ENGINEERING
53 HUDSON AVENUE
NYACK, NEW YORK 10960
www.DCAK-MSA.com
Email: info@DCAK-MSA.com
Tel 845-353-1300 Fax 845-353-1614

RCM Technologies USA, Inc.
Consulting Engineers
99 Bauer Drive
Suite 101
Oakland, NJ 07436
TEL:(201) 249-8700
EMAIL:bruce.goldman@rcmt.com



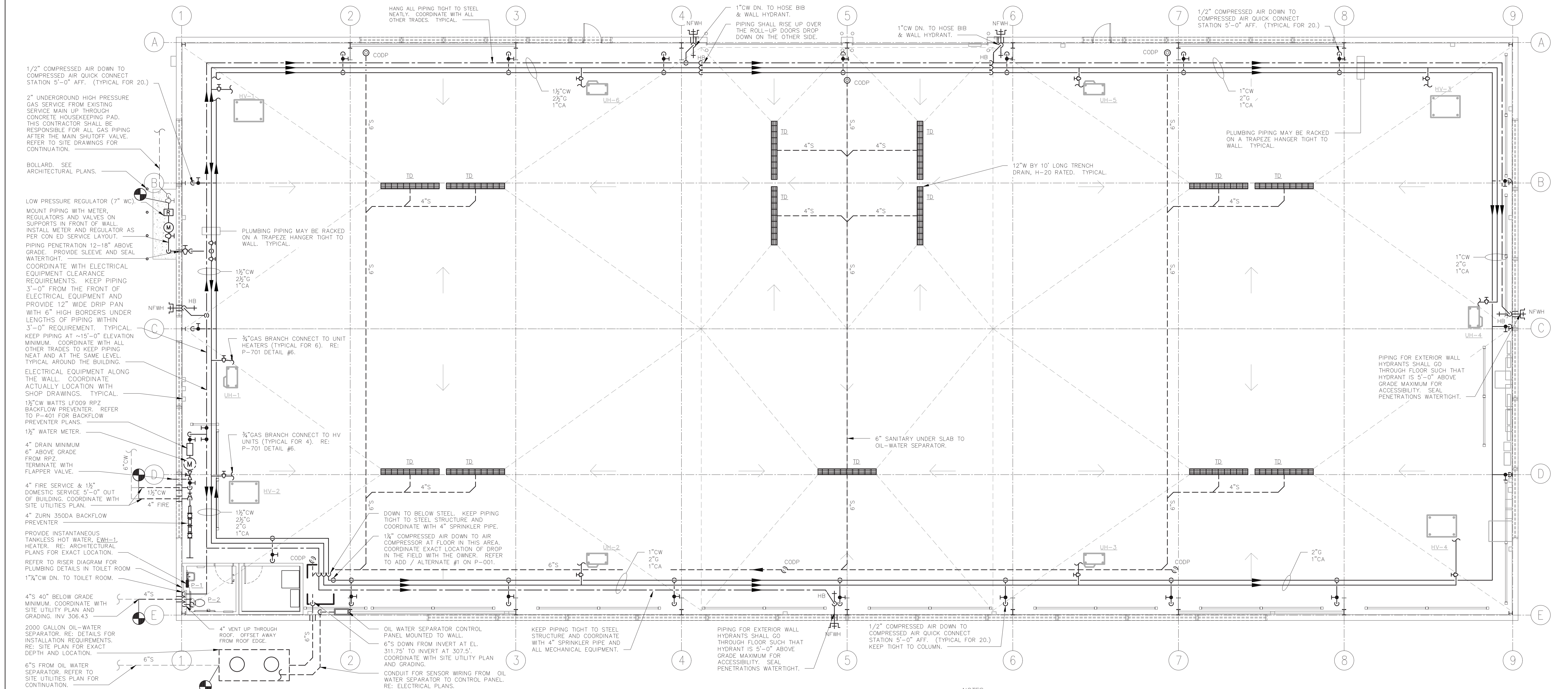
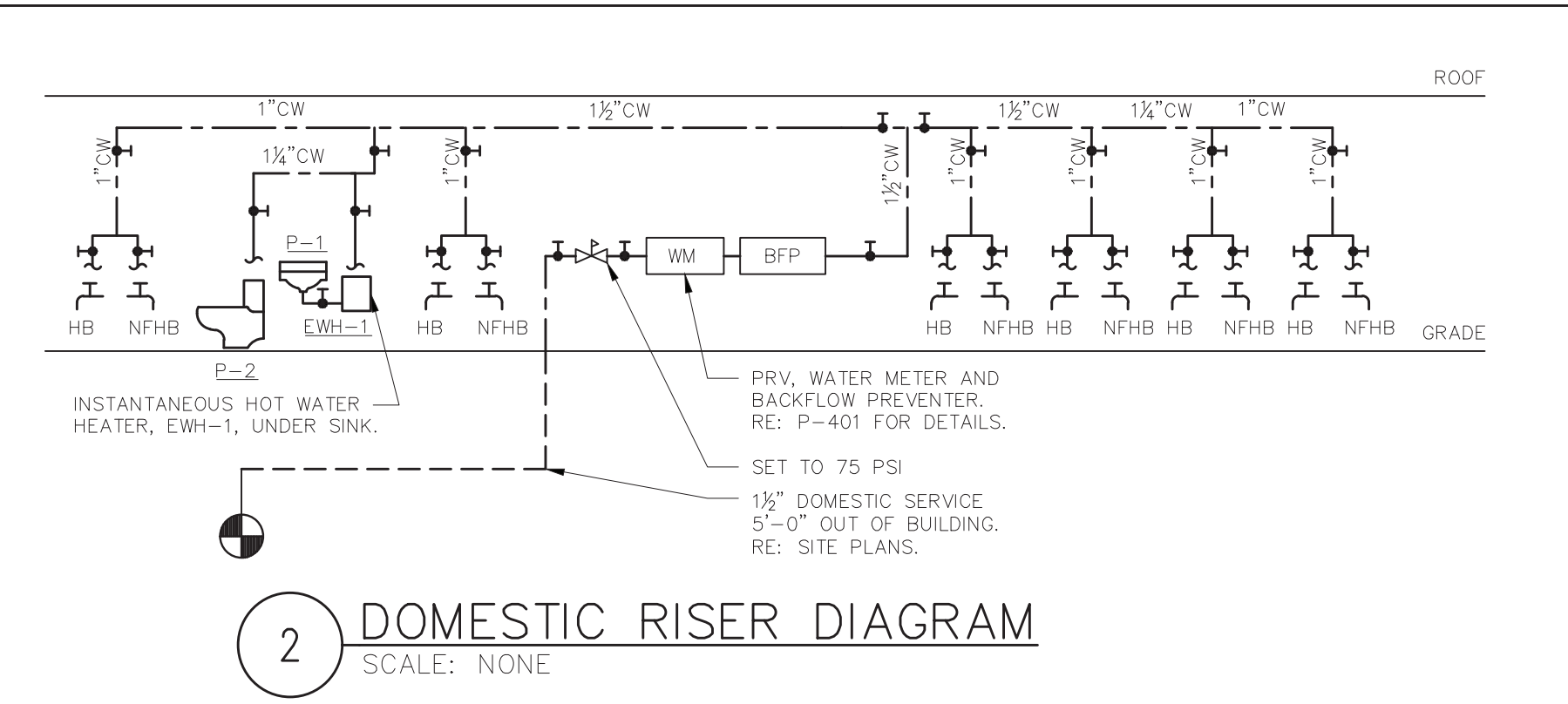
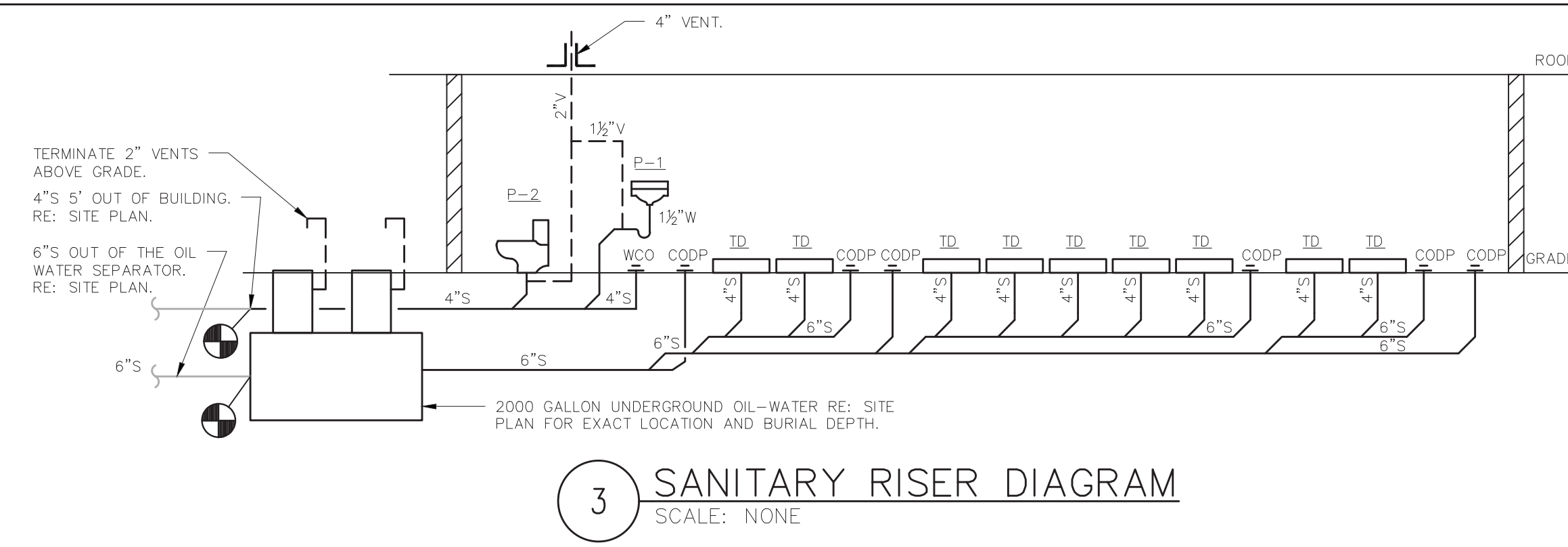
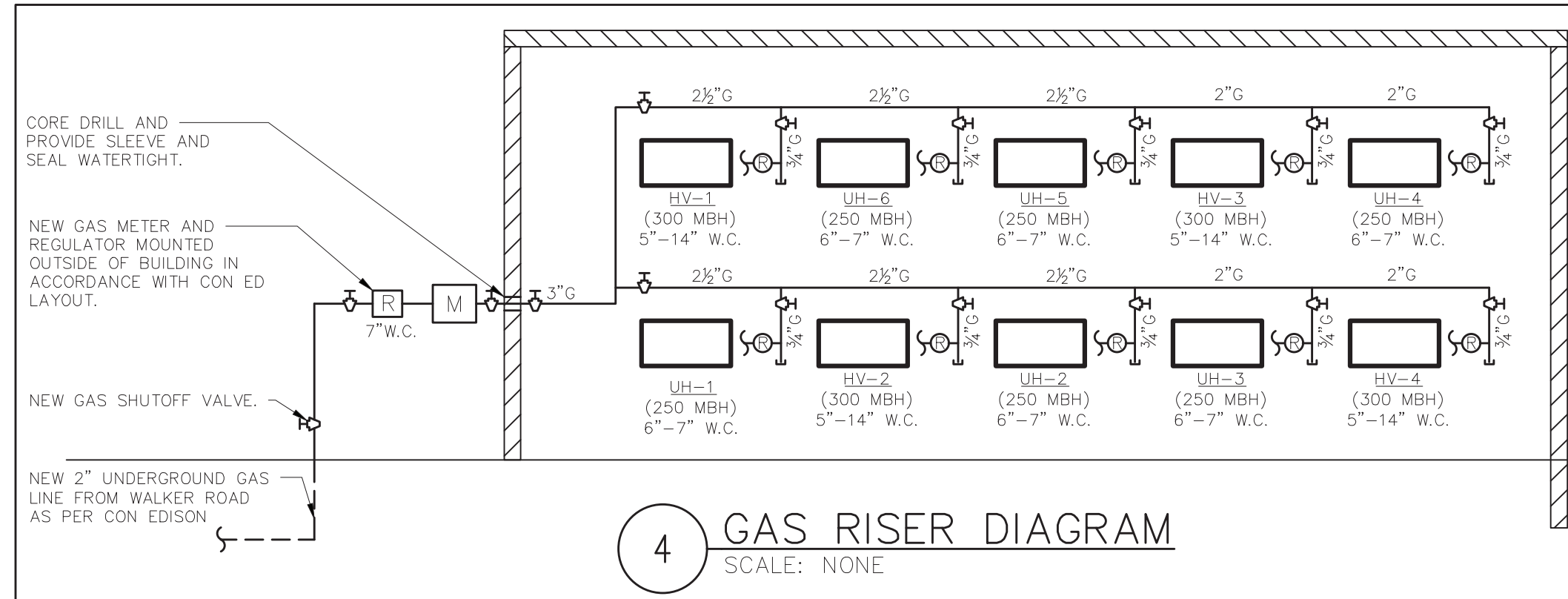
Ola Consulting Engineers
50 Broadway, Hawthorne,
New York 10532
914.747.2800
8 West 38th Street, New
York, NY 10018
646.849.4110
olace.com
OLA P/N: NDCA0012

REVISION NUMBER	DATE	MADE BY	APP'D BY

RECORD DRAWING CERTIFICATION			
<input type="checkbox"/>	AS BUILT - CHANGES AS NOTED	<input type="checkbox"/>	AS BUILT - NO CHANGES
CONTRACTOR		PROJECT COORDINATOR	
NAME _____	NAME _____	NAME _____	NAME _____
SIGNATURE _____	SIGNATURE _____	SIGNATURE _____	SIGNATURE _____
TITLE _____	TITLE _____	TITLE _____	TITLE _____

WESTCHESTER COUNTY, NEW YORK
DEPARTMENT OF PUBLIC WORKS AND TRANSPORTATION
DIVISION OF ENGINEERING
NEW EQUIPMENT STORAGE BUILDING
RICHARD A. FLYNN, SR. FIRE TRAINING CENTER
VALHALLA CAMPUS, VALHALLA, NEW YORK
PLUMBING SYMBOLS, ABBREVIATIONS, & GENERAL NOTES

CONTRACT NUMBER 17-521	SHEET NUMBER P-001
SHEET NO. 33 OF 53	
SCALE: AS SHOWN DATE: 11/16/2021	REV. NO. 0
DPW FILE NO. 38-47-P-715-0	



1/2" COMPRESSED AIR DOWN TO COMPRESSED AIR QUICK CONNECT STATION 5'-0" AFF. (TYPICAL FOR 20.)

2" UNDERGROUND HIGH PRESSURE GAS SERVICE FROM EXISTING SERVICE MAIN UP THROUGH CONCRETE HOUSEKEEPING PAD. THIS CONTRACTOR SHALL BE RESPONSIBLE FOR ALL GAS PIPING AFTER THE MAIN SHUTOFF VALVE. REFER TO SITE DRAWINGS FOR CONTINUATION.

BOLLARD, SEE ARCHITECTURAL PLANS.

LOW PRESSURE REGULATOR (7" WC) MOUNT PIPING WITH METER, REGULATORS AND VALVES ON SUPPORTS IN FRONT OF WALL. INSTALL METER AND REGULATOR AS PER CON ED SERVICE LAYOUT. PIPING PENETRATION 12-18" ABOVE GRADE. PROVIDE SLEEVE AND SEAL WATER TIGHT. COORDINATE WITH ELECTRICAL EQUIPMENT CLEARANCE REQUIREMENTS. KEEP PIPING 3'-0" FROM THE FRONT OF ELECTRICAL EQUIPMENT AND PROVIDE 12" WIDE DRIP PAN WITH 6" HIGH BORDERS UNDER LENGTHS OF PIPING WITHIN 3'-0" REQUIREMENT. TYPICAL. KEEP PIPING AT ~15'-0" ELEVATION MINIMUM. COORDINATE WITH ALL OTHER TRADES TO KEEP PIPING NEAT AND AT THE SAME LEVEL. TYPICAL AROUND THE BUILDING.

ELECTRICAL EQUIPMENT ALONG THE WALL. COORDINATE ACTUALLY LOCATION WITH SHOP DRAWINGS. TYPICAL.

1 1/2" CW WATTS LF009 RPZ BACKFLOW PREVENTER. REFER TO P-401 FOR BACKFLOW PREVENTER PLANS.

1 1/2" WATER METER.

4" DRAIN MINIMUM 6" ABOVE GRADE FROM RPZ. TERMINATE WITH FLAPPER VALVE.

4" FIRE SERVICE & 1 1/2" DOMESTIC SERVICE 5'-0" OUT OF BUILDING. COORDINATE WITH SITE UTILITIES PLAN.

4" ZURN 350DA BACKFLOW PREVENTER

PROVIDE INSTANTANEOUS TANKLESS HOT WATER, EWH-1, HEATER. RE: ARCHITECTURAL PLANS FOR EXACT LOCATION.

REFER TO RISER DIAGRAM FOR PLUMBING DETAILS IN TOILET ROOM

1 1/2" CW DN. TO TOILET ROOM.

4" S 40" BELOW GRADE MINIMUM. COORDINATE WITH SITE UTILITIES PLAN AND GRADING. INV 306.43

2000 GALLON OIL-WATER SEPARATOR. RE: DETAILS FOR INSTALLATION REQUIREMENTS. RE: SITE PLAN FOR EXACT DEPTH AND LOCATION.

6" S FROM OIL WATER SEPARATOR. REFER TO SITE UTILITIES PLAN FOR CONTINUATION.

HANG ALL PIPING TIGHT TO STEEL NEATLY. COORDINATE WITH ALL OTHER TRADES. TYPICAL.

1 1/2" CW DN. TO HOSE BIB & WALL HYDRANT.

PIPING SHALL RISE UP OVER THE ROLL-UP DOORS DROP DOWN ON THE OTHER SIDE.

1 1/2" COMPRESSED AIR DOWN TO COMPRESSED AIR QUICK CONNECT STATION 5'-0" AFF. (TYPICAL FOR 20.)

PLUMBING PIPING MAY BE RACKED ON A TRAPEZE HANGER TIGHT TO WALL. TYPICAL.

12" W BY 10' LONG TRENCH DRAIN, H=20 RATED. TYPICAL.

6" SANITARY UNDER SLAB TO OIL-WATER SEPARATOR.

DOWN TO BELOW STEEL. KEEP PIPING TIGHT TO STEEL STRUCTURE AND COORDINATE WITH 4" SPRINKLER PIPE.

1 1/2" COMPRESSED AIR DOWN TO AIR COMPRESSOR AT FLOOR IN THIS AREA. COORDINATE EXACT LOCATION OF DROP IN THE FIELD WITH THE OWNER. REFER TO ADD / ALTERNATE #1 ON P-001.

KEEP PIPING TIGHT TO STEEL STRUCTURE AND COORDINATE WITH 4" SPRINKLER PIPE AND ALL MECHANICAL EQUIPMENT.

PIPING FOR EXTERIOR WALL HYDRANTS SHALL GO THROUGH FLOOR SUCH THAT HYDRANT IS 5'-0" ABOVE GRADE MAXIMUM FOR ACCESSIBILITY. SEAL PENETRATIONS WATER TIGHT.

1 1/2" COMPRESSED AIR DOWN TO COMPRESSED AIR QUICK CONNECT STATION 5'-0" AFF. (TYPICAL FOR 20.) KEEP TIGHT TO COLUMN.

- NOTES:
1. ALL ABOVE CONCRETE SLAB PIPING WILL BE FULLY EXPOSED IN THE SPACE AND NOT CONCEALED IN WALLS OR CEILING. ALL PIPING SHALL BE HUNG NEATLY AND AT THE SAME ELEVATION WITH MULTIPLE LINES GROUPED TOGETHER.
 2. PROVIDE PVC PROTECTIVE COVER FOR ALL PIPING INSULATION BELOW 10'-0" AFF.
 3. PAINT ALL GAS PIPING, VALVES AND FITTINGS YELLOW AND LABEL PER SPECIFICATIONS.
 4. PAINT ALL COMPRESSED AIR PIPE, VALVES AND FITTINGS BLUE AND LABEL WITH WHITE LETTERS AS PER SPECIFICATIONS.

DCAK - MSA
ARCHITECTURE AND ENGINEERING
53 HUDSON AVENUE
NYACK, NEW YORK 10960
www.DCAK-MSA.com
Email: info@DCAK-MSA.com
Tel 845-353-1300 Fax 845-353-1614

RCM Technologies USA, Inc.
Consulting Engineers
99 Bauer Drive
Suite 101
Oakland, NJ 07436
TEL:(201) 249-8700
EMAIL:bruce.goldman@rcmt.com



OIA Consulting Engineers
50 Broadway, Hawthorne,
New York 10532
914.747.2800
8 West 38th Street, New
York, NY 10018
646.849.4110
olace.com
OLA P/N: NDCA0012

REVISION NUMBER	DATE	MADE BY	APP'D BY	REVISION

RECORD DRAWING CERTIFICATION	
<input type="checkbox"/> AS BUILT - CHANGES AS NOTED	<input type="checkbox"/> AS BUILT - NO CHANGES
CONTRACTOR PROJECT COORDINATOR	
NAME SIGNATURE	NAME SIGNATURE
TITLE DATE	TITLE DATE

WESTCHESTER COUNTY, NEW YORK
DEPARTMENT OF PUBLIC WORKS AND TRANSPORTATION
DIVISION OF ENGINEERING
NEW EQUIPMENT STORAGE BUILDING
RICHARD A. FLYNN, SR. FIRE TRAINING CENTER
VALHALLA CAMPUS, VALHALLA, NEW YORK
PLUMBING NEW WORK PLAN

CONTRACT NUMBER 17-521	SHEET NUMBER P-201
SHEET NO. 34 OF 53	
SCALE: AS SHOWN DATE: 11/16/2021	
DPW FILE NO. 38-47-P-716-0	REV. NO. 0

GENERAL NOTES:

1. ADEQUATE HEAT AND LIGHT SHALL BE PROVIDED IN LOCATIONS WHERE BACKFLOW PREVENTERS ARE TO BE INSTALLED.
2. THE CONTRACTOR SHALL USE ONLY AMERICAN MADE, UL/FM APPROVED VALVES.
3. NO WORK SHALL PROCEED WITHOUT THE WESTCHESTER COUNTY DEPARTMENT OF HEALTH TOWN OF MT. PLEASANT APPROVAL.
4. BACKFLOW PREVENTER ARRANGEMENT SHALL NOT BE ALTERED WITHOUT PRIOR APPROVAL BY WESTCHESTER COUNTY DEPARTMENT OF HEALTH.
5. BACKFLOW PREVENTION SHALL BE PROTECTED FROM THE HIGHEST FLOOD LEVEL.
6. BY-PASSES AROUND BACKFLOW PREVENTER ASSEMBLY SHALL NOT BE PERMITTED.
7. BACKFLOW PREVENTER DEVICE SHALL BE TESTED INITIALLY AND ANNUALLY BY A CERTIFIED AND LICENSED TESTER. AT THE TIME OF INITIAL TESTING PART A AND B OF DOH 1013 FORM MUST BE COMPLETED, TEST RESULTS (FORM DOH 1013) SHALL BE FORWARDED TO WESTCHESTER COUNTY DEPARTMENT OF HEALTH, OWNER AND ENGINEER.
8. THE BACKFLOW PREVENTER SHALL BE REBUILT EVERY FIVE YEARS.
9. ALL PLUMBING WORK SHALL BE PERFORMED BY A LICENSED PLUMBER AND ACCORDING TO DEPARTMENT OF PUBLIC WORKS REGULATIONS.
10. CONTRACTOR SHALL DISINFECT AND PRESSURE TEST BACKFLOW PREVENTER ASSEMBLY BEFORE PLACING IN SERVICE. DISINFECTION SHALL BE IN ACCORDANCE WITH AWWA STANDARD C651-05 WITH THE EXCEPTION OF SECTION 4.4.2.
11. CONTRACTOR SHALL ADEQUATELY SUPPORT ALL PIPING AND DEVICES.

EQUIPMENT NOTES:

1. THE 1½" DOMESTIC WATER BACKFLOW PREVENTER ASSEMBLY SHALL BE WATTS MODEL LF009M2QT 1½" REDUCED PRESSURE ZONE BACKFLOW PREVENTER. ASSEMBLY SHALL BE LEAD FREE SUITABLE FOR PRESSURES UP TO 175 PSI AND TEMPERATURES UP TO 180°F. THE ASSEMBLY SHALL INCLUDE TWO RESILIENT SEATED ISOLATION VALVES, FOUR RESILIENT SEATED TEST COCKS AND AN AIR GAP DRAIN FITTING.
2. THE 4" FIRE SERVICE BACKFLOW PREVENTER ASSEMBLY SHALL BE ZURN MODEL 350DA 4" DOUBLE CHECK DETECTOR ASSEMBLY BACKFLOW PREVENTER WITH OSY SHUTOFF VALVES. ASSEMBLY SHALL BE LEAD FREE SUITABLE FOR PRESSURES UP TO 175 PSI AND TEMPERATURES UP TO 110°F (CONSTANT) AND 140°F (INTERMITTENT). ASSEMBLY SHALL HAVE FDA EPOXY COATED CAST IRON BODY, BRONZE SEALS, STAINLESS STEEL TRIM, BRONZE RELIEF VALVE AND BRONZE BODY TEST COCKS. DEVICE SHALL HAVE (2) INTEGRAL UL/FM OUTSIDE STEM AND YOKE RESILIENT SEATED GATE VALVES.
3. PRESSURE REDUCING VALVE (PRV): WATTS LFN223BS WITH ADJUSTABLE PRESSURE RANGE.
4. BACKWATER VALVE: WATTS BV-200 IN-LINE BACKWATER VALVE.
5. THE 1½" DOMESTIC WATER METER WITH INTEGRAL STRAINER SHALL BE SUBJECT TO THE REVIEW AND APPROVAL OF THE LOCAL WATER UTILITY. FINAL WATER METER AND SIZE, MODEL, AND DIMENSIONS SHALL BE DETERMINED & APPROVED BY THE LOCAL WATER UTILITY. THE PLUMBING CONTRACTOR IS RESPONSIBLE FOR COORDINATION AND INSTALLATION AND ALL RELATED WATER DEPARTMENT FEES.

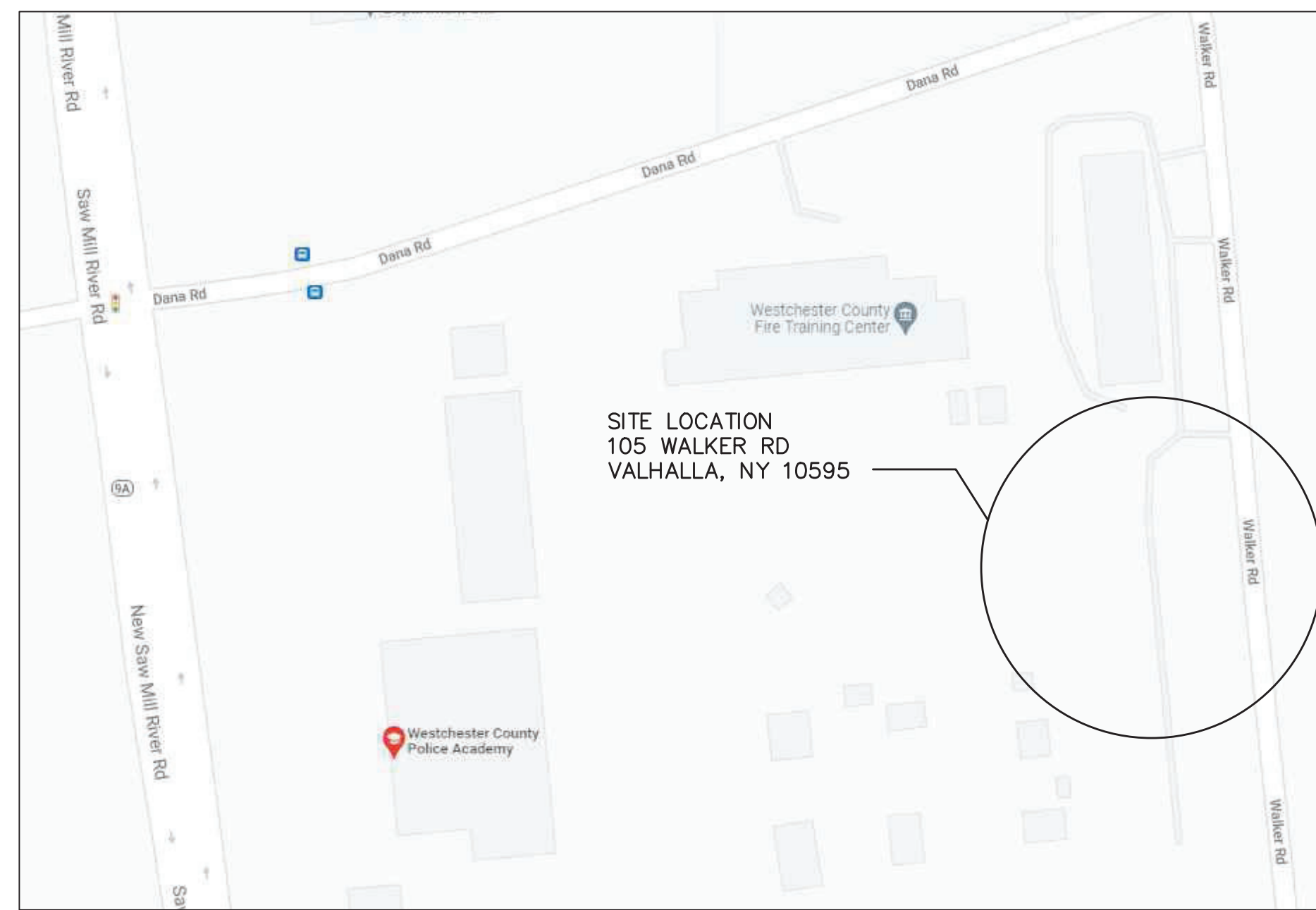
INSTALLATION NOTES:

- A. NO STRAINER IS TO BE USED ON A FIRE LINE WITHOUT INSURANCE UNDERWRITER APPROVAL.
- B. ASSEMBLIES SHOULD BE SPECIFIED AND INSTALLED WITH MANUFACTURER SUPPLIED VALVES.
- C. WATER LINES SHOULD BE THOROUGHLY FLUSHED BEFORE INSTALLATION OF DEVICE TO PREVENT DEBRIS FOULING THE DEVICE CHECK VALVES.
- D. DEVICES MUST BE MOUNTED HORIZONTALLY UNLESS APPROVED FOR VERTICAL INSTALLATION.
- E. ASSEMBLIES SHOULD NOT BE INSTALLED IN AREAS CONTAINING CORROSIVE OR TOXIC GASES WHICH COULD RENDER THE DEVICE INOPERABLE.

NOTE: INSTALLATION SHALL BE IN ACCORDANCE WITH WESTCHESTER COUNTY DEPARTMENT OF HEALTH REQUIREMENTS.

UNAUTHORIZED ALTERATION OR ADDITION TO THIS DOCUMENT IS A DIRECT VIOLATION OF SECTION 7209 (2) OF THE NEW YORK STATE EDUCATION LAW

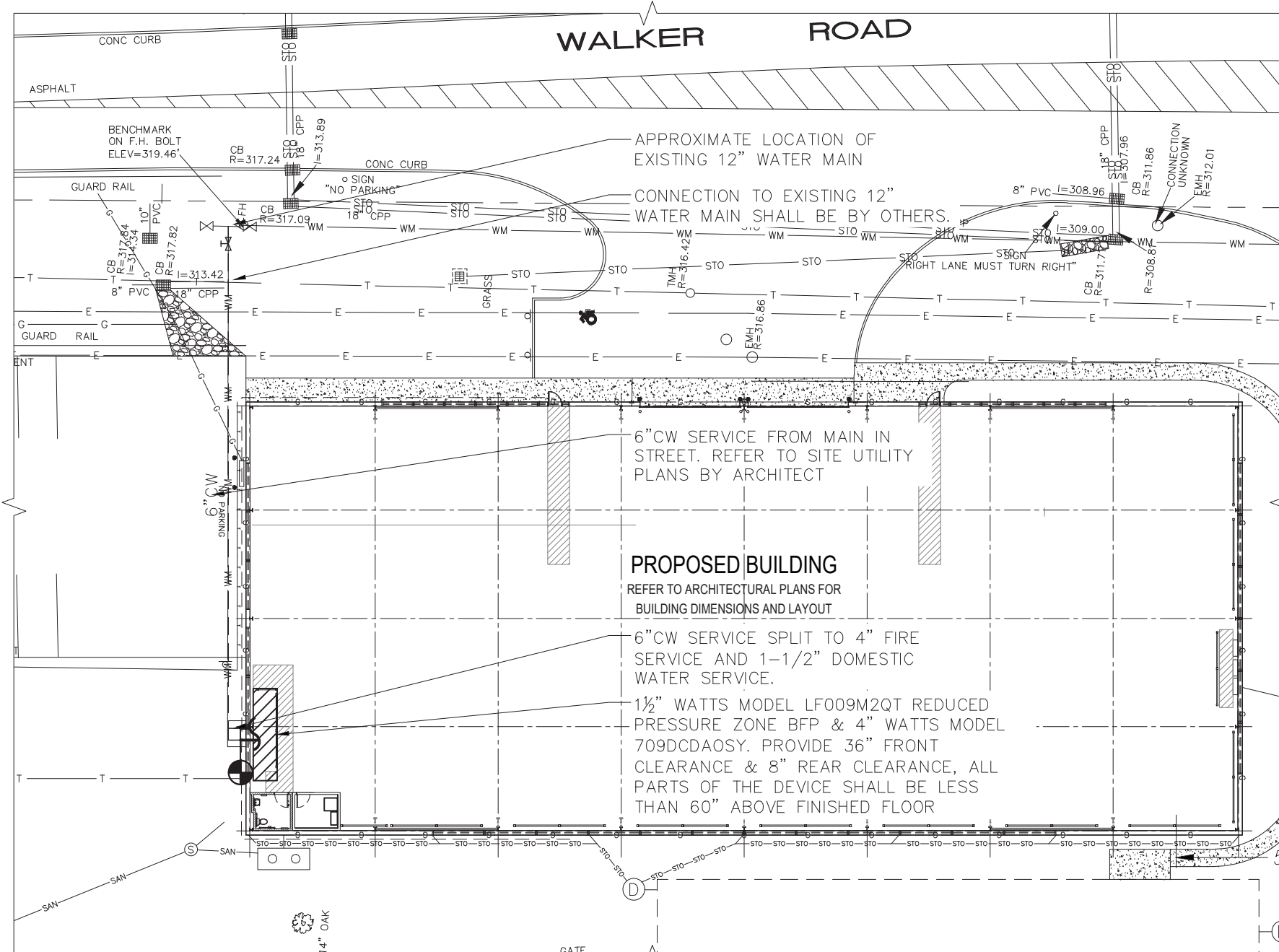
ONLY COPIES FROM THE ORIGINAL OF THIS DRAWING THAT ARE MARKED WITH THE ORIGINAL SEAL AND SIGNATURE OF THE ENGINEER SHALL BE CONSIDERED AS TRUE VALID COPIES.



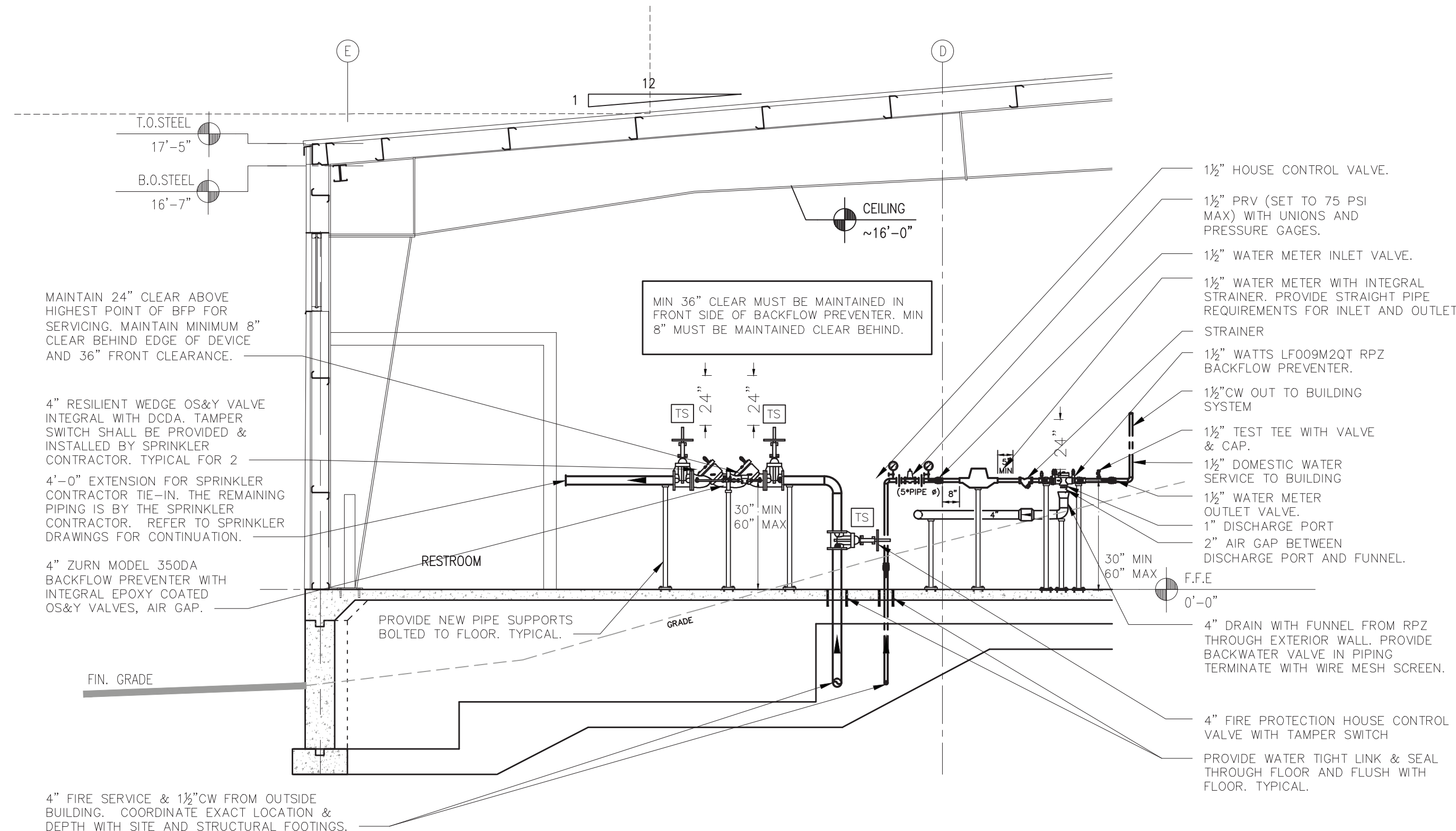
2 SITE LOCATION MAP
SCALE: NTS

SYMBOLS AND ABBREVIATIONS		
SYMBOL	ABBREVIATION	DESCRIPTION
---	CW	COLD WATER
-	AFF	ABOVE FINISHED FLOOR
-	BFP	BACK FLOW PREVENTER
-	DCV	DOUBLE CHECK VALVE
-	DN.	ELBOW DOWN
-	MAX.	MAXIMUM
-	MIN.	MINIMUM
-	PC	PLUMBING CONTRACTOR
-	RPZ	REDUCED PRESSURE ZONE
-	TYP	TYPICAL
▶	-	DIRECTION OF FLOW

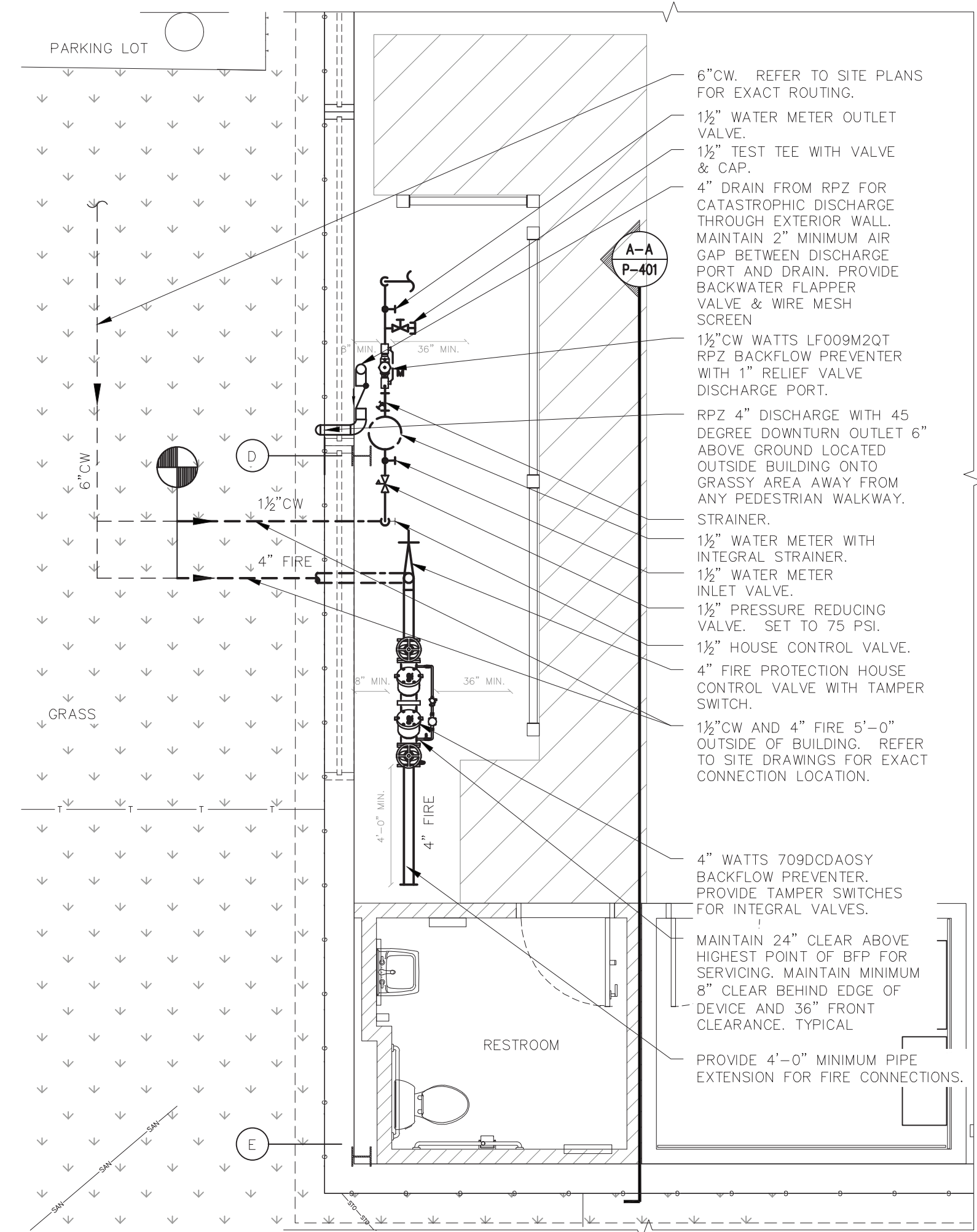
BUILDING INFORMATION
ADDRESS: 105 WALKER ROAD, VALHALLA, NY 10595
COUNTY: WESTCHESTER COUNTY
SITE ELEVATION: THE SITE IS OUTSIDE OF THE 100 YEAR FLOOD PLAIN.



4 SITE PLAN
SCALE: 1/32" = 1'-0"
NORTH



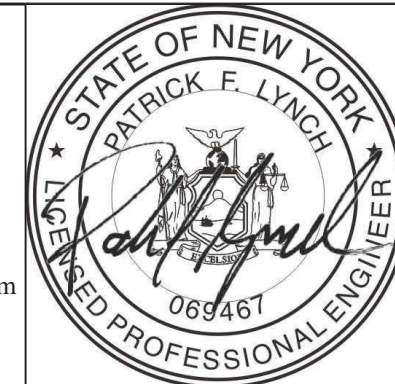
3 PLUMBING ELEVATION A-A
SCALE: 1/4" = 1'-0"



1 PLUMBING NEW WORK PART PLAN
SCALE: 1/4" = 1'-0"
NORTH

DCAK - MSA
ARCHITECTURE AND ENGINEERING
53 HUDSON AVENUE
NYACK, NEW YORK 10960
www.DCAK-MSA.com
Email: info@DCAK-MSA.com
Tel 845-353-1300 Fax 845-353-1614

RCM Technologies USA, Inc.
Consulting Engineers
99 Bauer Drive
Suite 101
Oakland, NJ 07436
TEL:(201) 249-8700
EMAIL:bruce.goldman@rcmt.com



OLA Consulting Engineers
50 Broadway, Hawthorne,
New York 10532
914.747.2800
8 West 38th Street, New
York, NY 10018
646.849.4110
olace.com
OLA P/N: NDCA0012

REVISION NUMBER	DATE	MADE BY	APP'D BY	REVISION

RECORD DRAWING CERTIFICATION			
<input type="checkbox"/>	AS BUILT - CHANGES AS NOTED	<input type="checkbox"/>	AS BUILT - NO CHANGES
CONTRACTOR		PROJECT COORDINATOR	
NAME	SIGNATURE	NAME	SIGNATURE
TITLE	DATE	TITLE	DATE

WESTCHESTER COUNTY, NEW YORK
DEPARTMENT OF PUBLIC WORKS AND TRANSPORTATION
DIVISION OF ENGINEERING
NEW EQUIPMENT STORAGE BUILDING
RICHARD A. FLYNN, SR. FIRE TRAINING CENTER
VALHALLA CAMPUS, VALHALLA, NEW YORK
PLUMBING BACKFLOW PREVENTER PLAN

CONTRACT NUMBER 17-521	SHEET NUMBER P-401
SHEET NO. 35 OF 53	
SCALE: AS SHOWN DATE: 11/16/2021	REV. NO. 0
DPW FILE NO. 38-47-P-717-0	

