

**A NEW 108-ROOM
COURTYARD BY
MARRIOTT
HOTEL & SUITES**

**Turner Road
Woodbury, New York
location #12121**

for
**RAINBOW
ENTERPRISES**

**4758 Highway 28
Cooperstown, NY**

REVISION DATES

UNAUTHORIZED ALTERATIONS OR
ADDITIONS TO THIS DRAWING ARE
A VIOLATION OF STATE
EDUCATION LAW ARTICLES 145
AND 147.

THIS DRAWING IS AN INSTRUMENT
OF SERVICE FOR RAINBOW
ENTERPRISES, AND MAY NOT BE
REPRODUCED WITHOUT THE
EXPRESS CONSENT OF THE
OWNER AND THE ARCHITECT

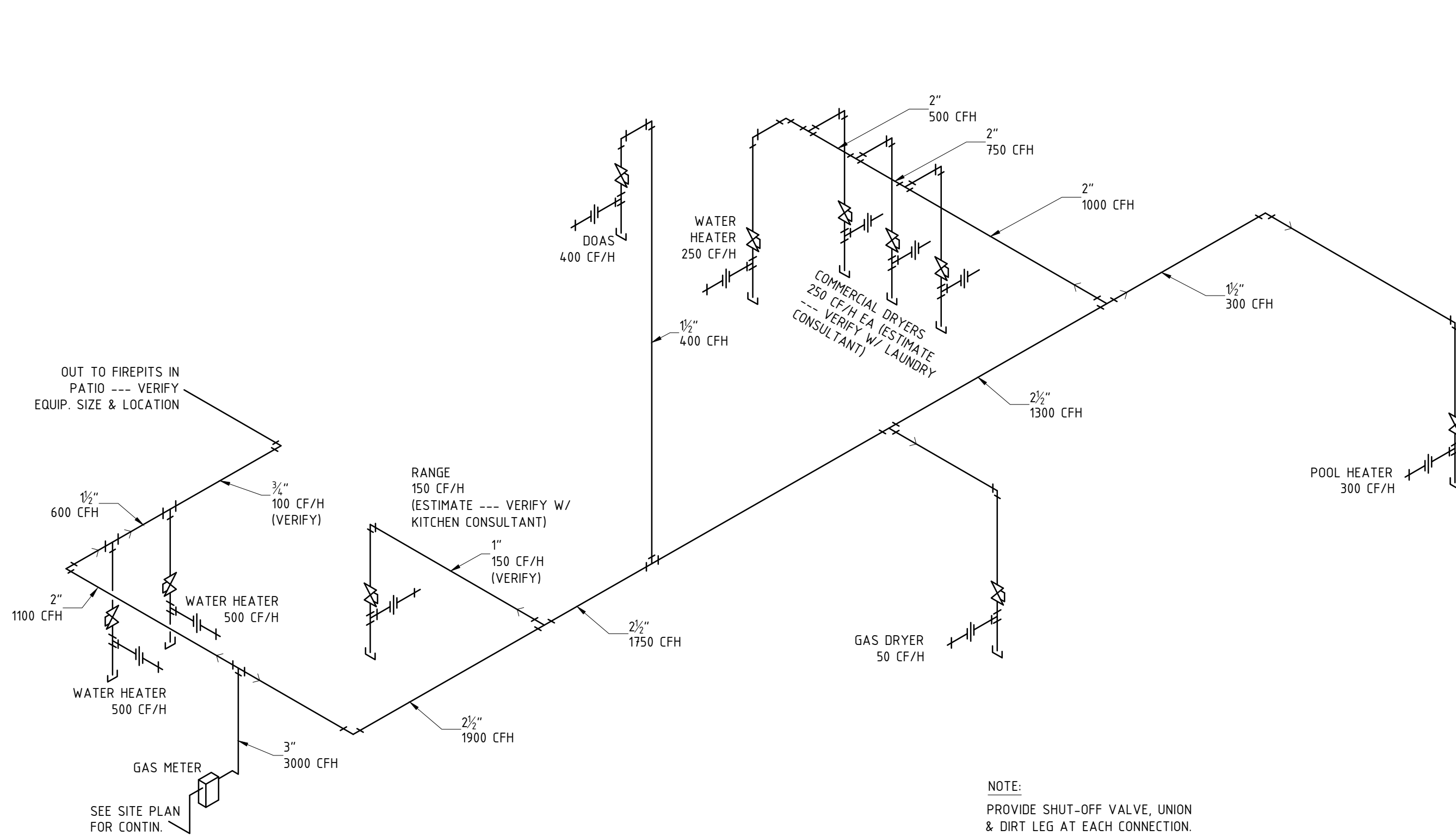
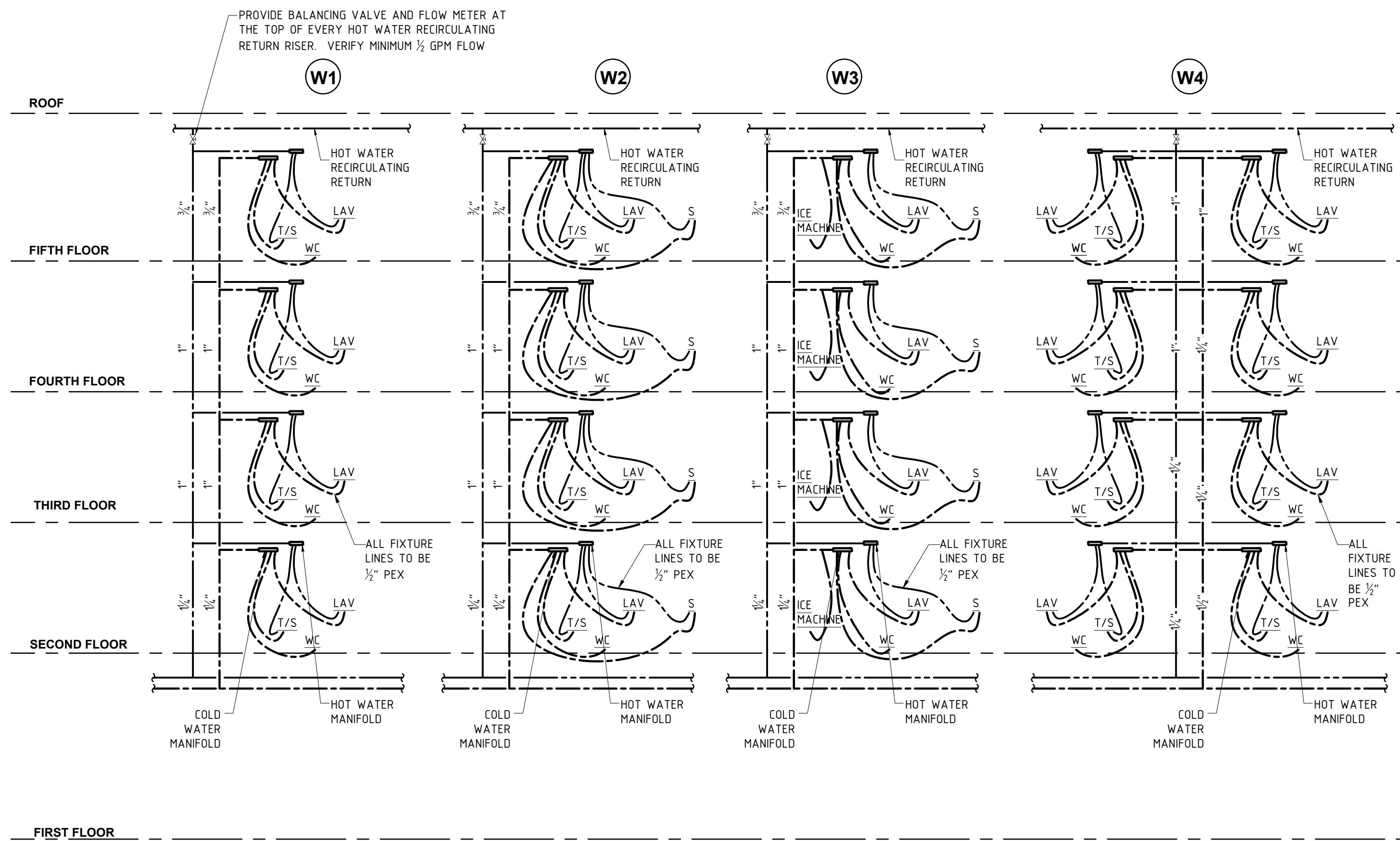
DRAWING TITLE
**PLUMBING SCHEDULE &
DIAGRAMS: WATER, SAN.,
GAS & FIRE**

DATE
MARCH 1, 2021

PROJECT NUMBER
17971

SHEET NUMBER

P500



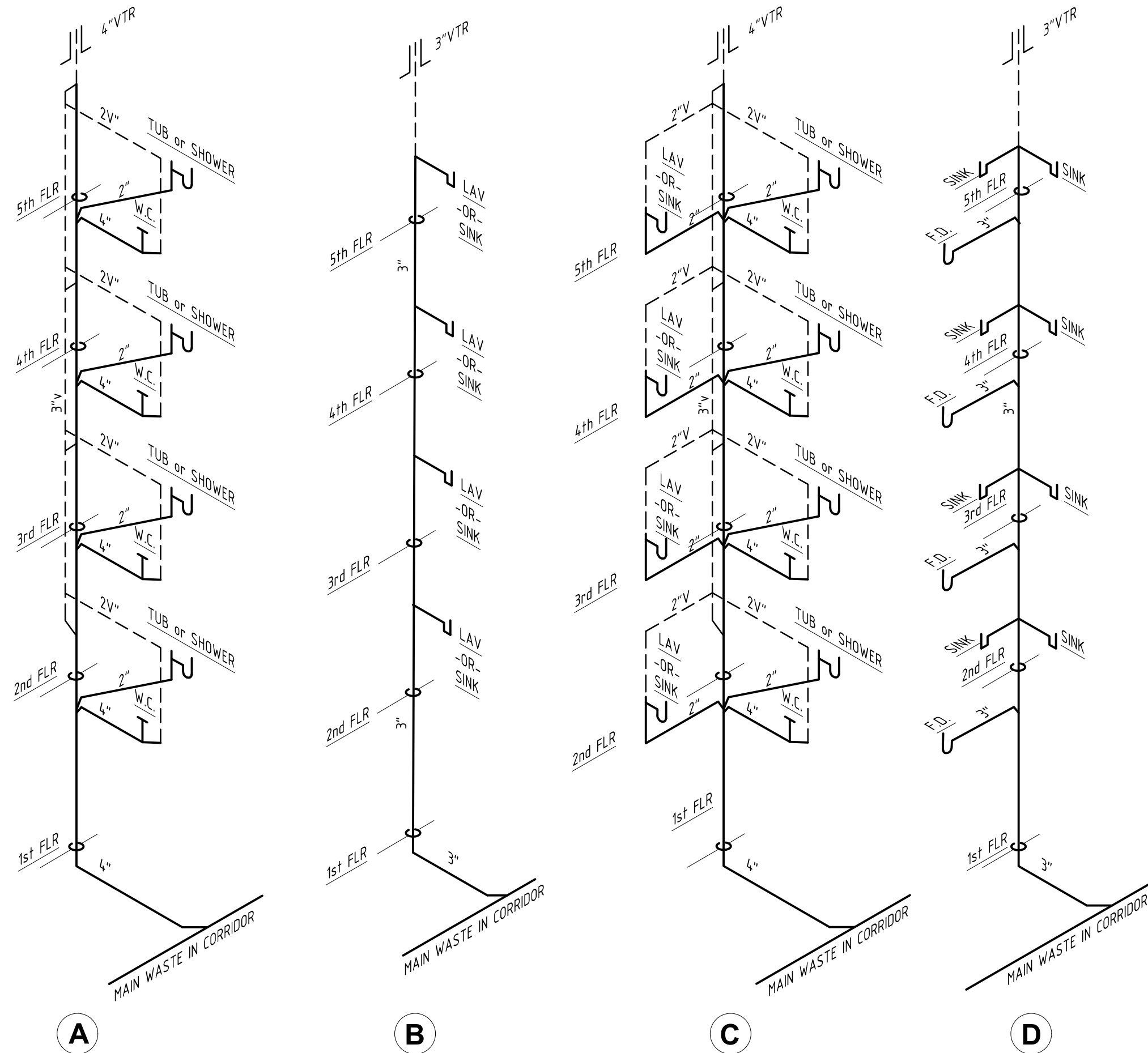
12 DOMESTIC WATER RISER DIAGRAMS
P500

32 FUEL GAS RISER DIAGRAM
P500

FIXTURE	NO.	WASTE		WATER	
		FIXTURE UNITS	TOTAL D.F.U.	FIXTURE UNITS	TOTAL W.S.F.U.
BATHROOM GROUPS	112	5	560	3.6	403
SINKS	4	2	8	1.4	6
FLUSH VALVES	5	8	40	5	25
LAVATORY	7	1	7	2	14
EMPLOYEE LOUNGE SINK	1	2	2	3	3
HAND SINK	1	1	1	1.4	2
COMMERCIAL CLOTHES WASHER	3	6	18	10	30
RESIDENTIAL CLOTHES WASHER	1	3	3	4	4
ICE MAKER	4	-	-	1	5
COFFEE BREWER	1	-	-	1	1
ICED TEA BREWER	1	-	-	1	1
JUICE DISPENSER	1	-	-	1	1
MOP BASIN	2	3	6	3	6
EMERGENCY EYEWASH	3	1	3	1	3
WALL HYDRANTS	6	-	-	2.5	15
FLOOR DRAINS	16	2	32	-	-
SCULLERY SINK	1	3	3	3	3
DISHWASHER	1	3	3	3	3
DRINKING FOUNTAIN	2	1	2	1	2

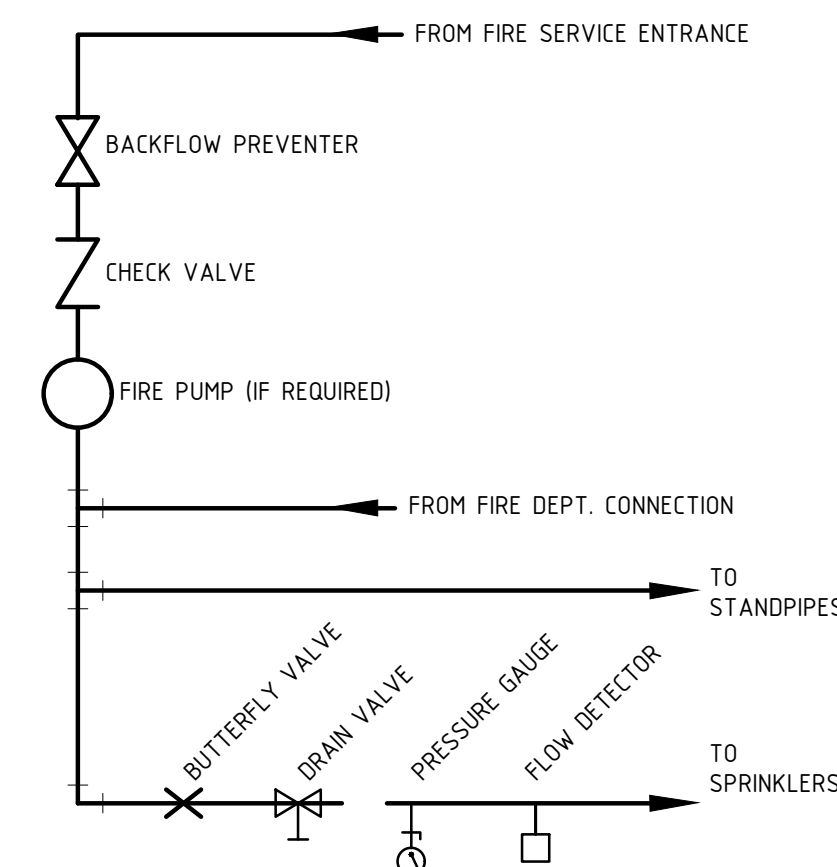
BUILDING TOTALS:
688 DFU TO SANITARY SYSTEM
527 WSFU = 130 GPM PEAK DOMESTIC WATER DEMAND

MARK	FIXTURE TYPE	MANUFACTURER MFR.'S NO.	MINIMUM SIZE UTILITY TO FIXTURE				
			WASTE	HOT WATER	COLD WATER	FUEL GAS	VENT
EWS	EMERGENCY EYEWASH	HAWS 7260B	1 1/4"	1/2"	1/2"	-	1 1/4"
FLD	FLOOR DRAIN	SEE SPEC. 223000	VARIES	-	1/2"	-	VARIES
HB	HOSE BIBB	SEE SPEC. 223000	-	-	1/2"	-	-
HBF	FREEZE-PROOF HOSE BIBB	SEE SPEC. 223000	-	-	1/2"	-	-
MOP-01	MOP SINK	SEE SPEC. 224000b	3"	1/2"	1/2"	-	1 1/4"
SHR-14	ROLL-IN SHOWER	SEE SPEC. 224000b	2"	1/2"	1/2"	-	1 1/2"
SHR-16	ADA SHOWER	SEE SPEC. 224000b	2"	1/2"	1/2"	-	1 1/2"
SNK-03	LAVATORY-EMPLOYEE	SEE SPEC. 224000b	1 1/4"	1/2"	1/2"	-	1 1/4"
SNK-04	LAVATORY-PUBLIC	SEE SPEC. 224000b	1 1/4"	1/2"	1/2"	-	1 1/4"
SNK-05	BREAKROOM SINK	SEE SPEC. 224000b	1 1/2"	1/2"	1/2"	-	1 1/4"
SNK-41	LAVATORY-GUESTROOM	SEE SPEC. 224000b	1 1/4"	1/2"	1/2"	-	1 1/4"
SNK-42	LAVATORY-ADA GUESTROOM	SEE SPEC. 224000b	1 1/4"	1/2"	1/2"	-	1 1/4"
SVS-02	LAUNDRY SINK	SEE SPEC. 224000b	1 1/2"	1/2"	1/2"	-	1 1/4"
TUB-08	BATHTUB	SEE SPEC. 224000b	2"	1/2"	1/2"	-	1 1/2"
TUB-09	ADA BATHTUB	SEE SPEC. 224000b	2"	1/2"	1/2"	-	1 1/2"
URN-01	URINAL	SEE SPEC. 224000b	2"	---	1"	-	1 1/2"
WCL-05	WATER CLOSET-PUBLIC	SEE SPEC. 224000b	3"	---	1"	-	2"
WCL-16	WATER CLOSET-GUESTROOM	SEE SPEC. 224000b	3"	---	1/2"	-	2"
WCR	WATER COOLER	HAWS 1011	1 1/4"	---	1/2"	-	1 1/4"
WCR-51	HYDRATION STATION	SEE SPEC. 224000b	1 1/4"	---	1/2"	-	1 1/4"
WH1	WATER HEATER	INTELLIHOT IN501	3/4"	1 1/2"	1 1/2"	1 1/2"	
WH2	WATER HEATER	INTELLIHOT IN251	3/4"	3/4"	3/4"	3/4"	



- THE SPRINKLER CONTRACTOR SHALL PROVIDE A HYDRAULICALLY DESIGNED AUTOMATIC SPRINKLER AND STANDPIPE SYSTEM IN ACCORDANCE WITH THE PROVISIONS OF NFPA 13.
- THE SPRINKLER CONTRACTOR SHALL PROVIDE FULL LAYOUT, DESIGN AND ENGINEERING FOR THE SYSTEMS. ALL CALCULATIONS AND LAYOUT DRAWINGS SHALL BE SUBMITTED TO THE AUTHORITY HAVING JURISDICTION FOR APPROVAL, TO MARRIOTT FOR THEIR APPROVAL, AND TO THE ARCHITECT FOR HIS APPROVAL PRIOR TO COMMENCING WORK.
- ALL SPRINKLER PIPING SHALL BE CONCEALED FROM VIEW (EXCEPT STAIRWELL STANDPIPES). ANY PIPING WHICH IS VISIBLE AFTER INTERIOR FINISHES ARE INSTALLED SHALL BE REMOVED AND RE-ROUTED AT THE SPRINKLER CONTRACTOR'S EXPENSE.
- THE SPRINKLER CONTRACTOR SHALL PERFORM A FLOW TEST WHICH SHALL BE MONITORED BY THE AUTHORITY HAVING JURISDICTION AND CERTIFIED BY A LICENSED ENGINEER.
- THE SPRINKLER CONTRACTOR SHALL PROVIDE ANY STORAGE TANKS, FIRE PUMPS, PIPING, CONTROLS AND FITTINGS REQUIRED FOR A COMPLETE SYSTEM.
- REFER TO THE SPECIFICATIONS FOR COMPLETE DESCRIPTION OF FIRE SUPPRESSION SPRINKLER SYSTEM.

53 SPRINKLER SYSTEM NOTES
P500



14 PLUMBING SYSTEM DEMAND
P500

24 PLUMBING FIXTURE SCHEDULE
P500

34 SANITARY WASTE RISER DIAGRAMS
P500

54 SPRINKLER SYSTEM DIAGRAM
P500