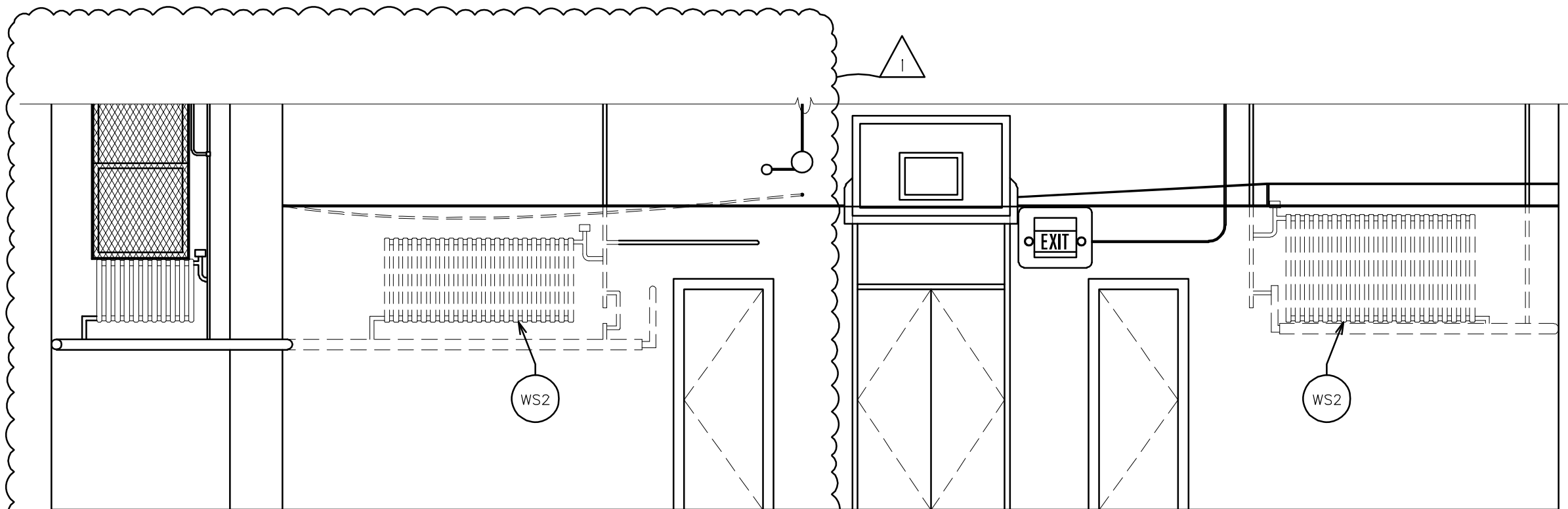
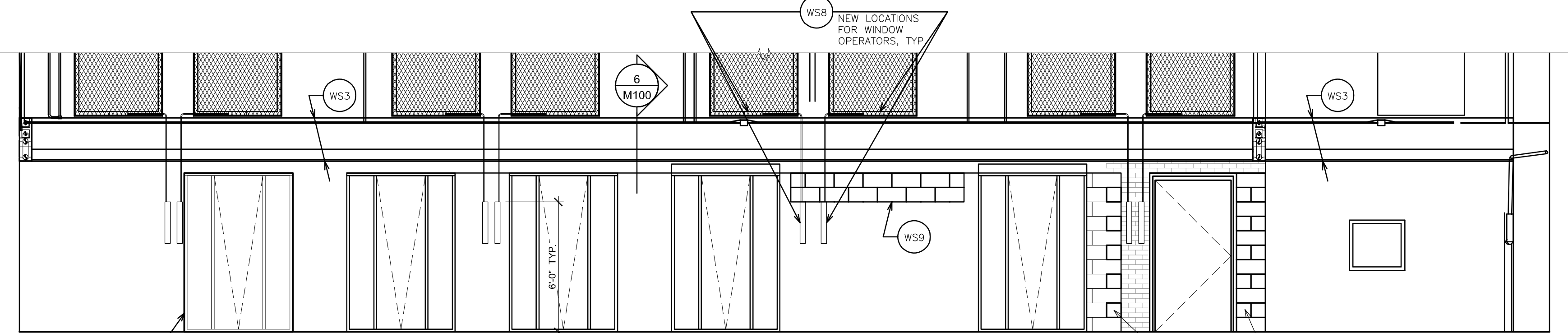


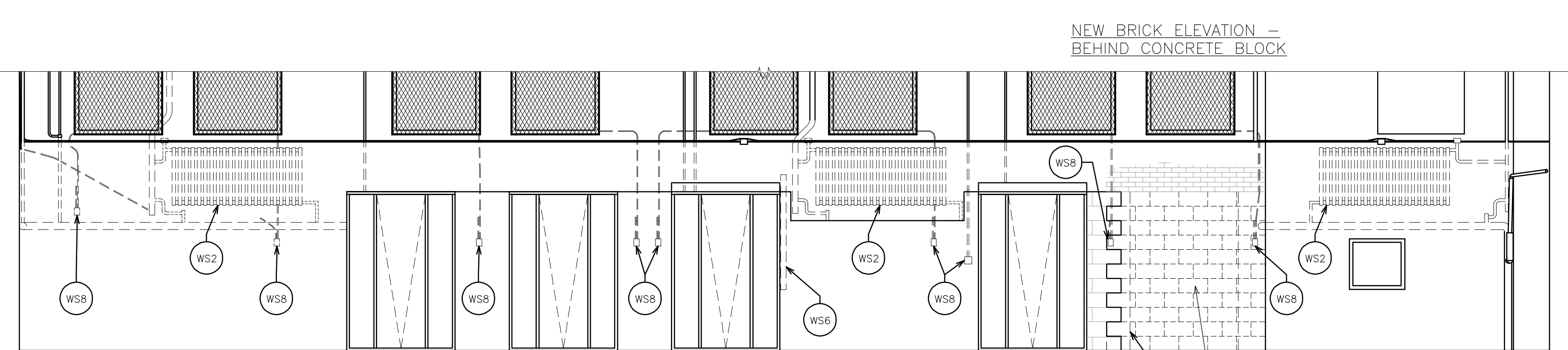
NEW INTERIOR ELEVATION
WEST - GYM/CAFETERIA
SCALE: 1/4" = 1'-0"



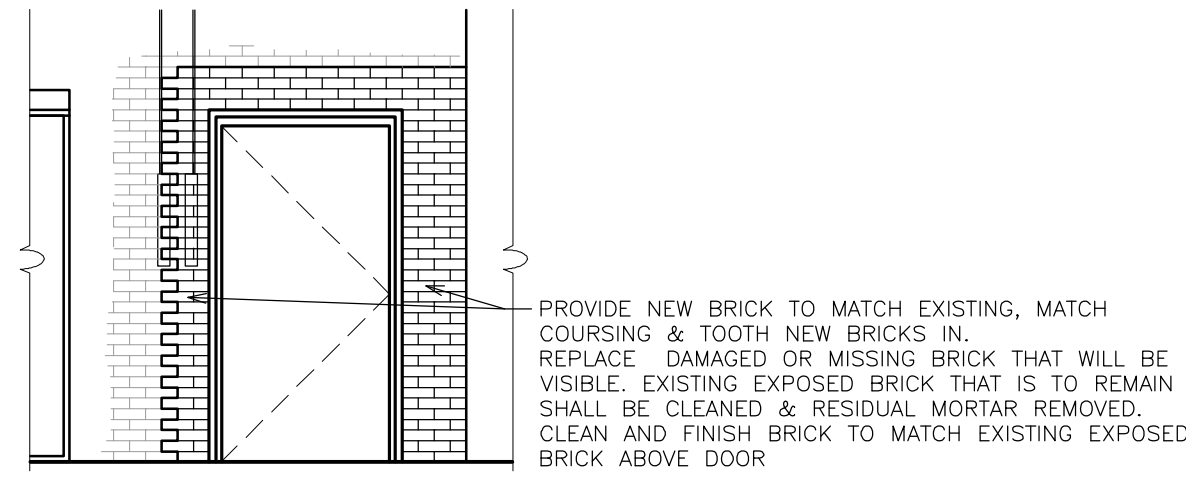
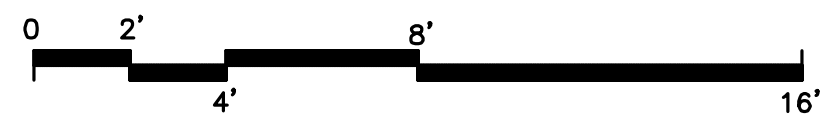
EXISTING INTERIOR ELEVATION
WEST - GYM/CAFETERIA
SCALE: 1/4" = 1'-0"



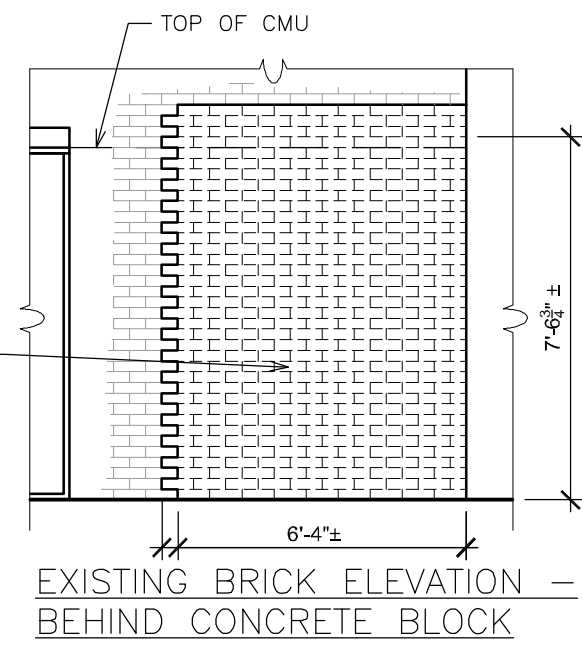
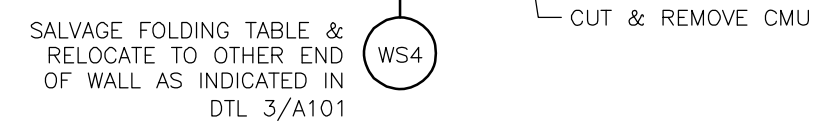
NEW INTERIOR ELEVATION
NORTH - GYM/CAFETERIA
SCALE: 1/4" = 1'-0"



EXISTING INTERIOR ELEVATION
NORTH - GYM/CAFETERIA
SCALE: 1/4" = 1'-0"



NEW BRICK ELEVATION -
BEHIND CONCRETE BLOCK



EXISTING BRICK ELEVATION -
BEHIND CONCRETE BLOCK

WORKSCOPE NOTES - KEYED

RAMP - GYM INTERIOR

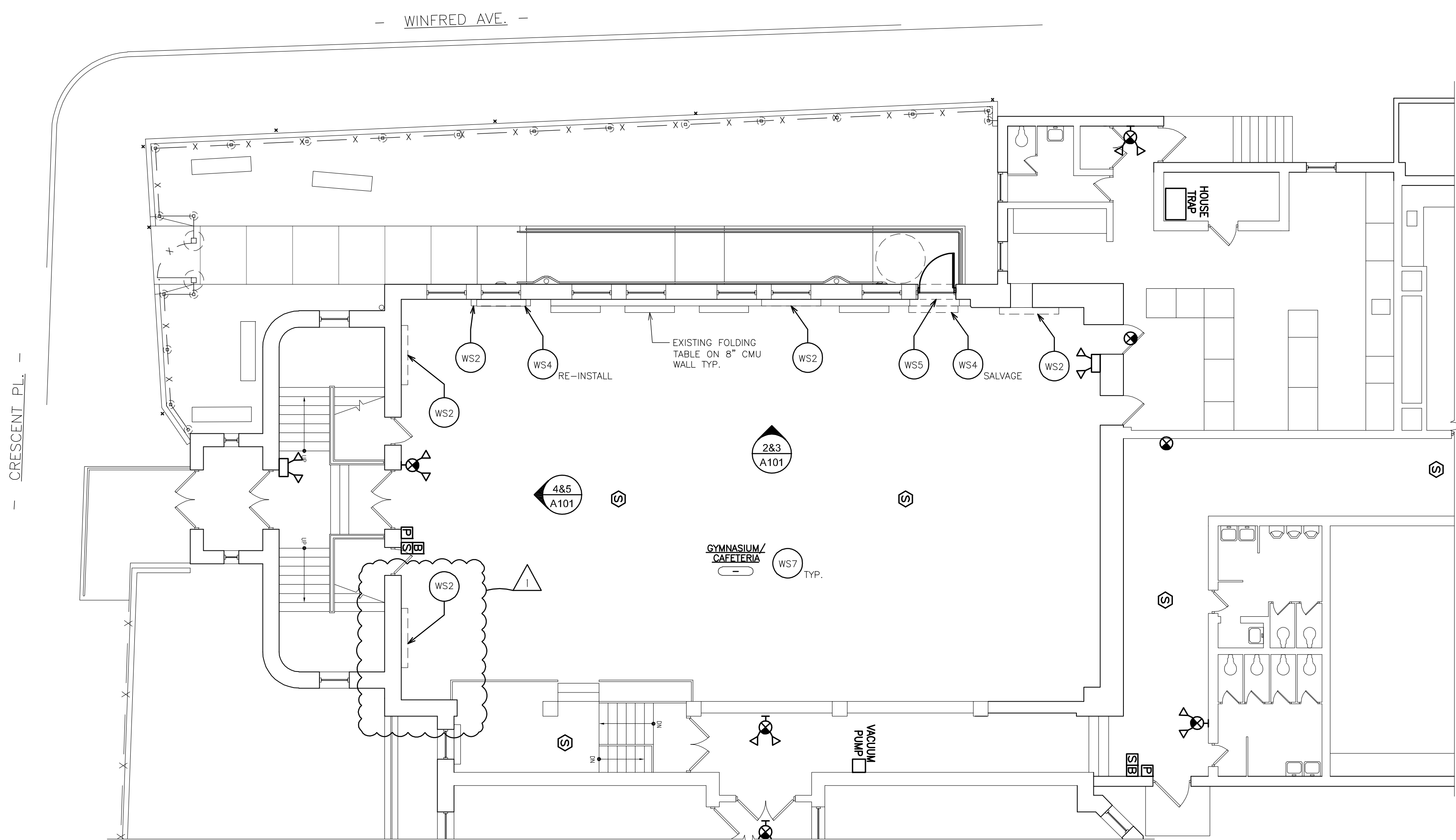
- WS1 IDENTIFY & TEMPORARILY LABEL ALL LINES IN AREA OF WORK, GOING TO /FROM RADIATORS, CEILING MOUNTED EQUIPMENT & EQUIPMENT LOCATED ON FLOOR ABOVE, FOR RECONNECTION TO NEW FIN TUBE (STEAM LINE) & NEW CONDENSATE LINE. REFER TO DWG. M100 AND SPECIFICATIONS.
- WS2 SHUT DOWN BOILERS & DRAIN STEAM LINE. REMOVE RADIATORS INDICATED. CUT CONDENSATE COLLECTION LINE BACK BEHIND FACE OF NEAREST WALL, CAP, SEAL AND ABANDONED IN PLACE. REMOVE STEAM LINES THAT FEED RADIATORS BACK TO MAIN AND CAP. REFER TO DWG. M100 AND SPECIFICATIONS.
- WS3 PROVIDE NEW STEAM FIN TUBE IN PREFINISHED METAL ENCLOSURE WHERE INDICATED. MODIFY STEAM LINES AS REQUIRED OR IF NOT REQUIRED REMOVE UNUSED LINES BACK TO STEAM MAIN, CAP AND SEAL. PROVIDE NEW CONDENSATE LINE, PITCHED FOR POSITIVE DRAINAGE. MODIFY AND RECONNECT ALL LINES GOING TO OR COMING FROM SECOND FLOOR, ENSURE THAT ALL LINES ARE CORRECTLY PICKED UP AND CONNECTED TO NEW WORK. USING AIR PRESSURE TEST SYSTEM TO ENSURE NO LEAKS ARE OCCURRING IN NEW WORK. RE-FILL SYSTEM AND BLEED OFF AIR POCKETS, INCLUDING AT 2ND FLOOR & ALL AREAS AFFECTED BY DRAIN-DOWN. REFER TO DWG. M100 AND SPECIFICATIONS.
- WS4 CAREFULLY SALVAGE WALL-MOUNTED FOLD-UP TABLE. SECURE & STORE AS DIRECTED BY OWNERS REPRESENTATIVE UNTIL REINSTALLATION AT NEW LOCATION AS INDICATED ON PLAN.
- WS5 PIN AND NEEDLE WALL AS REQUIRED AND PROVIDE SHORING TO SUPPORT EXISTING CONSTRUCTION ABOVE NEW DOOR OPENING. CUT AND REMOVE CONCRETE BLOCK, INTERMEDIATE BRICK, INTERMEDIATE MATERIAL AND EXTERIOR STONE AS REQUIRED FOR NEW DOOR AND FRAME. REFER TO DOOR SCHEDULE, DETAILS ON DRAWING A117 AND SPECIFICATIONS. COORDINATE REMOVAL WITH RADIATOR REMOVALS, NEW FIN TUBE AND STEAM LINE WORK.
- WS6 REMOVE WOOD BOARD AND PATCH ALL DISTURBED SURFACES AND FINISH TO MATCH EXISTING ADJACENT.
- WS7 PATCH & FINISH ALL SURFACES DISTURBED BY REMOVALS AND NEW WORK TO MATCH EXISTING, INCLUDING BUT NOT LIMITED TO: HOLES IN WALLS, VCT FLOORING, PAINT, ETC. SURFACES REQUIRING RE-Painting SHALL BE REPAINTED TO MATCH EXISTING, CORNER-TO-CORNER. REFER TO SPECIFICATIONS.
- WS8 REMOVE ALL WINDOW OPERATORS AND ASSOCIATED HARDWARE. PROVIDE NEW WINDOW OPERATION SYSTEM, ULTRAFLEX MEC LINE AS DISTRIBUTED BY BRONZE CRAFT CORPORATION, NASHUA, NH OR APPROVED EQUAL. PROVIDE ENTIRE SYSTEM INCLUDING OPENING MECHANISM, GEARED CONTROL OPERATOR WITH LONG ENCLOSED SPENT TRAVEL TUBE, ALL TRANSMISSION ELEMENTS, BRACKETS AND FASTENERS AS REQUIRED FOR PROPER INSTALLATION AND WINDOW OPERATION. REFER TO ELEVATIONS.
- WS9 PROVIDE CONCRETE BLOCK IN-FILL TO MATCH EXISTING, AS INDICATED ON DRAWINGS. PROVIDE DOWELS SET IN EPOXY, EVERY OTHER CELL, DRILL HOLE AND SET DOWEL IN EPOXY. PROVIDE MESH SLEEVES IF VOIDS ARE ENCOUNTERED. FILL CELLS WITH DOWELS SOLID WITH STRUCTURAL GROUT. FILL TOP (EXPOSED) CELLS SOLID WITH GROUT. MATCH COURSING. PROVIDE BLOCK FILLER PRIMER AND PAINT ENTIRE CMU PORTION OF WALL TO MATCH EXISTING. REFER TO SPECIFICATIONS.

GENERAL NOTES

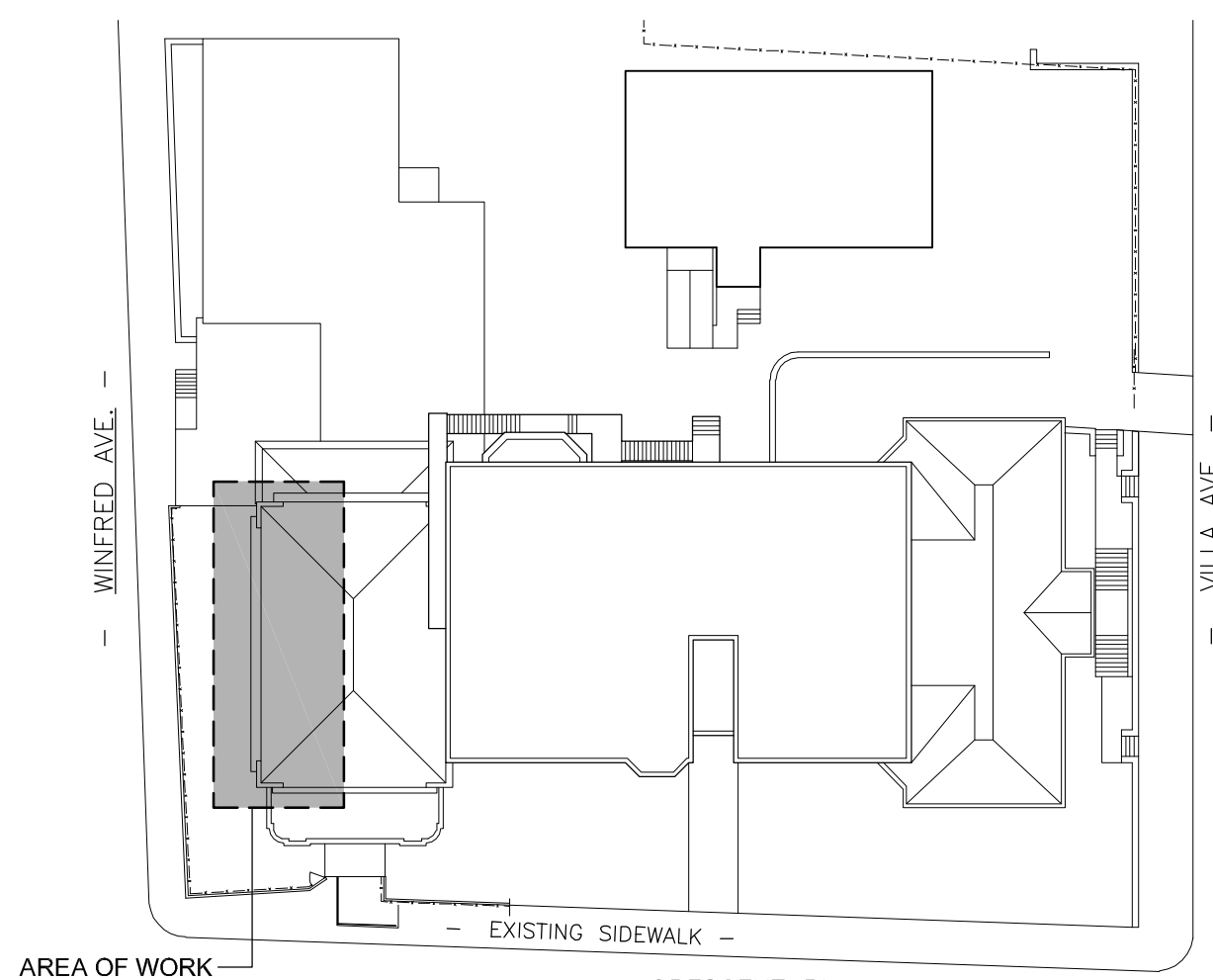
- FOR WORK IN THE COURTYARD REFER TO DRAWING A100.
- FOR MECHANICAL WORK REFER TO DRAWING M100 AND SPECIFICATIONS.
- FOR ELECTRICAL WORK REFER TO DRAWING E100 AND SPECIFICATIONS.

FOR NEW DOOR OPENING

- CONTRACTOR SHALL PROVIDE NEEDLING AND SHORING, WELDING AND DRY-PACKING AS IS REQUIRED TO ENSURE THE SAFETY AND STABILITY OF THE STRUCTURE DURING INSTALLATION OF NEW LINTELS AND DOOR FRAME.
- FOR NEW OPENING CONTRACTOR SHALL CORE DRILL CORNERS AND SAW CUT OPENING, BEING CAREFUL NOT TO OVERCUT CORNERS. REMOVAL OF EXCESS MATERIAL SHALL BE DONE BY HAND. ONLY ROTARY TOOLS SHALL BE USED FOR CUTTING OPERATIONS.
- IF REQUIRED CONTRACTOR SHALL SUBMIT SHORING DRAWINGS SIGNED AND SEALED BY A STATE OF NEW YORK LICENSED PROFESSIONAL ENGINEER.



PARTIAL PLAN
GYM/CAFETERIA
SCALE: 1/8" = 1'-0"



KEYPLAN
SCALE: N.T.S.

AS PER USA CONGRESS ARCHITECTURAL WORKS COPYRIGHT PROTECTION ACT OF 1990 ALL IDEAS AND DESIGNS INCLUDING DERIVATIVES THEREOF, ALL DRAWINGS AND SPECIFICATIONS CONSTITUTE THE ORIGINAL COPYRIGHT WORK BY FULLER & DANKELO, P.C. (F&D). THE DRAWINGS AND SPECIFICATIONS AS INSTRUMENTS OF SERVICE BY F&D ARE CREATED BY F&D FOR THIS PROJECT ONLY AND REMAIN THE PROPERTY OF F&D. ANY REPRODUCTION WITHOUT THE PRIOR CONSENT OF F&D IS PROHIBITED.

48 ENGLWOOD ROAD ELMHURST NEW YORK 10883
TEL 914.899.4444 FAX 914.899.1919
WWW.FULLERDANKELO.COM
Copyright 2021 All Rights Reserved by FULLER & DANKELO P.C.

FULLER & DANKELO
P.C.
ARCHITECTS & PLANNERS

S.E.D. CONTROL NUMBER:
66-23-05-01-014-011

YPS JOB # 10882

PROJECT: YPS YONKERS SCHOOL DISTRICT PS 14 ROSEMARY ANN SPRAGUISA - IMPROVEMENTS	DRAWING TITLE: NEW ADA COMPLIANT RAMP -INTERIOR PLANS, EXISTING & NEW ELEVATIONS & DETAIL
04-13-2021	ADDENDUM 03
01-26-2021	BID SET
10-26-2020	S.E.D.
05-29-2020	REVIEW SET
01-03-2020	REVIEW
DATE	ISSUED TO
SHEET SIZE: 30"x42"	DRAWING NO.:
SCALE: AS NOTED	A101
DRAWN BY: F & D	FILE NO. 19366.00