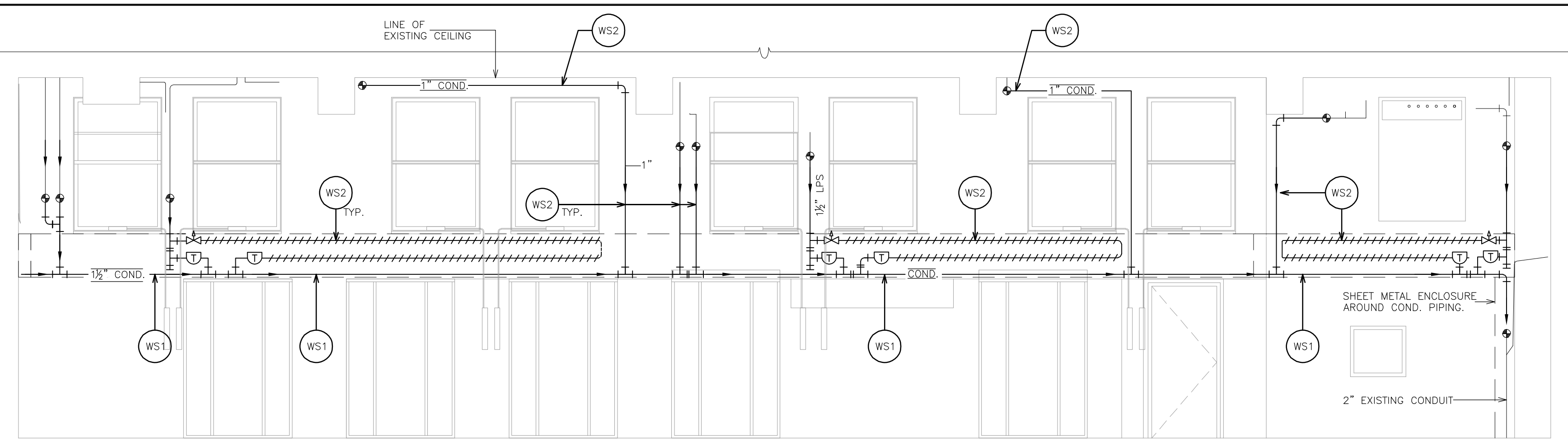
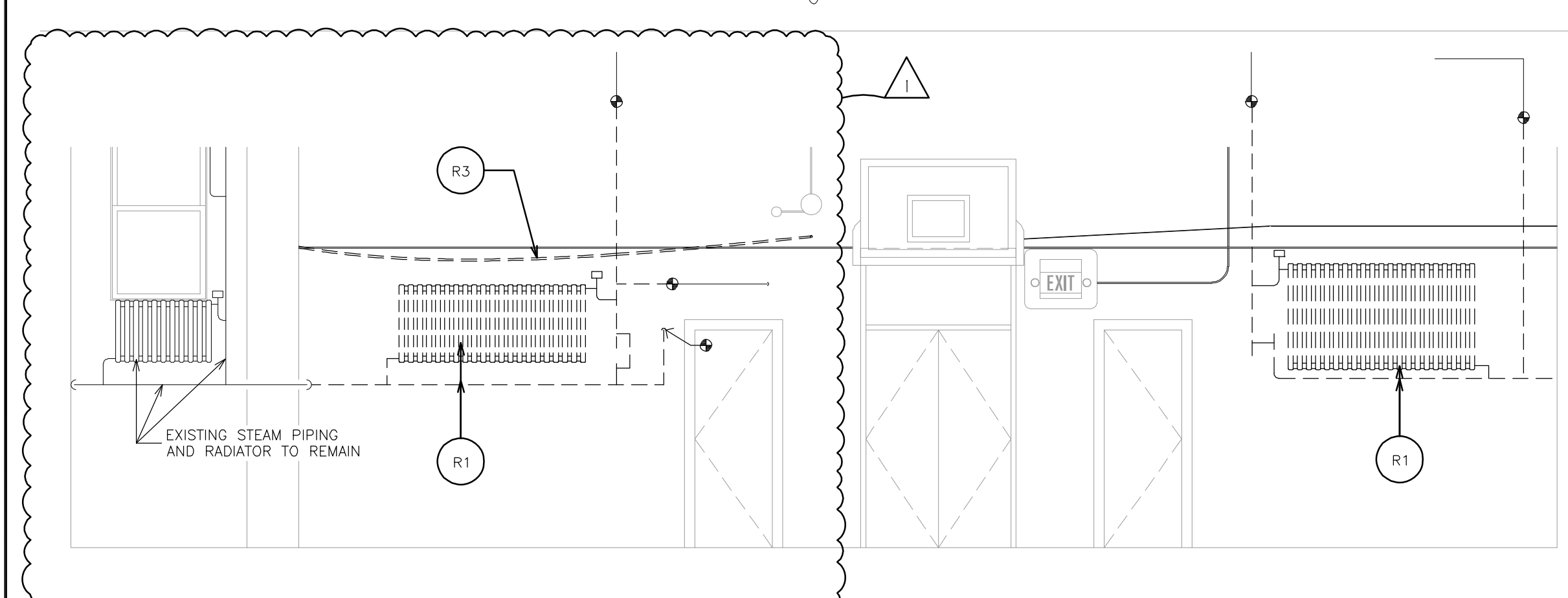


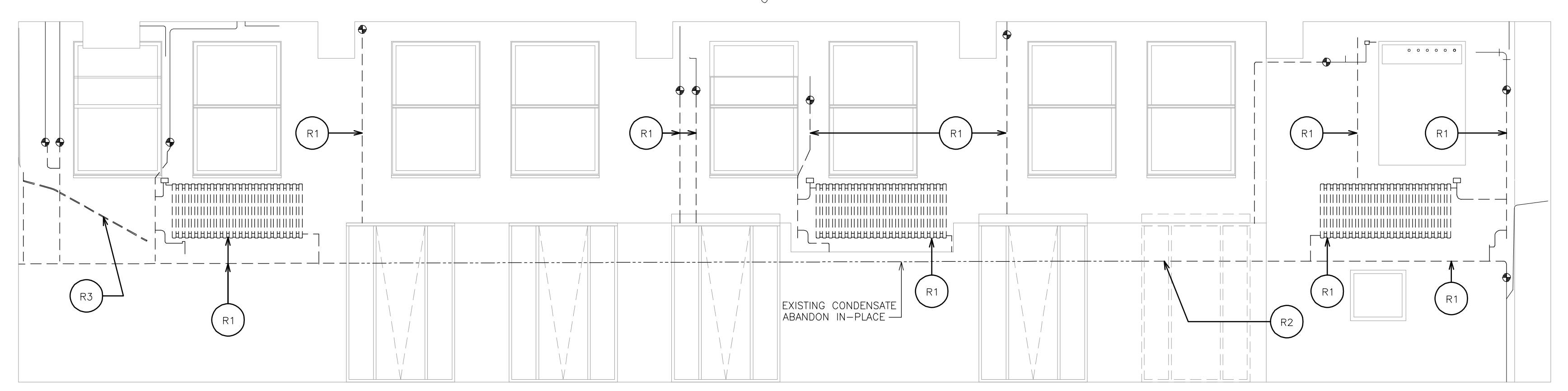
**5 NEW INTERIOR ELEVATION
WEST - GYM/CAFETERIA**
SCALE: 1/4" = 1'-0"



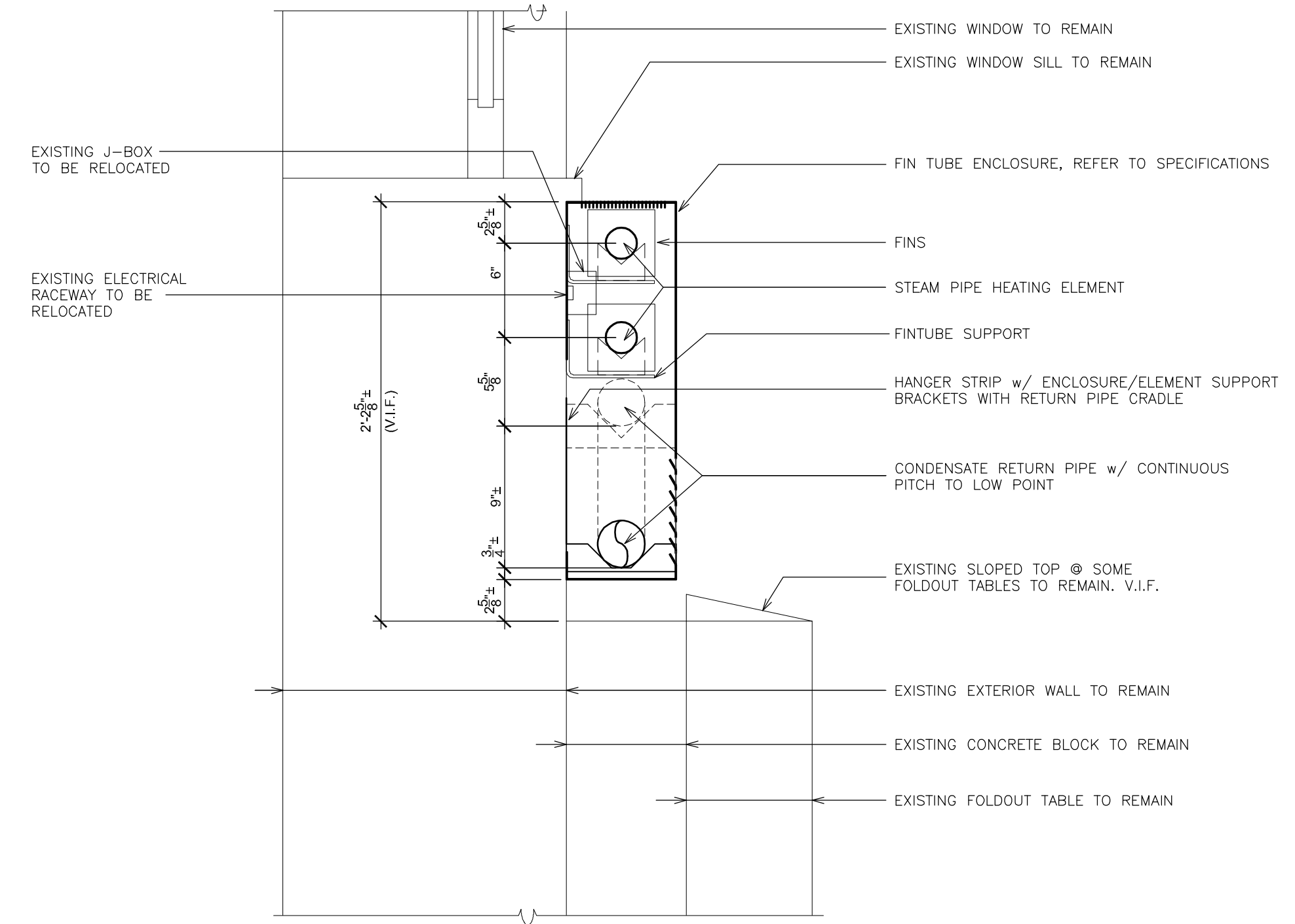
**3 NEW INTERIOR ELEVATION
NORTH - GYM/CAFETERIA**
SCALE: 1/4" = 1'-0"



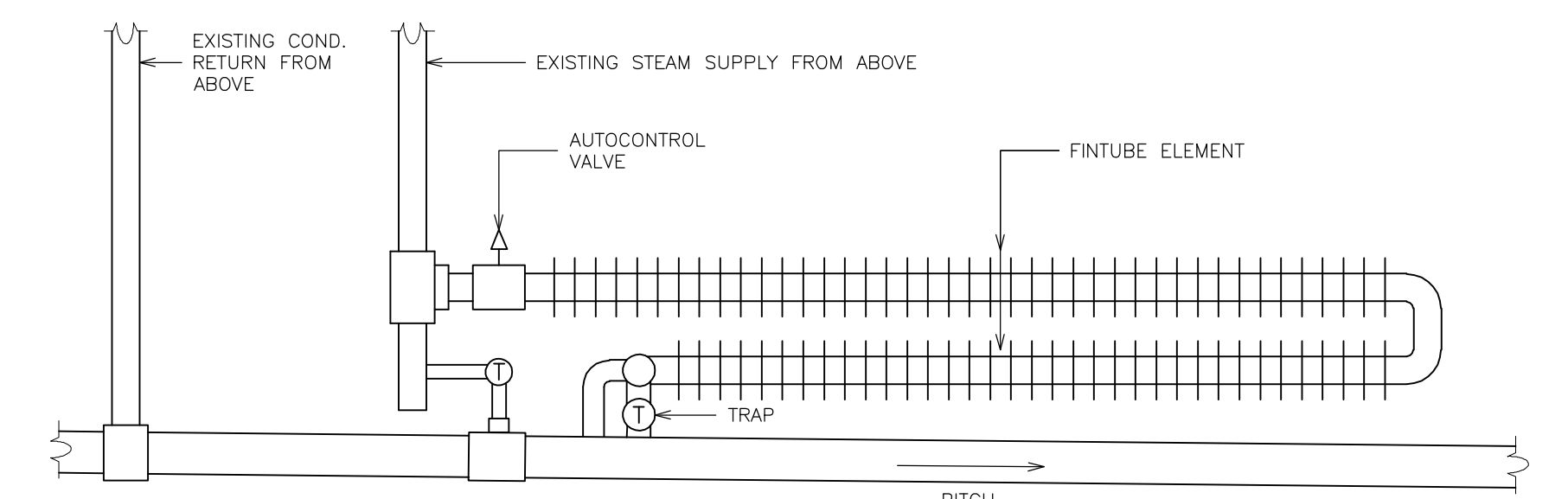
**4 EXISTING INTERIOR ELEVATION
WEST - GYM/CAFETERIA**
SCALE: 1/4" = 1'-0"



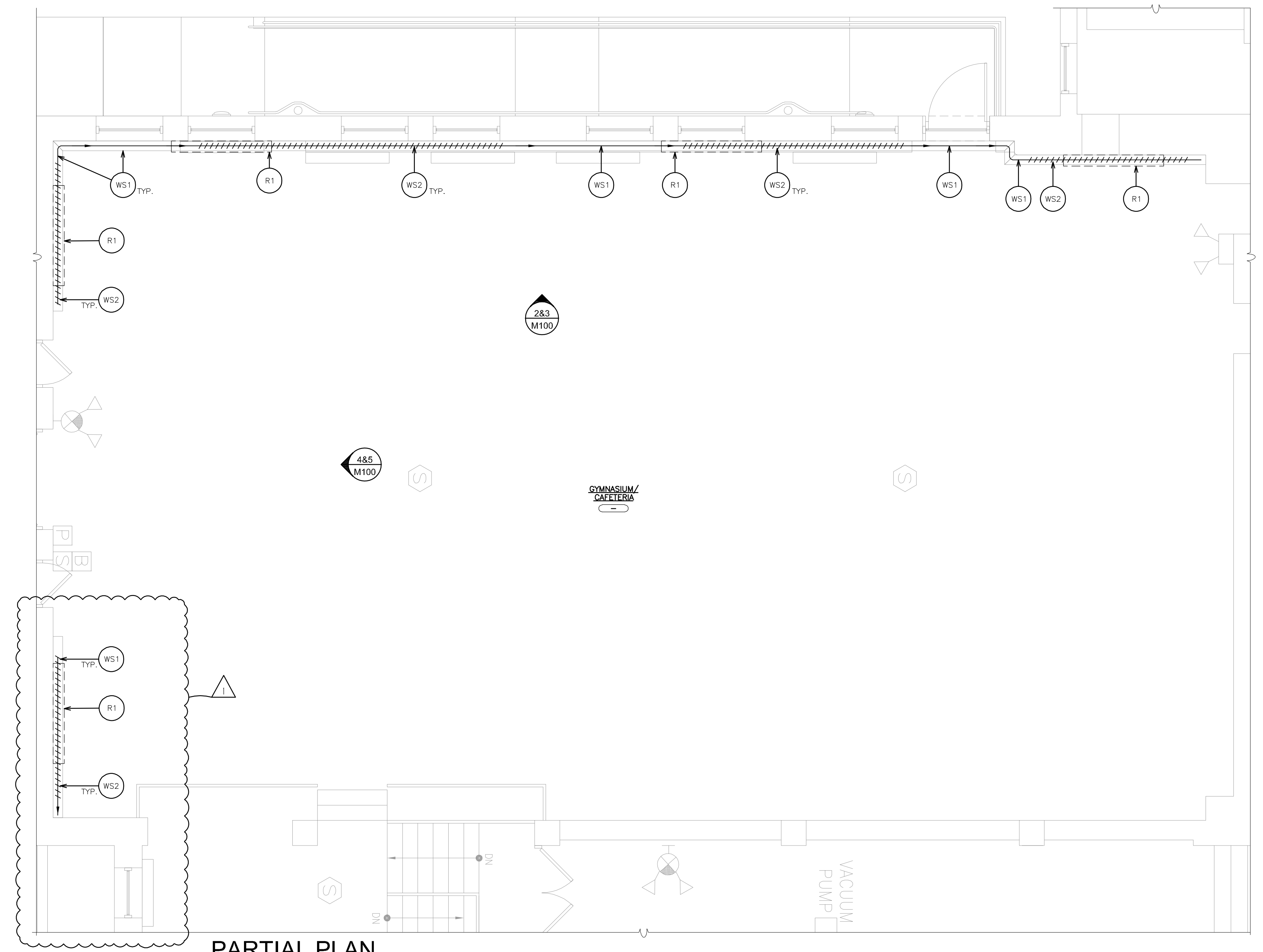
**2 REMOVALS - INTERIOR ELEVATION
NORTH - GYM/CAFETERIA**
SCALE: 1/4" = 1'-0"



**6 DETAIL -
FIN TUBE ENCLOSURE**
SCALE: 1 1/2" = 1'-0"



**7 TYPICAL
PIPING CONFIGURATION**
SCALE: 1" = 1'-0"

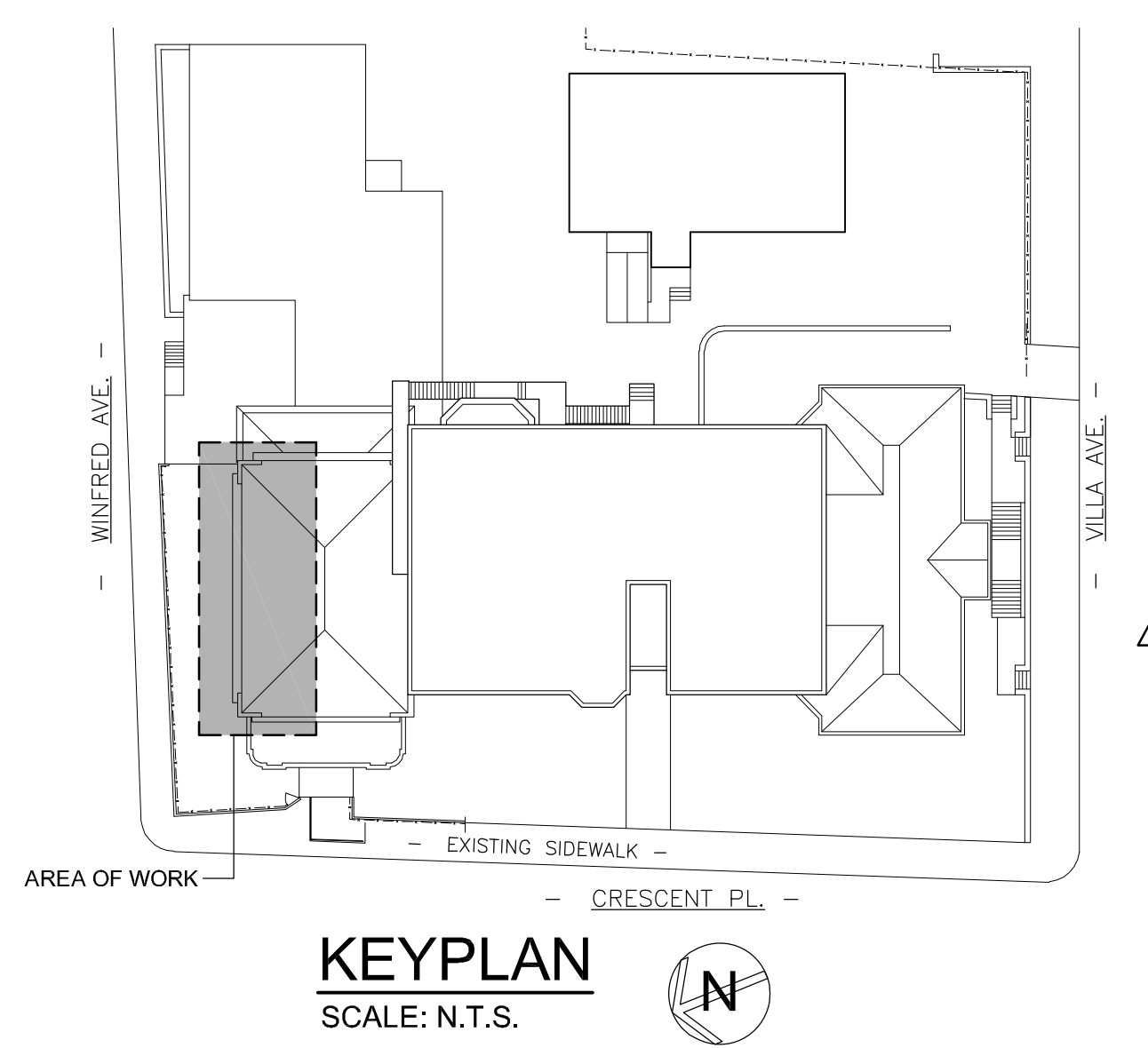


**1 PARTIAL PLAN
GYM/CAFETERIA**
SCALE: 1/4" = 1'-0"

- WORKSCOPE NOTES - KEYED**
- GYM INTERIOR**
- WS1 PROVIDE NEW CONDENSATE RETURN LINE, PITCHED 2" PER FOOT. MODIFY EXISTING CONDENSATE DROPS AS INDICATED & CONNECT TO RETURN LINE. REFER TO ELEVATIONS AND SPECIFICATIONS.
 - WS2 PROVIDE NEW FIN TUBE RADIATION AS INDICATED. PROVIDE NEW SUPPLY LINE, CONNECTED TO MAIN AT CEILING. REFER TO ELEVATIONS AND SPECIFICATIONS.
 - WS3 CUT BACK PNEUMATIC LINES THAT HAVE BEEN DISCONNECTED AND ABANDONED. ARE BEING DISCONNECTED AS PART OF THIS PROJECT OR ARE NO LONGER IN USE. CAP AND SEAL. MODIFY EXISTING PNEUMATIC LINES THAT ARE TO REMAIN. MODIFY & STRAIGHTEN BOWED, LOOSE LINES AND RESECURE TO WALL. REVIEW ROUTING WITH OWNERS REPRESENTATIVE PRIOR TO SECURING EXISTING LINES THAT ARE TO REMAIN.

- LEGEND**
- COND - POINT OF CONNECTION EXISTING TO NEW
 - COND - CONDUIT RETURN PIPING
 - LPS - LOW PRESSURE STEAM SUPPLY
 - Gate Valve - GATE VALVE
 - Auto Control Valve - AUTO CONTROL VALVE
 - Thermostatic Trap - THERMOSTATIC TRAP
 - Fin-Tube Element - FIN-TUBE ELEMENT

- REMOVAL NOTE - KEYED**
- GYM INTERIOR**
- R1 REMOVE EXISTING CAST IRON RADIATION UNIT, ALL ASSOCIATED PIPING, BRACKETS, SUPPORTS AND ASSOCIATED PNEUMATIC CONTROL LINE CUT, DRAIN AND TEMPORARILY CAP EXISTING CONDENSATE DRAINS TO REMAIN. REMOVE EXPOSED PIPING - REMOVE BRANCH SUPPLY LINE BACK TO MAIN LOCATED AT CEILING, CAP & SEAL CLOSED. REMOVE CONDENSATE /RETURN TO CMU, CAP & SEAL END OF CONDENSATE LINE THAT IS TO BE ABANDONED IN PLACE, CONCEALED BEHIND CMU. REMOVE PNEUMATIC CONTROL LINES BACK TO NEAREST JUNCTION /CONTROL, CAP AND SEAL. PATCH & SEAL ALL HOLES IN AREAS OF WORK AND FINISH TO MATCH EXISTING ADJACENT SURFACES.
 - R2 REMOVE SECTION OF CONDENSATE PIPE EXPOSED WHEN CMU IS REMOVED TO INSTALL NEW DOOR, CAP & SEAL END OF PIPE ABANDONED IN PLACE BEHIND CMU.
 - R3 CONTRACTOR SHALL VERIFY PNEUMATIC LINES IN AREA OF WORK ARE CONNECTED AND ACTIVE. DISCONNECTED & IN-ACTIVE LINES ARE TO BE REMOVED. TEMPORARILY MOVE & SUPPORT ACTIVE PNEUMATIC LINES THAT ARE LOOSE & IN THE WAY OF CONSTRUCTION ACTIVITIES.



KEYPLAN
SCALE: N.T.S.

AS PER USA CONGRESS ARCHITECTURAL WORKS COPYRIGHT PROTECTION ACT OF 1990 ALL IDEAS AND DESIGNS INCLUDING DERIVATIVES THEREOF, ALL DRAWINGS AND SPECIFICATIONS CONSTITUTE THE ORIGINAL COPYRIGHT WORK BY FULLER AND DANKELO, P.C. (F&D). THE DRAWINGS AND SPECIFICATIONS AS INSTRUMENTS OF SERVICE BY F&D ARE CREATED BY F&D FOR THIS PROJECT ONLY AND REMAIN THE PROPERTY OF F&D. ANY REPRODUCTION WITHOUT THE PRIOR CONSENT OF F&D IS PROHIBITED.

48 KNOLLWOOD ROAD ELMSFORD NEW YORK 10523
TEL 914.899.4444 FAX 914.899.1717
FULLER & DANKELO, P.C.
Copyright 2021 All Rights Reserved by FULLER & DANKELO, P.C.

**FULLER
DANKELO
P.C.
ARCHITECTS
PLANNERS**

S.E.D. CONTROL NUMBER:
66-23-05-01-014-011

YPS JOB #: 10882

PROJECT: YONKERS SCHOOL DISTRICT PS 14 ROSEMARY ANN BRAGAUSA - IMPROVEMENTS 60 CRESCENT PLACE, YONKERS, NY 10704	04-13-2021	ADDENDUM 03
	01-29-2021	BID SET
	10-26-2020	S.E.D.
	05-29-2020	REVIEW SET
DRAWING TITLE MECHANICAL PLANS AND ELEVATIONS	01-03-2020	REVIEW
	DATE	ISSUED TO
SHEET SIZE 30"x42"	DRAWING NO. M100	
SCALE AS NOTED	FILE NO. 19366.00	
DRAWN BY F & D		