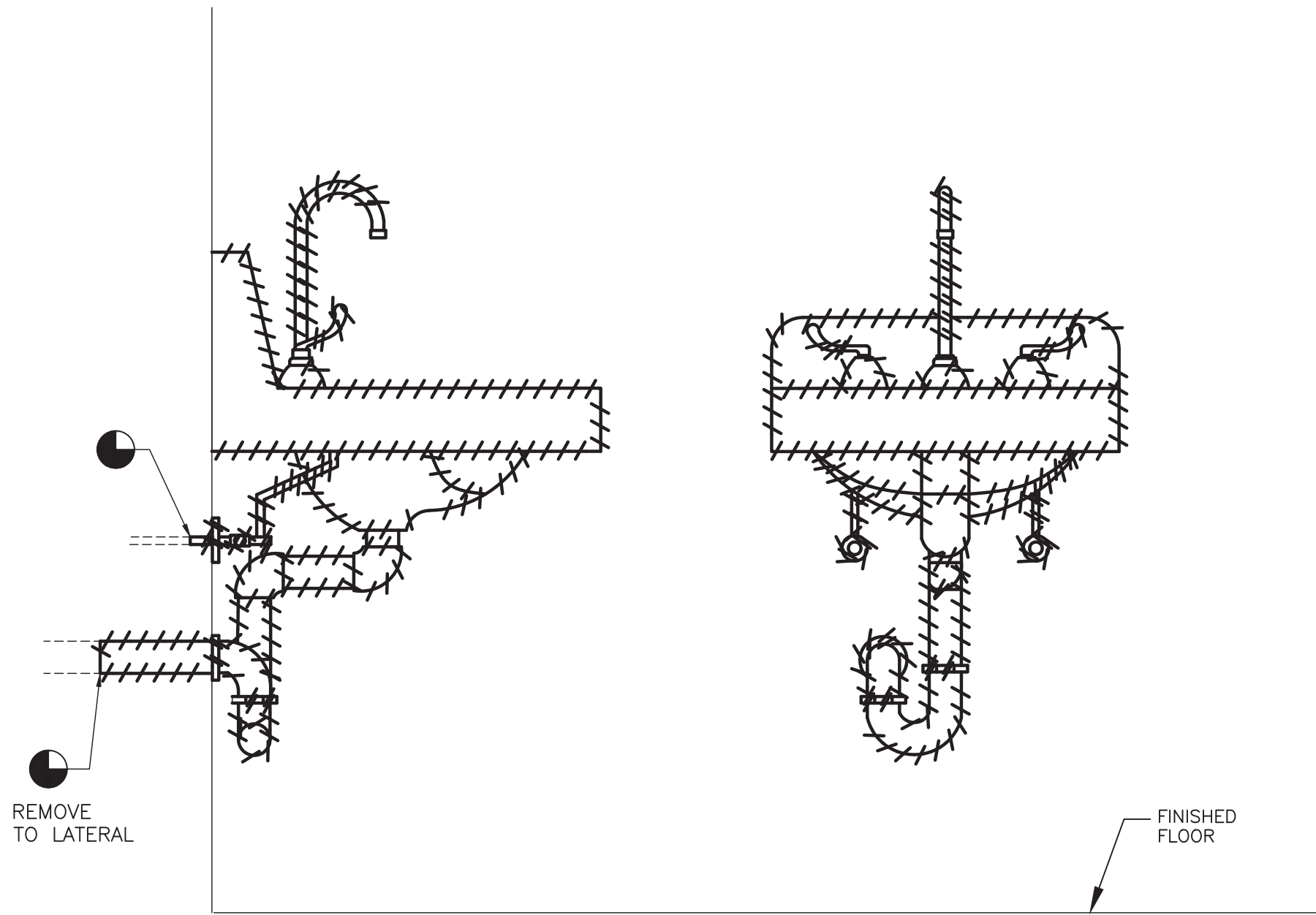


FIXTURE AND EQUIPMENT CONNECTION SCHEDULE							
DESIGNATION	DESCRIPTION	COLD WATER	HOT WATER	WASTE OR SANITARY	VENT	CARRIERS & ACCESSORIES	NOTES
WC-A	WATER CLOSET	1"	--	4"	2"		NOTE 1
WC-B	WATER CLOSET	1"	--	4"	2"	YES	NOTE 2
LAV-A	LAVATORY	1/2"	1/2"	1-1/4"	1-1/4"	YES	NOTE 3
LAV-B	LAVATORY	1/2"	1/2"	1-1/4"	1-1/4"	YES	NOTE 4
UR-A	URINAL	3/4"	--	2"	1-1/2"	YES	NOTE 5
FD-A	FLOOR DRAIN	--	--	3"	2"		NOTE 6

- NOTES:
- FLOOR MOUNTED WATER CLOSET AMERICAN STANDARD MADERA 3043.001 WITH 5901.100 SEAT AND SLOAN FLUSH VALVE ROYAL 111 ESS-1.6-OR-HW
  - WALL MOUNTED WATER CLOSET AMERICAN STANDARD AFWALL 3351.101 WITH 5901.110 SEAT AND SLOAN FLUSH VALVE ROYAL 111 ESS-1.6-OR-HW
  - WALL MOUNTED LAVATORY AMERICAN STANDARD LUCERNE 0356.421 WHITE WITH FAUCET AMERICAN STANDARD 605B.205, PK00.HAC, 605XTMV1070, HARD WIRED AC MULTI-AC, PROVIDE STAINLESS STEEL FLEXIBLE SUPPLIES CW, HW, BRASSCRAFT S1-A AND SHUT-OFF VALVES W/REMOVABLE HANDLES. PROVIDE LAV GUARD TRUBRO 2018-AS-L INSTALL LAV GUARDS WITH TAMPER PROOF SCREWS
  - WALL MOUNTED LAVATORY AMERICAN STANDARD 9140.047 (ADA HEIGHT) WITH FAUCET AMERICAN STANDARD 605B.205, PK00.HAC, 605XTMV1070, HARD WIRED AC MULTI-AC, PROVIDE STAINLESS STEEL FLEXIBLE SUPPLIES CW, HW, BRASSCRAFT S1-A AND SHUT-OFF VALVES W/REMOVABLE HANDLES. PROVIDE LAV GUARD TRUBRO 2018-AS-L INSTALL LAV GUARDS WITH TAMPER PROOF SCREWS
  - WALL MOUNTED URINAL AMERICAN STANDARD WASHBROOK 6590.001 WITH SLOAN FLUSH VALVE ROYAL 186 ESS-1.0-HW
  - FLOOR DRAIN JR SMITH 2010-B WITH TRAP GUARD BY PROVENT SYSTEMS
  - PLUMBING FIXTURES TO BE PROVIDED WITH SHUT-OFF VALVES AS SPECIFIED.
  - INSTALL ALL CARRIERS PER MANUFACTURERS RECOMMENDATIONS. COORDINATE WITH ARCHITECTURAL DRAWINGS FOR CARRIER HEIGHTS.
  - PLUMBING CONTRACTOR TO COORDINATE WITH ELECTRICAL CONTRACTOR TO PROVIDE POWER TO ALL AUTOMATIC FLUSH VALVES AND FAUCETS. PROVIDE 110 VOLT POWER FROM LOCAL OUTLET CIRCUIT IN ALL BATHROOMS TO BE UPDATED. PROVIDE NEW GFI BREAKER FOR THAT CIRCUIT TO THEIR RESPECTIVE PANEL. (MATCH EXISTING TYPE) COORDINATE WITH ELECTRICAL CONTRACTOR. (WIRING BY EC)



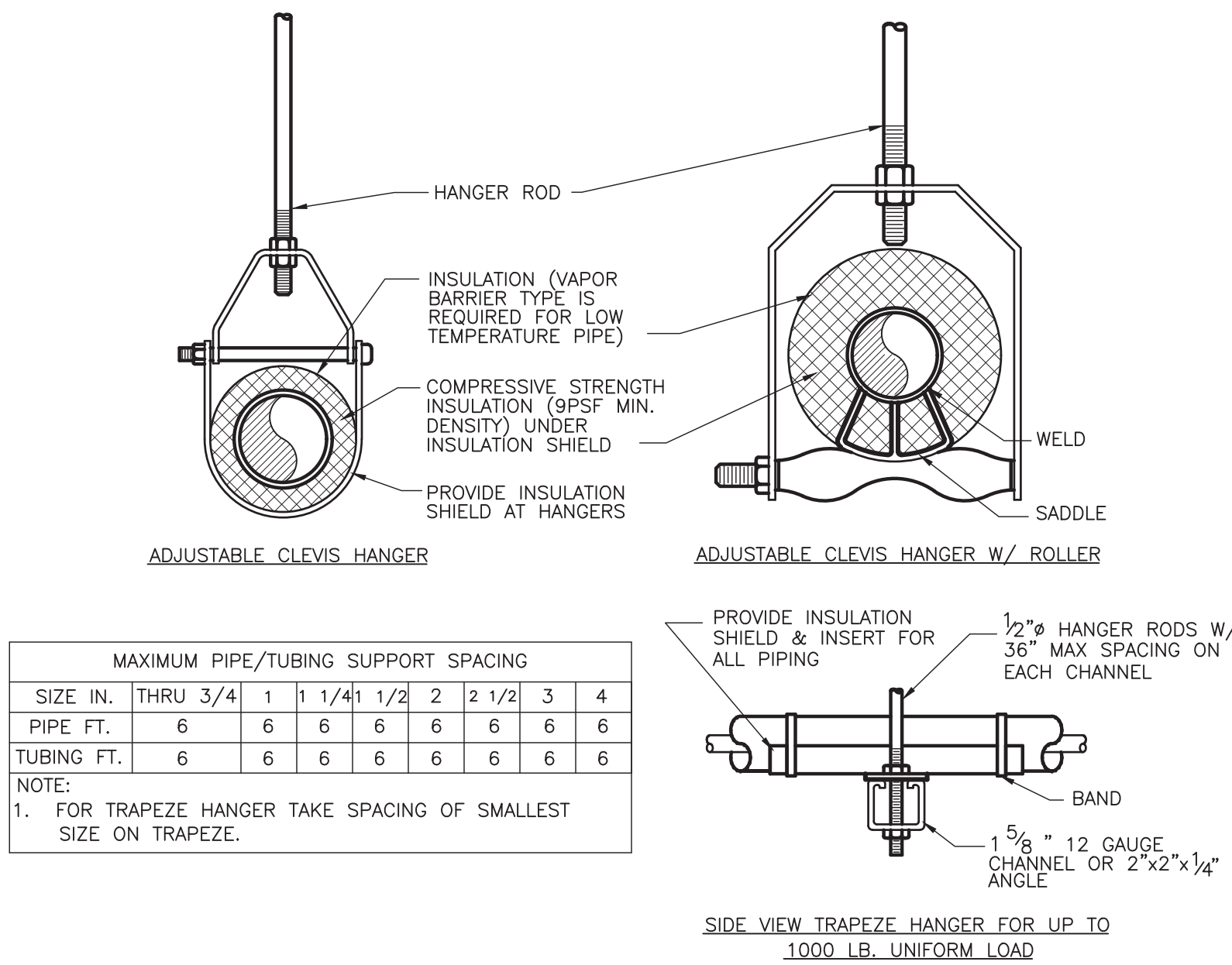
- NOTE:
- REMOVE LAVATORIES, CARRIERS AND ASSOCIATED. REMOVE SANITARY, HOT & COLD WATER SUPPLIES TO WALL/LATERAL. (WATER CLOSETS AND URINALS SIMILAR)
  - THE SANITARY, HOT & COLD WATER LINES WILL BE REUSED FOR NEW WORK. SEE FIXTURE AND EQUIPMENT CONNECTION SCHEDULE THIS SHEET.

## 2 TYPICAL LAVATORY DEMOLITION DETAIL

SCALE: NONE

INSULATION SCHEDULE												
TYPE	EQUIPMENT OR SYSTEM SERVED	INSULATION CLASS (a)			JACKETING CLASS (b)			THICKNESS (IN)				
								NOMINAL PIPE SIZE (IN)				
		INTERIOR CONCEALED	INTERIOR EXPOSED	EXTERIOR	INTERIOR GENERAL	EQUIPMENT ROOMS	EXTERIOR	<1"	1"--<1½"	1½"-- <4"	4 '"- <8"	≥8" & UP
A	DCW, COOLING COIL CONDENSATE	FE	--	--	0	--	--	0.5	0.5	1.0	1.0	1.0
		--	FE	--	--	3	--	0.5	0.5	1.0	1.0	1.0
B	DHW, DHWR	FG	--	--	1	--	--	1.0	1.0	1.5	1.5	1.5
		--	FG	--	--	--	--	1.0	1.0	1.5	1.5	1.5
C	IW, SAN, CW EXTERIOR	--	--	--	--	--	--					
		--	--	FG	--	--	2	1.5	1.5	1.5	1.5	1.5
(a) FG -- FIBROUS GLASS FE -- FLEXIBLE ELASTOMERIC UR -- URETHANE CS -- CALCIUM SILICATE CF -- CERAMIC FIBER		(b) 0 -- NONE 1 -- ALL SERVICE 2 -- CANVAS 3 -- POLYVINYL CHLORIDE 4 -- STAINLESS STEEL 5 -- ALUMINUM 6 -- EPDM			(d) ROOF DRAIN BODIES, HORIZONTAL RUNS, AND VERTICAL PORTION OF EACH CONDUCTOR FOR A DISTANCE OF ONE STORY FROM THE ROOF							
					(e) TWO LAYERS, 3 IN TOTAL							

ALL INSULATION TO COMPLY WITH 2015 NYS ENERGY CONSERVATION CONSTRUCTION CODE



## 1 PIPE SUPPORT DETAIL

SCALE: NONE

ENGINEER:



Eisenbach & Ruhke Engineering, P.C.  
251 Conesee Street - Utica, NY 13501  
Ph: 315-792-1888 Fax: 315-792-1885  
www.eerengpc.com

FULLER  
D'ANGELO  
P.C.  
ARCHITECTS  
PLANNERS

48 KNOWLEDGE ROAD  
ELMSFORD NEW YORK 10523  
TEL 914.892.4444  
FAX 914.892.1717  
WWW.FULLERDANGELO.COM  
Copyright 2020 All Rights Reserved by FULLER & D'ANGELO P.C.

ITG  
ITG Larson, Inc.  
155 Lafayette Ave  
White Plains, NY 10603

BOULDER CONSULTANTS  
DONALD D. EHRE, P.E., P.L.L.C.  
4 OXFORD CROSSING, SUITE 102,  
NEW HARTFORD, NY 13413  
(315) 797-6088

ENGINEER STAMP:



YONKERS PUBLIC SCHOOLS  
INTERIOR RENOVATIONS, DOORS,  
SECURITY & SITE WORK  
RIVERSIDE HIGH SCHOOL  
565 WARBURTON AVENUE, YONKERS N.Y. 10701  
S.E.D.# 66-25-00-01-03-102-008

EMR PROJECT NO. Y19R001  
YPS NO. 10874

BD SET 01.15.2021  
REVISION DATE  
DATE 01.15.2021  
DRAWN BY JIM  
CHECKED BY JIE  
SHEET SIZE JIE  
SCALE AS SHOWN

SCHEDULES  
AND DETAILS

SHEET NO.

P-500