

NO.	ISSUANCE	DATE	REVISION

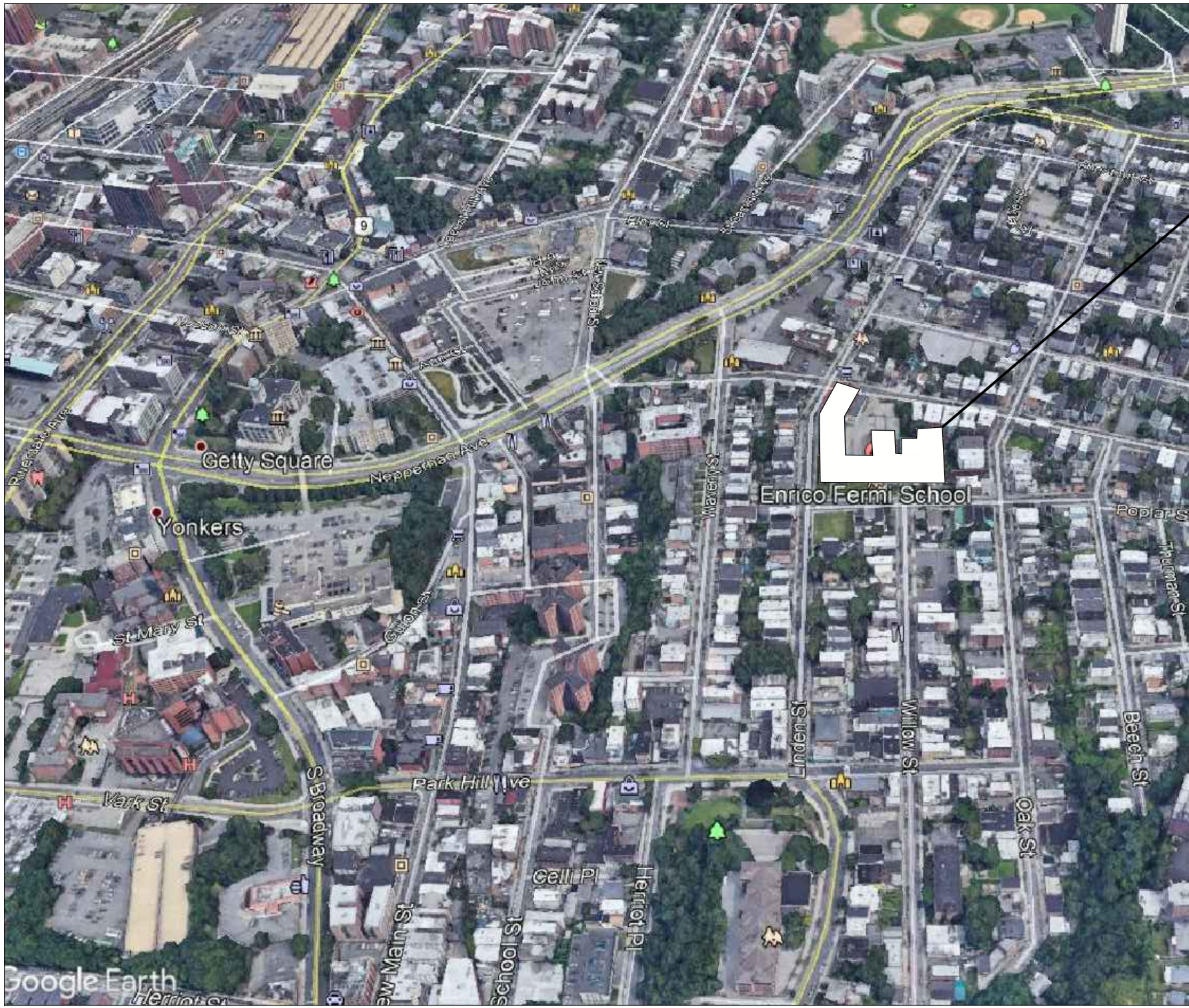
LIST OF DRAWINGS			
<u>PLUMBING</u>			
P-001	ABBREVIATIONS AND SYMBOLS		
P-100	PARTIAL BASEMENT FLOOR PLANS DEMOLITION AND NEW WORK		
P-101	PARTIAL FIRST FLOOR PLANS DEMOLITION AND NEW WORK		
P-500	DETAILS		

YONKERS PUBLIC SCHOOLS

One Larkin Center, Yonkers, New York 10701

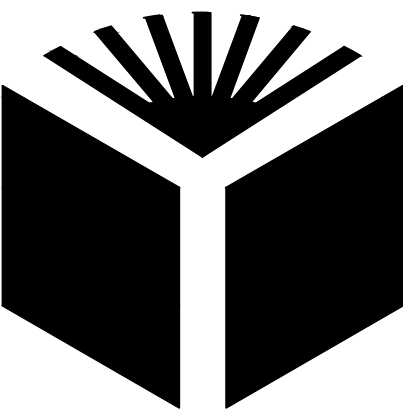
UPGRADES TO HVAC ELECTRICAL AND SELECT INTERIOR IMPROVEMENTS AT THE ENRICO FERMI SCHOOL
INTERIOR GAS PIPING UPGRADES

ENRICO FERMI SCHOOL FOR THE PERFORMING ARTS



ENRICO FERMI
27 POPLAR STREET
YONKERS, NY 10701

PROJECT LOCATION MAP
SCALE: N.T.S.



YONKERS PUBLIC SCHOOLS

BOARD OF EDUCATION

Rev. Steve Lopez
President

Andrea Brown

Kevin Cacace

Dr. John Costanaro

Abdool Haroon Jamal

Dr. Rosalba Corrado Del Veccvhio

Lakisha Collins-Bellamy, Esq.

Sheila Greenwald

Gail Burns

Dr. Edwin Quezada
Superintendent of Schools

John P. Carr, P.E.
Executive Director
School Facilities Management

DESIGN TEAM:

EISENBACH & RUHNKE ENGINEERING, P.C.

291 Genesee Street
Utica, NY 13501
phone: 315.735.1916 fax: 315.735.6365

FULLER AND D'ANGELO P.C. ARCHITECTS AND PLANNERS

45 Knollwood Road, Suite 401
Elmsford, NY 10523
phone: 914.592.4444

SED # 66-23-00-01-02-05-016

YPS JOB # 10459

BID SET

FEBRUARY 3, 2021

PLUMBING ABBREVIATIONS

A/E	ARCHITECT / ENGINEER	I/W	INDIRECT WASTE
AD	AREA DRAIN	IWH	INSTANTANEOUS WATER HEATER
AD	ACCESS DOOR	KW	KILOWATT
ADA	AMERICANS WITH DISABILITIES ACT	LAV	LAVATORY
AFF	ABOVE FINISH FLOOR	M	METER
AFG	ABOVE FINISHED GRADE	MC	MECHANICAL CONTRACTOR
AHJ	AUTHORITY HAVING JURISDICTION	MBH	1000 BTUH
ANSI	AMERICAN NATIONAL STANDARDS INSTITUTE	MH	MANHOLE
AP	ACCESS PANEL	NC	NORMALLY CLOSED
ASHRAE	AMERICAN SOCIETY OF HEATING, REFRIGERATION & AIR CONDITIONING ENGINEERS	NG	NATURAL GAS
ASME	AMERICAN SOCIETY OF MECHANICAL ENGINEERS	NIC	NOT IN CONTRACT
ASPE	AMERICAN SOCIETY OF PLUMBING ENGINEERS	NOM	NOMINAL
AWWA	AMERICAN WATERWORKS ASSOCIATION	NPW	NON POTABLE WATER
BFG	BELOW FINISHED GRADE	NTS	NOT TO SCALE
BHP	BREAK HORSEPOWER	O2	OXYGEN
BOR	BASE OF RISER	OD	OUTSIDE DIAMETER
BTU	BRITISH THERMAL UNIT	OSHA	OCCUPATIONAL SAFETY AND HEALTH ADMINISTRATION
BTUH	BRITISH THERMAL UNIT PER HOUR	P	PUMP
C	CELSIUS	PC	PLUMBING CONTRACTOR
CA	COMBUSTION AIR	PD	PUMP DISCHARGE
CA	COMPRESSED AIR	PDJ	PLUMBING AND DRAINAGE INSTITUTE
CGA	COMPRESSED GAS ASSOCIATION	PF	PLUMBING FIXTURE
CI	CAST IRON	PG	PRESSURE GAGE
CO	CLEANOUT	PPM	PARTS PER MILLION
CO2	CARBON DIOXIDE	PRS	PRESSURE REDUCING STATION
COND	CONDENSATE	PRV	PRESSURE REDUCING VALVE
CP	CIRCULATING PUMP	PSI	POUNDS PER SQUARE INCH
CPVC	CHLORINATED POLYVINYL CHLORIDE	PSIA	POUNDS PER SQUARE INCH ATMOSPHERE
CU	COPPER	PSIG	POUNDS PER SQUARE INCH GAUGE
CW	COLD WATER (DOMESTIC)	PVC	POLYVINYL CHLORIDE
D	DRAIN	RD	ROOF DRAIN
DIA	DIAMETER	RL	RAIN LEADER
DFU	DRAINAGE FIXTURE UNIT	RO	REVERSE OSMOSIS WATER
DN	DOWN	RPZ	REDUCED PRESSURE ZONE BACKFLOW PREVENTER
DPCO	DECK PLATE CLEANOUT	SAN	SANITARY SEWER
DWG	DRAWING	SMACNA	SHEET METAL AND AIR CONDITIONING CONTRACTORS NATIONAL ASSOCIATION
DWH	DOMESTIC WATER HEATER	SCFM	STANDARD CUBIC FOOT/MINUTE
DWV	DRAIN WASTE VENT	SCW	SOFTENED COLD WATER
EC	ELECTRICAL CONTRACTOR	SP	SUMP PUMP
EL	ELEVATION	SQFT	SQUARE FEET
ET	EXPANSION TANK	SS	STAINLESS STEEL
EWC	ELECTRIC WATER COOLER	ST	STORM SEWER
EXIST	EXISTING	T&P	TEMPERATURE & PRESSURE (RELIEF VALVE)
F	FAHRENHEIT	TD	TRENCH DRAIN
FD	FLOOR DRAIN	TDH	TOTAL DYNAMIC HEAD
FU	FIXTURE UNITS	TEMP	TEMPERATURE/TEMPORARY
FV	FLUSH VALVE	TMV	THERMOSTATIC MIXING VALVE
G	NATURAL GAS	TP	TRAP PRIMER
GAL	GALLON	TSTAT	THERMOSTAT
GALV	GALVANIZED	TW	TEMPERED WATER
GC	GENERAL CONTRACTOR	TYP	TYPICAL
GPH	GALLONS PER HOUR	UC	UNDERCUT
GPM	GALLONS PER MINUTE	UH	UNIT HEATER
H&CW	HOT AND COLD WATER	UL	UNDERWRITERS LABORATORY
HB	HOSE BIBB	UPC	UNIFORM PLUMBING CODE
HC	HEATING & HVAC CONTRACTOR	UR	URINAL
HD	HUB DRAIN	V	VENT
HP	HORSEPOWER	VB	VACUUM BREAKER
HS	HAND SINK	VTR	VENT THROUGH ROOF
HW	HOT WATER (DOMESTIC)	WC	WATER CLOSET
INV	INVERT	WCO	WALL CLEANOUT
		WH	WALL HYDRANT
		WHA	WATER HAMMER ARRESTER
		WSFU	WATER SUPPLY FIXTURE UNIT
		XA	EXHAUST AIR

PLUMBING SYMBOLS

	- NEW PIPING AND EQUIPMENT		- GAUGE WITH BALL VALVE
	- EXISTING TO REMAIN PIPING AND EQUIPMENT		- AUTOMATIC AIR VENT
	- PIPING AND EQUIPMENT FOR REMOVAL		- MANUAL AIR VENT
	- BALL VALVE		- THERMOMETER
	- BALL VALVE (HOSE END & CAP)		- BUTTERFLY VALVE
	- BALANCING VALVE		- PIPE CAP
	- CHECK VALVE		- END OF LINE CLEAN OUT
	- CONTROL VALVE - 2 WAY		- HOSE BIBB
	- DRAIN VALVE WITH HOSE BIBB		- FLOOR DRAIN
	- FLANGED CONNECTION		- FLOOR DRAIN WITH P-TRAP
	- FUSIBLE LINK OIL SHUTOFF VALVE		- DECK PLATE CLEAN OUT
	- FLOW CONTROL VALVE		- GAS OUTLET
	- GATE VALVE		- WATER HAMMER ARRESTOR
	- GLOBE VALVE		- WALL HYDRANT
	- GAS COCK		- VACUUM BREAKER
	- LUBRICATED PLUG VALVE		- INLINE PUMP
	- PRESSURE REDUCING VALVE		- WATER METER
	- RELIEF VALVE		- SUCTION DIFFUSER
	- STRAINER WITH BLOWDOWN		- FLEXIBLE CONNECTOR
	- STRAINER WITH BLOWDOWN		- PIPE BREAK
	- SOLENOID VALVE		- PIPE FLOW ARROW
	- THREE-WAY CONTROL VALVE		- REVISION/KEYED NOTE
	- TRIPLE DUTY GLOBE VALVE		- KEYED NOTE
	- UNION		- KEYED NOTE
	- REDUCER OR INCREASER		- KEYED NOTE
	- BRANCH FROM BOTTOM OF PIPE		- POINT OF NEW CONNECTION
	- BRANCH FROM TOP OF PIPE		- LIMIT OF REMOVAL
	- PIPE ELBOW DN		- SAW CUT FLOOR
	- PIPE ELBOW UP		
	PIPE FLOW ARROW		
	BELOW SLAB PIPING		
	COLD WATER PIPING		
	HOT WATER PIPING		
	HOT WATER RECIRC PIPING		
	INDIRECT WASTE PIPING		
	SANITARY PIPING		
	DRAIN PIPING		
	VENT PIPING		
	NATURAL GAS PIPING		
	SANITARY PIPING (BELOW GRADE)		

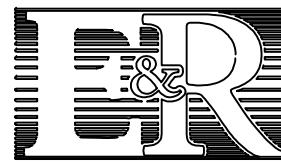
GENERAL PLUMBING NOTES:

1. DRAWINGS ARE DIAGRAMMATIC AND INDICATE GENERAL ARRANGEMENT OF SYSTEMS AND WORK INCLUDED IN THE CONTRACT. IT IS NOT INTENDED TO SPECIFY OR SHOW EVERY OFFSET, FITTING OR COMPONENT. HOWEVER, CONTRACT DOCUMENTS REQUIRE COMPONENTS AND MATERIALS WHETHER OR NOT INDICATED OR SPECIFICALLY SPECIFIED TO MAKE THE SYSTEMS BEING INSTALLED COMPLETE, CODE COMPLIANT, TESTED AND OPERATIONAL.
2. CONTRACTOR SHALL FIELD VERIFY ALL LOCATIONS, DIMENSIONS AND ELEVATIONS PRIOR TO CONSTRUCTION.
3. ALL MATERIALS, EQUIPMENT, METHODS OF INSTALLATION, REMOVALS AND DISPOSAL SHALL BE IN ACCORDANCE WITH THE STANDARDS, REGULATIONS, CODES, ORDINANCES, AND LAWS OF LOCAL, STATE, AND FEDERAL GOVERNMENTS, AND OTHER AUTHORITIES THAT HAVE LAWFUL JURISDICTION.
4. PERFORM WORK, PROVIDE MATERIALS AND EQUIPMENT FOR SYSTEMS SHOWN, SPECIFIED AND DESCRIBED ON DRAWINGS. COMPLETELY COORDINATE ALL TRADES OF THIS CONTRACT AND PROVIDE COMPLETE AND FULLY FUNCTIONAL INSTALLATION. ALL WORK IN THIS SET TO BE COMPLETED UNDER THIS CONTRACT, UNLESS OTHERWISE INDICATED.
5. PROTECT ALL EXISTING AND NEW BUILDING ELEMENTS FROM DAMAGE. CONTRACTOR SHALL RESTORE ALL DAMAGED ELEMENTS TO ORIGINAL OR BETTER CONDITION.
6. WORK SHALL BE EXECUTED IN A WORKMANLIKE MANNER AND SHALL PRESENT NEAT, RECTILINEAR APPEARANCE WHEN COMPLETED. MAINTAIN MAXIMUM HEAD ROOM AT ALL TIMES. DO NOT RUN PIPES, DUCTS, AND CONDUIT EXPOSED UNLESS SHOWN AND NOTED TO BE EXPOSED ON DRAWINGS.
7. MATERIALS AND EQUIPMENT SHALL BE NEW AND INSTALLED ACCORDING TO MANUFACTURER'S INSTRUCTIONS AND RECOMMENDATIONS. MAINTAIN MANUFACTURER'S EQUIPMENT CLEARANCES.
8. CONTRACTOR IS RESPONSIBLE FOR ALL WORK RELATED TO ISOLATING, SHUTTING DOWN, DRAINING, FILLING AND TESTING SYSTEMS TO ALLOW FOR COMPLETION OF WORK. INTERRUPTIONS TO EXISTING SERVICES AND SYSTEMS SHALL BE AS SHORT AS POSSIBLE AND AT A TIME AND DURATION APPROVED BY THE OWNER AND UTILITY AS APPLICABLE. INCLUDE ALL PREMIUM TIME ASSOCIATED WITH INTERRUPTIONS. ALL SYSTEM INTERRUPTIONS SHALL BE SCHEDULED WITH OWNER, UTILITY AND COORDINATED WITH OTHER TRADE WORK.
9. ALL EQUIPMENT PIPING, WIRING, INSULATION ETC. INSTALLED IN HVAC AIR PLENUM SPACES SHALL MEET CODE REQUIREMENTS FOR SMOKE AND COMBUSTIBILITY.
10. SEAL ALL PENETRATIONS THROUGH FIRE RATED WALLS, PARTITIONS AND FLOORS WITH UL RATED MATERIALS/METHODS EQUIVALENT TO FIRE RATING OF ASSEMBLY.
11. PROVIDE PROPER ACCESS TO EQUIPMENT THAT REQUIRES INSPECTION, REPLACEMENT OR REPAIR. ACCESS PANELS/DOORS SHALL BE A MINIMUM OF 12"x12", UNLESS OTHERWISE NOTED.
12. DO NOT SUPPORT EQUIPMENT FROM SUSPENDED CEILINGS. ALL SUPPORT SHALL BE FROM BUILDING STRUCTURE OR FROM CEILING SUSPENSION SYSTEM WHICH HAS BEEN REINFORCED. SUPPORTS SHALL BE SELECTED AND INSTALLED TO PROVIDE A VIBRATION FREE INSTALLATION.
13. CLEANING DURING PLUMBING WORK: THE MECHANICAL ROOM AND ROOMS WHERE WORK WILL BE PERFORMED TO MINIMIZE DISTURBANCE IN THE BUILDINGS, WORKERS ARE TO USE PATHWAYS AND FACILITIES AGREED UPON WITH THE DISTRICT DESIGNEE. IN WRITING, THE AREA OUTSIDE THE BUILDING WHERE CUTTING, WELDING OR STORAGE IS ALLOWED IS TO BE FENCED AT ALL TIMES. THE CONTRACTOR WILL ON A DAILY BASIS CLEAN THE GROUNDS AND THE BUILDING OF ANY DEBRIS OR GARBAGE GENERATED BY THEIR WORK.

REMOVAL NOTES

1. THE SCOPE OF REMOVAL SHOWN ON "REMOVALS" DRAWING IS DIAGRAMMATIC ONLY AND INDICATES THE INTENT OF THE WORK TO BE PERFORMED AND NOT THE COMPLETE SCOPE OF DEMOLITION AND/OR REMOVAL WORK. IT SHALL BE THE RESPONSIBILITY OF THE CONTRACTOR TO REMOVE OR RELOCATE ANY RELATED MECHANICAL DEVICES/ITEMS EVEN IF NOT SPECIFICALLY INDICATED TO BE REMOVED ON THESE DRAWINGS IN ORDER TO ACCOMMODATE NEW WORK.
2. EQUIPMENT/ITEMS SHOWN CROSS HATCHED ON DRAWINGS ARE ITEMS TO BE REMOVED. ANY DEVICES/ITEMS REMOVED SHALL INCLUDE (BUT SHALL NOT BE LIMITED TO) THE REMOVAL OF ALL ASSOCIATED PIPING, CONTROLS, ETC. THAT ARE NOT INCORPORATED IN THE NEW LAYOUT. THE CONTRACTOR SHALL PERFORM ALL WORK REQUIRED TO INSURE CONTINUITY OF SERVICE TO EXISTING REMAINING EQUIPMENT. NO EXTRAS RELATING TO THE SCOPE OF WORK DESCRIBED WILL BE ALLOWED.
3. EQUIPMENT, PIPING, ETC. REQUIRED TO RECONNECT SHALL BE INSTALLED CONCEALED WITHIN THE SUSPENDED CEILINGS, PARTITIONS AND/OR WALLS, FLOORS. NO SURFACE MOUNTED OR EXPOSED EQUIPMENT, PIPING, ETC., SHALL BE PERMITTED, UNLESS SPECIFICALLY INDICATED.
4. ALL ITEMS TO BE REMOVED SHALL BE REVIEWED WITH THE OWNER PRIOR TO REMOVAL. OWNER SHALL HAVE FIRST SALVAGE RIGHTS. ITEMS THE OWNER WISHES TO KEEP SHALL BE REMOVED WITH CARE AND STORED AS DIRECTED BY OWNER. ITEMS THE OWNER DOES NOT WISH TO KEEP SHALL BE REMOVED FROM THE SITE AND DISPOSED OF PROPERLY.

ENGINEER:



Eisenbach & Rubenke Engineering, P.C.
297 Seneca Street - Utica, NY 13501
Ph: 315-732-9884 Fax: 315-732-6866
www.e-r-engineers.com

CONSULTANT(S):

STAMP



YONKERS PUBLIC SCHOOLS
UPGRADES TO HVAC AND SELECT INTERIOR IMPROVEMENTS AT THE ENRICO FERMI SCHOOL
INTERIOR GAS PIPING UPGRADES
ENRICO FERMI SCHOOL for the PERFORMING ARTS
27 POPLAR STREET, YONKERS, NY 10701
SED 66-23-00-01-02-05-016

PROJECT NO. Y20EF01

YPS PROJECT NO. 10459

REVISION	DATE	BY
ISSUED FOR BID	3.3.2021	
DRAWN BY	JMJ	
CHECKED BY	JJE	
APPROVED	JJE	
SCALE	AS NOTED	

SHEET TITLE

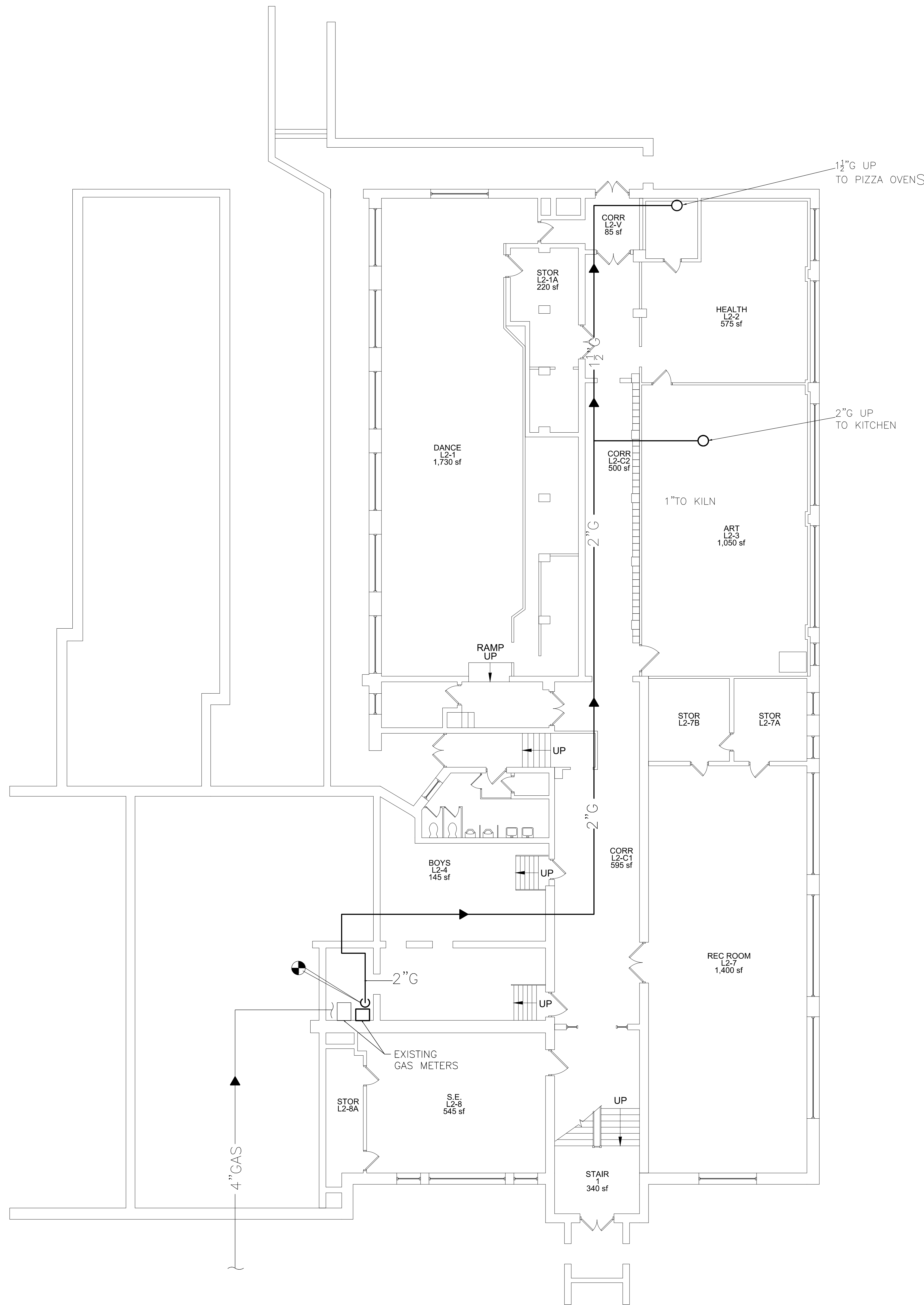
ABBREVIATIONS
AND SYMBOLS

SHEET NO.

P-001

FILE PATH - N:\ - PROJECT DIRECTORIES\Yonkers Public Schools\Enrico Ferri School for the Performing Arts\Y20EF01 Gas Connections\CAD\Y20EF01.d001.rbd.dwg

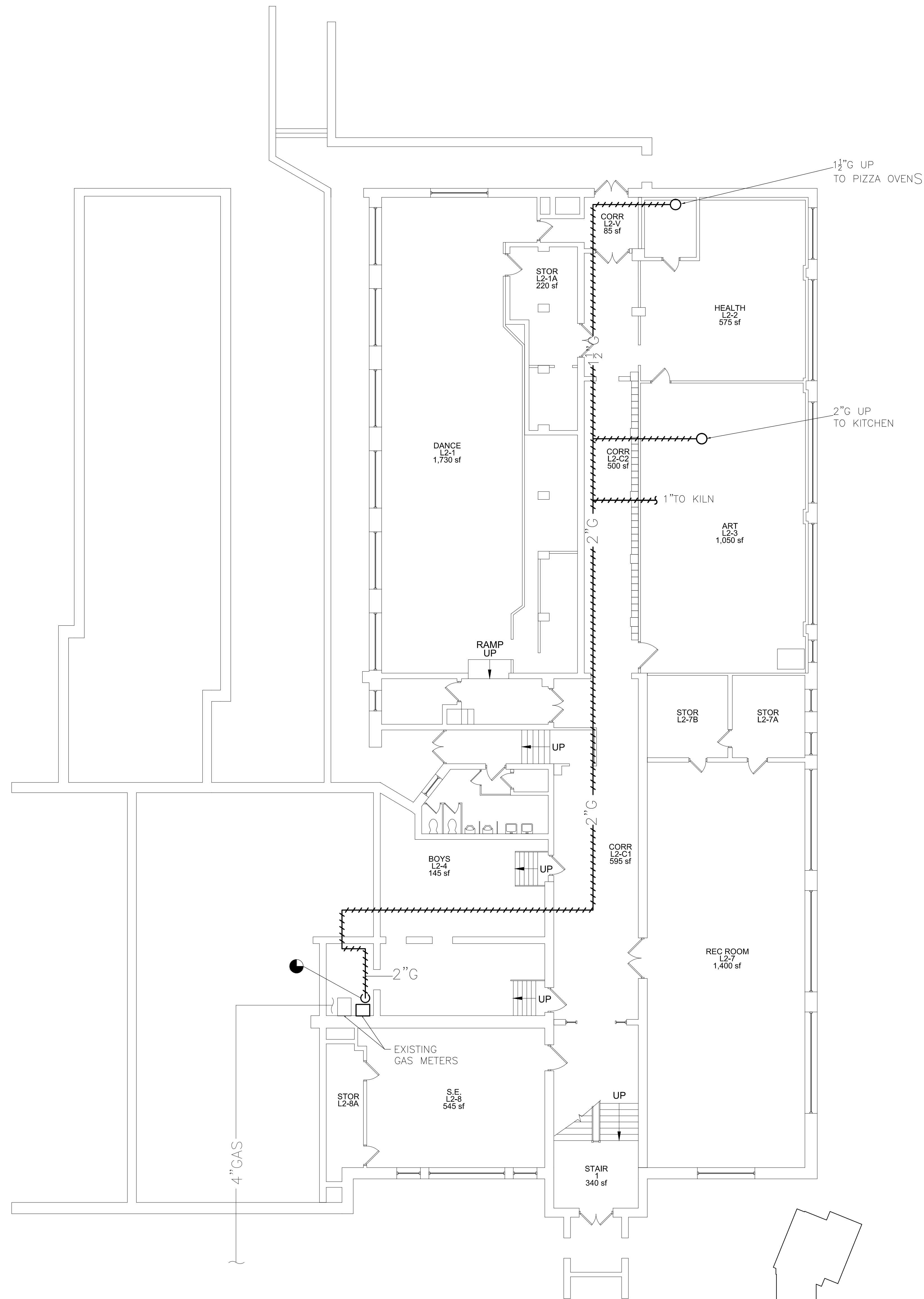
IT IS A VIOLATION OF THE LAW FOR ANY PERSON UNLESS HE IS ACTING UNDER THE DIRECTION OF A LICENSED PROFESSIONAL ENGINEER, TO REPRODUCE OR TRANSMIT IN ANY MANNER THE CONTENTS OF THIS DRAWING WITHOUT THE WRITTEN PERMISSION OF THE ENGINEER.



1 PARTIAL BASEMENT FLOOR PLAN - NEW WORK
SCALE: 1/8" = 1'-0"

KEYED NOTES - NEW WORK BOILER ROOM:

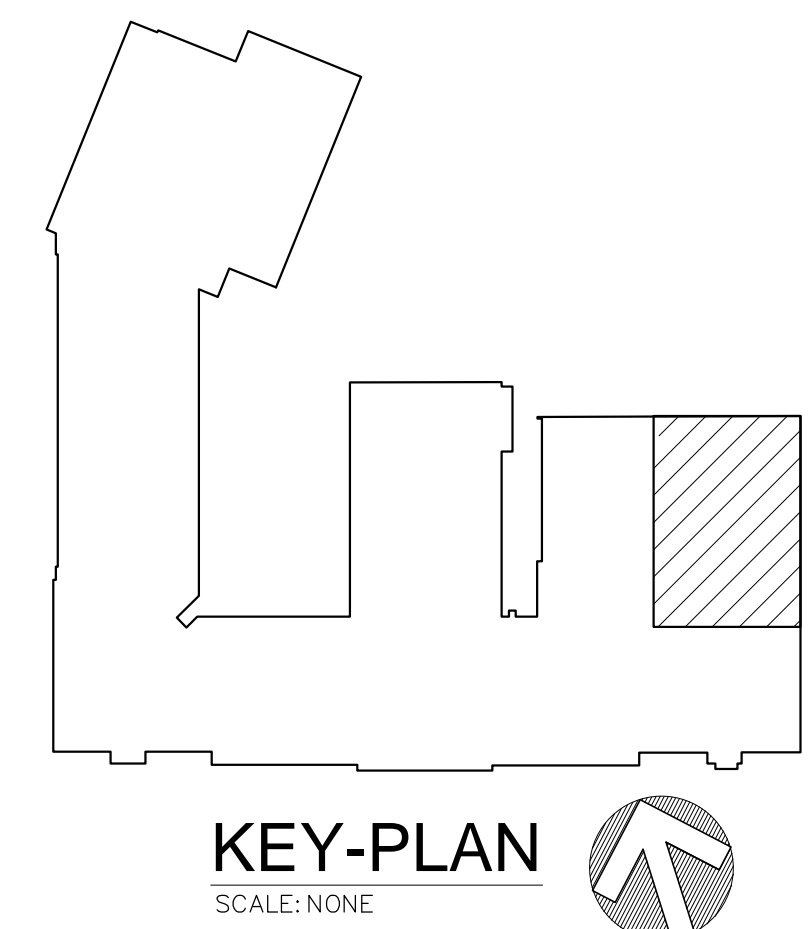
- 1 PROVIDE NEW GAS PIPING AS SHOWN.



2 PARTIAL BASEMENT FLOOR PLAN - DEMOLITION
SCALE: 1/8" = 1'-0"

KEYED NOTES - DEMOLITION

- 1 REMOVE GAS PIPING AS SHOWN. PREPARE FOR NEW WORK.



IT IS A VIOLATION OF THE LAW FOR ANY PERSON UNLESS HE IS ACTING UNDER THE DIRECTION OF A LICENSED ARCHITECT OR ENGINEER TO SEAL OR SIGN ANY DRAWING OR SPECIFICATION FOR CONSTRUCTION.

ENGINEER:



Eichenbach & Ruben Engineering, P.C.
291 Seneca Street - Utica, NY 13501
Ph: 315-732-9888 Fax: 315-732-6865
www.e-r-engineers.com

CONSULTANT(S):

STAMP



YONKERS PUBLIC SCHOOLS
UPGRADES TO HVAC AND SELECT INTERIOR IMPROVEMENTS AT THE ENRICO FERMI SCHOOL
INTERIOR GAS PIPING UPGRADES
ENRICO FERMI SCHOOL for the PERFORMING ARTS
27 POPLAR STREET, YONKERS, NY 10701
SED 66-23-00-01-02-05-016

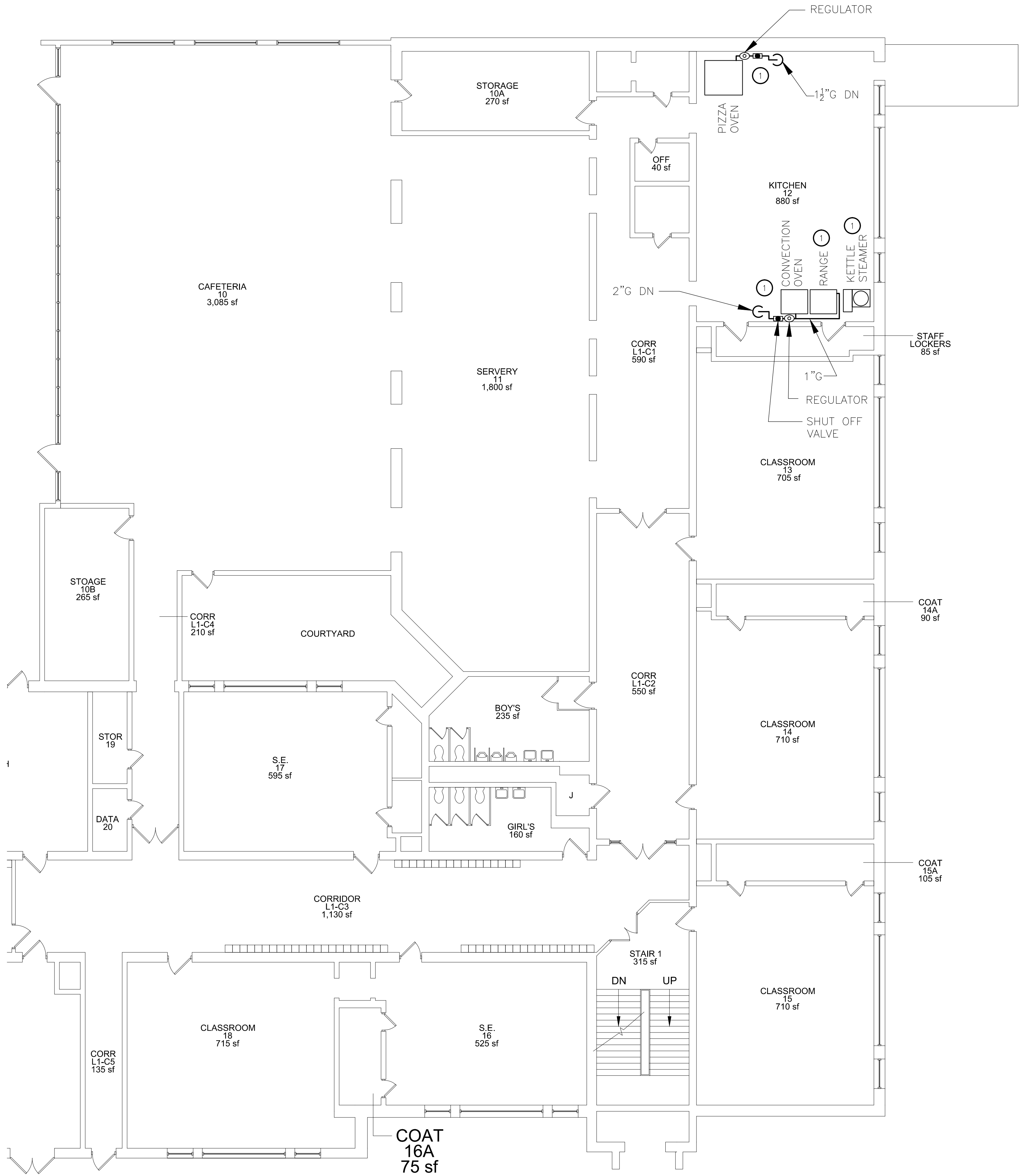
PROJECT NO.	Y20EF01	
YPS PROJECT NO.	10459	
REVISION	DATE	BY
ISSUED FOR BID	3.3.2021	
DRAWN BY	JMJ	
CHECKED BY	JJE	
APPROVED	JJE	
SCALE	AS NOTED	

SHEET TITLE
PARTIAL BASEMENT
FLOOR PLANS
DEMOLITION AND NEW
WORK

SHEET NO.

P-100

FILE PATH - N:\V - PROJECT DIRECTORIES\Yonkers Public Schools\Enrico Ferri School for the Performing Arts\Y20EF01 Gas Connections\CAD\Y20EF01.P100.BID.dwg

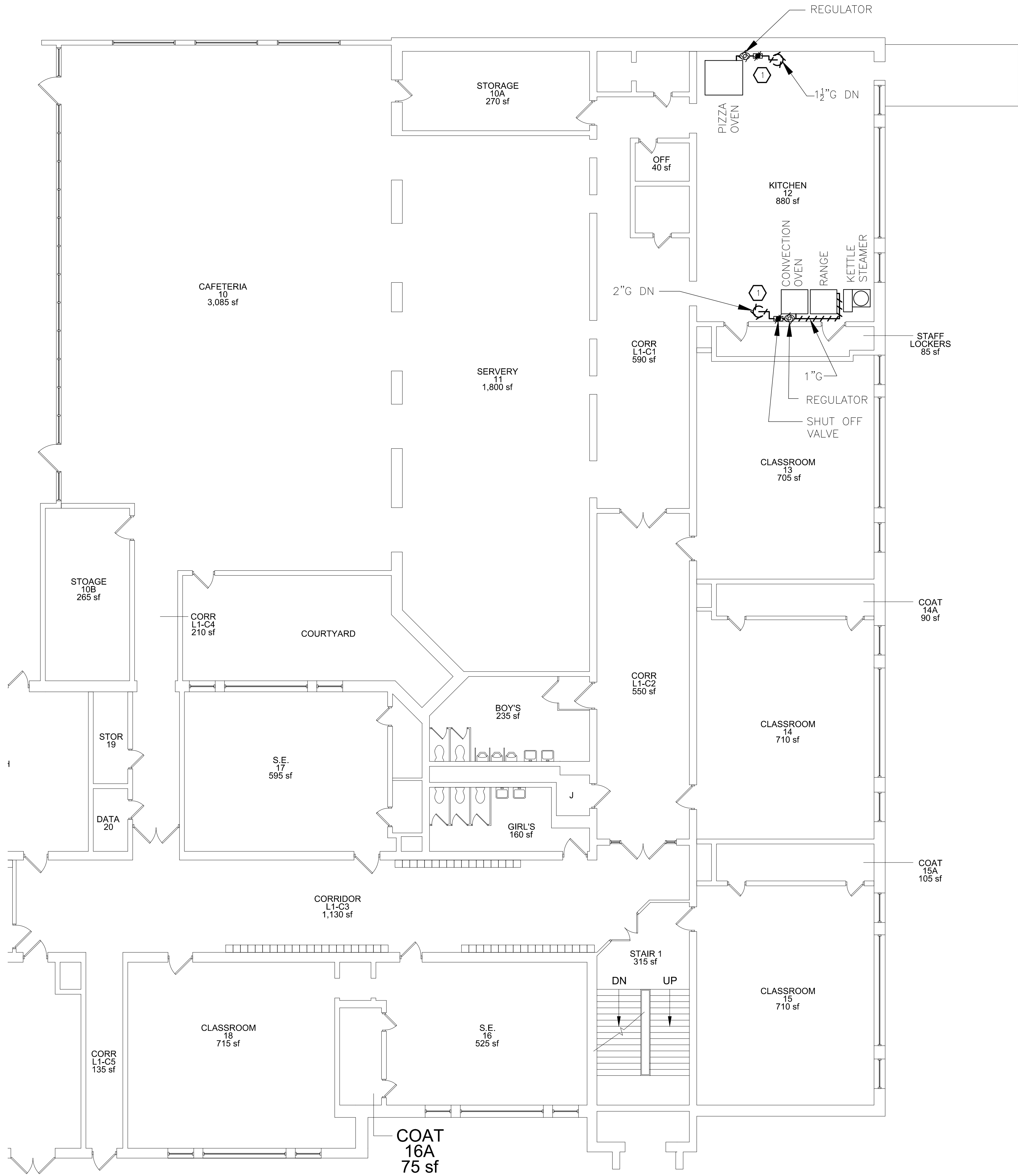


NOTE: EXISTING EQUIPMENT TO REMAIN

1 PARTIAL FIRST FLOOR PLAN - NEW WORK
SCALE: 1/8" = 1'-0"

KEYED NOTES - NEW WORK BOILER ROOM:

1 PROVIDE NEW GAS PIPING AS SHOWN. PROVIDE STAINLESS STEEL FLEX HOSE CONNECTIONS TO EQUIPMENT MAINTAIN FULL LINE SIZE.

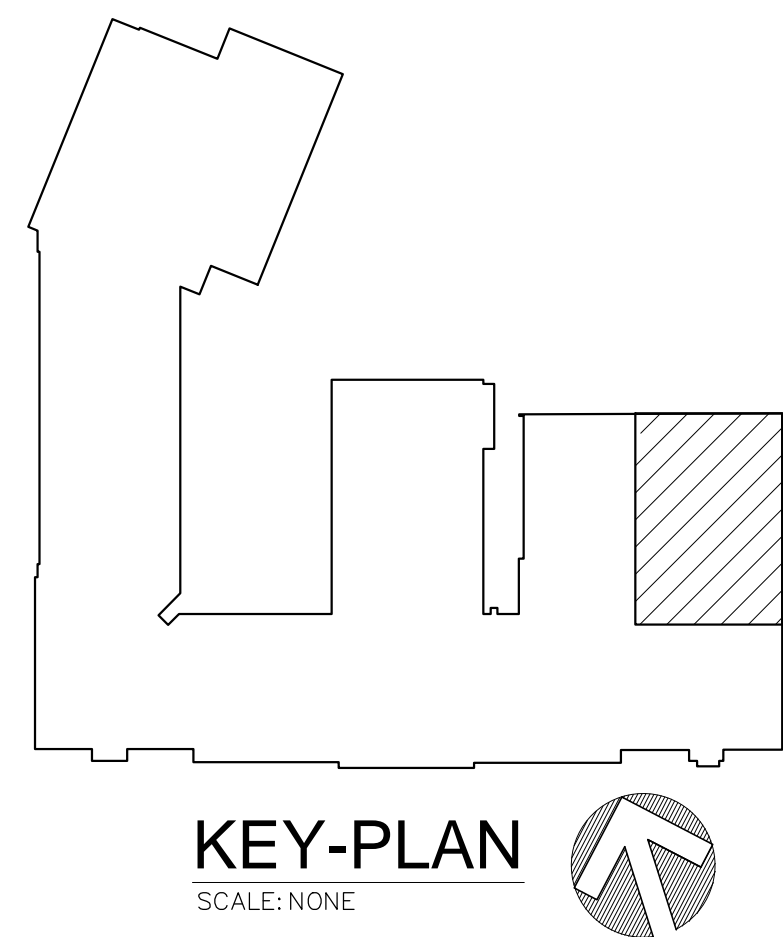


NOTE: EXISTING EQUIPMENT TO REMAIN

2 PARTIAL FIRST FLOOR PLAN - DEMOLITION
SCALE: 1/8" = 1'-0"

KEYED NOTES - DEMOLITION

1 REMOVE GAS PIPING TO EQUIPMENT AS SHOWN. PREPARE FOR NEW WORK.



ENGINEER:

Eisenbach & Ruben Engineering, P.C.
291 Seneca Street - Utica, NY 13501
Ph: 315-732-1998 Fax: 315-732-6865
www.eisenbach.com

CONSULTANT(S):

STAMP

YONKERS PUBLIC SCHOOLS
UPGRADES TO HVAC AND SELECT INTERIOR IMPROVEMENTS AT THE ENRICO FERMI SCHOOL
ENRICO FERMI SCHOOL for the PERFORMING ARTS
27 POPLAR STREET, YONKERS, NY 10701
SED 66-23-00-01-02-05-016

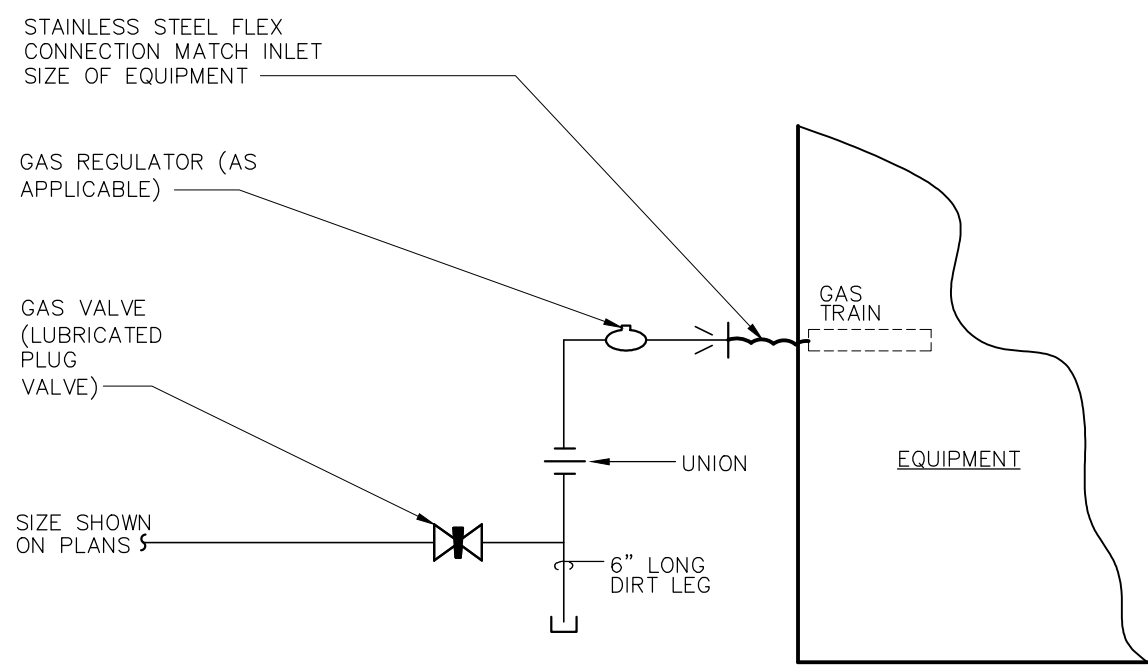
PROJECT NO.	Y20EF01	
YPS PROJECT NO.	10459	
REVISION	DATE	BY
ISSUED FOR BID	3.3.2021	
DRAWN BY	JMJ	
CHECKED BY	JJE	
APPROVED	JJE	
SCALE	AS NOTED	

SHEET TITLE
PARTIAL FIRST FLOOR
PLANS DEMOLITION AND
NEW WORK

SHEET NO.
P-101

FILE PATH - N:\V - PROJECT DIRECTORIES\Yonkers Public Schools\Enrico Fermi School for the Performing Arts\Y20EF01 Gas Connections\CAD\Y20EF01.P100.BID.dwg

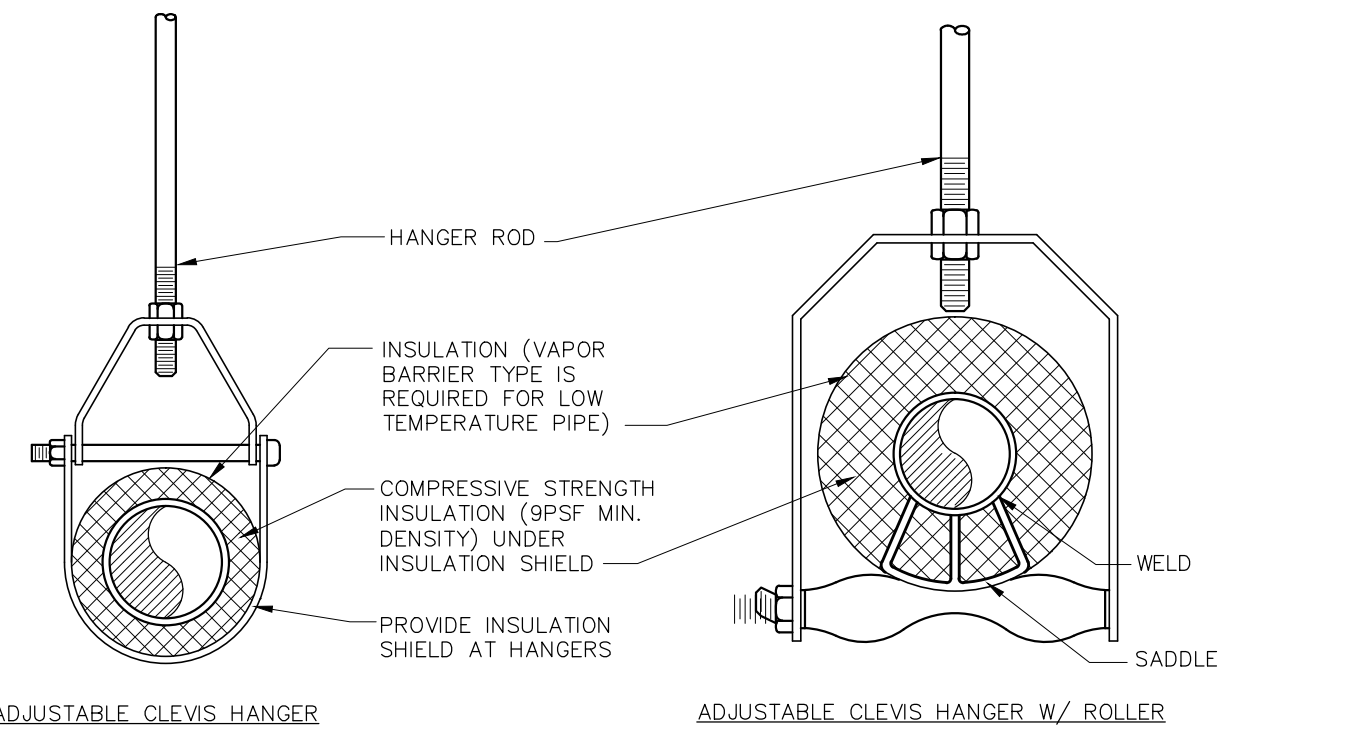
IT IS A VIOLATION OF THE LAW FOR ANY PERSON UNLESS HE IS ACTING UNDER THE DIRECTION OF A LICENSED ARCHITECT OR ENGINEER TO SEAL OR SIGN ANY DRAWING OR SPECIFICATION FOR THE CONSTRUCTION OF A BUILDING OR STRUCTURE.



NOTE: GAS PIPING CONNECTION TO EQUIPMENT
PER MANUFACTURERS RECOMMENDATIONS

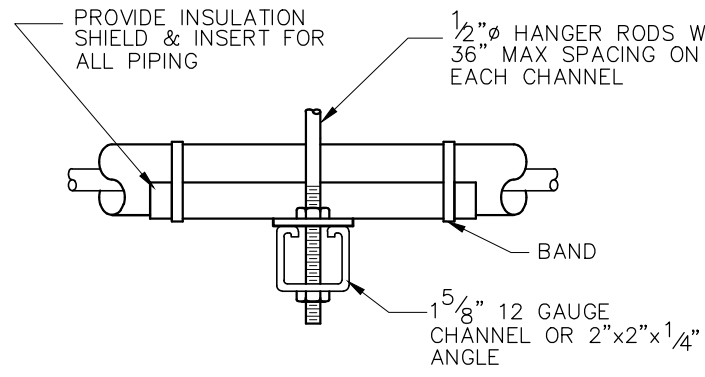
1 GAS PIPE CONNECTION DETAIL

SCALE: NONE



MAXIMUM PIPE/TUBING SUPPORT SPACING									
SIZE IN.	THRU 3/4	1	1 1/4	1 1/2	2	2 1/2	3	4	
PIPE FT.	6	6	6	6	6	6	6	6	
TUBING FT.	6	6	6	6	6	6	6	6	

NOTE:
1. FOR TRAPEZE HANGER TAKE SPACING OF SMALLEST
SIZE ON TRAPEZE.



SIDE VIEW TRAPEZE HANGER FOR UP TO
1000 LB. UNIFORM LOAD

2 PIPE SUPPORT DETAIL

SCALE: NONE

PLUMBING PIPING SCHEDULE					
SERVICE	PIPE SIZES	PIPE MATERIAL	FITTINGS	CONNECTIONS	REMARKS
NATURAL GAS	--	HIGH DENSITY POLYETHYLENE	HIGH DENSITY POLYETHYLENE	BUTT FUSION	BELOW GRADE ONLY -- SEE NOTE 1
	--	SCHEDULE 40 BLACK STEEL	BUTT WELDED	WELDED	EXTERIOR ABOVE GRADE ONLY SEE NOTE 2
	2 INCH AND SMALLER	SCHEDULE 40 BLACK STEEL	MALLEABLE IRON	THREADED	EXTERIOR ABOVE GRADE ONLY -- SEE NOTE 2
	2 INCH AND SMALLER	SCHEDULE 40 BLACK STEEL	MALLEABLE IRON	THREADED	INTERIOR ONLY SEE NOTE 2
	2 1/2 INCH AND LARGER	SCHEDULE 40 BLACK STEEL	BUTT WELD STEEL	THREADED	INTERIOR ONLY SEE NOTE 2

- NOTES
- PROVIDE DETECTABLE UNDERGROUND WARNING TAPE , 5 MIL POLYETHYLENE, 6 INCH WIDE, ALUMINUM BACK IDENTIFYING ALL BELOW GRADE SERVICES.
 - PROVIDE ONE COAT OF ALKYO PRIMER AND TWO COATS OF EXTERIOR ACRYLIC LATEX GLASS ENAMEL ON EXPOSED EXTERIOR AND INTERIOR PIPING. COLOR YELLOW.

ENGINEER:
ER
Eisenbach & Ruben Engineering, P.C.
291 Seneca Street - Utica, NY 13501
Ph: 315-732-1988 Fax: 315-732-6866
www.eisenbach.com

CONSULTANT(S):

STAMP



YONKERS PUBLIC SCHOOLS
UPGRADES TO HVAC AND SELECT INTERIOR IMPROVEMENTS AT THE ENRICO FERMI SCHOOL
INTERIOR GAS PIPING UPGRADES
ENRICO FERMI SCHOOL for the PERFORMING ARTS
27 POPLAR STREET, YONKERS, NY 10701

PROJECT NO.	Y20EF01	
YPS PROJECT NO.	10459	
REVISION	DATE	BY
ISSUED FOR BID	3.3.2021	
DRAWN BY	JMJ	
CHECKED BY	JJE	
APPROVED	JJE	
SCALE	AS NOTED	

SHEET TITLE

DETAILS AND
SCHEDULE

SHEET NO.

P-500

FILE PATH - N:\ - PROJECT DIRECTORIES\Yonkers Public Schools\Enrico Ferri School for the Performing Arts\Y20EF01 Gas Connections\CAD\Y20ef01_p500.BID.dwg